

Met Building Wayfinding

Design Dev — Pres 03
January 2023

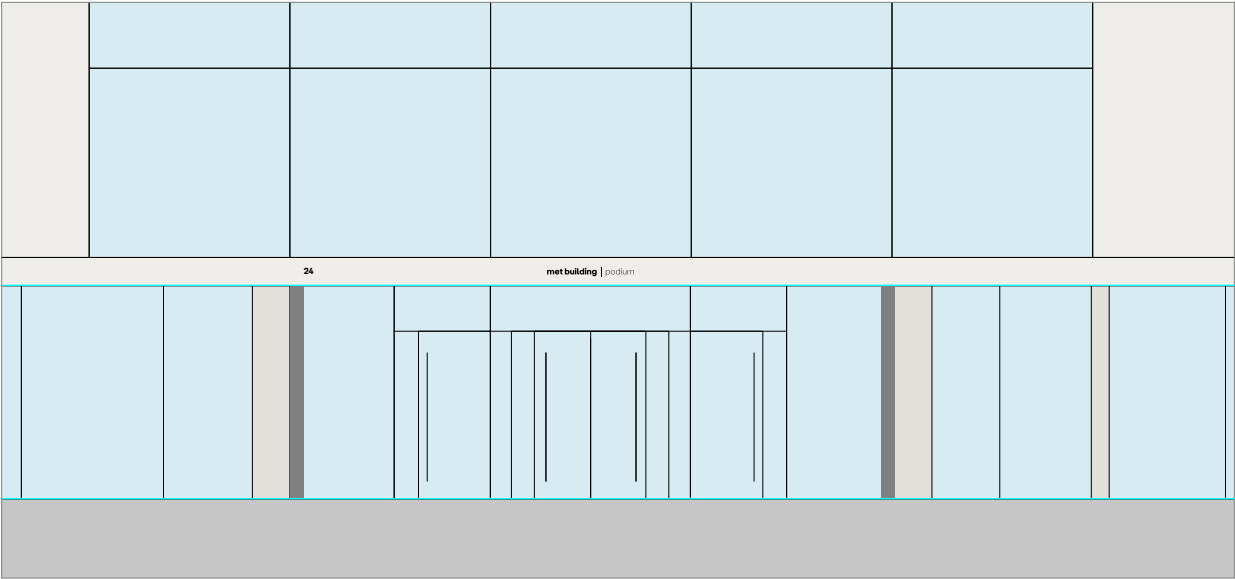


Exterior signage

Exterior (Podium) Name

Dims to be confirmed post survey

Elevation from Percy St



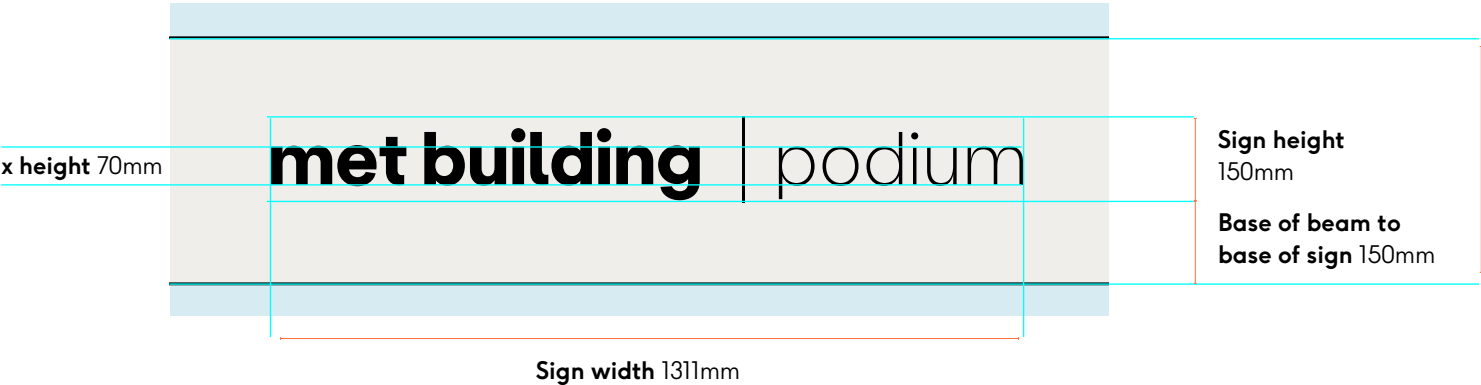
Floor to base of beam
3285mm (approx)

Reference



Name (Podium)

Black cut metal letters fixed direct to stone building facade above entrance doors.



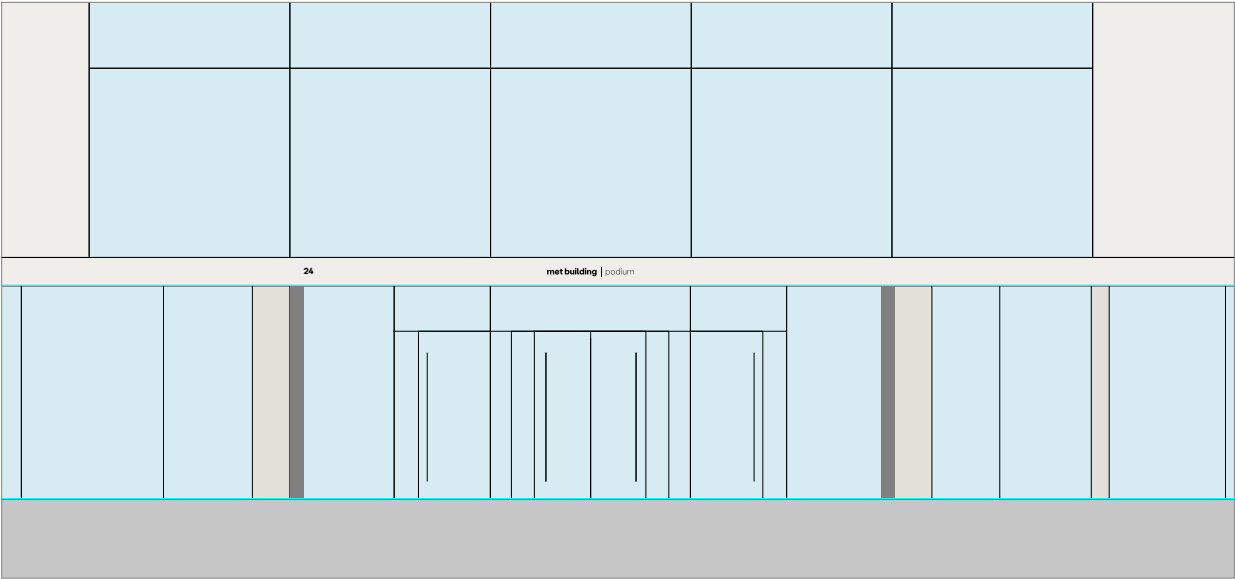
Sign depth (flush to beam)
30mm



Exterior (Podium) Number

Dims to be confirmed post survey

Elevation from Percy St

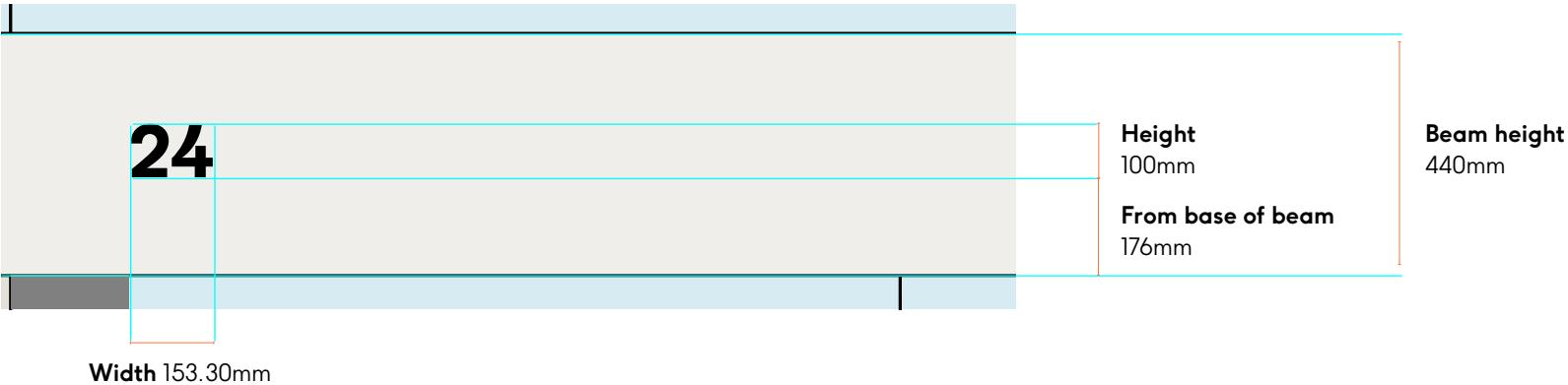


Reference



Number (Podium)

Black cut metal letters fixed direct to stone building facade above entrance doors.



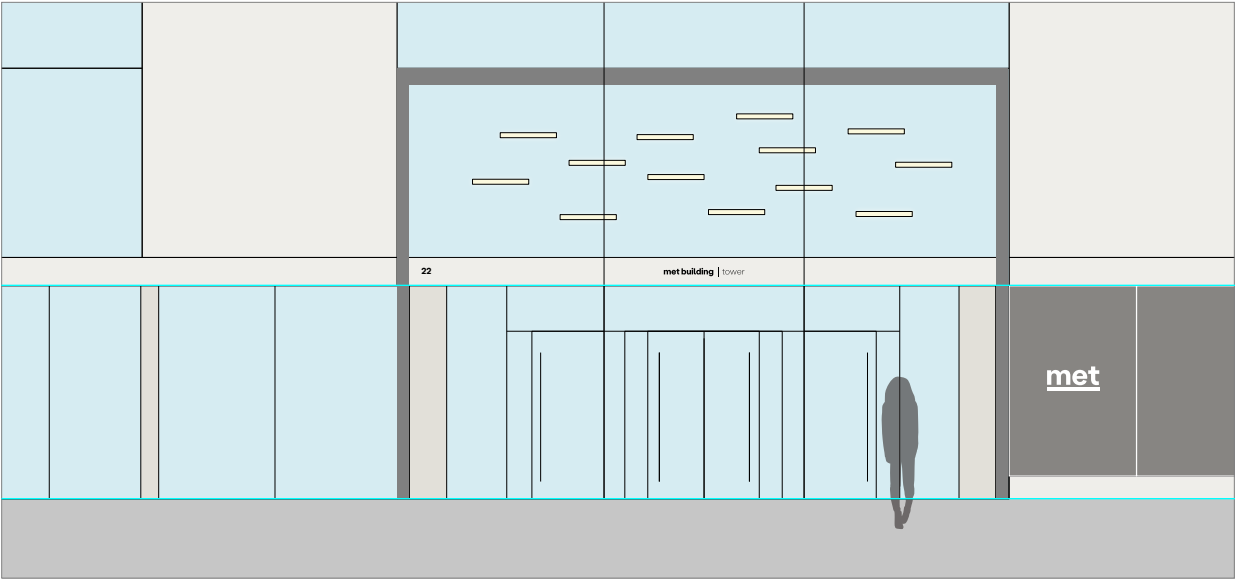
Sign depth (flush to beam)
30mm



Exterior (Tower) Name

Dims to be confirmed post survey

Elevation from Percy St



Floor to base
of beam
3285mm

Reference



Name (Tower)

Black cut metal letters fixed centred direct to stone building facade above entrance doors.



x height 70mm

Sign height
150mm

Beam height
440mm

Base of beam to
base of sign 145mm

Sign width 1217.36 mm

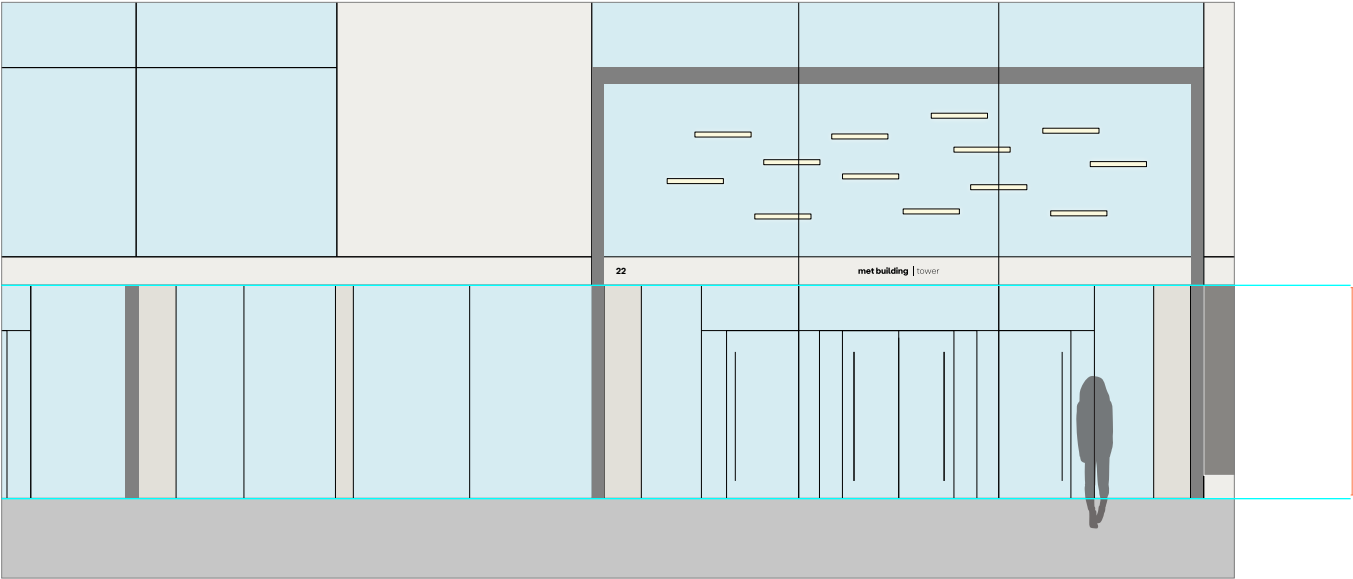
Sign depth (flush to beam)
30mm



Exterior (Tower) Number

Dims to be confirmed post survey

Elevation from Percy St



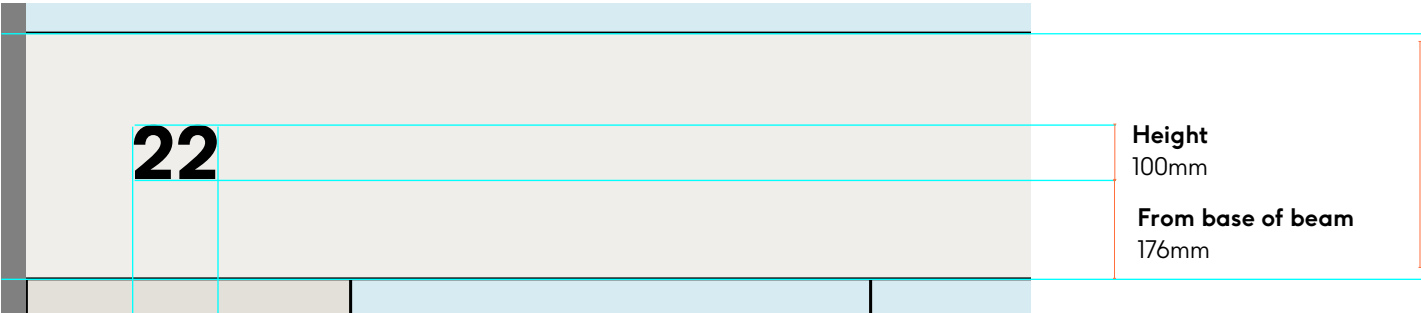
Floor to base
of beam
3285mm

Reference



Number (Tower)

Black cut metal letters fixed centred direct to stone building facade above entrance doors.



Height
100mm

From base of beam
176mm

Beam height
440mm

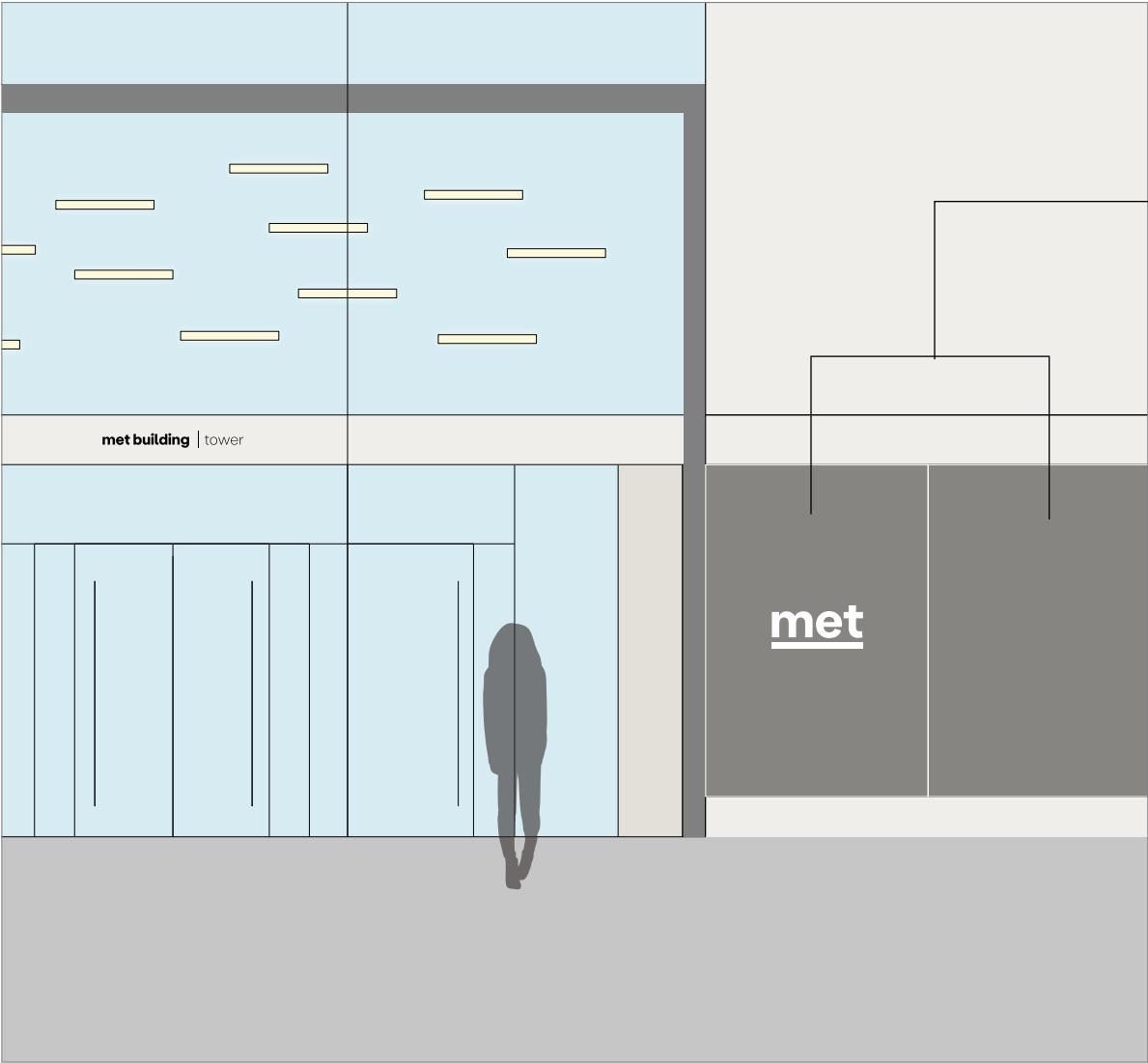
Sign depth (flush to beam)
30mm



Width 152.74mm

Exterior Illuminated logo

Elevation from Percy St



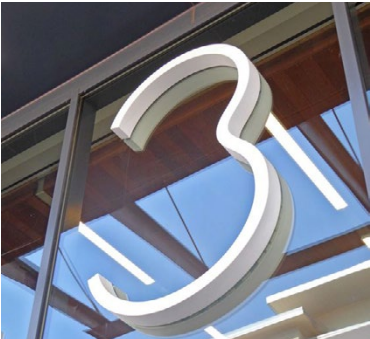
2 equal back painted glass panels of 1943w x 3029h
Painted RAL 9007

Dimensions on following page

Details

- White 3D illuminated met logo. Surface mounted to exterior of back-painted glass panel. Consists of four acrylic (internally lit) elements.
- Drill glass pre installation – four holes (2/3mm) – one for each element.
- Require access to power e.g transformer behind glass.
- Logo fitted externally flush to window, wires internal behind glass.
- Static light, option for dimming for evening levels.
- Returns & carcass will be descaled stainless steel, powder coated white. The face of the letters will be opal acrylic 050 (white) to diffuse the LED diodes and provide a wash of light across the entire face.
- Luminance level will not exceed 300cd/m2

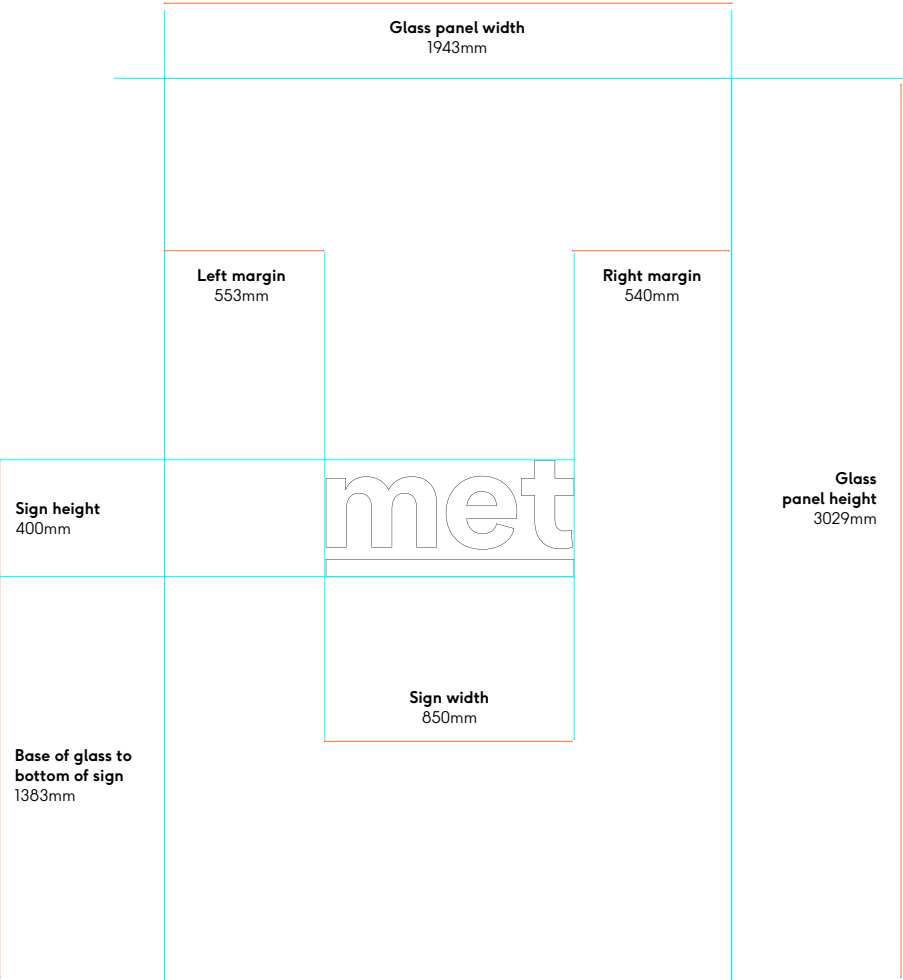
References



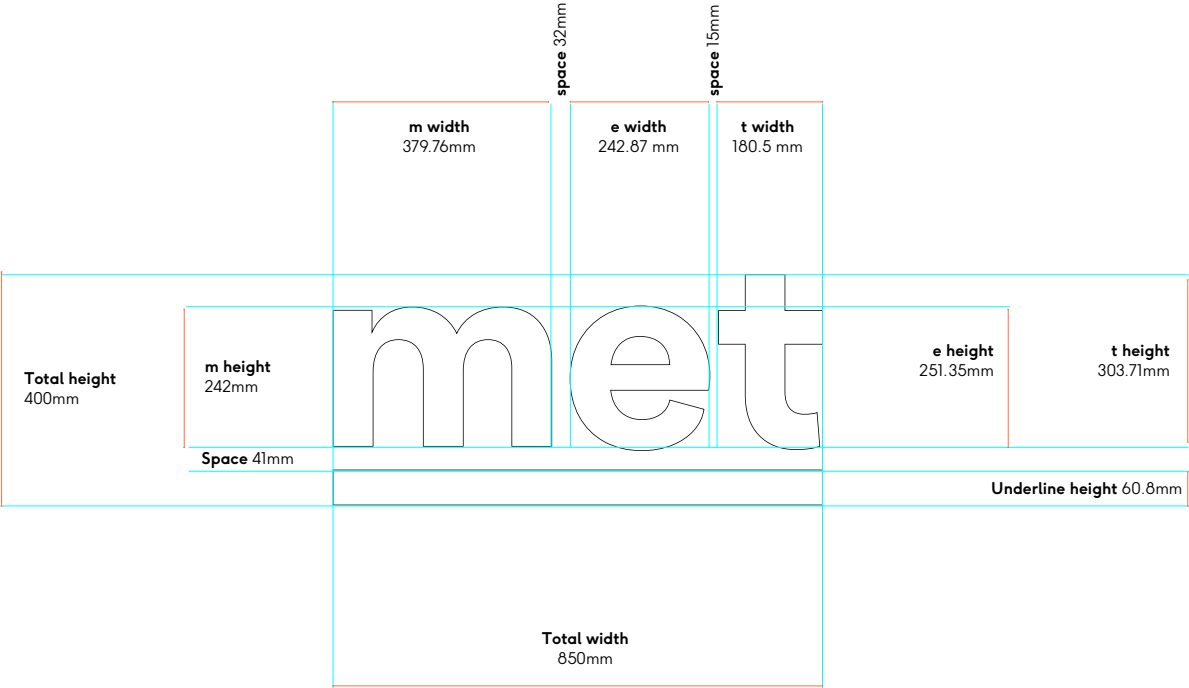
Exterior

Illuminated logo – dimensions

Composition



Sign detail

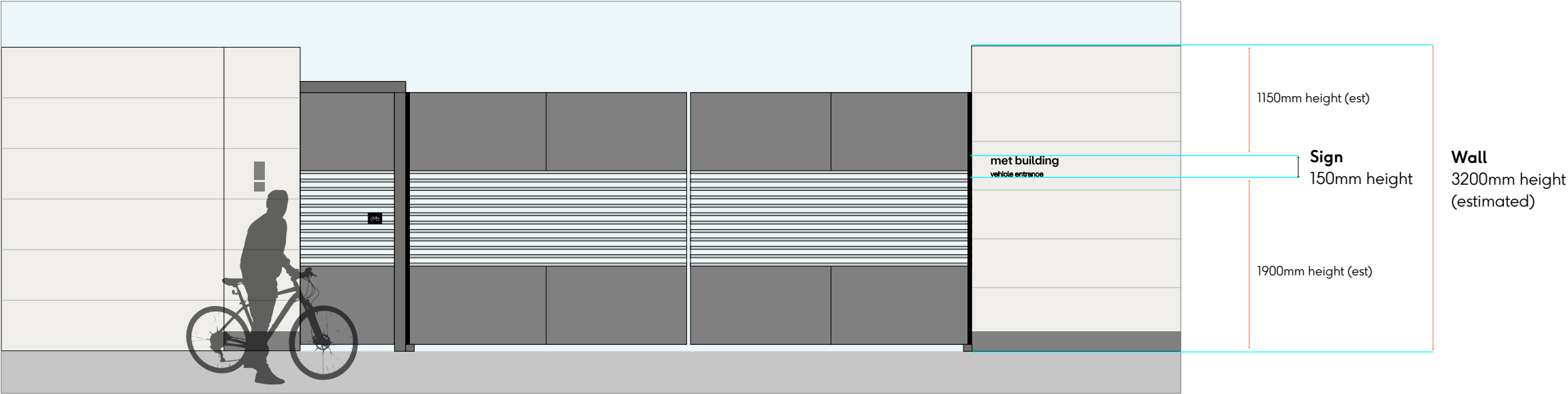


BOH Entrance

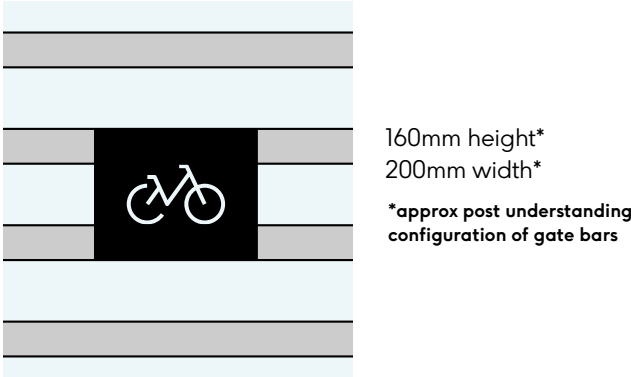
BOH Entrance

Dims to be confirmed post survey

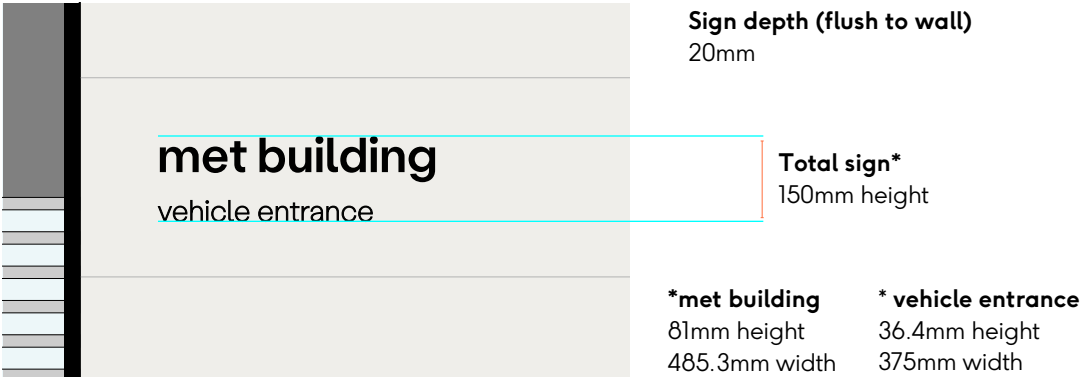
Elevation from Windmill St



1 x cycle sign
Black metal panel with stencil bike icon fixed directly to gate bars.



1 x logo + vehicle entrance
Black cut metal forms fixed direct to stone right to entrance of gates to service yard.



Thank you

st