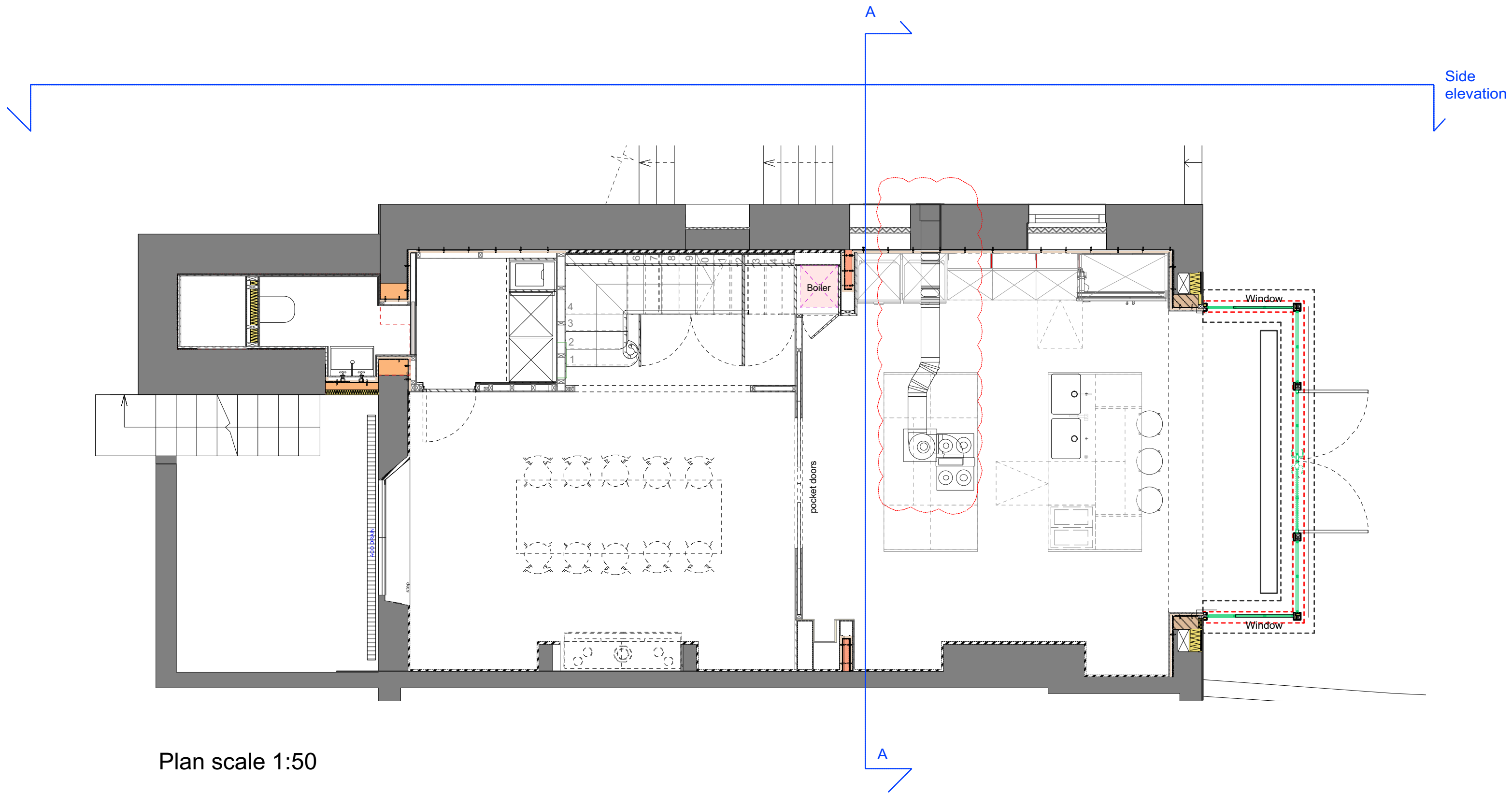


General Notes

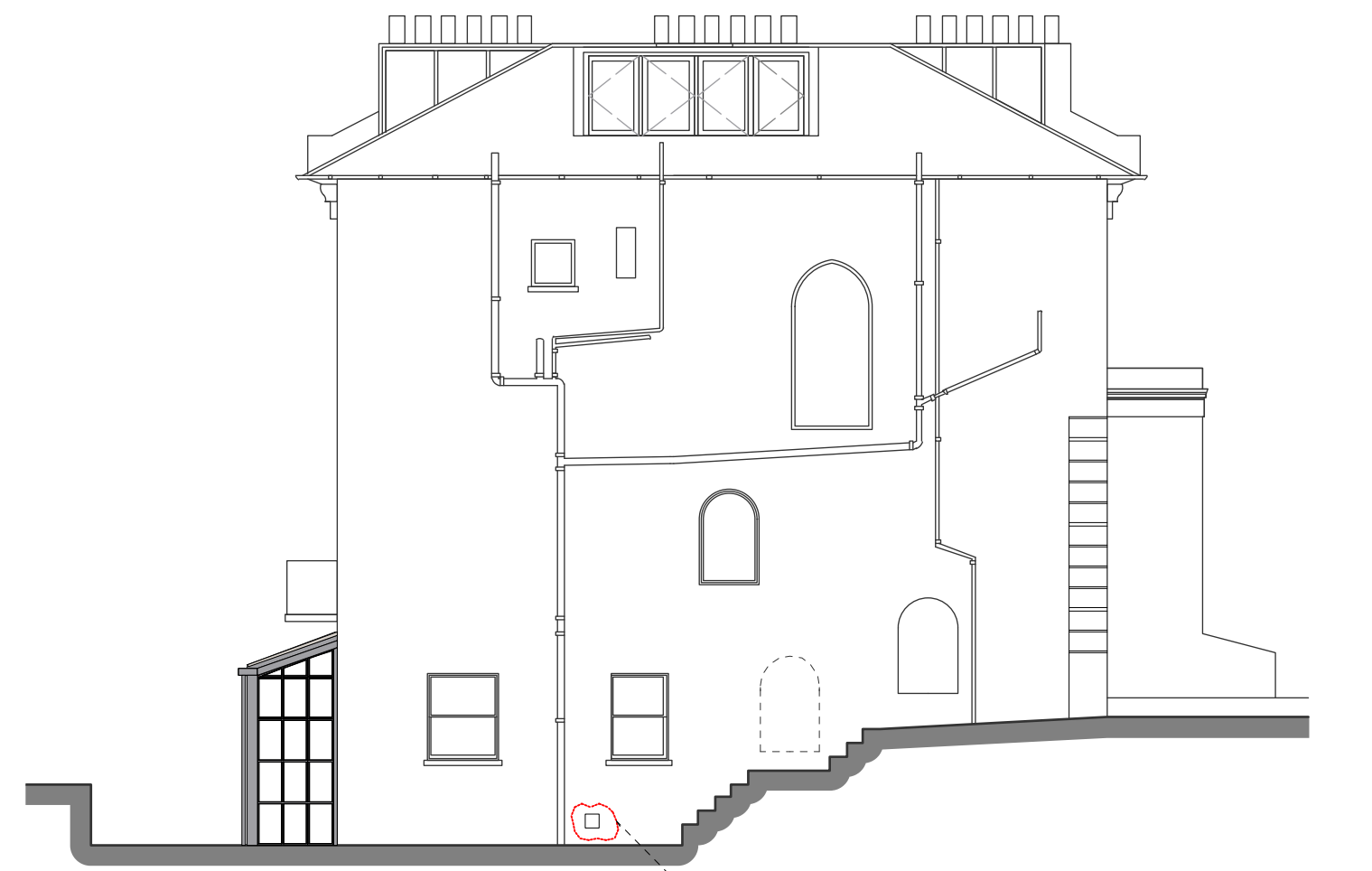
- All dimensions to be verified on site
- To be read in conjunction with all relevant documents
- In the event of discrepancy notify the Architect immediately
- All steel structural elements to be finished with intumescent coating, 30 minutes fire resistance. For all structural elements and connection see SE drawings.
- This document is copyright of Hugh Cullum Architects Ltd

Issue Status

- SK Sketch	- T Tender	- P Permissions
- D Design	- E Existing Condition	- C Contract



Plan scale 1:50



Side elevation scale 1:100

External grill to be painted to match external wall render

Section AA scale 1:20

General Notes

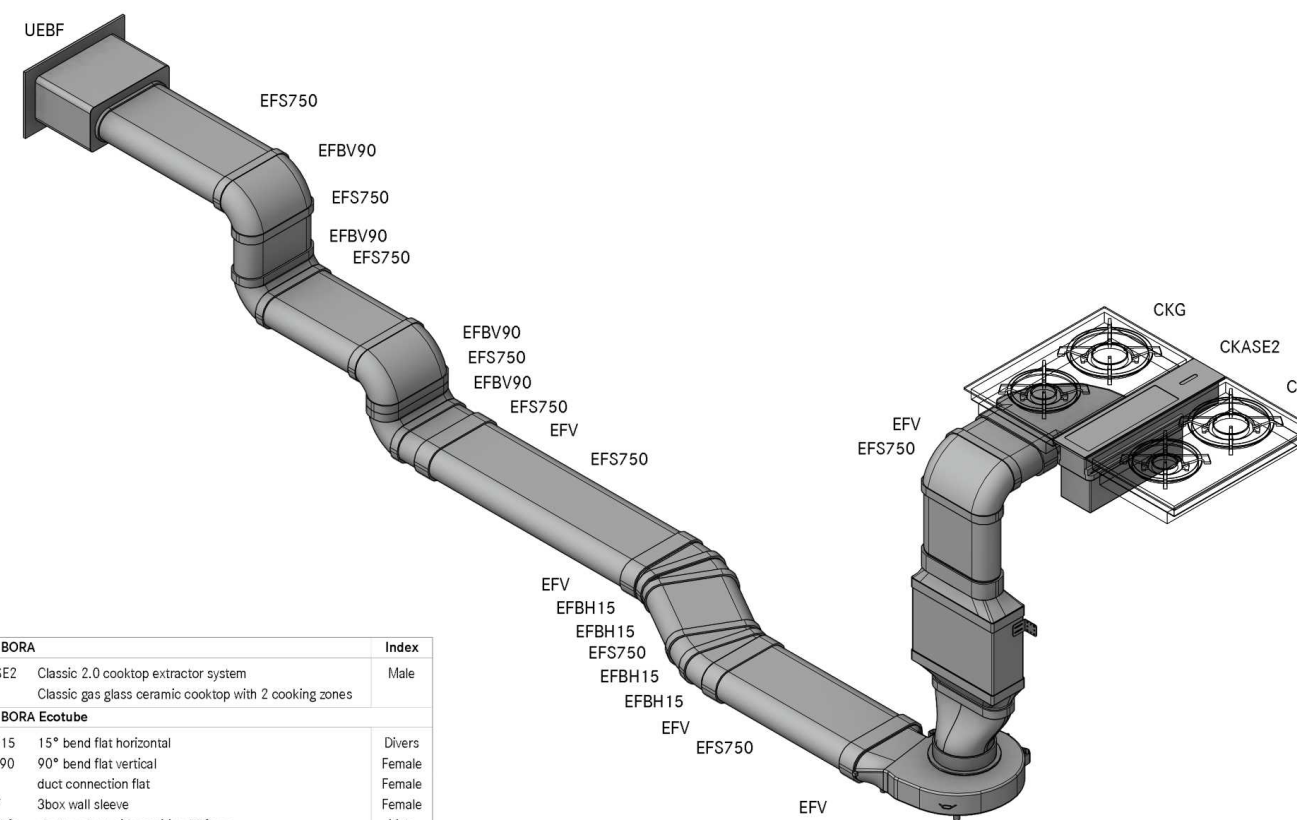
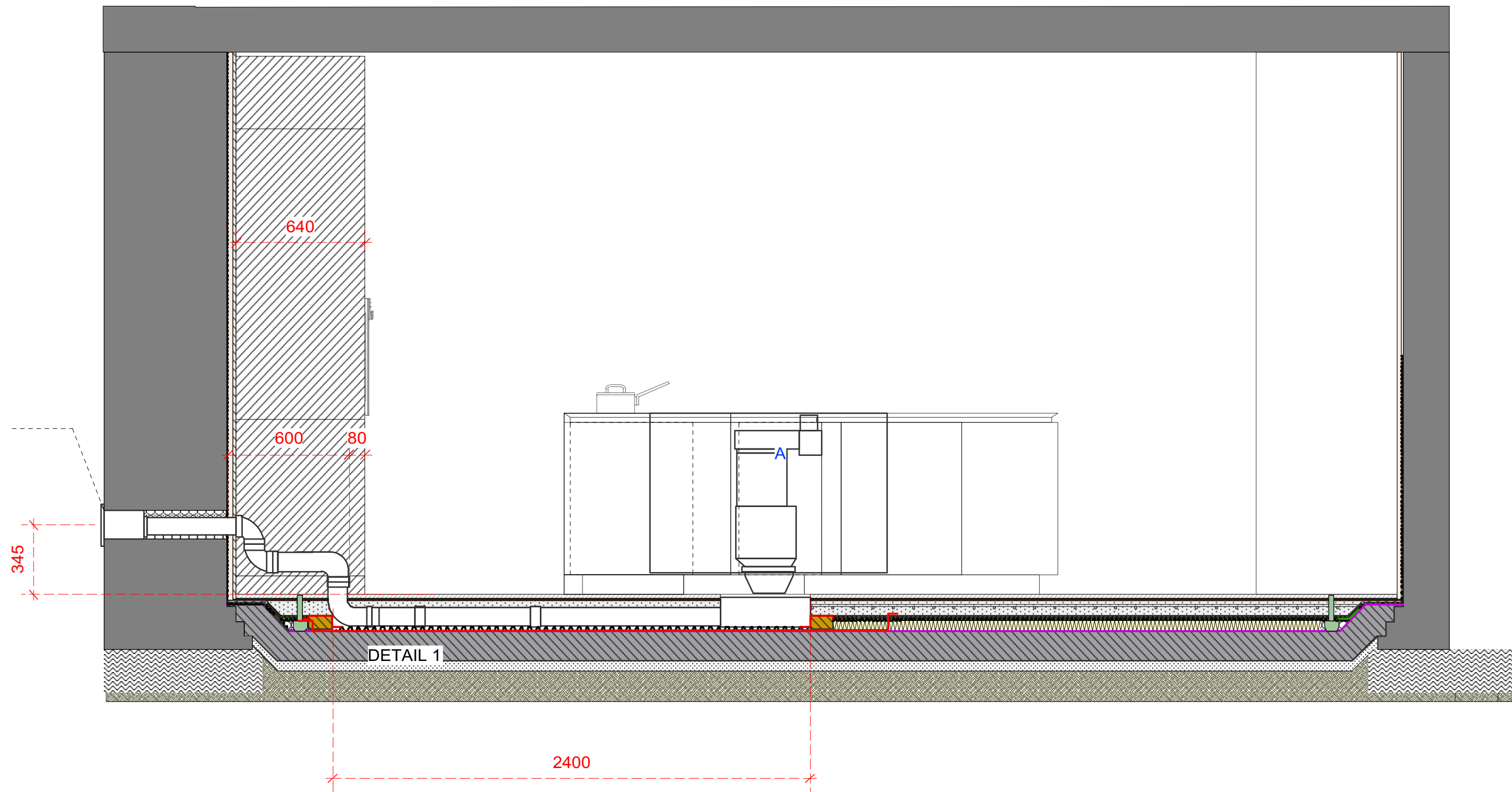
- All dimensions to be verified on site
- To be read in conjunction with all relevant documents
- In the event of discrepancy notify the Architect immediately
- All steel structural elements to be finished with intumescent coating, 30 minutes fire resistance. For all structural elements and connection see SE drawings.
- This document is copyright of Hugh Cullum Architects Ltd

Issue Status

- SK Sketch	- T Tender	- P Permissions
- D Design	- E Existing Condition	- C Contract

rev note date (drawn by/checked by)

External grill to be painted to match external wall render



Count	Item	BORA	Index
1	CKASE2	Classic 2.0 cooktop extractor system	Male
2	CKG	Classic gas glass ceramic cooktop with 2 cooking zones	
Item BORA Ecotube			
4	EFBH15	15° bend flat horizontal	Divers
4	EFBV90	90° bend flat vertical	Female
5	EFV	duct connection flat	Female
1	UEBF	3box wall sleeve	Female
4	EFS750	shallow duct with partition 750mm	Male

Please check for accuracy. Seats included. Are optically not displayed.