



South West Elevation
Scale 1:50

ica Architects Ltd.
registered in Scotland company no 267727

Do not scale from this drawing. If in doubt, ask.
This drawing is the property of ica and must not
be copied, reproduced or disclosed without
written permission.

revisions // by // date //

Stair tread lights - wall mounted

Linear LED strips to windows and building ledges

Circular soffit light

Directional uplighter

Illuminated signage

1. Internally illuminated blade signs to replace existing. See PL(00)202

2. Internally illuminated globe signs. See PL(00)202

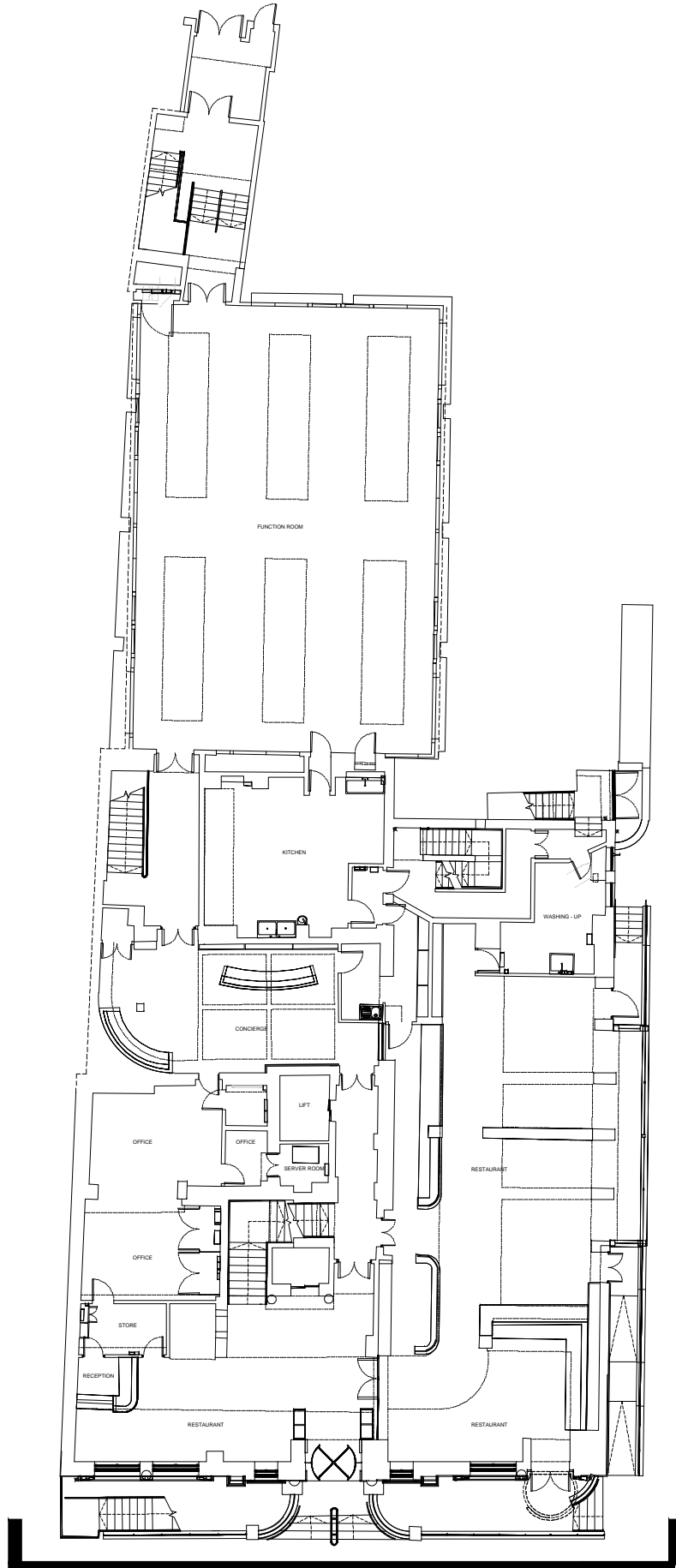
3. Curved canopy sign (internally illuminated) to replace existing. See PL(00)202

4. See PL(00)202

5. Decorative Canopy Lamps to underside of existing canopy over main hotel entrance

6. LED strip lights to highlight building feature ledge/s.

NOTE: To be read in conjunction with Elektra Lighting and Signage Strategy documents.



Plan Key
Scale 1:250

North

0m 0.5m 2m

Merchant Exchange
20 Bell Street
Glasgow
G1 1LG

+44(0)141 552 2194
weareica.com

project title //

Ambassadors Bloomsbury Hotel
Upper Woburn Place
London

drawing title //

Proposed
South West Elevation

issue stage //

PLANNING

date //	drawn //	scale @ A1 //
APR 23	CP	1:50
project //	dwg number //	revision //
1430	PL(00)302	A