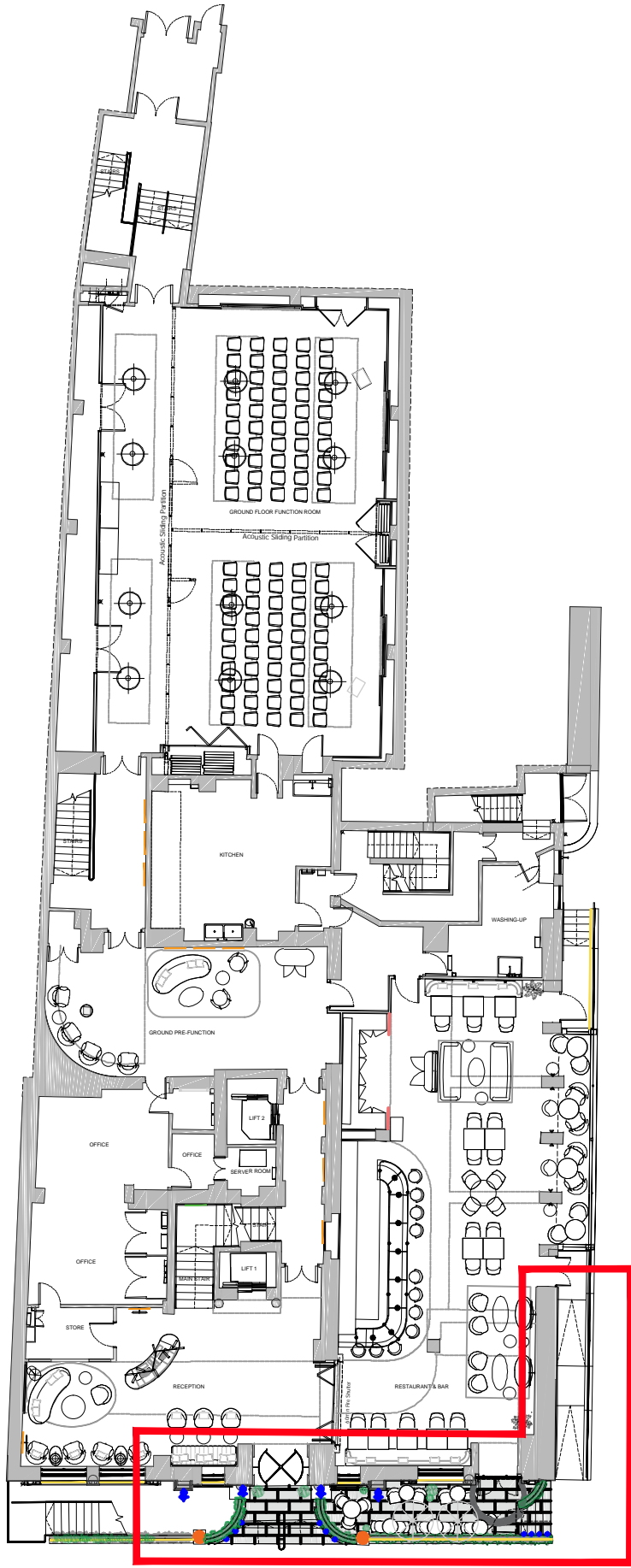


KEY:

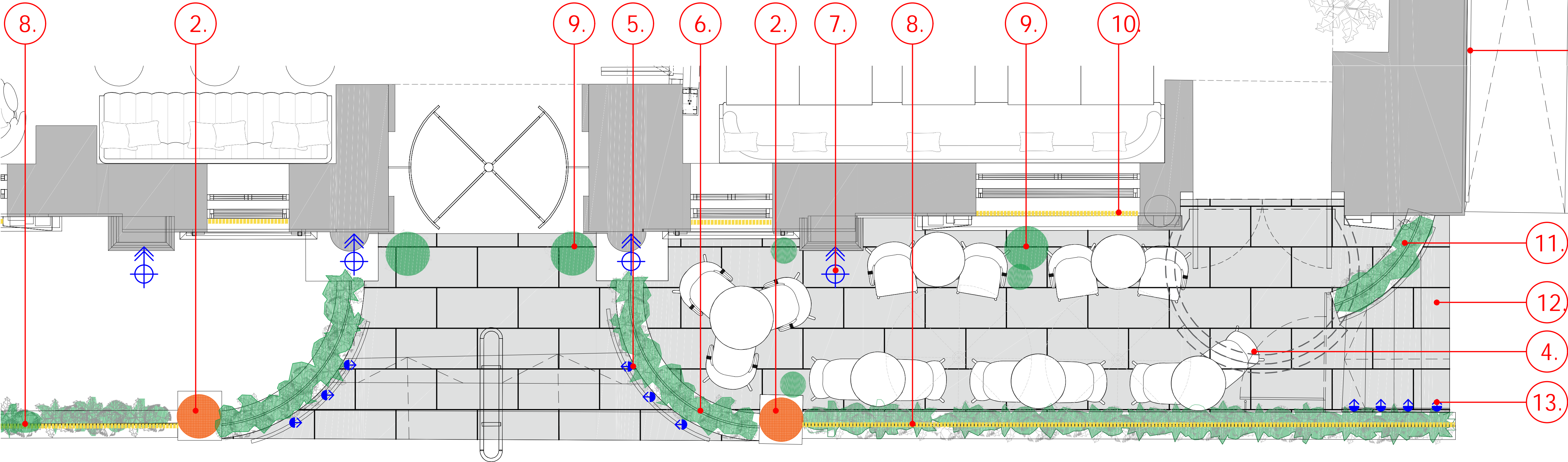
1. See PL(00)202
2. Internally illuminated sign globes. See PL(00)202
3. See PL(00)202
4. New metal gate to close off access to terrace out of operational hours. See PL(00)202
5. Wall mounted tread washing lights
6. Existing glass balustrade to terrace edge
7. Column uplighters
8. LED light strip along top of box planters
9. Plant pots with feature planting
10. LED strips to window sills
11. Box planters fixed to top of terrace wall behind existing glass balustrade
12. New anthracite grey paving to terrace, steps and hotel entrance
13. Wall mounted tread washing lights
14. Existing access ramp and side entrance.
15. Replacement lights - wall mounted downlighter fittings to the ramp edge

NOTE: To be read in conjunction with Elektra Lighting and Signage Strategy documents.



PLAN KEY

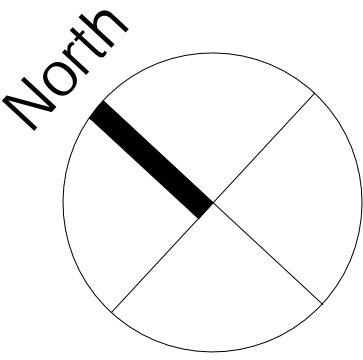
Scale 1:500



PLAN EXTRACT

Scale 1:50

0m 1m 4m



Merchant Exchange
20 Bell Street
Glasgow
G1 1LG

+44(0)141 552 2194
weareica.com



project title //
Ambassadors Bloomsbury Hotel
London

drawing title //
Outdoor Terrace
Proposed Ground Floor

issue stage //
PLANNING

date // drawn // scale @ A3 //
APR 23 / 1:50

project // dwg number // revision //
1430 PL(00)201.2 /