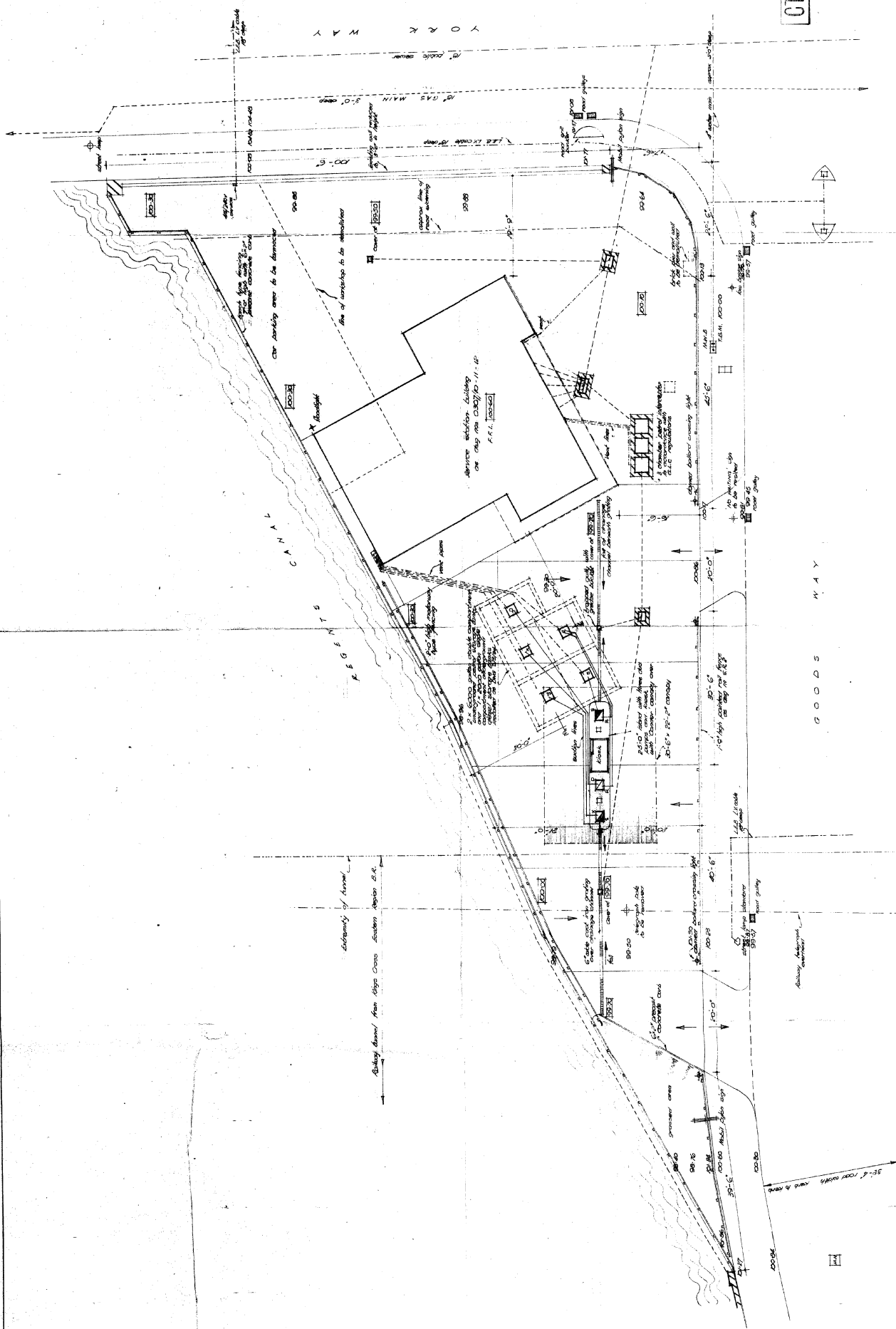


NOTES



LONDON RECORD OF CAMDEN  
PRESENTED TO THE PLANNING AND  
DEVELOPMENT ~~COMMISSION~~ APPLICATIONS  
16 FEB 1966

CTP/K14/2/1/1370

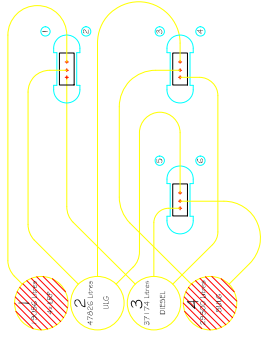
PROPOSED SERVICE STATION  
for A. J. GALTER & CO LTD  
UNION OF GOODS WAY  
AND YORK WAY

KING'S CROSS	DRAWN	CHECKED	APPROVED
	DATE OCT 65	DATE OCT 65	DATE

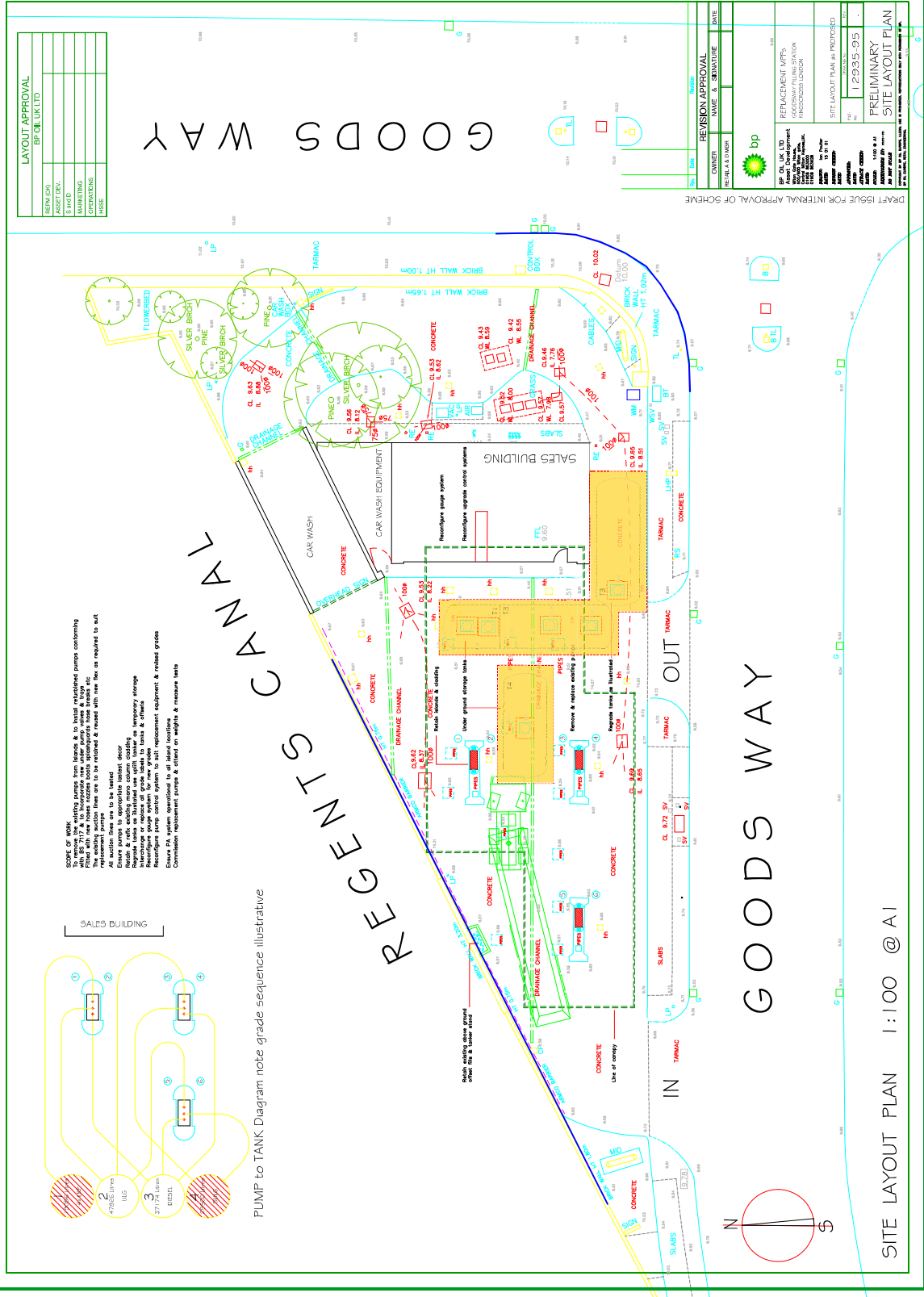
**DRAWING NO.**

0307/663/6

TANK SCHEDULE				PUMPS					
TANK NO	DEPTH	CAPACITY(X)	GRADE	1	2	3	4	5	6
1	1.11	19056	SULG						
2	1.22	47926	4*						
3	1.08	37174	ULG						
4	0.91	29590	DERV						



PUMP to TANK Diagram note grade sequence illustrative

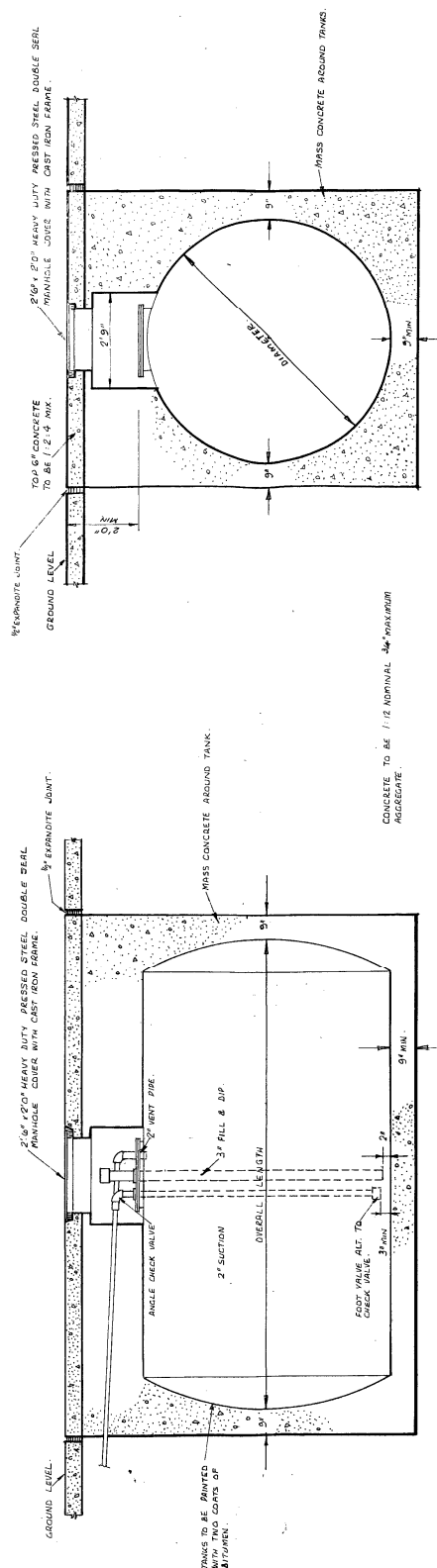
[illegible]

SITE LAYOUT PLAN 1:100 @ A1

PRELIMINARY PROPOSAL for BP approval

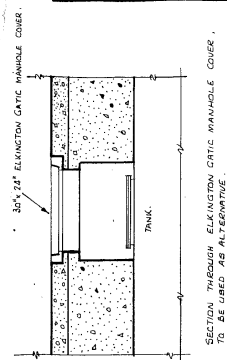
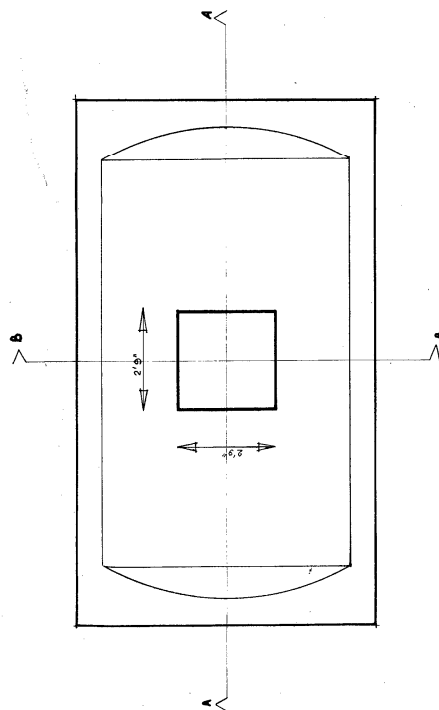


NOTES



SECTION A-A

SECTION B-B.



NOMINAL CAPACITY	DIAMETER	OVERALL LENGTH
500 GALL.	4' 6"	5' 3"
1000 GALL.	4' 6"	11' 3"
1000 GALL. DOUBLE COMPT.	4' 6"	11' 3"
2000 GALL.	6' 6"	10' 3"
2000 GALL. DOUBLE COMPT.	6' 6"	10' 3"
3000 GALL.	7' 0"	13' 6"
3000 GALL. DOUBLE COMPT.	7' 0"	13' 6"
4000 GALL.	8' 0"	14' 0"
4000 GALL. DOUBLE COMPT.	8' 0"	14' 0"
5500 GALL.	8' 0"	17' 0"
5500 GALL. DOUBLE COMPT.	8' 0"	17' 0"
6000 GALL. SWS & DBL. COMPT.	6' 0"	20' 6"



**MOBIL OIL CO. LTD.**

K14 2-1 1370

STANDARD TANK INSTALLATION  
CONCRETE CHAMBER

DRAWN JES. DATE APRIL 64	CHECKED DATE	APPROVED DATE
-----------------------------	-----------------	------------------

DRAWING NO.

၈၂၈

## PLAN

# D.2 2011 Certificate of tank decommissioning

# Certificate of Tank Decommissioning

**Certificate No:** 2011-2087

**Site and address:**

BP GOODS WAY SERVICE STATION  
GOODS WAY  
KINGS CROSS  
LONDON  
NW1 1UR

**Date** 15<sup>th</sup> August 2011

**Decommissioning Method:**

**BritFoam™** Resin based hardfoam

**Customer:**

Broham Forecourt Developments Limited  
The Courtyard, Wyldingtree Farm, Weald Bridge Road,  
North Weald, Near Epping, Essex. CM16 6AS

Neil Roberts, LFEPA, Petroleum Group – Fire Safety Regulation  
2<sup>nd</sup> Floor, 169 Union Street, London, SE1 0LL

Tank Number	Capacity Litres	Suction Lines	Offsets	Vents	Manhole	Product
1	18393	No	Yes	Yes	Yes 2	Diesel
2	47700	No	No	Yes	Yes	Petrol
3	36900	No	Yes	Yes	Yes 2	Diesel
4	29500	No	No	Yes	Yes	Petrol
5						
6						
7						

We certify that the above below-ground tanks, associated pipe work and manhole chambers have been decommissioned in line with the guidance set out in APEA/IP's Design, Construction, Modification, Maintenance and Decommissioning of Filling Stations, 3<sup>RD</sup> Edition, Revised June 2011 (the "Blue Book") and have been filled with **BritFoam™** a hydrophobic resin-based hard foam. 157cm dispensed.

Operatives: Kevin Lees

Signature:



For and on behalf of Lees Industrial Services Limited  
322 Haydock Lane  
Haydock, St Helens  
Merseyside, WA11 9UY  
T 01508 471600/F 01508 471602  
Website: [www.leesindustrialservices.co.uk](http://www.leesindustrialservices.co.uk)

# Appendix E

## Bam Ritchie 2015 Ground investigation records



# Borehole Log

Status: **DRAFT**

**WS4**

Sheet 1 of 1

Project: Filling Station, Kings Cross

Project No: 5679

Ground Level: -

Coordinates:

Description	Legend	Depth (m)	O.D. Level (m)	Sample / Test			Casing (Water) Depth (m)	Installations
				Type	Depth (m)	Test Results		
CONCRETE with rebar		0.30						
MADE GROUND soft to firm dark brown slightly sandy very gravelly CLAY with medium cobble content. Gravel is medium and coarse angular and subangular brick and concrete. Cobbles are angular concrete. Sand is fine to coarse.		1.20						
MADE GROUND soft dark brown slightly gravelly CLAY. Gravel is black angular flint. Hydrocarbon odour.		2.80		PID ES	2.80 2.80	0.30ppm		
Borehole Complete at 2.80 m								

## Water Level Observations

Hole Diameter Detail			Chiselling / Slow Progress			Date	Water Strike (m)	Standing Time (mins)	Standing Level (m)	Casing Depth (m)	Depth Sealed (m)
Diameter (mm)	Depth (m)	Casing Depth (m)	From (m)	To (m)	Time (hours)						

## Progress

Client: Carillion  
 Consultant: ARUP  
 Dates Drilled: 17/02/2015  
 Plant: Terrier  
 SPT Hammer: N/A  
 Date Printed: 19/02/2015  
 Drilled By: GT  
 Logged By: JC  
 Checked By: DB

Date	Hole Depth	Casing Depth	Water Depth	Remarks

Remarks: First 1.2mbgl dug by 5 ton excavator.



# Borehole Log

Status: **DRAFT**

**WS5**

Sheet 1 of 1

Project: Filling Station, Kings Cross

Project No: 5679

Ground Level: -

Coordinates:

Description	Legend	Depth (m)	O.D. Level (m)	Sample / Test			Casing (Water) Depth (m)	Installations
				Type	Depth (m)	Test Results		
CONCRETE with rebar.		0.30						
MADE GROUND: Soft to firm dark brown slightly sandy very gravelly CLAY with high cobble content. Gravel is fine to coarse angular brick and concrete fragments. Cobbles are concrete fragments. Sand is fine to coarse.		1.30						
Soft mottled black and dark brown slightly gravelly CLAY with very strong diesel hydrocarbon odour.		2.50		PID ES	2.50	30.60ppm		
Firm dark brown CLAY. (LONDON CLAY FORMATION)		3.00						
Borehole Complete at 3.00 m								

Water Level Observations							
Hole Diameter Detail			Chiselling / Slow Progress			Date	Water Strike (m)
Diameter (mm)	Depth (m)	Casing Depth (m)	From (m)	To (m)	Time (hours)		

Progress				
Date	Hole Depth	Casing Depth	Water Depth	Remarks
Remarks: First 1.2mbgl excavated by 5 ton machine.				

Client: Carillion  
 Consultant: ARUP  
 Dates Drilled: 17/02/2015  
 Plant: Terrier  
 SPT Hammer: N/A  
 Date Printed: 19/02/2015  
 Drilled By: GT  
 Logged By: JC  
 Checked By: DB



# Borehole Log

Status: **DRAFT**

**WS6**

Sheet 1 of 1

Project: Filling Station, Kings Cross

Project No: 5679

Ground Level: -

Coordinates:

Description	Legend	Depth (m)	O.D. Level (m)	Sample / Test			Casing (Water) Depth (m)	Installations
				Type	Depth (m)	Test Results		
CONCRETE with rebar		0.30						
MADE GROUND Soft dark brown slightly sandy very gravelly CLAY with medium cobble content. Gravel is angular brick and concrete. Cobbles are concrete and brick. Sand is fine to coarse.		2.70						
Firm orangish brown CLAY. (LONDON CLAY FORMATION)		3.00		PID ES	2.80 2.80	0.10ppm		
Borehole Complete at 3.00 m								

Water Level Observations							
Hole Diameter Detail			Chiselling / Slow Progress			Date	Water Strike (m)
Diameter (mm)	Depth (m)	Casing Depth (m)	From (m)	To (m)	Time (hours)		
						17/02/15 17/02/15	1.60 1.60

Progress				
Date	Hole Depth	Casing Depth	Water Depth	Remarks

Client: Carillion  
 Consultant: ARUP  
 Dates Drilled: 17/02/2015  
 Plant: Terrier  
 SPT Hammer: N/A  
 Date Printed: 19/02/2015  
 Drilled By: GT  
 Logged By: JC  
 Checked By: DB

Remarks: First 1.2mbgl excavated by 5 ton machine.