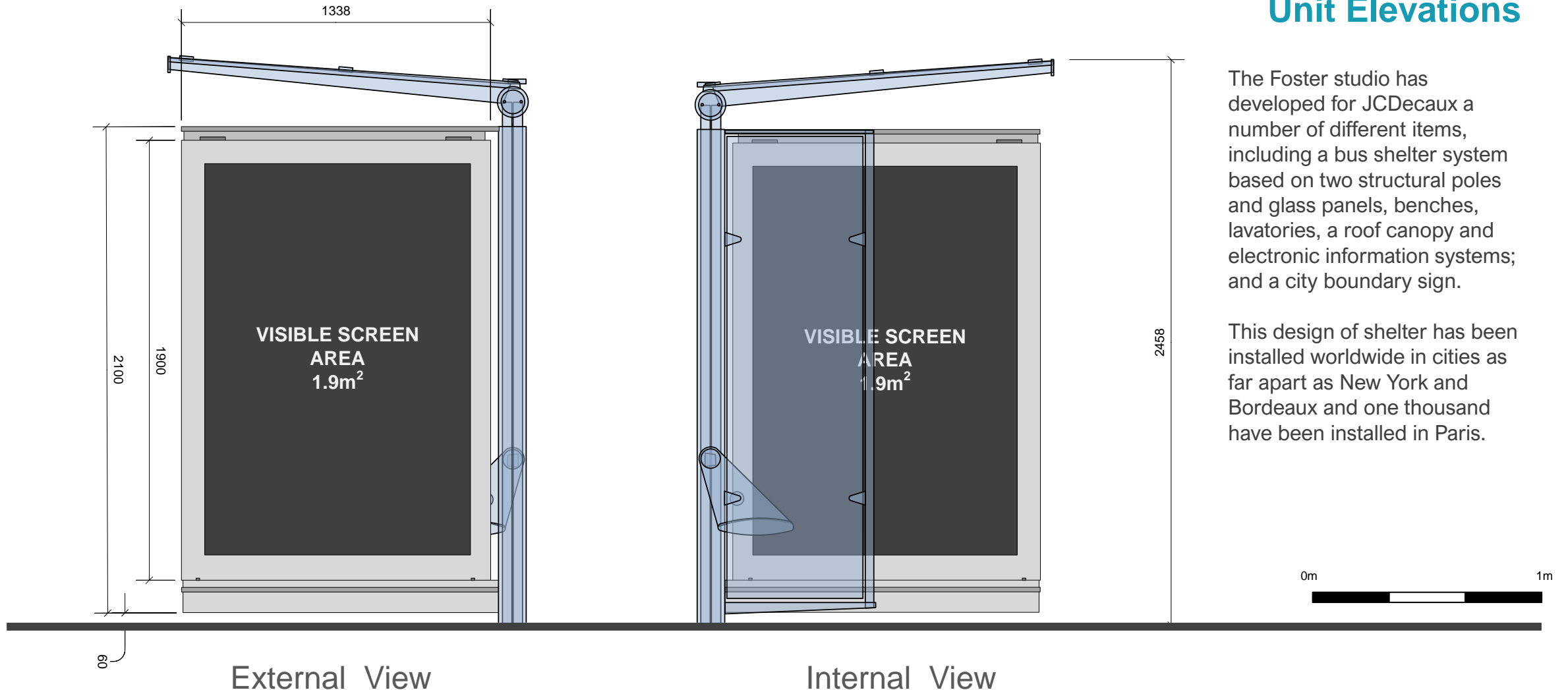


## London Borough of Camden

### Roadside Advertising Estate

## Digital Shelter Upgrade

## Unit Elevations



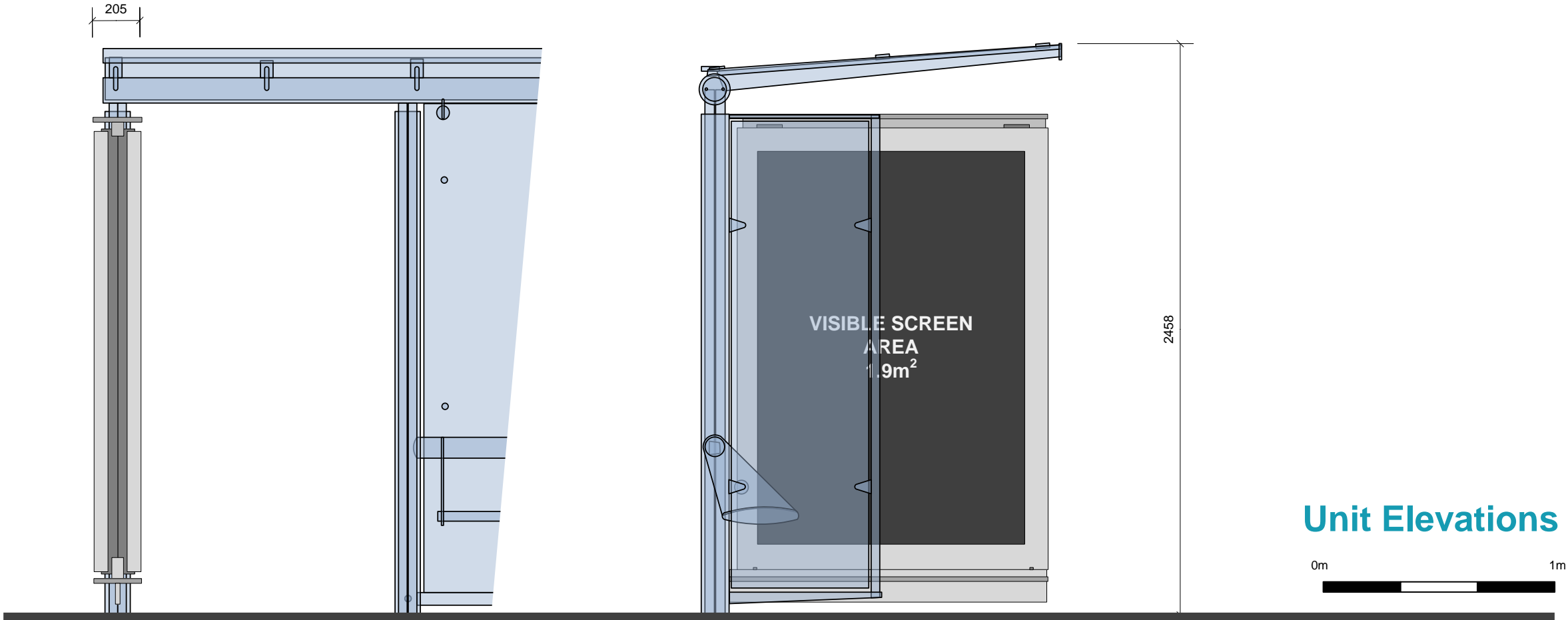
The Foster studio has developed for JCDecaux a number of different items, including a bus shelter system based on two structural poles and glass panels, benches, lavatories, a roof canopy and electronic information systems; and a city boundary sign.

This design of shelter has been installed worldwide in cities as far apart as New York and Bordeaux and one thousand have been installed in Paris.

# Foster Shelter

JCDecaux

Internal Facing Advert A  
Digital



Side View

Internal View

Unit Elevations

# Foster Advertised Shelter

Internal Facing Advert A

DigitalSpecification

## Installation

- Tested in factory before shipment
- Easy to install with direct foundations on the floor (using chemical anchors)
- Transported fully assembled, to facilitate on site installation

## Sustainable Development

- Power efficient: Lower power consumption due to dynamic dimming control that uses approximately 30-40% less energy and minimizes the impact on the environment.
- Furniture is mainly built with long life and recyclable materials.

## Display Panels

Size	86"
Resolution	3840 x 2160
Brightness	Night Time max 600Cdm²
Angle of Visibility	H 178° V 178°
Contrast ratio	7000:1
Display colour	72% of NTSC colour gamut
Backlight technology	Direct LED
Number of colours	1,064 Billion

## Operating Conditions

Temperature	min -30°C max 50°C
Humidity	5%-100%
Orientation	Portrait

## Weight and Dimensions

Global	1338(W) x 1900(H) x 260(D)mm
Visible	1050(W) x 1860(H) mm
Visible area	1.9m²
Weight	510 kg
Screen aspect ratio	16/9

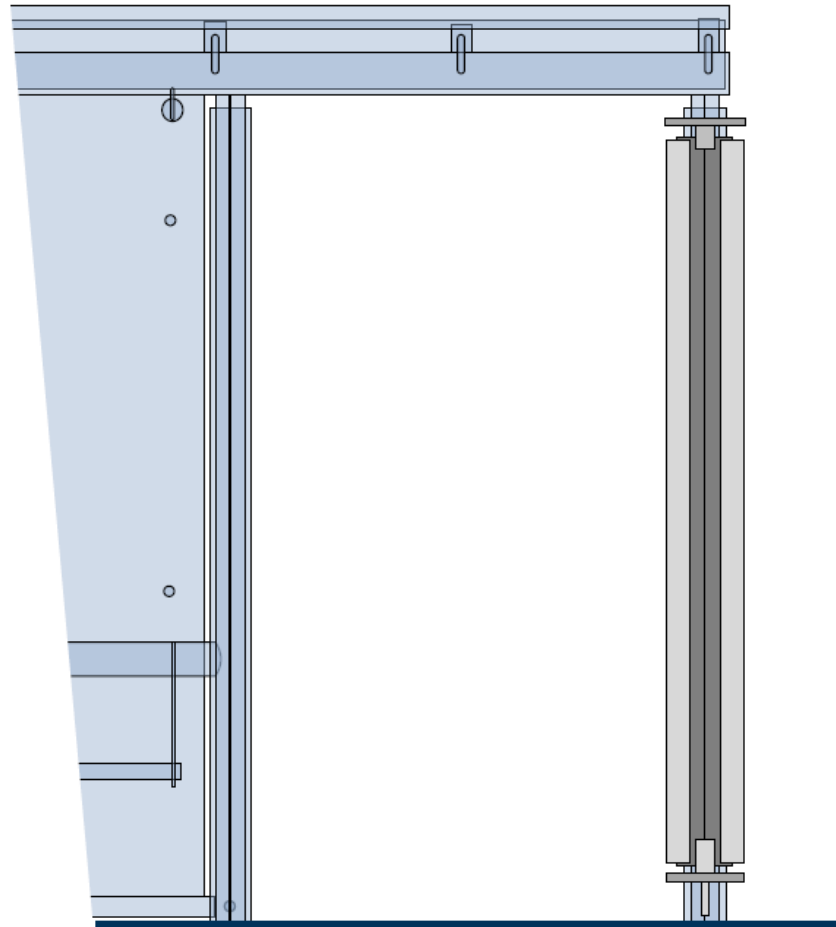
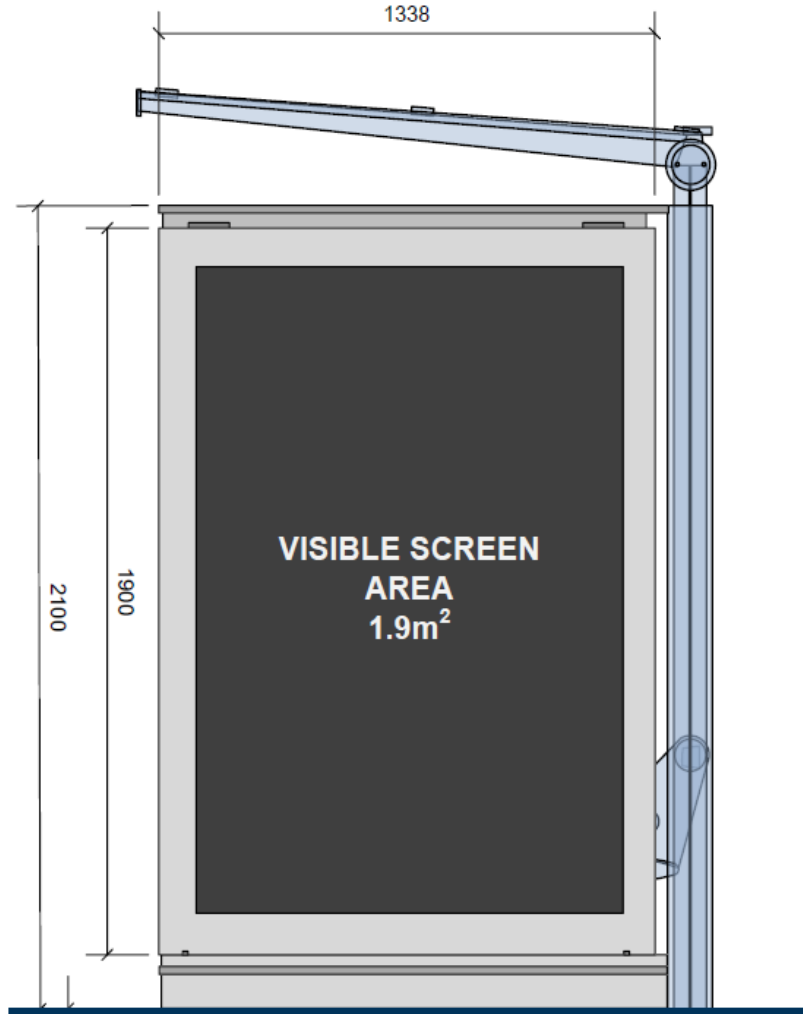
## Electricity

Input Voltage	AC 190-240 V 50/60hz
Max Power	3550 W
Average Power	1012 kWh

# Foster Advertised Shelter

External Facing Advert B  
Paper

**Foster +  
Partners**



The Foster & Partners shelter is a unique design created for JCDcaux. The design includes a range of furniture that share the familial architectural elements and appearance of the shelter.

This design is the found across the Borough's estate, other London Borough's and World Cities including New York and Paris.



1:20 @ A4

# Foster Advertised Shelter

## External Facing Advert B Paper Specification

### Installation

- Tested in factory before shipment
- Easy to install with direct foundations on the floor (using chemical anchors)
- Transported fully assembled, to facilitate on site installation

### Sustainable Development

- Power efficient: Lower power consumption due to dynamic dimming control that uses approximately 30-40% less energy and minimizes the impact on the environment.
- Furniture is mainly built with long life and recyclable materials.

### Display Case

Fabricated of aluminium extrusions supported by top and bottom arms welded to a frame upright. Case fitted with a top hung door

Dust and water ingress protection index: IP34

Houses the mains connection board.

Lit with 4 fluorescent tubes

Excellent backlight quality provided by internal diffusers

Posters may be suspended by clips or a fold and rail system

### Operating Conditions

Temperature	min -30°C max 50°C
Humidity	5%-100%
Orientation	Portrait

### Weight and Dimensions

Global	1338(W) x 1900(H) x 260(D)mm
Visible	1138(W) x 1760(H) mm
Visible area	1.9m²
Display aspect ratio	16/9

### Electricity

Connected to public lighting or mains supply. Factory tested for electrical insulation and earth continuity. Supply Voltage AC 220-240 V 50hz protected by Residual Current Circuit protection device (RCCD) 25A-30mA

Main Isolator	6A
Power Rating	216 VA

# Foster Advertised Shelter

## General Product Information

### Performance

---

- Optional AR (Anti-Reflective) laminated cover glass to improve image visibility
- Displays superior quality content that atomically programmed to change at intervals due to the high resolution of the screen
- Maximum brightness is 2500Cdm<sup>2</sup> during daylight and 600Cdm<sup>2</sup> at night in line with the Institute of Lighting Professionals recommendations
- This product has been designed to optimize manufacturing and operational costs and minimise waste

### Robustness and Durability

---

- The product has been specially designed for direct outdoor use in a wide range of environment and temperature variations to display crisp images
- Unit brightness levels is unaffected by extreme temperatures and does not degrade over time.
- Bumper units are available to protect the base of the unit from collisions

### Certifications

---

CE

### Manageability

---

- Extensive monitoring capability to be fully programmable in content
- In-built intelligent monitoring/control and maintenance features
- Option to locate PC player in remote location

### Modularity

---

- Modular design for simple on-site service and construction
- Product available for two sided use and also available with a single advertising side and blank reverse facade

### Vandalism

---

- Front-face in laminated tempered glass to withstand impact
- Furniture opening guaranteed by the use of special keys
- Screws and fixing gears are invisible
- Furniture built with unalterable materials