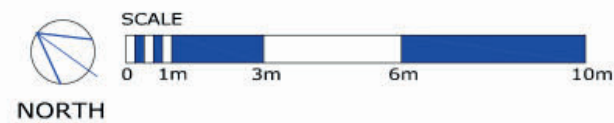


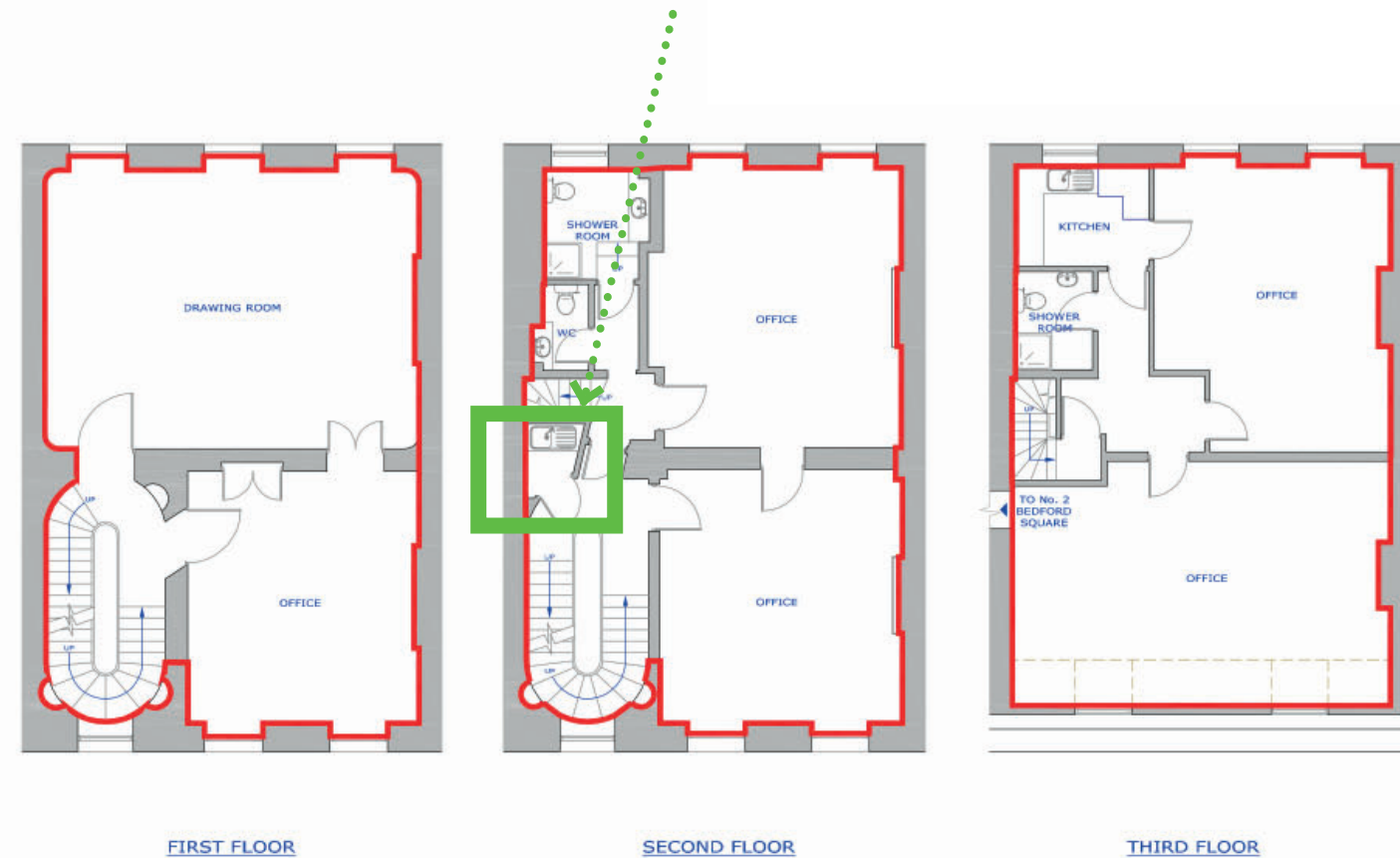
Project 2

- Replace the 2 basement level modern sash windows with 2 sets of French doors.
- Set within existing openings
- To improve access to courtyard from staff green-room and to improve alternative means of escape



Project 1

- Create/reinstate new 2nd floor link between No.1 and No.2 Bedford Square.
- Link has no visual impact on the stairwell on No.1.
- Archive photographs indicate there was a link in this location between the 1950s-1980s.



Cameron Mackintosh Limited Offices Nos.1-2 Bedford Square

Minor Alterations

Key Plan - Showing Location of Proposed Works

Title Key Plan
 Drawing No. DMT/Nos.1-2/JM/SK/00/02
 Date 20230510
 Scale NTS @ A3