

17a Chesterford Gardens, London NW3 7DD

2022/3296/P Record of tree protection in relation to the extension

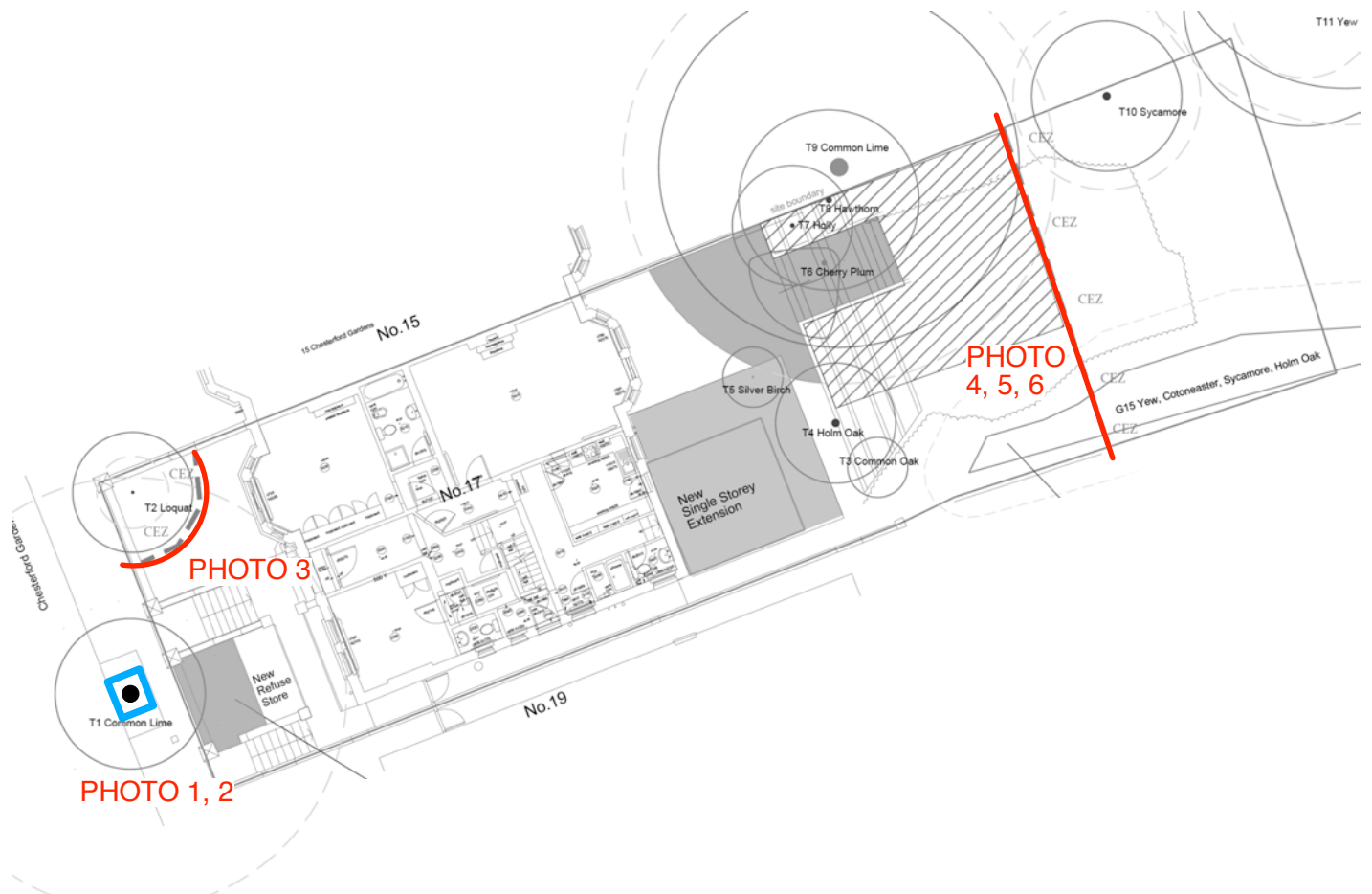


Fig.1: Extract plan from

Arboricultural Impact Assessment Method Statement & Tree Protection Plan (to BS:5837 2012)
by Trevor Heaps BSc, MICFor, RC. Arbor. A. Date: 25th July 2022

Highlighted in colour to show required

- Stem boxed in with wooden plyboards to avoid accidental damage
- Protective fencing



PHOTO 1 & 2: TREE 1

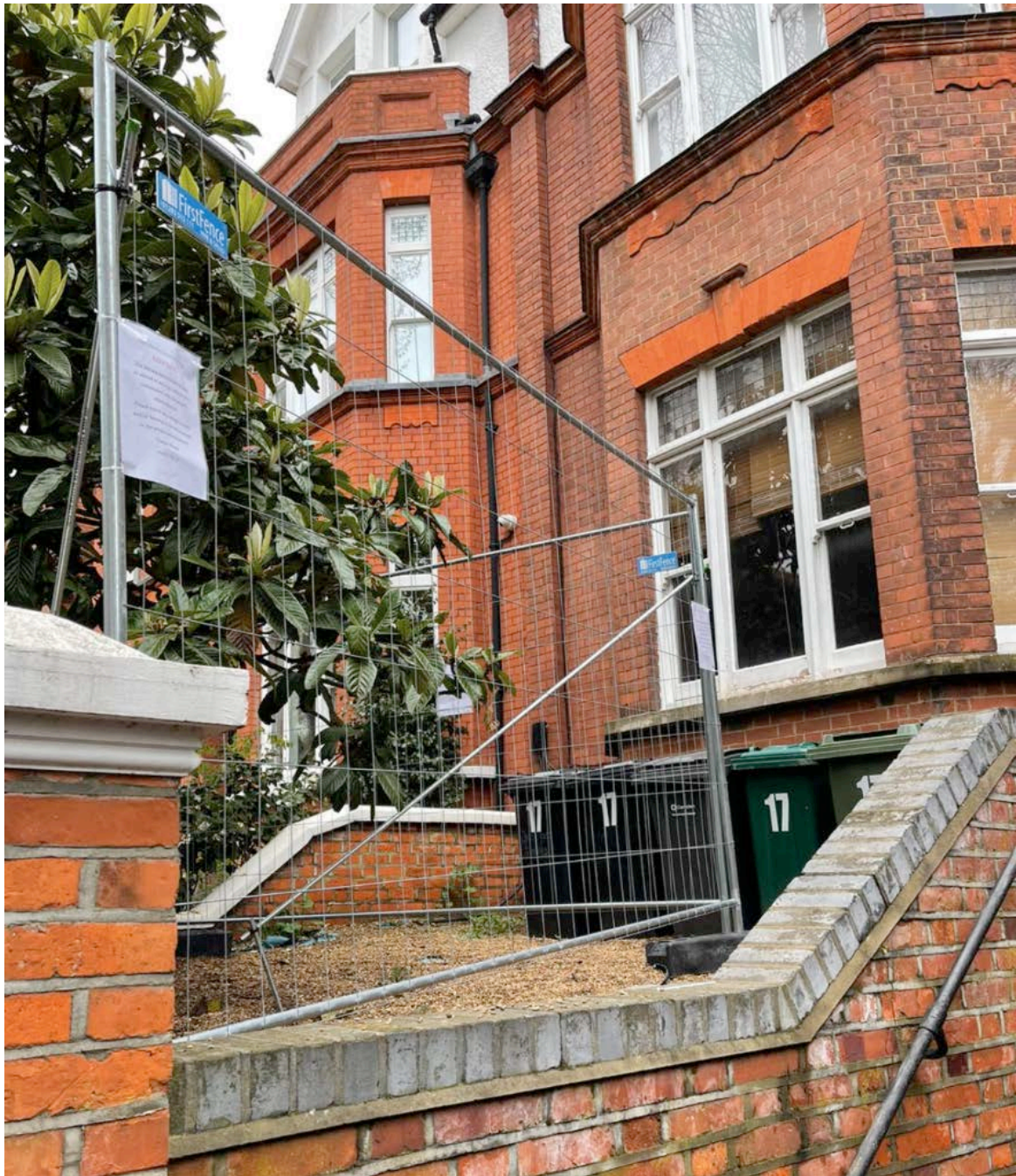


PHOTO 3: TREE 2



PHOTO 4/5/6: Work exclusion zone

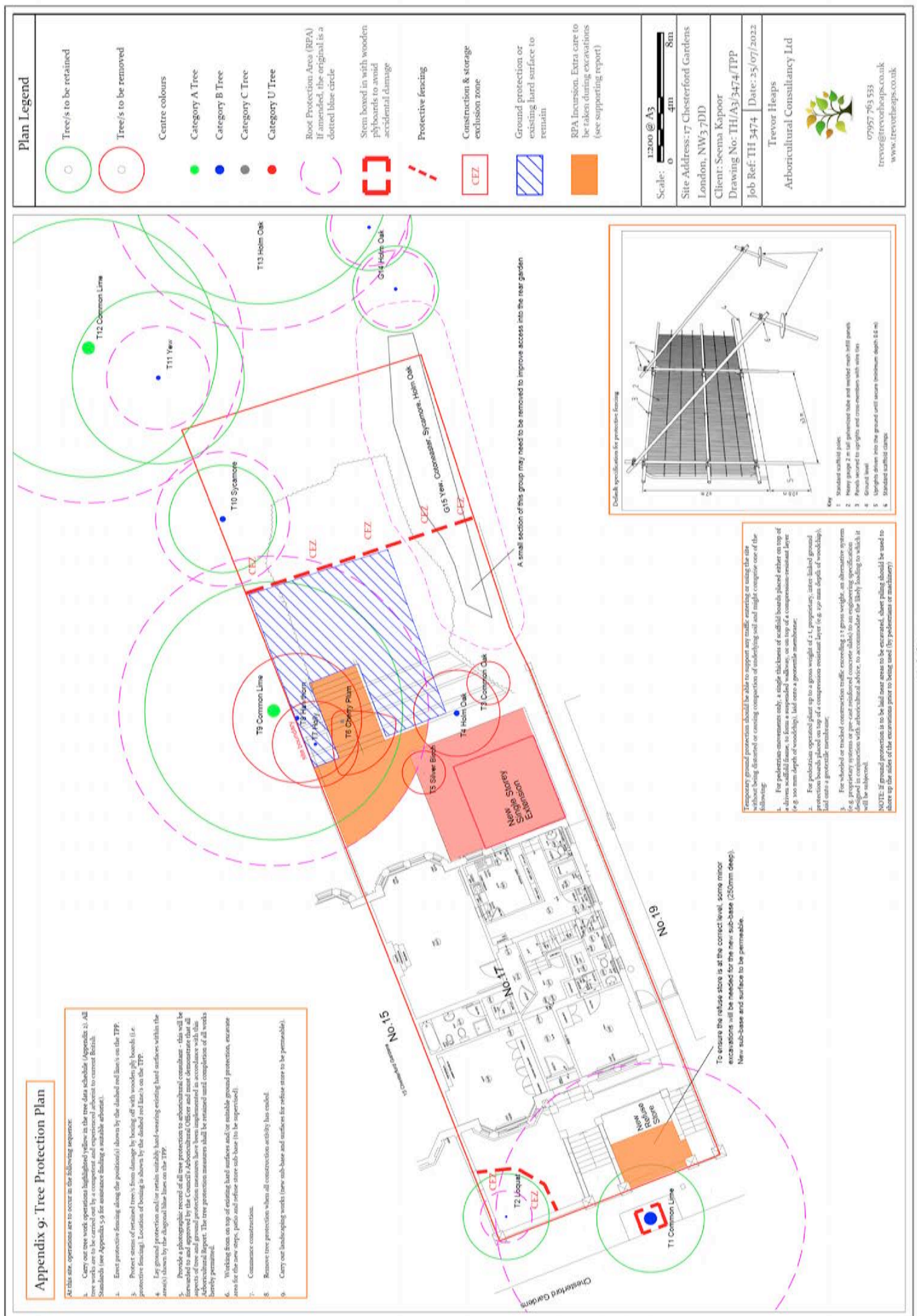


Fig.2: Plan from Arboricultural Impact Assessment Method Statement & Tree Protection Plan by Trevor Heaps BSc, MICFor, RC. Arbor. A. Date: 25th July 2022