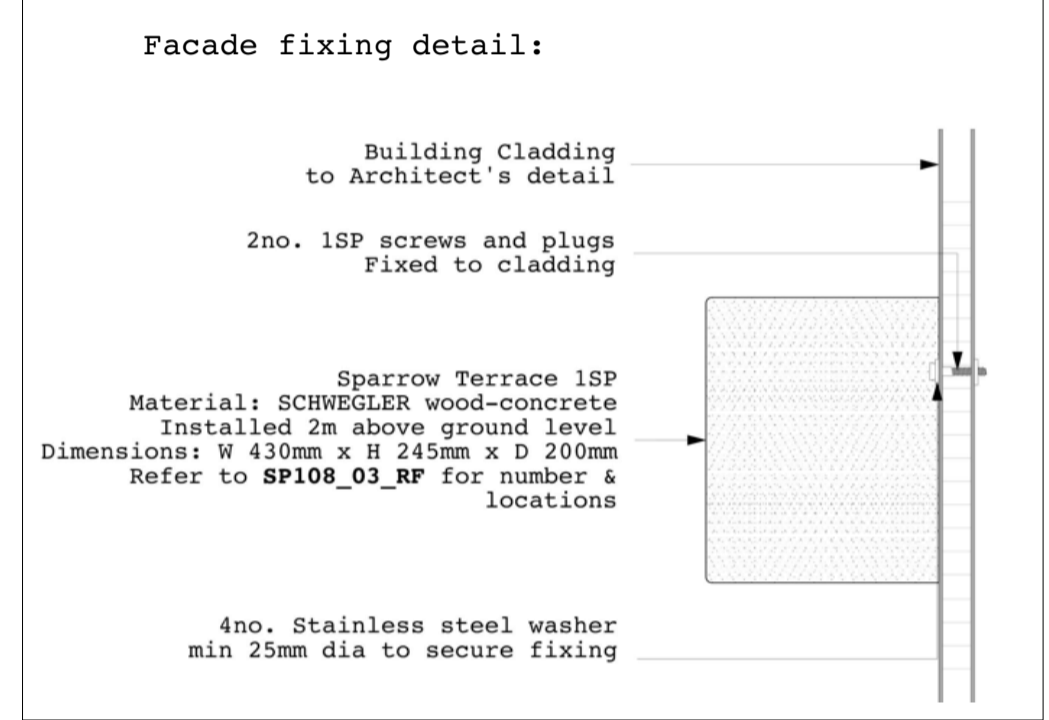


- Key:**
- Biodiverse roof areas
 - Habitat piles (logs, rocks, sand, manila rope & deadwood)
 - Intensive planting areas on commercial building roof terraces, levels 04 & 05
 - Perimeter planting on commercial building roof terraces, levels 04, 05 & 06

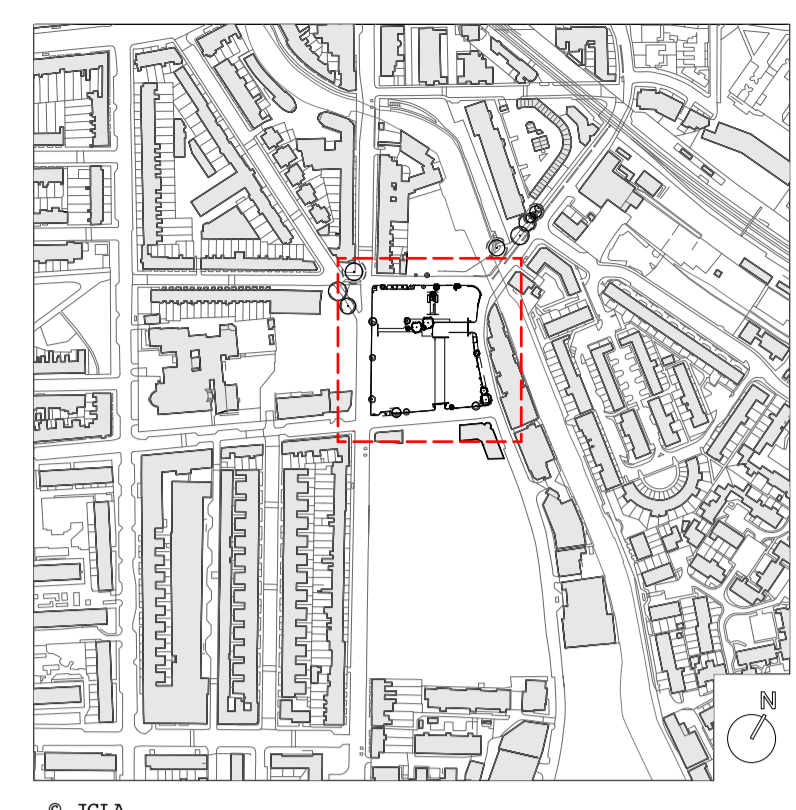
HB1: Schwegler Sparrow Terrace bird box
 - Target species: Sparrows
 External dimensions:
 W 43 x H 24.5 x D 20 cm.
 Weight: approx. 15 kg.
 - Material: Woodcrete
 - Fixing detail: Affixed to metal mesh facade using ISP (screws and plugs), refer to detail provided.



HB2: Schwegler Nest box 1B woodcrete
 - Target species: Great, Blue, Marsh, Coal and Crested Tits, Redstarts, Nuthatches, Collard and Pied Flycatchers, Tree and House Sparrows
 - Opening: 32mm diameter hole
 External Dimensions: W17 x H26 x D18 cm.
 Internal Diameter: 12 cm.
 Weight: approx. 3.6 kg.
 - Material: Woodcrete
 - Fixing detail: Affixed to large new semi-mature trees in central landscape spaces using adjustable, tree-friendly ties.



HB3: Insect habitat - Bee block
 - Target species: Solitary bees
 - External dimensions:
 - Material: Concrete with granite aggregates
 - Located in quiet corners of planting areas on terraces at levels 4/5
 - Placed directly on to soft landscape and nestled within planting areas.



© JCLA
 Do not scale from this drawing. Any discrepancies or queries should be brought to the attention of the authors. Dimensions are to be verified on site prior to construction.
 To be read in conjunction with all relevant Architects', Services and Structural Engineers' drawings.
 All existing site, tree and building information has been compiled from different sources.
 Refer to current revisions of all referenced files.
Notes:
 - This drawing contains information relevant to discharge planning condition 20 only
 - Refer to other consented drawings where relevant

HB4: Beaurmaris bat box woodcrete
 - Target species: Various bats including Common Pipistrelle, Nathusius's pipistrelle, Soprano pipistrelle and Serotine bats
 - Size: Midi 290 x 400 x 70; 190 x 300 x 20 (Inner)
 - Weight: 8kg
 - Material: Woodcrete
 - Colour: Black
 - Supplied with: Hanging Bracket (width 11cm, height 2.7cm, depth 6.5cm), 2 bracket fixing bolts, 2 washers, 2 raw plugs, 2 coach bolts
 - Fixing detail: Affixed to metal mesh facade using hanging bracket supplied, as per fixing detail for HB1 (sparrow terrace)
 - Placement: Place as high as possible against the façade



Rev	Date	Description
P1	16.03.23	Issued for planning condition discharge
P2	25.04.23	Added bat boxes

JCLA	
Jonathan Cook Landscape Architects Ltd 3A Iliffe Yard LONDON SE17 3QA Tel +44 (0)207 703 3270 www.jcla.co.uk	
Client W.RE	
Project SP108: St Pancras Commercial centre	
Drawing Title Proposed plan: Habitat boxes (Condition 20)	
Drawing Number SP108-100-HB	
Date 25.04.23	Revision P2
Scale (0 A1) 1:200	Drawing Status For information