

Notes

All setting out must be checked on site  
All levels must be checked on site  
All fixings and weatherings must be checked on site  
All dimensions must be checked on site  
This drawing must be read in conjunction with the relevant specification clauses  
This drawing must not be used on site unless issued for construction

2-6 Southampton Row

Space

G.1	Restaurant
G.2	Bar
G.3	Reception
G.4	Customer WC's
G.5	Servery
G.6	Cloaks / Office
G.7	Bedroom
G.8	Bedroom
G.9	Bedroom
G.10	Bedroom
G.11	Refuse Lift
G.12	Goods Lift

Key

	Circulation Areas
	F.O.H.
	B.O.H.
	Bedrooms
	Existing Retained Fabric

H	Planning Issue	05/10/07
G	General amendments	26/09/07
F	Catton Street outdoor seating rearranged	19/09/07
E	Reception and Bar Level Raised	07/09/07
D	General amendments	11/07/07
C	General amendments	08/06/07
B	Scope of structure amended	04/06/07
A	BOH Lift location and room titles amended	29/05/07

Revisions

hd

Harper Downie  
design architecture

Gate House  
No1 St John's Square  
London EC1M 4DH  
T +44(0)2 7490 76 74  
F +44(0)2 7490 49 41  
E studio@harperdownie.com  
www.harperdownie.com

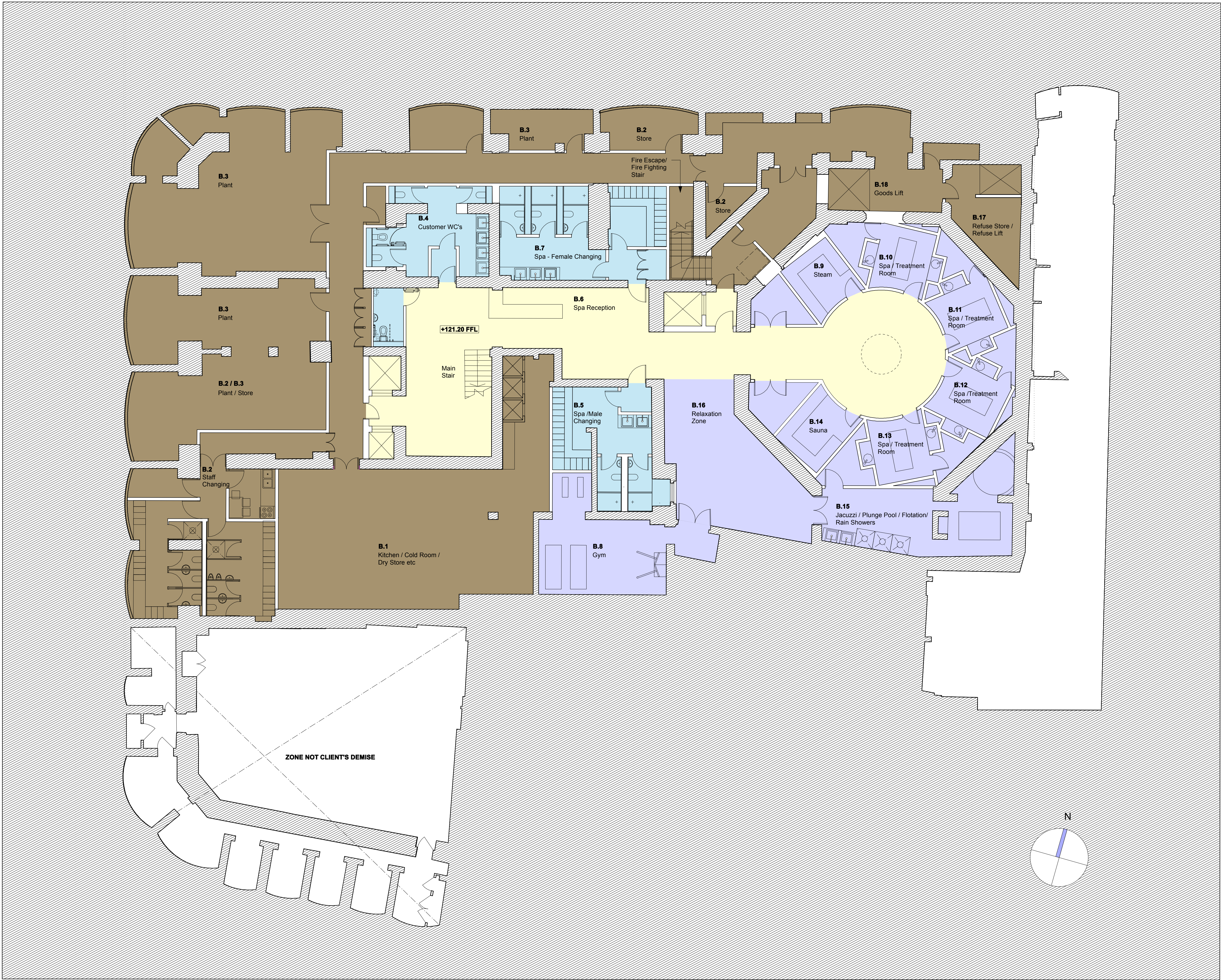
Client	Kingsgate London Properties Ltd
Project	2-6 Southampton Row 118-120 High Holborn

Drawing title Proposed Ground Floor Plan

Scale	A1 - 1:100, A3-1:200	Drwg. No.	467GA00	Rev	H
Date	18/05/07	Status	<input checked="" type="checkbox"/> Information <input type="checkbox"/> Tender <input type="checkbox"/> Construction <input type="checkbox"/> Record		

Do not scale from this drawing. All dimensions are to be checked on site.  
Issued for purposes indicated only. Information contained within this drawing is the sole copyright of  
Harper Downie Ltd. and is not to be reproduced without express permission.





Notes

All setting out must be checked on site  
All levels must be checked on site  
All heights and weatherrings must be checked on site  
All dimensions must be checked on site  
This drawing must not be scaled  
This drawing must be read in conjunction with the relevant specification clauses  
This drawing must not be used on site unless issued for construction

- Space
- B.1 Kitchen / Cold Room / Dry Store etc
  - B.2 Staff Changing / WC's / Shower's / Linen Store
  - B.3 Plant
  - B.4 Customer WC's
  - B.5 Spa - Male Changing / Showers / WC's
  - B.6 Spa Reception
  - B.7 Spa - Female Changing / Showers / WC's
  - B.8 Gym
  - B.9 Steam
  - B.10 Spa - Treatment Room
  - B.11 Spa - Treatment Room
  - B.12 Spa - Treatment Room
  - B.13 Spa - Treatment Room
  - B.14 Sauna
  - B.15 Jacuzzi / Plunge Pool / Floation / Rain Showers
  - B.16 Relaxation Zone
  - B.17 Refuse Store / Refuse Lift
  - B.18 Goods Lift

- Key
- Circulation Areas
  - F.O.H.
  - B.O.H
  - Leisure Areas
  - Existing Retained Fabric

F	Planning Issue	05/10/07
E	General amendments	25/09/07
D	General amendments	11/07/07
C	General amendments	08/06/07
B	Scope of structure amended	04/06/07
A	BOH Lift location amended	29/05/07

Revisions

**hd**  
Harper Downie  
design architecture

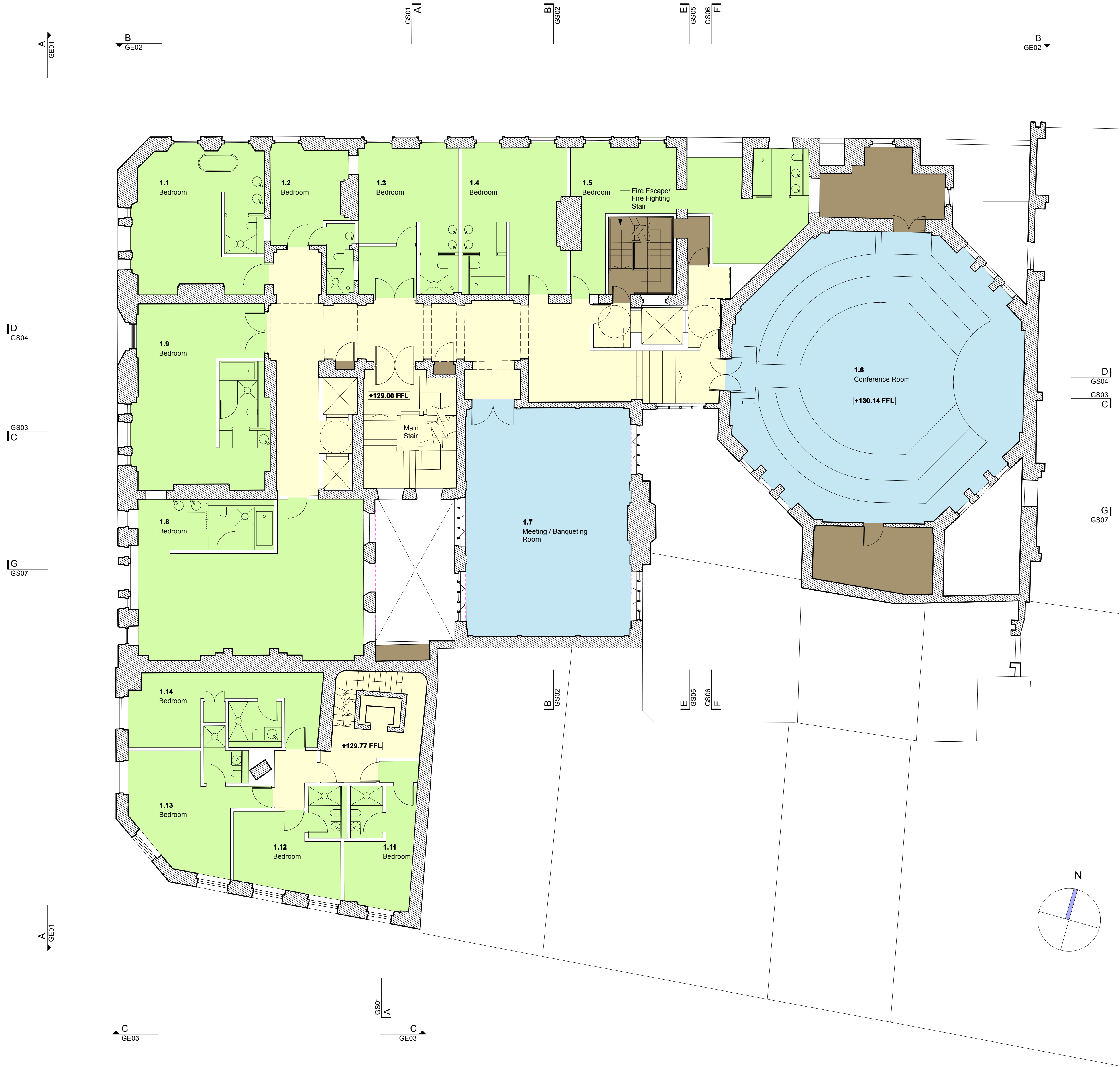
Gate House  
No1 St John's Square  
London EC1M 4DH  
T +44(0)20 7496 76 74  
F +44(0)20 7496 49 41  
E studio@harperdownie.com  
www.harperdownie.com

Client Kingsgate London Properties Ltd

Project 2-6 Southampton Row  
118-120 High Holborn

Drawing title Proposed Basement Floor Plan





Notes

All setting out must be checked on site  
All levels must be checked on site  
All fixings and weathervings must be checked on site  
All dimensions must be checked on site  
This drawing must not be scaled  
This drawing must be read in conjunction with the relevant specification clauses  
This drawing must not be used on site unless issued for construction

2-6 Southampton Row

Space

- 1.1 Bedroom
- 1.2 Bedroom
- 1.3 Bedroom
- 1.4 Bedroom
- 1.5 Bedroom
- 1.6 Conference Room
- 1.7 Meeting / Banqueting Room
- 1.8 Bedroom
- 1.9 Bedroom

119-120 High Holborn

Space

- 1.11 Bedroom
- 1.12 Bedroom
- 1.13 Bedroom
- 1.14 Bedroom

- Key
- Circulation Areas
  - F.O.H.
  - B.O.H.
  - Bedrooms
  - Existing Retained Fabric

D	Planning issue	05/10/07
C	General amendments	26/09/07
B	General amendments	11/07/07
A	General amendments	08/06/07

Revisions

hd

Harper\_Downie

design architecture

Gate House

No1 St John's Square

London EC1M 4DH

T +44(0)2 7490 76 74

F +44(0)2 7490 49 41

E studio@harperdownie.com

www.harperdownie.com

Client Kingsgate London Properties Ltd

Project 2-6 Southampton Row  
118-120 High Holborn

Drawing title Proposed First Floor Plan

Scale A1 - 1:100, A3-1:200 Drwg. No.

Date 18/05/07 **467GA01**

Status ☒ Information ☐ Tender ☐ Construction ☐ Record

Do not scale from this drawing. All dimensions are to be checked on site.  
Revised for purposes indicated only. Information contained within this drawing is the sole copyright of Harper\_Downie Ltd. and is not to be reproduced without express permission.





Notes

All setting out must be checked on site  
All levels must be checked on site  
All fixings and weathings must be checked on site  
All dimensions must be checked on site  
This drawing must not be scaled  
This drawing must be read in conjunction with the relevant specification clauses  
This drawing must not be used on site unless issued for construction

2-6 Southampton Row

Space

- 2.1 Bedroom
- 2.2 Bedroom
- 2.3 Bedroom
- 2.4 Bedroom
- 2.5 Bedroom
- 2.6 Meeting / Banqueting Room
- 2.7 Bedroom
- 2.8 Bedroom
- 2.9 Bedroom
- 2.10 Bedroom

118-120 High Holborn

Space

- 2.11 Bedroom
- 2.12 Bedroom
- 2.13 Bedroom
- 2.14 Bedroom

- Key
- GS04 Circulation Areas
  - F.O.H.
  - B.O.H.
  - Bedrooms
  - Existing Retained Fabric

D	Planning issue	05/10/07
C	General amendments	26/09/07
B	General amendments	11/07/07
A	General amendments	08/06/07

Revisions

hd

Harper\_Downie

design architecture

Gate House

No1 St John's Square

London EC1M 4DH

T +44(0)2 7490 76 74

F +44(0)2 7490 49 41

E studio@harperdownie.com

www.harperdownie.com

Client Kingsgate London Properties Ltd

Project 2-6 Southampton Row  
118-120 High Holborn

Drawing title Proposed Second Floor Plan

Scale	A1 - 1:1100, A3-1:200	Drwg. No.	467GA02	Rev	
Date	18/05/07	Status	<input checked="" type="checkbox"/> Information <input type="checkbox"/> Tender <input type="checkbox"/> Construction <input type="checkbox"/> Record		

Do not scale from this drawing. All dimensions are to be checked on site.  
Revised for purposes indicated only. Information contained within this drawing is the sole copyright of Harper\_Downie Ltd. and is not to be reproduced without express permission.



Notes

All setting out must be checked on site  
All levels must be checked on site  
All fixings and weatherings must be checked on site  
All dimensions must be checked on site  
This drawing must not be scaled  
This drawing must be read in conjunction with the relevant specification clauses  
This drawing must not be used on site unless issued for construction

2-6 Southampton Row

Space

- 3.1 Bedroom  
3.2 Bedroom  
3.3 Bedroom  
3.4 Bedroom  
3.5 Bedroom  
3.6 Bedroom  
3.7 Bedroom  
3.8 Bedroom  
3.9 Bedroom  
3.11 Bedroom  
3.12 Bedroom

118-120 High Holborn

Space

- 3.13 Bedroom  
3.14 Bedroom  
3.15 Bedroom  
3.16 Bedroom

Key

- Circulation Areas  
B.O.H.  
Bedrooms  
Existing Retained Fabric

D	Planning issue	05/10/07
C	General amendments	26/09/07
B	General amendments	11/07/07
A	General amendments	08/06/07

Revisions

hd  
Harper Downie  
design architecture

Gate House  
No1 St John's Square  
London EC1M 4DH  
T +44(0)20 7496 76 74  
F +44(0)20 7496 49 41  
E studio@harperdownie.com  
www.harperdownie.com

Client	Kingsgate London Properties Ltd
Project	2-6 Southampton Row 118-120 High Holborn
Drawing title	Proposed Third Floor Plan

Scale	A1 - 1:100, A3-1:200	Drwg. No.	Rev
Date	18/05/07	467GA03	D
Status	<input checked="" type="checkbox"/> Information <input type="checkbox"/> Tender <input type="checkbox"/> Construction <input type="checkbox"/> Record		
Do not scale from this drawing. All dimensions are to be checked on site. Issued for approval and construction only. Information contained within this drawing is the sole copyright of Harper Downie Ltd. and is not to be reproduced without express permission.			



Notes

All setting out must be checked on site  
All levels must be checked on site  
All fixings and weatherings must be checked on site  
All dimensions must be checked on site  
This drawing must not be scaled  
This drawing must be read in conjunction with the relevant specification clauses  
This drawing must not be used on site unless issued for construction

2-6 Southampton Row

Space

- 4.1 Bedroom  
4.2 Bedroom  
4.3 Bedroom  
4.4 Bedroom  
4.5 Store  
4.6 Bedroom  
4.7 Bedroom  
4.8 Bedroom  
4.9 Bedroom  
4.11 Bedroom  
4.12 Bedroom

118-120 High Holborn

Space

- 4.13 Bedroom  
4.14 Bedroom  
4.15 Bedroom  
4.16 Bedroom

- Key
- Circulation Areas
- B.O.H.
- Bedrooms
- Existing Retained Fabric

D	Planning issue	05/10/07
C	General amendments	26/09/07
B	General amendments	11/07/07
A	General amendments	08/06/07

Revisions

hd

Harper\_Downie  
design architecture

Gate House  
No1 St John's Square  
London EC1M 4DH  
T +44(0)2 7490 76 74  
F +44(0)2 7490 49 41  
E studio@harperdownie.com  
www.harperdownie.com

Client Kingsgate London Properties Ltd

Project 2-6 Southampton Row  
118-120 High Holborn

Drawing title Proposed Fourth Floor Plan

Scale	A1 - 1:100, A3-1:200	Drwg. No.	Rev
Date	18/05/07	<b>467GA04</b>	<b>D</b>
Status	<input checked="" type="checkbox"/> Information <input type="checkbox"/> Tender <input type="checkbox"/> Construction <input type="checkbox"/> Record		

Do not scale from this drawing. All dimensions are to be checked on site.  
Issued for purposes indicated only. Information contained within this drawing is the sole copyright of Harper\_Downie Ltd, and is not to be reproduced without express permission.





Notes

All setting out must be checked on site  
All levels must be checked on site  
All fixings and weatherings must be checked on site  
All dimensions must be checked on site  
This drawing must not be scaled  
This drawing must be read in conjunction with the relevant specification clauses  
This drawing must not be used on site unless issued for construction

- Space
- 5.1 Bedroom  
5.2 Bedroom  
5.3 Bedroom  
5.4 Store / Cleaner's cupboard  
5.5 Bedroom  
5.6 Bedroom  
5.7 Bedroom  
5.8 Bedroom  
5.9 Bedroom  
5.10 Bedroom

- 118-120 High Holborn
- Space

- 5.11 Bedroom  
5.12 Bedroom  
5.13 Bedroom

- Key
- Circulation Areas  
 B.O.H.  
 Bedrooms  
 Existing Retained Fabric

E	Planning issue	05/10/07
D	General amendments	26/09/07
C	General amendments	11/08/07
B	General amendments	11/07/07
A	General amendments	08/06/07

Revisions

hd

Harper\_Downie  
design architecture

Gate House  
No1 St John's Square  
London EC1M 4DH  
T +44(0)2 7490 76 74  
F +44(0)2 7490 49 41  
E studio@harperdownie.com  
www.harperdownie.com

Client	Kingsgate London Properties Ltd
Project	2-6 Southampton Row 118-120 High Holborn
Drawing title	Proposed Fifth Floor Plan

Scale	A1 - 1:100, A3-1:200	Drwg. No.	467GA05	Rev	E
Date	18/05/07	Status	<input checked="" type="checkbox"/> Information <input type="checkbox"/> Tender <input type="checkbox"/> Construction <input type="checkbox"/> Record		

Do not scale from this drawing. All dimensions are to be checked on site.  
Issued for purposes indicated only. Information contained within this drawing is the sole copyright of Harper\_Downie Ltd, and is not to be reproduced without express permission.



Notes

All setting out must be checked on site  
All levels must be checked on site  
All fixings and weathervings must be checked on site  
All dimensions must be checked on site  
This drawing must not be scaled  
This drawing must be read in conjunction with the relevant specification clauses  
This drawing must not be used on site unless issued for construction

Space

- 6.1 Bedroom  
6.2 Bedroom  
6.3 Bedroom  
6.4 Bedroom  
6.5 Bedroom  
6.6 Bedroom

- Key
- Circulation Areas  
B.O.H.  
Bedrooms  
Existing Retained Fabric

F	Planning Issue	05/10/07
E	General amendments	26/09/07
D	General amendments	11/08/07
C	General amendments	11/07/07
B	General amendments	08/06/07
A	Secondary means of escape added from 7th floor and room layouts amended	29/05/07

Revisions

hd

Harper\_Downie

design architecture

Gate House  
No1 St John's Square  
London EC1M 4DH  
T +44(0)2 7496 76 74  
F +44(0)2 7496 49 41  
E studio@harperdownie.com  
www.harperdownie.com

Client Kingsgate London Properties Ltd

Project 2-6 Southampton Row  
118-120 High Holborn

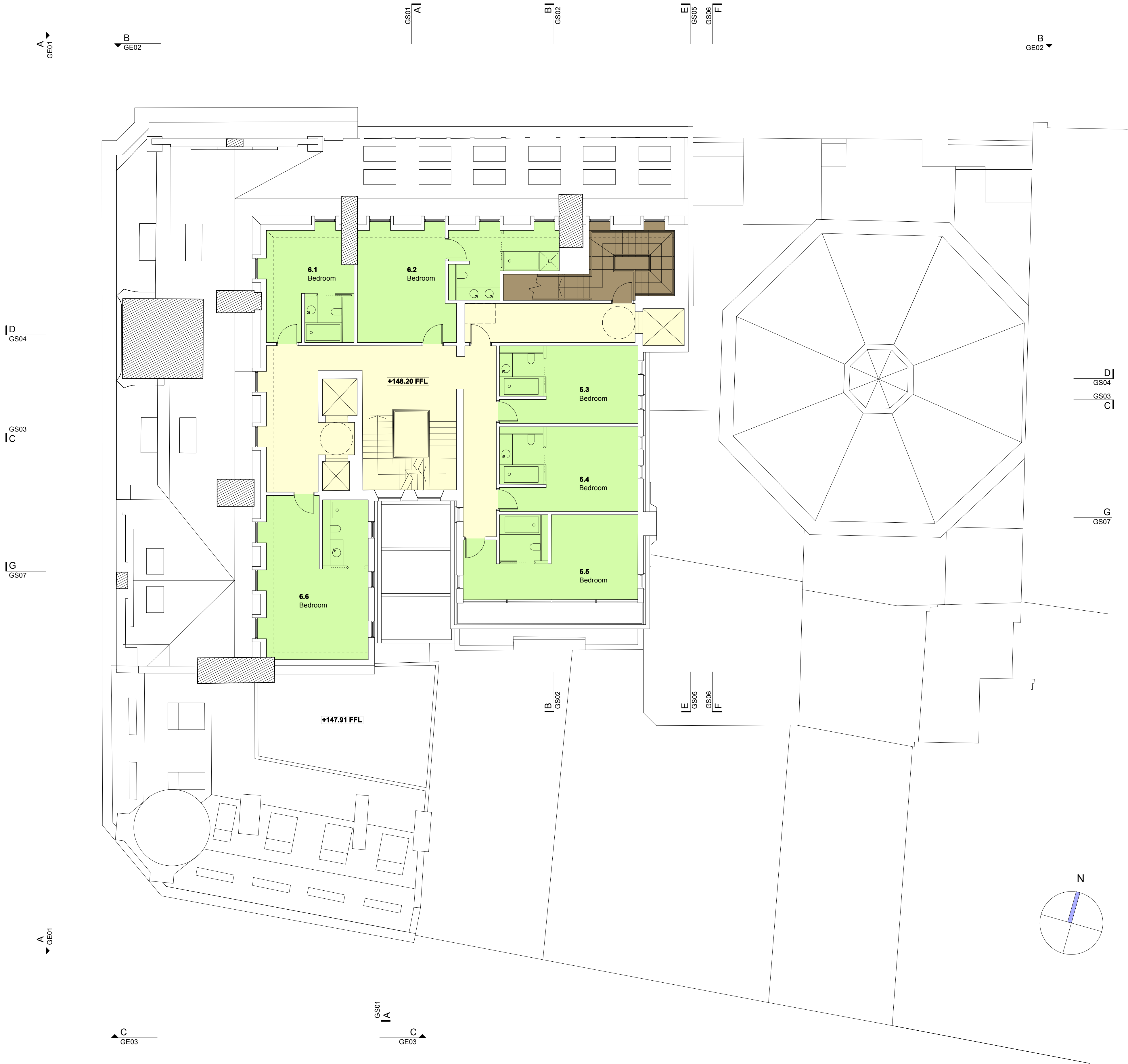
Drawing title Proposed Sixth Floor Plan

Scale A1 - 1:100, A3-1:200 Drwg. No. Rev

Date 18/05/07 467GA06 F

Status ☒ Information ☐ Tender ☐ Construction ☐ Record

Do not scale from this drawing. All dimensions are to be checked on site.  
Issued for approval and construction only. Information contained within this drawing is the sole copyright of Harper\_Downie Ltd. and is not to be reproduced without express permission.

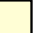







Notes

All setting out must be checked on site  
All levels must be checked on site  
All fixings and weatherings must be checked on site  
All dimensions must be checked on site  
This drawing must not be scaled  
This drawing must be read in conjunction with the relevant specification clauses  
This drawing must not be used on site unless issued for construction

Space	
7.1	Bedroom
7.2	Bedroom
7.3	Bedroom
7.4	Bedroom

Key	
	Circulation Areas
	B.O.H.
	Bedrooms
	Existing Retained Fabric

G	Planning Issue	05/10/07
F	General amendments	26/09/07
E	Lift access removed, Room 7.1 amended	03/09/07
D	General amendments	11/08/07
C	General amendments	11/07/07
B	General amendments	08/06/07
A	Secondary means of escape added from 7th floor and room layouts amended	29/05/07

Revisions

hd

Harper\_Downie  
design architecture

Gate House  
No1 St John's Square  
London EC1M 4DH  
T +44(0)2 7496 76 74  
F +44(0)2 7496 49 41  
E studio@harperdownie.com  
www.harperdownie.com

Client	Kingsgate London Properties Ltd
Project	2-6 Southampton Row 118-120 High Holborn
Drawing title	Proposed Seventh Floor Plan

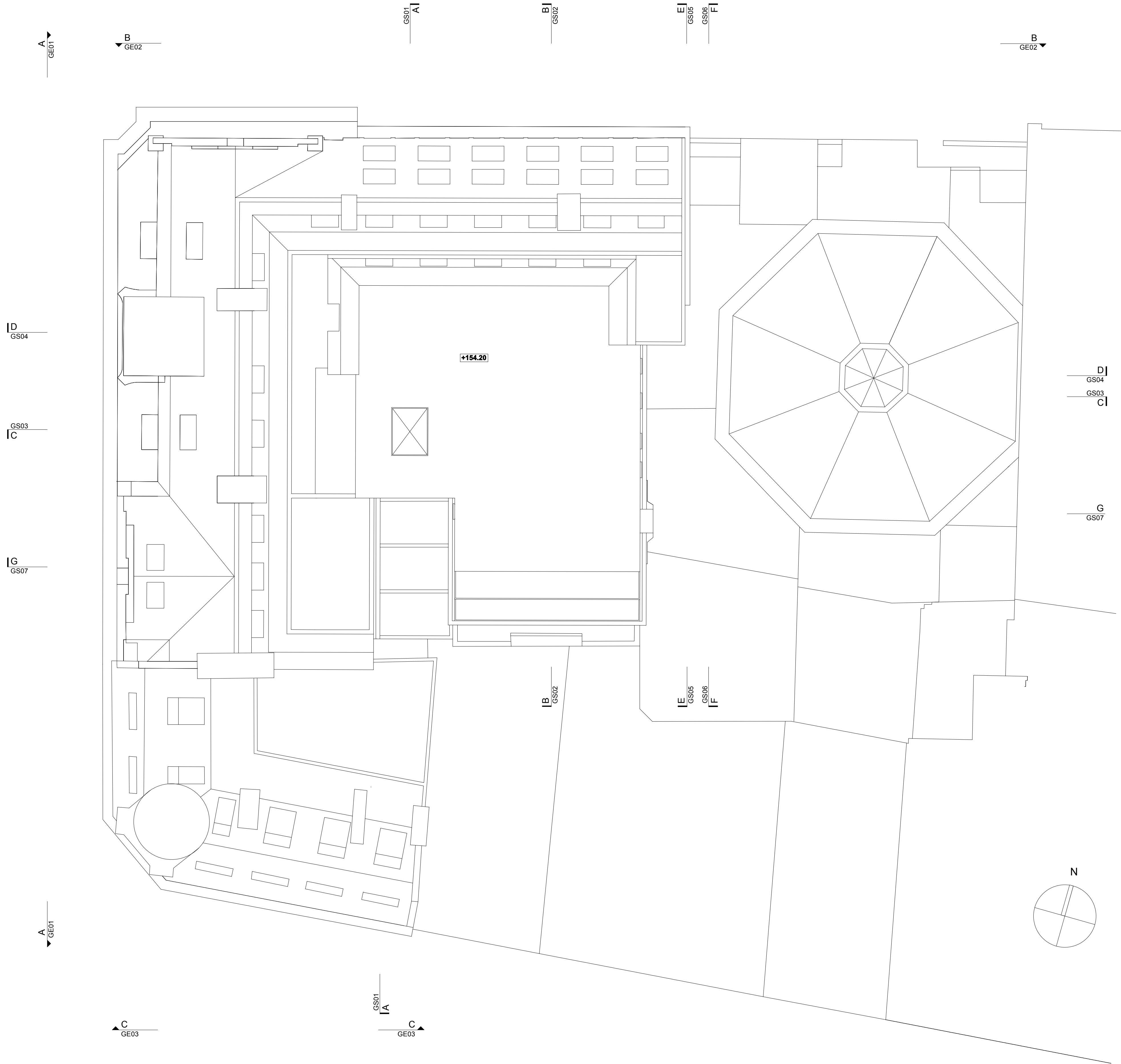
Scale	A1 - 1:100, A3-1:200	Drwg. No.	Rev
Date	18/05/07	<b>467GA07</b>	<b>G</b>
Status	<input checked="" type="checkbox"/> Information <input type="checkbox"/> Tender <input type="checkbox"/> Construction <input type="checkbox"/> Record		
Do not scale from this drawing. All dimensions are to be checked on site. Issued for purposes indicated only. Information contained within this drawing is the sole copyright of Harper_Downie Ltd. and is not to be reproduced without express permission.			





Notes

All setting out must be checked on site  
All levels must be checked on site  
All fixings and weatherings must be checked on site  
All dimensions must be checked on site  
This drawing must not be scaled  
This drawing must be read in conjunction with the relevant specification clauses  
This drawing must not be used on site unless issued for construction



A Planning Issue 05/10/07

Revisions

**hd**  
Harper Downie  
design architecture

Gate House  
No1 St John's Square  
London EC1M 4DH  
T +44(0)20 7496 76 74  
F +44(0)20 7496 49 41  
E studio@harperdownie.com  
www.harperdownie.com

Client Kingsgate London Properties Ltd

Project 2-6 Southampton Row  
118-120 High Holborn

Drawing title Proposed Roof Plan

Scale A1 - 1:100, A3-1:200 Drwg. No. Rev

Date 18/05/07 **467GA08** **A**

Status ☒ Information ☐ Tender ☐ Construction ☐ Record

Do not scale from this drawing. All dimensions are to be checked on site.  
Issued for approval and construction only. Information contained within this drawing is the sole copyright of Harper Downie Ltd. and is not to be reproduced without express permission.



Notes

All setting out must be checked on site  
All levels must be checked on site  
All fixings and weathersings must be checked on site  
All dimensions must be checked on site  
This drawing must not be scaled  
This drawing must be read in conjunction with the relevant specification clauses  
This drawing must not be used on site unless issued for construction

- Key
- Circulation Areas
  - F.O.H.
  - B.O.H
  - Existing Retained Fabric

D	Planning issue	05/10/07
C	General amendments	13/06/07
B	General amendments	08/06/07
A	BOH Lift location and room titles amended	29/05/07

Revisions

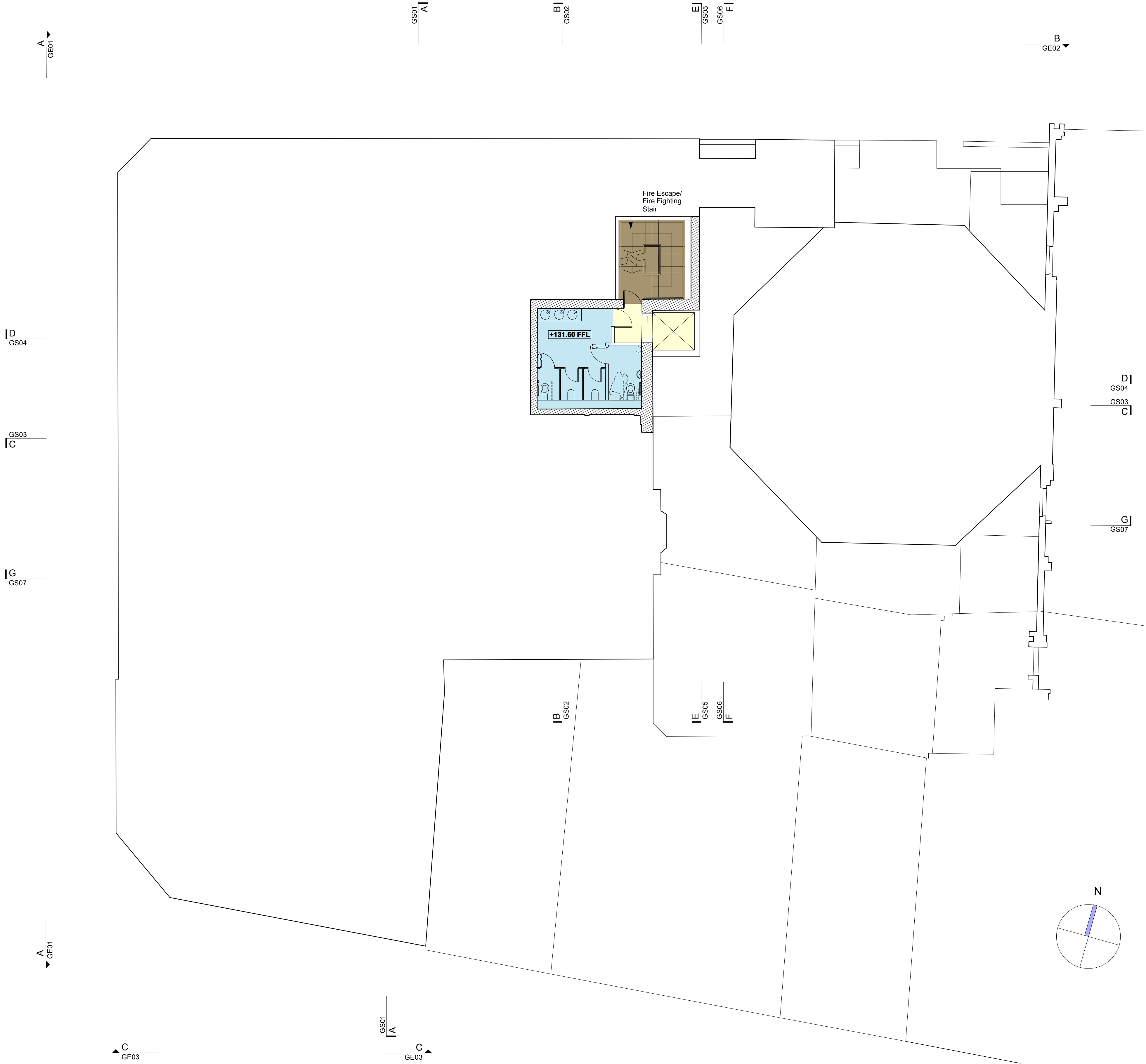
hd

Harper\_Downie  
design architecture

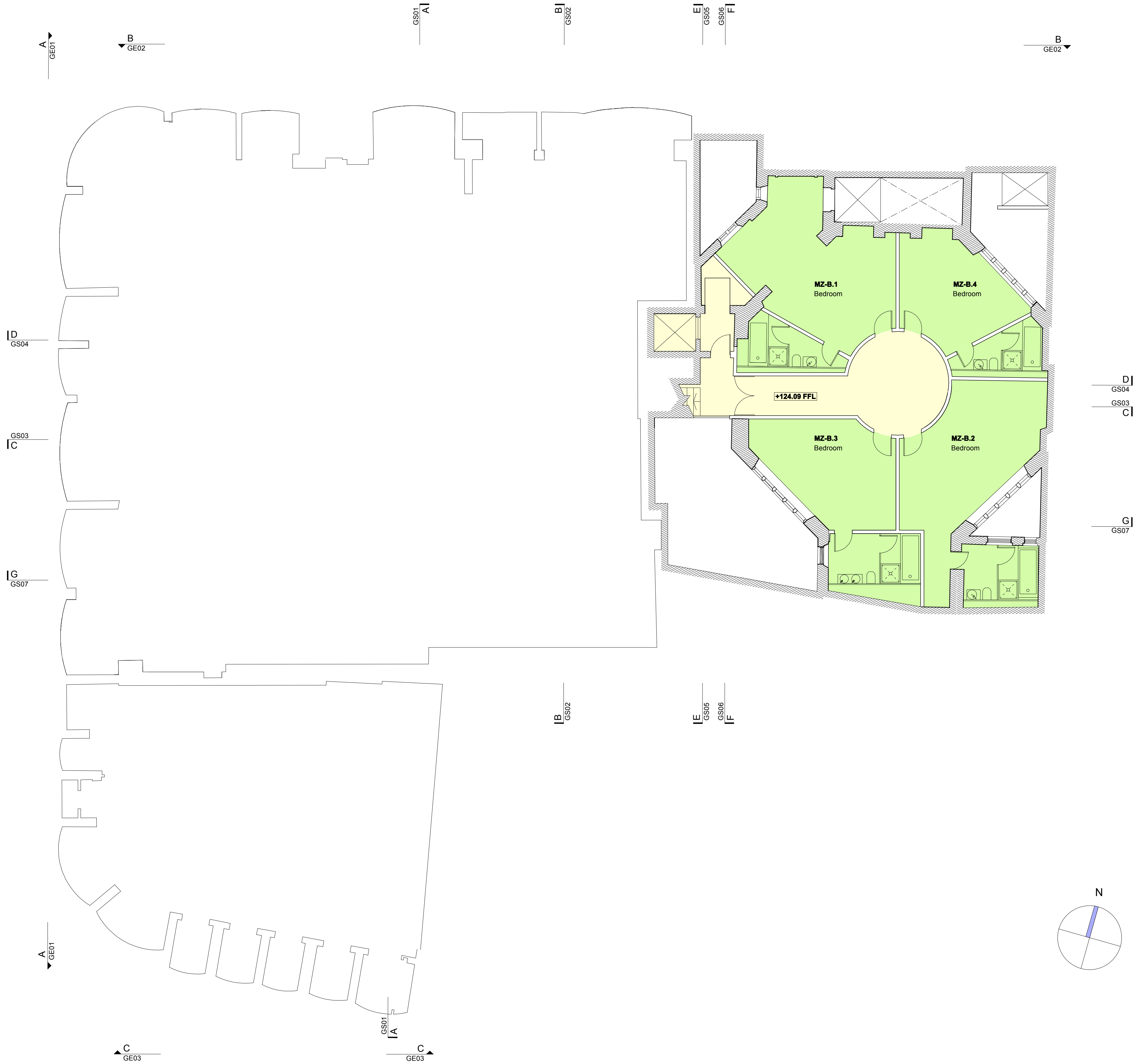
Gate House  
No1 St John's Square  
London EC1M 4DH  
T +44(0)2 7490 76 74  
F +44(0)2 7490 49 41  
E studio@harperdownie.com  
www.harperdownie.com

Client	Kingsgate London Properties Ltd
Project	2-6 Southampton Row 118-120 High Holborn
Drawing title	Proposed First Floor MezzaninePlan

Scale	A1 - 1:100, A3-1:200	Drwg. No.		Rev	
Date	13/06/07		<b>467GAM1</b>		<b>D</b>
Status	<input checked="" type="checkbox"/> Information <input type="checkbox"/> Tender <input type="checkbox"/> Construction <input type="checkbox"/> Record				
Do not scale from this drawing. All dimensions are to be checked on site. Issued for purposes indicated only. Information contained within this drawing is the sole copyright of Harper, Downie Ltd. and is not to be reproduced without express permission.					







Notes

All setting out must be checked on site  
All levels must be checked on site  
All fixings and weatherings must be checked on site  
All dimensions must be checked on site  
This drawing must not be scaled  
This drawing must be read in conjunction with the relevant specification clauses  
This drawing must not be used on site unless issued for construction

2-6 Southampton Row

Space	
MZ-B.1	Bedroom
MZ-B.2	Bedroom
MZ-B.3	Bedroom
MZ-B.4	Bedroom

Key	
	Circulation Areas
	Bedrooms
	Existing Retained Fabric

E	Planning issue	05/10/07
D	General amendments	26/09/07
C	General amendments	13/06/07
B	General amendments	08/06/07
A	BOH Lift location and room titles amended	29/05/07

Revisions

hd

Harper\_Downie  
design architecture

Gate House  
No1 St John's Square  
London EC1M 4DH  
T +44(0)2 7490 76 74  
F +44(0)2 7490 49 41  
E studio@harperdownie.com  
www.harperdownie.com

Client Kingsgate London Properties Ltd

Project 2-6 Southampton Row  
118-120 High Holborn

Drawing title Proposed Basement Mezzanine Floor Plan

Scale	A1 - 1:100, A3-1:200	Drwg. No.		Rev	
Date	13/06/07		<b>467GAMB</b>	<input checked="" type="checkbox"/>	E
Status	<input checked="" type="checkbox"/> Information	<input type="checkbox"/> Tender	<input type="checkbox"/> Construction	<input type="checkbox"/> Record	

Do not scale from this drawing. All dimensions are to be checked on site.  
Revised for purposes indicated only. Information contained within this drawing is the sole copyright of Harper\_Downie Ltd and is not to be reproduced without express permission.