

NOTES:

COPYRIGHT RESERVED BY BAMFORD-MUMBY LTD T/A
AB ASSOCIATES.
DO NOT SCALE THIS DRAWING.
DO NOT USE THIS DRAWING FOR ANY PURPOSE OTHER
THAN DEFINED BY THE DRAWING STATUS
CONTRACTOR TO CHECK ALL DIMENSIONS ON SITE PRIOR
TO COMMENCEMENT OF WORKS. ANY DISCREPANCIES TO
BE RAISED WITH THE ABA IMMEDIATELY.

LEGEND:

— AREA TO BE LICENSED

▼ CO2 Extinguisher

▼ Foam Extinguisher

▼ Water Extinguisher

W/ Wet Chemical

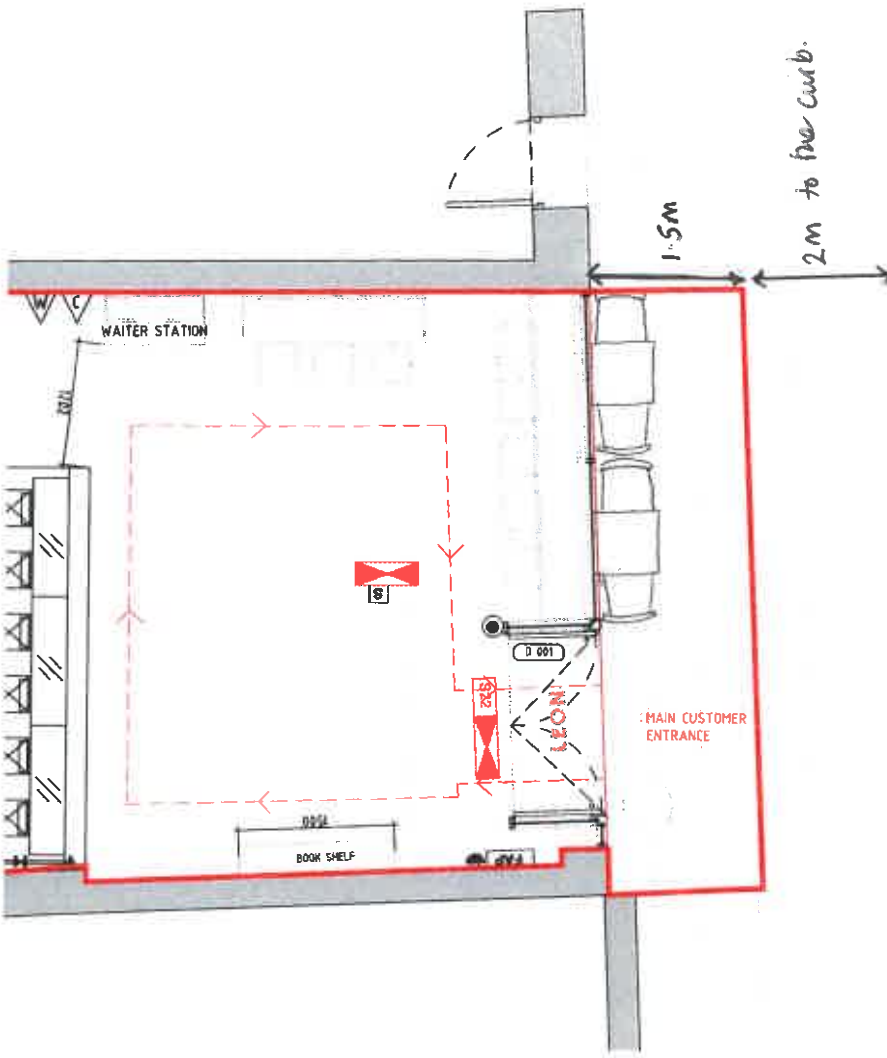
▼ Fire Blanket

1/2 HR FR SC 1/2 Hour fire resistant self
closing door with smoke
seals and intumescent strips

PB Fire exit doors fitted with
emergency push bar facility

S13 Sign - Fire door keep shut

POINT OF CUSTOMER ACCESS



FIRE ALARM

A Fire Alarm system will be installed to BS5839
Part 1 2013 Code of practice for system design,
installation, commissioning and maintenance,
comprising of devices as indicated.

FAP	FIRE ALARM PANEL
MH	MAGNETIC DOOR HOLDER
●	MANUAL CALL POINT
K	HEAT DETECTOR
S	SMOKE DETECTOR
I	INDICATOR FOR VOID DETECTOR
V	VOID DETECTOR
☂	SOUNDER
⊗	SOUNDER BEACON
—	INTERFAC H = HVAC