

ACCESS CONTROL LEGEND:

- DAC** NEW DOOR ACCESS CONTROLLER - NOTE THESE ARE NOTE INDICATED ON THE DRAWING AT STAGE 3. THE SPECIALIST SECURITY CONTRACTOR SHALL DETERMINE THE QUANTITY OF CONTROLLERS REQUIRED TO SUIT THE GENETEC SYSTEM. LOCATION OF CONTROLLERS TO BE AGREED. SECURITY CONTRACTOR TO INCLUDE FOR ALL NECESSARY FIRE ALARM INTERFACES TO ENSURE ALL DOORS RELEASE ON FIRE SIGNAL.
- EDR** NEW GREEN SEMI-FLUSH BREAKGLASS TO ALLOW EMERGENCY USE OF DOOR ON SYSTEM FAILURE
- PR** NEW CARD ACCESS READER (PROXIMITY) WITH BLE COMPATIBILITY
- M** ELECTRO MAGNETIC SOLENOID LOCK. EXACT TYPE TO BE SPECIFIED BY ARCHITECT AND INSTALLED BY DOOR IRONMONGERY CONTRACTOR.
- K** ELECTRO MAGNETIC STRIKE "KEEPER LOCK WITH FREE LATCHING EGRESS. TO BE SPECIFIED BY ARCHITECT AND INSTALLED BY DOOR IRONMONGERY CONTRACTOR.
- ENT CP** ENTRYPHONE CALL PANEL.

CCTV SYSTEM LEGEND:

- F** FIXED CCTV CAMERA DOME. EXISTING CAMERAS ARE TO BE REPLACED WITH NEW 1080P IP CAMERAS IN EXISTING LOCATIONS.

- CCTV** CCTV MONITOR/KEYBOARD & JOYSTICK
- CCTV MP** CCTV MULTIPLEXOR
- CCTV DR** CCTV DIGITAL RECORDER

DISABLED ALARM LEGEND:

- R** DISABLED RESET UNIT
- DIS** DISABLED CALL INDICATOR/BUZZER
- DIS** DISABLED PULL CORD/INDICATOR
- DCSRP** DISABLED CALL SYSTEM REMOTE INDICATOR PANEL

EXISTING CORE AREAS ARE GENERALLY OUTWITH THE REFURBISHMENT SCOPE/WORKS AREAS. SECURITY SYSTEMS SPECIALIST CONTRACTOR SHALL EXTEND EXISTING SYSTEM NETWORK CABLING AS REQUIRED. CABLE ROUTES TO TAKE COGNISANCE OF HERITAGE FINISHES ETC.

ACCESS CONTROL AND CCTV EQUIPMENT WILL GENERALLY BE SURFACE FIXED TO WALLS/SOFFITS IN EXPOSED SERVICES AREAS AND ON CEILINGS WHERE SUSPENDED CEILINGS.

ALL CABLING WILL BE INSTALLED ON TRAY CONTAINMENT ON PRIMARY ROUTES AND IN CONDUIT TO FINAL EQUIPMENT LOCATIONS. CABLE ROUTES SHALL BE CONCEALED WHEREVER POSSIBLE.

S4 - P02	20/02/2023	LBC ISSUE	KR	SH
S4 - P02	28/10/2022	TENDER ISSUE	KR	SH
S2 - P01	30/09/2022	INFORMATION ISSUE	KR	SH
SUIT-REV	DATE	DESCRIPTION	DRN	CHK
STATUS				

FOR INFORMATION

THIS DRAWING IS COPYRIGHT. DO NOT SCALE FROM DRAWING. THE CONTRACTOR AND THEIR SUB-CONTRACTORS ARE TO VERIFY ALL DIMENSIONS ON SITE BEFORE MAKING SHOP DRAWINGS OR COMMENCING MANUFACTURE.

KJ TAIT
ENGINEERS

1 Fitzroy Square
London W1T 5HF
T +44 (0) 207 588 0952
E london@kjtait.com
W www.kjtait.com

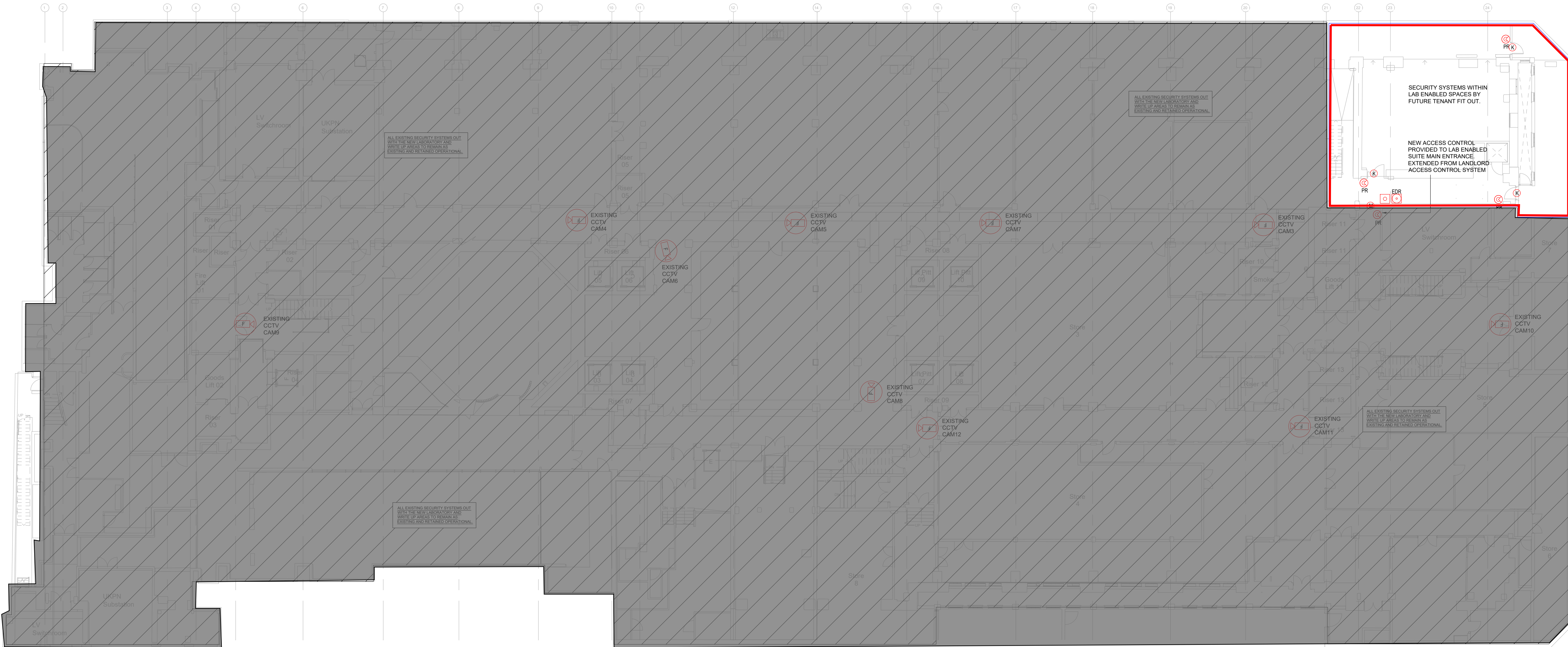
PROJECT INFORMATION

CLIENT OXFORD VICTORIA HOUSE
PROJECT DEVELOPMENT LTD
LONDON, WC1B 4DA

DRAWING INFORMATION

DRAWING TITLE ELECTRICAL SERVICES
BASEMENT LEVEL 1
SECURITY LAYOUT

DESIGNED BY	KR	DATE	SEPT. 2022
DRAWN BY	MZ	KJT JOB No.	
SCALE	1:150 @ A1	L3221	
JOB CODE	L3221	ORIGIN-VOL-LEVEL-TYPE-ROLE-CLASS NUMBER	SUIT-REV
	KJT-ZZ-B1-DR-E-6701		S4-P02



ACCESS CONTROL LEGEND:

- DAC** NEW DOOR ACCESS CONTROLLER - NOTE THESE ARE NOTE INDICATED ON THE DRAWING AT STAGE 3. THE SPECIALIST SECURITY CONTRACTOR SHALL DETERMINE THE QUANTITY OF CONTROLLERS REQUIRED TO SUIT THE GENETEC SYSTEM. LOCATION OF CONTROLLERS TO BE AGREED. SECURITY CONTRACTOR TO INCLUDE FOR ALL NECESSARY FIRE ALARM INTERFACES TO ENSURE ALL DOORS RELEASE ON FIRE SIGNAL.
- EDR** NEW GREEN SEMI-FLUSH BREAKGLASS TO ALLOW EMERGENCY USE OF DOOR ON SYSTEM FAILURE
- PR** NEW CARD ACCESS READER (PROXIMITY) WITH BLE COMPATIBILITY
- M** ELECTRO MAGNETIC SOLENOID LOCK. EXACT TYPE TO BE SPECIFIED BY ARCHITECT AND INSTALLED BY DOOR IRONMONGERY CONTRACTOR.
- K** ELECTRO MAGNETIC STRIKE "KEEPER LOCK WITH FREE LATCHING EGRESS. TO BE SPECIFIED BY ARCHITECT AND INSTALLED BY DOOR IRONMONGERY CONTRACTOR.
- ENT CP** ENTRYPHONE CALL PANEL.

CCTV SYSTEM LEGEND:

- F.K** FIXED CCTV CAMERA DOME. EXISTING CAMERAS ARE TO BE REPLACED WITH NEW 1080P IP CAMERAS IN EXISTING LOCATIONS.

- CCTV** CCTV MONITOR/KEYBOARD & JOYSTICK
- CCTV MP** CCTV MULTIPLEXOR
- CCTV DR** CCTV DIGITAL RECORDER

DISABLED ALARM LEGEND:

- R** DISABLED RESET UNIT
- DIS** DISABLED CALL INDICATOR/BUZZER
- DIS** DISABLED PULL CORD/INDICATOR
- DCSRP** DISABLED CALL SYSTEM REMOTE INDICATOR PANEL

EXISTING CORE AREAS ARE GENERALLY OUTWITH THE REFURBISHMENT SCOPE/WORKS AREAS. SECURITY SYSTEMS SPECIALIST CONTRACTOR SHALL EXTEND EXISTING SYSTEM NETWORK CABLING AS REQUIRED. CABLE ROUTES TO TAKE COGNISANCE OF HERITAGE FINISHES ETC.

ACCESS CONTROL AND CCTV EQUIPMENT WILL GENERALLY BE SURFACE FIXED TO WALLS/SOFFITS IN EXPOSED SERVICES AREAS AND ON CEILINGS WHERE SUSPENDED CEILINGS.

ALL CABLING WILL BE INSTALLED ON TRAY CONTAINMENT ON PRIMARY ROUTES AND IN CONDUIT TO FINAL EQUIPMENT LOCATIONS. CABLE ROUTES SHALL BE CONCEALED WHEREVER POSSIBLE.

S4 - P02	20/02/2023	LBC ISSUE	KR	SH
S4 - P02	28/10/2022	TENDER ISSUE	KR	SH
S2 - P01	30/09/2022	INFORMATION ISSUE	KR	SH
SUIT-REV	DATE	DESCRIPTION	DRN	CHK
STATUS				

FOR INFORMATION

THIS DRAWING IS COPYRIGHT. DO NOT SCALE FROM DRAWING. THE CONTRACTOR AND THEIR SUB-CONTRACTORS ARE TO VERIFY ALL DIMENSIONS ON SITE BEFORE MAKING SHOP DRAWINGS OR COMMENCING MANUFACTURE.

KJ TAIT
ENGINEERS
1 Fitzroy Square
London W1T 5HF
T: +44 (0) 207 588 0952
E: london@kjtait.com
W: www.kjtait.com

PROJECT INFORMATION			
CLIENT	OXFORD VICTORIA HOUSE		
PROJECT	DEVELOPMENT LTD LONDON, WC1B 4DA		
DRAWING INFORMATION			
DRAWING TITLE	ELECTRICAL SERVICES BASEMENT LEVEL 2 SECURITY LAYOUT		
DESIGNED BY	KR	DATE	SEPT. 2022
DRAWN BY	MZ	K/JT JOB No.	
SCALE	1:150 @ A1		L3221
JOB CODE	ORIGIN-VOL-LEVEL-TYPE-ROLE-CLASS NUMBER	SUIT-REV	
L3221	KJT-ZZ-B2-DR-E-6701	S4-P02	



ACCESS CONTROL LEGEND:

- DAC** NEW DOOR ACCESS CONTROLLER - NOTE THESE ARE NOTE INDICATED ON THE DRAWING AT STAGE 3. THE SPECIALIST SECURITY CONTRACTOR SHALL DETERMINE THE QUANTITY OF CONTROLLERS REQUIRED TO SUIT THE GENETEC SYSTEM. LOCATION OF CONTROLLERS TO BE AGREED. SECURITY CONTRACTOR TO INCLUDE FOR ALL NECESSARY FIRE ALARM INTERFACES TO ENSURE ALL DOORS RELEASE ON FIRE SIGNAL.
- EDR** NEW GREEN SEMI-FLUSH BREAKGLASS TO ALLOW EMERGENCY USE OF DOOR ON SYSTEM FAILURE
- PR** NEW CARD ACCESS READER (PROXIMITY) WITH BLE COMPATIBILITY
- M** ELECTRO MAGNETIC SOLENOID LOCK. EXACT TYPE TO BE SPECIFIED BY ARCHITECT AND INSTALLED BY DOOR IRONMONGERY CONTRACTOR.
- K** ELECTRO MAGNETIC STRIKE "KEEPER LOCK WITH FREE LATCHING EGRESS. TO BE SPECIFIED BY ARCHITECT AND INSTALLED BY DOOR IRONMONGERY CONTRACTOR.
- ENT CP** ENTRYPHONE CALL PANEL.

CCTV SYSTEM LEGEND:

- F** FIXED CCTV CAMERA DOME. EXISTING CAMERAS ARE TO BE REPLACED WITH NEW 1080P IP CAMERAS IN EXISTING LOCATIONS.

- CCTV** CCTV MONITOR/KEYBOARD & JOYSTICK
- CCTV MP** CCTV MULTIPLEXOR
- CCTV DR** CCTV DIGITAL RECORDER

DISABLED ALARM LEGEND:

- R** DISABLED RESET UNIT
- DIS** DISABLED CALL INDICATOR/BUZZER
- DIS** DISABLED PULL CORD/INDICATOR
- DCSRP** DISABLED CALL SYSTEM REMOTE INDICATOR PANEL

EXISTING CORE AREAS ARE GENERALLY OUTWITH THE REFURBISHMENT SCOPE/WORKS AREAS. SECURITY SYSTEMS SPECIALIST CONTRACTOR SHALL EXTEND EXISTING SYSTEM NETWORK CABLING AS REQUIRED. CABLE ROUTES TO TAKE COGNISANCE OF HERITAGE FINISHES ETC.

ACCESS CONTROL AND CCTV EQUIPMENT WILL GENERALLY BE SURFACE FIXED TO WALLS/SOFFITS IN EXPOSED SERVICES AREAS AND ON CEILINGS WHERE SUSPENDED CEILINGS.

ALL CABLING WILL BE INSTALLED ON TRAY CONTAINMENT ON PRIMARY ROUTES AND IN CONDUIT TO FINAL EQUIPMENT LOCATIONS. CABLE ROUTES SHALL BE CONCEALED WHEREVER POSSIBLE.

S4 - P02	20/02/2023	LBC ISSUE	KR	SH
S4 - P02	28/10/2022	TENDER ISSUE	KR	SH
S2 - P01	30/09/2022	INFORMATION ISSUE	KR	SH
SUIT-REV	DATE	DESCRIPTION	DRN	CHK
STATUS				

FOR INFORMATION

THIS DRAWING IS COPYRIGHT. DO NOT SCALE FROM DRAWING. THE CONTRACTOR AND THEIR SUB-CONTRACTORS ARE TO VERIFY ALL DIMENSIONS ON SITE BEFORE MAKING SHOP DRAWINGS OR COMMENCING MANUFACTURE.

KJ TAIT
ENGINEERS

1 Fitzroy Square
London W1T 5HF
T +44 (0) 207 588 0952
E london@kjta.it.com
W www.kjta.it.com

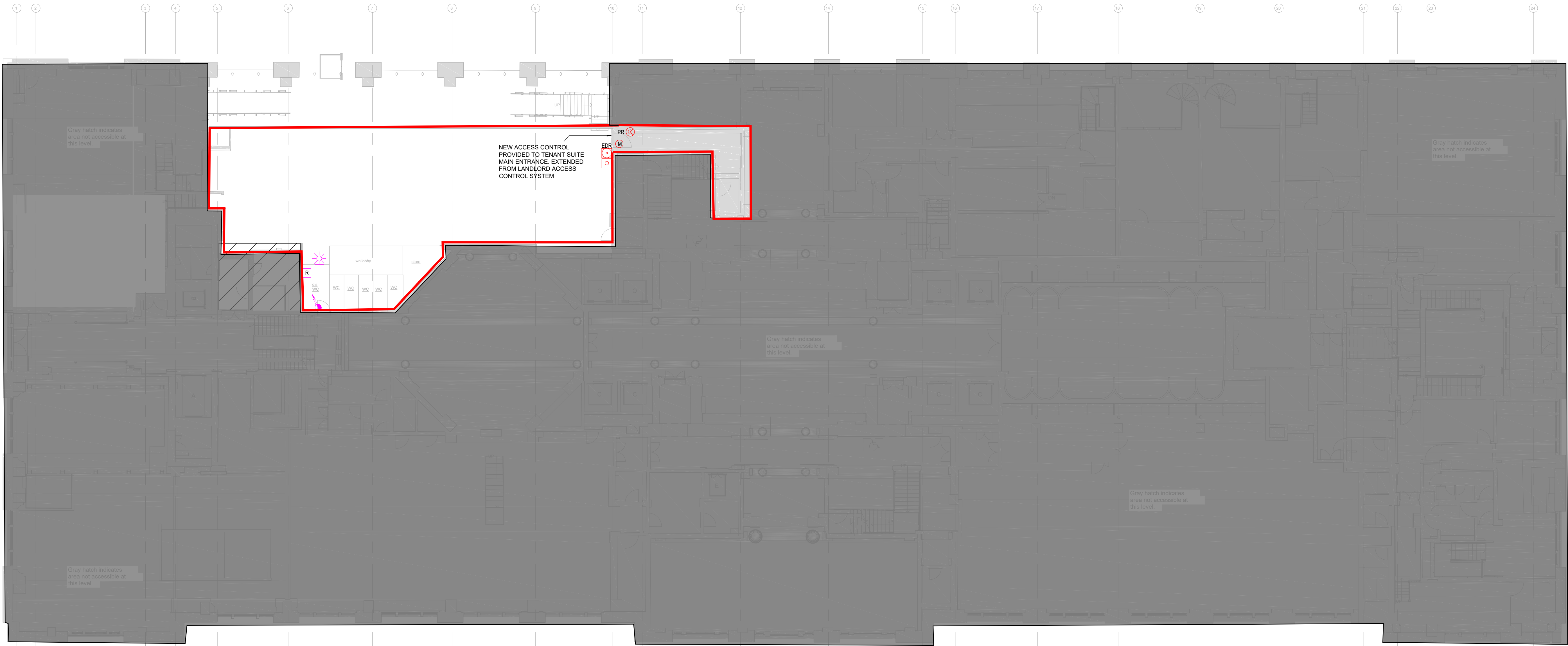
PROJECT INFORMATION

CLIENT OXFORD VICTORIA HOUSE
PROJECT DEVELOPMENT LTD
LONDON, WC1B 4DA

DRAWING INFORMATION

DRAWING TITLE ELECTRICAL SERVICES
LOWER GROUND FLOOR
SECURITY LAYOUT

DESIGNED BY	KR	DATE	SEPT. 2022
DRAWN BY	MZ	KJT JOB No.	
SCALE	1:150 @ A1	L3221	
JOB CODE	L3221	ORIGIN-VOL-LEVEL-TYPE-ROLE-CLASS NUMBER	SUIT-REV
	KJT-ZZ-LG-DR-E-6701		S4-P02



ACCESS CONTROL LEGEND:

- DAC** NEW DOOR ACCESS CONTROLLER - NOTE THESE ARE NOTE INDICATED ON THE DRAWING AT STAGE 3. THE SPECIALIST SECURITY CONTRACTOR SHALL DETERMINE THE QUANTITY OF CONTROLLERS REQUIRED TO SUIT THE GENETEC SYSTEM. LOCATION OF CONTROLLERS TO BE AGREED. SECURITY CONTRACTOR TO INCLUDE FOR ALL NECESSARY FIRE ALARM INTERFACES TO ENSURE ALL DOORS RELEASE ON FIRE SIGNAL.
- EDR** NEW GREEN SEMI-FLUSH BREAKGLASS TO ALLOW EMERGENCY USE OF DOOR ON SYSTEM FAILURE
- PR** NEW CARD ACCESS READER (PROXIMITY) WITH BLE COMPATIBILITY
- M** ELECTRO MAGNETIC SOLENOID LOCK. EXACT TYPE TO BE SPECIFIED BY ARCHITECT AND INSTALLED BY DOOR IRONMONGERY CONTRACTOR.
- K** ELECTRO MAGNETIC STRIKE "KEEPER LOCK WITH FREE LATCHING EGRESS. TO BE SPECIFIED BY ARCHITECT AND INSTALLED BY DOOR IRONMONGERY CONTRACTOR.
- ENT CP** ENTRYPHONE CALL PANEL.

CCTV SYSTEM LEGEND:

- FIXED** FIXED CCTV CAMERA DOME. EXISTING CAMERAS ARE TO BE REPLACED WITH NEW 1080P IP CAMERAS IN EXISTING LOCATIONS.
- CCTV** CCTV MONITOR/KEYBOARD & JOYSTICK
- CCTV MP** CCTV MULTIPLEXOR
- CCTV DR** CCTV DIGITAL RECORDER

DISABLED ALARM LEGEND:

- R** DISABLED RESET UNIT
- BELL** DISABLED CALL INDICATOR/BUZZER
- PULL** DISABLED PULL CORD/INDICATOR
- DCSRP** DISABLED CALL SYSTEM REMOTE INDICATOR PANEL

EXISTING CORE AREAS ARE GENERALLY OUTWITH THE REFURBISHMENT SCOPE/WORKS AREAS. SECURITY SYSTEMS SPECIALIST CONTRACTOR SHALL EXTEND EXISTING SYSTEM NETWORK CABLING AS REQUIRED. CABLE ROUTES TO TAKE COGNISANCE OF HERITAGE FINISHES ETC.

ACCESS CONTROL AND CCTV EQUIPMENT WILL GENERALLY BE SURFACE FIXED TO WALLS/SOFFITS IN EXPOSED SERVICES AREAS AND ON CEILINGS WHERE SUSPENDED CEILINGS.

ALL CABLING WILL BE INSTALLED ON TRAY CONTAINMENT ON PRIMARY ROUTES AND IN CONDUIT TO FINAL EQUIPMENT LOCATIONS. CABLE ROUTES SHALL BE CONCEALED WHEREVER POSSIBLE.

REFER TO 6101 SERIES DRAWINGS FOR PRIMARY CONTAINMENT ROUTES.

S4 - P02	20/02/2023	LBC ISSUE	KR	SH
S4 - P02	28/10/2022	TENDER ISSUE	KR	SH
S2 - P01	30/09/2022	INFORMATION ISSUE	KR	SH
SUIT-REV	DATE	DESCRIPTION	DRN	CHK
STATUS				

FOR INFORMATION

THIS DRAWING IS COPYRIGHT. DO NOT SCALE FROM DRAWING. THE CONTRACTOR AND THEIR SUB-CONTRACTORS ARE TO VERIFY ALL DIMENSIONS ON SITE BEFORE MAKING SHOP DRAWINGS OR COMMENCING MANUFACTURE.

KJ TAIT
ENGINEERS

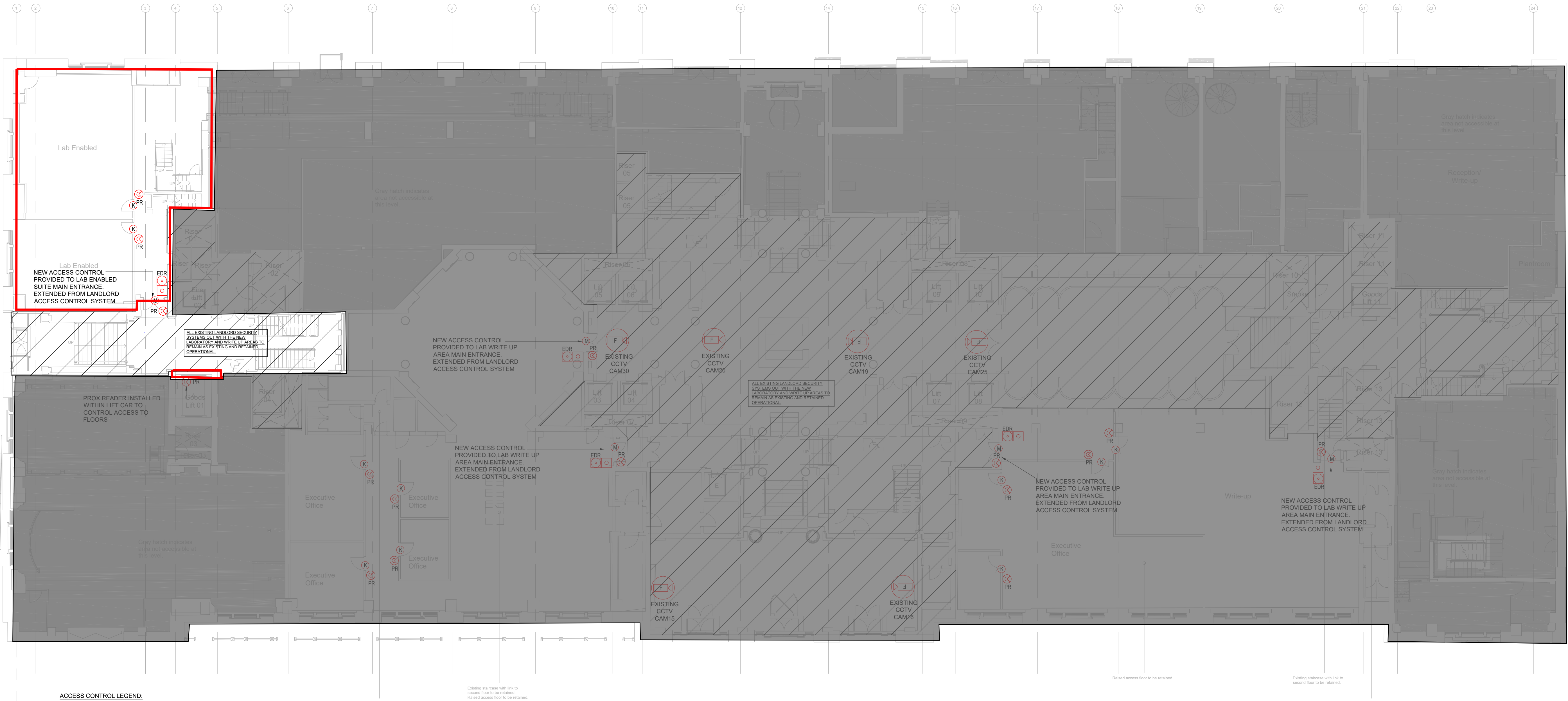
1 Fitzroy Square
London W1T 5HF
T +44 (0) 207 588 0952
E london@kjtait.com
W www.kjtait.com

PROJECT INFORMATION

CLIENT	OXFORD VICTORIA HOUSE
PROJECT	DEVELOPMENT LTD LONDON, WC1B 4DA

DRAWING INFORMATION

DRAWING TITLE ELECTRICAL SERVICES MEZZANINE LEVEL SECURITY LAYOUT			
DESIGNED BY	KR	DATE	SEPT. 2022
DRAWN BY	MZ	KJT JOB No.	
SCALE	1:150 @ A1		L3221
JOB CODE	ORIGIN-VOL-LEVEL-TYPE-ROLE-CLASS NUMBER	SUIT-REV	
L3221	KJT-ZZ-MZ-DR-E-6701	S4-P02	



- DAC** NEW DOOR ACCESS CONTROLLER - NOTE THESE ARE NOTE INDICATED ON THE DRAWING AT STAGE 3. THE SPECIALIST SECURITY CONTRACTOR SHALL DETERMINE THE QUANTITY OF CONTROLLERS REQUIRED TO SUIT THE GENETEC SYSTEM. LOCATION OF CONTROLLERS TO BE AGREED. SECURITY CONTRACTOR TO INCLUDE FOR ALL NECESSARY FIRE ALARM INTERFACES TO ENSURE ALL DOORS RELEASE ON FIRE SIGNAL.
- EDR** NEW GREEN SEMI-FLUSH BREAKGLASS TO ALLOW EMERGENCY USE OF DOOR ON SYSTEM FAILURE
- PR** NEW CARD ACCESS READER (PROXIMITY) WITH BLE COMPATIBILITY
- M** ELECTRO MAGNETIC SOLENOID LOCK. EXACT TYPE TO BE SPECIFIED BY ARCHITECT AND INSTALLED BY DOOR IRONMONGERY CONTRACTOR.
- K** ELECTRO MAGNETIC STRIKE "KEEPER LOCK WITH FREE LATCHING EGRESS. TO BE SPECIFIED BY ARCHITECT AND INSTALLED BY DOOR IRONMONGERY CONTRACTOR.
- ENT CP** ENTRYPHONE CALL PANEL.

CCTV SYSTEM LEGEND:

- CCTV** CCTV MONITOR/KEYBOARD & JOYSTICK
- CCTV MP** CCTV MULTIPLEXOR
- CCTV DR** CCTV DIGITAL RECORDER

DISABLED ALARM LEGEND:

- R** DISABLED RESET UNIT
- DIS** DISABLED CALL INDICATOR/BUZZER
- DIS** DISABLED PULL CORD/INDICATOR
- DCSRP** DISABLED CALL SYSTEM REMOTE INDICATOR PANEL

EXISTING CORE AREAS ARE GENERALLY OUTWITH THE REFURBISHMENT SCOPE/WORKS AREAS. SECURITY SYSTEMS SPECIALIST CONTRACTOR SHALL EXTEND EXISTING SYSTEM NETWORK CABLING AS REQUIRED. CABLE ROUTES TO TAKE COGNISANCE OF HERITAGE FINISHES ETC.

ACCESS CONTROL AND CCTV EQUIPMENT WILL GENERALLY BE SURFACE FIXED TO WALLS/OFFITS IN EXPOSED SERVICES AREAS AND ON CEILINGS WHERE SUSPENDED CEILINGS.

ALL CABLING WILL BE INSTALLED ON TRAY CONTAINMENT ON PRIMARY ROUTES AND IN CONDUIT TO FINAL EQUIPMENT LOCATIONS. CABLE ROUTES SHALL BE CONCEALED WHEREVER POSSIBLE.

S4 - P02	20/02/2023	LBC ISSUE	KR	SH
S4 - P02	28/10/2022	TENDER ISSUE	KR	SH
S2 - P01	30/09/2022	INFORMATION ISSUE	KR	SH
SUIT-REV	DATE	DESCRIPTION	DRN	CHK
STATUS				

FOR INFORMATION

THIS DRAWING IS COPYRIGHT. DO NOT SCALE FROM DRAWING. THE CONTRACTOR AND THEIR SUB-CONTRACTORS ARE TO VERIFY ALL DIMENSIONS ON SITE BEFORE MAKING SHOP DRAWINGS OR COMMENCING MANUFACTURE.

KJ TAIT
ENGINEERS

1 Fitzroy Square
London W1T 5HF
T +44 (0) 207 588 0952
E london@kjtait.com
W www.kjtait.com

PROJECT INFORMATION			
CLIENT	OXFORD VICTORIA HOUSE		
PROJECT	DEVELOPMENT LTD LONDON, WC1B 4DA		
DRAWING INFORMATION			
DRAWING TITLE	ELECTRICAL SERVICES UPPER GROUND FLOOR SECURITY LAYOUT		
DESIGNED BY	KR	DATE	SEPT. 2022
DRAWN BY	MZ	KJT JOB No.	
SCALE	1:150 @ A1	L3221	
JOB CODE	ORIGIN/VOL-LEVEL-TYPE-ROLE-CLASS NUMBER		
L3221	KJT-ZZ-UG-DR-E-6701		S4-P02