

- Legend**
- TP&N DISTRIBUTION BOARD
 - SURFACE MOUNTED ON ROD OR CONTAINMENT LED CIRCULAR WHITE DALI LUMINAIRE AS WHITECROFT PORTAL LED.22W, 2300lm, 4000K LED.
 - RECESSED IP44 LED DALI CIRCULAR WHITE DOWNLIGHTER AS WHITECROFT MIRAGE3 C165 LED 16W, 2010lm, 4000K LED. WITH CLEAR GLASS COVER. SEMI SPECULAR OPTIC
 - E - DENOTES COMPLETE WITH 3 HOUR DURATION EMERGENCY BATTERY PACK. OR THORN LIGHTING EQUIVALENT
 - RECESSED SQUARE ARCHITECTURAL ADJUSTABLE GIMBAL DOWNLIGHT WITH HIGH OUTPUT LED AND REMOTE DALI DRIVER. 8W 1065lm FOR EACH. S - DENOTES SINGLE SPOT, D - DENOTES DOUBLE SPOT. AS WHITECROFT MINION OR EQUIVALENT FROM THORN LIGHTING.
 - CEILING RECESSED NON-MAINTAINED EMERGENCY LUMINAIRE AS ZUMTOBEL RESCLITE PRO MINI ESCAPE HIGH OUTPUT OR WHITECROFT FLORIN E3
 - CEILING RECESSED NON-MAINTAINED EMERGENCY LUMINAIRE AS ZUMTOBEL RESCLITE PRO MINI ANTI-PANIC HIGH OUTPUT OR WHITECROFT FLORIN E3
 - CEILING SURFACE MOUNTED NON-MAINTAINED EMERGENCY LUMINAIRE AS ZUMTOBEL RESCLITE PRO MINI ESCAPE HIGH OUTPUT OR WHITECROFT FLORIN E3
 - CEILING SURFACE MOUNTED NON-MAINTAINED EMERGENCY LUMINAIRE AS ZUMTOBEL RESCLITE PRO MINI ANTI-PANIC HIGH OUTPUT OR WHITECROFT FLORIN E3
 - CEILING SURFACE MOUNTED NON-MAINTAINED EMERGENCY LUMINAIRE AS ZUMTOBEL RESCLITE PRO MINI SPOT OR WHITECROFT FLORIN E3
 - SURFACE WALL MOUNTED ABOVE DOOR SINGLE SIDED MAINTAINED OPERATION EMERGENCY ESCAPE SIGN AS ZUMTOBEL ONLITE ARTSIGN OR EQUIVALENT. ARROW DENOTES DIRECTION OF TRAVEL. AHEAD, LEFT, RIGHT, DOWN.
 - CEILING SURFACE MOUNTED SINGLE/DOUBLE SIDED MAINTAINED OPERATION EMERGENCY ESCAPE SIGN AS ZUMTOBEL ONLITE PURESIGN S-SINGLE SIDE, D- DOUBLE SIDE. ARROW DENOTES DIRECTION OF TRAVEL. AHEAD, LEFT, RIGHT, DOWN.
 - CEILING RECESSED SINGLE/DOUBLE SIDED MAINTAINED OPERATION EMERGENCY ESCAPE SIGN AS ZUMTOBEL ONLITE PURESIGN S-SINGLE SIDE, D- DOUBLE SIDE. ARROW DENOTES DIRECTION OF TRAVEL. AHEAD, LEFT, RIGHT, DOWN.
 - SUSPENDED ARCHITECTURAL LINEAR PENDANT LED ALUMINIUM PROFILE LUMINAIRE 1250mm LENGTH WITH SUSPENSION KIT 24.6W, 2875lm POD LED OPTIC. DIRECT LIGHT DISTRIBUTION ONLY. AS WHITECROFT AVENUE METRO SUSPENDED VITALITY OR EQUIVALENT FROM THORN LIGHTING.
 - RECESSED ARCHITECTURAL LINEAR LED ALUMINIUM PROFILE LUMINAIRE 1250mm LENGTH WITH RECESSING KIT 24.6W, 2875lm POD LED OPTIC DALI. DIRECT LIGHT DISTRIBUTION ONLY. AS WHITECROFT AVENUE METRO RECESSED VITALITY OR EQUIVALENT FROM THORN LIGHTING.
 - 1200mm SURFACE ARCHITECTURAL LINEAR LED DALI LUMINAIRE WITH OPAL DIFFUSER. 4200lm 29W 4000K LED. AS WHITECROFT STILETTO LED OR EQUIVALENT FROM THORN LIGHTING
 - 1200mm SURFACE IP66 LINEAR LED DALI LUMINAIRE WITH DIFFUSER. 6425lm 46W 4000K LED. AS WHITECROFT ACL INDUSTRY OR EQUIVALENT FROM THORN LIGHTING. E - DENOTES INTEGRAL 3 HOUR DURATION EMERGENCY BATTERY PACK
 - CEILING RECESSED MODULAR IP54 RATED LED DALI LUMINAIRE WITH TP(a) DIFFUSER WITH SMOOTH OUTER FACE FOR CLEANING. 33W, 3290lm, 4000K LED. LUMINAIRE AS WHITECROFT HYGIENE OR EQUIVALENT FROM THORN LIGHTING. E - DENOTES INTEGRAL 3 HOUR DURATION EMERGENCY BATTERY PACK
 - EXISTING OR NEW (SEE NOTES) DALI 35W 2700LM 3000K LED TRACK MOUNTED PENDANT LUMINAIRE CW TRACK ADAPTOR WITH INTEGRAL DALI DRIVER STORED FROM STRIP OUT PHASE OF OTHER FLOORS AND REINSTALLED IN NEW LOCATION SHOWN. LUMINAIRES TO BE CLEANED, TESTED AND RECONNECTED TO TRACK. AS ORLIGHT CYMBAL.
 - EXISTING OR NEW (SEE NOTES) SURFACE SUSPENDED TRACK SYSTEM STORED FROM STRIP OUT PHASE OF OTHER FLOORS AND REINSTALLED IN NEW LOCATION COMPLETE WITH END FEED UNIT AND SUPPORTS ETC. TRACK TO BE TESTED AND REINSTALLED IN NEW LOCATIONS SHOWN. ALLOW FOR REPLACEMENT SUPPORTS/BRACKETS AS REQUIRED. AS ORLIGHT ORLTL TRACK SYSTEM.
 - LED TAPE WITH OPAL COVER & DALI DRIVER MOUNTED TO REAR OF MIRRORS & WC SHADOW GAP IN TOILETS. FINAL REQUIREMENTS TO BE AGREED WITH ARCHITECT.
 - LIGHTING CONTROL MULTI-PURPOSE DALI NETWORKED PIR (PRESENCE OR ABSENCE) & PHOTOCELL SENSOR. D-DAYLIGHT SENSOR ONLY. SURFACESUSPENDED ON ROD OR CEILING RECESSED TO SUIT CEILING TYPE
 - 13AMP UNSWITCHED FUSED CONNECTION UNIT
 - 2 WAY CENTRE RETRACTIVE LIGHT SWITCH 'N DENOTES NUMBER OF GANGS
 - EMERGENCY TEST KEY SWITCH
 - EXISTING LIGHTING TO BE RETAINED AND PROTECTED DURING THE REFURBISHMENT WORKS. EXISTING CORE LIGHTING TO REMAIN OPERATIONAL AT ALL TIMES. ALLOW FOR ALTERING EXISTING CIRCUITING TO PROVIDE TEMPORARY SUPPLIES TO LIGHTING IN THESE AREAS DURING THE REPLACEMENT OF ANY DISTRIBUTION BOARDS THAT EFFECT THESE AREAS.

THE LIGHTING LAYOUT DRAWN SHOWS THE LIGHTING TO THE FULLY FITTED OUT LAB ENABLED SPACES. TEMPORARY SACRIFICIAL LIGHTING SHALL BE INSTALLED TO PROVIDE MINIMUM CIRCULATION ILLUMINATION AS PART OF THE SHELL WORKS.

| | | | | |
|----------|------------|--|-----|-----|
| S4 - P03 | 20/02/2023 | LBC ISSUE | KR | SH |
| S4 - P03 | 14/02/2023 | MINOR ADDS/CHANGES TO EMERG LIGHTING ADDED AS CLOUDED. | KR | SH |
| S4 - P02 | 28/10/2022 | TENDER ISSUE DISTRIBUTION BOARDS/NOTES ADDED | KR | SH |
| S2 - P01 | 30/09/2022 | INFORMATION ISSUE | KR | SH |
| SUIT-REV | DATE | DESCRIPTION | DRN | CHK |
| STATUS | | | | |

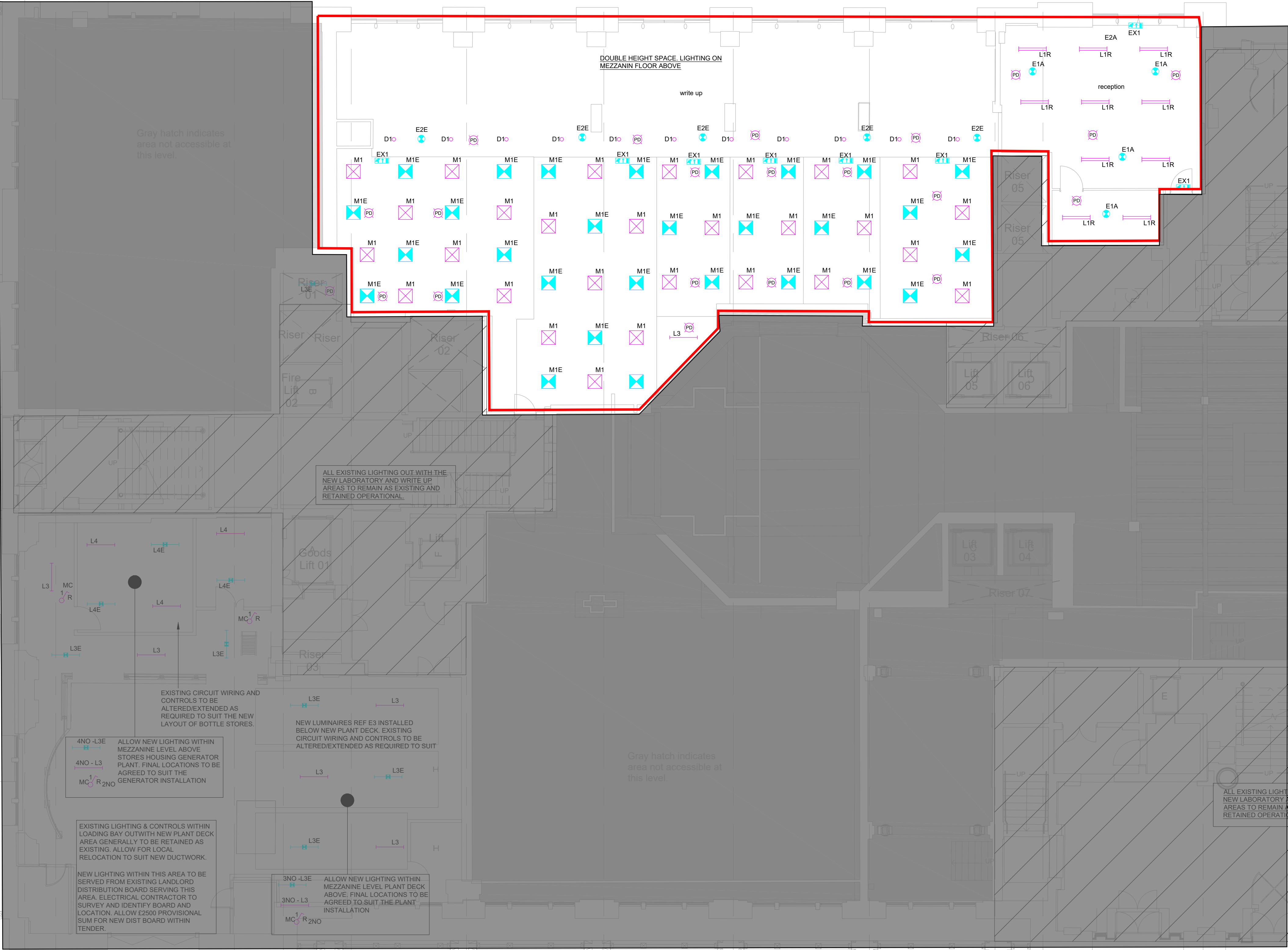
FOR INFORMATION

THIS DRAWING IS COPYRIGHT. DO NOT SCALE FROM DRAWING. THE CONTRACTOR AND THEIR SUB-CONTRACTORS ARE TO VERIFY ALL DIMENSIONS ON SITE BEFORE MAKING SHOP DRAWINGS OR COMMENCING MANUFACTURE.

KJ TAIT
ENGINEERS

1 Fitzroy Square
London W1T 5HF
T +44 (0) 207 385 0952
E london@kjta.it.com
W www.kjta.it.com

| PROJECT INFORMATION | | | |
|---------------------|---|-------------|-----------|
| CLIENT | OXFORD VICTORIA HOUSE | | |
| PROJECT | DEVELOPMENT LTD | | |
| | LONDON, WC1B 4DA | | |
| DRAWING INFORMATION | | | |
| DRAWING TITLE | ELECTRICAL SERVICES BASEMENT LEVEL 1 LIGHTING LAYOUT SHEET 1 of 2 | | |
| DESIGNED BY | KR | DATE | Sept 2022 |
| DRAWN BY | MZ | KJT JOB No. | L3221 |
| SCALE | 1:100 @ A1 | | |
| JOB CODE | ORIGIN-VOL-LEVEL-TYPE-ROLE-CLASS NUMBER | | SUIT-REV |
| L3221 | KJT-01-B1-DR-E-6301 | | S4-P03 |



- Legend**
- TP&N DISTRIBUTION BOARD
 - D10 SURFACE MOUNTED ON ROD OR CONTAINMENT LED CIRCULAR WHITE DALI LUMINAIRE AS WHITECROFT PORTAL LED 22W, 2300lm, 4000K LED.
 - D20 RECESSED IP44 LED DALI CIRCULAR WHITE DOWNLIGHTER AS WHITECROFT MIRAGES C165 LED 16W, 2010lm, 4000K LED. WITH CLEAR GLASS COVER. SEMI SPECULAR OPTIC
 - D2E E - DENOTES COMPLETE WITH 3 HOUR DURATION EMERGENCY BATTERY PACK. OR THORN LIGHTING EQUIVALENT
 - D3S RECESSED SQUARE ARCHITECTURAL ADJUSTABLE GIMBAL DOWNLIGHT WITH HIGH OUTPUT LED AND REMOTE DALI DRIVER. 8W 1065lm FOR EACH. S - DENOTES SINGLE SPOT, D - DENOTES DOUBLE SPOT. AS WHITECROFT MINION OR EQUIVALENT FROM THORN LIGHTING.
 - D3D
 - E1E CEILING RECESSED NON-MAINTAINED EMERGENCY LUMINAIRE AS ZUMTOBEL RESCLITE PRO MINI ESCAPE HIGH OUTPUT OR WHITECROFT FLORIN E3
 - E1A CEILING RECESSED NON-MAINTAINED EMERGENCY LUMINAIRE AS ZUMTOBEL RESCLITE PRO MINI ANTI-PANIC HIGH OUTPUT OR WHITECROFT FLORIN E3
 - E2E CEILING SURFACE MOUNTED NON-MAINTAINED EMERGENCY LUMINAIRE AS ZUMTOBEL RESCLITE PRO MINI ESCAPE HIGH OUTPUT OR WHITECROFT FLORIN E3
 - E2A CEILING SURFACE MOUNTED NON-MAINTAINED EMERGENCY LUMINAIRE AS ZUMTOBEL RESCLITE PRO MINI ANTI-PANIC HIGH OUTPUT OR WHITECROFT FLORIN E3
 - E2S CEILING SURFACE MOUNTED NON-MAINTAINED EMERGENCY LUMINAIRE AS ZUMTOBEL RESCLITE PRO MINI SPOT OR WHITECROFT FLORIN E3
 - EX1 SURFACE WALL MOUNTED ABOVE DOOR SINGLE SIDED MAINTAINED OPERATION EMERGENCY ESCAPE SIGN AS ZUMTOBEL ONLITE ARTSIGN OR EQUIVALENT. ARROW DENOTES DIRECTION OF TRAVEL, AHEAD, LEFT, RIGHT, DOWN.
 - EX2S CEILING SURFACE MOUNTED SINGLE/DOUBLE SIDED MAINTAINED OPERATION EMERGENCY ESCAPE SIGN AS ZUMTOBEL ONLITE PURESIGN S-SINGLE SIDE, D- DOUBLE SIDE. ARROW DENOTES DIRECTION OF TRAVEL, AHEAD, LEFT, RIGHT, DOWN.
 - EX2D
 - EX3S CEILING RECESSED SINGLE/DOUBLE SIDED MAINTAINED OPERATION EMERGENCY ESCAPE SIGN AS ZUMTOBEL ONLITE PURESIGN S-SINGLE SIDE, D- DOUBLE SIDE. ARROW DENOTES DIRECTION OF TRAVEL, AHEAD, LEFT, RIGHT, DOWN.
 - EX3D
 - L1 SUSPENDED ARCHITECTURAL LINEAR PENDANT LED ALUMINIUM PROFILE LUMINAIRE 1250mm LENGTH WITH SUSPENSION KIT 24.6W, 2875lm POD LED OPTIC. DIRECT LIGHT DISTRIBUTION ONLY. AS WHITECROFT AVENUE METRO SUSPENDED VITALITY OR EQUIVALENT FROM THORN LIGHTING.
 - L1R RECESSED ARCHITECTURAL LINEAR LED ALUMINIUM PROFILE LUMINAIRE 1250mm LENGTH WITH RECESSING KIT 24.6W, 2875lm POD LED OPTIC DALI. DIRECT LIGHT DISTRIBUTION ONLY. AS WHITECROFT AVENUE METRO RECESSED VITALITY OR EQUIVALENT FROM THORN LIGHTING.
 - L2 1200mm SURFACE ARCHITECTURAL LINEAR LED DALI LUMINAIRE WITH OPAL DIFFUSER. 4200lm 29W 4000K LED. AS WHITECROFT STILETTO LED OR EQUIVALENT FROM THORN LIGHTING
 - L3 1200mm SURFACE IP66 LINEAR LED DALI LUMINAIRE WITH DIFFUSER. 8425lm 40W 4000K LED. AS WHITECROFT ACL INDUSTRY OR EQUIVALENT FROM THORN LIGHTING. E - DENOTES INTEGRAL 3 HOUR DURATION EMERGENCY BATTERY PACK
 - L3E
 - L4 1200mm SURFACE IP66 ATEX ZONE 2 RATED LINEAR LED DALI LUMINAIRE WITH DIFFUSER. 4200lm 40W 4000K LED. AS WHITECROFT ACLN OR EQUIVALENT FROM THORN LIGHTING. E - DENOTES INTEGRAL 3 HOUR DURATION EMERGENCY BATTERY PACK
 - L4E
 - P1 CEILING RECESSED MODULAR IP54 RATED LED DALI LUMINAIRE WITH TPI(a) DIFFUSER WITH SMOOTH OUTER FACE FOR CLEANING. 33W, 3290lm, 4000K LED. LUMINAIRE AS WHITECROFT HYGIENE OR EQUIVALENT FROM THORN LIGHTING. E - DENOTES INTEGRAL 3 HOUR DURATION EMERGENCY BATTERY PACK
 - T1 EXISTING OR NEW (SEE NOTES) DALI 35W 2700LM 3000K LED TRACK MOUNTED PENDANT LUMINAIRE C/W TRACK ADAPTOR WITH INTEGRAL DALI DRIVER STORED FROM STRIP OUT PHASE OF OTHER FLOORS AND REINSTALLED IN NEW LOCATION SHOWN. LUMINAIRES TO BE CLEANED, TESTED AND RECONNECTED TO TRACK. AS ORLIGHT CYMBAL.
 - TA1 EXISTING OR NEW (SEE NOTES) SURFACE SUSPENDED TRACK SYSTEM STORED FROM STRIP OUT PHASE OF OTHER FLOORS AND REINSTALLED IN NEW LOCATION COMPLETE WITH END FEED UNIT AND SUPPORTS ETC. TRACK TO BE TESTED AND REINSTALLED IN NEW LOCATIONS SHOWN. ALLOW FOR REPLACEMENT SUPPORTS/BRACKETS AS REQUIRED.
 - PD BEARING CORREL TRACK SYSTEM DALI NETWORKED PIR (PRESENCE OR ABSENCE) & PHOTOCELL SENSOR. DELTA WIRE WITH SERRA COW. SURFACE MOUNTED INTO REAR OF CABINETS & RESERVED AS IN NOTE 176. FINAL REQUIREMENTS TO BE AGREED WITH ARCHITECT. 13AMP UNSWITCHED FUSED CONNECTION UNIT
 - MC 2 WAY CENTRE RETRACTIVE LIGHT SWITCH *N DENOTES NUMBER OF GANGS
 - N R
 - EM EMERGENCY TEST KEY SWITCH
 - EXISTING LIGHTING TO BE RETAINED AND PROTECTED DURING THE REFURBISHMENT WORKS. EXISTING CORE LIGHTING TO REMAIN OPERATIONAL AT ALL TIMES. ALLOW FOR ALTERING EXISTING CIRCUITING TO PROVIDE TEMPORARY SUPPLIES TO LIGHTING IN THESE AREAS DURING THE REPLACEMENT OF ANY DISTRIBUTION BOARDS THAT EFFECT THESE AREAS.

THE LIGHTING LAYOUT DRAWN SHOWS THE LIGHTING TO THE FULLY FITTED OUT LAB ENABLED SPACES. TEMPORARY SACRIFICIAL LIGHTING SHALL BE INSTALLED TO PROVIDE MINIMUM CIRCULATION ILLUMINATION AS PART OF THE SHELL WORKS.

| | | | | |
|----------|------------|--|-----|-----|
| S4 - P02 | 20/02/2023 | LBC ISSUE | KR | SH |
| S4 - P02 | 28/10/2022 | TENDER ISSUE DISTRIBUTION BOARDS/NOTES ADDED | KR | SH |
| S2 - P01 | 30/09/2022 | INFORMATION ISSUE | KR | SH |
| SUIT-REV | DATE | DESCRIPTION | DRN | CHK |
| STATUS | | | | |

FOR INFORMATION

THIS DRAWING IS COPYRIGHT. DO NOT SCALE FROM DRAWING. THE CONTRACTOR AND THEIR SUB-CONTRACTORS ARE TO VERIFY ALL DIMENSIONS ON SITE BEFORE MAKING SHOP DRAWINGS OR COMMENCING MANUFACTURE.

KJ TAIT

ENGINEERS

1 Fitzroy Square
London W1T 5HF
T +44 (0) 207 388 0952
E london@kjtait.com
W www.kjtait.com

| PROJECT INFORMATION | | | |
|---------------------|---|-------------|-----------|
| CLIENT | OXFORD VICTORIA HOUSE | | |
| PROJECT | DEVELOPMENT LTD | | |
| | LONDON, WC1B 4DA | | |
| DRAWING INFORMATION | | | |
| DRAWING TITLE | ELECTRICAL SERVICES | | |
| | LOWER GROUND FLOOR | | |
| | LIGHTING LAYOUT SHEET 1 of 2 | | |
| DESIGNED BY | KR | DATE | Sept 2022 |
| DRAWN BY | MZ | KJT JOB No. | |
| SCALE | 1:100 @ A1 | L3221 | |
| JOB CODE | ORIGIN/VOL-LEVEL-TYPE-ROLE-CLASS NUMBER | | SUIT-REV |
| L3221 | KJT-01-LG-DR-E-6301 | | S4-P02 |



- Legend**
- TP&N DISTRIBUTION BOARD
 - D10 SURFACE MOUNTED ON ROD OR CONTAINMENT LED CIRCULAR WHITE DALI LUMINAIRE AS WHITECROFT PORTAL LED.22W, 2300Lm, 4000K LED.
 - D2 RECESSED IP44 LED DALI CIRCULAR WHITE DOWNLIGHTER AS WHITECROFT MIRAGE3 C165 LED 16W, 2010Lm, 4000K LED. WITH CLEAR GLASS COVER, SEMI SPECULAR OPTIC E - DENOTES COMPLETE WITH 3 HOUR DURATION EMERGENCY BATTERY PACK. OR THORN LIGHTING EQUIVALENT
 - D3S RECESSED SQUARE ARCHITECTURAL ADJUSTABLE GIMBAL DOWNLIGHT WITH HIGH OUTPUT LED AND REMOTE DALI DRIVER. 8W 1055Lm FOR EACH. S - DENOTES SINGLE SPOT, D - DENOTES DOUBLE SPOT. AS WHITECROFT MINION OR EQUIVALENT FROM THORN LIGHTING.
 - E1E CEILING RECESSED NON-MAINTAINED EMERGENCY LUMINAIRE AS ZUMTOBEL RESCLITE PRO MINI ESCAPE HIGH OUTPUT OR WHITECROFT FLORIN E3
 - E1A CEILING RECESSED NON-MAINTAINED EMERGENCY LUMINAIRE AS ZUMTOBEL RESCLITE PRO MINI ANTI PANIC HIGH OUTPUT OR WHITECROFT FLORIN E3
 - E2E CEILING SURFACE MOUNTED NON-MAINTAINED EMERGENCY LUMINAIRE AS ZUMTOBEL RESCLITE PRO MINI ESCAPE HIGH OUTPUT OR WHITECROFT FLORIN E3
 - E2A CEILING SURFACE MOUNTED NON-MAINTAINED EMERGENCY LUMINAIRE AS ZUMTOBEL RESCLITE PRO MINI ANTI-PANIC HIGH OUTPUT OR WHITECROFT FLORIN E3
 - E2S CEILING SURFACE MOUNTED NON-MAINTAINED EMERGENCY LUMINAIRE AS ZUMTOBEL RESCLITE PRO MINI SPOT OR WHITECROFT FLORIN E3
 - EX1 SURFACE WALL MOUNTED ABOVE DOOR SINGLE SIDED MAINTAINED OPERATION EMERGENCY ESCAPE SIGN AS ZUMTOBEL ONLITE ARTSIGN OR EQUIVALENT. ARROW DENOTES DIRECTION OF TRAVEL, AHEAD, LEFT, RIGHT, DOWN.
 - EX2S CEILING SURFACE MOUNTED SINGLE/DOUBLE SIDED MAINTAINED OPERATION EMERGENCY ESCAPE SIGN AS ZUMTOBEL ONLITE PURESIGN S=SINGLE SIDE, D- DOUBLE SIDE. ARROW DENOTES DIRECTION OF TRAVEL, AHEAD, LEFT, RIGHT, DOWN.
 - EX2D CEILING SURFACE MOUNTED SINGLE/DOUBLE SIDED MAINTAINED OPERATION EMERGENCY ESCAPE SIGN AS ZUMTOBEL ONLITE PURESIGN S=SINGLE SIDE, D- DOUBLE SIDE. ARROW DENOTES DIRECTION OF TRAVEL, AHEAD, LEFT, RIGHT, DOWN.
 - EX3S CEILING RECESSED SINGLE/DOUBLE SIDED MAINTAINED OPERATION EMERGENCY ESCAPE SIGN AS ZUMTOBEL ONLITE PURESIGN S=SINGLE SIDE, D- DOUBLE SIDE. ARROW DENOTES DIRECTION OF TRAVEL, AHEAD, LEFT, RIGHT, DOWN.
 - EX3D CEILING RECESSED SINGLE/DOUBLE SIDED MAINTAINED OPERATION EMERGENCY ESCAPE SIGN AS ZUMTOBEL ONLITE PURESIGN S=SINGLE SIDE, D- DOUBLE SIDE. ARROW DENOTES DIRECTION OF TRAVEL, AHEAD, LEFT, RIGHT, DOWN.
 - L1 SUSPENDED ARCHITECTURAL LINEAR PENDANT LED ALUMINIUM PROFILE LUMINAIRE. 1250mm LENGTH WITH SUSPENSION KIT 24.6W, 2875Lm POD LED OPTIC. DIRECT LIGHT DISTRIBUTION ONLY. AS WHITECROFT AVENUE METRO SUSPENDED VITALITY OR EQUIVALENT FROM THORN LIGHTING.
 - L1R RECESSED ARCHITECTURAL LINEAR LED ALUMINIUM PROFILE LUMINAIRE. 1250mm LENGTH WITH RECESSING KIT 24.6W, 2875Lm POD LED OPTIC DALI. DIRECT LIGHT DISTRIBUTION ONLY. AS WHITECROFT AVENUE METRO RECESSED VITALITY OR EQUIVALENT FROM THORN LIGHTING.
 - L2 1200mm SURFACE ARCHITECTURAL LINEAR LED DALI LUMINAIRE WITH OPAL DIFFUSER. 4200Lm 29W 4000K LED. AS WHITECROFT STILETTO LED OR EQUIVALENT FROM THORN LIGHTING
 - L3 1200mm SURFACE IP66 LINEAR LED DALI LUMINAIRE WITH DIFFUSER. 6425Lm 46W 4000K LED. AS WHITECROFT ACL INDUSTRY OR EQUIVALENT FROM THORN LIGHTING. E - DENOTES INTEGRAL 3 HOUR DURATION EMERGENCY BATTERY PACK
 - L3E 1200mm SURFACE IP66 LINEAR LED DALI LUMINAIRE WITH DIFFUSER. 6425Lm 46W 4000K LED. AS WHITECROFT ACL INDUSTRY OR EQUIVALENT FROM THORN LIGHTING. E - DENOTES INTEGRAL 3 HOUR DURATION EMERGENCY BATTERY PACK
 - M1 CEILING RECESSED MODULAR IP54 RATED LED DALI LUMINAIRE WITH TP(a) DIFFUSER WITH SMOOTH OUTER FACE FOR CLEANING. 33W, 3290Lm, 4000K LED. LUMINAIRE AS WHITECROFT HYGIENE OR EQUIVALENT FROM THORN LIGHTING. E - DENOTES INTEGRAL 3 HOUR DURATION EMERGENCY BATTERY PACK
 - M1E CEILING RECESSED MODULAR IP54 RATED LED DALI LUMINAIRE WITH TP(a) DIFFUSER WITH SMOOTH OUTER FACE FOR CLEANING. 33W, 3290Lm, 4000K LED. LUMINAIRE AS WHITECROFT HYGIENE OR EQUIVALENT FROM THORN LIGHTING. E - DENOTES INTEGRAL 3 HOUR DURATION EMERGENCY BATTERY PACK
 - P1 EXISTING OR NEW (SEE NOTES) DALI 35W 2700LM 3000K LED TRACK MOUNTED PENDANT LUMINAIRE C/W TRACK ADAPTOR WITH INTEGRAL DALI DRIVER STORED FROM STRIP OUT PHASE OF OTHER FLOORS AND REINSTALLED IN NEW LOCATION SHOWN. LUMINAIRES TO BE CLEANED, TESTED AND RECONNECTED TO TRACK. AS ORLIGHT CYMBAL.
 - T1 EXISTING OR NEW (SEE NOTES) SURFACE SUSPENDED TRACK SYSTEM STORED FROM STRIP OUT PHASE OF OTHER FLOORS AND REINSTALLED IN NEW LOCATION COMPLETE WITH END FEED UNIT AND SUPPORTS ETC. TRACK TO BE TESTED AND REINSTALLED IN NEW LOCATIONS SHOWN. ALLOW FOR REPLACEMENT SUPPORTS/BRACKETS AS REQUIRED. AS ORLIGHT ORLTL TRACK SYSTEM.
 - TA1 LED TAPE WITH OPAL COVER & DALI DRIVER MOUNTED TO REAR OF MIRRORS & WC SHADOW GAP IN TOILETS. FINAL REQUIREMENTS TO BE AGREED WITH ARCHITECT.
 - PD LIGHTING CONTROL MULTI-PURPOSE DALI NETWORKED PIR (PRESENCE OR ABSENCE) & PHOTOCELL SENSOR. DL=DAYLIGHT SENSOR ONLY. SURFACE/SUSPENDED ON ROD OR CEILING RECESSED TO SUIT CEILING TYPE
 - MC 13AMP UNSWITCHED FUSED CONNECTION UNIT
 - N 2 WAY CENTRE RETRACTIVE LIGHT SWITCH *N DENOTES NUMBER OF GANGS
 - R EMERGENCY TEST KEY SWITCH
 - EM EMERGENCY TEST KEY SWITCH
 - EXISTING LIGHTING TO BE RETAINED AND PROTECTED DURING THE REFURBISHMENT WORKS. EXISTING CORE LIGHTING TO REMAIN OPERATIONAL AT ALL TIMES. ALLOW FOR ALTERING EXISTING CIRCUITING TO PROVIDE TEMPORARY SUPPLIES TO LIGHTING IN THESE AREAS DURING THE REPLACEMENT OF ANY DISTRIBUTION BOARDS THAT EFFECT THESE AREAS.

THE LIGHTING LAYOUT DRAWN SHOWS THE LIGHTING TO THE FULLY FITTED OUT LAB ENABLED SPACES. TEMPORARY SACRIFICIAL LIGHTING SHALL BE INSTALLED TO PROVIDE MINIMUM CIRCULATION ILLUMINATION AS PART OF THE SHELL WORKS.

| | | | | |
|----------|------------|--|-----|-----|
| S4 - P03 | 20/02/2023 | LBC ISSUE | KR | SH |
| S4 - P03 | 14/02/2023 | MINOR ADDS/CHANGES TO EMERG LIGHTING ADDED AS CLOUDED. | KR | SH |
| S4 - P02 | 28/10/2022 | TENDER ISSUE DISTRIBUTION BOARDS/NOTES ADDED | KR | SH |
| S2 - P01 | 30/09/2022 | INFORMATION ISSUE | KR | SH |
| SUIT-REV | DATE | DESCRIPTION | DRN | CHK |
| STATUS | | | | |

FOR INFORMATION

THIS DRAWING IS COPYRIGHT. DO NOT SCALE FROM DRAWING. THE CONTRACTOR AND THEIR SUB-CONTRACTORS ARE TO VERIFY ALL DIMENSIONS ON SITE BEFORE MAKING SHOP DRAWINGS OR COMMENCING MANUFACTURE.

KJ TAIT
ENGINEERS

1 Fitzroy Square
London W1T 5HF
T +44 (0) 207 385 0952
E london@kjtait.com
W www.kjtait.com

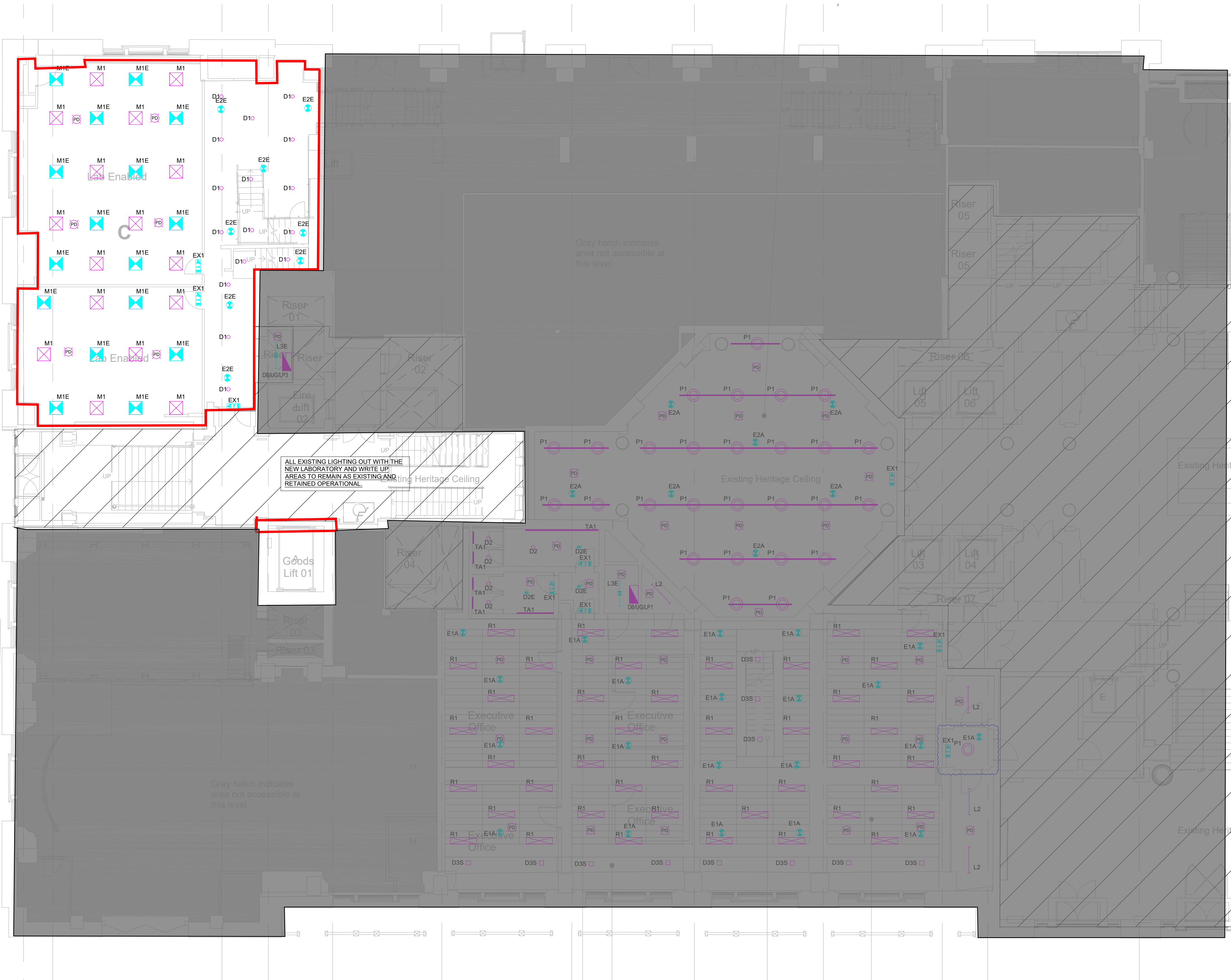
PROJECT INFORMATION

CLIENT OXFORD VICTORIA HOUSE
PROJECT DEVELOPMENT LTD
LONDON, WC1B 4DA

DRAWING INFORMATION

DRAWING TITLE ELECTRICAL SERVICES
MEZZANINE LEVEL
LIGHTING LAYOUT

| | | | |
|-------------|---------------------|---|-----------|
| DESIGNED BY | KR | DATE | Sept 2022 |
| DRAWN BY | MZ | KJT JOB No. | |
| SCALE | 1:100 @ A1 | L3221 | |
| JOB CODE | L3221 | ORIGIN-VOL-LEVEL-TYPE-ROLE-CLASS NUMBER | SUIT-REV |
| | KJT-01-MZ-DR-E-6301 | | S4-P03 |



- ceiling to match
existing ceiling in
surrounding
ceilings
re-used
spaces)
- D1E TP&N DISTRIBUTION BOARD
SURFACE MOUNTED ON ROD OR CONTAINMENT LED
CIRCULAR WHITE DALI LUMINAIRE AS WHITECROFT PORTAL
LED 22W, 2300Lm, 4000K LED.
- D2E RECESSED IP44 LED DALI CIRCULAR WHITE DOWNLIGHTER AS
WHITECROFT MIRAGE3 C165 LED 16W, 2010Lm, 4000K LED.
WITH CLEAR GLASS COVER, SEMI SPECULAR OPTIC
E - DENOTES COMPLETE WITH 3 HOUR DURATION
EMERGENCY BATTERY PACK. OR THORN LIGHTING
EQUIVALENT
- D3S RECESSED SQUARE ARCHITECTURAL ADJUSTABLE GIMBAL
DOWNLIGHT WITH HIGH OUTPUT LED AND REMOTE DALI
DRIVER. 8W 1055Lm FOR EACH. S - DENOTES SINGLE SPOT, D
- DENOTES DOUBLE SPOT. AS WHITECROFT MINION OR
EQUIVALENT FROM THORN LIGHTING.
- E1E CEILING RECESSED NON-MAINTAINED EMERGENCY
LUMINAIRE AS ZUMTOBEL RESCLITE PRO MINI ESCAPE HIGH
OUTPUT OR WHITECROFT FLORIN E3
- E1A CEILING RECESSED NON-MAINTAINED EMERGENCY
LUMINAIRE AS ZUMTOBEL RESCLITE PRO MINI ANTI PANIC
HIGH OUTPUT OR WHITECROFT FLORIN E3
- E2E CEILING SURFACE MOUNTED NON-MAINTAINED EMERGENCY
LUMINAIRE AS ZUMTOBEL RESCLITE PRO MINI ESCAPE HIGH
OUTPUT OR WHITECROFT FLORIN E3
- E2A CEILING SURFACE MOUNTED NON-MAINTAINED EMERGENCY
LUMINAIRE AS ZUMTOBEL RESCLITE PRO MINI ANTI-PANIC
HIGH OUTPUT OR WHITECROFT FLORIN E3
- E2S CEILING SURFACE MOUNTED NON-MAINTAINED EMERGENCY
LUMINAIRE AS ZUMTOBEL RESCLITE PRO MINI SPOT OR
WHITECROFT FLORIN E3
- EX1 SURFACE WALL MOUNTED ABOVE DOOR SINGLE SIDED
MAINTAINED OPERATION EMERGENCY ESCAPE SIGN AS
ZUMTOBEL ONLITE ARTSIGN OR EQUIVALENT. ARROW
DENOTES DIRECTION OF TRAVEL, AHEAD, LEFT, RIGHT, DOWN.
- EX2S CEILING SURFACE MOUNTED SINGLE/DOUBLE SIDED
MAINTAINED OPERATION EMERGENCY ESCAPE SIGN AS
ZUMTOBEL ONLITE PURESIGN S-SINGLE SIDE, D- DOUBLE
SIDE. ARROW DENOTES DIRECTION OF TRAVEL, AHEAD, LEFT,
RIGHT, DOWN.
- EX3S CEILING RECESSED SINGLE/DOUBLE SIDED MAINTAINED
OPERATION EMERGENCY ESCAPE SIGN AS ZUMTOBEL ONLITE
PURESIGN S-SINGLE SIDE, D- DOUBLE SIDE. ARROW DENOTES
DIRECTION OF TRAVEL, AHEAD, LEFT, RIGHT, DOWN.
- EX3D
- L1 SUSPENDED ARCHITECTURAL LINEAR PENDANT LED
ALUMINIUM PROFILE LUMINAIRE. 1250mm LENGTH WITH
SUSPENSION KIT 24.6W, 2875Lm POD LED OPTIC. DIRECT
LIGHT DISTRIBUTION ONLY. AS WHITECROFT AVENUE METRO
SUSPENDED VITALITY OR EQUIVALENT FROM THORN
LIGHTING.
- L1R RECESSED ARCHITECTURAL LINEAR LED ALUMINIUM PROFILE
LUMINAIRE. 1250mm LENGTH WITH RECESSING KIT
24.6W, 2875Lm POD LED OPTIC DALI. DIRECT LIGHT
DISTRIBUTION ONLY. AS WHITECROFT AVENUE METRO
RECESSED VITALITY OR EQUIVALENT FROM THORN
LIGHTING.
- L2 1200mm SURFACE ARCHITECTURAL LINEAR LED DALI
LUMINAIRE WITH OPAL DIFFUSER. 4200Lm 29W 4000K LED. AS
WHITECROFT STILETTO LED OR EQUIVALENT FROM THORN
LIGHTING
- L3 1200mm SURFACE IP64 LINEAR LED DALI LUMINAIRE WITH
DIFFUSER. 6425Lm 46W 4000K LED. AS WHITECROFT ACL
INDUSTRY OR EQUIVALENT FROM THORN LIGHTING. E -
DENOTES INTEGRAL 3 HOUR DURATION EMERGENCY
BATTERY PACK
- L3E
- M1 CEILING RECESSED MODULAR IP54 RATED LED DALI
LUMINAIRE WITH TP(a) DIFFUSER WITH SMOOTH OUTER FACE
FOR CLEANING. 33W, 3290Lm, 4000K LED. LUMINAIRE AS
WHITECROFT HYGIENE OR EQUIVALENT FROM THORN
LIGHTING. E - DENOTES INTEGRAL 3 HOUR DURATION
EMERGENCY BATTERY PACK
- M1E
- P1 EXISTING OR NEW (SEE NOTES) DALI 35W 2700LM 3000K LED
TRACK MOUNTED PENDANT LUMINAIRE C/W TRACK ADAPTOR
WITH INTEGRAL DALI DRIVER STORED FROM STRIP OUT
PHASE OF OTHER FLOORS AND REINSTALLED IN NEW
LOCATION SHOWN. LUMINAIRES TO BE CLEANED, TESTED AND
RECONNECTED TO TRACK. AS ORLIGHT CYMBAL.
- R1 RECESSED MODULAR 1200X300mm LUMINAIRE 4000Lm 32W
LED WITH HEXAPRISM DIFFUSER. AS WHITECROFT CITYLINE
ADDED
- T1 EXISTING OR NEW (SEE NOTES) SURFACE SUSPENDED TRACK
SYSTEM STORED FROM STRIP OUT PHASE OF OTHER FLOORS
AND REINSTALLED IN NEW LOCATION COMPLETE WITH END
FEED UNIT AND SUPPORTS ETC. TRACK TO BE TESTED AND
REINSTALLED IN NEW LOCATIONS SHOWN. ALLOW FOR
REPLACEMENT SUPPORTS/BRAKETS AS REQUIRED.
AS ORLIGHT ORLTL TRACK SYSTEM.
- TA1 LED TAPE WITH OPAL COVER & DALI DRIVER MOUNTED TO
REAR OF MIRRORS & WC SHADOW GAP IN TOILETS. FINAL
REQUIREMENTS TO BE AGREED WITH ARCHITECT.
- PD LIGHTING CONTROL MULTI-PURPOSE DALI NETWORKED
PIR (PRESENCE OR ABSENCE) & PHOTOCCELL SENSOR.
DL-DAYLIGHT SENSOR ONLY. SURFACE/SUSPENDED ON
ROD OR CEILING RECESSED TO SUIT CEILING TYPE
- MC 13AMP UNSWITCHED FUSED CONNECTION UNIT
- N 2 WAY CENTRE RETRACTABLE LIGHT SWITCH *N DENOTES
NUMBER OF GANGS
- EM EMERGENCY TEST KEY SWITCH
- EXISTING LIGHTING TO BE RETAINED AND PROTECTED
DURING THE REFURBISHMENT WORKS. EXISTING CORE
LIGHTING TO REMAIN OPERATIONAL AT ALL TIMES.
ALLOW FOR ALTERING EXISTING CIRCUITING TO
PROVIDE TEMPORARY SUPPLIES TO LIGHTING IN THESE
AREAS DURING THE REPLACEMENT OF ANY
DISTRIBUTION BOARDS THAT EFFECT THESE AREAS.

| | | | | |
|----------|------------|---|-----|-----|
| S4 - P04 | 20/02/2023 | LBC ISSUE | KR | SH |
| S4 - P04 | 14/02/2023 | MINOR ADDS/CHANGES TO EMERG LIGHTING ADDED AS CLOUDED. | KR | SH |
| S4 - P03 | 07/11/2022 | TENDER ISSUE CEILING & LIGHTING AMENDED IN OFFICE SPACES. | KR | SH |
| S4 - P02 | 28/10/2022 | TENDER ISSUE DISTRIBUTION BOARDS/NOTES ADDED | KR | SH |
| S2 - P01 | 30/09/2022 | INFORMATION ISSUE | KR | SH |
| SUIT-REV | DATE | DESCRIPTION | DRN | CHK |
| STATUS | | | | |

FOR INFORMATION

THIS DRAWING IS COPYRIGHT. DO NOT SCALE FROM DRAWING.
THE CONTRACTOR AND THEIR SUB-CONTRACTORS ARE TO VERIFY ALL DIMENSIONS
ON SITE BEFORE MAKING SHOP DRAWINGS OR COMMENCING MANUFACTURE.

KJ TAIT
ENGINEERS

1 Fitzroy Square
London W1T 5HT
T +44 (0) 207 585 0952
E london@kjtaill.com
W www.kjtaill.com

PROJECT INFORMATION

CLIENT OXFORD VICTORIA HOUSE
PROJECT DEVELOPMENT LTD
LONDON, WC1B 4DA

DRAWING INFORMATION

DRAWING TITLE ELECTRICAL SERVICES
UPPER GROUND FLOOR
LIGHTING LAYOUT SHEET 1 of 2

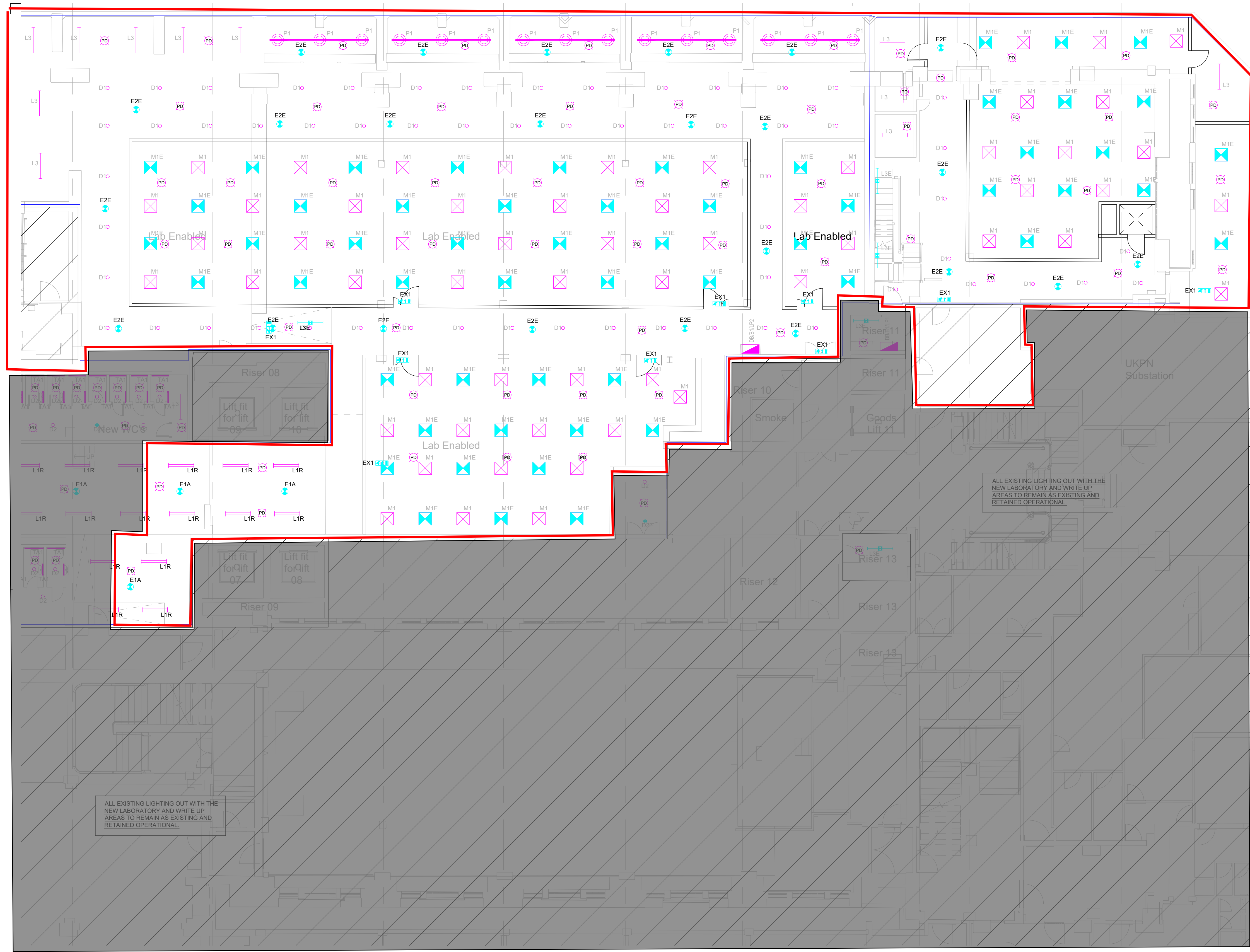
DESIGNED BY KR DATE Sept 2022

DRAWN BY MZ KJT JOB No.

SCALE 1:100 @ A1 L3221

JOB CODE L3221 ORIGIN-VOL-LEVEL-TYPE-ROLE-CLASS NUMBER SUIT-REV S4-P04

THE LIGHTING LAYOUT DRAWN SHOWS THE
LIGHTING TO THE FULLY FITTED OUT LAB
ENABLED SPACES. TEMPORARY SACRIFICIAL
LIGHTING SHALL BE INSTALLED TO PROVIDE
MINIMUM CIRCULATION ILLUMINATION AS
PART OF THE SHELL WORKS.



- Legend**
- D10** TP&N DISTRIBUTION BOARD
SURFACE MOUNTED ON ROD OR CONTAINMENT LED CIRCULAR WHITE DALI LUMINAIRE AS WHITECROFT PORTAL LED 22W, 2300lm, 4000K LED.
- D2E** RECESSED IP44 LED DALI CIRCULAR WHITE DOWNLIGHTER AS WHITECROFT MIRAGE3 C165 LED 18W, 2010LM, 4000K LED. WITH CLEAR GLASS COVER. SEMI SPECULAR OPTIC
E - DENOTES COMPLETE WITH 3 HOUR DURATION EMERGENCY BATTERY PACK. OR THORN LIGHTING EQUIVALENT
- D3S** RECESSED SQUARE ARCHITECTURAL ADJUSTABLE GIMBAL DOWNLIGHT WITH HIGH OUTPUT LED AND REMOTE DALI DRIVER. 8W 1055lm FOR EACH. S - DENOTES SINGLE SPOT, D - DENOTES DOUBLE SPOT. AS WHITECROFT MINION OR EQUIVALENT FROM THORN LIGHTING.
- E1E** CEILING RECESSED NON-MAINTAINED EMERGENCY LUMINAIRE AS ZUMTOBEL RESCUTE PRO MINI ESCAPE HIGH OUTPUT OR WHITECROFT FLORIN E3
- E1A** CEILING RECESSED NON-MAINTAINED EMERGENCY LUMINAIRE AS ZUMTOBEL RESCUTE PRO MINI ANTI-PANIC HIGH OUTPUT OR WHITECROFT FLORIN E3
- E2E** CEILING SURFACE MOUNTED NON-MAINTAINED EMERGENCY LUMINAIRE AS ZUMTOBEL RESCUTE PRO MINI ESCAPE HIGH OUTPUT OR WHITECROFT FLORIN E3
- E2A** CEILING SURFACE MOUNTED NON-MAINTAINED EMERGENCY LUMINAIRE AS ZUMTOBEL RESCUTE PRO MINI ANTI-PANIC HIGH OUTPUT OR WHITECROFT FLORIN E3
- E2S** CEILING SURFACE MOUNTED NON-MAINTAINED EMERGENCY LUMINAIRE AS ZUMTOBEL RESCUTE PRO MINI SPOT OR WHITECROFT FLORIN E3
- EX1** SURFACE WALL MOUNTED ABOVE DOOR SINGLE SIDED MAINTAINED OPERATION EMERGENCY ESCAPE SIGN AS ZUMTOBEL ONLITE ARTSIGN OR EQUIVALENT. ARROW DENOTES DIRECTION OF TRAVEL, AHEAD, LEFT, RIGHT, DOWN.
- EX2S** CEILING SURFACE MOUNTED SINGLE/DOUBLE SIDED MAINTAINED OPERATION EMERGENCY ESCAPE SIGN AS ZUMTOBEL ONLITE PURESIGN S-SINGLE SIDE, D- DOUBLE SIDE. ARROW DENOTES DIRECTION OF TRAVEL, AHEAD, LEFT, RIGHT, DOWN.
- EX3S** CEILING RECESSED SINGLE/DOUBLE SIDED MAINTAINED OPERATION EMERGENCY ESCAPE SIGN AS ZUMTOBEL ONLITE PURESIGN S-SINGLE SIDE, D- DOUBLE SIDE. ARROW DENOTES DIRECTION OF TRAVEL, AHEAD, LEFT, RIGHT, DOWN.
- L1** SUSPENDED ARCHITECTURAL LINEAR PENDANT LED ALUMINIUM PROFILE LUMINAIRE 1250mm LENGTH WITH SUSPENSION KIT 24.6W, 2875lm POD LED OPTIC. DIRECT LIGHT DISTRIBUTION ONLY. AS WHITECROFT AVENUE METRO SUSPENDED VITALITY OR EQUIVALENT FROM THORN LIGHTING.
- L1R** RECESSED ARCHITECTURAL LINEAR LED ALUMINIUM PROFILE LUMINAIRE 1250mm LENGTH WITH RECESSING KIT 24.6W, 2875lm POD LED OPTIC DALI. DIRECT LIGHT DISTRIBUTION ONLY. AS WHITECROFT AVENUE METRO SUSPENDED VITALITY OR EQUIVALENT FROM THORN LIGHTING.
- L2** 1200mm SURFACE ARCHITECTURAL LINEAR LED DALI LUMINAIRE WITH OPAL DIFFUSER. 4200lm 29W 4000K LED. AS WHITECROFT STILETTO LED OR EQUIVALENT FROM THORN LIGHTING
- L3** 1200mm SURFACE IP66 LINEAR LED DALI LUMINAIRE WITH DIFFUSER. 6425lm 48W 4000K LED. AS WHITECROFT ACL INDUSTRY OR EQUIVALENT FROM THORN LIGHTING. E - DENOTES INTEGRAL 3 HOUR DURATION EMERGENCY BATTERY PACK
- M1** CEILING RECESSED MODULAR IP54 RATED LED DALI LUMINAIRE WITH TP(a) DIFFUSER WITH SMOOTH OUTER FACE FOR CLEANING. 33W, 3290lm, 4000K LED. LUMINAIRE AS WHITECROFT HYGIENE OR EQUIVALENT FROM THORN LIGHTING. E - DENOTES INTEGRAL 3 HOUR DURATION EMERGENCY BATTERY PACK
- P1** EXISTING OR NEW (SEE NOTES) DALI 35W 2700LM 3000K LED TRACK MOUNTED PENDANT LUMINAIRE C/W TRACK ADAPTOR WITH INTEGRAL DALI DRIVER STORED FROM STRIP OUT PHASE OF OTHER FLOORS AND REINSTALLED IN NEW LOCATION SHOWN. LUMINAIRES TO BE CLEANED, TESTED AND RECONNECTED TO TRACK. AS ORLIGHT CYMBAL.
- T1** EXISTING OR NEW (SEE NOTES) SURFACE SUSPENDED TRACK SYSTEM STORED FROM STRIP OUT PHASE OF OTHER FLOORS AND REINSTALLED IN NEW LOCATION COMPLETE WITH END FEED UNIT AND SUPPORTS ETC. TRACK TO BE TESTED AND REINSTALLED IN NEW LOCATIONS SHOWN. ALLOW FOR REPLACEMENT SUPPORTS/BRAKETS AS REQUIRED. AS ORLIGHT ORLTL TRACK SYSTEM.
- TA1** LED TAPE WITH OPAL COVER & DALI DRIVER MOUNTED TO REAR OF MIRRORS & WC SHADOW GAP IN TOILETS. FINAL REQUIREMENTS TO BE AGREED WITH ARCHITECT.
- PO** LIGHTING CONTROL MULTI-PURPOSE DALI NETWORKED PIR (PRESENCE OR ABSENCE) & PHOTOCELL SENSOR. DL-DAYLIGHT SENSOR ONLY. SURFACE/SUSPENDED ON ROD OR CEILING RECESSED TO SUIT CEILING TYPE
- MC** 13AMP UNSWITCHED FUSED CONNECTION UNIT
- N** 2 WAY CENTRE RETRACTIVE LIGHT SWITCH 'N' DENOTES NUMBER OF GANGS
- EM** EMERGENCY TEST KEY SWITCH
- EXISTING LIGHTING TO BE RETAINED AND PROTECTED DURING THE REFURBISHMENT WORKS. EXISTING CORE LIGHTING TO REMAIN OPERATIONAL AT ALL TIMES. ALLOW FOR ALTERING EXISTING CIRCUITING TO PROVIDE TEMPORARY SUPPLIES TO LIGHTING IN THESE AREAS DURING THE REPLACEMENT OF ANY DISTRIBUTION BOARDS THAT EFFECT THESE AREAS.

THE LIGHTING LAYOUT DRAWN SHOWS THE LIGHTING TO THE FULLY FITTED OUT LAB ENABLED SPACES. TEMPORARY SACRIFICIAL LIGHTING SHALL BE INSTALLED TO PROVIDE MINIMUM CIRCULATION ILLUMINATION AS PART OF THE SHELL WORKS.

| | | | | |
|----------|------------|--|-----|-----|
| S4 - P03 | 20/02/2023 | LBC ISSUE | KR | SH |
| S4 - P03 | 14/02/2023 | MINOR ADDS/CHANGES TO EMERG LIGHTING ADDED AS CLOUDED. | KR | SH |
| S4 - P02 | 28/10/2022 | TENDER ISSUE DISTRIBUTION BOARDS/NOTES ADDED | KR | SH |
| S2 - P01 | 30/09/2022 | INFORMATION ISSUE | KR | SH |
| SUIT-REV | DATE | DESCRIPTION | DRN | CHK |
| STATUS | | | | |

FOR INFORMATION

THIS DRAWING IS COPYRIGHT. DO NOT SCALE FROM DRAWING. THE CONTRACTOR AND THEIR SUB-CONTRACTORS ARE TO VERIFY ALL DIMENSIONS ON SITE BEFORE MAKING SHOP DRAWINGS OR COMMENCING MANUFACTURE.

KJ TAIT

ENGINEERS

1 Fitzroy Square
London W1T 5HF
T +44 (0) 207 388 0952
E london@kjtait.com
W www.kjtait.com

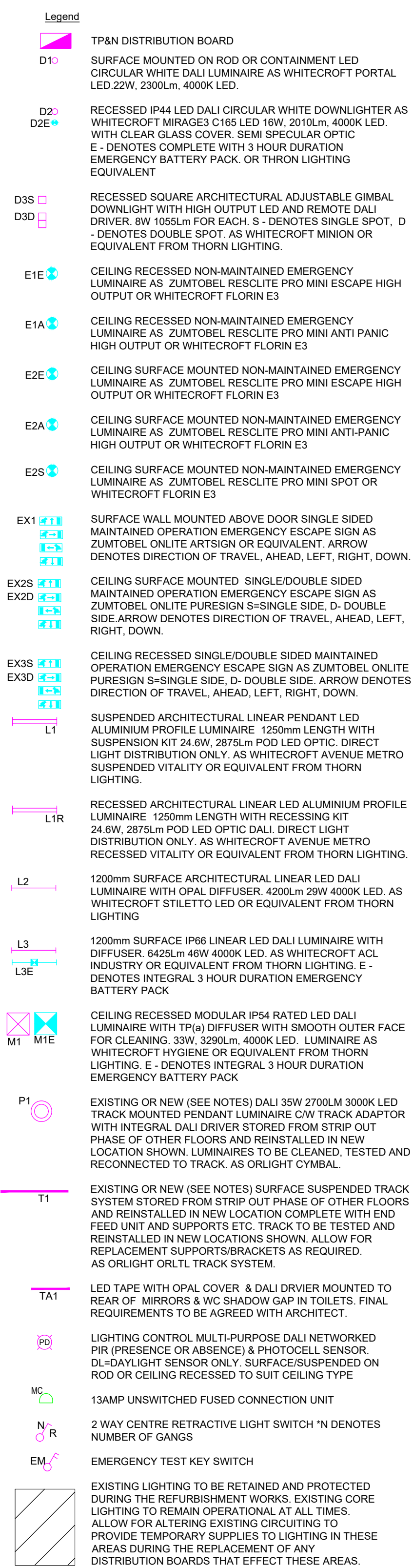
PROJECT INFORMATION

CLIENT OXFORD VICTORIA HOUSE DEVELOPMENT LTD
PROJECT LONDON, WC1B 4DA

DRAWING INFORMATION

DRAWING TITLE ELECTRICAL SERVICES BASEMENT LEVEL 1 LIGHTING LAYOUT SHEET 2 of 2

| | |
|------------------|---|
| DESIGNED BY KR | DATE Sept 2022 |
| DRAWN BY MZ | KJT JOB No. |
| SCALE 1:100 @ A1 | L3221 |
| JOB CODE L3221 | ORIGIN-VOL-LEVEL-TYPE-ROLE-CLASS NUMBER KJT-02-B1-DR-E-6301 |
| SUIT-REV S4-P03 | |



THE LIGHTING LAYOUT DRAWN SHOWS THE LIGHTING TO THE FULLY FITTED OUT LAB ENABLED SPACES. TEMPORARY SACRIFICIAL LIGHTING SHALL BE INSTALLED TO PROVIDE MINIMUM CIRCULATION ILLUMINATION AS PART OF THE SHELL WORKS.

| | | | | |
|-----------|------------|--|-----|-----|
| S4 - P03 | 20/02/2023 | LBC ISSUE | KR | SH |
| S4 - P03 | 14/02/2023 | MINOR ADDS/CHANGES TO EMERG LIGHTING ADDED AS CLOUDED. | KR | SH |
| S4 - P02 | 28/10/2022 | TENDER ISSUE | KR | SH |
| S2 - P01 | 30/09/2022 | INFORMATION ISSUE | KR | SH |
| SUIT- REV | DATE | DESCRIPTION | DRN | CHK |
| STATUS | | | | |

FOR INFORMATION

THIS DRAWING IS COPYRIGHT. DO NOT SCALE FROM DRAWING.
THE CONTRACTOR AND THEIR SUB-CONTRACTORS ARE TO VERIFY ALL DIMENSIONS
ON SITE BEFORE MAKING SHOP DRAWINGS OR COMMENCING MANUFACTURE.

KJ TAIT
ENGINEERS

1 Fitzroy Square
London W1T 5HF
T +44 (0) 207 388 0952
E london@kjtaik.com
W www.kjtaik.com

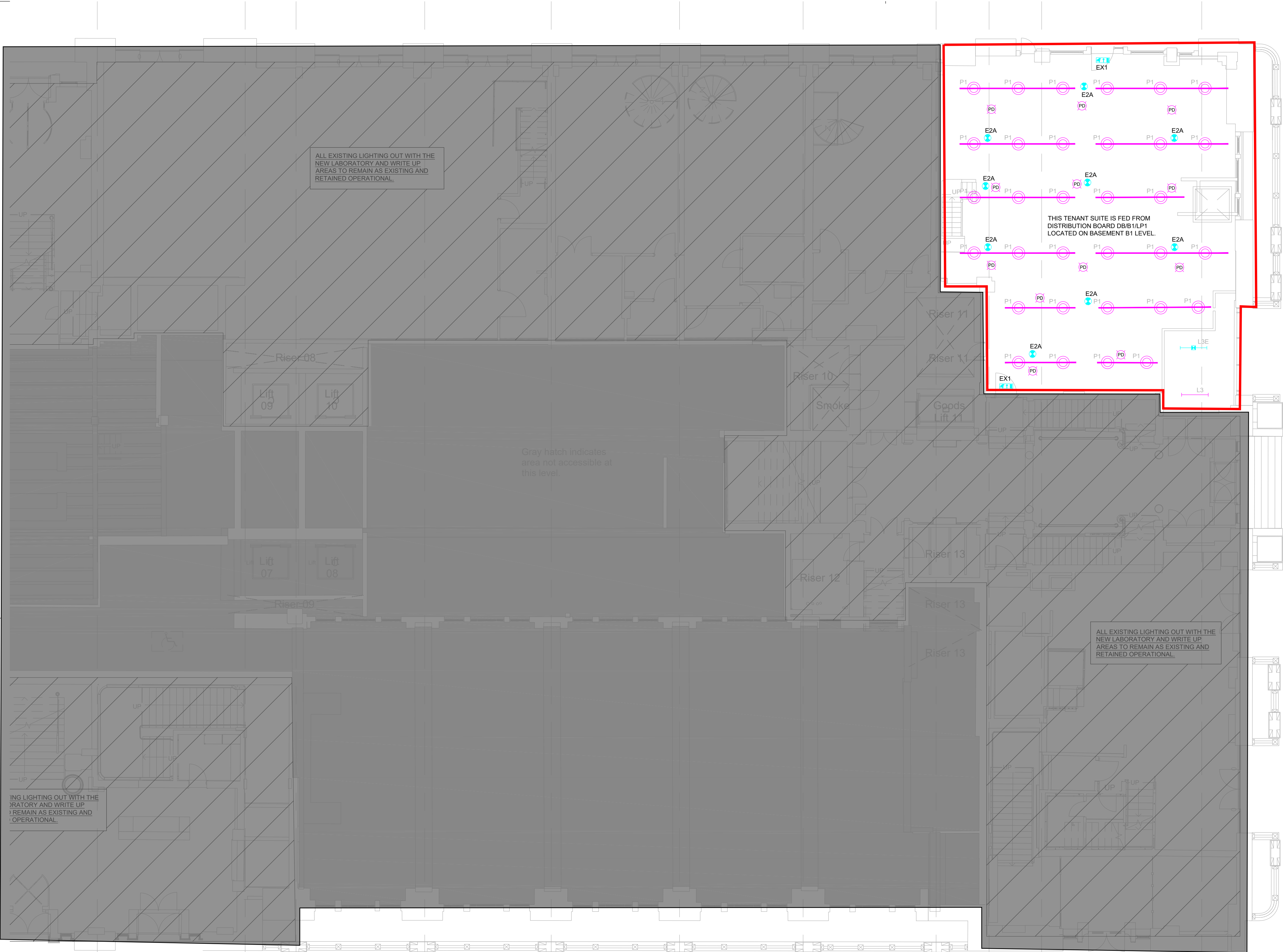
PROJECT INFORMATION

| | |
|---------|-------------------------------------|
| CLIENT | OXFORD VICTORIA HOUSE |
| PROJECT | DEVELOPMENT LTD LONDON, WC1B 4DA |

DRAWING INFORMATION

DRAWING TITLE **ELECTRICAL SERVICES
BASEMENT LEVEL 2
LIGHTING LAYOUT**

| | | | |
|-------------------|--|-------------|--------------------|
| DESIGNED BY | KR | DATE | Sept 2022 |
| DRAWN BY | MZ | KJT JOB No. | L3221 |
| SCALE | 1:100 @ A1 | | |
| JOB CODE L3221 | ORIGIN-VOL-LEVEL-TYPE-ROLE-CLASS NUMBER KJT-02-B2-DR-E-6301 | | SUIT-REV S4-P03 |



- Legend**
- TP&N DISTRIBUTION BOARD
 - D10 SURFACE MOUNTED ON ROD OR CONTAINMENT LED CIRCULAR WHITE DALI LUMINAIRE AS WHITECROFT PORTAL LED.22W, 2300Lm, 4000K LED.
 - D20 RECESSED IP44 LED DALI CIRCULAR WHITE DOWNLIGHTER AS WHITECROFT MIRAGE3 C165 LED 16W, 2010Lm, 4000K LED. WITH CLEAR GLASS COVER, SEMI SPECULAR OPTIC
 - D2E E - DENOTES COMPLETE WITH 3 HOUR DURATION EMERGENCY BATTERY PACK. OR THORN LIGHTING EQUIVALENT
 - D3S RECESSED SQUARE ARCHITECTURAL ADJUSTABLE GIMBAL DOWNLIGHT WITH HIGH OUTPUT LED AND REMOTE DALI DRIVER. 8W 1055Lm FOR EACH. S - DENOTES SINGLE SPOT, D - DENOTES DOUBLE SPOT. AS WHITECROFT MINION OR EQUIVALENT FROM THORN LIGHTING.
 - E1E CEILING RECESSED NON-MAINTAINED EMERGENCY LUMINAIRE AS ZUMTOBEL RESCLITE PRO MINI ESCAPE HIGH OUTPUT OR WHITECROFT FLORIN E3
 - E1A CEILING RECESSED NON-MAINTAINED EMERGENCY LUMINAIRE AS ZUMTOBEL RESCLITE PRO MINI ANTI PANIC HIGH OUTPUT OR WHITECROFT FLORIN E3
 - E2E CEILING SURFACE MOUNTED NON-MAINTAINED EMERGENCY LUMINAIRE AS ZUMTOBEL RESCLITE PRO MINI ESCAPE HIGH OUTPUT OR WHITECROFT FLORIN E3
 - E2A CEILING SURFACE MOUNTED NON-MAINTAINED EMERGENCY LUMINAIRE AS ZUMTOBEL RESCLITE PRO MINI ANTI-PANIC HIGH OUTPUT OR WHITECROFT FLORIN E3
 - E2S CEILING SURFACE MOUNTED NON-MAINTAINED EMERGENCY LUMINAIRE AS ZUMTOBEL RESCLITE PRO MINI SPOT OR WHITECROFT FLORIN E3
 - EX1 MAINTAINED OPERATION EMERGENCY ESCAPE SIGN AS ZUMTOBEL ONLITE ARTSIGN OR EQUIVALENT. ARROW DENOTES DIRECTION OF TRAVEL, AHEAD, LEFT, RIGHT, DOWN.
 - EX2S CEILING SURFACE MOUNTED SINGLE/DOUBLE SIDED MAINTAINED OPERATION EMERGENCY ESCAPE SIGN AS ZUMTOBEL ONLITE PURESIGN S= SINGLE SIDE, D- DOUBLE SIDE. ARROW DENOTES DIRECTION OF TRAVEL, AHEAD, LEFT, RIGHT, DOWN.
 - EX3S CEILING RECESSED SINGLE/DOUBLE SIDED MAINTAINED OPERATION EMERGENCY ESCAPE SIGN AS ZUMTOBEL ONLITE PURESIGN S= SINGLE SIDE, D- DOUBLE SIDE. ARROW DENOTES DIRECTION OF TRAVEL, AHEAD, LEFT, RIGHT, DOWN.
 - L1 SUSPENDED ARCHITECTURAL LINEAR PENDANT LED ALUMINUM PROFILE LUMINAIRE. 1250mm LENGTH WITH SUSPENSION KIT 24.6W, 2875Lm POD LED OPTIC. DIRECT LIGHT DISTRIBUTION ONLY. AS WHITECROFT AVENUE METRO SUSPENDED VITALITY OR EQUIVALENT FROM THORN LIGHTING.
 - L1R RECESSED ARCHITECTURAL LINEAR LED ALUMINUM PROFILE LUMINAIRE. 1250mm LENGTH WITH RECESSING KIT 24.6W, 2875Lm POD LED OPTIC DALI. DIRECT LIGHT DISTRIBUTION ONLY. AS WHITECROFT AVENUE METRO RECESSED VITALITY OR EQUIVALENT FROM THORN LIGHTING.
 - L2 1200mm SURFACE ARCHITECTURAL LINEAR LED DALI LUMINAIRE WITH OPAL DIFFUSER. 4200Lm 29W 4000K LED. AS WHITECROFT STILETTO LED OR EQUIVALENT FROM THORN LIGHTING
 - L3 1200mm SURFACE IP66 LINEAR LED DALI LUMINAIRE WITH DIFFUSER. 6425Lm 46W 4000K LED. AS WHITECROFT ACL INDUSTRY OR EQUIVALENT FROM THORN LIGHTING. E - DENOTES INTEGRAL 3 HOUR DURATION EMERGENCY BATTERY PACK
 - L3E 1200mm SURFACE IP66 ATEX ZONE 2 RATED LINEAR LED DALI LUMINAIRE WITH DIFFUSER. 4200Lm 40W 4000K LED. AS WHITECROFT ACLN OR EQUIVALENT FROM THORN LIGHTING. E - DENOTES INTEGRAL 3 HOUR DURATION EMERGENCY BATTERY PACK
 - L4 1200mm SURFACE IP66 ATEX ZONE 2 RATED LINEAR LED DALI LUMINAIRE WITH DIFFUSER. 4200Lm 40W 4000K LED. AS WHITECROFT ACLN OR EQUIVALENT FROM THORN LIGHTING. E - DENOTES INTEGRAL 3 HOUR DURATION EMERGENCY BATTERY PACK
 - L4E 1200mm SURFACE IP66 ATEX ZONE 2 RATED LINEAR LED DALI LUMINAIRE WITH DIFFUSER. 4200Lm 40W 4000K LED. AS WHITECROFT ACLN OR EQUIVALENT FROM THORN LIGHTING. E - DENOTES INTEGRAL 3 HOUR DURATION EMERGENCY BATTERY PACK
 - P1 CEILING RECESSED MODULAR IP54 RATED LED DALI LUMINAIRE WITH TP(a) DIFFUSER WITH SMOOTH OUTER FACE FOR CLEANING. 33W, 3290Lm, 4000K LED. LUMINAIRE AS WHITECROFT HYGIENE OR EQUIVALENT FROM THORN LIGHTING. E - DENOTES INTEGRAL 3 HOUR DURATION EMERGENCY BATTERY PACK
 - T1 EXISTING OR NEW (SEE NOTES) DALI 35W 2700LM 3000K LED TRACK MOUNTED PENDANT LUMINAIRE C/W TRACK ADAPTOR WITH INTEGRAL DALI DRIVER STORED FROM STRIP OUT PHASE OF OTHER FLOORS AND REINSTALLED IN NEW LOCATION SHOWN. ALLOW FOR REPLACEMENT SUPPORTS/BRAKETS AS REQUIRED.
 - TA1 EXISTING OR NEW (SEE NOTES) SURFACE SUSPENDED TRACK SYSTEM STORED FROM STRIP OUT PHASE OF OTHER FLOORS AND REINSTALLED IN NEW LOCATION COMPLETE WITH END FEED UNIT AND SUPPORTS ETC. TRACK TO BE TESTED AND REINSTALLED IN NEW LOCATIONS SHOWN. ALLOW FOR REPLACEMENT SUPPORTS/BRAKETS AS REQUIRED.
 - PO PIR (PRESENCE OR ABSENCE) & PHOTOCCELL SENSOR. DESIGNED WITH SCRO/CONEX. SURFACE MOUNTED INTO REAR OF SIGNING RECESSED SIGNAGE IN NOTED. FINAL REQUIREMENTS TO BE AGREED WITH ARCHITECT. 13AMP UNSWITCHED FUSED CONNECTION UNIT
 - MC 2 WAY CENTRE RETRACTIVE LIGHT SWITCH *N DENOTES NUMBER OF GANGS
 - N 2 WAY CENTRE RETRACTIVE LIGHT SWITCH *N DENOTES NUMBER OF GANGS
 - R EMERGENCY TEST KEY SWITCH
 - EM

THE LIGHTING LAYOUT DRAWN SHOWS THE LIGHTING TO THE FULLY FITTED OUT LAB. ENABLED SPACES. TEMPORARY SACRIFICIAL LIGHTING SHALL BE INSTALLED TO PROVIDE MINIMUM CIRCULATION ILLUMINATION AS PART OF THE SHELL WORKS.

| | | | | |
|----------|------------|-------------------|-----|-----|
| S4 - P02 | 20/02/2023 | LBC ISSUE | KR | SH |
| S4 - P02 | 28/10/2022 | TENDER ISSUE | KR | SH |
| S2 - P01 | 30/09/2022 | INFORMATION ISSUE | KR | SH |
| SUIT-REV | DATE | DESCRIPTION | DRN | CHK |
| STATUS | | | | |

FOR INFORMATION

THIS DRAWING IS COPYRIGHT. DO NOT SCALE FROM DRAWING. THE CONTRACTOR AND THEIR SUB-CONTRACTORS ARE TO VERIFY ALL DIMENSIONS ON SITE BEFORE MAKING SHOP DRAWINGS OR COMMENCING MANUFACTURE.

KJ TAIT
ENGINEERS

1 Fitzroy Square
London W1T 5HF
T +44 (0) 207 385 0952
E london@kjtait.com
W www.kjtait.com

PROJECT INFORMATION

CLIENT OXFORD VICTORIA HOUSE
PROJECT DEVELOPMENT LTD
LONDON, WC1B 4DA

DRAWING INFORMATION

DRAWING TITLE ELECTRICAL SERVICES
LOWER GROUND FLOOR
LIGHTING LAYOUT SHEET 2 of 2

| | | | |
|-------------|---|-------------|-----------|
| DESIGNED BY | KR | DATE | Sept 2022 |
| DRAWN BY | MZ | KJT JOB No. | |
| SCALE | 1:100 @ A1 | L3221 | |
| JOB CODE | ORIGIN-VOL-LEVEL-TYPE-ROLE-CLASS NUMBER | SUIT-REV | |
| L3221 | KJT-02-LG-DR-E-6301 | S4-P02 | |