

LEGEND:

- 300mm SUB-MAIN CABLE TRAY
- 100mmx100mm L&P CABLE TRUNKING
- 150mm FIRE ALARM BASKET
- 100mm SEC/LV/BMS ALARM BASKET
- 300mm DATA BASKET
- 50mm FIRE ALARM BASKET
- 200mm x 50mm CABLE BASKET FOR COMMS CABLES
- BUSBAR** RISING ELECTRICAL LV POWER BUSBAR (NON-ESSENTIAL & ESSENTIAL)
- TENANT ON-FLOOR MCCB PANELBOARD
- LTG & POWER TP&N DISTRIBUTION BOARD
- LTG & POWER SP&N DISTRIBUTION BOARD
- EXISTING DISTRIBUTION TO REMAIN

NOTE THIS DRAWING INDICATES THE PRIMARY CONTAINMENT SYSTEMS ROUTES ONLY. SECONDARY CONTAINMENT INCLUDING CONDUIT ETC SHALL BE PROVIDED FROM THE PRIMARY ROUTES TO INDIVIDUAL ITEMS OF EQUIPMENT SUCH AS SMOKE DETECTORS AND LUMINAIRES AS REQUIRED.

ALL CABLING WILL BE INSTALLED ON CONTAINMENT ON PRIMARY ROUTES AND IN CONDUIT OR SURFACE CLIPPED TO DEVICES. CABLING SHALL BE CONCEALED WHERE POSSIBLE

ALL CONTAINMENT SHALL BE SUITABLY FIXED TO SOFFITS AND SUPPORTED VIA STEEL ROD AND UNISTRUT.

S4 - P03	20/02/2023	LBC ISSUE	KR	SH
S4 - P03	28/10/2022	TENDER ISSUE	SH	MT
S2 - P02	14/10/2022	STAGE 3 ISSUE	SH	MT
S2 - P01	18/03/2022	FIRST ISSUE	SH	MT
SUIT-REV	DATE	DESCRIPTION	DRN	CHK

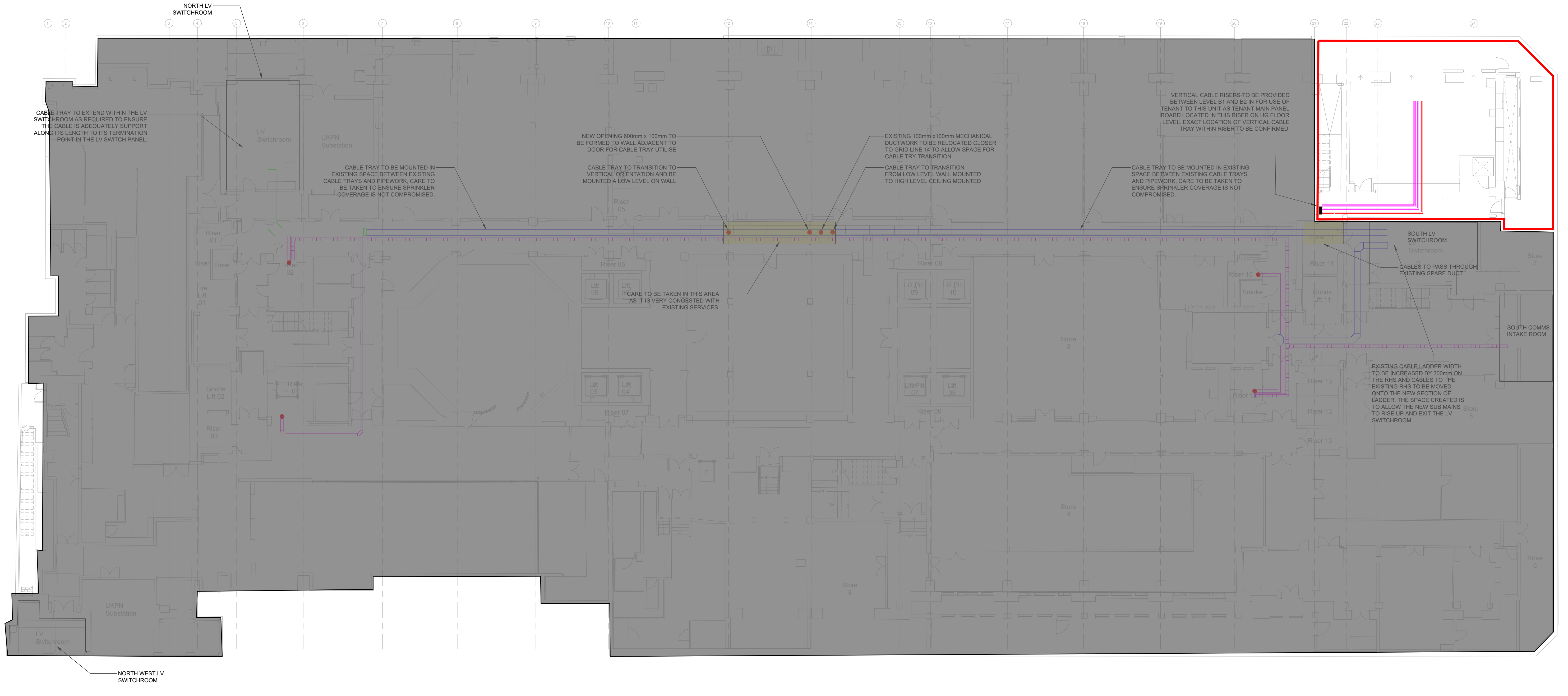
**FOR INFORMATION**

THIS DRAWING IS COPYRIGHT. DO NOT SCALE FROM DRAWING. THE CONTRACTOR AND THEIR SUB-CONTRACTORS ARE TO VERIFY ALL DIMENSIONS ON SITE BEFORE MAKING SHOP DRAWINGS OR COMMENCING MANUFACTURE.

**KJ TAIT**  
ENGINEERS

1 Fitzroy Square  
London W1T 5HF  
T +44 (0) 207 388 0952  
E london@kjtait.com  
W www.kjtait.com

PROJECT INFORMATION			
CLIENT	OXFORD VICTORIA HOUSE		
PROJECT	DEVELOPMENT LTD LONDON, WC1B 4DA		
DRAWING INFORMATION			
DRAWING TITLE	ELECTRICAL SERVICES DISTRIBUTION STRATEGY BASEMENT LEVEL 1		
DESIGNED BY	SH	DATE	MAR 2022
DRAWN BY	MZ	KJT JOB No.	
SCALE	1:150 @ A1		L3221
JOB CODE	ORIGIN-VOL-LEVEL-TYPE-ROLE-CLASS NUMBER		SUIT-REV
L3221	KJT-ZZ-B1-DR-E-6101		S4-P03



LEGEND:

- 600mm x 50mm cable tray
- 450mm x 50mm cable tray
- 200mm x 50mm cable tray
- Cable tray to cease adjacent to bottom of rising busbar to allow termination of submains into busbar end feed unit.
- 200mm x 50mm CABLE BASKET FOR COMMS CABLES
- 100mmx100mm L&P CABLE TRUNKING
- 150mm FIRE ALARM BASKET
- 100mm SEC/LV/BMS ALARM BASKET
- 300mm DATA BASKET
- 50mm FIRE ALARM BASKET
- 200mm x 50mm CABLE BASKET FOR COMMS CABLES

**BUSBAR** RISING ELECTRICAL LV POWER BUSBAR (NON-ESSENTIAL & ESSENTIAL)

- TENANT ON-FLOOR MCCB PANELBOARD
- LTG & POWER TP&N DISTRIBUTION BOARD
- LTG & POWER SP&N DISTRIBUTION BOARD
- EXISTING DISTRIBUTION TO REMAIN

NOTE THIS DRAWING INDICATES THE PRIMARY CONTAINMENT SYSTEMS ROUTES ONLY. SECONDARY CONTAINMENT INCLUDING CONDUIT ETC SHALL BE PROVIDED FROM THE PRIMARY ROUTES TO INDIVIDUAL ITEMS OF EQUIPMENT SUCH AS SMOKE DETECTORS AND LUMINAIRES AS REQUIRED.

ALL CABLING WILL BE INSTALLED ON CONTAINMENT ON PRIMARY ROUTES AND IN CONDUIT OR SURFACE CLIPPED TO DEVICES. CABLING SHALL BE CONCEALED WHERE POSSIBLE

ALL CONTAINMENT SHALL BE SUITABLY FIXED TO SOFFITS AND SUPPORTED VIA STEEL ROD AND UNISTRUT.

S4 - P03	20/02/2023	LBC ISSUE	KR	SH
S4 - P03	28/10/2022	TENDER ISSUE	SH	MT
S2 - P02	14/10/2022	STAGE 3 ISSUE	SH	MT
S2 - P01	18/03/2022	FIRST ISSUE	SH	MT
SUIT-REV	DATE	DESCRIPTION	DRN	CHK

FOR INFORMATION

THIS DRAWING IS COPYRIGHT. DO NOT SCALE FROM DRAWING. THE CONTRACTOR AND THEIR SUB-CONTRACTORS ARE TO VERIFY ALL DIMENSIONS ON SITE BEFORE MAKING SHOP DRAWINGS OR COMMENCING MANUFACTURE.

**KJ TAIT**  
ENGINEERS

1 Fitzroy Square  
London W1T 5HF  
T +44 (0) 207 388 0952  
E london@kjtait.com  
W www.kjtait.com

**PROJECT INFORMATION**

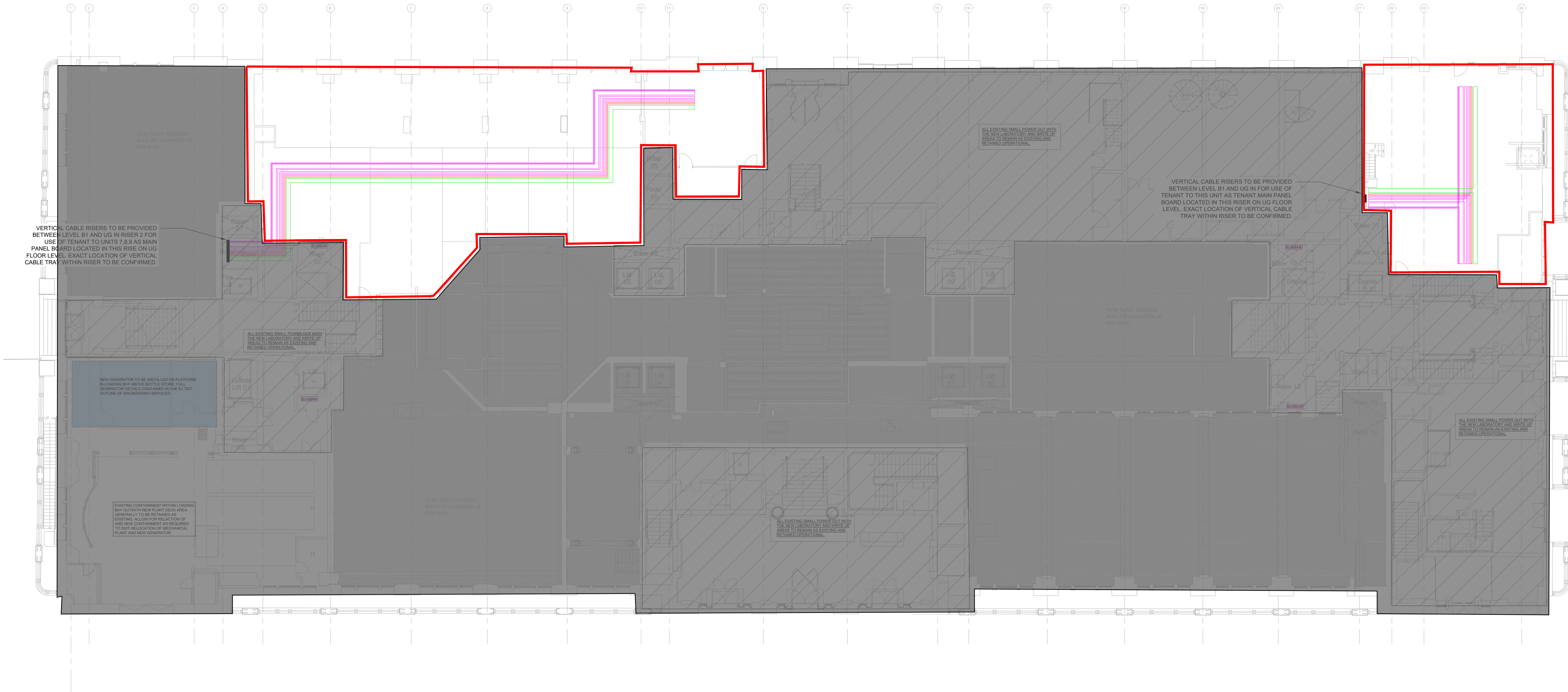
CLIENT OXFORD VICTORIA HOUSE  
PROJECT DEVELOPMENT LTD  
LONDON, WC1B 4DA

**DRAWING INFORMATION**

DRAWING TITLE ELECTRICAL SERVICES  
DISTRIBUTION STRATEGY  
BASEMENT LEVEL 2

DESIGNED BY SH	DATE MAR 2022
DRAWN BY MZ	KJT JOB No.
SCALE 1:150 @ A1	L3221
JOB CODE L3221	ORIGIN-VOL-LEVEL-TYPE-ROLE-CLASS NUMBER KJT-ZZ-B2-DR-E-6101
SUIT-REV	S4-P03





LEGEND:

- 300mm SUB-MAIN CABLE TRAY
- 100mmx100mm L&P CABLE TRUNKING
- 150mm FIRE ALARM BASKET
- 100mm SEC/LV/BMS ALARM BASKET
- 300mm DATA BASKET
- 50mm FIRE ALARM BASKET

- BUSBAR** RISING ELECTRICAL LV POWER BUSBAR (NON-ESSENTIAL & ESSENTIAL)
- TENANT ON-FLOOR MCCB PANELBOARD
- LTG & POWER TP&N DISTRIBUTION BOARD
- LTG & POWER SP&N DISTRIBUTION BOARD
- EXISTING DISTRIBUTION TO REMAIN

NOTE THIS DRAWING INDICATES THE PRIMARY CONTAINMENT SYSTEMS ROUTES ONLY. SECONDARY CONTAINMENT INCLUDING CONDUIT ETC SHALL BE PROVIDED FROM THE PRIMARY ROUTES TO INDIVIDUAL ITEMS OF EQUIPMENT SUCH AS SMOKE DETECTORS AND LUMINAIRES AS REQUIRED.

ALL CABLING WILL BE INSTALLED ON CONTAINMENT ON PRIMARY ROUTES AND IN CONDUIT OR SURFACE CLIPPED TO DEVICES. CABLING SHALL BE CONCEALED WHERE POSSIBLE.

ALL CONTAINMENT SHALL BE SUITABLY FIXED TO SOFFITS AND SUPPORTED VIA STEEL ROD AND UNISTRUT.

S4 - P02	20/02/2023	LBC ISSUE	KR	SH
S4 - P02	28/10/2022	TENDER ISSUE	SH	KR
S2 - P01	14/10/2022	STAGE 3 ISSUE	SH	KR
SUIT- REV	DATE	DESCRIPTION	DRN	CHK
STATUS				

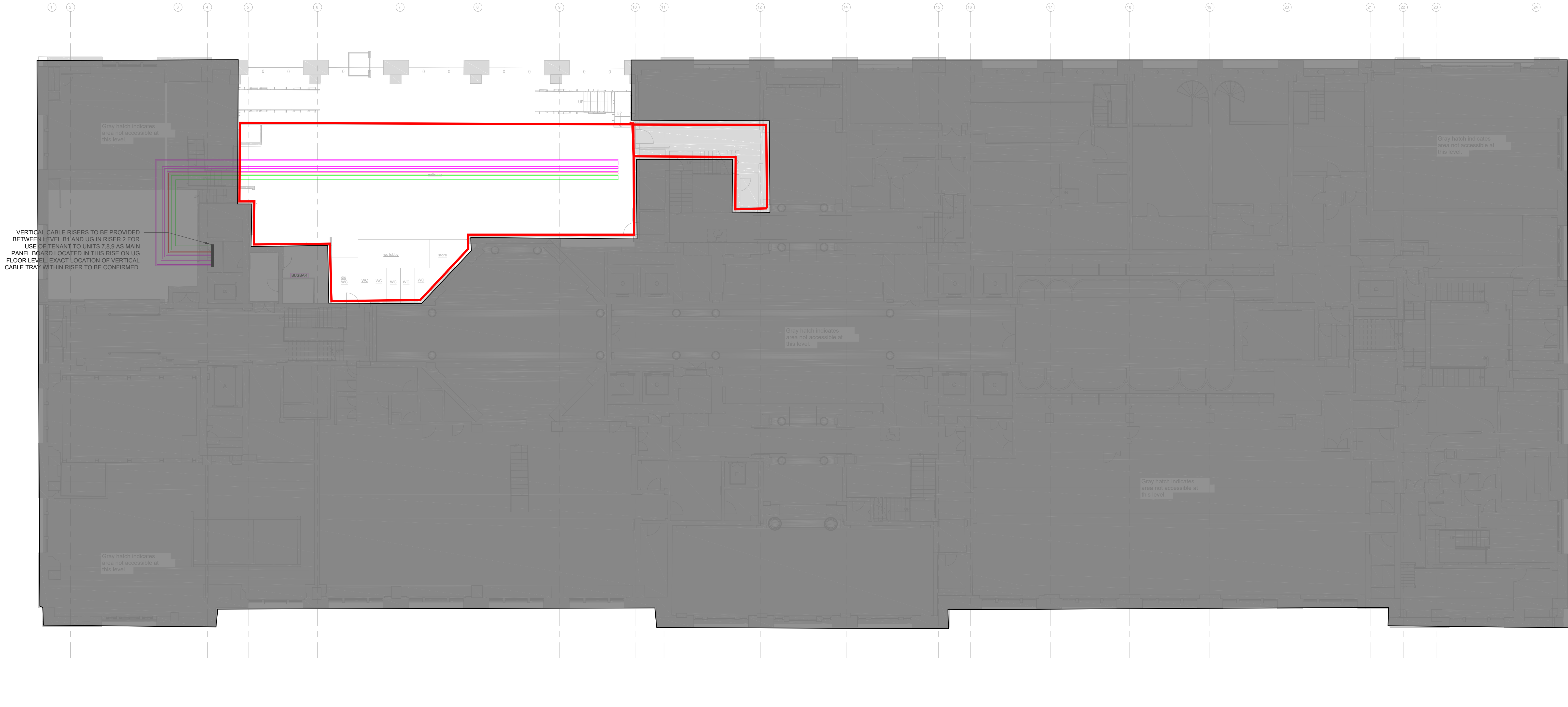
FOR INFORMATION

THIS DRAWING IS COPYRIGHT. DO NOT SCALE FROM DRAWING. THE CONTRACTOR AND THEIR SUB-CONTRACTORS ARE TO VERIFY ALL DIMENSIONS ON SITE BEFORE MAKING SHOP DRAWINGS OR COMMENCING MANUFACTURE.

**KJ TAIT**  
ENGINEERS

1 Fitzroy Square  
London W1T 5HF  
T +44 (0) 207 388 0952  
E london@kjtait.com  
W www.kjtait.com

PROJECT INFORMATION			
CLIENT	OXFORD VICTORIA HOUSE		
PROJECT	DEVELOPMENT LTD LONDON, WC1B 4DA		
DRAWING INFORMATION			
DRAWING TITLE	ELECTRICAL SERVICES LOWER GROUND FLOOR CONTAINMENT LAYOUT		
DESIGNED BY	SH	DATE	Sept 2022
DRAWN BY	TS	K/JT JOB NO.	
SCALE	1:100 @ A1	L3221	
JOB CODE	ORIGIN-VOL-LEVEL-TYPE-ROLE-CLASS NUMBER		SUIT-REV
L3221	KJT-ZZ-LG-DR-E-6101		S4-P02



LEGEND:

- 300mm SUB-MAIN CABLE TRAY
- 100mmx100mm L&P CABLE TRUNKING
- 150mm FIRE ALARM BASKET
- 100mm SEC/LV/BMS ALARM BASKET
- 300mm DATA BASKET
- 50mm FIRE ALARM BASKET

**BUSBAR** RISING ELECTRICAL LV POWER BUSBAR (NON-ESSENTIAL & ESSENTIAL)

TENANT ON-FLOOR MCCB PANELBOARD

LTG & POWER TP&N DISTRIBUTION BOARD

LTG & POWER SP&N DISTRIBUTION BOARD

EXISTING DISTRIBUTION TO REMAIN

NOTE THIS DRAWING INDICATES THE PRIMARY CONTAINMENT SYSTEMS ROUTES ONLY. SECONDARY CONTAINMENT INCLUDING CONDUIT ETC SHALL BE PROVIDED FROM THE PRIMARY ROUTES TO INDIVIDUAL ITEMS OF EQUIPMENT SUCH AS SMOKE DETECTORS AND LUMINAIRES AS REQUIRED.

ALL CABLING WILL BE INSTALLED ON CONTAINMENT ON PRIMARY ROUTES AND IN CONDUIT OR SURFACE CLIPPED TO DEVICES. CABLING SHALL BE CONCEALED WHERE POSSIBLE.

ALL CONTAINMENT SHALL BE SUITABLY FIXED TO SOFFITS AND SUPPORTED VIA STEEL ROD AND UNISTRUT.

S4 - P02	20/02/2023	LBC ISSUE	KR	SH
S4 - P02	28/10/2022	TENDER ISSUE	SH	KR
S2 - P01	14/10/2022	STAGE 3 ISSUE	SH	KR
SUIT-REV	DATE	DESCRIPTION	DRN	CHK
STATUS				

FOR INFORMATION

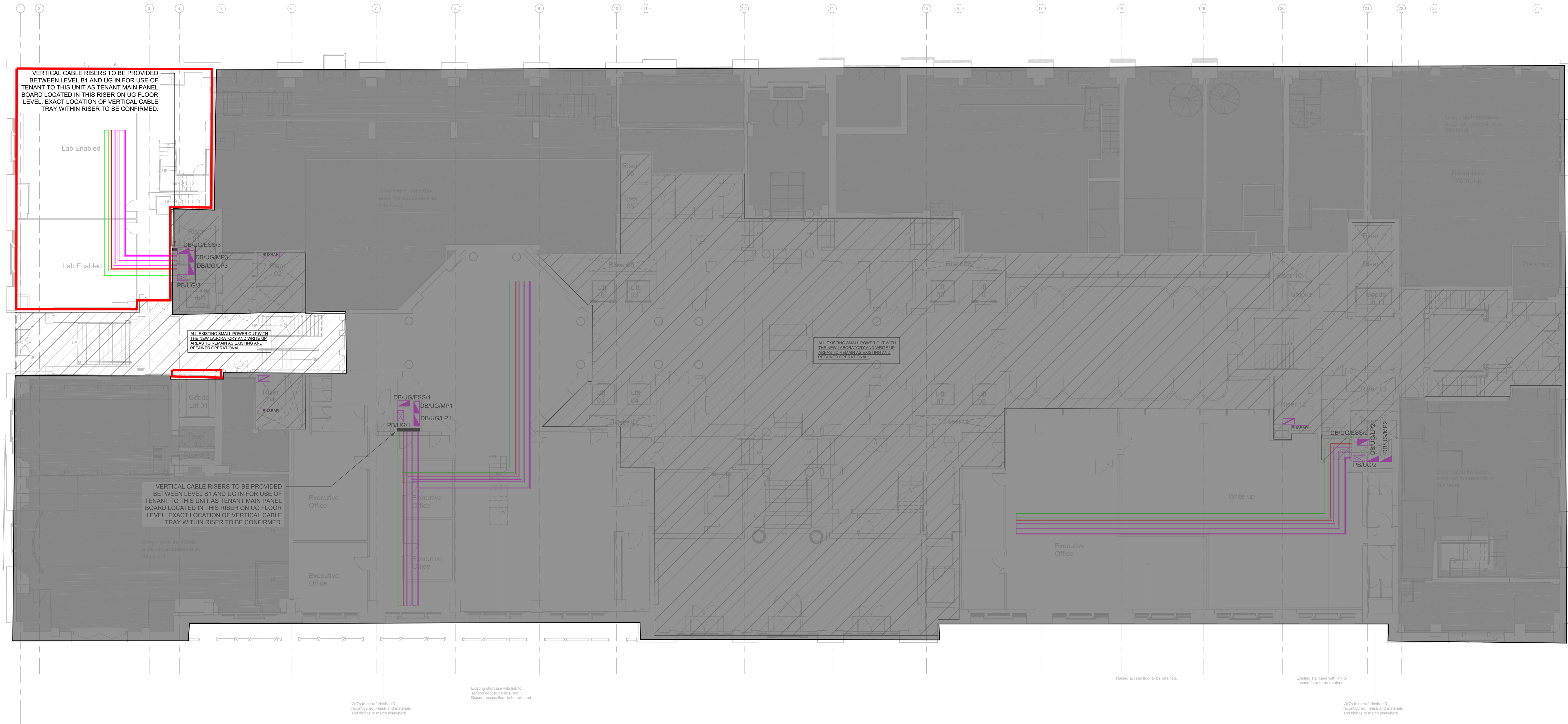
THIS DRAWING IS COPYRIGHT. DO NOT SCALE FROM DRAWING. THE CONTRACTOR AND THEIR SUB-CONTRACTORS ARE TO VERIFY ALL DIMENSIONS ON SITE BEFORE MAKING SHOP DRAWINGS OR COMMENCING MANUFACTURE.

**KJ TAIT**  
ENGINEERS

1 Fitzroy Square  
London W1T 5HF  
T +44 (0) 207 388 0952  
E london@kjtait.com  
W www.kjtait.com

PROJECT INFORMATION			
CLIENT	OXFORD VICTORIA HOUSE		
PROJECT	DEVELOPMENT LTD LONDON, WC1B 4DA		
DRAWING INFORMATION			
DRAWING TITLE	ELECTRICAL SERVICES MEZZANINE LEVEL CONTAINMENT LAYOUT		
DESIGNED BY	SH	DATE	Sept 2022
DRAWN BY	TS	KJT JOB No.	
SCALE	1:100 @ A1		L3221
JOB CODE	ORIGIN-VOL-LEVEL-TYPE-ROLE-CLASS NUMBER		SUIT-REV
L3221	KJT-ZZ-MZ-DR-E-6101		S4-P02





LEGEND:

- 300mm SUB-MAIN CABLE TRAY
- 100mmx100mm L&P CABLE TRUNKING
- 150mm FIRE ALARM BASKET
- 100mm SEC/LV/BMS ALARM BASKET
- 300mm DATA BASKET
- 50mm FIRE ALARM BASKET

- BUSBAR** RISING ELECTRICAL LV POWER BUSBAR (NON-ESSENTIAL & ESSENTIAL)
- TENANT ON-FLOOR MCCB PANELBOARD
- LTG & POWER TP&N DISTRIBUTION BOARD
- LTG & POWER SP&N DISTRIBUTION BOARD
- EXISTING DISTRIBUTION TO REMAIN

NOTE THIS DRAWING INDICATES THE PRIMARY CONTAINMENT SYSTEMS ROUTES ONLY. SECONDARY CONTAINMENT INCLUDING CONDUIT ETC SHALL BE PROVIDED FROM THE PRIMARY ROUTES TO INDIVIDUAL ITEMS OF EQUIPMENT SUCH AS SMOKE DETECTORS AND LUMINAIRES AS REQUIRED.

ALL CABLING WILL BE INSTALLED ON CONTAINMENT ON PRIMARY ROUTES AND IN CONDUIT OR SURFACE CLIPPED TO DEVICES. CABLING SHALL BE CONCEALED WHERE POSSIBLE.

ALL CONTAINMENT SHALL BE SUITABLY FIXED TO SOFFITS AND SUPPORTED VIA STEEL ROD AND UNISTRUT.

S4 - P02	20/02/2023	LBC ISSUE	KR	SH
S4 - P02	28/10/2022	TENDER ISSUE	SH	KR
S2 - P01	14/10/2022	STAGE 3 ISSUE	SH	KR
SUIT-REV	DATE	DESCRIPTION	DRN	CHK
STATUS				

FOR INFORMATION

THIS DRAWING IS COPYRIGHT. DO NOT SCALE FROM DRAWING. THE CONTRACTOR AND THEIR SUB-CONTRACTORS ARE TO VERIFY ALL DIMENSIONS ON SITE BEFORE MAKING SHOP DRAWINGS OR COMMENCING MANUFACTURE.

**KJ TAIT**  
ENGINEERS

1 Fitzroy Square  
London W1T 5HF  
T +44 (0) 207 388 0952  
E london@kjtait.com  
W www.kjtait.com

PROJECT INFORMATION			
CLIENT	OXFORD VICTORIA HOUSE		
PROJECT	DEVELOPMENT LTD LONDON, WC1B 4DA		
DRAWING INFORMATION			
DRAWING TITLE	ELECTRICAL SERVICES UPPER GROUND FLOOR CONTAINMENT LAYOUT		
DESIGNED BY	SH	DATE	Sept 2022
DRAWN BY	TS	KJT JOB NO.	
SCALE	1:100 @ A1	L3221	
JOB CODE	ORIGIN-LEVEL-TYPE-ROLE-CLASS NUMBER	SUIT-REV	
L3221	KJT-ZZ-UG-DR-E-6101	S4-P02	