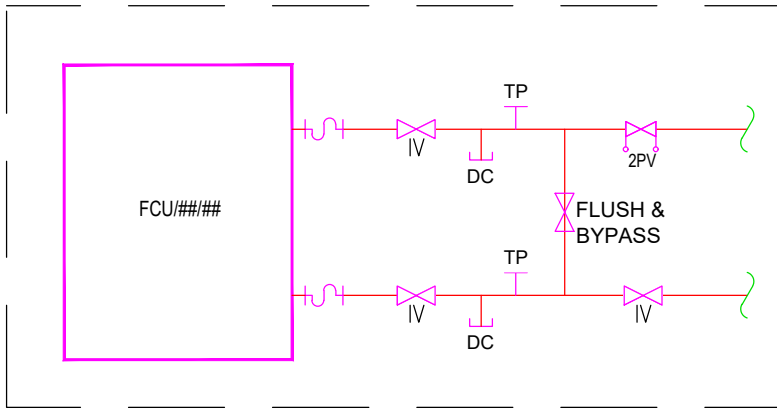
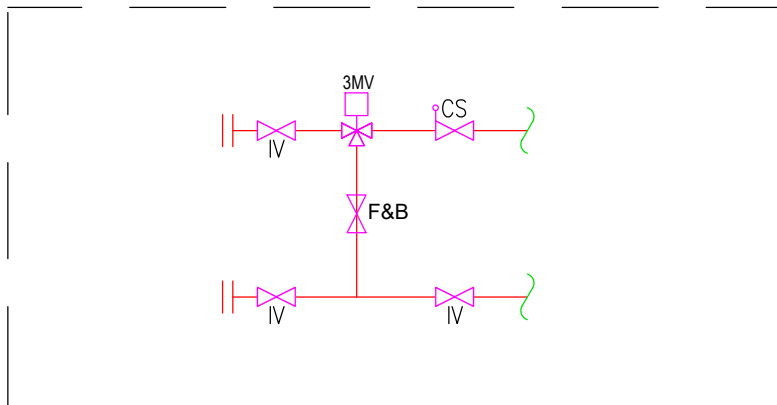


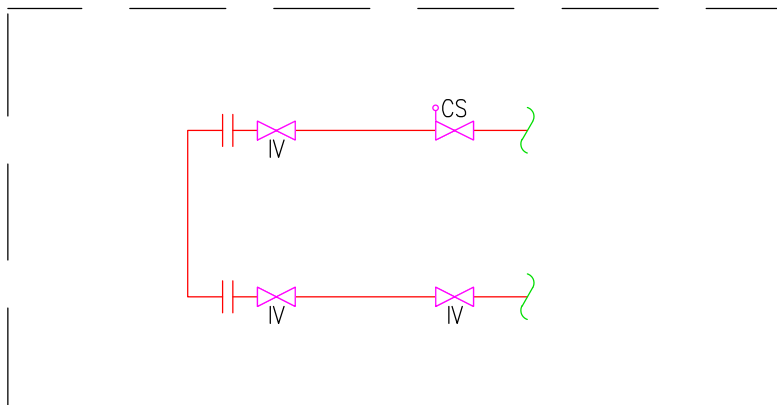
DETAIL A- STANDARD FCU CONNECTION DETAIL



DETAIL B- END OF RUN 3-PORT BYPASS



DETAIL C- FUTURE CONNECTION BYPASS



Notes:

- DO NOT SCALE FROM THIS DRAWING.
- THIS DRAWING SHALL BE READ IN CONJUNCTION WITH THE MECHANICAL SPECIFICATION, THE ARCHITECTS DIMENSIONED LAYOUTS AND ALL OTHER RELEVANT CONTRACT DOCUMENTATION.
- ALL PLANT AND EQUIPMENT SHALL BE INSTALLED, REGULATED AND TESTED IN ACCORDANCE WITH THE MANUFACTURERS PRINTED INSTRUCTIONS
- ALL INTERNAL HEATING AND CHILLED WATER PIPEWORK TO BE CARBON STEEL PIPEWORK TO BS 1387 THERMALLY INSULATED WITH FOIL FACE CLASS 'O' INSULATION AND ALUMINIUM HAMMER CALD PROTECTIVE CASING.
- AUTOMATIC AIR VENTS SHALL BE FITTED ON ALL SYSTEM HIGH POINTS AND MANUAL DRAIN COCKS ON SYSTEM LOW POINTS.
- ALL PIPEWORK PENETRATIONS THROUGH FIRE RATED STRUCTURES OR BARRIERS TO BE SUITABLY FIRED RATED.
- ALL VALVES TO BE FULLY ACCESSIBLE AND PROVIDED WITH IDENTIFICATION LABELS.
- THE CONTRACTOR SHALL ALLOW FOR TESTING, COMMISSIONING AND SETTING TO WORK ALL HEATING, CHILLED WATER AND VENTILATION SYSTEMS IN ACCORDANCE WITH THE RELEVANT CIBSE COMMISSIONING CODES AND THE BSRIA APPLICATION GUIDES.
- THE MECHANICAL CONTRACTOR SHALL BE RESPONSIBLE FOR THE CO-ORDINATION OF THEIR WORKS WITH ALL OTHER TRADES.

CEILING VOID PIPEWORK SERVICES

- NEW LTHW FLOW/RETURN PIPEWORK
- NEW CHW FLOW/RETURN PIPEWORK
- NEW CONDENSATE PIPEWORK

LEGEND

- PULSED FLOW METER
- COMMISSIONING SET
- STRAINER
- ISOLATION VALVE
- 2-PORT MOTORISED CONTROL VALVE

S4 - P04	21/02/2023	LBC ISSUE	TE	AG
S4 - P03	28/10/2022	TENDER ISSUE	TE	AG
S2 - P02	14/10/2022	INFORMATION ISSUE	TE	AG
S2 - P01	30/09/2022	INFORMATION ISSUE	TE	AG
SUIT- REV	DATE	DESCRIPTION	DRN	CHK
STATUS				

FOR INFORMATION

THIS DRAWING IS COPYRIGHT. DO NOT SCALE FROM DRAWING. THE CONTRACTOR AND THEIR SUB-CONTRACTORS ARE TO VERIFY ALL DIMENSIONS ON SITE BEFORE MAKING SHOP DRAWINGS OR COMMENCING MANUFACTURE.

KJ TAIT
ENGINEERS

1 Fitzroy Square
London W1T 5HF
T +44 (0) 207 388 0952
E london@kjtait.com
W www.kjtait.com

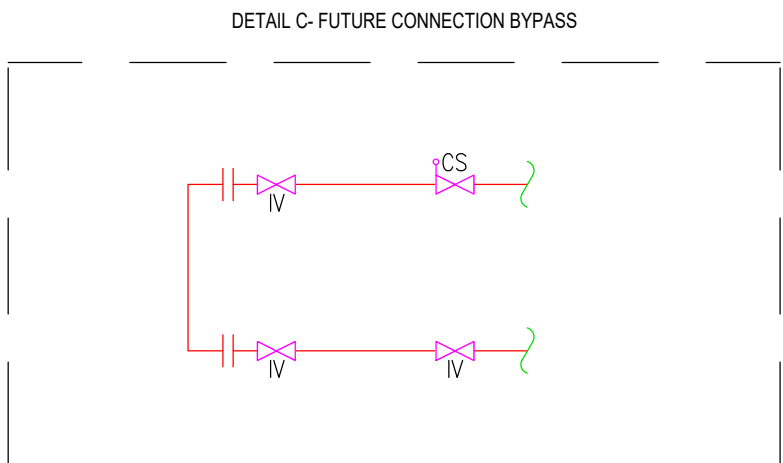
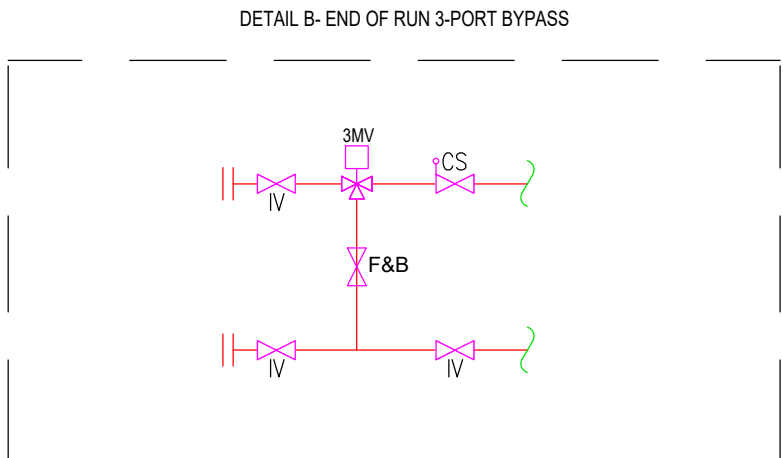
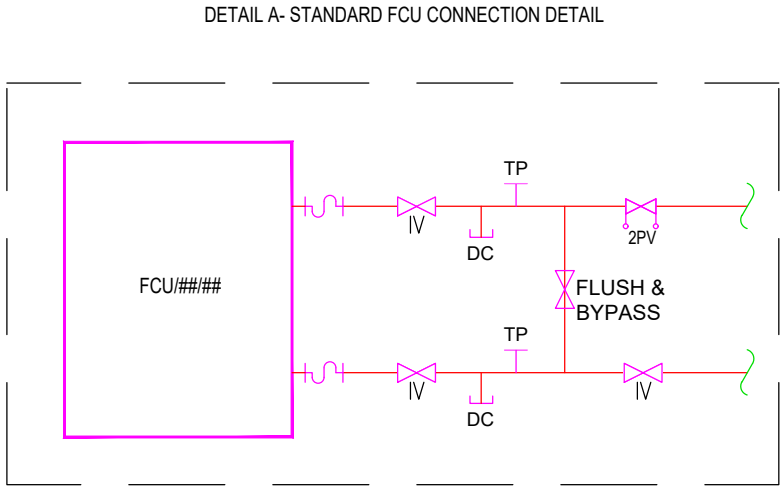
PROJECT INFORMATION

CLIENT OXFORD VICTORIA HOUSE
PROJECT DEVELOPMENT LTD
LONDON, WC1B 4DA

DRAWING INFORMATION

DRAWING TITLE MECHANICAL SERVICES
LGF HTG & COOLING LAYOUT
SHEET 1 of 2

DESIGNED BY	TE	DATE	May 2022
DRAWN BY	TE	KJT JOB No.	
SCALE	1:100 @ A1	L3221	
JOB CODE	ORIGIN-VOL-LEVEL-TYPE-ROLE-CLASS NUMBER	SUIT- REV	
L3221	KJT-01-LG-DR-M-5501	S4-P04	



- Notes:
- DO NOT SCALE FROM THIS DRAWING.
 - THIS DRAWING SHALL BE READ IN CONJUNCTION WITH THE MECHANICAL SPECIFICATION, THE ARCHITECT'S DIMENSIONED LAYOUTS AND ALL OTHER RELEVANT CONTRACT DOCUMENTATION.
 - ALL PLANT AND EQUIPMENT SHALL BE INSTALLED, REGULATED AND TESTED IN ACCORDANCE WITH THE MANUFACTURERS PRINTED INSTRUCTIONS.
 - ALL INTERNAL HEATING AND CHILLED WATER PIPEWORK TO BE CARBON STEEL PIPEWORK TO BS 1387 THERMALLY INSULATED WITH FOIL FACE CLASS 'O' INSULATION AND ALUMINIUM HAMMER CALD PROTECTIVE CASING.
 - AUTOMATIC AIR VENTS SHALL BE FITTED ON ALL SYSTEM HIGH POINTS AND MANUAL DRAIN COCKS ON SYSTEM LOW POINTS.
 - ALL PIPEWORK PENETRATIONS THROUGH FIRE RATED STRUCTURES OR BARRIERS TO BE SUITABLY FIRED RATED.
 - ALL VALVES TO BE FULLY ACCESSIBLE AND PROVIDED WITH IDENTIFICATION LABELS.
 - THE CONTRACTOR SHALL ALLOW FOR TESTING, COMMISSIONING AND SETTING TO WORK ALL HEATING, CHILLED WATER AND VENTILATION SYSTEMS IN ACCORDANCE WITH THE RELEVANT CIBSE COMMISSIONING CODES AND THE BSRIA APPLICATION GUIDES.
 - THE MECHANICAL CONTRACTOR SHALL BE RESPONSIBLE FOR THE CO-ORDINATION OF THEIR WORKS WITH ALL OTHER TRADES.

CEILING VOID PIPEWORK SERVICES

NEW LTHW FLOW/RETURN PIPEWORK
NEW CHW FLOW/RETURN PIPEWORK
NEW CONDENSATE PIPEWORK

LEGEND

CS PULSED FLOW METER
ST COMMISSIONING SET
IV STRAINER
2PV ISOLATION VALVE
2PV 2-PORT MOTORISED CONTROL VALVE

S4 - P03	21/02/2023	LBC ISSUE RADIATOR FOR WELFARE ADDED	TE	AG
S4 - P02	28/10/2022	TENDER ISSUE	TE	AG
S2 - P01	14/10/2022	INFORMATION ISSUE	TE	AG
SUIT-REV	DATE	DESCRIPTION	DRN	CHK

FOR INFORMATION

THIS DRAWING IS COPYRIGHT. DO NOT SCALE FROM DRAWING.
THE CONTRACTOR AND THEIR SUB-CONTRACTORS ARE TO VERIFY ALL DIMENSIONS ON SITE BEFORE MAKING SHOP DRAWINGS OR COMMENCING MANUFACTURE.

KJ TAIT
ENGINEERS

1 Fitzroy Square
London W1T 5HF
T +44 (0) 207 388 0952
E london@kjtait.com
W www.kjtait.com

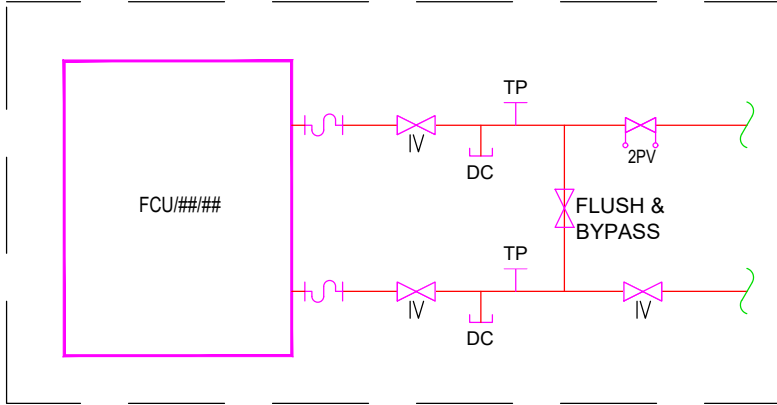
PROJECT INFORMATION			
CLIENT	OXFORD VICTORIA HOUSE		
PROJECT	DEVELOPMENT LTD LONDON, WC1B 4DA		
DRAWING INFORMATION			
DRAWING TITLE	MECHANICAL SERVICES MEZANINE HTG & COOLING LAYOUT SHEET 1 of 1		
DESIGNED BY	TE	DATE	May 2022
DRAWN BY	TE	KJT JOB NO.	
SCALE	1:100 @ A1		L3221
JOB CODE	ORIGIN-VOL-LEVEL-TYPE-ROLE-CLASS NUMBER		SUIT-REV
L3221	KJT-01-MZ-DR-M-5501		S4-P03



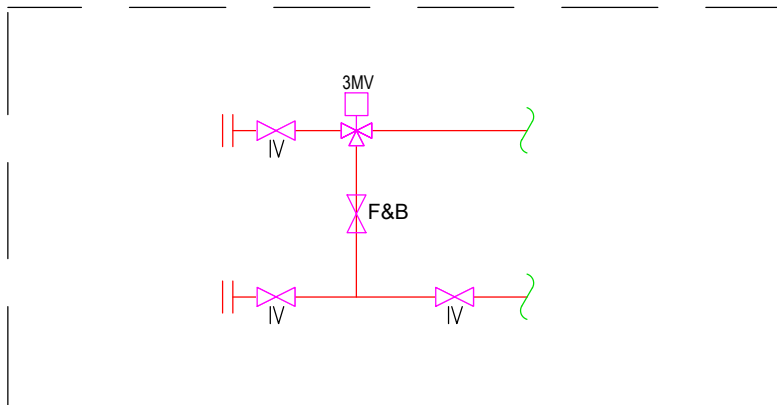
WC's to be refurbished & reconfigured. Finish and materials and fittings to match elsewhere.

Existing staircase with link to second floor to be retained. Raised access floor to be retained.

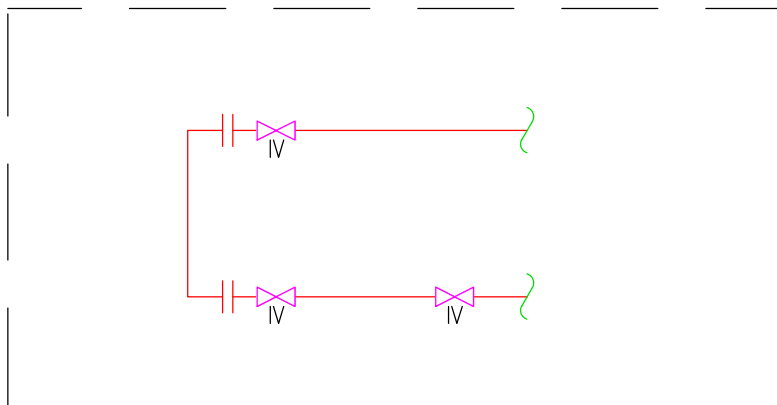
DETAIL A- STANDARD FCU CONNECTION DETAIL



DETAIL B- END OF RUN 3-PORT BYPASS



DETAIL C- FUTURE CONNECTION BYPASS



Notes:

- DO NOT SCALE FROM THIS DRAWING.
- THIS DRAWING SHALL BE READ IN CONJUNCTION WITH THE MECHANICAL SPECIFICATION. THE ARCHITECT'S DIMENSIONED LAYOUTS AND ALL OTHER RELEVANT CONTRACT DOCUMENTATION.
- ALL PLANT AND EQUIPMENT SHALL BE INSTALLED, REGULATED AND TESTED IN ACCORDANCE WITH THE MANUFACTURERS PRINTED INSTRUCTIONS
- ALL INTERNAL HEATING AND CHILLED WATER PIPEWORK TO BE CARBON STEEL PIPEWORK TO BS 1387 THERMALLY INSULATED WITH FOIL FACE CLASS 'O' INSULATION AND ALUMINIUM HAMMER COLD PROTECTIVE CASING.
- AUTOMATIC AIR VENTS SHALL BE FITTED ON ALL SYSTEM HIGH POINTS AND MANUAL DRAIN COCKS ON SYSTEM LOW POINTS.
- ALL PIPEWORK PENETRATIONS THROUGH FIRE RATED STRUCTURES OR BARRIERS TO BE SUITABLY FIRE RATED.
- ALL VALVES TO BE FULLY ACCESSIBLE AND PROVIDED WITH IDENTIFICATION LABELS.
- THE CONTRACTOR SHALL ALLOW FOR TESTING, COMMISSIONING AND SETTING TO WORK ALL HEATING, CHILLED WATER AND VENTILATION SYSTEMS IN ACCORDANCE WITH THE RELEVANT CIBSE COMMISSIONING CODES AND THE BSRIA APPLICATION GUIDES.
- THE MECHANICAL CONTRACTOR SHALL BE RESPONSIBLE FOR THE CO-ORDINATION OF THEIR WORKS WITH ALL OTHER TRADES.

CEILING VOID PIPEWORK SERVICES

- NEW LTHW FLOW/RETURN PIPEWORK
- NEW CHW FLOW/RETURN PIPEWORK
- NEW CONDENSATE PIPEWORK

LEGEND

- PULSED FLOW METER
- COMMISSIONING SET
- STRAINER
- ISOLATION VALVE
- 2-PORT MOTORISED CONTROL VALVE

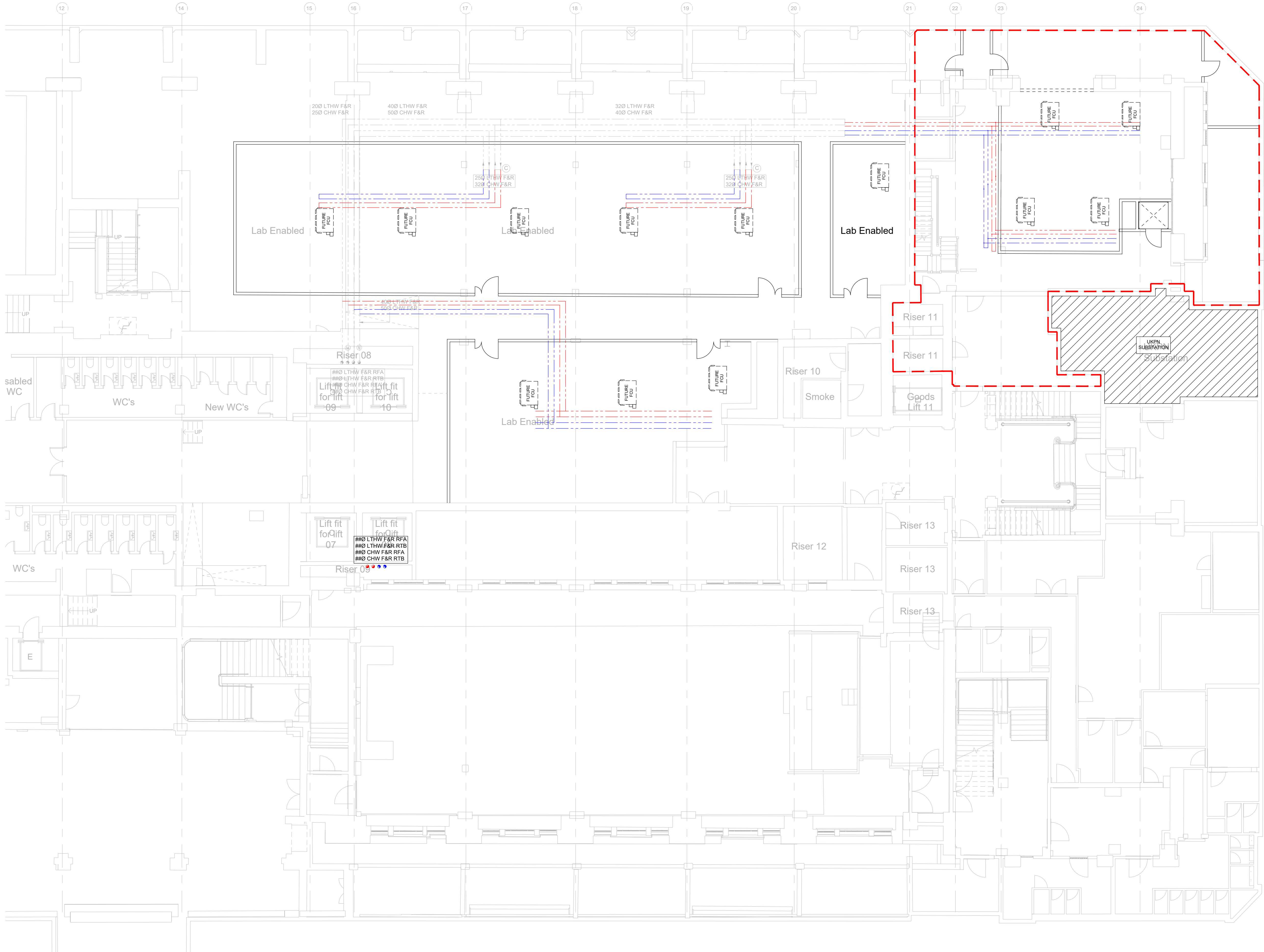
S4 - P04	21/02/2023	LBC ISSUE	TE	AG
S4 - P03	28/10/2022	TENDER ISSUE	TE	AG
S2 - P02	13/10/2022	INFORMATION ISSUE	TE	AG
S2 - P01	30/09/2022	INFORMATION ISSUE	TE	AG
SUIT-REV	DATE	DESCRIPTION	DRN	CHK

FOR INFORMATION

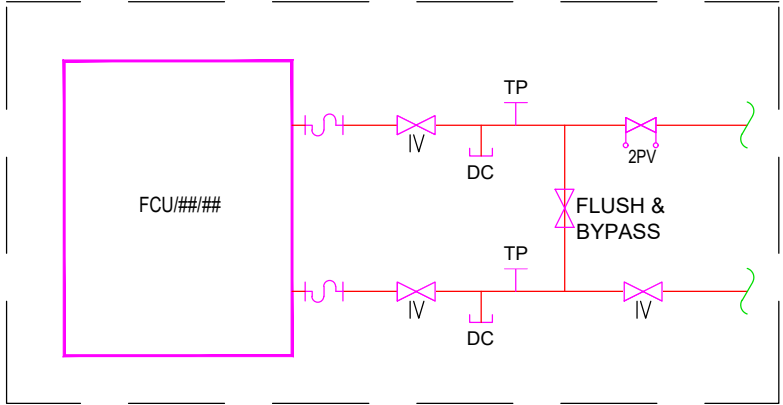
THIS DRAWING IS COPYRIGHT. DO NOT SCALE FROM DRAWING. THE CONTRACTOR AND THEIR SUB-CONTRACTORS ARE TO VERIFY ALL DIMENSIONS ON SITE BEFORE MAKING SHOP DRAWINGS OR COMMENCING MANUFACTURE.

KJ TAIT
ENGINEERS
1 Fitzroy Square
London W1T 5HF
T +44 (0) 207 388 0952
E london@kjtait.com
W www.kjtait.com

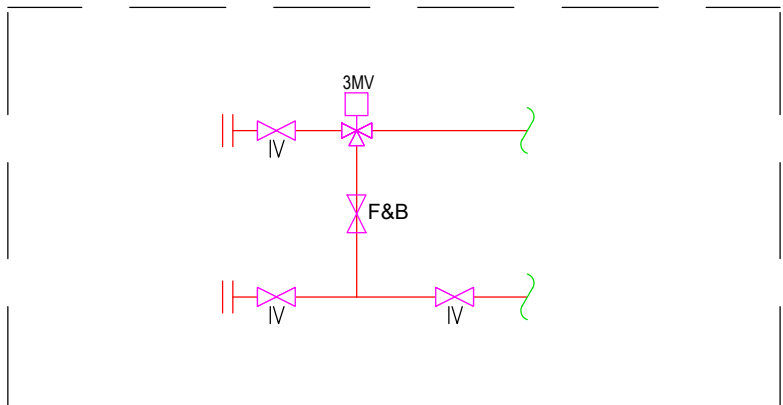
PROJECT INFORMATION				
CLIENT	OXFORD VICTORIA HOUSE			
PROJECT	DEVELOPMENT LTD LONDON, WC1B 4DA			
DRAWING INFORMATION				
DRAWING TITLE	MECHANICAL SERVICES UGF HTG & COOLING LAYOUT SHEET 1 of 2			
DESIGNED BY	TE	DATE	May 2022	
DRAWN BY	TE	KJT JOB No.		
SCALE	1:100 @ A1		L3221	
JOB CODE	ORIGIN-VOL-LEVEL-TYPE-ROLE-CLASS NUMBER			SUIT-REV
L3221	KJT-01-UG-DR-M-5501			S4-P04



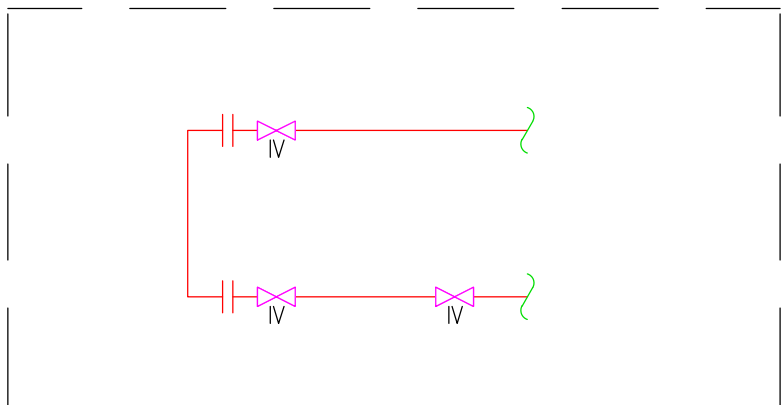
DETAIL A- STANDARD FCU CONNECTION DETAIL



DETAIL B- END OF RUN 3-PORT BYPASS



DETAIL C- FUTURE CONNECTION BYPASS



- Notes:
- DO NOT SCALE FROM THIS DRAWING.
 - THIS DRAWING SHALL BE READ IN CONJUNCTION WITH THE MECHANICAL SPECIFICATION, THE ARCHITECT'S DIMENSIONED LAYOUTS AND ALL OTHER RELEVANT CONTRACT DOCUMENTATION.
 - ALL PLANT AND EQUIPMENT SHALL BE INSTALLED, REGULATED AND TESTED IN ACCORDANCE WITH THE MANUFACTURERS PRINTED INSTRUCTIONS.
 - ALL INTERNAL HEATING AND CHILLED WATER PIPEWORK TO BE CARBON STEEL PIPEWORK TO BS 1387 THERMALLY INSULATED WITH FOIL FACE CLASS 'O' INSULATION AND ALUMINIUM HAMMER CALD PROTECTIVE CASING.
 - AUTOMATIC AIR VENTS SHALL BE FITTED ON ALL SYSTEM HIGH POINTS AND MANUAL DRAIN COCKS ON SYSTEM LOW POINTS.
 - ALL PIPEWORK PENETRATIONS THROUGH FIRE RATED STRUCTURES OR BARRIERS TO BE SUITABLY FIRED RATED.
 - ALL VALVES TO BE FULLY ACCESSIBLE AND PROVIDED WITH IDENTIFICATION LABELS.
 - THE CONTRACTOR SHALL ALLOW FOR TESTING, COMMISSIONING AND SETTING TO WORK ALL HEATING, CHILLED WATER AND VENTILATION SYSTEMS IN ACCORDANCE WITH THE RELEVANT CBSE COMMISSIONING CODES AND THE BSRIA APPLICATION GUIDES.
 - THE MECHANICAL CONTRACTOR SHALL BE RESPONSIBLE FOR THE CO-ORDINATION OF THEIR WORKS WITH ALL OTHER TRADES.

CEILING VOID PIPEWORK SERVICES

- NEW LTHW FLOW/RETURN PIPEWORK
- NEW CHW FLOW/RETURN PIPEWORK
- NEW CONDENSATE PIPEWORK

LEGEND

- PULSED FLOW METER
- COMMISSIONING SET
- STRAINER
- ISOLATION VALVE
- 2P/2N MOTORISED CONTROL VALVE

S4 - P05	21/02/2023	LBC ISSUE	TE	AG
SERVICES FOR UNIT 1 AND TEST FIT PIPEWORK ADDED				
S4 - P04	20/01/2023	LBC ISSUE	TE	AG
SERVICES FOR UNIT 1 ADDED				
S4 - P03	28/10/2022	TENDER ISSUE	TE	AG
S2 - P02	14/10/2022	INFORMATION ISSUE	RJ	AG
S2 - P01	30/09/2022	INFORMATION ISSUE	RJ	AG
SUIT-REV	DATE	DESCRIPTION	DRN	CHK
STATUS				

FOR INFORMATION

THIS DRAWING IS COPYRIGHT. DO NOT SCALE FROM DRAWING. THE CONTRACTOR AND THEIR SUB-CONTRACTORS ARE TO VERIFY ALL DIMENSIONS ON SITE BEFORE MAKING SHOP DRAWINGS OR COMMENCING MANUFACTURE.

KJ TAIT
ENGINEERS

1 Fitzroy Square
London W1T 5HF
T +44 (0) 207 388 0952
E london@kjtait.com
W www.kjtait.com

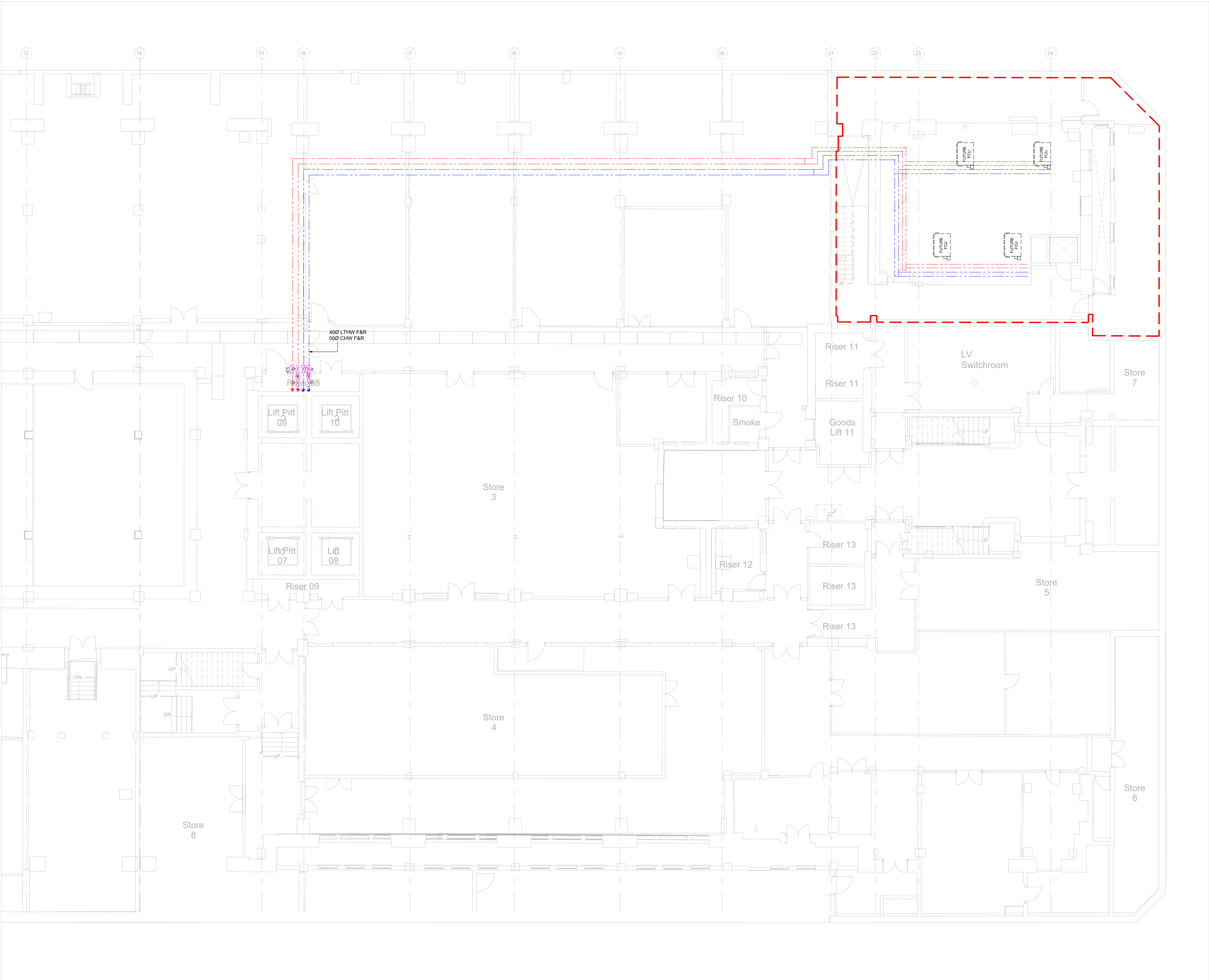
PROJECT INFORMATION

CLIENT OXFORD VICTORIA HOUSE
PROJECT DEVELOPMENT LTD
LONDON, WC1B 4DA

DRAWING INFORMATION

DRAWING TITLE MECHANICAL SERVICES
B1 HEATING & COOLING LAYOUT
SHEET 2 of 2

DESIGNED BY	TE	DATE	May 2022
DRAWN BY	TE	KJT JOB No.	
SCALE	1:100 @ A1	L3221	
JOB CODE	ORIGIN-VOL-LEVEL-TYPE-ROLE-CLASS NUMBER	SUIT-REV	
L3221	KJT-01-B1-DR-M-5501	S4-P05	



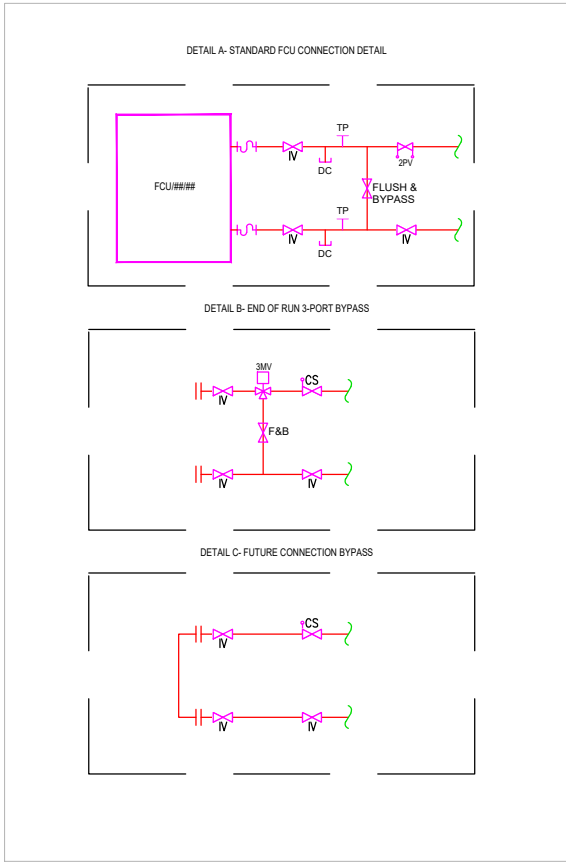
- Notes:
- DO NOT SCALE FROM THIS DRAWING.
 - THIS DRAWING SHALL BE READ IN CONJUNCTION WITH THE MECHANICAL SPECIFICATION, THE ARCHITECTS DIMENSIONED LAYOUTS AND ALL OTHER RELEVANT CONTRACT DOCUMENTATION.
 - ALL PLANT AND EQUIPMENT SHALL BE INSTALLED, REGULATED AND TESTED IN ACCORDANCE WITH THE MANUFACTURERS PRINTED INSTRUCTIONS
 - ALL INTERNAL HEATING AND CHILLED WATER PIPEWORK TO BE CARBON STEEL PIPEWORK TO BS 1387 THERMALLY INSULATED WITH FOIL FACE CLASS 'O' INSULATION AND ALUMINIUM HAMMER CALD PROTECTIVE CASING.
 - AUTOMATIC AIR VENTS SHALL BE FITTED ON ALL SYSTEM HIGH POINTS AND MANUAL DRAIN COCKS ON SYSTEM LOW POINTS.
 - ALL PIPEWORK PENETRATIONS THROUGH FIRE RATED STRUCTURES OR BARRIERS TO BE SUITABLY FIRED RATED.
 - ALL VALVES TO BE FULLY ACCESSIBLE AND PROVIDED WITH IDENTIFICATION LABELS.
 - THE CONTRACTOR SHALL ALLOW FOR TESTING, COMMISSIONING AND SETTING TO WORK ALL HEATING, CHILLED WATER AND VENTILATION SYSTEMS IN ACCORDANCE WITH THE RELEVANT CIBSE COMMISSIONING CODES AND THE BSRIA APPLICATION GUIDES.
 - THE MECHANICAL CONTRACTOR SHALL BE RESPONSIBLE FOR THE CO-ORDINATION OF THEIR WORKS WITH ALL OTHER TRADES.

CEILING VOID PIPEWORK SERVICES

NEW LTHW FLOW/RETURN PIPEWORK
NEW CHW FLOW/RETURN PIPEWORK
NEW CONDENSATE PIPEWORK

LEGEND

PULSED FLOW METER
COMMISSIONING SET
STRAINER
ISOLATION VALVE
2-PORT MOTORISED CONTROL VALVE



S4 - P01	20/01/2023	LBC ISSUE	AG	MT
S4 - P01	20/01/2023	LBC ISSUE	AG	MT
SUIT-REV	DATE	DESCRIPTION	DRN	CHK

FOR INFORMATION

THIS DRAWING IS COPYRIGHT. DO NOT SCALE FROM DRAWING.
THE CONTRACTOR AND THEIR SUB-CONTRACTORS ARE TO VERIFY ALL DIMENSIONS ON SITE BEFORE MAKING SHOP DRAWINGS OR COMMENCING MANUFACTURE.

KJ TAIT
ENGINEERS

1 Fitzroy Square
London W1T 5HF
T +44 (0) 207 388 0952
E london@kjtait.com
W www.kjtait.com

PROJECT INFORMATION			
CLIENT	OXFORD VICTORIA HOUSE		
PROJECT	DEVELOPMENT LTD LONDON, WC1B 4DA		
DRAWING INFORMATION			
DRAWING TITLE	MECHANICAL SERVICES BASEMENT LEVEL 2 LTHW & CHW LAYOUT		
DESIGNED BY	AG	DATE	Sept 2022
DRAWN BY	AG	KJT JOB No.	
SCALE	1:100 @ A1		
JOB CODE	ORIGIN-VOL-LEVEL-TYPE-ROLE-CLASS NUMBER		SUIT-REV
L3221	KJT-02-B2-DR-M-5501		S4-P01

