

NOTES:

- THE DETAIL ON THIS DRAWING IS SPECIFIC TO INTERNAL ABOVE GROUND DRAINAGE AND EXCLUDES BELOW GROUND DRAINAGE, SURFACE WATER DRAINAGE AND RAINWATER DRAINAGE.
- THE COMPLETED SYSTEM SHALL BE A GRAVITY DRAINED SYSTEM UTILISING WHITE/GREY UPVC PIPEWORK AND FITTINGS TO DISTRIBUTE WASTE FROM ALL APPLIANCES LOCATED WITHIN THE BUILDING TO APPROPRIATE POP-UP CONNECTIONS FROM THE BELOW GROUND DRAINAGE SYSTEM DETAILED BY OTHERS.
- ALL NEW FINAL APPLIANCE CONNECTIONS WILL BE WHITE MUPVC INCORPORATING MUPVC TRAPS FOR SINK, BASIN AND URINAL CONNECTIONS AND PROPRIETARY UPVC PAN CONNECTORS FOR WC CONNECTIONS.
- ALL TRAPS TO BE OF THE ANTI-SYPHON TYPE TO PROTECT TRAP CONNECTIONS FROM LOSS OF WATER SEAL.
- ALL MAIN SOIL/WASTE VENT PIPES SHALL RISE TO ROOF LEVEL AND TERMINATE WITH A VENT COWL BEFORE DISCHARGING TO ATMOSPHERE (NOTE THAT SOME VENT PIPES WILL BE COLLECTED TOGETHER WITHIN THE UPPER FLOOR CEILING BEFORE RISING TO ROOF LEVEL TO REDUCE NUMBER OF ROOF PENETRATIONS).
- WHERE INDICATED ON THE DRAWINGS APPLIANCES TO BE VENTED USING SUITABLY SIZED AIR ADMITTANCE VALVES.
- FALLS ON SOIL WASTE PIPES AND VENT PIPES SHALL NOT FALL BELOW THE MINIMUM STATED IN BS EN 12056:2000.
- SUITABLE ACCESS SHALL BE PROVIDED AND ALL CHANGES OF DIRECTION, AT EACH FLOOR LEVEL ABOVE BRANCH CONNECTIONS AND AT THE ALL POP-UP CONNECTIONS TO THE BELOW GROUND DRAINAGE.
- WHERE PLASTIC PIPEWORK PASSES THROUGH ANY FIRE RATED WALLS, FLOORS, PARTITIONS OR CEILING A SUITABLY RATED INTUMESCENT FIRE SLEEVE/COLLAR SHALL BE INSTALLED IN ACCORDANCE WITH BS276 TO PROTECT THE PENETRATION.

Abbreviations:

- 32x75mm DEEP SEAL MUPVC BOTTLE TRAP TO EACH WHB.
- 42x75mm DEEP SEAL MUPVC TUBULAR TRAP TO EACH SINK.
- 42x75mm DEEP SEAL MUPVC BOTTLE TRAP SERVING URINAL BOWL.
- 110ø MULTIKWIC CONNECTOR TO WC PAN.
- 32ø MUPVC WP.
- 42ø MUPVC WP.
- 50ø MPVC WP.
- 82ø UPVC WP.
- 110ø UPVC SP.
- CLAY TRAP WITH 50ø MUPVC INLET & OUTLET.
- 50ø INTUMESCENT FIRE COLLAR/SLEEVE.
- 82ø INTUMESCENT FIRE COLLAR/SLEEVE.
- 110ø INTUMESCENT FIRE COLLAR/SLEEVE.

Legend:

- PIPEWORK WITHIN CEILING VOID
- PIPEWORK AT HIGH LEVEL
- PIPEWORK AT LOW LEVEL
- PIPEWORK BELOW FLOOR SLAB
- SVP SOIL VENT PIPE
- WVP WASTE VENT PIPE
- VP VENT PIPE
- SP SOIL PIPE
- S/S STUB STACK
- WP WASTE PIPE
- RE RODDING EYE
- BC BLANK CAP
- FFL FINISHED FLOOR LEVEL
- ACCESS PIPE
- AAV AIR ADMITTANCE VALVE
- PIPEWORK FROM ABOVE
- PIPEWORK FROM HIGH LEVEL/LOW LEVEL
- VENT PIPE
- STUB STACK
- FROM ABOVE
- FROM BELOW
- TO ABOVE
- TO BELOW
- HIGH LEVEL
- LOW LEVEL

S4 - P02	20/02/2023	LBC ISSUE: DRAINAGE ADDED TO MEDITATION RM FOU DRAINAGE FOR LAB ENABLED SPACES ADDED	AG	MT
S2 - P01	28/10/2022	TENDER ISSUE	AG	MT
SUIT-REV	DATE	DESCRIPTION	DRN	CHK
STATUS				

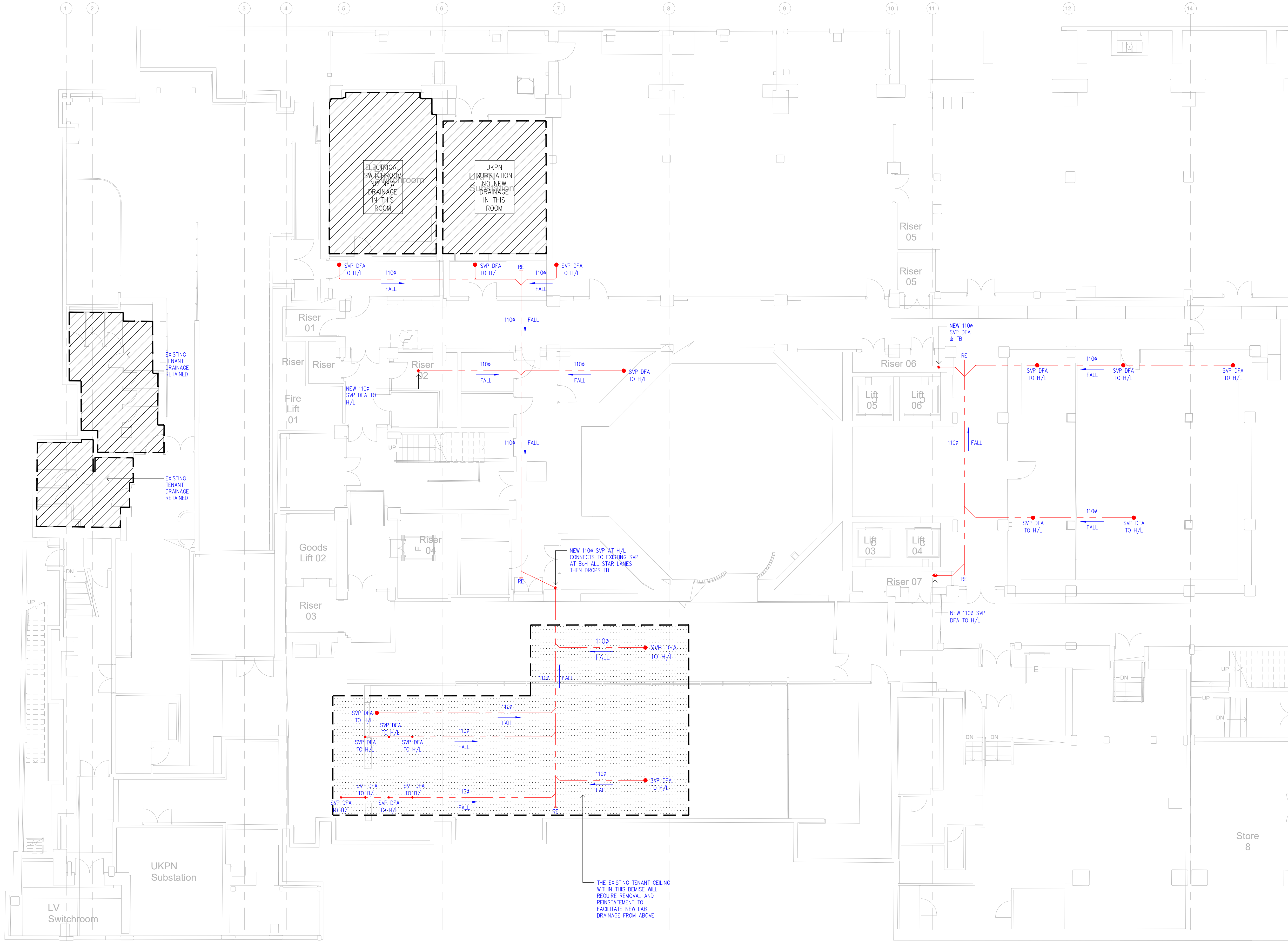
FOR INFORMATION

THIS DRAWING IS COPYRIGHT. DO NOT SCALE FROM DRAWING. THE CONTRACTOR AND THEIR SUB-CONTRACTORS ARE TO VERIFY ALL DIMENSIONS ON SITE BEFORE MAKING SHOP DRAWINGS OR COMMENCING MANUFACTURE.

**KJ TAIT**  
ENGINEERS

1 Fitzroy Square  
London W1T 5HF  
T +44 (0) 207 388 0952  
E london@kjtait.com  
W www.kjtait.com

PROJECT INFORMATION			
CLIENT	OXFORD VICTORIA HOUSE		
PROJECT	DEVELOPMENT LTD LONDON, WC1B 4DA		
DRAWING INFORMATION			
DRAWING TITLE	MECHANICAL SERVICES BASEMENT 1 DRAINAGE LAYOUT SHEET 1 of 2		
DESIGNED BY	AG	DATE	Sept. 2022
DRAWN BY	AG	K/JT JOB No.	
SCALE	1:100 @ A1	L3221	
JOB CODE	ORIGIN-VOL-LEVEL-TYPE-ROLE-CLASS NUMBER		SUIT-REV
L3221	KJT-01-B1-DR-M-5201		S2-P02



NOTES:

- THE DETAIL ON THIS DRAWING IS SPECIFIC TO INTERNAL ABOVE GROUND DRAINAGE AND EXCLUDES BELOW GROUND DRAINAGE, SURFACE WATER DRAINAGE AND RAINWATER DRAINAGE.
- THE COMPLETED SYSTEM SHALL BE A GRAVITY DRAINED SYSTEM UTILISING WHITE/GREY UPVC PIPEWORK AND FITTINGS TO DISTRIBUTE WASTE FROM ALL APPLIANCES LOCATED WITHIN THE BUILDING TO APPROPRIATE POP-UP CONNECTIONS FROM THE BELOW GROUND DRAINAGE SYSTEM DETAILED BY OTHERS.
- ALL NEW FINAL APPLIANCE CONNECTIONS WILL BE WHITE MUPVC INCORPORATING MUPVC TRAPS FOR SINK, BASIN AND URINAL CONNECTIONS AND PROPRIETARY UPVC PAN CONNECTORS FOR WC CONNECTIONS.
- ALL TRAPS TO BE OF THE ANTI-SYPHON TYPE TO PROTECT TRAP CONNECTIONS FROM LOSS OF WATER SEAL.
- ALL MAIN SOIL/WASTE VENT PIPES SHALL RISE TO ROOF LEVEL AND TERMINATE WITH A VENT COWL BEFORE DISCHARGING TO ATMOSPHERE (NOTE THAT SOME VENT PIPES WILL BE COLLECTED TOGETHER WITHIN THE UPPER FLOOR CEILING BEFORE RISING TO ROOF LEVEL TO REDUCE NUMBER OF ROOF PENETRATIONS).
- WHERE INDICATED ON THE DRAWINGS APPLIANCES TO BE VENTED USING SUITABLY SIZED AIR ADMITTANCE VALVES.
- FALLS ON SOIL WASTE PIPES AND VENT PIPES SHALL NOT FALL BELOW THE MINIMUM STATED IN BS EN 12056:2000.
- SUITABLE ACCESS SHALL BE PROVIDED AND ALL CHANGES OF DIRECTION, AT EACH FLOOR LEVEL ABOVE BRANCH CONNECTIONS AND AT THE ALL POP-UP CONNECTIONS TO THE BELOW GROUND DRAINAGE.
- WHERE PLASTIC PIPEWORK PASSES THROUGH ANY FIRE RATED WALLS, FLOORS, PARTITIONS OR CEILING A SUITABLY RATED INTUMESCENT FIRE SLEEVE/COLLAR SHALL BE INSTALLED IN ACCORDANCE WITH BS276 TO PROTECT THE PENETRATION.

Abbreviations:

- 32x75mm DEEP SEAL MUPVC BOTTLE TRAP TO EACH WHB.
- 42x75mm DEEP SEAL MUPVC TUBULAR TRAP TO EACH SINK.
- 42x75mm DEEP SEAL MUPVC BOTTLE TRAP SERVING URINAL BOWL.
- 110K MULTIKWIC CONNECTOR TO WC PAN.
- 32K MUPVC WP.
- 42K MUPVC WP.
- 50K MPVC WP.
- 82K UPVC WP.
- 110K UPVC SP.
- CLAY TRAP WITH 50K MUPVC INLET & OUTLET.
- 50K INTUMESCENT FIRE COLLAR/SLEEVE.
- 82K INTUMESCENT FIRE COLLAR/SLEEVE.
- 110K INTUMESCENT FIRE COLLAR/SLEEVE.

Legend:

---	PIPEWORK WITHIN CEILING VOID
---	PIPEWORK AT HIGH LEVEL
---	PIPEWORK AT LOW LEVEL
---	PIPEWORK BELOW FLOOR SLAB
SVP	SOIL VENT PIPE
WVP	WASTE VENT PIPE
VP	VENT PIPE
SP	SOIL PIPE
S/S	STUB STACK
WP	WASTE PIPE
RE	RODDING EYE
BC	BLANK CAP
FFL	FINISHED FLOOR LEVEL
AP	ACCESS PIPE
AAV	AIR ADMITTANCE VALVE
●	PIPEWORK FROM ABOVE
●	PIPEWORK FROM HIGH LEVEL/LOW LEVEL
○	VENT PIPE
⊗	STUB STACK
FA	FROM ABOVE
FB	FROM BELOW
TA	TO ABOVE
TB	TO BELOW
HL	HIGH LEVEL
LL	LOW LEVEL

S4 - P02	21/02/2023	LBC ISSUE	AG	MT
S2 - P01	28/10/2022	TENDER ISSUE	AG	MT
SUIT-REV	DATE	DESCRIPTION	DRN	CHK
STATUS				

FOR INFORMATION

THIS DRAWING IS COPYRIGHT. DO NOT SCALE FROM DRAWING. THE CONTRACTOR AND THEIR SUB-CONTRACTORS ARE TO VERIFY ALL DIMENSIONS ON SITE BEFORE MAKING SHOP DRAWINGS OR COMMENCING MANUFACTURE.

**KJ TAIT**  
ENGINEERS

1 Fitzroy Square  
London W1T 5HF  
T +44 (0) 207 388 0952  
E london@kjtait.com  
W www.kjtait.com

PROJECT INFORMATION			
CLIENT	OXFORD VICTORIA HOUSE		
PROJECT	DEVELOPMENT LTD LONDON, WC1B 4DA		
DRAWING INFORMATION			
DRAWING TITLE	MECHANICAL SERVICES BASEMENT 2 LAB DRAINAGE LAYOUT SHEET 1 of 2		
DESIGNED BY	AG	DATE	Sept. 2022
DRAWN BY	AG	K/JT JOB No.	
SCALE	1:100 @ A1		L3221
JOB CODE	ORIGIN-VOL-LEVEL-TYPE-ROLE-CLASS NUMBER KJT-01-B2-DR-M-5201		SUIT-REV S4-P02





- NOTES:
- THE DETAIL ON THIS DRAWING IS SPECIFIC TO INTERNAL ABOVE GROUND DRAINAGE AND EXCLUDES BELOW GROUND DRAINAGE, SURFACE WATER DRAINAGE AND RAINWATER DRAINAGE.
  - THE COMPLETED SYSTEM SHALL BE A GRAVITY DRAINED SYSTEM UTILISING WHITE/GREY UPVC PIPEWORK AND FITTINGS TO DISTRIBUTE WASTE FROM ALL APPLIANCES LOCATED WITHIN THE BUILDING TO APPROPRIATE POP-UP CONNECTIONS FROM THE BELOW GROUND DRAINAGE SYSTEM DETAILED BY OTHERS.
  - ALL NEW FINAL APPLIANCE CONNECTIONS WILL BE WHITE MUPVC INCORPORATING MUPVC TRAPS FOR SINK, BASIN AND URINAL CONNECTIONS AND PROPRIETARY UPVC PAN CONNECTORS FOR WC CONNECTIONS.
  - ALL TRAPS TO BE OF THE ANTI-SYPHON TYPE TO PROTECT TRAP CONNECTIONS FROM LOSS OF WATER SEAL.
  - ALL MAIN SOIL/WASTE VENT PIPES SHALL RISE TO ROOF LEVEL AND TERMINATE WITH A VENT COWL BEFORE DISCHARGING TO ATMOSPHERE (NOTE THAT SOME VENT PIPES WILL BE COLLECTED TOGETHER WITHIN THE UPPER FLOOR CEILING BEFORE RISING TO ROOF LEVEL TO REDUCE NUMBER OF ROOF PENETRATIONS).
  - WHERE INDICATED ON THE DRAWINGS APPLIANCES TO BE VENTED USING SUITABLY SIZED AIR ADMITTANCE VALVES.
  - FALLS ON SOIL WASTE PIPES AND VENT PIPES SHALL NOT FALL BELOW THE MINIMUM STATED IN BS EN 12056:2000.
  - SUITABLE ACCESS SHALL BE PROVIDED AND ALL CHANGES OF DIRECTION, AT EACH FLOOR LEVEL ABOVE BRANCH CONNECTIONS AND AT THE ALL POP-UP CONNECTIONS TO THE BELOW GROUND DRAINAGE.
  - WHERE PLASTIC PIPEWORK PASSES THROUGH ANY FIRE RATED WALLS, FLOORS, PARTITIONS OR CEILING A SUITABLY RATED INTUMESCENT FIRE SLEEVE/COLLAR SHALL BE INSTALLED IN ACCORDANCE WITH BS276 TO PROTECT THE PENETRATION.

- Abbreviations:
- 32x75mm DEEP SEAL MUPVC BOTTLE TRAP TO EACH WHB.
  - 42x75mm DEEP SEAL MUPVC TUBULAR TRAP TO EACH SINK.
  - 42x75mm DEEP SEAL MUPVC BOTTLE TRAP SERVING URINAL BOWL.
  - 110° MULTIKWIC CONNECTOR TO WC PAN.
  - 32° MUPVC WP.
  - 42° MUPVC WP.
  - 50° MPVC WP.
  - 82° UPVC WP.
  - 110° UPVC SP.
  - CLAY TRAP WITH 50° MUPVC INLET & OUTLET.
  - 50° INTUMESCENT FIRE COLLAR/SLEEVE.
  - 82° INTUMESCENT FIRE COLLAR/SLEEVE.
  - 110° INTUMESCENT FIRE COLLAR/SLEEVE.

- Legend:
- PIPEWORK WITHIN CEILING VOID
  - PIPEWORK AT HIGH LEVEL
  - PIPEWORK AT LOW LEVEL
  - PIPEWORK BELOW FLOOR SLAB
  - SVP SOIL VENT PIPE
  - WVP WASTE VENT PIPE
  - VP VENT PIPE
  - SP SOIL PIPE
  - S/S STUB STACK
  - WP WASTE PIPE
  - RE RODDING EYE
  - BC BLANK CAP
  - FFL FINISHED FLOOR LEVEL
  - AP ACCESS PIPE
  - AAV AIR ADMITTANCE VALVE
  - PIPEWORK FROM ABOVE
  - PIPEWORK FROM HIGH LEVEL/LOW LEVEL
  - VENT PIPE
  - STUB STACK
  - FROM ABOVE
  - FROM BELOW
  - TO ABOVE
  - TO BELOW
  - HIGH LEVEL
  - LOW LEVEL

S4 - P02	21/02/2023	LBC ISSUE	AG	MT
S2 - P01	28/10/2022	TENDER ISSUE	AG	MT
SUIT-REV	DATE	DESCRIPTION	DRN	CHK

STATUS

## FOR INFORMATION

THIS DRAWING IS COPYRIGHT. DO NOT SCALE FROM DRAWING. THE CONTRACTOR AND THEIR SUB-CONTRACTORS ARE TO VERIFY ALL DIMENSIONS ON SITE BEFORE MAKING SHOP DRAWINGS OR COMMENCING MANUFACTURE.

**KJ TAIT**  
ENGINEERS

1 Fitzroy Square  
London W1T 5HF  
T +44 (0) 207 388 0952  
E london@kjtait.com  
W www.kjtait.com

PROJECT INFORMATION			
CLIENT	OXFORD VICTORIA HOUSE		
PROJECT	DEVELOPMENT LTD LONDON, WC1B 4DA		
DRAWING INFORMATION			
DRAWING TITLE	MECHANICAL SERVICES LOWER GROUND DRAINAGE LAYOUT SHEET 1 of 2		
DESIGNED BY	AG	DATE	Sept. 2022
DRAWN BY	AG	KJT JOB No.	
SCALE	1:100 @ A1		L3221
JOB CODE	ORIGIN-VOL-LEVEL-TYPE-ROLE-CLASS NUMBER	SUIT-REV	
L3221	KJT-01-LG-DR-M-5201	S4-P02	



- NOTES:
- THE DETAIL ON THIS DRAWING IS SPECIFIC TO INTERNAL ABOVE GROUND DRAINAGE AND EXCLUDES BELOW GROUND DRAINAGE, SURFACE WATER DRAINAGE AND RAINWATER DRAINAGE.
  - THE COMPLETED SYSTEM SHALL BE A GRAVITY DRAINED SYSTEM UTILISING WHITE/GREY UPVC PIPEWORK AND FITTINGS TO DISTRIBUTE WASTE FROM ALL APPLIANCES LOCATED WITHIN THE BUILDING TO APPROPRIATE POP-UP CONNECTIONS FROM THE BELOW GROUND DRAINAGE SYSTEM DETAILED BY OTHERS.
  - ALL NEW FINAL APPLIANCE CONNECTIONS WILL BE WHITE MUPVC INCORPORATING MUPVC TRAPS FOR SINK, BASIN AND URINAL CONNECTIONS AND PROPRIETARY UPVC PAN CONNECTORS FOR WC CONNECTIONS.
  - ALL TRAPS TO BE OF THE ANTI-SYPHON TYPE TO PROTECT TRAP CONNECTIONS FROM LOSS OF WATER SEAL.
  - ALL MAIN SOIL/WASTE VENT PIPES SHALL RISE TO ROOF LEVEL AND TERMINATE WITH A VENT COWL BEFORE DISCHARGING TO ATMOSPHERE (NOTE THAT SOME VENT PIPES WILL BE COLLECTED TOGETHER WITHIN THE UPPER FLOOR CEILING BEFORE RISING TO ROOF LEVEL TO REDUCE NUMBER OF ROOF PENETRATIONS).
  - WHERE INDICATED ON THE DRAWINGS APPLIANCES TO BE VENTED USING SUITABLY SIZED AIR ADMITTANCE VALVES.
  - FALLS ON SOIL WASTE PIPES AND VENT PIPES SHALL NOT FALL BELOW THE MINIMUM STATED IN BS EN 12056:2000.
  - SUITABLE ACCESS SHALL BE PROVIDE AND ALL CHANGES OF DIRECTION, AT EACH FLOOR LEVEL ABOVE BRANCH CONNECTIONS AND AT THE ALL POP-UP CONNECTIONS TO THE BELOW GROUND DRAINAGE.
  - WHERE PLASTIC PIPEWORK PASSES THROUGH ANY FIRE RATED WALLS, FLOORS, PARTITIONS OR CEILING A SUITABLY RATED INTUMESCENT FIRE SLEEVE/COLLAR SHALL BE INSTALLED IN ACCORDANCE WITH BS276 TO PROTECT THE PENETRATOR.

- Abbreviations:
- ① 32x75mm DEEP SEAL MUPVC BOTTLE TRAP TO EACH WHB.
  - ② 42x75mm DEEP SEAL MUPVC TUBULAR TRAP TO EACH SINK.
  - ③ 42x75mm DEEP SEAL MUPVC BOTTLE TRAP SERVING URINAL BOWL.
  - ④ 110ø MULTIKWIC CONNECTOR TO WC PAN.
  - ⑤ 32ø MUPVC WP.
  - ⑥ 42ø MUPVC WP.
  - ⑦ 50ø MPVC WP.
  - ⑧ 82ø UPVC WP.
  - ⑨ 110ø UPVC SP.
  - ⑩ CLAY TRAP WITH 50ø MUPVC INLET & OUTLET.
  - ⑪ 50ø INTUMESCENT FIRE COLLAR/SLEEVE.
  - ⑫ 82ø INTUMESCENT FIRE COLLAR/SLEEVE.
  - ⑬ 110ø INTUMESCENT FIRE COLLAR/SLEEVE.

- Legend:
- PIPEWORK WITHIN CEILING VOID
  - PIPEWORK AT HIGH LEVEL
  - PIPEWORK AT LOW LEVEL
  - PIPEWORK BELOW FLOOR SLAB
  - SVP SOIL VENT PIPE
  - WVP WASTE VENT PIPE
  - VP VENT PIPE
  - SP SOIL PIPE
  - S/S STUB STACK
  - WP WASTE PIPE
  - RE RODDING EYE
  - BC BLANK CAP
  - FFL FINISHED FLOOR LEVEL
  - ACCESS PIPE
  - AAV AIR ADMITTANCE VALVE
  - PIPEWORK FROM ABOVE
  - PIPEWORK FROM HIGH LEVEL/LOW LEVEL
  - VENT PIPE
  - STUB STACK
  - FA FROM ABOVE
  - FB FROM BELOW
  - TA TO ABOVE
  - TB TO BELOW
  - HL HIGH LEVEL
  - LL LOW LEVEL

S4 - P02	21/02/2023	LBC ISSUE: FOU DRAINAGE ADDED TO WRITE-UP AREA. DRAINAGE ADDED FOR NEW WELFARE	AG	MT
S2 - P01	28/10/2022	TENDER ISSUE	AG	MT
SUIT-REV	DATE	DESCRIPTION	DRN	CHK
STATUS				

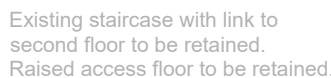
FOR INFORMATION

THIS DRAWING IS COPYRIGHT. DO NOT SCALE FROM DRAWING. THE CONTRACTOR AND THEIR SUB-CONTRACTORS ARE TO VERIFY ALL DIMENSIONS ON SITE BEFORE MAKING SHOP DRAWINGS OR COMMENCING MANUFACTURE.

KJ TAITENGINEERS

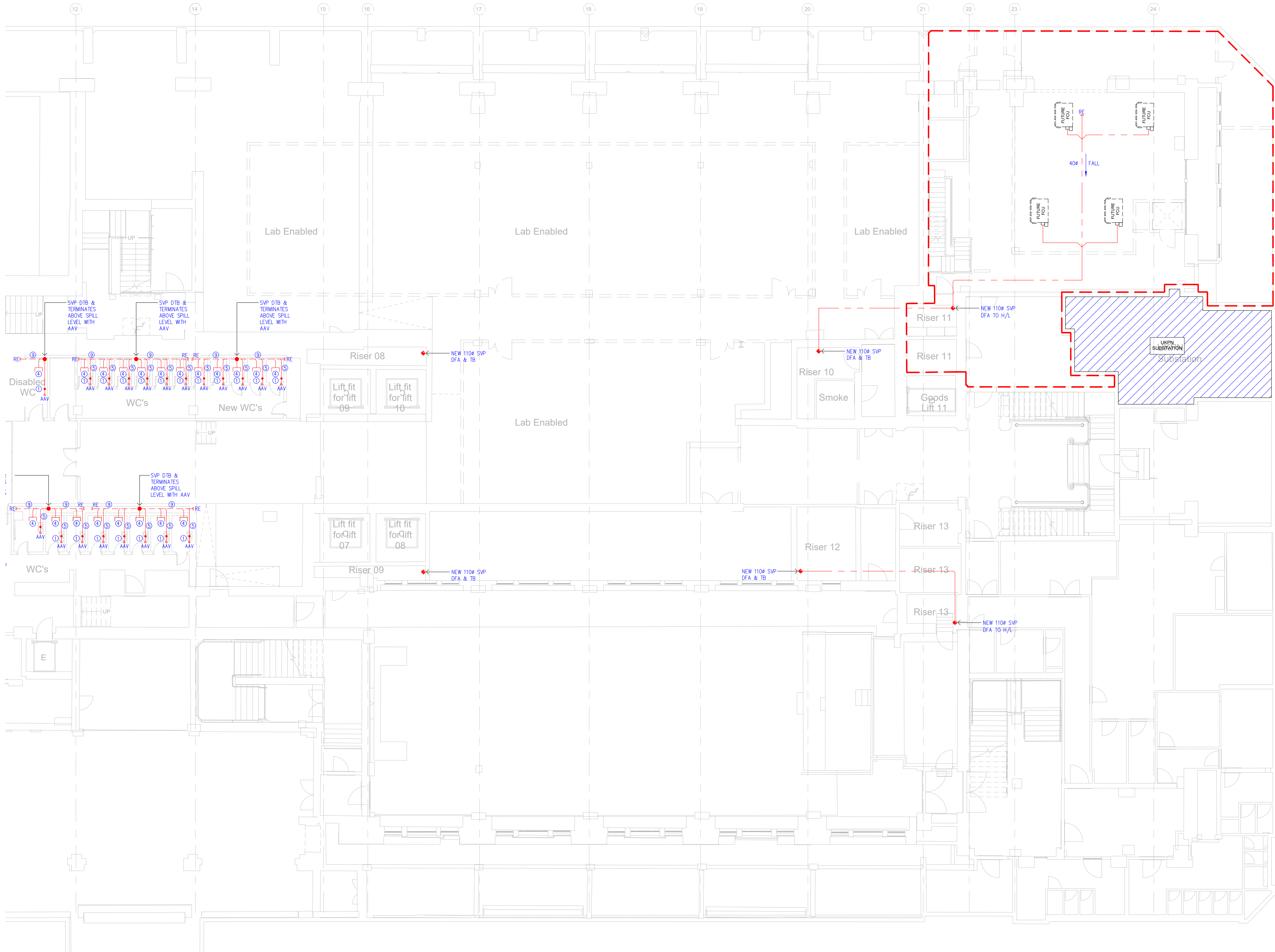
1 Fitzroy Square  
London W1T 5HF  
T +44 (0) 207 388 0952  
E london@kjtait.com  
W www.kjtait.com

PROJECT INFORMATION			
CLIENT	OXFORD VICTORIA HOUSE		
PROJECT	DEVELOPMENT LTD LONDON, WC1B 4DA		
DRAWING INFORMATION			
DRAWING TITLE	MECHANICAL SERVICES MEZZANINE DRAINAGE LAYOUT SHEET 1 of 2		
DESIGNED BY	AG	DATE	Sept. 2022
DRAWN BY	AG	KJT JOB No.	
SCALE	1:100 @ A1		L3221
JOB CODE	ORIGIN-VOL-LEVEL-TYPE-ROLE-CLASS NUMBER		SUIT-REV
L3221	KJT-01-MZ-DR-M-5201		S4-P02



- |                            |   |             |                     |
|----------------------------|---|-------------|---------------------|
| <b>PROJECT INFORMATION</b> |   |             |                     |
| CLIENT                     | OXFORD VICTORIA HOUSE   |             |                     |
| PROJECT                    | DEVELOPMENT LTD<br>LONDON, WC1B 4DA                                 |             |                     |
| <b>DRAWING INFORMATION</b> |   |             |                     |
| DRAWING TITLE              | MECHANICAL SERVICES<br>UPPER GROUND DRAINAGE LAYOUT<br>SHEET 1 of 2 |             |                     |
| DESIGNED BY                | AG  | DATE        | Sept. 2022          |
| DRAWN BY                   | AG  | KIT JOB No. |                     |
| SCALE                      | 1:100 @ A1  |             | L3221               |
| JOB CODE<br>L3221          | ORIGIN-VOL-LEVEL-TYPE-ROLE-CLASS NUMBER<br>KUT-01-UG-DR-M-5201      |             | SUIT- REV<br>SA-P02 |





- NOTES:
- THE DETAIL ON THIS DRAWING IS SPECIFIC TO INTERNAL ABOVE GROUND DRAINAGE AND EXCLUDES BELOW GROUND DRAINAGE, SURFACE WATER DRAINAGE AND RAINWATER DRAINAGE.
  - THE COMPLETED SYSTEM SHALL BE A GRAVITY DRAINED SYSTEM UTILISING WHITE/GREY UPVC PIPEWORK AND FITTINGS TO DISTRIBUTE WASTE FROM ALL APPLIANCES LOCATED WITHIN THE BUILDING TO APPROPRIATE POP-UP CONNECTIONS FROM THE BELOW GROUND DRAINAGE SYSTEM DETAILED BY OTHERS.
  - ALL NEW FINAL APPLIANCE CONNECTIONS WILL BE WHITE MUPVC INCORPORATING MUPVC TRAPS FOR SINK, BASIN AND URINAL CONNECTIONS AND PROPRIETARY UPVC PAN CONNECTORS FOR WC CONNECTIONS.
  - ALL TRAPS TO BE OF THE ANTI-SYPHON TYPE TO PROTECT TRAP CONNECTIONS FROM LOSS OF WATER SEAL.
  - ALL MAIN SOIL/WASTE VENT PIPES SHALL RISE TO ROOF LEVEL AND TERMINATE WITH A VENT COWL BEFORE DISCHARGING TO ATMOSPHERE (NOTE THAT SOME VENT PIPES WILL BE COLLECTED TOGETHER WITHIN THE UPPER FLOOR CEILING BEFORE RISING TO ROOF LEVEL TO REDUCE NUMBER OF ROOF PENETRATIONS).
  - WHERE INDICATED ON THE DRAWINGS APPLIANCES TO BE VENTED USING SUITABLY SIZED AIR ADMITTANCE VALVES.
  - FALLS ON SOIL WASTE PIPES AND VENT PIPES SHALL NOT FALL BELOW THE MINIMUM STATED IN BS EN 12056:2000.
  - SUITABLE ACCESS SHALL BE PROVIDED AND ALL CHANGES OF DIRECTION, AT EACH FLOOR LEVEL ABOVE BRANCH CONNECTIONS AND AT THE ALL POP-UP CONNECTIONS TO THE BELOW GROUND DRAINAGE.
  - WHERE PLASTIC PIPEWORK PASSES THROUGH ANY FIRE RATED WALLS, FLOORS, PARTITIONS OR CEILING A SUITABLY RATED INTUMESCENT FIRE SLEEVE/COLLAR SHALL BE INSTALLED IN ACCORDANCE WITH BS276 TO PROTECT THE PENETRATION.

- Abbreviations:
- 32x75mm DEEP SEAL MUPVC BOTTLE TRAP TO EACH WHB.
  - 42x75mm DEEP SEAL MUPVC TUBULAR TRAP TO EACH SINK.
  - 42x75mm DEEP SEAL MUPVC BOTTLE TRAP SERVING URINAL BOWL.
  - 110x MULTIKWIC CONNECTOR TO WC PAN.
  - 32x MUPVC WP.
  - 42x MUPVC WP.
  - 50x MUPVC WP.
  - 82x UPVC WP.
  - 110x UPVC SP.
  - CLAY TRAP WITH 50x MUPVC INLET & OUTLET.
  - 50x INTUMESCENT FIRE COLLAR/SLEEVE.
  - 82x INTUMESCENT FIRE COLLAR/SLEEVE.
  - 110x INTUMESCENT FIRE COLLAR/SLEEVE.

- Legend:
- PIPEWORK WITHIN CEILING VOID
  - PIPEWORK AT HIGH LEVEL
  - PIPEWORK AT LOW LEVEL
  - PIPEWORK BELOW FLOOR SLAB
- |     |                      |     |                                    |
|-----|----------------------|-----|------------------------------------|
| SVP | SOIL VENT PIPE       | AAV | AIR ADMITTANCE VALVE               |
| WVP | WASTE VENT PIPE      |     | PIPEWORK FROM ABOVE                |
| VP  | VENT PIPE            |     | PIPEWORK FROM HIGH LEVEL/LOW LEVEL |
| SP  | SOIL PIPE            |     | VENT PIPE                          |
| S/S | STUB STACK           |     | STUB STACK                         |
| WP  | WASTE PIPE           |     | FROM ABOVE                         |
| RE  | RODDING EYE          |     | FROM BELOW                         |
| BC  | BLANK CAP            |     | TO ABOVE                           |
| FFL | FINISHED FLOOR LEVEL |     | TO BELOW                           |
| AP  | ACCESS PIPE          |     | HIGH LEVEL                         |
|     |                      |     | LOW LEVEL                          |

S2 - P02	20/01/2023	LBC ISSUE	AG	MT
UNIT 1 SERVICES ADDED				
S2 - P01	16/12/2022	TENDER ISSUE	AG	MT
SUIT-REV	DATE	DESCRIPTION	DRN	CHK
STATUS				

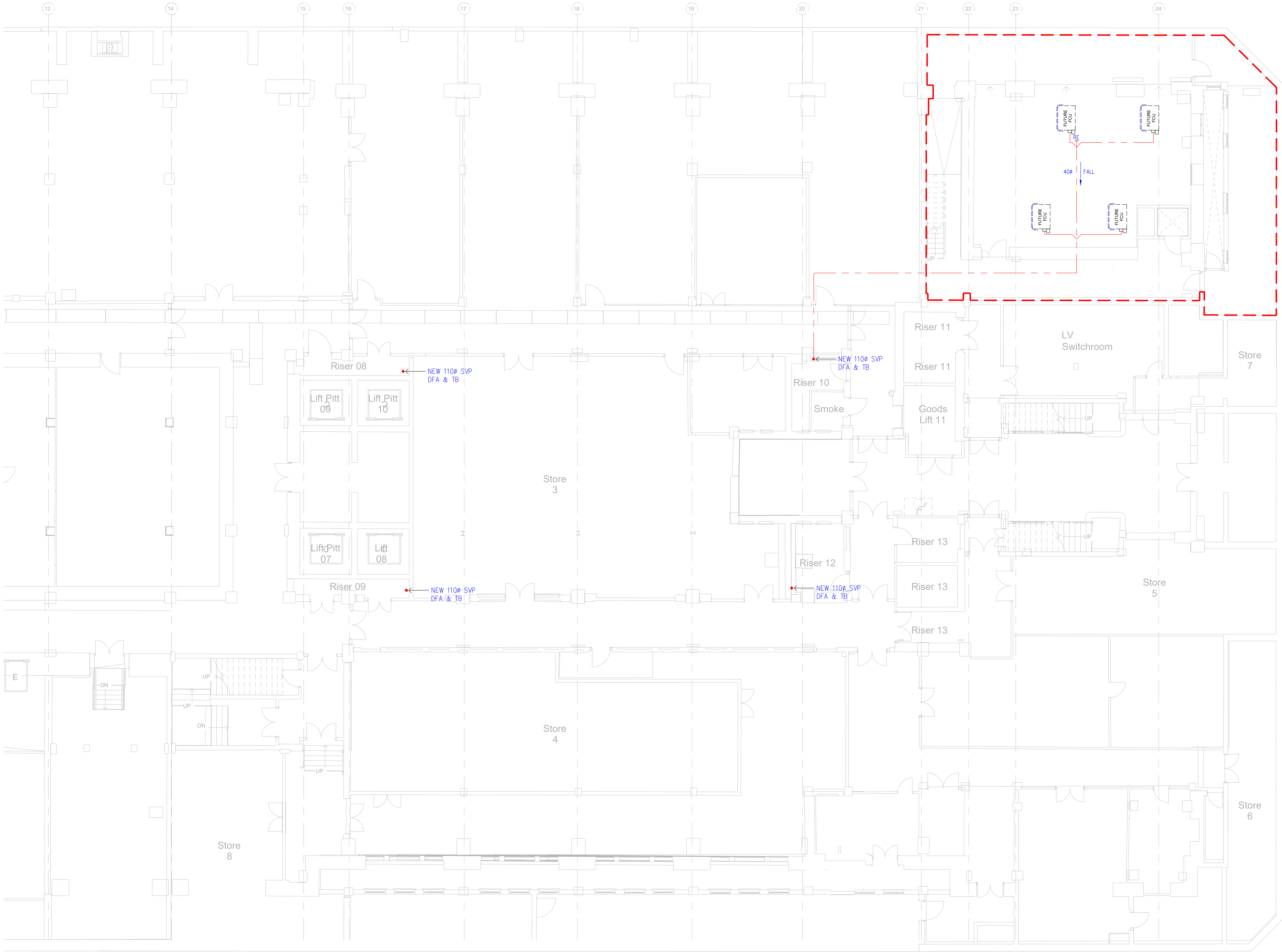
## FOR INFORMATION

THIS DRAWING IS COPYRIGHT. DO NOT SCALE FROM DRAWING. THE CONTRACTOR AND THEIR SUB-CONTRACTORS ARE TO VERIFY ALL DIMENSIONS ON SITE BEFORE MAKING SHOP DRAWINGS OR COMMENCING MANUFACTURE.

**KJ TAIT**  
ENGINEERS

1 Fitzroy Square  
London W1T 5HF  
T +44 (0) 207 388 0952  
E london@kjtait.com  
W www.kjtait.com

PROJECT INFORMATION			
CLIENT	OXFORD VICTORIA HOUSE		
PROJECT	DEVELOPMENT LTD LONDON, WC1B 4DA		
DRAWING INFORMATION			
DRAWING TITLE	MECHANICAL SERVICES BASEMENT 1 DRAINAGE LAYOUT SHEET 2 of 2		
DESIGNED BY	AG	DATE	Sept. 2022
DRAWN BY	AG	KJT JOB No.	L3221
SCALE	1:100 @ A1		L3221
JOB CODE	ORIGIN-VOL-LEVEL-TYPE-ROLE-CLASS NUMBER KJT-02-B1-DR-M-5201		SUIT-REV S4-P02



NOTES:

- THE DETAIL ON THIS DRAWING IS SPECIFIC TO INTERNAL ABOVE GROUND DRAINAGE AND EXCLUDES BELOW GROUND DRAINAGE, SURFACE WATER DRAINAGE AND RAINWATER DRAINAGE.
- THE COMPLETED SYSTEM SHALL BE A GRAVITY DRAINED SYSTEM UTILISING WHITE/GREY UPVC PIPEWORK AND FITTINGS TO DISTRIBUTE WASTE FROM ALL APPLIANCES LOCATED WITHIN THE BUILDING TO APPROPRIATE POP-UP CONNECTIONS FROM THE BELOW GROUND DRAINAGE SYSTEM DETAILED BY OTHERS.
- ALL NEW FINAL APPLIANCE CONNECTIONS WILL BE WHITE MUPVC INCORPORATING MUPVC TRAPS FOR SINK, BASIN AND URINAL CONNECTIONS AND PROPRIETARY UPVC PAN CONNECTORS FOR WC CONNECTIONS.
- ALL TRAPS TO BE OF THE ANTI-SYPHON TYPE TO PROTECT TRAP CONNECTIONS FROM LOSS OF WATER SEAL.
- ALL MAIN SOIL/WASTE VENT PIPES SHALL RISE TO ROOF LEVEL AND TERMINATE WITH A VENT COWL BEFORE DISCHARGING TO ATMOSPHERE (NOTE THAT SOME VENT PIPES WILL BE COLLECTED TOGETHER WITHIN THE UPPER FLOOR CEILING BEFORE RISING TO ROOF LEVEL TO REDUCE NUMBER OF ROOF PENETRATIONS).
- WHERE INDICATED ON THE DRAWINGS APPLIANCES TO BE VENTED USING SUITABLY SIZED AIR ADMITTANCE VALVES.
- FALLS ON SOIL WASTE PIPES AND VENT PIPES SHALL NOT FALL BELOW THE MINIMUM STATED IN BS EN 12056:2000.
- SUITABLE ACCESS SHALL BE PROVIDE AND ALL CHANGES OF DIRECTION, AT EACH FLOOR LEVEL ABOVE BRANCH CONNECTIONS AND AT THE ALL POP-UP CONNECTIONS TO THE BELOW GROUND DRAINAGE.
- WHERE PLASTIC PIPEWORK PASSES THROUGH ANY FIRE RATED WALLS, FLOORS, PARTITIONS OR CEILING A SUITABLY RATED INTUMESCENT FIRE SLEEVE/COLLAR SHALL BE INSTALLED IN ACCORDANCE WITH BS276 TO PROTECT THE PENETRATOR.

Abbreviations:

- 1 32x75mm DEEP SEAL MUPVC BOTTLE TRAP TO EACH WHB.
- 2 42x75mm DEEP SEAL MUPVC TUBULAR TRAP TO EACH SINK.
- 3 42x75mm DEEP SEAL MUPVC BOTTLE TRAP SERVING URINAL BOWL.
- 4 110ø MULTIKWIC CONNECTOR TO WC PAN.
- 5 32ø MUPVC WP.
- 6 42ø MUPVC WP.
- 7 50ø MPVC WP.
- 8 82ø UPVC WP.
- 9 110ø UPVC SP.
- 10 CLAY TRAP WITH 50ø MUPVC INLET & OUTLET.
- 11 50ø INTUMESCENT FIRE COLLAR/SLEEVE.
- 12 82ø INTUMESCENT FIRE COLLAR/SLEEVE.
- 13 110ø INTUMESCENT FIRE COLLAR/SLEEVE.

Legend:

----	PIPEWORK WITHIN CEILING VOID		
----	PIPEWORK AT HIGH LEVEL		
----	PIPEWORK AT LOW LEVEL		
-----	PIPEWORK BELOW FLOOR SLAB		
SVP	SOIL VENT PIPE	AAV	AIR ADMITTANCE VALVE
WVP	WASTE VENT PIPE	●	PIPEWORK FROM ABOVE
VP	VENT PIPE	●	PIPEWORK FROM HIGH LEVEL/LOW LEVEL
SP	SOIL PIPE	○	VENT PIPE
S/S	STUB STACK	⊗	STUB STACK
WP	WASTE PIPE	FA	FROM ABOVE
RE	RODDING EYE	FB	FROM BELOW
BC	BLANK CAP	TA	TO ABOVE
FFL	FINISHED FLOOR LEVEL	TB	TO BELOW
AP	ACCESS PIPE	HL	HIGH LEVEL
		LL	LOW LEVEL

S4 - P02	20/01/2023	LBC ISSUE	AG	MT
S2 - P01	16/12/2022	TENDER ISSUE	AG	MT
SUIT-REV	DATE	DESCRIPTION	DRN	CHK
STATUS				

FOR INFORMATION

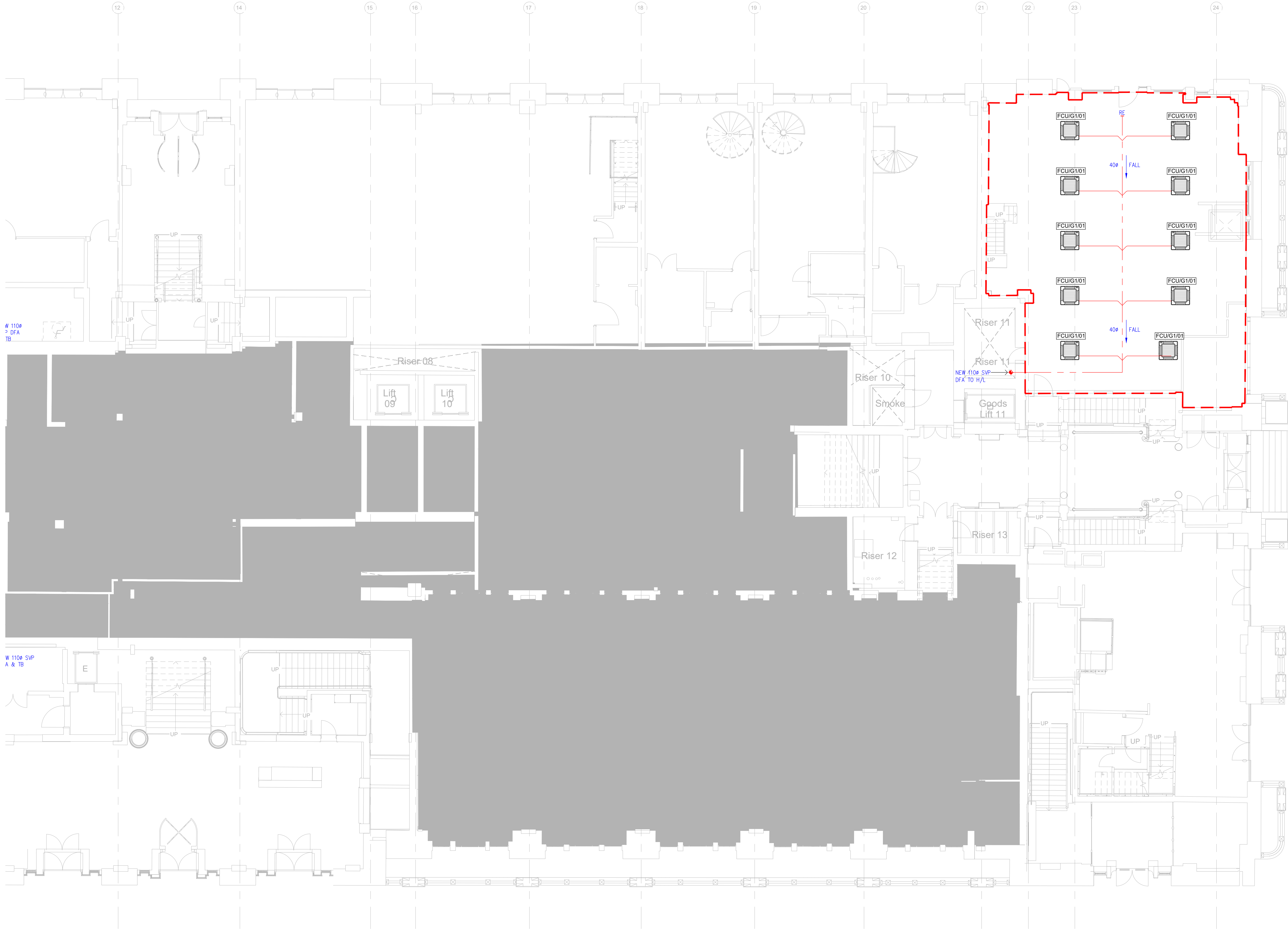
THIS DRAWING IS COPYRIGHT. DO NOT SCALE FROM DRAWING. THE CONTRACTOR AND THEIR SUB-CONTRACTORS ARE TO VERIFY ALL DIMENSIONS ON SITE BEFORE MAKING SHOP DRAWINGS OR COMMENCING MANUFACTURE.

KJ TAITENGINEERS

1 Fitzroy Square  
London W1T 5HF  
T +44 (0) 207 388 0952  
E london@kjtait.com  
W www.kjtait.com

PROJECT INFORMATION			
CLIENT	OXFORD VICTORIA HOUSE		
PROJECT	DEVELOPMENT LTD LONDON, WC1B 4DA		
DRAWING INFORMATION			
DRAWING TITLE	MECHANICAL SERVICES BASEMENT 2 LAB DRAINAGE LAYOUT SHEET 2 of 2		
DESIGNED BY	AG	DATE	Sept. 2022
DRAWN BY	AG	KJT JOB No.	
SCALE	1:100 @ A1		L3221
JOB CODE	ORIGIN/VOL-LEVEL-TYPE-ROLE-CLASS NUMBER	SUIT-REV	
L3221	KJT-02-B2-DR-M-5201	S4-P03	





NOTES:

- THE DETAIL ON THIS DRAWING IS SPECIFIC TO INTERNAL ABOVE GROUND DRAINAGE AND EXCLUDES BELOW GROUND DRAINAGE, SURFACE WATER DRAINAGE AND RAINWATER DRAINAGE.
- THE COMPLETED SYSTEM SHALL BE A GRAVITY DRAINED SYSTEM UTILISING WHITE/GREY UPVC PIPEWORK AND FITTINGS TO DISTRIBUTE WASTE FROM ALL APPLIANCES LOCATED WITHIN THE BUILDING TO APPROPRIATE POP-UP CONNECTIONS FROM THE BELOW GROUND DRAINAGE SYSTEM DETAILED BY OTHERS.
- ALL NEW FINAL APPLIANCE CONNECTIONS WILL BE WHITE MUPVC INCORPORATING MUPVC TRAPS FOR SINK, BASIN AND URINAL CONNECTIONS AND PROPRIETARY UPVC PAN CONNECTORS FOR WC CONNECTIONS.
- ALL TRAPS TO BE OF THE ANTI-SYPHON TYPE TO PROTECT TRAP CONNECTIONS FROM LOSS OF WATER SEAL.
- ALL MAIN SOIL/WASTE VENT PIPES SHALL RISE TO ROOF LEVEL AND TERMINATE WITH A VENT COWL BEFORE DISCHARGING TO ATMOSPHERE (NOTE THAT SOME VENT PIPES WILL BE COLLECTED TOGETHER WITHIN THE UPPER FLOOR CEILING BEFORE RISING TO ROOF LEVEL TO REDUCE NUMBER OF ROOF PENETRATIONS).
- WHERE INDICATED ON THE DRAWINGS APPLIANCES TO BE VENTED USING SUITABLY SIZED AIR ADMITTANCE VALVES.
- FALLS ON SOIL WASTE PIPES AND VENT PIPES SHALL NOT FALL BELOW THE MINIMUM STATED IN BS EN 12056:2000.
- SUITABLE ACCESS SHALL BE PROVIDE AND ALL CHANGES OF DIRECTION, AT EACH FLOOR LEVEL ABOVE BRANCH CONNECTIONS AND AT THE ALL POP-UP CONNECTIONS TO THE BELOW GROUND DRAINAGE.
- WHERE PLASTIC PIPEWORK PASSES THROUGH ANY FIRE RATED WALLS, FLOORS, PARTITIONS OR CEILING A SUITABLY RATED INTUMESCENT FIRE SLEEVE/COLLAR SHALL BE INSTALLED IN ACCORDANCE WITH BS276 TO PROTECT THE PENETRATOR.

Abbreviations:

- 32x75mm DEEP SEAL MUPVC BOTTLE TRAP TO EACH WHB.
- 42x75mm DEEP SEAL MUPVC TUBULAR TRAP TO EACH SINK.
- 42x75mm DEEP SEAL MUPVC BOTTLE TRAP SERVING URINAL BOWL.
- 1100 MULTIKWIC CONNECTOR TO WC PAN.
- 320 MUPVC WP.
- 420 MUPVC WP.
- 500 MPVC WP.
- 820 UPVC WP.
- 1100 UPVC SP.
- CLAY TRAP WITH 500 MUPVC INLET & OUTLET.
- 500 INTUMESCENT FIRE COLLAR/SLEEVE.
- 820 INTUMESCENT FIRE COLLAR/SLEEVE.
- 1100 INTUMESCENT FIRE COLLAR/SLEEVE.

Legend:

- PIPEWORK WITHIN CEILING VOID
- PIPEWORK AT HIGH LEVEL
- PIPEWORK AT LOW LEVEL
- PIPEWORK BELOW FLOOR SLAB
- SVP SOIL VENT PIPE
- WVP WASTE VENT PIPE
- VP VENT PIPE
- SP SOIL PIPE
- S/S STUB STACK
- WP WASTE PIPE
- RE RODDING EYE
- BC BLANK CAP
- FFL FINISHED FLOOR LEVEL
- AP ACCESS PIPE
- AAV AIR ADMITTANCE VALVE
- PIPEWORK FROM ABOVE
- PIPEWORK FROM HIGH LEVEL/LOW LEVEL
- VENT PIPE
- STUB STACK
- FA FROM ABOVE
- FB FROM BELOW
- TA TO ABOVE
- TB TO BELOW
- HL HIGH LEVEL
- LL LOW LEVEL

S4 - P02	20/01/2023	LBC ISSUE	AG	MT
S2 - P01	28/10/2022	STAGE 3 ISSUE	AG	MT
SUIT-REV	DATE	DESCRIPTION	DRN	CHK
STATUS				

FOR INFORMATION

THIS DRAWING IS COPYRIGHT. DO NOT SCALE FROM DRAWING. THE CONTRACTOR AND THEIR SUB-CONTRACTORS ARE TO VERIFY ALL DIMENSIONS ON SITE BEFORE MAKING SHOP DRAWINGS OR COMMENCING MANUFACTURE.

KJ TAITENGINEERS

1 Fitzroy Square  
London W1T 5HF  
T +44 (0) 207 388 0952  
E london@kjtait.com  
W www.kjtait.com

PROJECT INFORMATION				
CLIENT	OXFORD VICTORIA HOUSE			
PROJECT	DEVELOPMENT LTD LONDON, WC1B 4DA			
DRAWING INFORMATION				
DRAWING TITLE	MECHANICAL SERVICES LOWER GROUND DRAINAGE LAYOUT SHEET 2 of 2			
DESIGNED BY	AG	DATE	Sept. 2022	
DRAWN BY	AG	KJT JOB No.	L3221	
SCALE	1:100 @ A1			
JOB CODE	L3221	ORIGIN/VOL/LEVEL-TYPE-ROLE-CLASS NUMBER	KJT-02-LG-DR-M-5201	SUIT-REV S4-P01