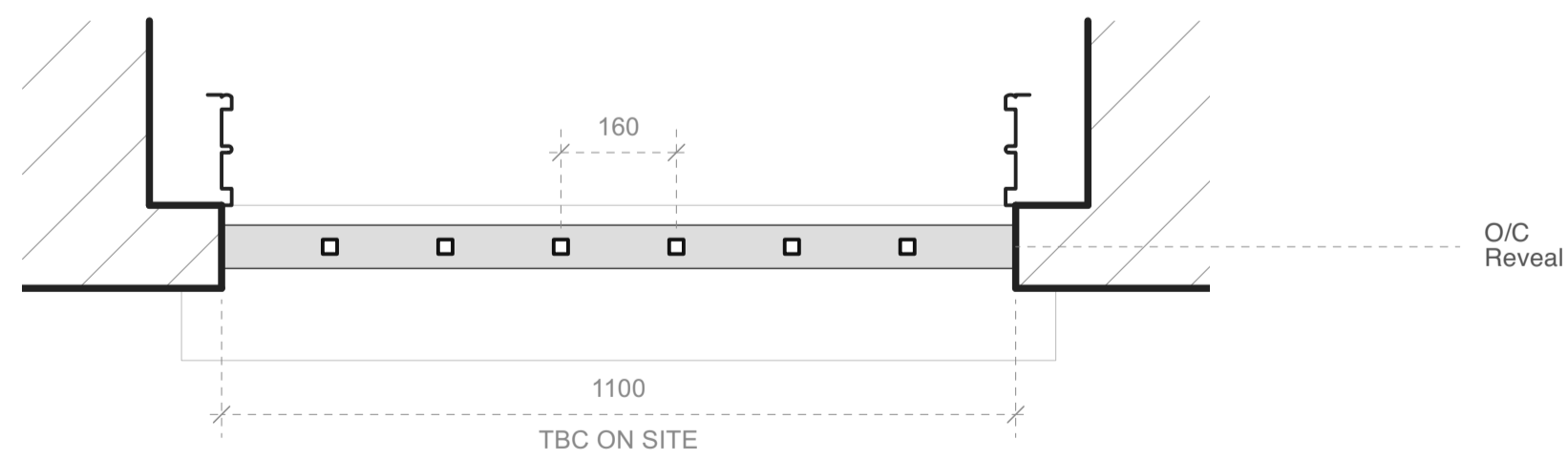


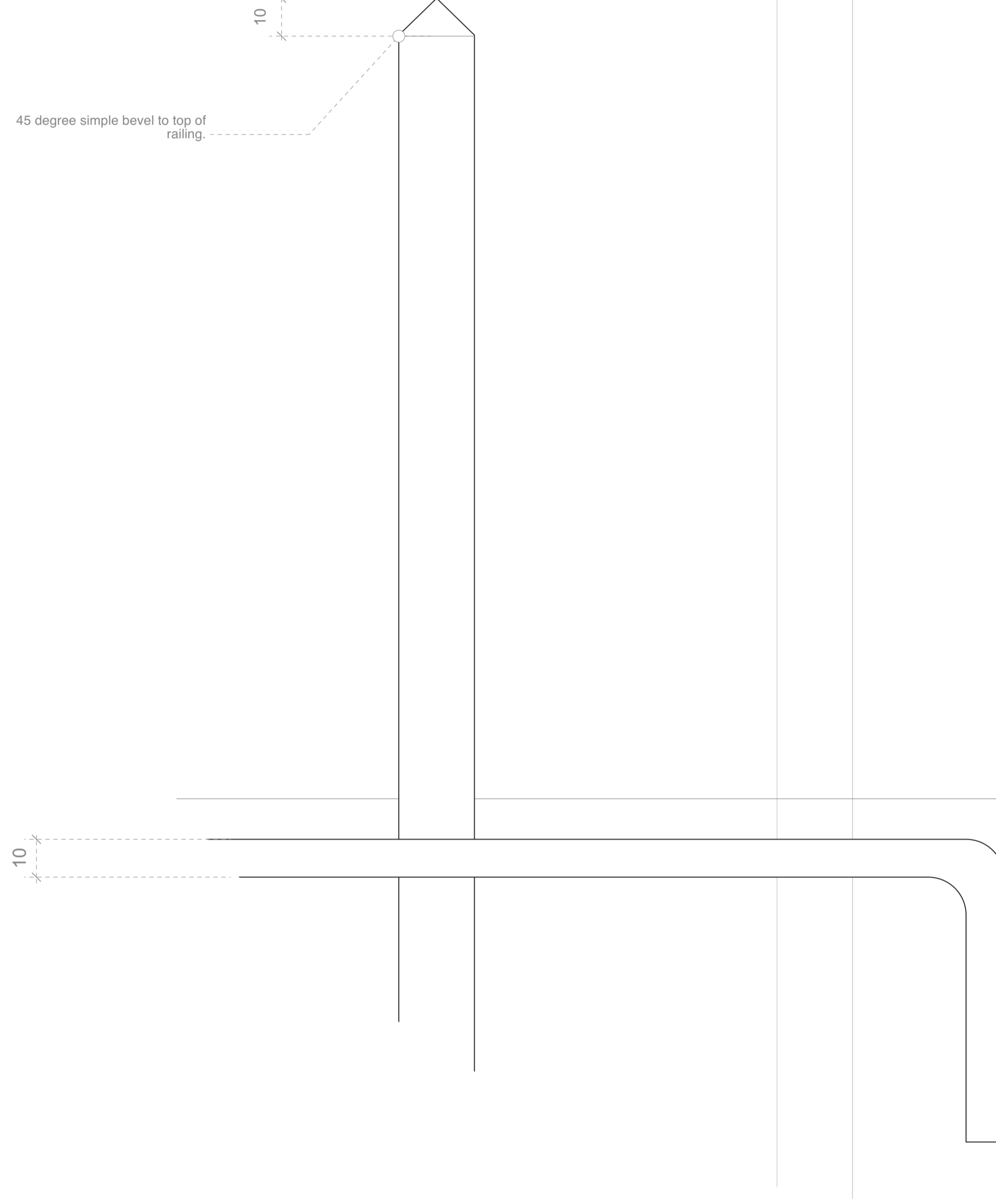
P510-A
ELEVATION
1:10@A1, 1:20@A3



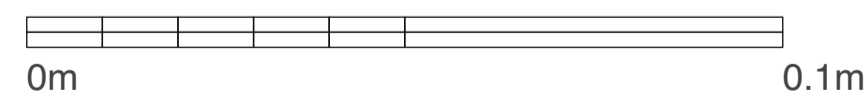
P510-B
PLAN
1:10@A1, 1:20@A3



45 degree simple bevel to top of railing.



P510-C
DETAIL
1:1@A1, 1:2@A3



General Notes

- All dimensions to be verified on site
- To be read in conjunction with all relevant documents
- In the event of discrepancy notify the Architect immediately
- All steel structural elements to be finished with intumescent coating, 30 minutes fire resistance. For all structural elements and connection see SE drawings.
- This document is copyright of Hugh Cullum Architects Ltd

Issue Status

- SK Sketch
- T Tender
- P Permissions
- D Demolition
- E Existing Condition
- C Contract

| rev | note | date | (drawn by/checked by) |
|-----|------------------|----------|-----------------------|
| () | Issued to Camden | 03.05.23 | OW / TS & HC |

**GENERAL NOTES / SPECIFICATION
WINDOW SECURITY RAILINGS**

Railings to prevent access to inside of house. To be securely bolted to face of window reveal.

To be steel, black gloss painted to match appearance of boundary railings at front. Railings to be manufactured and set out according to dimensions shown on this page. Steel section dimensions are nominal and may be subject to slight variations as recommended by contractor/supplier.

ISSUED

LB CAMDEN
3rd May 2023

HUGH CULLUM
ARCHITECTS LTD
Bloomsbury Design
61b Judd Street
London WC1H 9QT
t 020 7383 7647
f 020 7387 7645
mail@hughcullum.com

24 John Street
~~ISSUE NUMBER 03 - 230426~~
Planning Conditions
DETAIL
Security Railings
AS NOTED
May 2023
JS024 - P510 ()