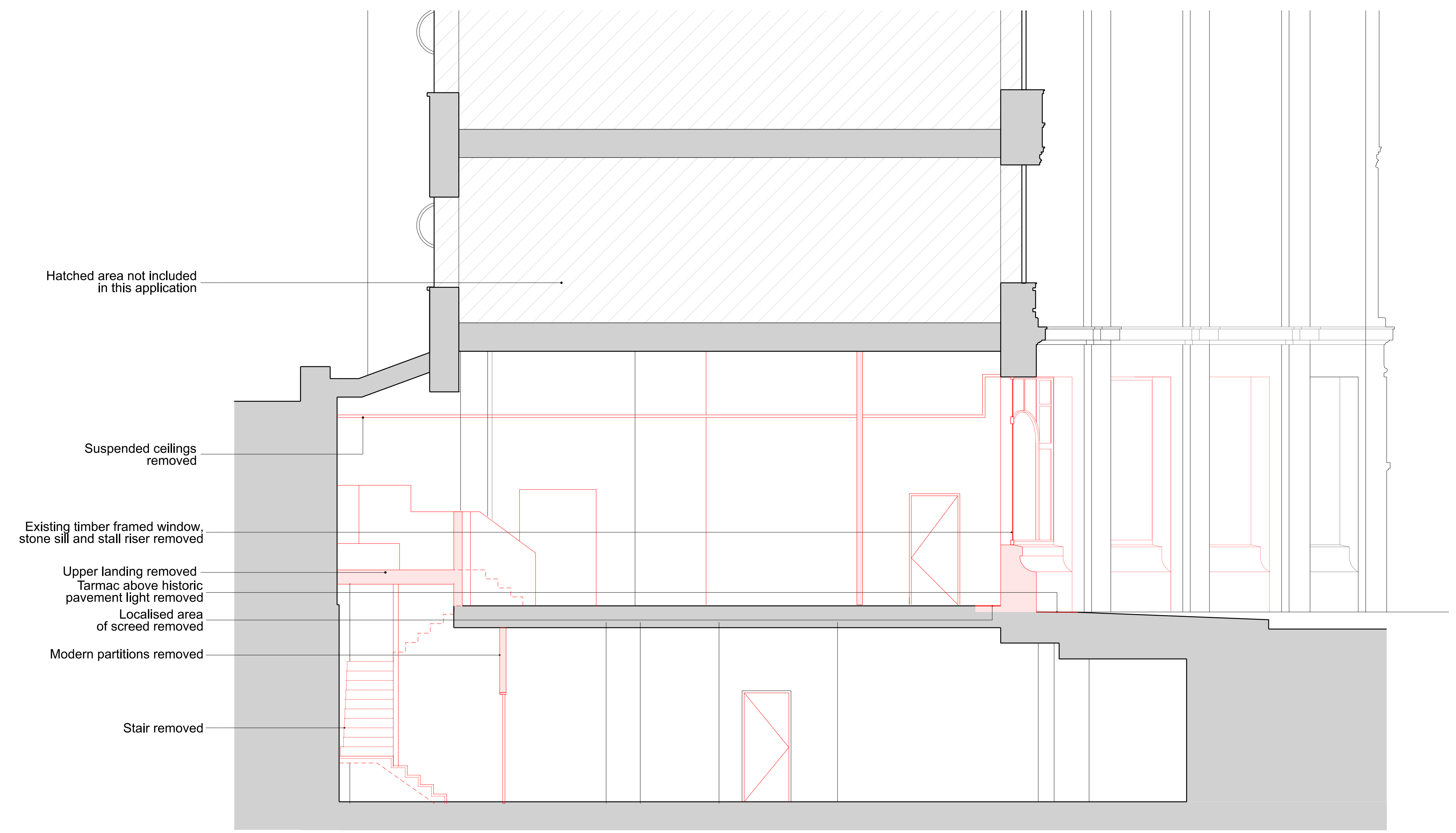


NOTES
 DO NOT SCALE FROM THIS DRAWING.
 CONTRACTOR TO CHECK ALL DIMENSIONS ON SITE.
 ANY DISCREPANCIES TO BE REPORTED TO THE ARCHITECT IMMEDIATELY.
 COPYRIGHT MICA ARCHITECTS LTD ©
 Text

- Demolition
- Demolition walls (Section)
- ▨ Demolition walls (elevation)



- Hatched area not included in this application
- Suspended ceilings removed
- Existing timber framed window, stone sill and stall riser removed
- Upper landing removed
- Tarmac above historic pavement light removed
- Localised area of screed removed
- Modern partitions removed
- Stair removed



REVISIONS			
REV	DATE	DESCRIPTION	
PL1	17.03.23	PLANNING ISSUE	
P1	05.03.23	DRAFT PLANNING ISSUE	

KEY PLAN	

STATUS
 PLANNING

MICA
 123 Camden High Street London NW1 7JR
 T: 020 7284 1727 F: 020 7267 7626
 info@micaarchitects.com www.micaarchitects.com

JOB
NORFOLK HOUSE RETAIL UNIT
 127-128 High Holborn
 Holborn, London

TITLE
 Existing - Demolition
 Section CC

DRG # **741-MICA-NH-B1-DR-A-19131** REV/ **PL1**

CHECKED	DRAWN	SCALE	SIZE	REV/DATE
GM	DRM	1:50	A1	17.03.23