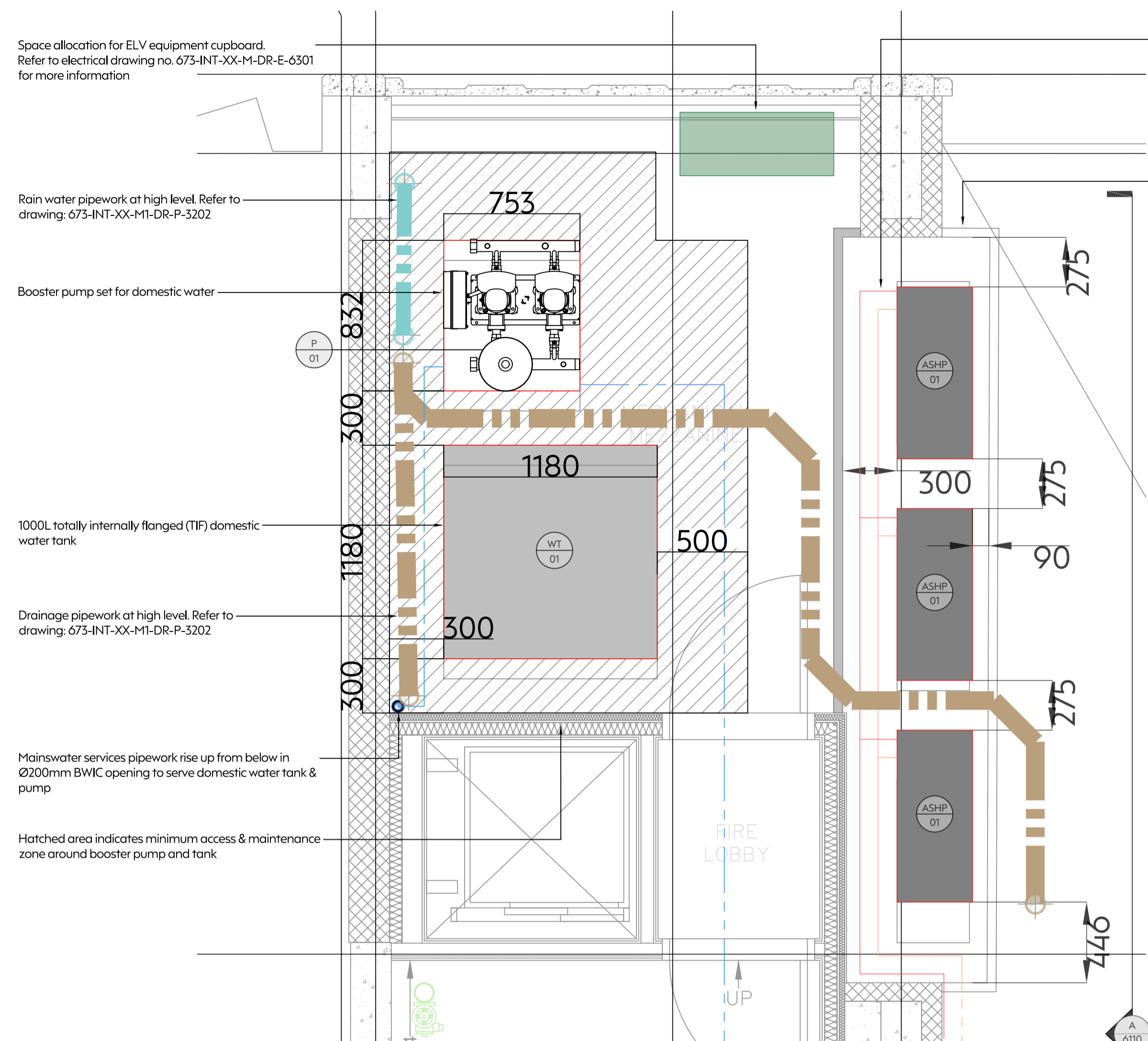


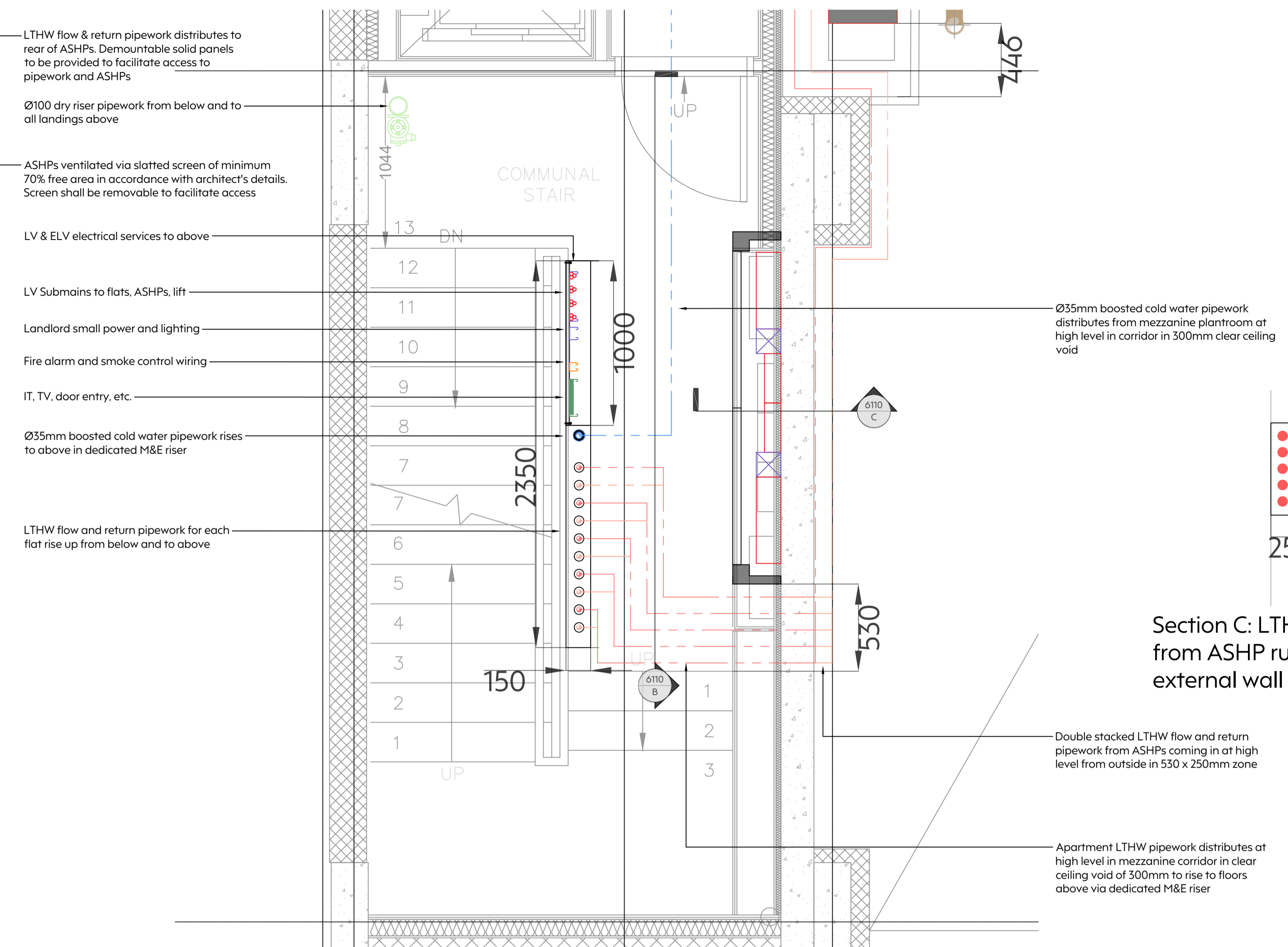


NOTES

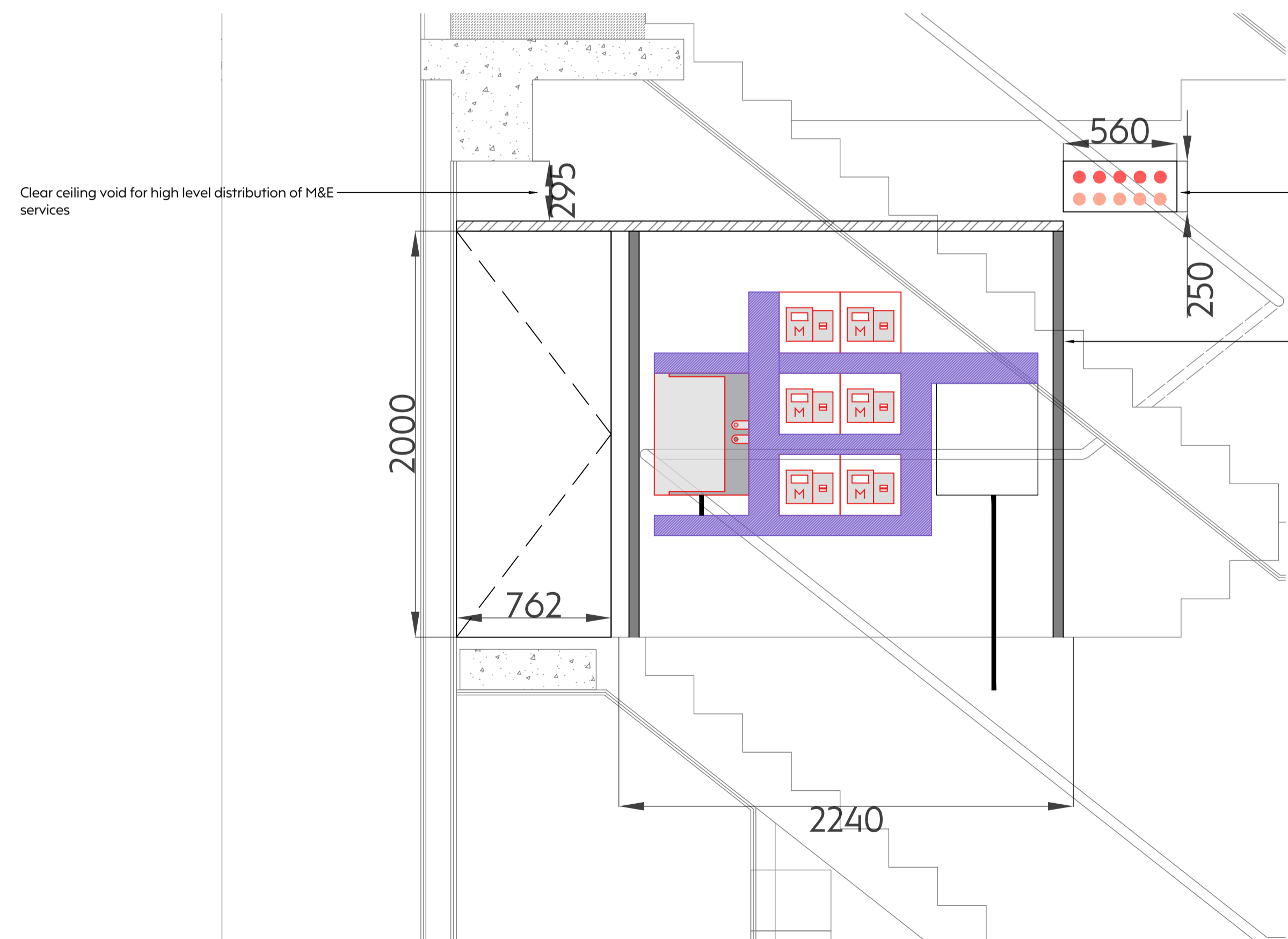
1. Do not scale this drawing
2. This drawing shall be read in conjunction with all MEP drawings, schedules & specifications and relevant architectural and structural drawings & specifications
3. This drawing has been produced for design purposes only and is not an installation or working drawing, any installation based on this drawing is at the Contractor's risk.
4. Refer to architectural drawings for setting out of all plant & equipment.



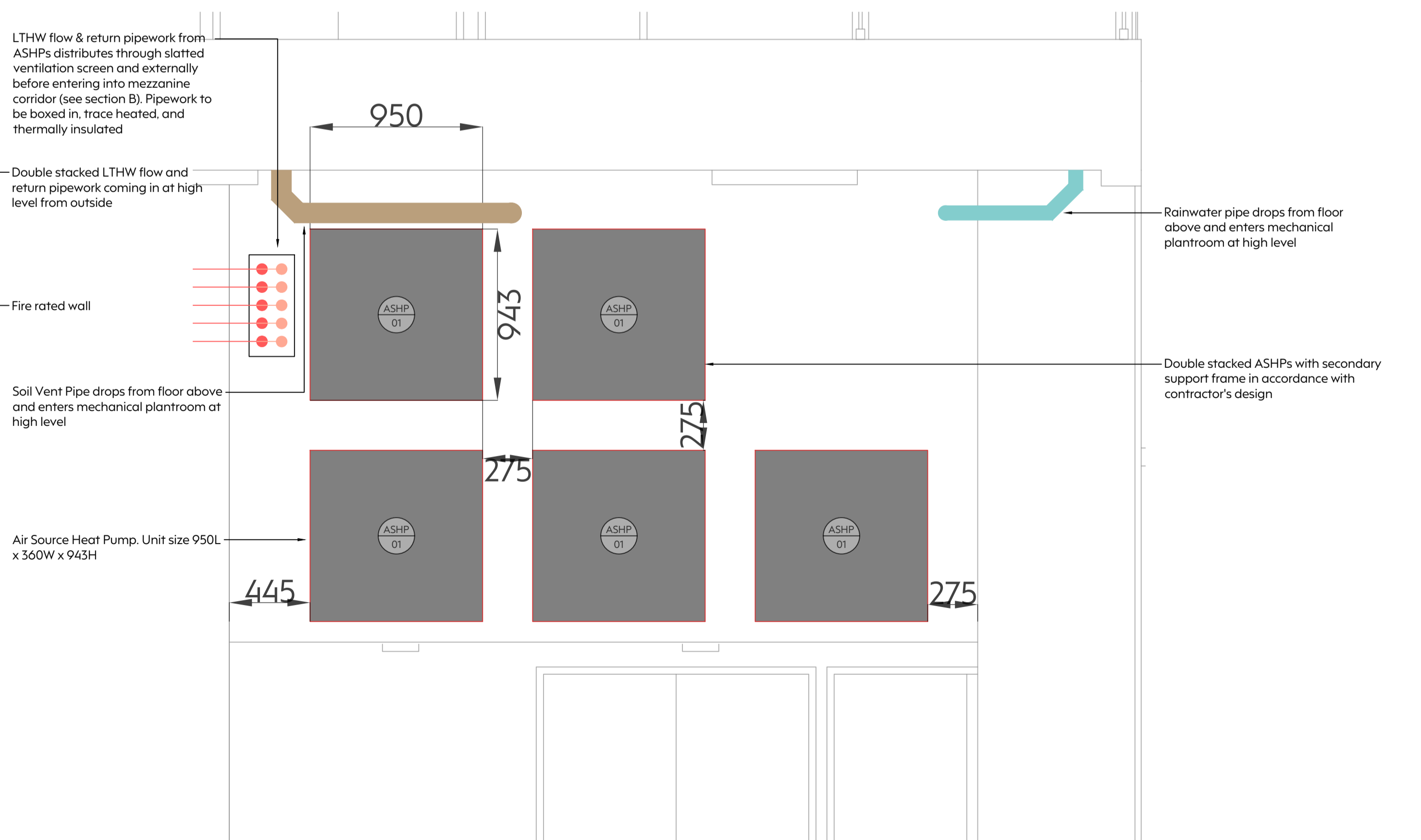
Mechanical Plantroom Layout (1:20)



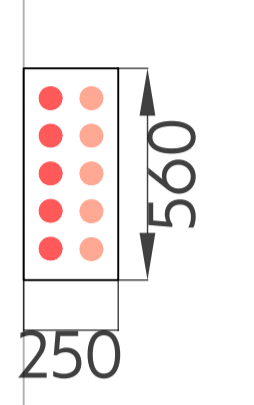
Mezzanine Corridor M&E Riser and Electrical Cupboard (1:20)



Section B: Mezzanine Electrical Cupboard and LTHW Distribution (1:20)



Section A: ASHP Configuration (1:20)



Section C: LTHW pipework from ASHP running on external wall

Double stacked LTHW flow and return pipework from ASHPs coming in at high level from outside in 530 x 250mm zone

Apartment LTHW pipework distributes at high level in mezzanine corridor in clear ceiling void of 300mm to rise to floors above via dedicated M&E riser

PROJECT

155 Drummond Street
London, NW1 2PB

Client

HGG London
The Old Rectory
29 Martin Lane
EC4R 0DJ
London

Architect

Bureau de Change
Studio 3
18 Coronet St
N1 6HD
London

DRAWING TITLE

Combined Services
M&E Plantrooms & Cupboards
Mezzanine Floor

DRAWING STATUS

Draft Tender

Scale

1:20

Size

A1

Engineer

JW

Date

15.03.2023

Stage

4

Checked

JM

DRAWING NO.

673-INT-XX-M1-DR-MEP-6110

REV.

T1