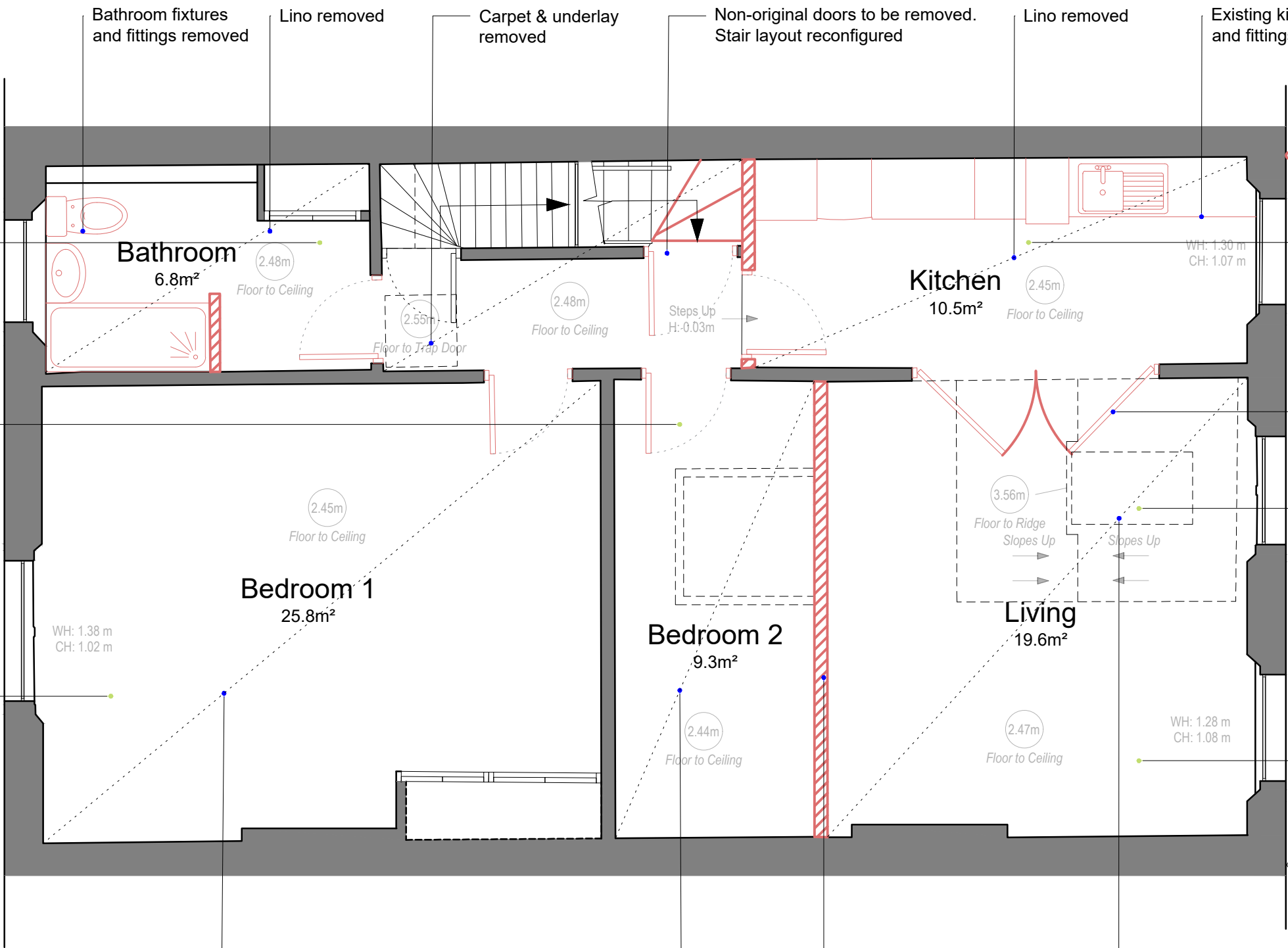
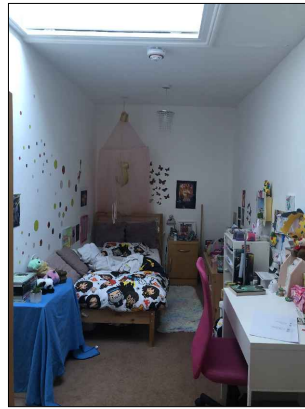
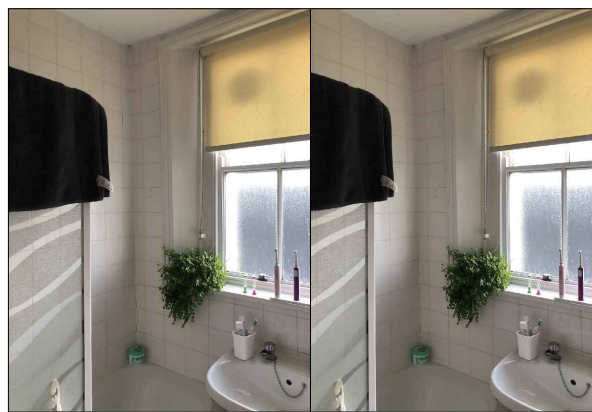


Localised repairs to slates/flashing and general clean to roof/gutters

2 / Existing Roof Plan
1:50



Note: Existing timber floorboards retained in-situ

1 / Existing Third Floor Plan
1:50

DO NOT SCALE

THE CONTRACTOR IS TO CHECK AND VERIFY ALL BUILDING AND SITE DIMENSIONS, LEVELS AND SEWER INVERT LEVELS AT CONNECTION POINTS BEFORE WORK STARTS.

THIS DRAWING IS TO BE READ AND CHECKED IN CONJUNCTION WITH ENGINEERS AND OTHER SPECIALIST DRAWINGS.

THE DRAWING AND THE WORKS DEPICTED ARE THE COPYRIGHT OF HAWORTH TOMPKINS LTD AND MAY NOT BE REPRODUCED EXCEPT BY WRITTEN PERMISSION.

NOTES

TO BE READ IN CONJUNCTION WITH GA PLANS, SECTIONS AND ELEVATIONS.

— FITTING / FIXTURE REMOVED

WALL / ELEMENT REMOVED

GENERAL STRIP OUT NOTES

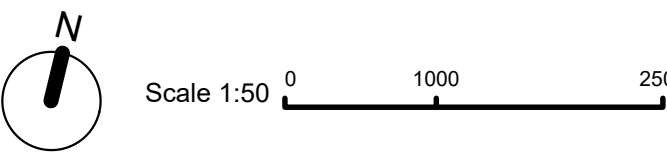
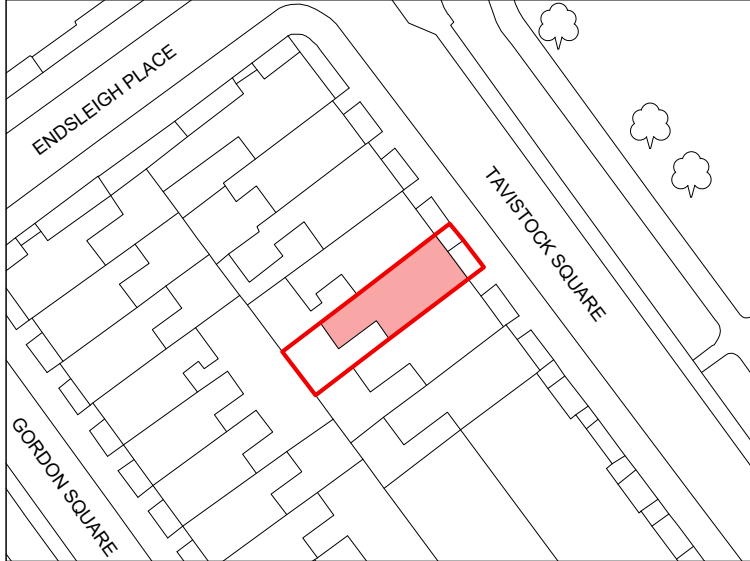
ALL MEP SERVICES TO BE STRIPPED-OUT LEVELS GF - 3, EXCLUDING FIRE ALARM SYSTEMS BUT INCLUDING:

CABLING, SWITCHES, SOCKETS, LIGHT FITTINGS

DOMESTIC HOT & COLD WATER / HEATING PIPEWORK, RADIATORS, SANITARY FITTINGS, KITCHENS FITTINGS & APPLIANCES, GAS BOILERS (METERS TO BE RETAINED)

EXTRACT COWLS TO FRONT ELEVATION

KEY PLAN



REV	DATE	DESCRIPTION
P01	28/04/23	PLANNING

HaworthTompkins

33 Greenwood Place, London, NW5 1LB
+44 (0) 20 7250 3225 | www.haworthtompkins.com

JOB	2266 UoL Tavistock Square		
DRG	Existing Third Floor & Roof Plan		
DRG No	2266-HTL-ZZ-ZZ-DR-A-(01)102	REV	P01
SCALE	1:50@A1	DATE	28/04/23
DRAWN	GS	INSPECTED BY	NH
STATUS	PLANNING		