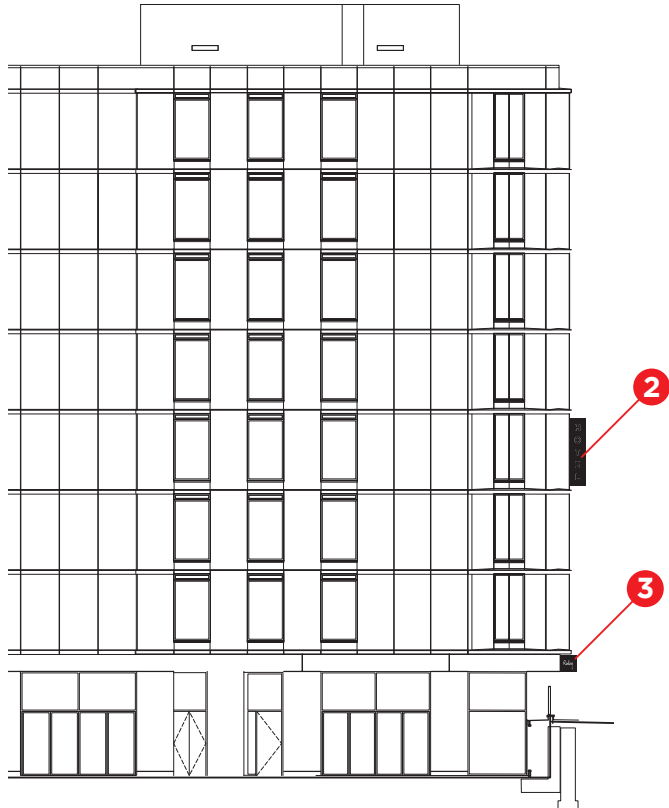
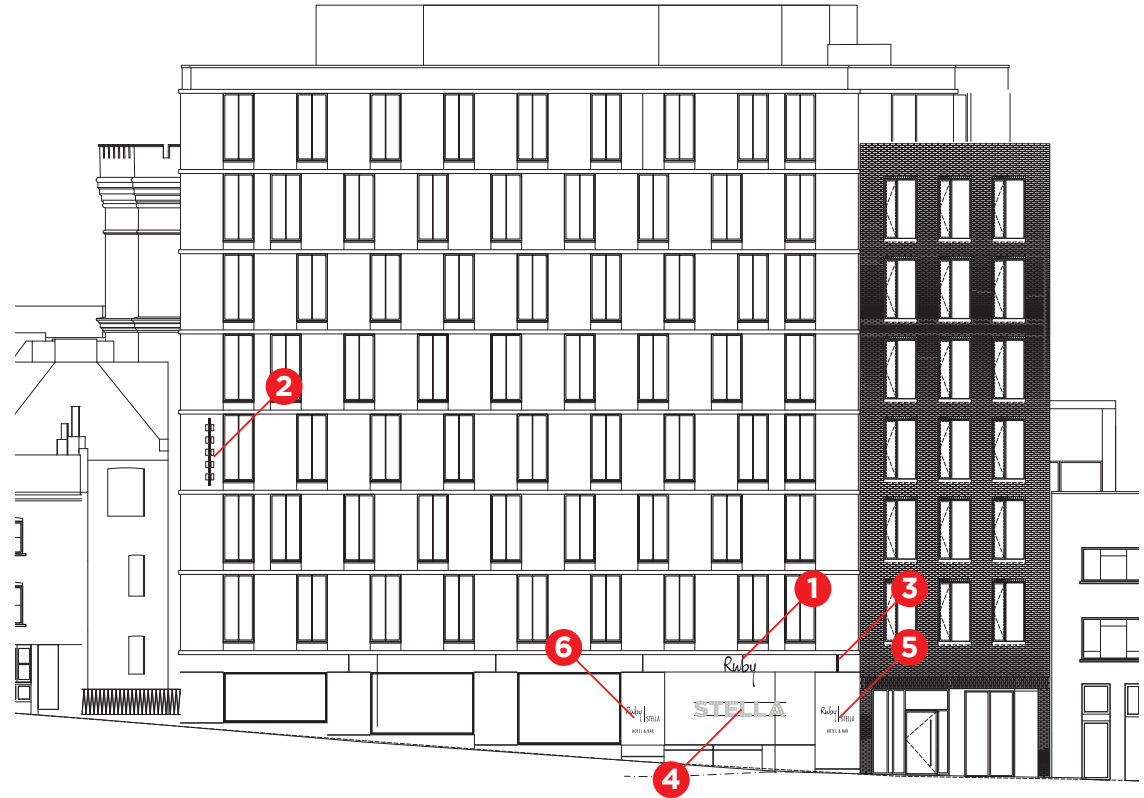


Please check the design carefully. Bespoke commission orders cannot be cancelled once production has started.
Finished products are non-returnable and non-exchangeable.

1.1 South Elevation
Scale 1:200



1.2 East Elevation
Scale 1:200



SCALE 1:200



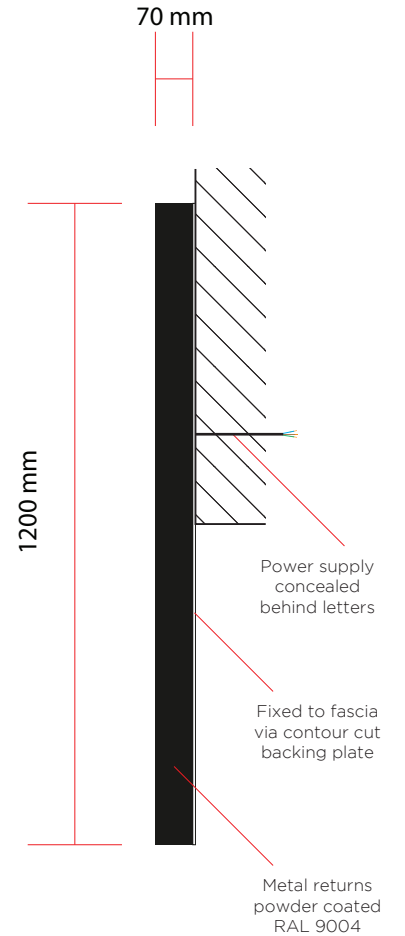
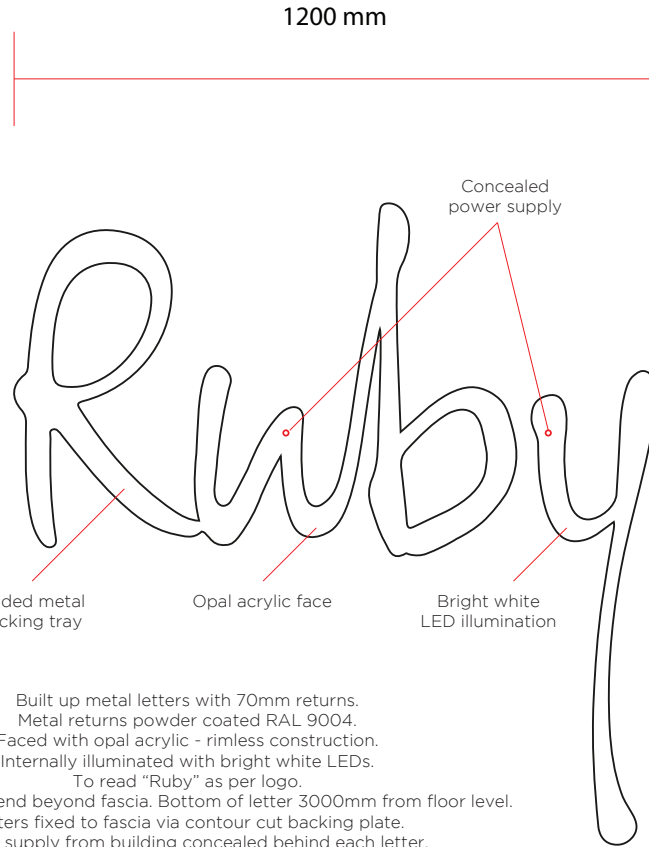
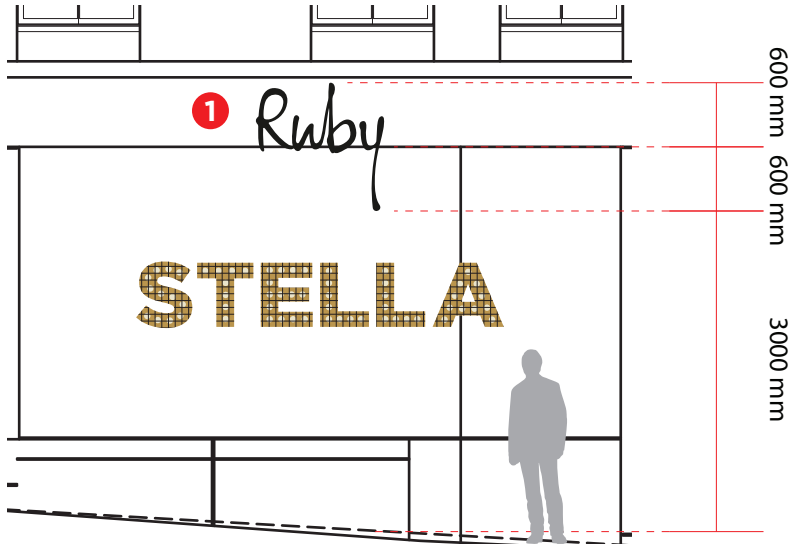
#GGRH01	Rev: 7/3	Page: 01	04/04/2023	SCALE AS SPECIFIED @ A3
External	Signage Positions			GOODWIN & GOODWIN 'SIGNS WITH SOUL'
Drawn by JL	Ruby Hospitality UK LTD			

Please check the design carefully. Bespoke commission orders cannot be cancelled once production has started.
 Finished products are non-returnable and non-exchangeable.

2.1 East Elevation
 Scale 1:50

2.2 Front
 Scale 1:10

2.3 Right
 Scale 1:10



Built up metal letters with 70mm returns.
 Metal returns powder coated RAL 9004.
 Faced with opal acrylic - rimless construction.
 Internally illuminated with bright white LEDs.
 To read "Ruby" as per logo.
 Letter "y" to extend beyond fascia. Bottom of letter 3000mm from floor level.
 Letters fixed to fascia via contour cut backing plate.
 Power supply from building concealed behind each letter.

Quantity x 1

Weight: 15kg max

Light output: 4000lm

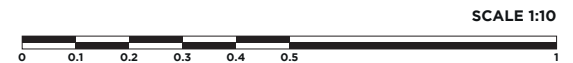


SCALE 1:50

Colour swatch



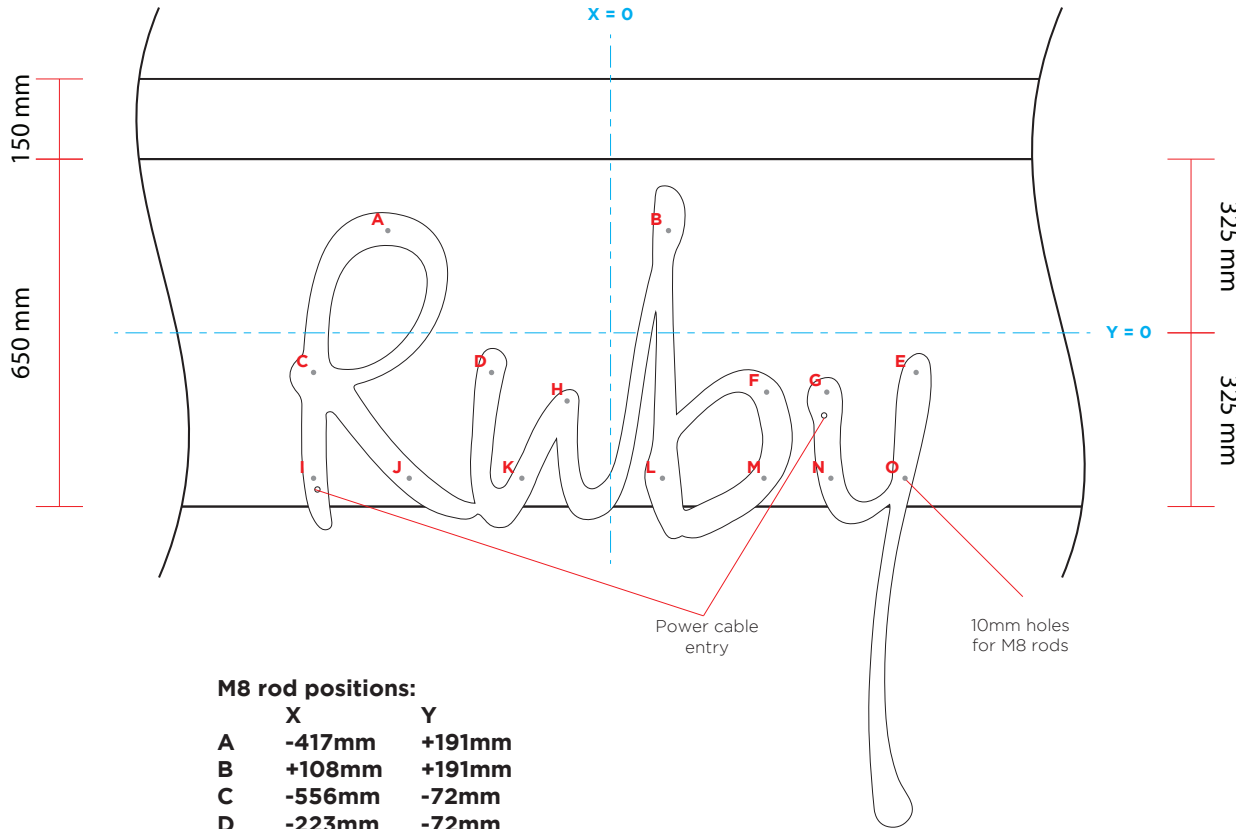
RAL 9004
 Signal Black



SCALE 1:10

#GGRH01	Rev: 7/3	Page: 02	04/04/2023	SCALE AS SPECIFIED @ A3
External	Position 1: Illuminated Letters			GOODWIN & GOODWIN 'SIGNS WITH SOUL'
Drawn by JL	Ruby Hospitality UK LTD			

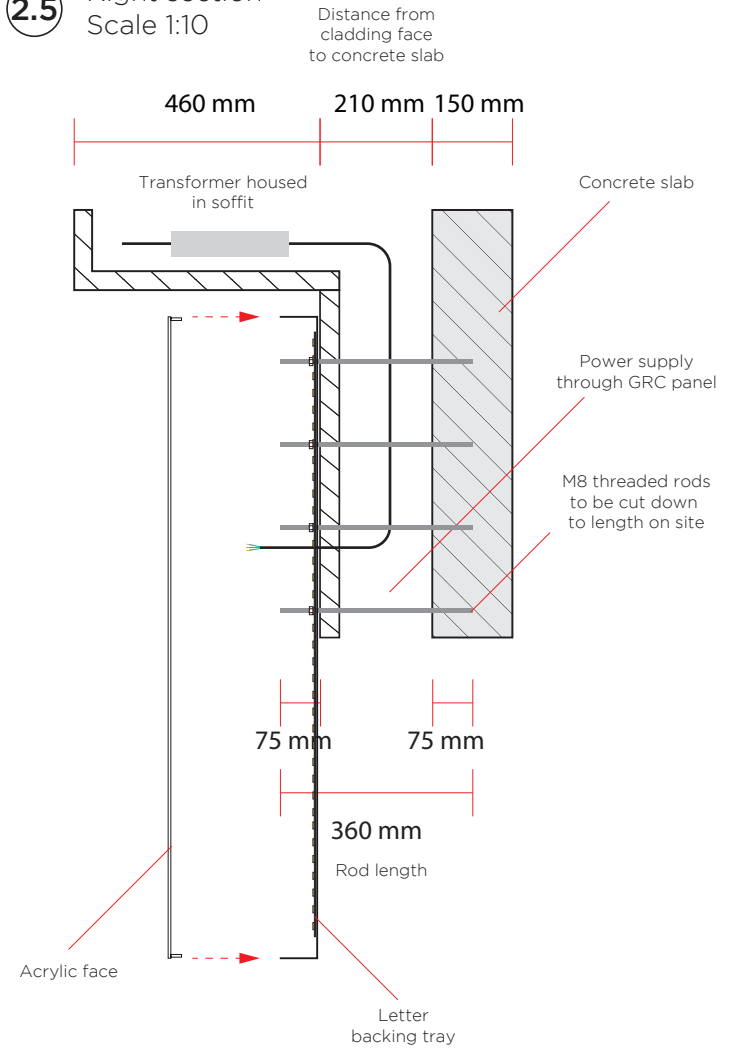
2.4 Fixing detail
 Scale 1:10



M8 rod positions:

	X	Y
A	-417mm	+191mm
B	+108mm	+191mm
C	-556mm	-72mm
D	-223mm	-72mm
E	+572mm	-72mm
F	+292mm	-111mm
G	+405mm	-111mm
H	-81mm	-128mm
I	-556mm	-272mm
J	-377mm	-272mm
K	-166mm	-272mm
L	+97mm	-272mm
M	+287mm	-272mm
N	+412mm	-272mm
O	+551mm	-272mm

2.5 Right section
 Scale 1:10



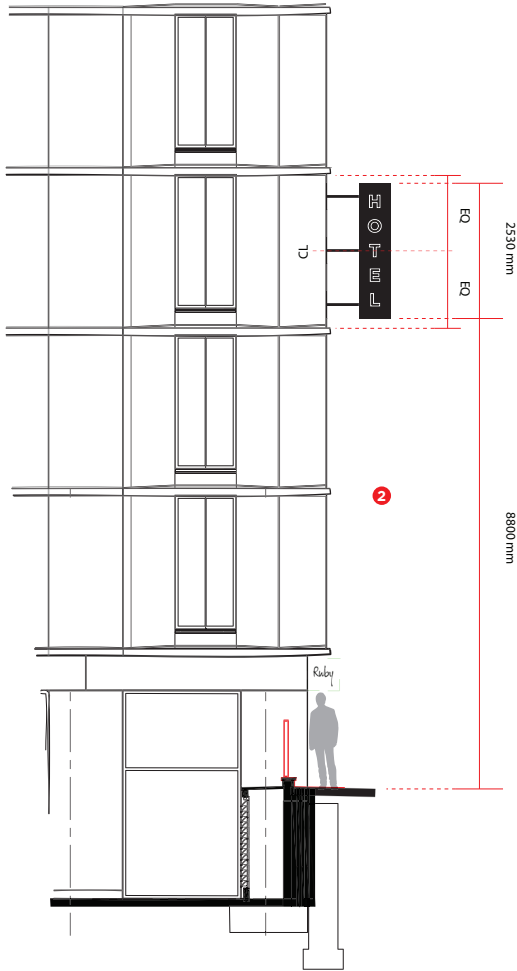
SCALE 1:10



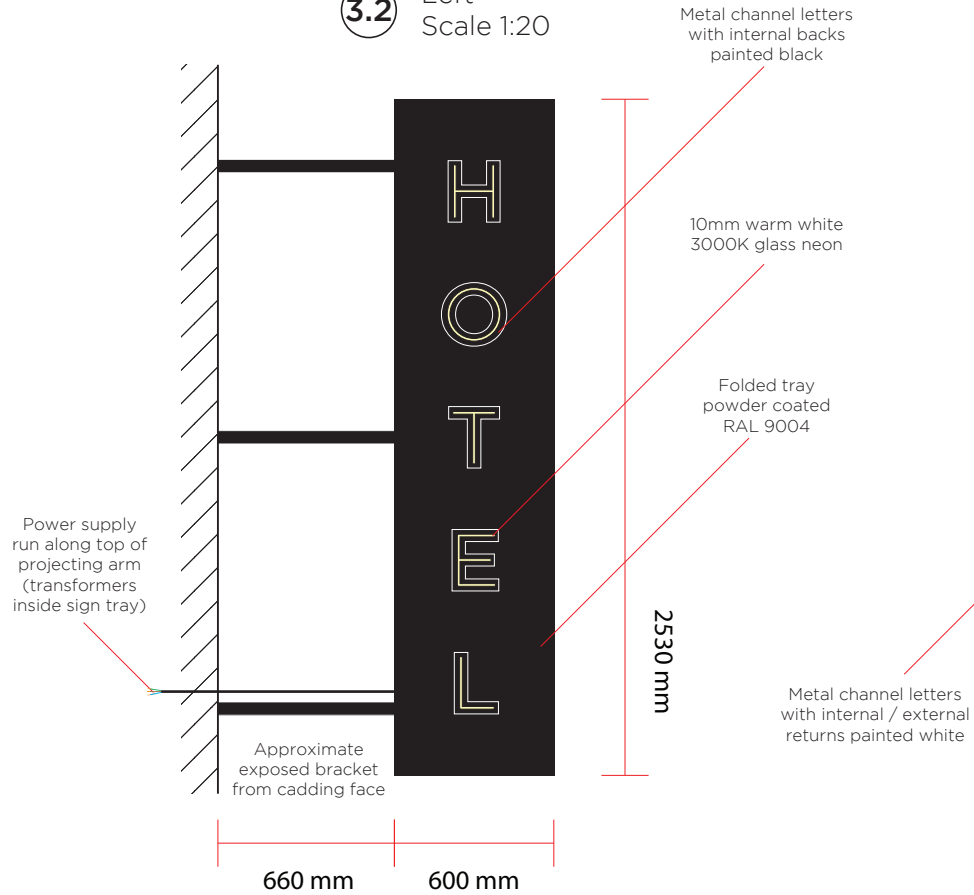
#GGRH01	Rev: 7/3	Page: 03	04/04/2023	SCALE AS SPECIFIED @ A3
External	Position 1: Illuminated Letters			GOODWIN & GOODWIN 'SIGNS WITH SOUL'
Drawn by JL	Ruby Hospitality UK LTD			

Please check the design carefully. Bespoke commission orders cannot be cancelled once production has started.
 Finished products are non-returnable and non-exchangeable.

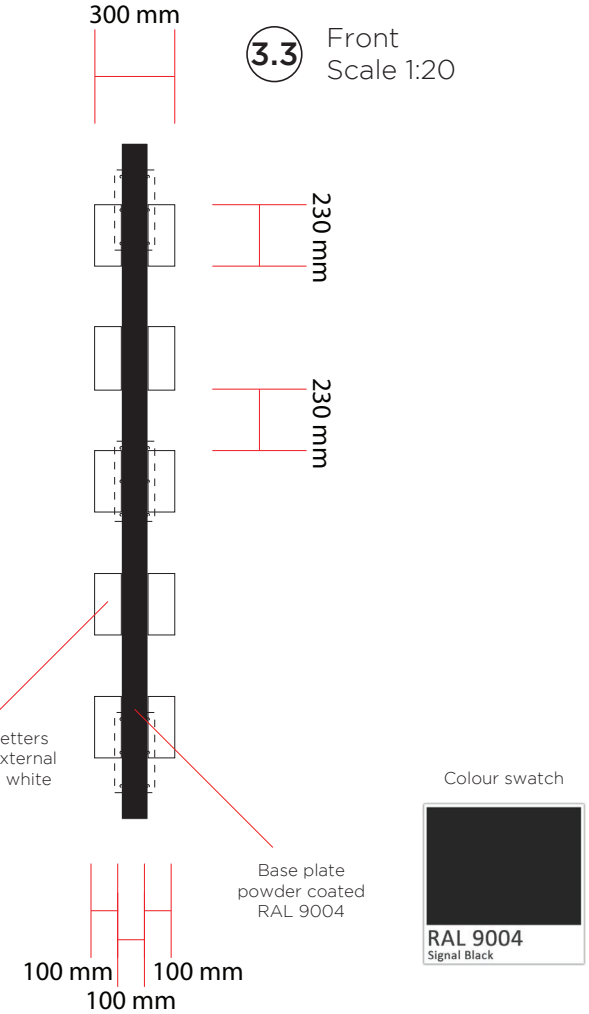
3.1 South Elevation
 Scale 1:50



3.2 Left
 Scale 1:20



3.3 Front
 Scale 1:20



Built up metal tray, double sided, with 100mm returns, powder coated RAL 9004.
 Faced to both sides with channel letters, powder coated white.
 Inlaid with 10mm glass neon, warm white (3000K). To read "HOTEL".
 Sign tray fixed to SFS with 50mm box steel and 10mm welded base plate.
 Bracket as a single piece, to be fixed prior to cladding installation. To project 1780mm (W).
 To create 600mm projection from side of building. Signage to sit central to wall area.
 To be fixed at 3rd floor. Bottom of sign to be 8800mm from ground level.
 Neon transformers, cabling and power supply concealed within tray.
 Double sided tray to fix over bracket using concealed angle fixings (see pg4).

Weight: 100kg max

Light output: 3360lm per side

SCALE 1:20

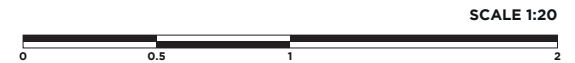
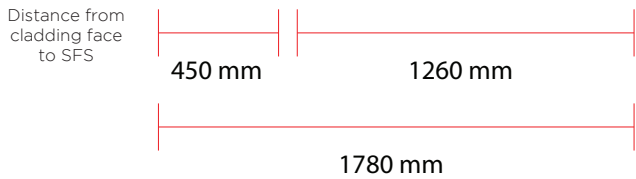
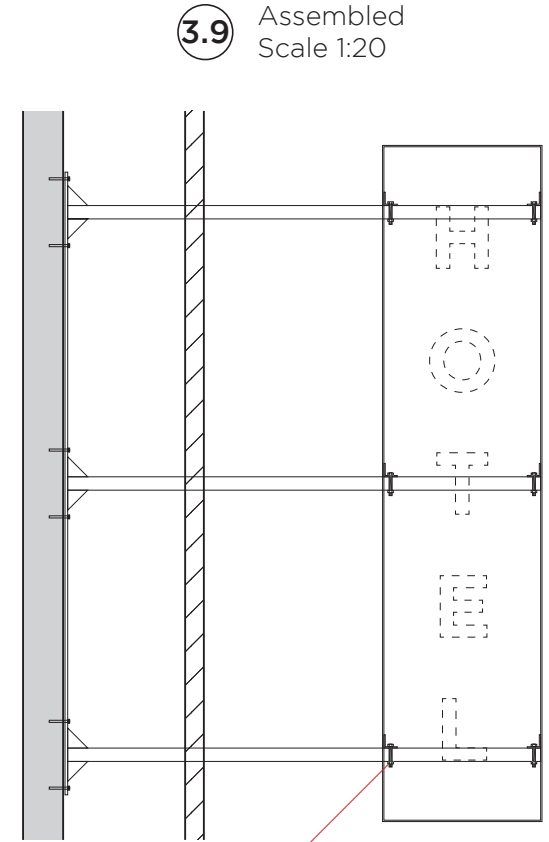
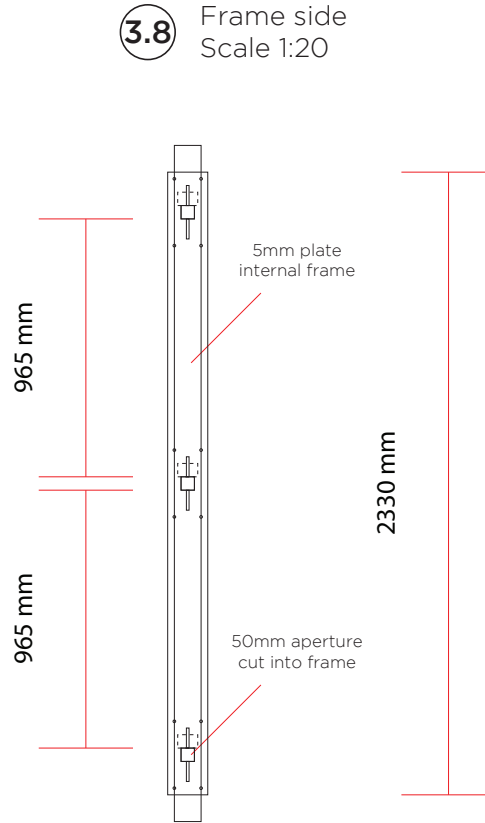
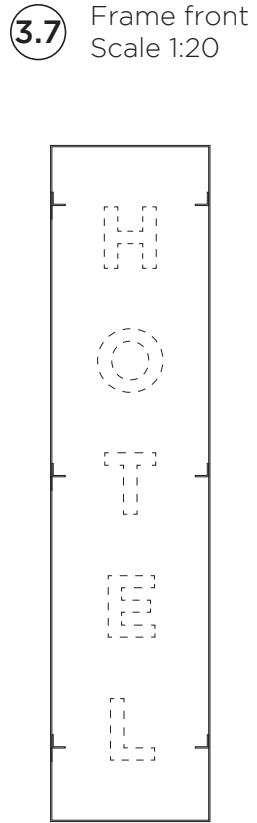
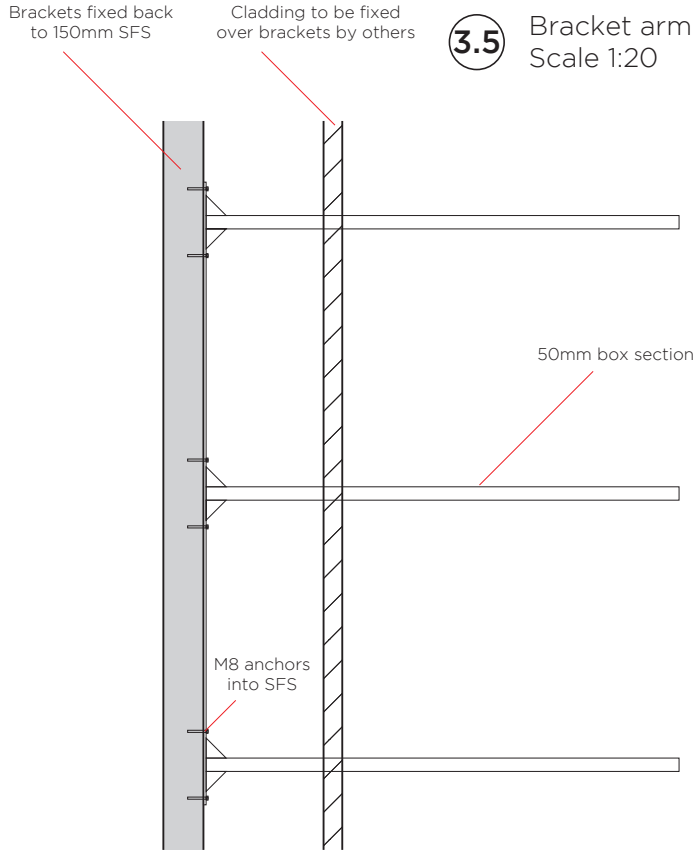


Quantity x 1



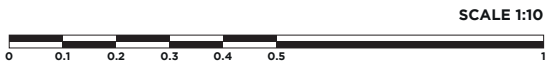
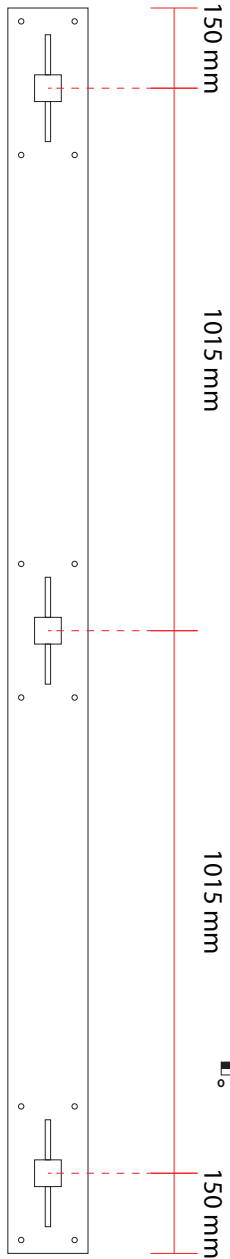
#GGRH01	Rev: 7/3	Page: 04	04/04/2023	SCALE AS SPECIFIED @ A3
External	Position 2: Projecting Neon Sign			GOODWIN & GOODWIN 'SIGNS WITH SOUL'
Drawn by JL	Ruby Hospitality UK LTD			

Please check the design carefully. Bespoke commission orders cannot be cancelled once production has started.
 Finished products are non-returnable and non-exchangeable.

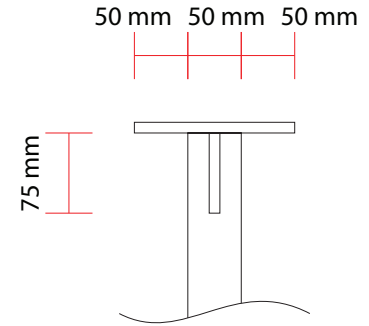


#GGRH01	Rev: 7/3	Page: 05	04/04/2023	SCALE AS SPECIFIED @ A3
External	Position 2: Projecting Neon Sign			GOODWIN & GOODWIN 'SIGNS WITH SOUL'
Drawn by JL	Ruby Hospitality UK LTD			

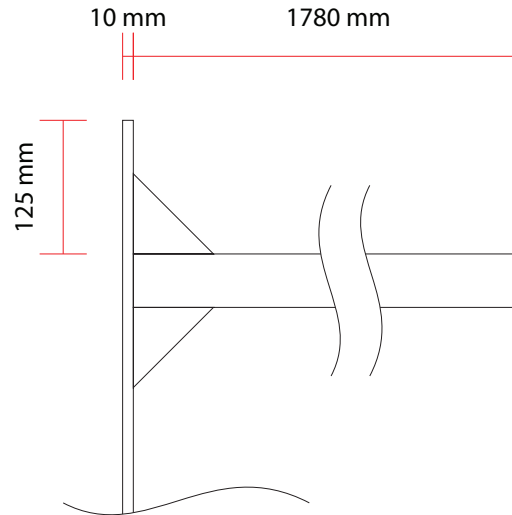
3.10 Bracket front
 Scale 1:10



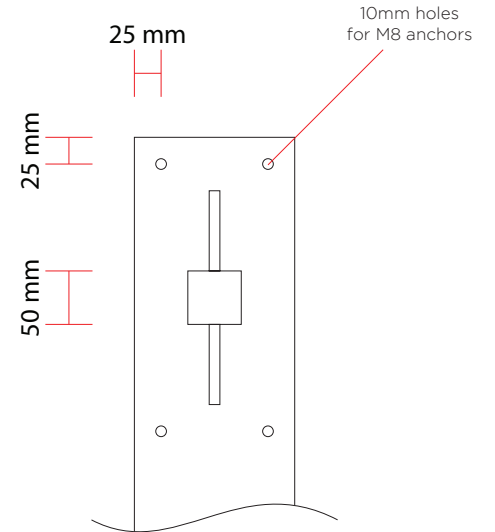
3.11 Bracket top
 Scale 1:5



3.12 Bracket left
 Scale 1:5

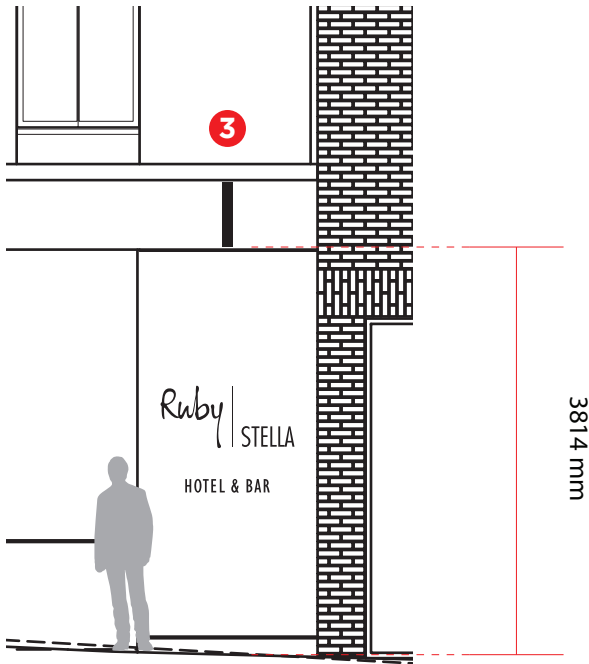


3.13 Bracket front
 Scale 1:5

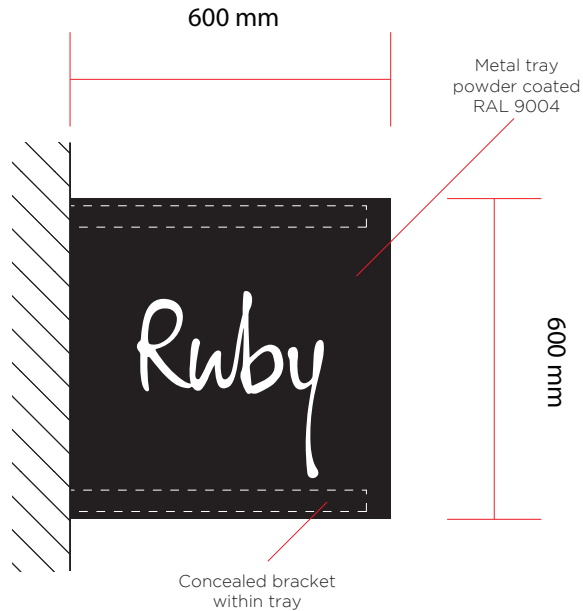


#GGRH01	Rev: 7/3	Page: 06	04/04/2023	SCALE AS SPECIFIED @ A3
External	Position 2: Projecting Neon Sign			GOODWIN & GOODWIN 'SIGNS WITH SOUL'
Drawn by JL	Ruby Hospitality UK LTD			

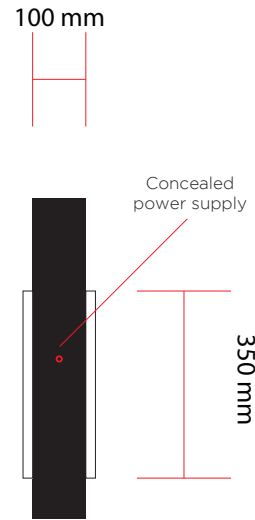
4.1 South Elevation
 Scale 1:50



4.2 Left
 Scale 1:10



4.3 Front
 Scale 1:10



4.4 Right
 Scale 1:10



Built up metal tray, double sided, with 100mm returns.
 Metal tray powder coated RAL 9004.
 Fret cut detail to both sides, with 18mm opal acrylic push-through letters.
 To read "RUBY" as per logo.
 Metal tray to be fixed flush to building fascia, central to wall area.
 Bottom of sign to be 3814mm from ground level.
 Cabling and power supply concealed within tray.
 Fixed to GRC cladding with internal brackets and concealed fixings.

Weight: 25kg max

Light output: 1300lm per side

Quantity x 1

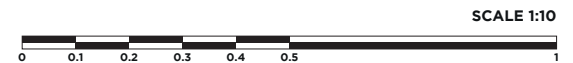


SCALE 1:50

Colour swatch



RAL 9004
 Signal Black

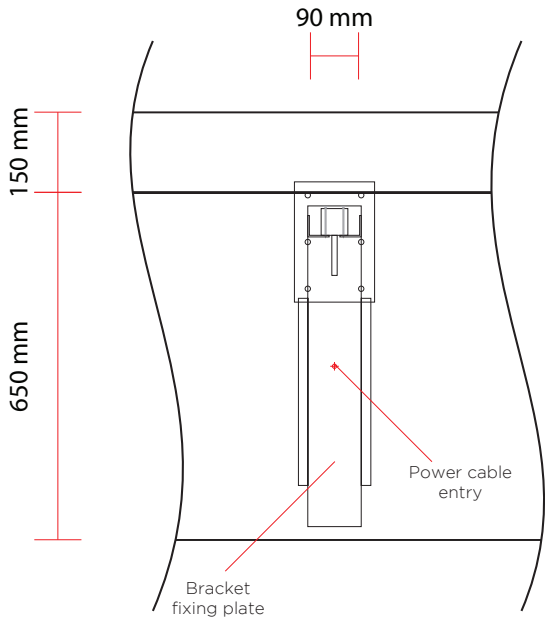


SCALE 1:10

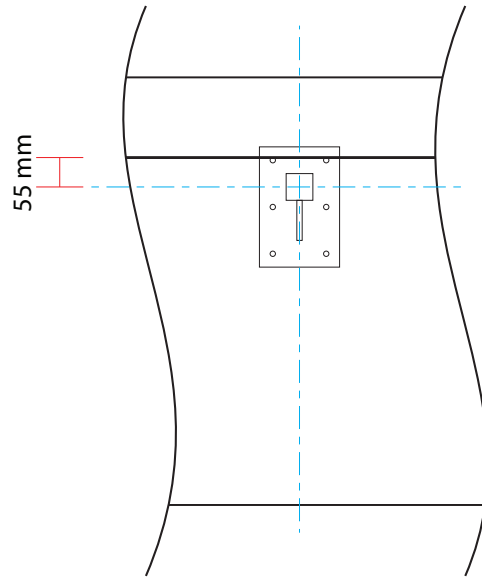
#GGRH01	Rev: 7/3	Page: 07	04/04/2023	SCALE AS SPECIFIED @ A3
External	Position 3: Projecting Blade Sign			GOODWIN & GOODWIN 'SIGNS WITH SOUL'
Drawn by JL	Ruby Hospitality UK LTD			

Please check the design carefully. Bespoke commission orders cannot be cancelled once production has started.
 Finished products are non-returnable and non-exchangeable.

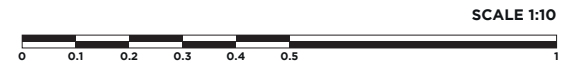
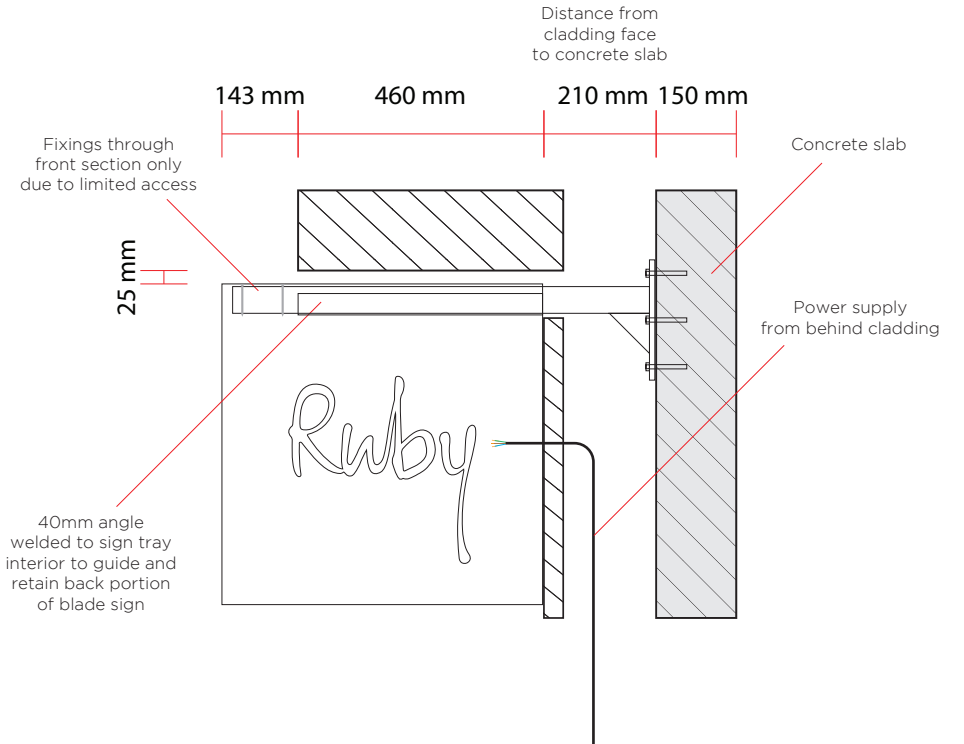
4.5 Front
 Scale 1:10



4.6 Bracket arm position
 Scale 1:10



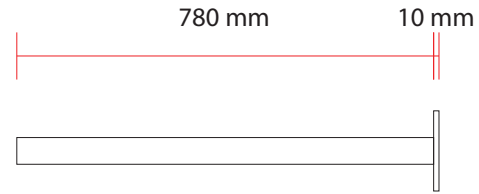
4.7 Assembled
 Scale 1:10



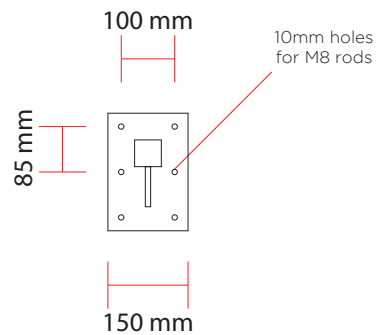
#GGRH01	Rev: 7/3	Page: 08	04/04/2023	SCALE AS SPECIFIED @ A3
External	Position 3: Projecting Blade Sign			GOODWIN & GOODWIN 'SIGNS WITH SOUL'
Drawn by JL	Ruby Hospitality UK LTD			

Please check the design carefully. Bespoke commission orders cannot be cancelled once production has started.
 Finished products are non-returnable and non-exchangeable.

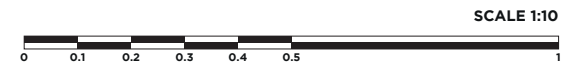
4.8 Bracket top
 Scale 1:10



4.9 Bracket front
 Scale 1:10



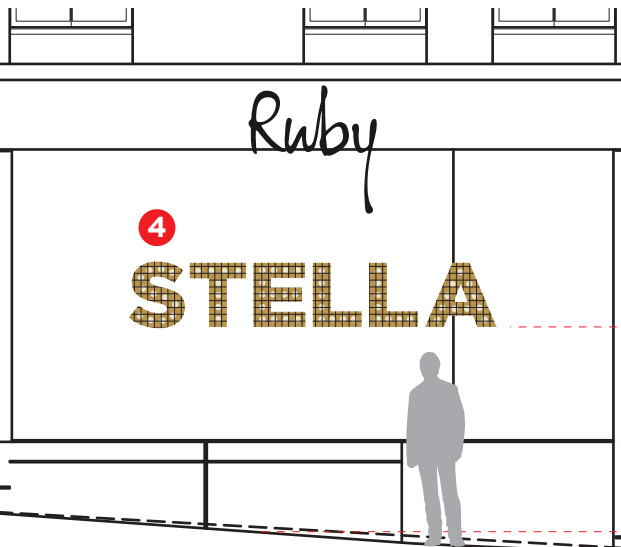
4.10 Bracket right
 Scale 1:10



#GGRH01	Rev: 7/3	Page: 09	04/04/2023	SCALE AS SPECIFIED @ A3
External	Position 3: Projecting Blade Sign			GOODWIN & GOODWIN 'SIGNS WITH SOUL'
Drawn by JL	Ruby Hospitality UK LTD			

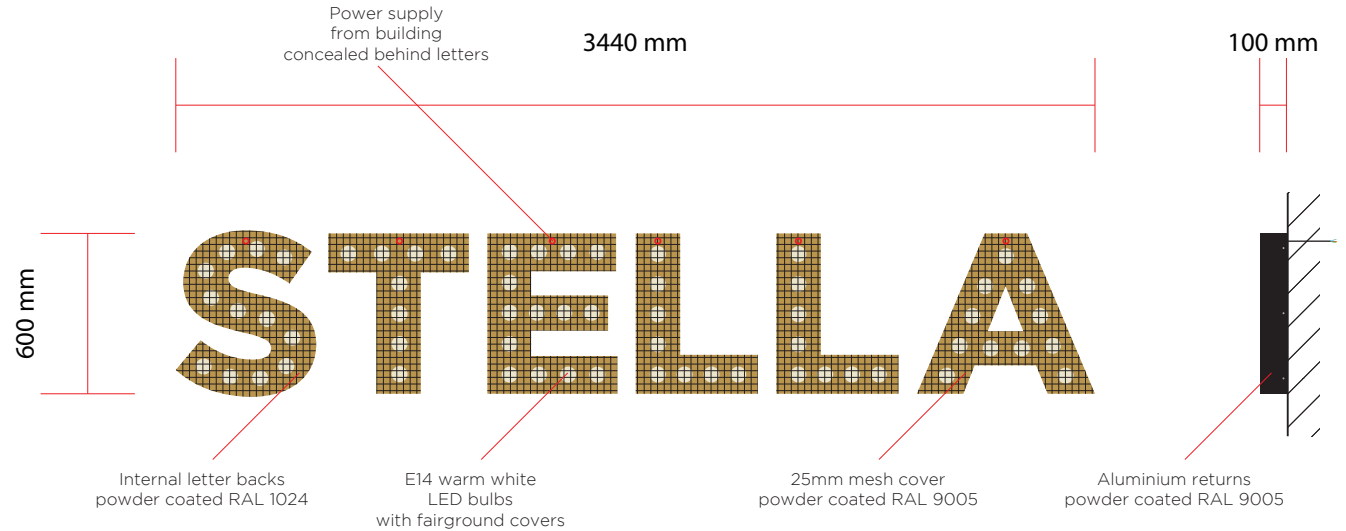
Please check the design carefully. Bespoke commission orders cannot be cancelled once production has started.
 Finished products are non-returnable and non-exchangeable.

5.1 South Elevation
 Scale 1:50



5.2 Front
 Scale 1:20

5.3 Right
 Scale 1:20



Built up aluminium channel letters, with 100mm returns.
 Letters faced with 25mm mesh covers to hinder pedestrian bulb access.
 External returns and mesh powder coated RAL 9005 (black).
 Internal metal backs powder coated RAL 1024 (Ochre Yellow).
 Inlaid with warm white E14 LED bulbs.
 To read "STELLA" in standard bulb letter font.
 Letters fixed to SFS beam behind cladding using contour cut fixing plate and threaded rods.
 Plates and rods will be installed prior to cladding, with letter backs nitted onto rods after.
 Bottom of sign to be 1920mm from ground level.
 Power supply to each individual letter from rear-top, concealed behind.

Weight: 36kg max
Light output: 6100lm max

Quantity x 1

SCALE 1:50



Colour swatch



SCALE 1:20

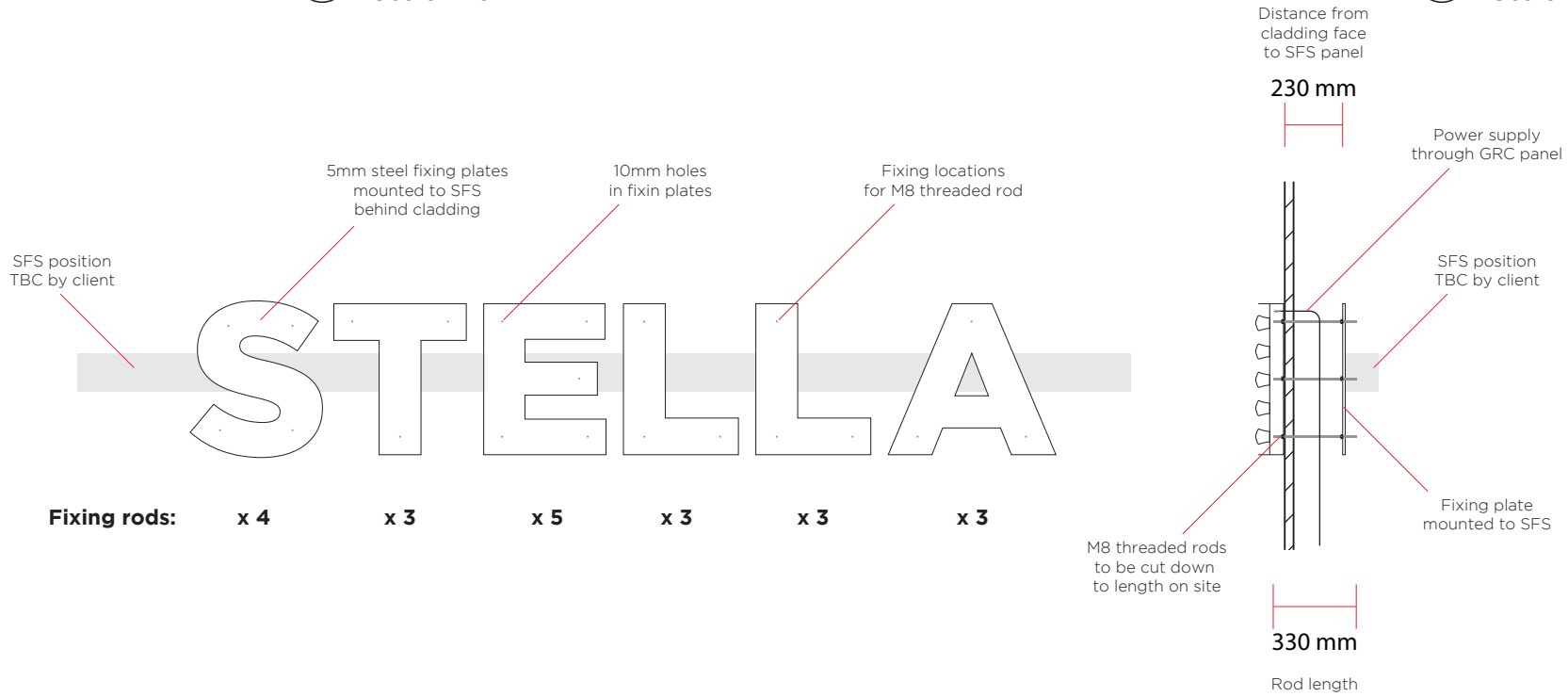


#GGRH01	Rev: 7/3	Page: 10	04/04/2023	SCALE AS SPECIFIED @ A3
External	Position 4: Bulb Letters			GOODWIN & GOODWIN 'SIGNS WITH SOUL'
Drawn by JL	Ruby Hospitality UK LTD			

Please check the design carefully. Bespoke commission orders cannot be cancelled once production has started.
 Finished products are non-returnable and non-exchangeable.

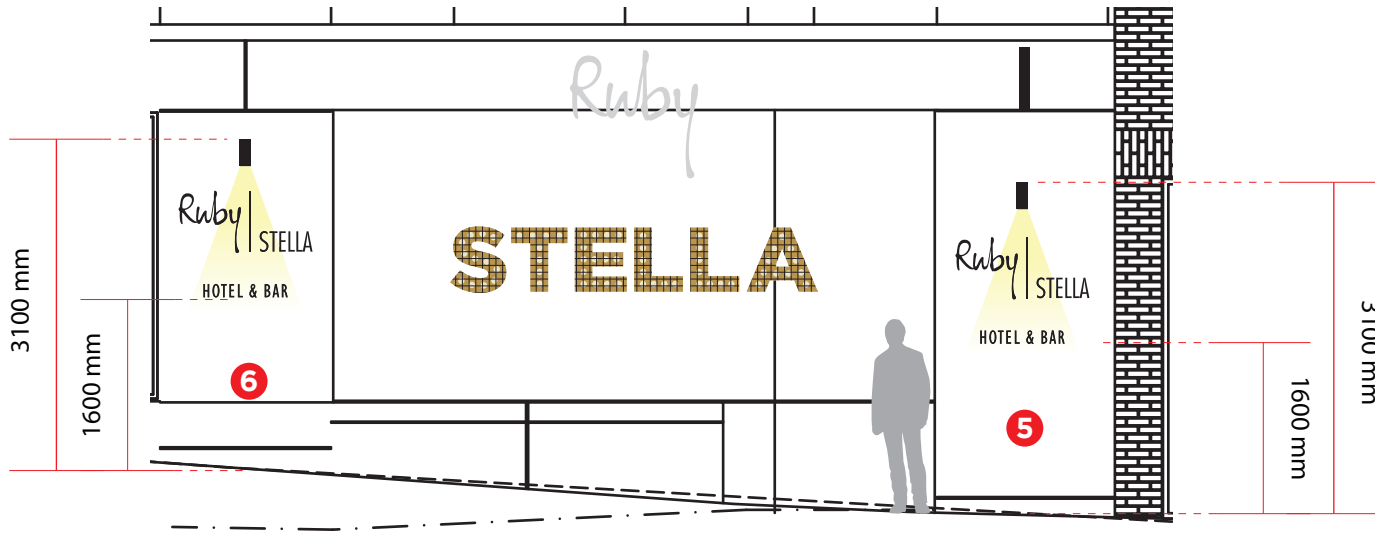
5.4 Fixing detail
 Scale 1:20

5.5 Right
 Scale 1:20



#GGRH01	Rev: 7/3	Page: 11	04/04/2023	SCALE AS SPECIFIED @ A3
External	Position 4: Bulb Letters			GOODWIN & GOODWIN 'SIGNS WITH SOUL'
Drawn by JL	Ruby Hospitality UK LTD			

6.1 South Elevation
 Scale 1:50



SCALE 1:50

Flat cut 5mm mild steel letters, blackened finish.
 Fitted to wall with rods and adhesive.
 With 20mm standoff from building.
 Illuminated with Artemide Obice wall 34° 605lm, 3000K LED, tilting angle +35°/-125°
 Matt black finish, with wall bracket.
 Power supply from building directly behind fixture.

Quantity x 2

**'STELLA' logo for illustration only.
 Final vector logo required before production**

Weight: 5kg max

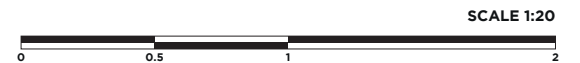
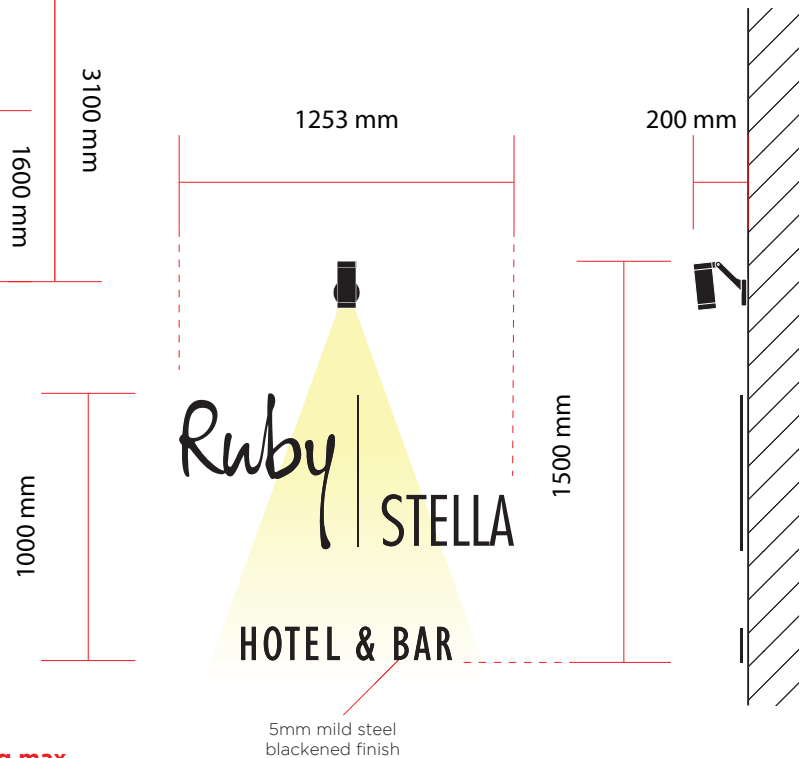
Light output: 605lm

Colour swatch



6.2 Front
 Scale 1:20

6.3 Right
 Scale 1:20



SCALE 1:20

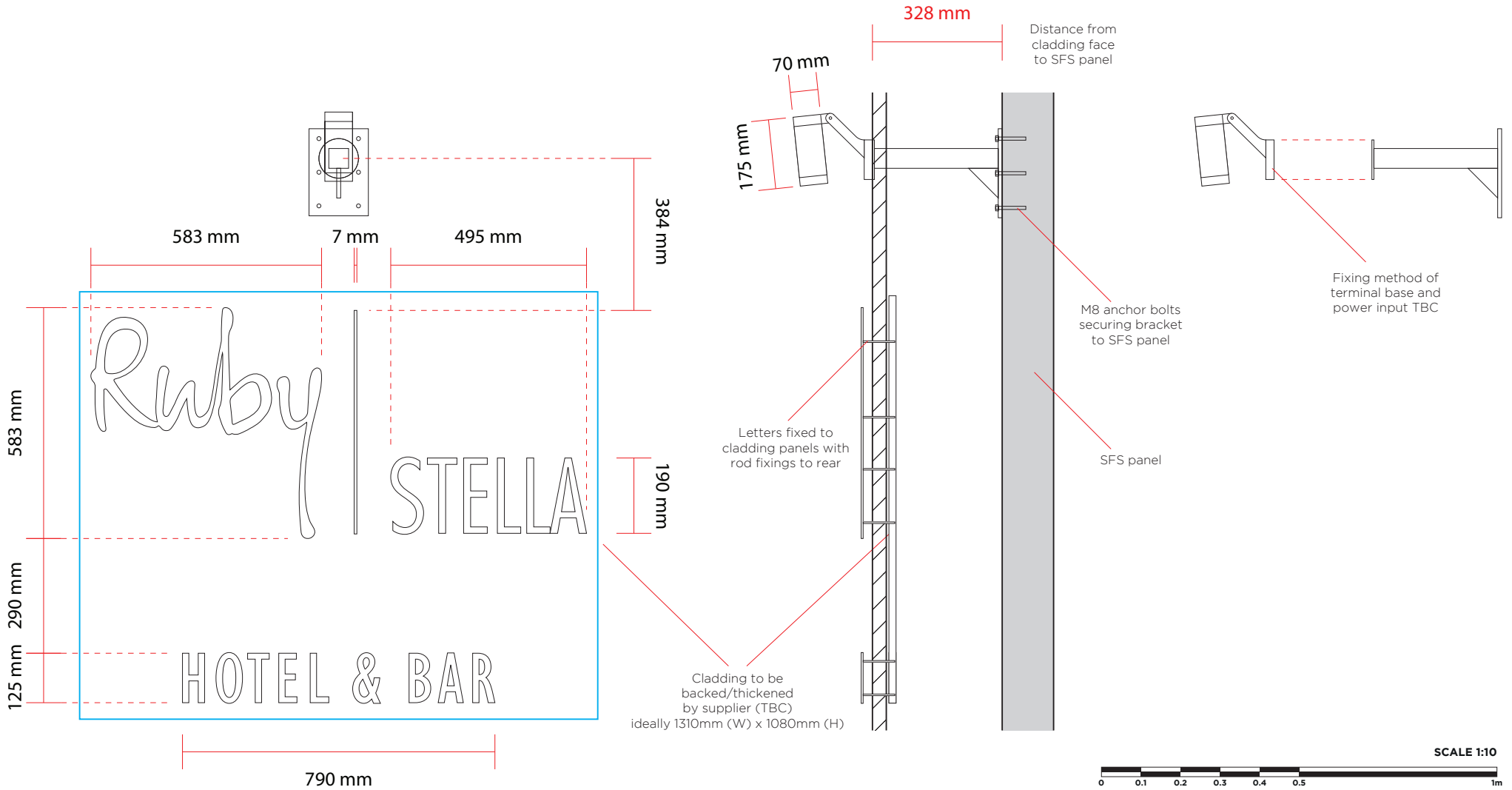
#GGRH01	Rev: 7/3	Page: 12	04/04/2023	SCALE AS SPECIFIED @ A3
External	Position 5 & 6: Silhouette Lettering			GOODWIN & GOODWIN 'SIGNS WITH SOUL'
Drawn by JL	Ruby Hospitality UK LTD			

Please check the design carefully. Bespoke commission orders cannot be cancelled once production has started.
 Finished products are non-returnable and non-exchangeable.

6.4 Front
 Scale 1:10

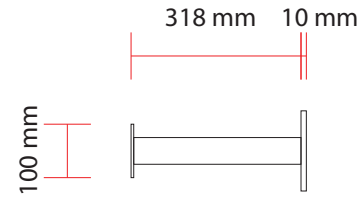
6.5 Right
 Scale 1:10

6.6 Terminal base
 Scale 1:10

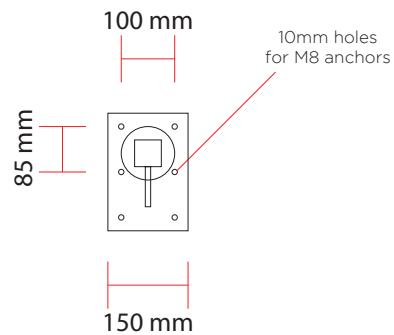


#GGRH01	Rev: 7/3	Page: 13	04/04/2023	SCALE AS SPECIFIED @ A3
External	Position 5 & 6: Silhouette Lettering			GOODWIN & GOODWIN 'SIGNS WITH SOUL'
Drawn by JL	Ruby Hospitality UK LTD			

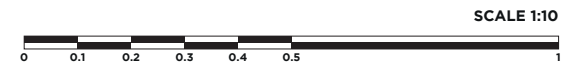
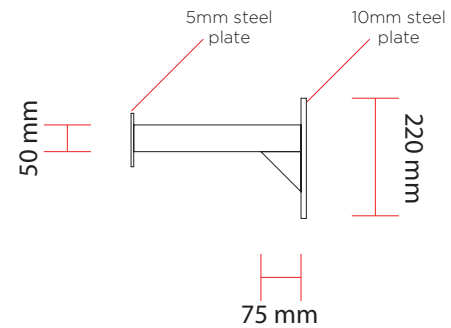
6.7 Bracket top
 Scale 1:10



6.8 Bracket front
 Scale 1:10



6.9 Bracket right
 Scale 1:10



#GGRH01	Rev: 7/3	Page: 14	04/04/2023	SCALE AS SPECIFIED @ A3
External	Position 3: Projecting Blade Sign			GOODWIN & GOODWIN 'SIGNS WITH SOUL'
Drawn by JL	Ruby Hospitality UK LTD			