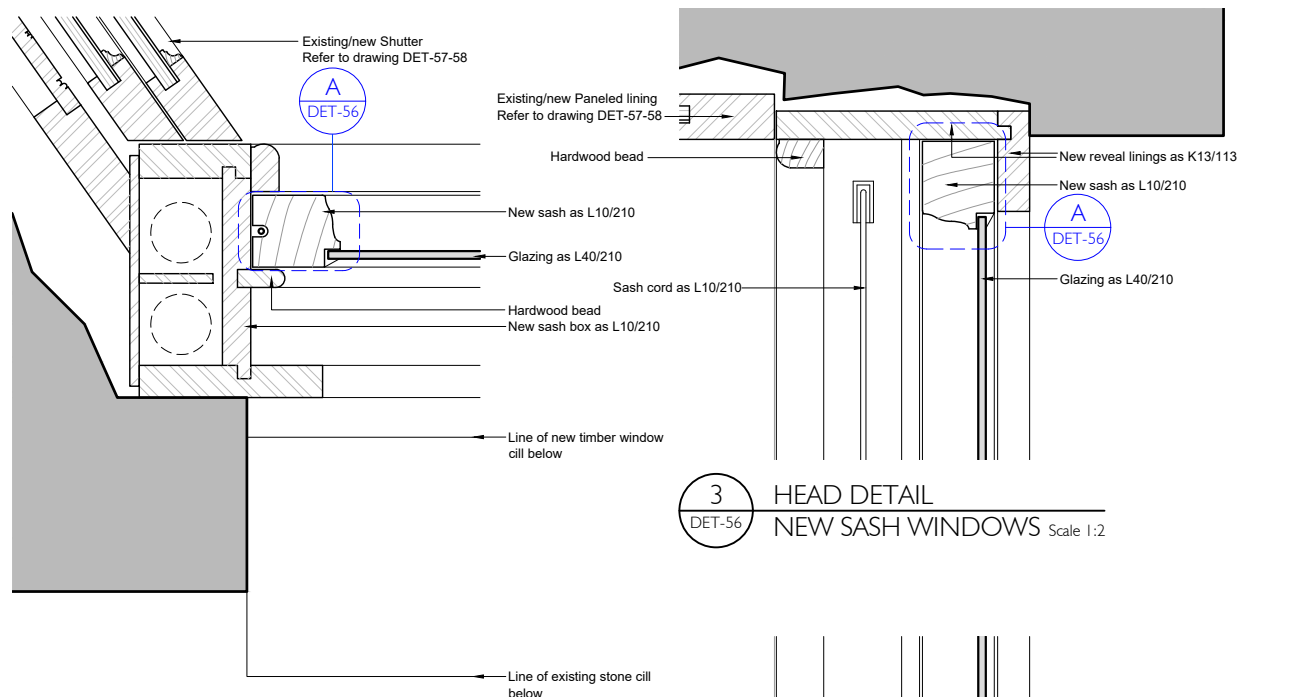
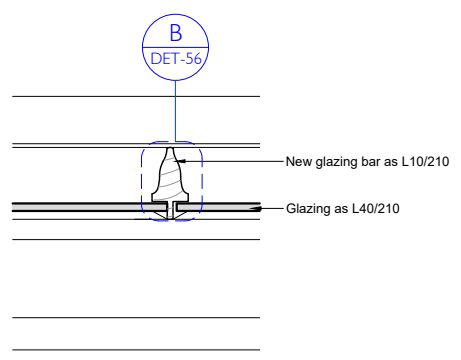


DO NOT SCALE DRAWINGS. THE CONTRACTOR IS RESPONSIBLE FOR CHECKING DIMENSIONS & ANY DISCREPANCY IS TO BE REFERRED TO THE ARCHITECT.

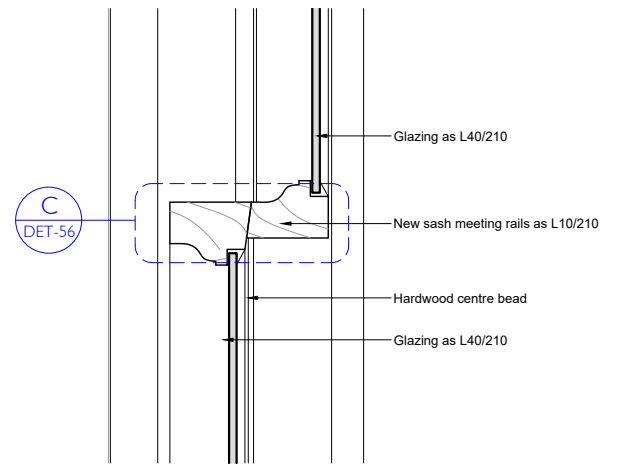


3 HEAD DETAIL
NEW SASH WINDOWS Scale 1:2

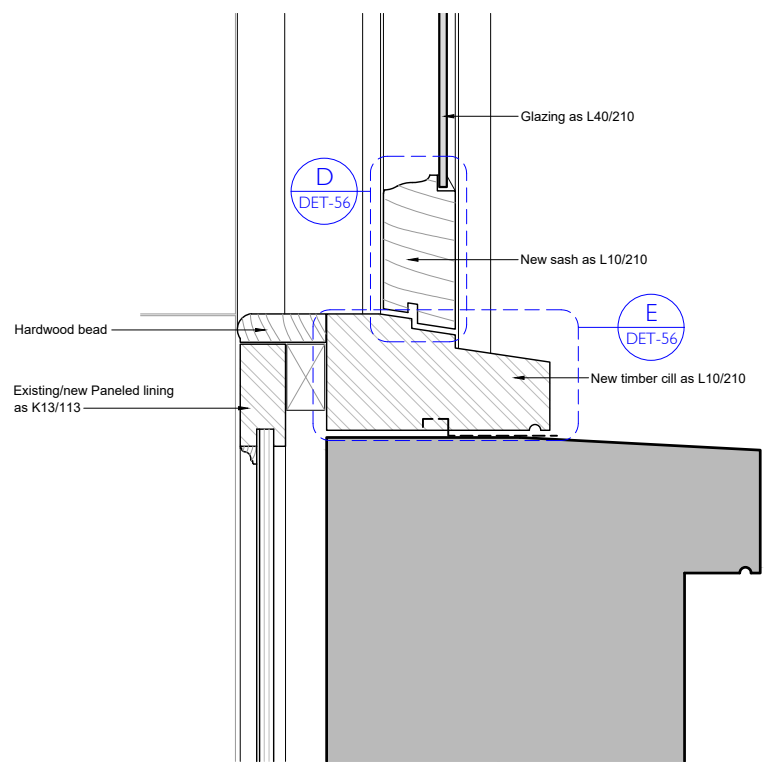
1 JAMB
NEW SASH WINDOWS Scale 1:2



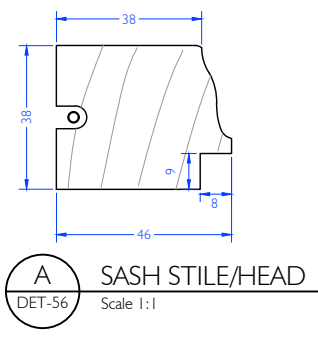
2 GLAZING BAR
NEW SASH WINDOWS Scale 1:2



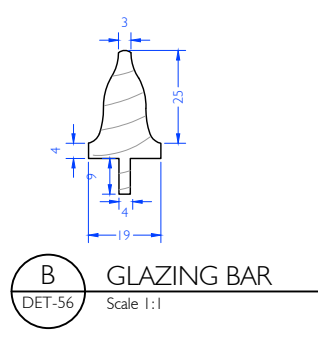
4 MEETING RAIL
NEW SASH WINDOWS Scale 1:2



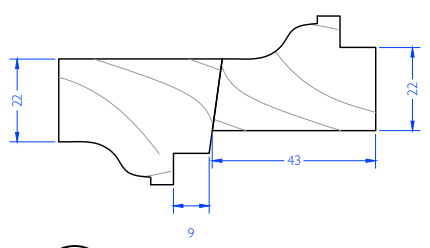
5 WINDOW CILL
NEW SASH WINDOWS Scale 1:2



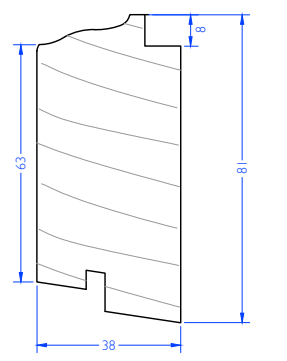
A SASH STILE/HEAD
Scale 1:1



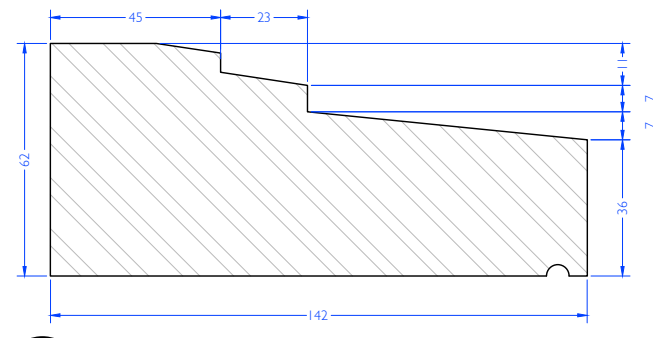
B GLAZING BAR
Scale 1:1



C MEETING RAILS
Scale 1:1

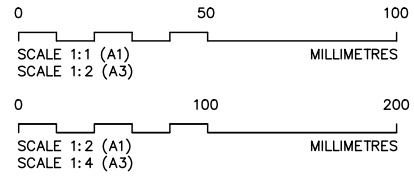


D BOTTOM RAIL
Scale 1:1



E CILL
Scale 1:1

ALL NEW & EXISTING WINDOWS TO BE FITTED WITH VENTROLLA DRAUGHT PROOFING SYSTEM



| | | |
|------|-----------|--------|
| T | Tender | Aug 22 |
| REV. | AMENDMENT | DATE |

THOMAS FORD & PARTNERS
CHARTERED ARCHITECTS SURVEYORS

177 KIRKDALE
SYDENHAM • LONDON • SE26 4QH
TEL 020 8659 3250 • FAX 020 8659 3146
EMAIL tf@thomasford.co.uk

| | | | |
|--|----------|----------|---------|
| PROJECT | | | |
| 41 DOUGHTY STREET RENOVATION CAMDEN | | | |
| TITLE | | | |
| NEW SASH WINDOWS DETAILS AS PROPOSED | | | |
| DRAWN | DATE | SCALE | CHECKED |
| Sed | Apr 22 | 1:1/2@A1 | |
| PROJECT REF. | DRG. No. | REV | |
| 381401 | DET-56 | T | |