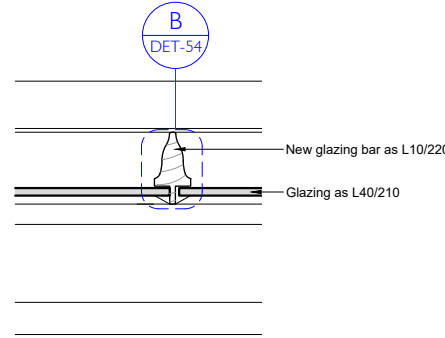
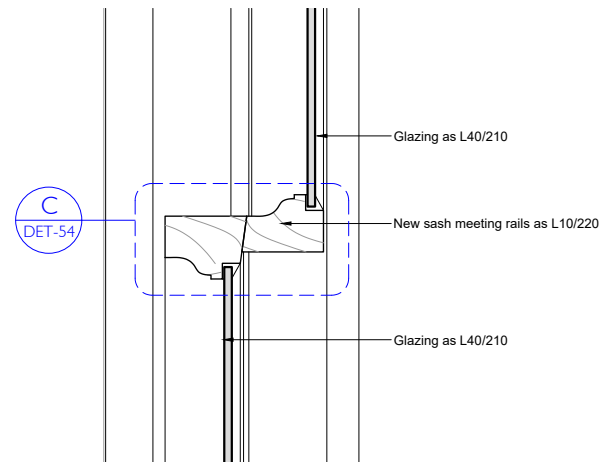


3 HEAD DETAIL
REPLACEMENT SASH Scale 1:2

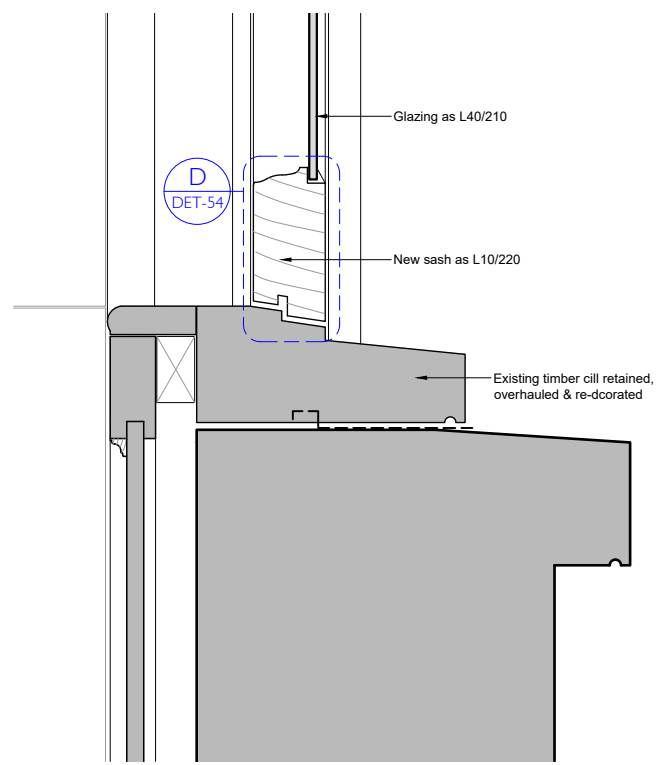
1 JAMB
REPLACEMENT SASH Scale 1:2



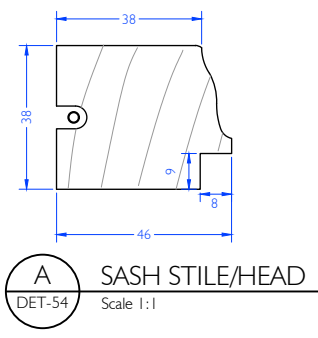
2 GLAZING BAR
REPLACEMENT SASH Scale 1:2



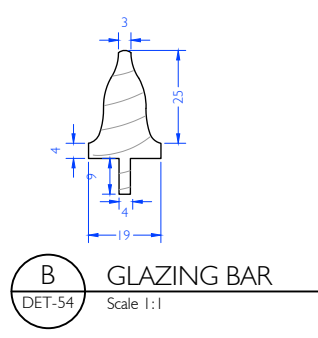
4 MEETING RAIL
REPLACEMENT SASH Scale 1:2



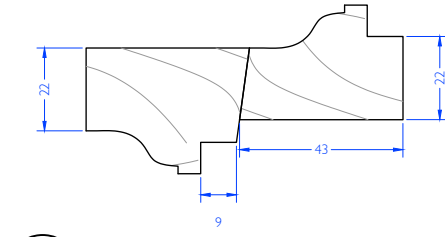
5 WINDOW CILL
REPLACEMENT SASH Scale 1:2



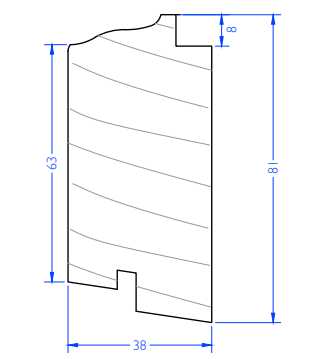
A SASH STILE/HEAD
Scale 1:1



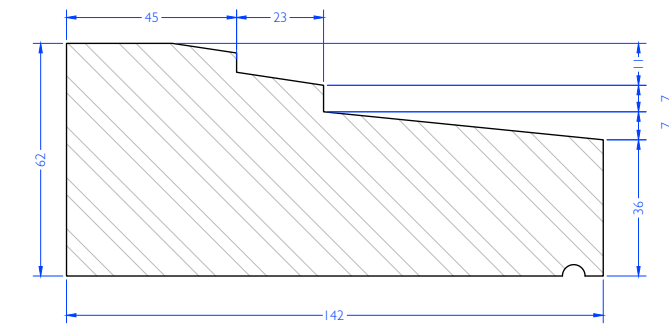
B GLAZING BAR
Scale 1:1



C MEETING RAILS
Scale 1:1



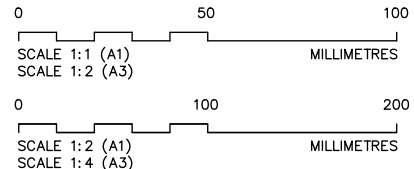
D BOTTOM RAIL
Scale 1:1



E CILL
Scale 1:1

ALL EXISTING JOINERY TO BE FULLY
STRIPPED & REPAIRED PRIOR TO
REDECORATION

ALL NEW & EXISTING WINDOWS TO
BE FITTED WITH VENTROLLA
DRAUGHT PROOFING SYSTEM



DO NOT SCALE DRAWINGS. THE CONTRACTOR IS RESPONSIBLE FOR CHECKING DIMENSIONS & ANY DISCREPANCY IS TO BE REFERRED TO THE ARCHITECT.		
T	Tender	Aug 22
REV.	AMENDMENT	DATE

THOMAS FORD & PARTNERS
CHARTERED ARCHITECTS SURVEYORS

177 KIRKDALE
SYDENHAM • LONDON • SE26 4QH
TEL 020 8659 3250 • FAX 020 8659 3146
EMAIL tfp@thomasford.co.uk

PROJECT
41 DOUGHTY STREET
RENOVATION
CAMDEN

TITLE
NEW RELACEMENT SASHES
DETAILS
AS PROPOSED

DRAWN	DATE	SCALES	CHECKED
Sed	Apr 22	1:1/2@A1	
PROJECT REF.	DRG. No.	REV.	
381401	DET-54	T	