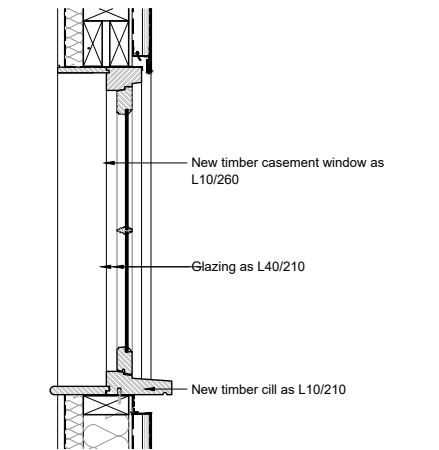
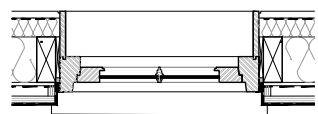


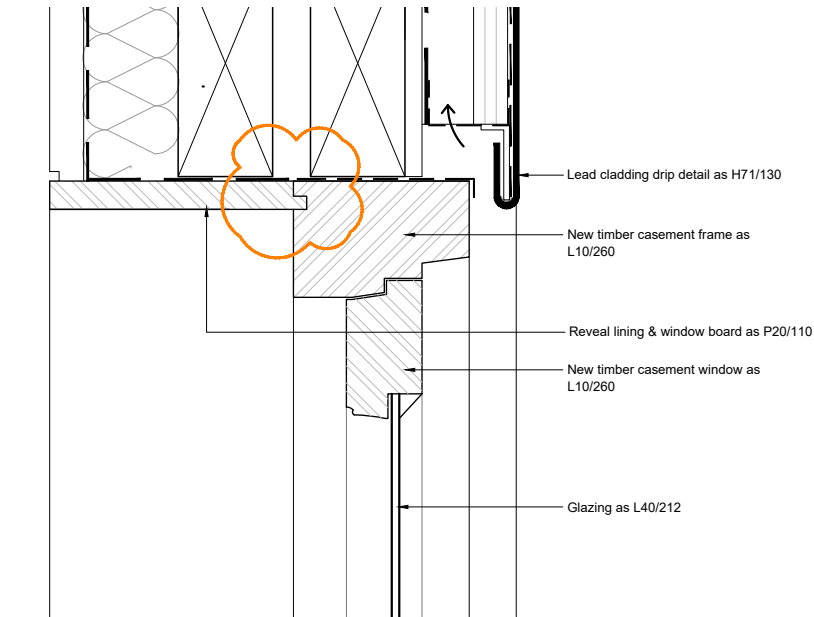
B NEW CASEMENT WINDOW
DET-52 ELEVATION



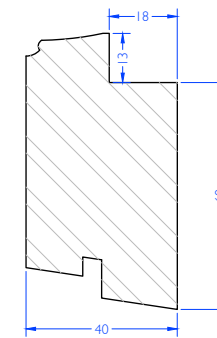
C NEW CASEMENT WINDOW
DET-52 ELEVATION



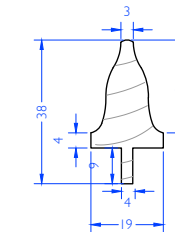
A NEW CASEMENT WINDOW
DET-52 PLAN



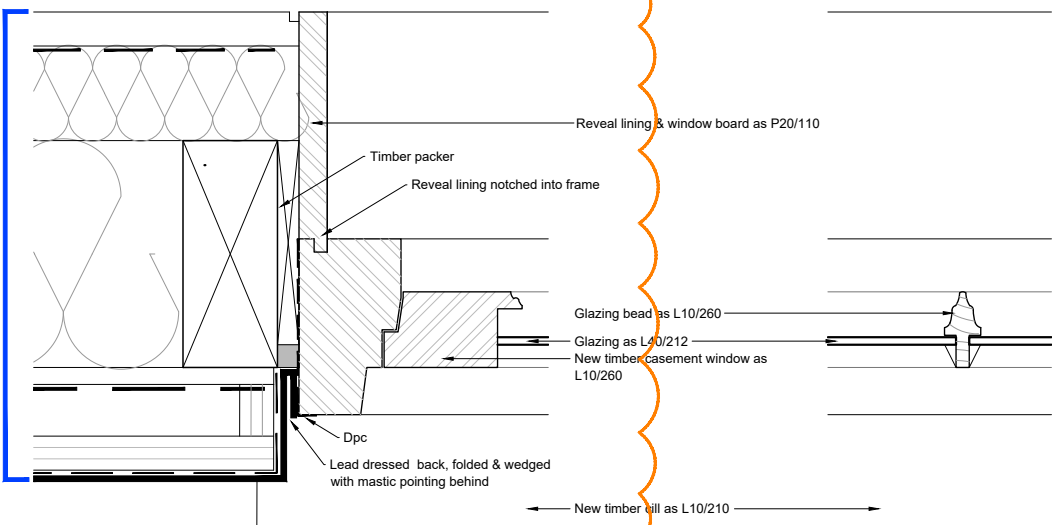
3 HEAD
DET-52 CASEMENT WINDOW Scale 1:2



5 STILE
DET-52 Scale 1:1

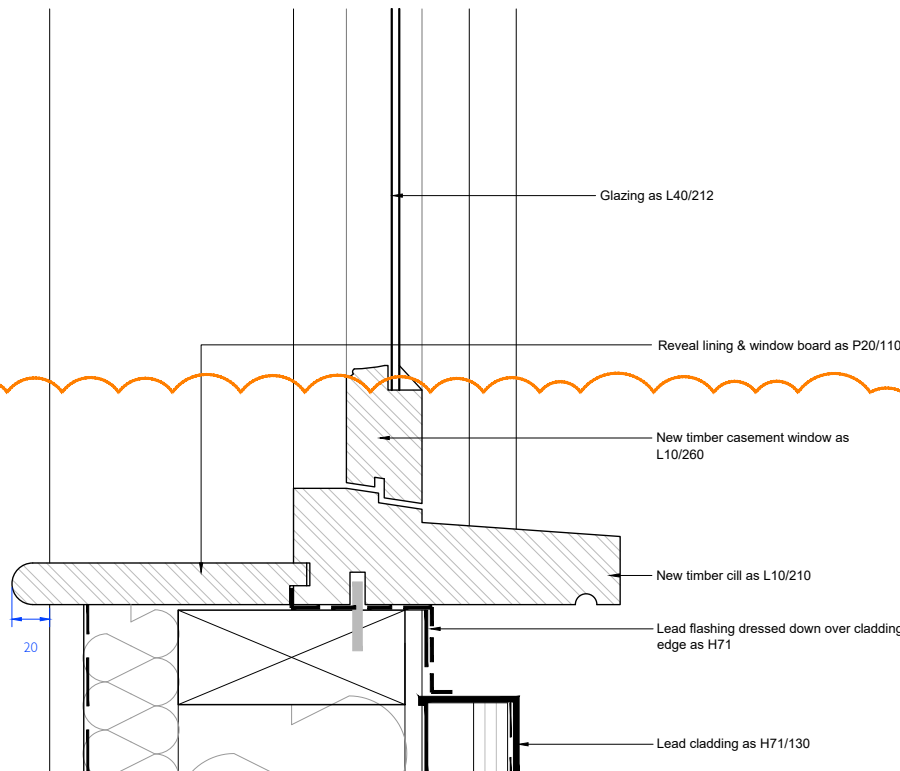


6 GLAZING BAR
DET-52 Scale 1:1



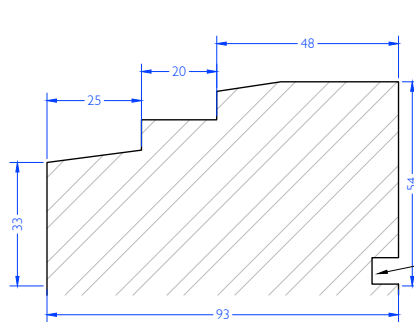
1 JAMB
DET-52 CASEMENT WINDOW Scale 1:2

2 GLAZING BAR
DET-52 CASEMENT WINDOW Scale 1:2

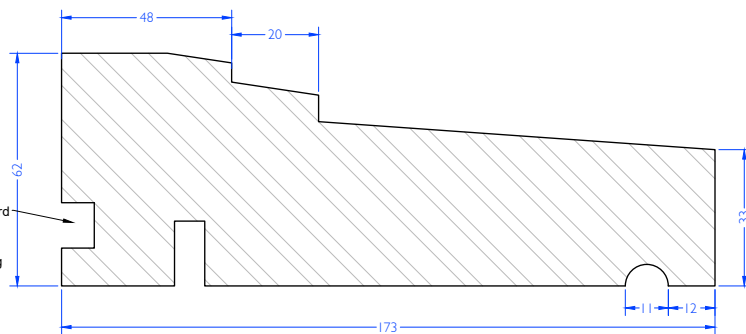


4 CILL
DET-52 CASEMENT WINDOW Scale 1:2

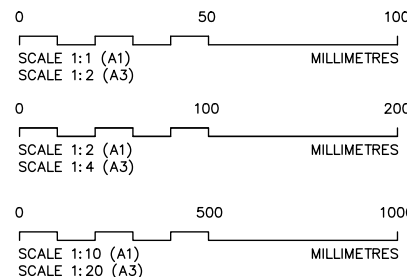
ALL NEW & EXISTING WINDOWS TO
BE FITTED WITH VENTROLLA
DRAUGHT PROOFING SYSTEM



7 FRAME
DET-52 Scale 1:1



8 FRAME
DET-52 Scale 1:1



DO NOT SCALE DRAWINGS. THE CONTRACTOR
IS RESPONSIBLE FOR CHECKING DIMENSIONS &
ANY DISCREPANCY IS TO BE REFERRED TO THE
ARCHITECT.

A	Detail Revised	Apr 23
T	Tender Amendments	Oct 22
T	Tender	Aug 22
REV.	AMENDMENT	DATE

**THOMAS
FORD
& PARTNERS**
CHARTERED
ARCHITECTS
SURVEYORS

177 KIRKDALE
SYDENHAM • LONDON • SE26 4QH
TEL 020 8659 3250 • FAX 020 8659 3146
EMAIL tfp@thomasford.co.uk

PROJECT 41 DOUGHTY STREET RENOVATION CAMDEN			
TITLE NEW CASEMENT WINDOW AS PROPOSED			
DRAWN Sed	DATE Aug 22	SCALES 1:1/2/10@A1	CHECKED
PROJECT REF. 381401		DRG. No. DET-52	REV A