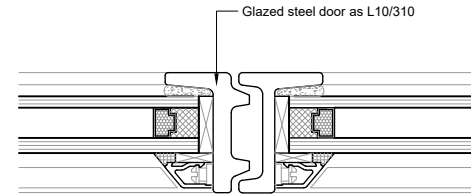
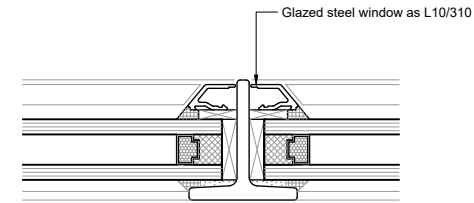


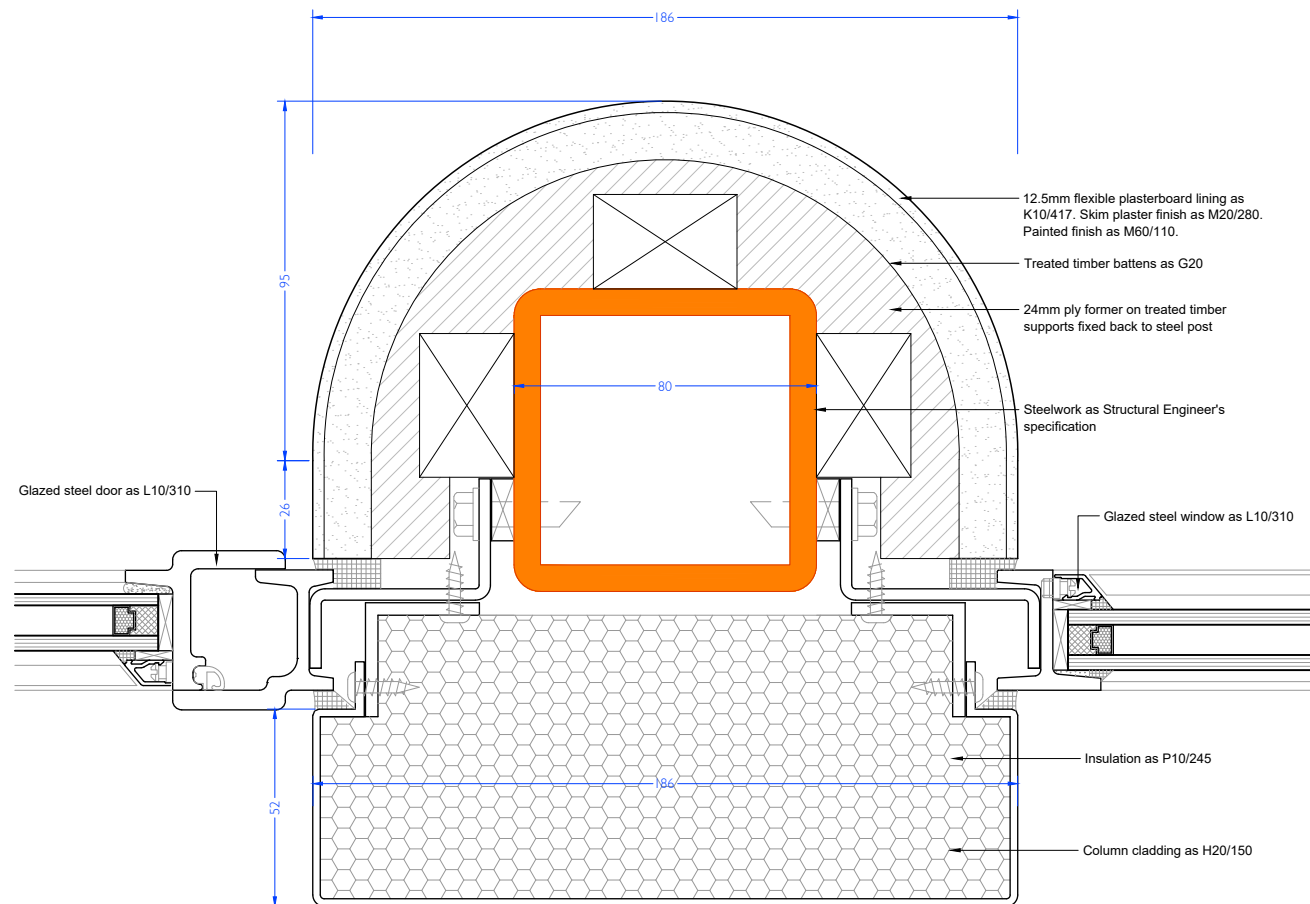
1 OPENING VENT - WALL FIXING
DET-51 STEEL DOORS & WINDOWS



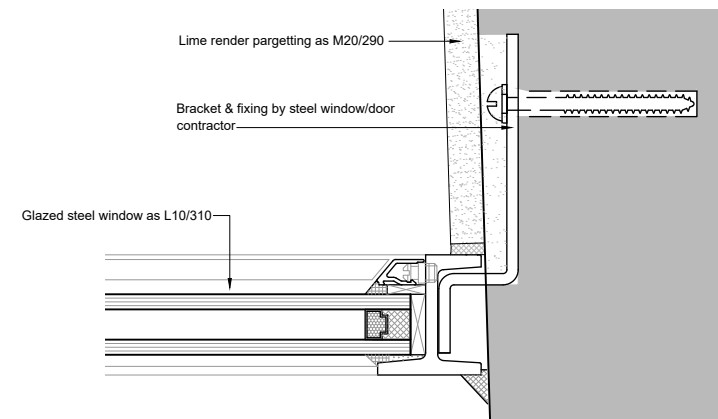
2 MEETING STILE
DET-51 STEEL DOORS & WINDOWS



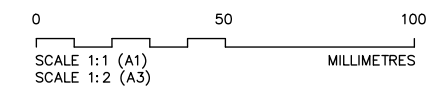
4 FIXED VENT MULLION
DET-51 STEEL DOORS & WINDOWS



3 COLUMN FIXING
DET-51 STEEL DOORS & WINDOWS



5 FIXED VENT JAMB
DET-51 STEEL DOORS & WINDOWS



DO NOT SCALE DRAWINGS. THE CONTRACTOR IS RESPONSIBLE FOR CHECKING DIMENSIONS & ANY DISCREPANCY IS TO BE REFERRED TO THE ARCHITECT.

A	Construction	10.02.23
T1	Tender Amendments	Oct 22
T	Tender	Aug 22
REV.	AMENDMENT	DATE

THOMAS FORD & PARTNERS
CHARTERED ARCHITECTS SURVEYORS

177 KIRKDALE
SYDENHAM • LONDON • SE26 4QH
TEL 020 8659 3250 • FAX 020 8659 3146
EMAIL tf@thomasford.co.uk

PROJECT
41 DOUGHTY STREET
RENOVATION
CAMDEN

TITLE
STEEL DOORS & WINDOWS
DETAILS - SHEET 1
AS PROPOSED

DRAWN	DATE	SCALE	CHECKED
Sed	Apr 22	1:1 (A1)	
PROJECT REF.	DWG. No.	REV.	
381401	DET-51	A	