

- KEY:
- 1

Location and size of habitat signage that has now been removed but left markings on facade to be cleaned.

8

New/ Repaired Portland stone wall paneling

9

Engraved lettering

10

Recessed downlights

11

Glazed sliding doors, fixed panes with bronze effect frames

12

Marble paving

13

Bronze effect inlaid lettering

14

inlaid bronze effect edging

15

Heals wall mounted signage

16

New Bronze Effect Metal pillars
- 23

New retail lighting track to be installed alongside extension of MEP services at high level

24

New Amtico timber effect flooring as per application 2022/1961/L (appropriate thresholds to be integrated as required)

25

New high quality matwell

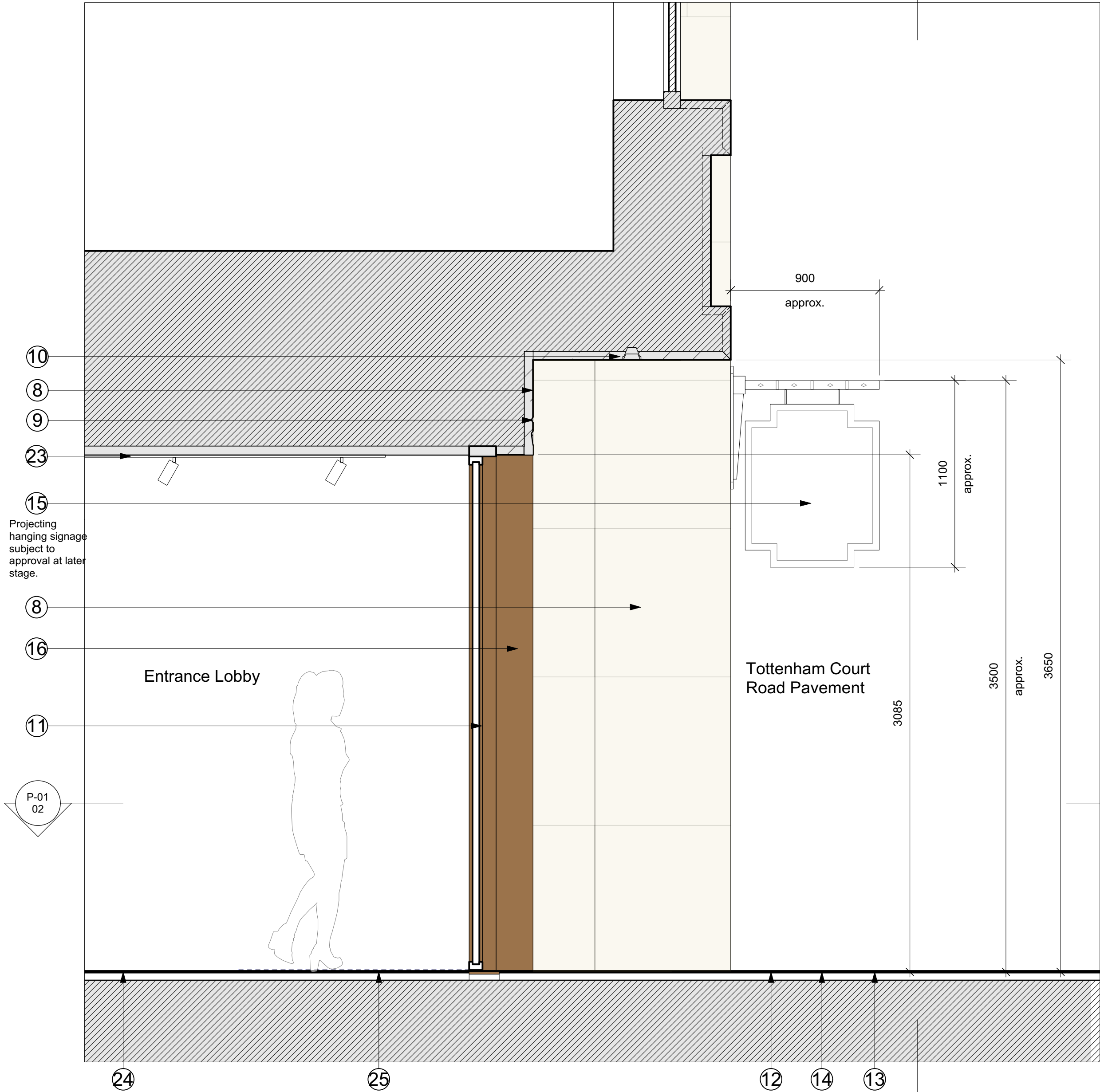
ME-01  
01



1 Tottenham Court Road Elevation  
Scale: 1:20



ME-01  
03



2 Tottenham Court Road Section  
Scale: 1:20

© Buckley Gray Yeoman Ltd.

All dimensions to be checked on site prior to commencement of any works, and/or preparation of any shop drawings. Sizes of and dimensions to any structural elements are indicative only. See structural engineers drawings for actual sizes/dimensions. Sizes of and dimensions to any service elements are indicative only. See service engineers drawings for actual sizes and dimensions.  
This drawing to be read in conjunction with all other Architect's drawings, specifications and other Consultants' information. All proprietary systems shown on this drawing are to be installed strictly in accordance with the Manufacturers/Suppliers recommended details.  
Any discrepancies between information shown on this drawing and any other contract information or manufacturers/suppliers recommendations is to be brought to the attention of the Architect.

DO NOT SCALE FROM THIS DRAWING.

DRAWING NOTES:

P4 19/12/2022 Issued for Planning  
P3 11/11/22 Issued for Planning  
P2 30/05/22 Issued for Planning  
P1 13/05/22 Issued for Planning  
REV. DATE NOTE

HRB  
HRB  
DRAWN

CLIENT  
**General Projects**

PROJECT  
**Heal's Building**

DWG No.  
**1215\_PL3A-ME-01**

DRAWING  
**Tottenham Court Road Facade:  
Proposed Heal's Entrance**

STATUS  
**PLANNING**

SCALE  
**1:20 @ A1  
1:40 @ A3**

APPROVED  
**NJ**

DATE  
**November 2022**

**BGY**  
BUCKLEY GRAY YEOMAN  
+ 44 20 7033 9913  
BGY.CO.UK

- ① Location and size of habitat signage that has now been removed but left markings on facade to be cleaned.
- ⑧ New/ Repaired Portland stone wall paneling
- ⑨ Engraved lettering
- ⑩ Recessed downlights
- ⑪ Glazed sliding doors, fixed panes with bronze effect frames
- ⑫ Marble paving
- ⑬ Bronze effect inlaid lettering
- ⑭ inlaid bronze effect edging
- ⑮ Heals wall mounted flag signage
- ⑯ New Bronze Effect Metal pillars
- ⑰ New retail lighting track to be installed alongside extension of MEP services at high level
- ⑱ New Amtico timber effect flooring as per application 2022/1961/L (appropriate thresholds to be integrated as required)
- ⑲ New high quality matwell

ME-01 2

Entrance Lobby

24

25

11

16

8

12

13

14

EQ

EQ

420

HEAL'S

8

15

900 approx

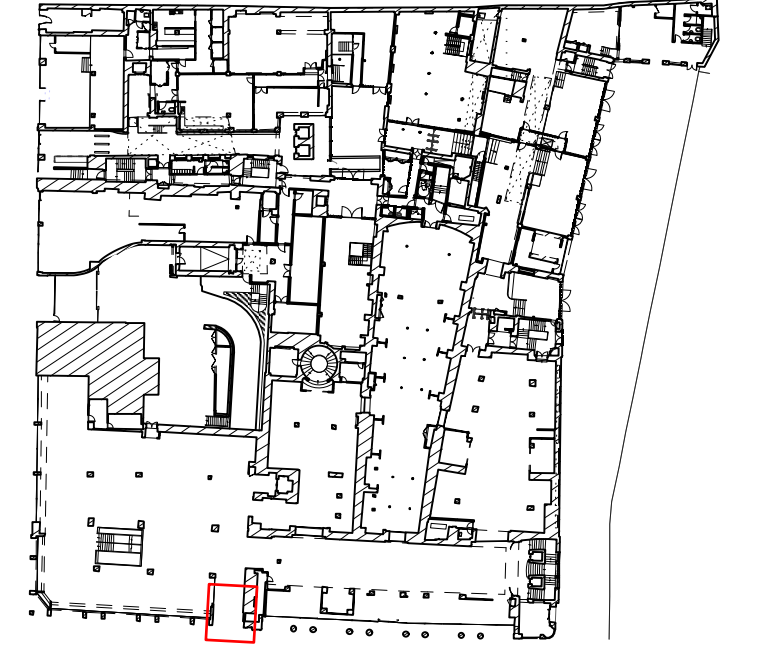
Projecting hanging signage subject to approval at later stage

ME-01 1

Tottenham Court Road Pavement

1 Proposed Ground Floor Plan  
Scale: 1:20

0 5



All dimensions to be checked on site prior to commencement of any works, and/or preparation of any shop drawings. Sizes of and dimensions to any structural elements are indicative only. See structural engineers' drawings for actual sizes/dimensions. Sizes of and dimensions to any service elements are indicative only. See service engineers' drawings for actual sizes and dimensions.

This drawing to be read in conjunction with all other Architect's drawings, specifications and other consultants' information. All proprietary systems and materials to be installed strictly in accordance with the Manufacturers/Suppliers recommended details.

Any discrepancies between information shown on this drawing and any other contract information or manufacturers/suppliers recommendations is to be brought to the attention of the Architect.

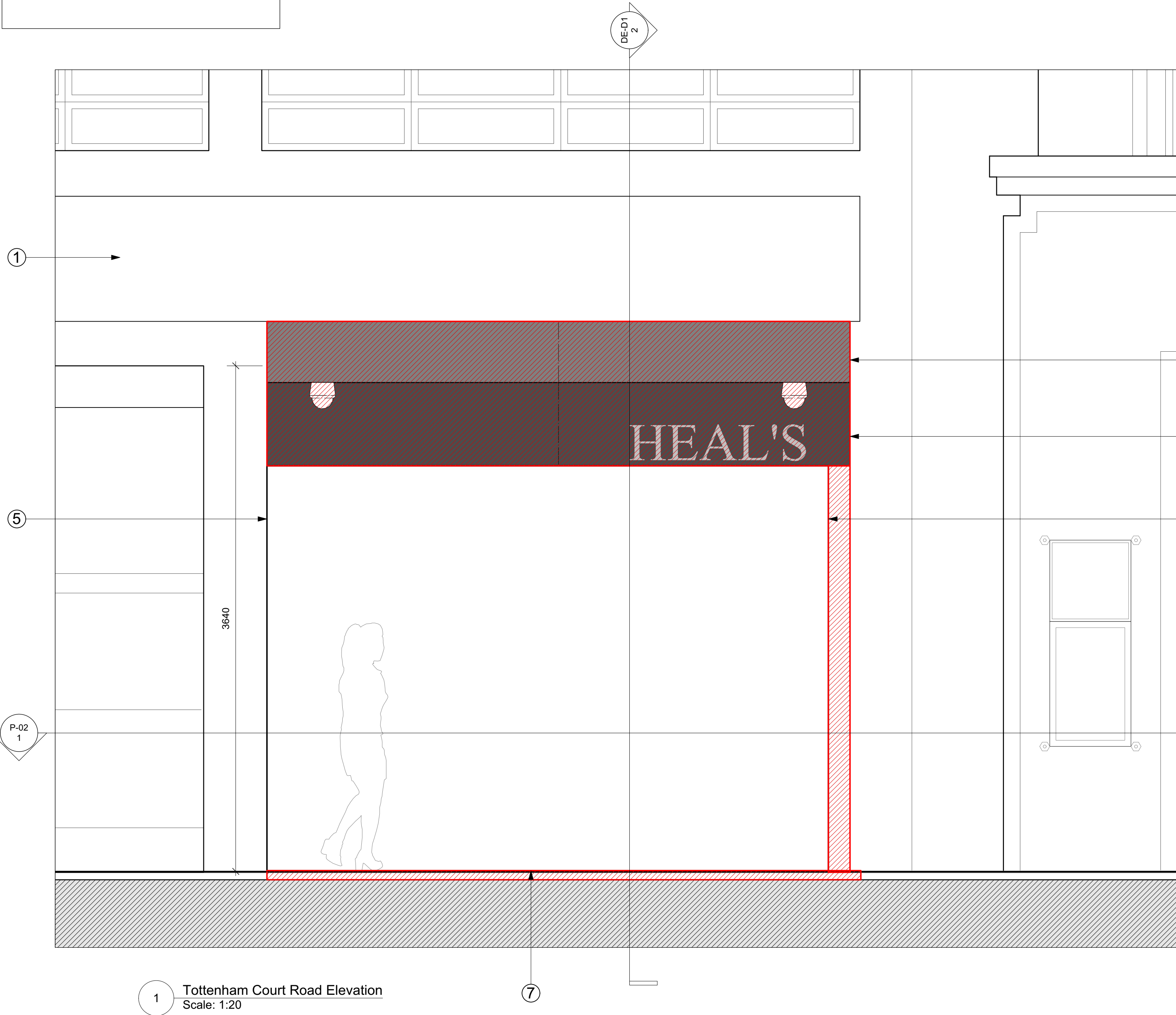
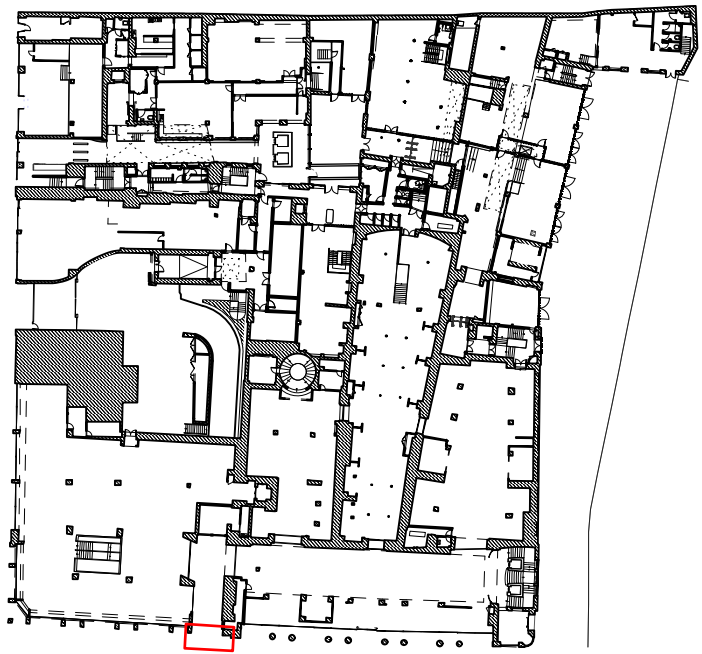
P4	19/12/2022	Issued for Planning
P3	11/11/22	Issued for Planning
P2	30/05/22	Issued for Planning
P1	13/05/22	Issued for Planning
REV. DATE	NOTE	

SCALE	DATE
<b>1:20 @ A1</b>	<b>November 2022</b>
<b>1:40 @ A3</b>	

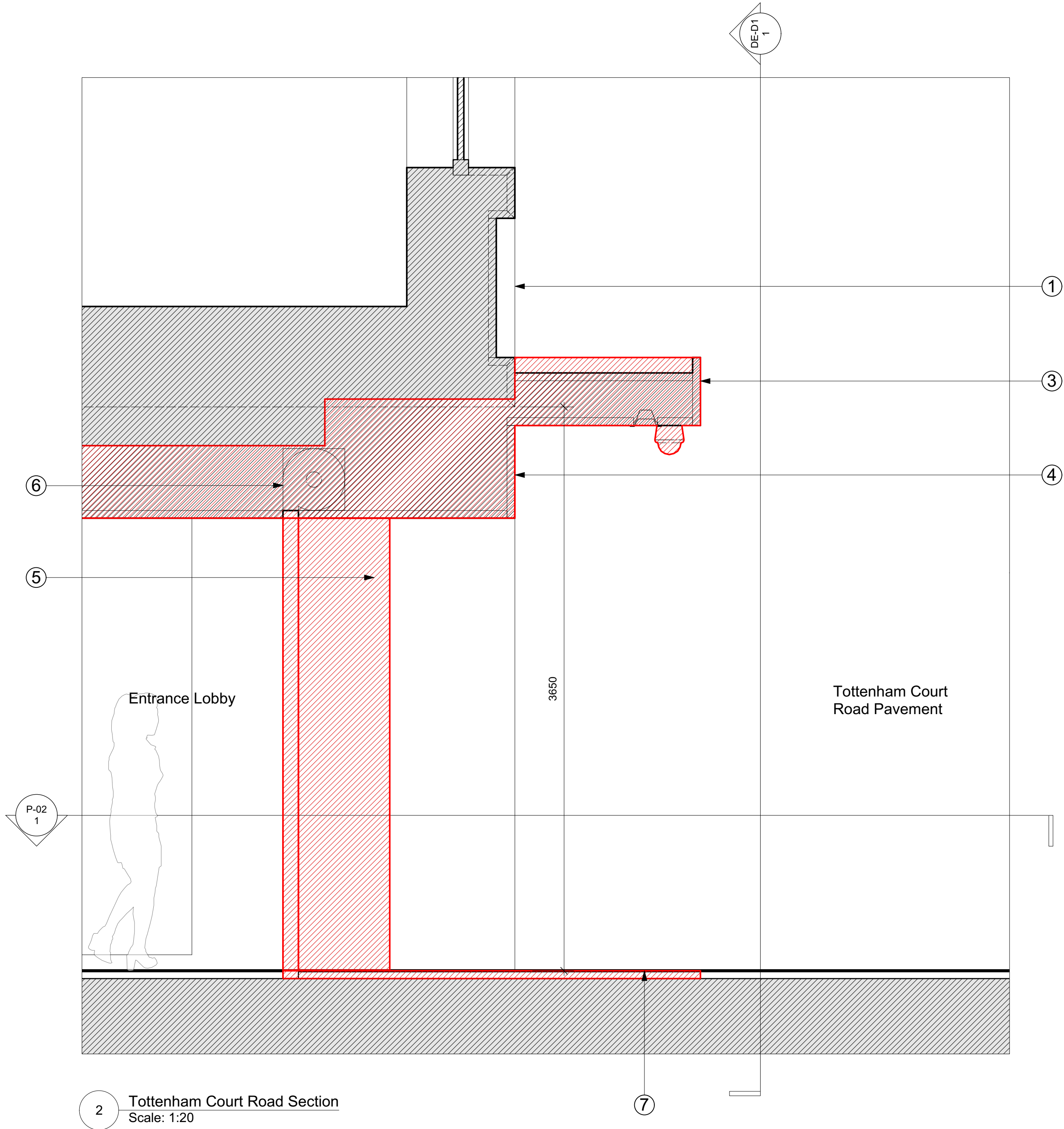
**BGY**  
BUCKLEY GRAY YEOMAN  
+ 44 20 7033 9913  
BGY.CO.UK



- KEY:
- ① Location and size of habitat signage that has now been removed but left markings on facade - TO BE CLEANED
  - ③ Existing PPC Metal projecting canopy- a later addition to the 1960s extension - TO BE CAREFULLY REMOVED
  - ④ Existing PPC Metal bulkhead- a later addition to the 1960s extension - TO BE CAREFULLY REMOVED
  - ⑤ Existing Portland Stone wall panels to entrance reveals - TO BE CAREFULLY REPAIRED/ REMOVED DEPENDING ON CONDITION
  - ⑥ Existing recessed roller shutter, housing and guide rails - TO BE CAREFULLY REMOVED
  - ⑦ Existing marble paving area - TO BE CAREFULLY REMOVED



1 Tottenham Court Road Elevation  
Scale: 1:20



2 Tottenham Court Road Section  
Scale: 1:20

© Buckley Gray Yeoman Ltd.

All dimensions to be checked on site prior to commencement of any works, and/or preparation of any shop drawings. Sizes of and dimensions to any structural elements are indicative only. See structural engineers drawings for actual sizes/dimensions. Sizes of and dimensions to any service elements are indicative only. See service engineers drawings for actual sizes and dimensions.

This drawing to be read in conjunction with all other Architect's drawings, specifications and other Consultants' information. All proprietary systems shown on this drawing are to be installed strictly in accordance with the Manufacturers/Suppliers recommended details.

Any discrepancies between information shown on this drawing and any other contract information or manufacturers/suppliers recommendations is to be brought to the attention of the Architect.

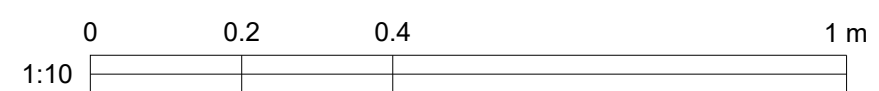
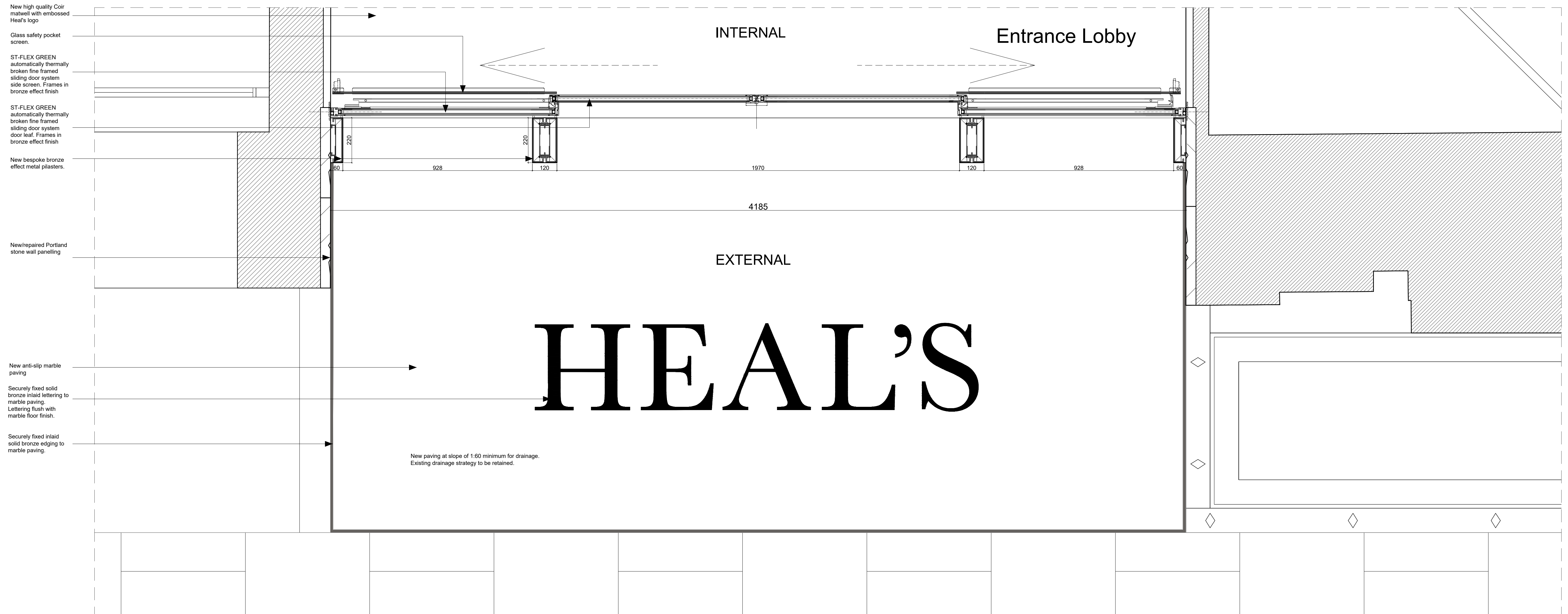
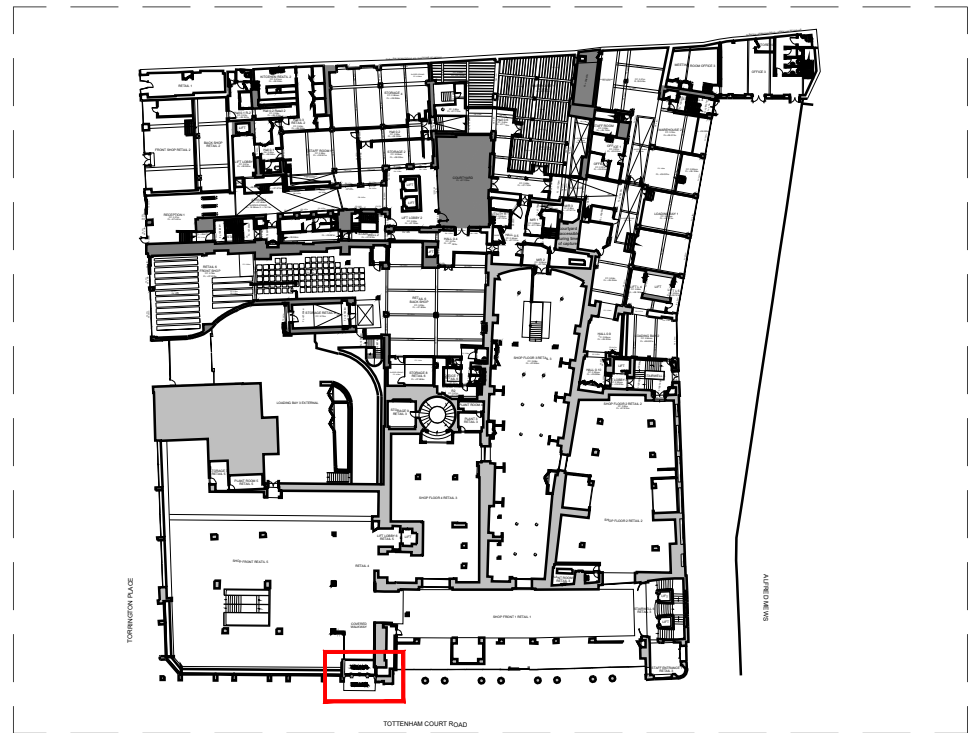
DO NOT SCALE FROM THIS DRAWING.

DRAWING NOTES:

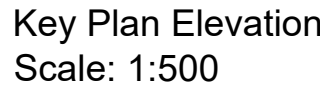
P1 13/05/22 Issued for Planning  
REV. DATE NOTE

CLIENT <b>General Projects</b>	DRAWING <b>Tottenham Court Road Facade: Demolition Heal's Entrance</b>	
PROJECT <b>Heal's Building</b>	STATUS <b>PLANNING</b>	APPROVED <b>NJ</b>
DWG No. <b>1215_PL3A-DE-D1</b>	Revision <b>P1</b>	SCALE <b>1:20 @ A1 1:40 @ A3</b>
		DATE <b>May 2022</b>

**BGY**  
BUCKLEY GRAY YEOMAN  
+ 44 20 7033 9913  
BGY.CO.UK



KEY	REV	DATE	DESCRIPTION	NOTES			CLIENT: GENERAL PROJECTS	NOTE	LOCATION	THE HEAL'S BUILDING 196 TOTTENHAM COURT LONDON EC2A 3PD W1T 7LQ	WHITE RED ARCHITECTS 45 Charlotte Road EC2A 3PD TEL: 020 7859 4521 whitered.co.uk				
	01	20/01/2023	PLANNING ISSUE				PROJECT MANAGER & QS: QUARTZ PROJECT SERVICES	1. Do not scale form this drawing. 2. All dimensions to be checked on site by the contractor and such dimensions to be their responsibility. 3. Report all drawings errors, omissions, and discrepancies to the architect. 4. This document may be issued in an uncontrolled CAD format to enable others to use it as background information to make alterations and/or additions. In that instance the file will be accompanied by a PDF version. It is for those making such alterations and additions to ensure that they make use of current background information. WRA Ltd Accepts no liability for any such alterations or additions to the background information or arising out of changes to background information which occur prior to alterations or additions being made.			PROJECT NAME: 2022/2462/P - The Heals Building - Phase 3A				
	02	21/02/2023	INLAID LETTERING UPDATED				M.E.P ENGINEER: WATERMANS				DRAWING TITLE: Proposed Entrance Door - Detailed Plan				
							STRUCTURAL ENGINEER: WEBB YATES				DRAWN SE	CHECKED JJ	SCALE @A1 1:10	STATUS PLANNING	
							FIRE ENGINEER: DESIGN FIRE CONSULTANTS				PROJECT NO. 5436	ZONE -	TYPE -	SHEET NO. PL_31_100	REVISION 02
							PLANNING CONSULTANT: TURLEY				NOT FOR CONSTRUCTION				
							CDM CONSULTANT: BRIAN BULFIN ASSOCIATES								
						APPROVED INSPECTOR: SOCOTEC									



Bespoke lettering design to match existing fascia signage in font and size.

New/repaired Portland stone wall panels to ceiling reveal

New bespoke bronze effect metal capping.

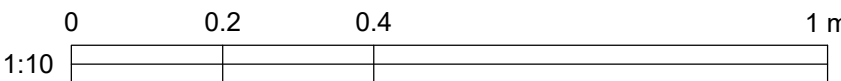
ST-FLEX GREEN automatically thermally broken fine framed sliding door system side screen. Frames in bronze effect finish

ST-FLEX GREEN automatically thermally broken fine framed sliding door system door leaf. Frames in bronze effect finish

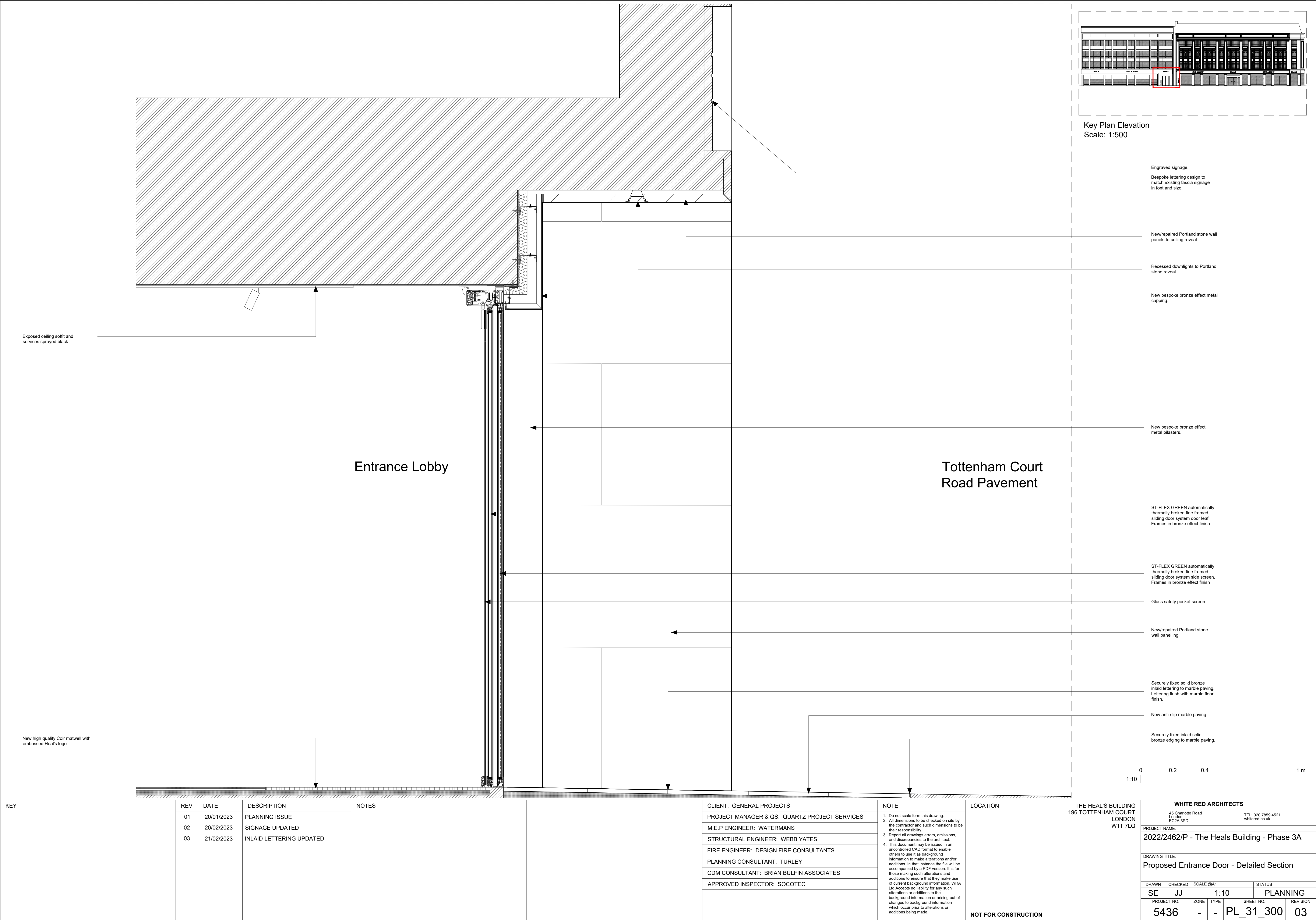
New bespoke bronze effect metal pilasters.

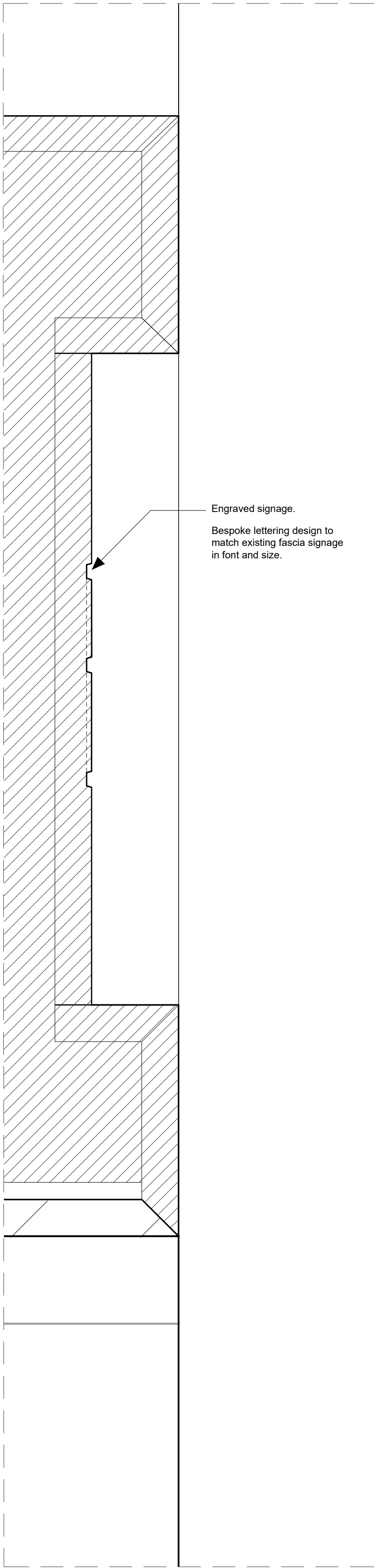
New/repaired Portland stone wall  
panelling

### New anti-slip marble paving

[illegible]







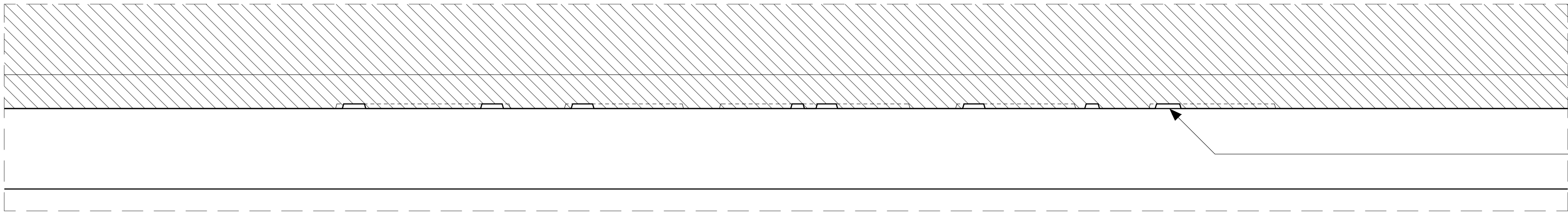
1. Section detail  
Scale: 1:5

Engraved signage.  
Bespoke lettering design to match existing fascia signage in font and size.



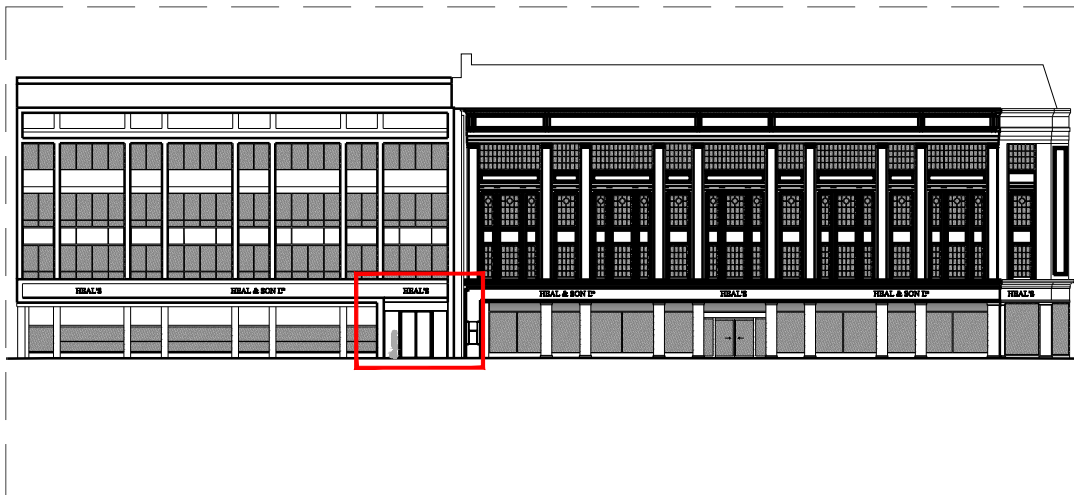
2. Elevation detail  
Scale: 1:5

Engraved signage.  
Bespoke lettering design to match existing fascia signage in font and size.

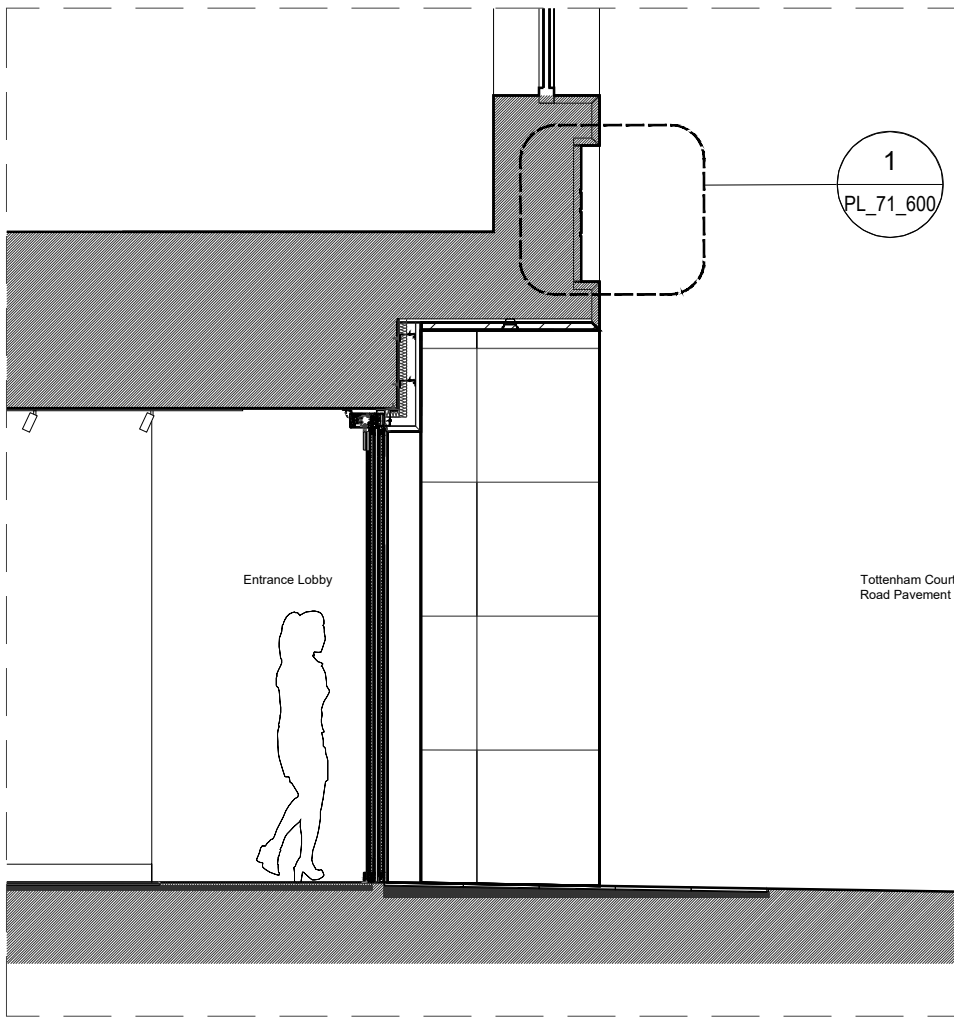


3. Plan detail  
Scale: 1:5

Engraved signage.  
Bespoke lettering design to match existing fascia signage in font and size.



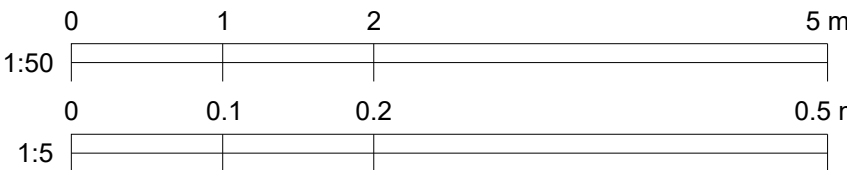
Key Plan Elevation  
Scale: 1:500



Section guide  
Scale: 1:50



Elevation guide  
Scale: 1:50



KEY	REV	DATE	DESCRIPTION	NOTES	CLIENT: GENERAL PROJECTS	NOTE	LOCATION	THE HEAL'S BUILDING 196 TOTTENHAM COURT LONDON W1T 7LQ	WHITE RED ARCHITECTS 45 Charlotte Road London EC2A 3PD TEL: 020 7859 4521 whitered.co.uk				
	01	20/01/2023	PLANNING ISSUE		PROJECT MANAGER & QS: QUARTZ PROJECT SERVICES	1. Do not scale from this drawing. 2. All dimensions to be checked on site by the contractor and such dimensions to be their responsibility.							
	02	20/02/2023	SIGNAGE UPDATED		M.E.P ENGINEER: WATERMANS	3. Report all drawings errors, omissions, and discrepancies to the architect.							
					STRUCTURAL ENGINEER: WEBB YATES	4. This document may be issued in an uncontrolled CAD format to enable others to use it as background information to make alterations and/or additions. In that instance the file will be accompanied by a PDF version. It is for those making such alterations and additions to ensure that they make use of current background information. WRA Ltd Accepts no liability for any such alterations or additions to the background information or arising out of changes to background information which occur prior to alterations or additions being made.							
					FIRE ENGINEER: DESIGN FIRE CONSULTANTS								
					PLANNING CONSULTANT: TURLEY								
					CDM CONSULTANT: BRIAN BULFIN ASSOCIATES								
					APPROVED INSPECTOR: SOCOTEC								
									PROJECT NAME:				
									2022/2462/P - The Heals Building - Phase 3A				
									DRAWING TITLE:				
									Proposed Entrance Signage - Detailed Plan, Elevation & Section				
									DRAWN	CHECKED	SCALE @A1	STATUS	
									SE	JJ	1:5	PLANNING	
									PROJECT NO.	ZONE	TYPE	SHEET NO.	REVISION
									5436	-	-	PL_71_600	02
									NOT FOR CONSTRUCTION				

# Product Data Sheet

## AkzoNobel Powder Coatings

### Interpon D1036 Matt

#### Product Description

**Interpon D1036 Matt** is a range of powder coatings intended for use on architectural aluminium and galvanized steel. **Interpon D1036 Matt** has been specifically formulated without the use of TGIC.

As part of the **Interpon D 1036** series of architectural powders, **Interpon D1036 Matt** gives excellent exterior durability and colour retention and conforms to the requirements of all the major European architectural finishing standards. All **Interpon D1036 Matt** powders are lead-free and meet the requirements of GSB Standard, Qualicoat Class 1, EN12206, and EN13438 (formerly BS6496 & BS6497), and AAMA 2603.

**Qualicoat License Number:** P-0235 (P/P extension) (France), P-0735 (P/P extension) (Italy), P-0739 (Germany), P-0350 (UK), P-0530 (P/P extension) (Spain), P-0886 (Czech Rep.), P-1126 (Turkey), P-0933 (Russia), P-0850 (Egypt)  
**GSB License Number:** 164b (gloss 30)

#### Powder Properties

<b>Chemical type</b>	Polyester
<b>Appearance</b>	Smooth Matt
<b>Gloss level (EN ISO 2813 (60°))</b>	25-35 gloss units
<b>Specific gravity</b>	1.2 – 1.9 g/cm <sup>3</sup> depending on colour
<b>Particle Size</b>	Suitable for electrostatic spray
<b>Storage</b>	Dry cool conditions below 30°C ( <i>open boxes must be resealed</i> )
<b>Shelf life</b>	24 months below 30°C 12 months below 35°C
<b>Curing schedule (at object temperature)</b>	15-30 minutes at 180°C 12-25 minutes at 190°C 10-20 minutes at 200°C

#### Powder on Powder application:

**1<sup>st</sup> phase:** Melting and partial curing of the base coat suggested 110-120°C for 15-20 min. (object temp) otherwise refer to the instruction of the spraying equipment supplier  
**2<sup>nd</sup> phase:** Application of the wood decorative powder according to the instruction of the spraying equipment supplier  
**3<sup>rd</sup> phase:** Complete curing of the full package for 12-25 minutes at 190°C (object temperature)



Mechanical Tests	Flexibility	ISO 1519 (cylindrical Mandrel)	Pass 5mm
	Adhesion	ISO 2409 (2mm crosshatch)	Gt0
	Erichsen cupping	ISO 1520	Pass >5mm
	Impact resistance	ISO 6272-2	Pass 2,5 Joules (reverse & direct (20 in lb)
	Buchholz Hardness	ISO 2815	>80
	Mar Resistance Martindale Test (for X-Pro series)	CEN/TS 16611:2016	80 runs(5 cycles) Gloss Retention: 45-75% (depending on color)
Environmental and Durability Tests	Acetic acid salt spray	ISO 9227	<16 mm <sup>2</sup> corrosion/10cm, 1000 hours
	Constant humidity	ISO 6270-2	No blistering, creep <1mm (1000 hours)
	Sulphur Dioxide	ISO22479	Pass 24 cycles – no blistering, gloss loss or discoloration
	Permeability	EN12206-1 Par. 5.10	Pressure Cooker – pass 1 hour no defects
	Chemical Resistance	Generally good resistance to acid, alkalis and oil at room temperatures	
	Mortar Resistance	EN12206-1	No effect after 24 hours
	Accelerated Weathering	ISO16474-2 (1000 hrs) ISO11507 QUV B 313 (300 hrs)	Gloss retention ≥50%
	Exterior durability	ISO2810 (1 year)	≥50% gloss retention, Colour retention accords with GSB/Qualicoat Chalking – none in excess of minimum in ASTM D4214-07
Test Conditions	Testing has been determined under laboratory conditions using the following application properties and is for guidance only.		
	Substrate	Aluminium (0.5-0.8 mm Al Mg1)	
	Pretreatment	Chrome free Qualicoat/GSB approved pretreatment	
	Film thickness	60 – 80 microns	
	Cure schedule	18 minutes at 190°C (object temperature)	
	Actual film performance will depend on the individual circumstances in which the product is used.		
Pre-treatment	For maximum protection it is essential to pretreat components prior to the application of Interpon D1036 Matt.  Aluminium components should receive a full multi-stage chromate conversion coating or suitable chrome-free pre-treatment or suitable pre-anodising to clean and condition the substrate.		

Detailed advice should be sought from the pre-treatment supplier.

Galvanised steel requires surface preparation by either multi-stage pretreatment using either zinc phosphate or chromate conversion or controlled sweep blasting. Depending on the type of galvanizing, degassing or use of anti-bubbling additives may be required – follow the procedural advice of the pretreatment supplier.

**Interpon D1036 Matt** products may also be used on cast or mild steel. For outdoor use, **Interpon Redox PZ** anti-corrosive primer over a correctly prepared substrate is recommended.

#### Application

**Interpon D1036 Matt** powders can be applied by manual or automatic electrostatic spray or tribo-charging equipment. For solid shades, unused powder can be reclaimed up to a maximum of 30% using suitable equipment and recycled through the system. Please consult AkzoNobel for further details as to the correct mixing ratio for virgin/reclaim powder.

**Interpon D1036 Matt** powders should be applied at minimum 60µm.

All powders can show small colour differences from batch to batch, this is normal and unavoidable. While AkzoNobel take every precaution to minimize visible differences, this cannot be guaranteed. Applicators and fabricators are advised to use a single batch for parts that will be assembled together. Differences are more likely with special effect powders.

Bonded products have better application properties than blended products (more stable) but attention should still be paid to line settings in order to avoid “marble effect” and changes in aspect after recycling. A constant ratio between virgin and recycled powders should be fixed by the coater in order to achieve a consistent effect. For more details it is suggested to read the “**Metallic Application Guideline**”.

Different substrates (aluminium, steel, galvanized steel), use of primer, and big changes in film thickness may give a different aspect.

Products with different codes should not be mixed even if same colour and gloss.

#### Post Application

For specific advice on the suitability of post coating processes such as bending or the use of sealants, adhesives, thermal break, cleaning etc, please consult AkzoNobel.

#### Maintenance

For specific advice on Cleaning and Maintenance please consult the Interpon D series *Cleaning and Maintenance Guidelines* available from AkzoNobel.

#### Safety Precautions

Please consult the Material Safety Datasheet (MSDS)

#### Disclaimer

**IMPORTANT NOTE:** The information in this data sheet is not intended to be exhaustive and is based on the present state of our knowledge and on current laws: any person using the product for any purpose other than that specifically recommended in the technical data sheet without first obtaining written confirmation from us as to the suitability of the product for the intended purpose does so at his own risk. It is always the responsibility of the user to take all necessary steps to fulfil the demands set out in the local rules and legislation. Always read the Material Data Sheet and the Technical Data Sheet for this product if available. All advice we give or any statement made about the product by us (whether in this data sheet or otherwise) is correct to the best of our knowledge but we have no control over the quality or the condition of the substrate or the many factors affecting the use and application of the product.

Therefore, unless we specifically agree in writing otherwise, we do not accept any liability whatsoever for the performance of the product or for any loss or damage arising out of the use of the product. All products supplied and technical advices given are subject to our standard terms and conditions of sale. You should request a copy



---

of this document and review it carefully. The information contained in this data sheet is subject to modification from time to time in the light of experience and our policy of continuous development. It is the user's responsibility to verify that this data sheet is current prior to using the product.

Brand names mentioned in this data sheet are trademarks of or are licensed to AkzoNobel

---

<http://www.interpon.com/contact-us/>

Copyright © 2021 Akzo Nobel Powder Coatings Ltd. Interpon is a registered trademark of AkzoNobel

Interpon D1036 Matt - Issue 6

Last Revision Date: 16/03/2021