

From: George Kythreotis (Vivendi Architects)

Sent: 24 April 2023 15:17

To: Tony Young

Subject: RE: Planning application - 2023/1257/P - Shropshire House, 179 Tottenham Court Road

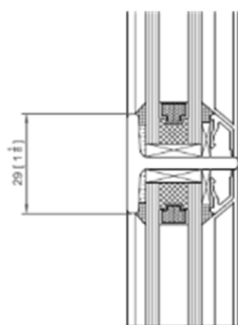
Dear Tony,

I hope you had a good weekend.

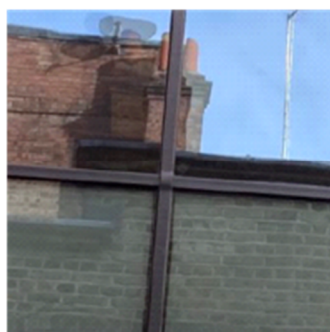
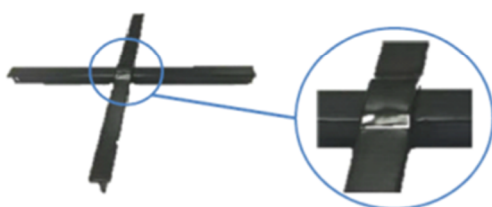
Thank you for the validation and update. Following your comments, I can confirm that the glazing bars are structural (go inside to outside and not planted on) and an integral part of the window. I have spoken to Crittall who are the manufacturers of the proposed replacement windows and you will note their comment:

Hi George,

In reply to your email I can confirm our quotation allows for our Corporate W20 frames, Genuine' steel glazing bars with 'Fenestra' cruciform joints. Please see below section drawing and images to illustrate further.



• FENESTRA jointed



Our Corporate W20 range could be described as our "go to" product, it provides the advantage of narrow elegant profiles, offering the closest match to earlier steel framed windows and doors. The frames are hot dip galvanized for corrosion protection and factory powder coated to any RAL colour in our in house paint plant. The system can be both single glazed and double glazed as required with double glass offering centre pane u values of 1.1 which when assessed in line with EN14351

I have also included links below to a few completed projects in London which I hope will support the application.

<https://www.crittall-windows.co.uk/about/case-study/crittall-windows-hit-thermal-targets-at-world-heritage-site/>

<https://www.crittall-windows.co.uk/about/case-study/science-museum/>

<https://www.crittall-windows.co.uk/about/case-study/melbourne-house/>

I trust this will provide enough information for the planners but feel free to call or message if they have any further comments or questions.

I hope the above satisfies your queries. You will also note that we submitted a detail of the metal frame as part of the planning application submission. For ease of reference, I attach the drawing again.

Please do not hesitate to contact me should you have any further queries.

Kind regards

George Kythreotis (Director)
BArch (Hons) Dip Arch ARB

Vivendi Architects LTD
Unit E3U, Bounds Green Industrial Estate, Ringway, London, N11 2UD
Tel: 020 3232 4000/4050
Fax: 020 3232 4000