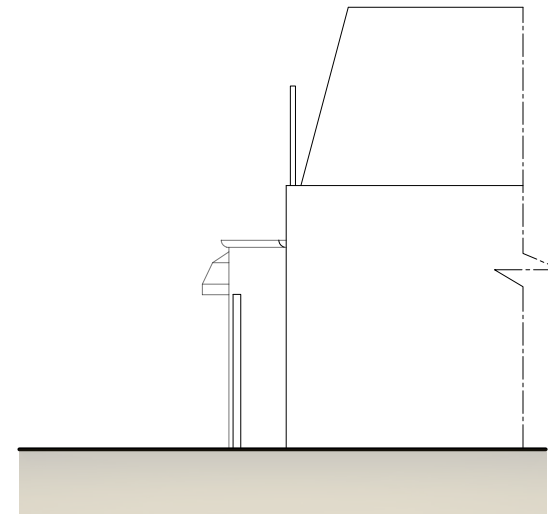


ELEVATION A EXISTING

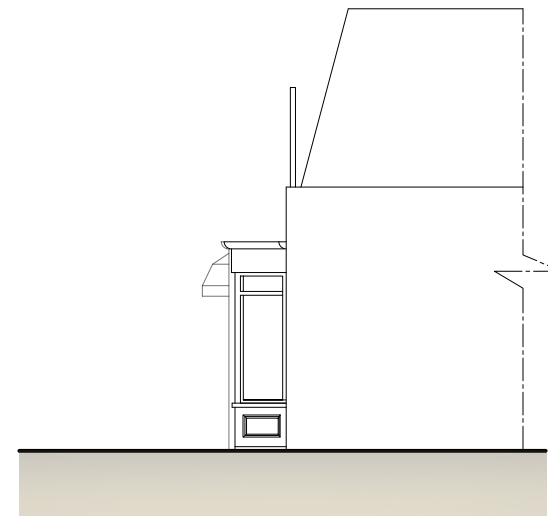


ELEVATION B EXISTING



ELEVATION A PROPOSED

- ① Timber fascia board painted white and non-illuminated signage
- ② Timber windows painted black
- ③ Timber stall riser with raised panels painted black
- ④ Glazed timber door with lower panel all painted black.
- ⑤ White render.



ELEVATION B PROPOSED



Suite 13, Rivers Lodge
Harpenden, Herts
AL5 2LD

t: 01582 287 280
e: enquiries@planningconsent.com
w: www.planningconsent.com

Drawing Title:
Existing & Proposed Elevations
Project:
New shopfront

Scale: 1:100@A1
Drwn: shp
Date: apr 2023

Location:
12 Heath Street
London NW3

Drawing No:
5342 03

Copyright and design right held by Stuart Henley & Partners Ltd. No unauthorised reproduction permitted.