

This drawing is the copyright of Axiom Architects. The contractor is to check all site dimensions and levels before work starts. This drawing must be read with and checked against all structural and other specialist drawings, specification and bills of quantities. Notify architect of any discrepancies. The contractor is to comply with all current British Standards and Building Regulations whether or not specifically stated on these drawings. **Do not scale** from drawings.

KEY:

Vertical fire stop required to suit different depth and geometry conditions due to chamfer of window reveals and brick cladding. Fire stopping detail and design confirmed and developed in collaboration with Siderise, to be reviewed and further coordinated with brick subcontractor.

Refer to Fire Strategy Plans and Elevations:

- 4603-WD-140 G-BASEMENT FIRE STRATEGY GA PLAN
- 4603-WD-141 F-GF FIRE STRATEGY GA PLAN
- 4603-WD-142 E-1F FIRE STRATEGY GA PLAN
- 4603-WD-143 E-2F FIRE STRATEGY GA PLAN
- 4603-WD-144 E-3F FIRE STRATEGY GA PLAN
- 4603-WD-145 E-4F FIRE STRATEGY GA PLAN
- 4603-WD-146 E-ROOF FIRE STRATEGY GA PLAN

- 4603-WD-906 A-EAST FIRE BARRIER ELEVATION
- 4603-WD-907 A-SOUTH FIRE BARRIER ELEVATION
- 4603-WD-908 A-WEST FIRE BARRIER ELEVATION
- 4603-WD-909 A-NORTH FIRE BARRIER ELEVATION

NOTE:
Existing site and building survey information derived from drawings produced by Point2Surveyors.

General Notes:

These drawings should be read in conjunction with the following information:

- Morris and Company Outline Specification
- Designer's Health & Safety Risk Register
- Project Risk Register

This information should also be read in conjunction with the following information, prepared by other consultants

- Internal Layout Detailed Drawings
- Structural Engineers Drawings and Specification (Clancy)
- MEP Engineers Drawings and Specification (PSH Consulting)
- Acoustic Report (24 Acoustic)
- Transport & Servicing Strategy Report (RGP)
- Fire Strategy Report (Jenson Hughes)
- Approved Inspector Report (BRCS)

Some areas of the scheme requires input from specialist consultants. Without input from these specialist consultants the design in based on a series of assumptions and may be subject to design change.

These are listed below, but not limited to:

- Sustainability consultant
- Landscape Architect
- Facade Access and Maintenance Consultant

Survey Information:

- These drawings combine survey and site information produced by others and provided by client.
- Levels information received from Lane & Frankham and Point2Surveyors.

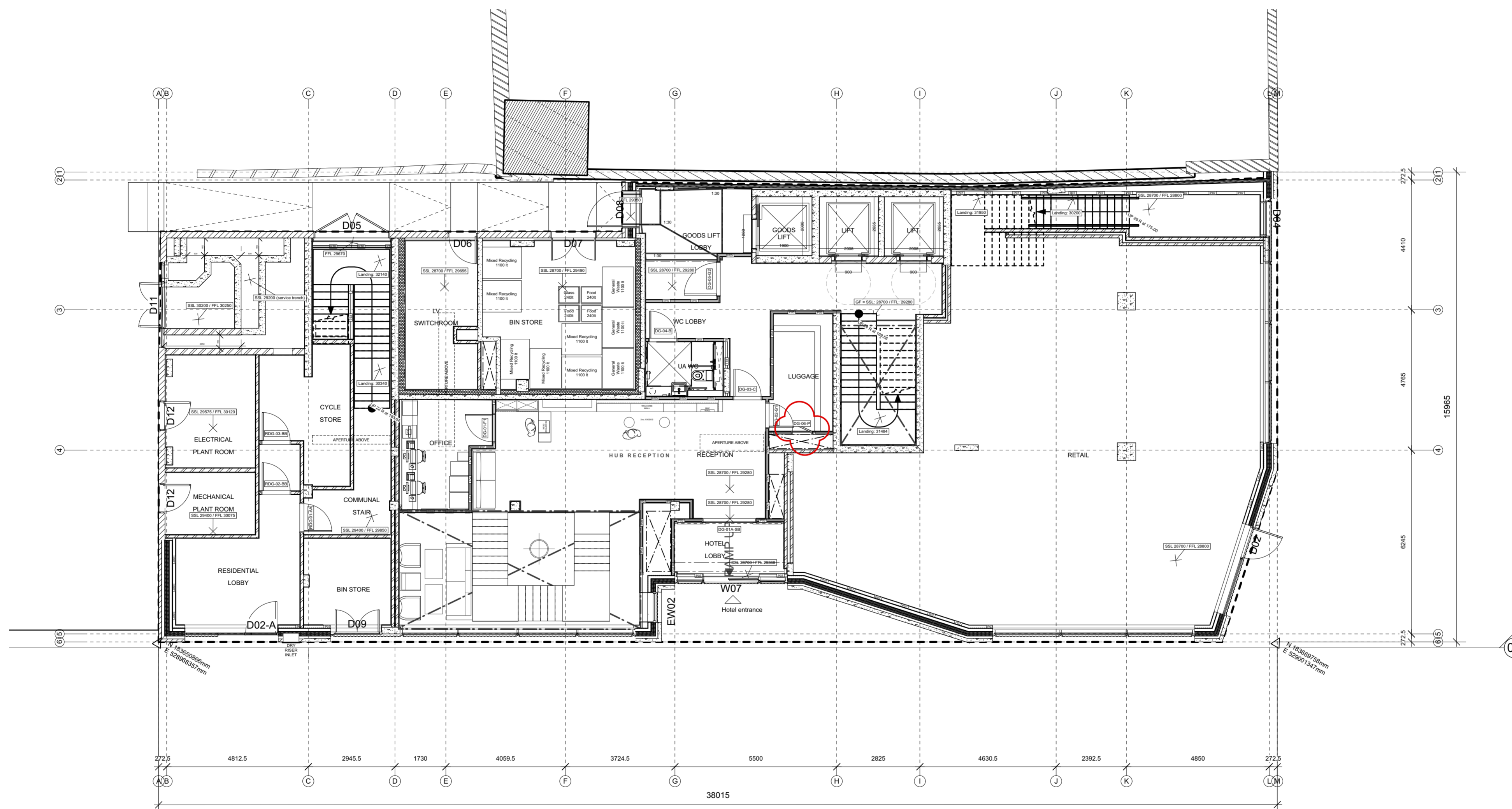
Areas:

- All areas provided are intended for illustrative purposes only.
- The validity of all quantities and numbers be subject to a detailed check, audit and sign off by an RICS chartered surveyor.

Health and Safety:

- The drawing shall be read in conjunction with the health and safety information to be provided in the tender document and/or within the pre-construction information.
- Before commencement of works associated with the drawing refer to all relevant health and safety information for the works including residual risk information.
- The hazards noted are in addition to the normal hazards & risks faced by a competent contractor when dealing with the type of works detailed on this drawing.

Refer to Fire Strategy for Fire Barrier Locations



Rev	Date	Description	By	Chk
B	18/10/22	GF Luggage M&E riser door added	LFC	
A	09/05/22	Fire Strategy Drawing Notes Added	AM	

AXIOM ARCHITECTS
 1 Brooklands Yard Southover High Street Lewes East Sussex BN7 1HU
 Tel. 01273 479434 www.axiomarchitects.co.uk

Client
 Demar BVI Ltd.

Project
 hub by Premier Inn
 115-119 Camden High Street London

Drawing
 Ground Floor GA External and Internals

Scale	Status	Date	Drawn	Checked
1:100	Construction	23/04/21		

Drawing No. Revision

4603-WD-900 B