

**91 Savernake Road
NW3 2LG**

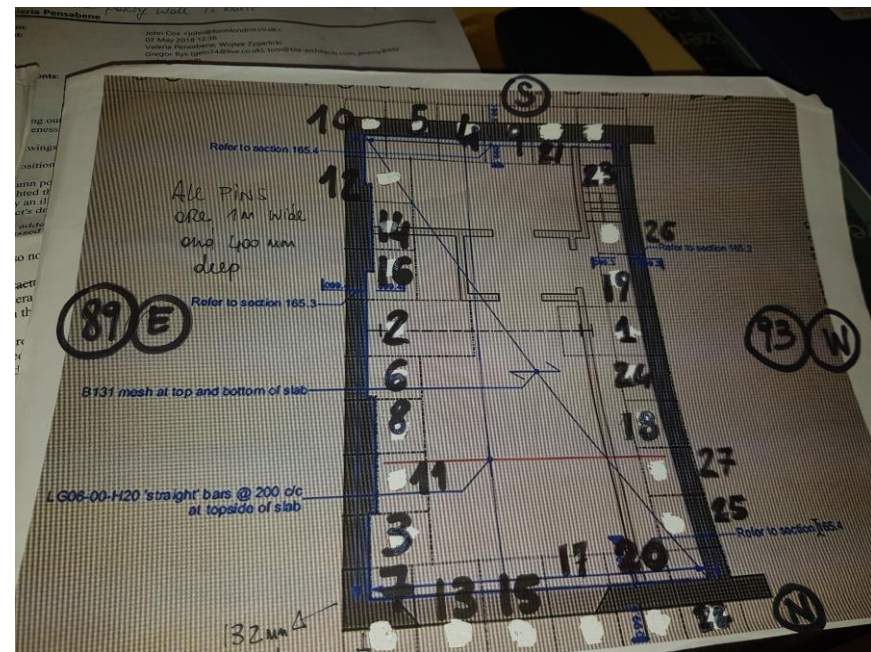
**Photographic evidence of structural works for cellar excavation,
underpinning and insulation.**

Structural works completion on 8th June 2018

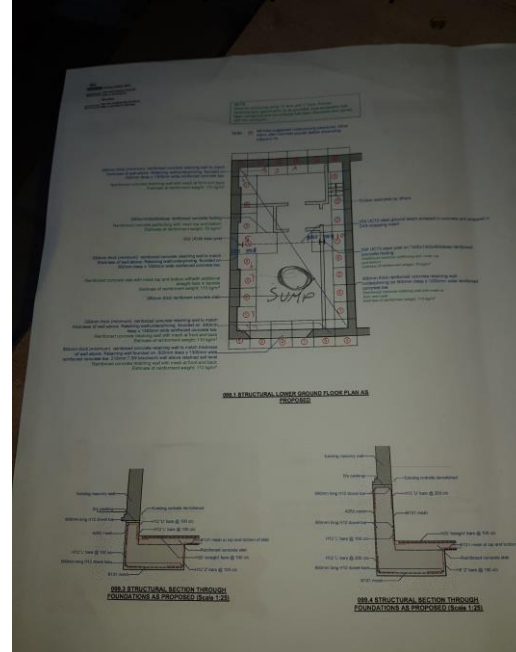
Timeline of structural works carried out for the lower ground floor/cellar

- 31-Oct-2017: Structural engineer excavation and Pin construction plan issued by FORM LONDON LIMITED (“FLL”)
- **19-Feb-2018: Structural works begin. FLL site visit to initiate the works, as per FLL’s letter (Appendix 2)**
- 20-Mar-2018: Excavation work at lower ground/cellar level
- 29-Mar-2018: First pins construction with steel and concrete
- April 2018: Pin construction continues according to FORM LONDON LIMITED’s structural plan
- 4-May-2018: Sump pump equipment delivered on site at 91 Savernake
- May 2018: Pin construction continues according to FORM LONDON LIMITED’s structural plan, preparation for lower ground floor/cellar steel work
- 8-June-2018: Floor steel work and floor concrete pouring.
- **8-June-2018: Structural works completion. FLL’s completion of structural works site visit, as per FLL’s letter (Appendix 2)**
- Second week of June 2018: sump pump housing installation and channelling system to sump pump chamber
- Third and fourth week of June 2018: floor and wall insulation with waterproof membrane channelling humidity and condensation water into the sump pump channelling system
- First week of July 2018: sacrificial screed
- Second week of July 2018: erection of partitions, electrical and plumbing
- Second week of September 2018: Boiler installation

Structural engeenier's concrete pins construction plan (31/10/2017)



Concrete Pins project (31/10/2017)



Existing coal cellar



Cellar/Ground air gap



Excavation to accomodate concrete pins



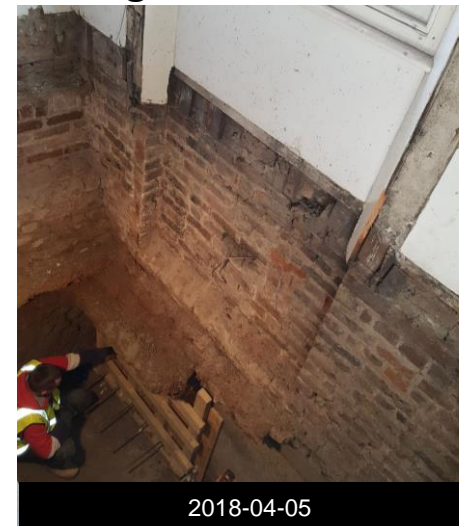
Pin 1 preparation



Concrete Pin n. 1



Excavation, view from ground floor



Detail of wall underpinning and steel ties connection to floor



Sump Pump equipment delivered

Sump pump



2018-05-04

Sump pump housing



2018-05-04

UPS Unit (power back-up)



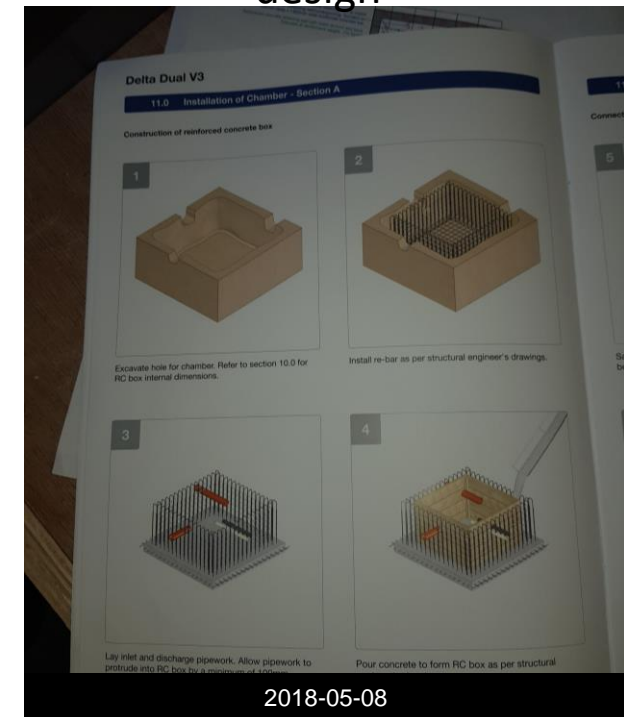
2018-05-04

Sump pump control unit



2018-05-04

Sump pump concrete chamber design



2018-05-08

Concrete pins progression



Detail of wall underpinning



Floor concrete pouring (first layer)



Sewage inspection chamber



Walls and floor concrete underpinning complete



Detail of wall pins with steel ties connection with floor pins



Floor steel work and sump pump chamber preparation



Sump pump chamber's steel work reinforcement



Steel work for cellar floor connected to wall pins



Concrete pouring for cellar floor:
Completion of structural works



Detail of new cellar steel beam and column



Floor channeling system from walls to sump pump



New house's manhole



Floor screed and sump pump channelling details



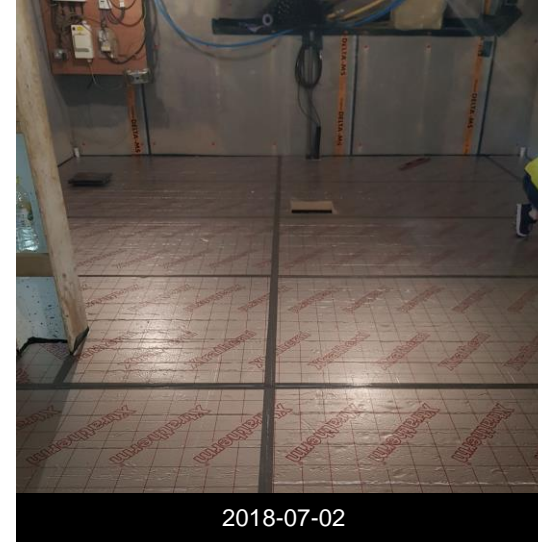
Insulation waterproof wall membrane installation



Insulation waterproof wall and floor membrane installation throughout



10cm Kingspan thermal insulation boards on top of waterproof membrane



10cm Kingspan thermal insulation boards with access to sump pump chamber



Layout of sacrificial 7cm floor screed covering the Kingspan insulation floor boards.



Erection of partitions



Cellar's plumbing works

