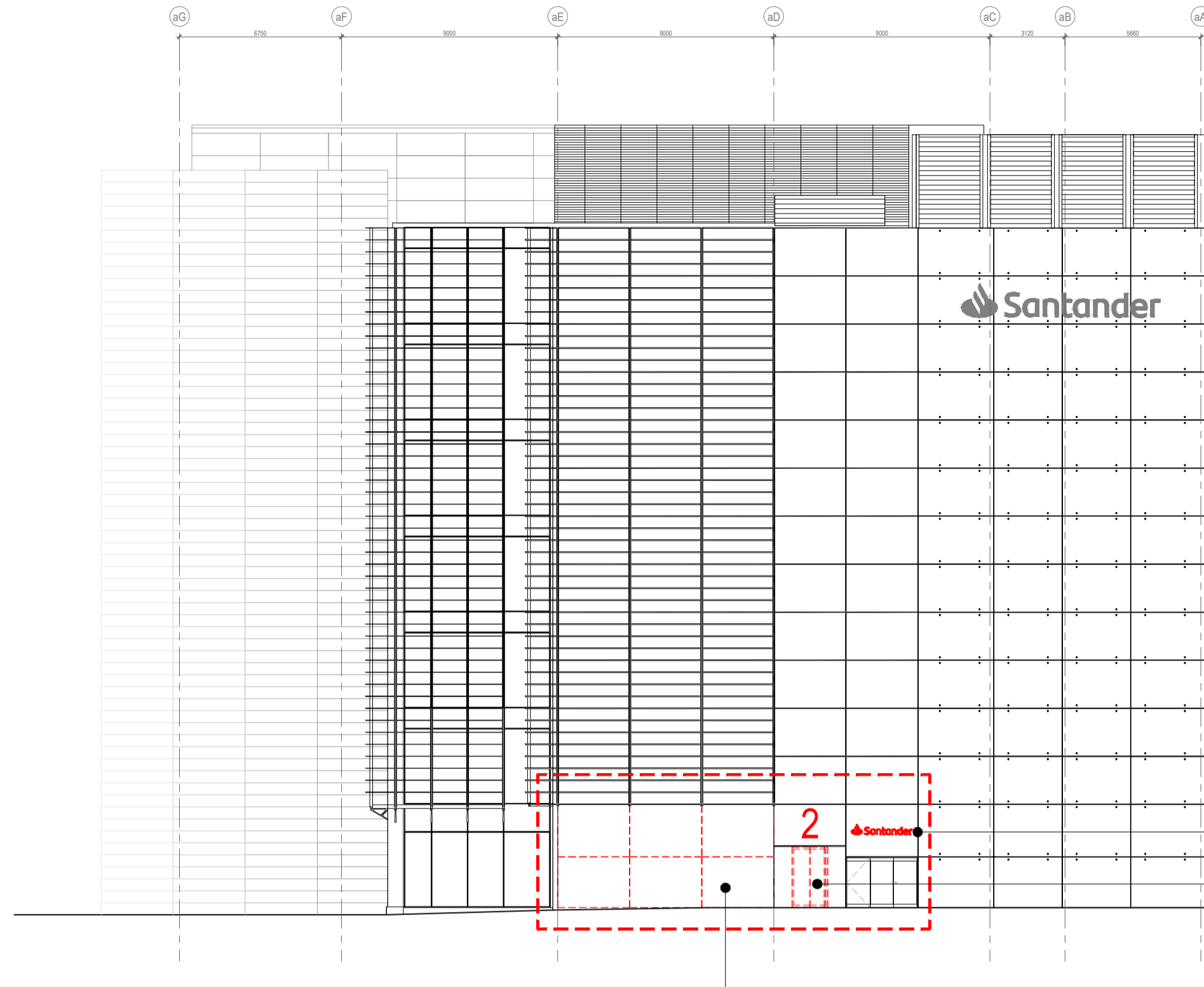


**USE OF DRAWINGS**

DO NOT SCALE FROM THIS DRAWING. USE WRITTEN DIMENSIONS AND CHECK ON SITE. THIS DRAWING IS BASED ON SITE INFORMATION SUPPLIED BY THIRD PARTIES AND ACCURACY OF EXISTING FEATURES IS NOT GUARANTEED. ANY ERROR, OMISSION OR DISCREPANCY NOTED ON OR BETWEEN DRAWINGS AND OTHER DOCUMENTS MUST BE REPORTED IN WRITING IMMEDIATELY. ALL MECHANICAL, ELECTRICAL AND STRUCTURAL LAYOUTS / COMPONENTS ARE INDICATIVE AND MUST BE DESIGNED AND CHECKED BY SPECIALISTS. DO NOT START WORK BEFORE CONFIRMING THAT ALL NECESSARY STATUTORY AND OTHER CONSENTS HAVE BEEN OBTAINED. THIS DRAWING IS COPYRIGHT AND MUST NOT BE DISTRIBUTED WITHOUT PERMISSION. ELECTRONIC CAD FILES MUST NOT BE ALTERED OR COPIED.

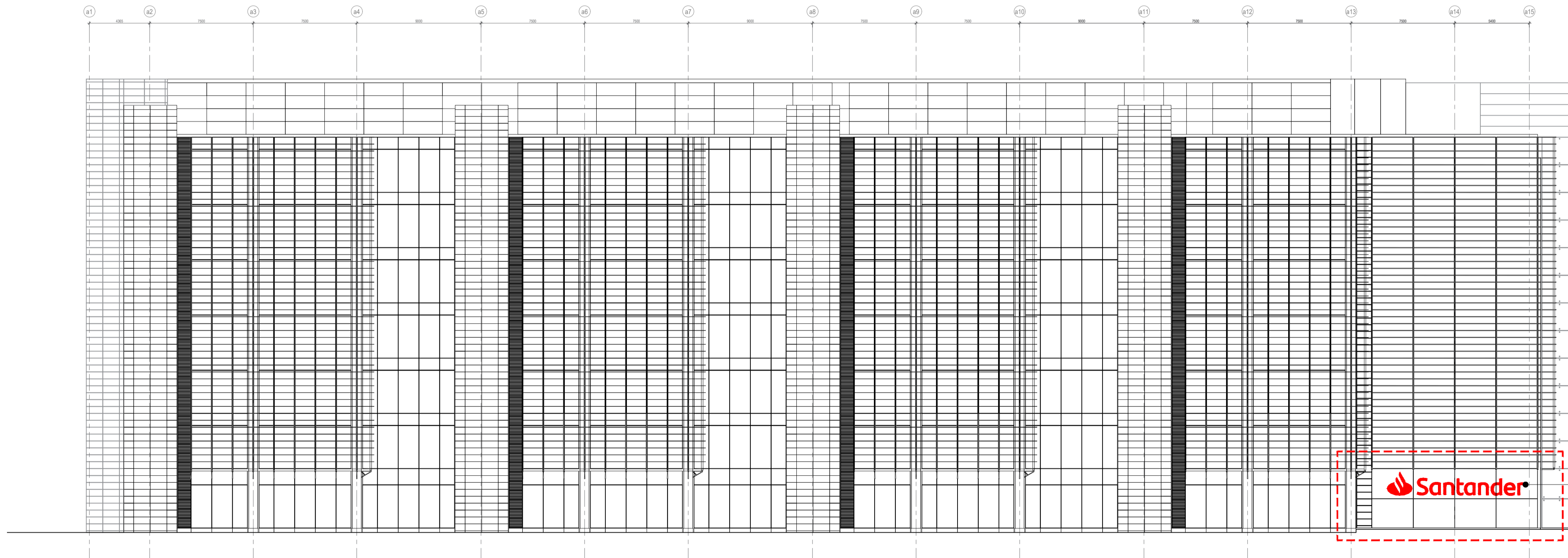
**REVISIONS**

REV	DATE	DESCRIPTION	CHECKED	DRAWN
-	15.03.2023	FOR INTERNAL REVIEW	JC	CP
A	24.03.2023	FOR INTERNAL REVIEW	JC	CP
A	17.04.2023	FOR INTERNAL REVIEW	JC	CP
A	18.04.2023	ISSUED FOR PLANNING APPLICATION	JC	CP



- Removal of existing signage
- Removal of existing revolving door
- Removal of section of curtain wall, including glazing and framework

SCALE 1:200  
EXISTING EAST ELEVATION



- Removal of existing signage

SCALE 1:200  
EXISTING SOUTH ELEVATION

PLANNING



client  
SANTANDER UK

project  
SANTANDER UK  
2 TRITON SQUARE  
REFURBISHMENT

drawing title  
EXISTING EAST & SOUTH  
ELEVATIONS

sheet size scale  
A1 1:200 @ A1

status  
PLANNING

drawing no. revision  
1981a-A-P002-01 A

**LOM architecture and design**  
The Glass House 5 Sclater Street London E1 6JY UK  
Phone +44(0)20 8444 2999 Email mail@lom-arp.com  
Web www.lom-architecture.com