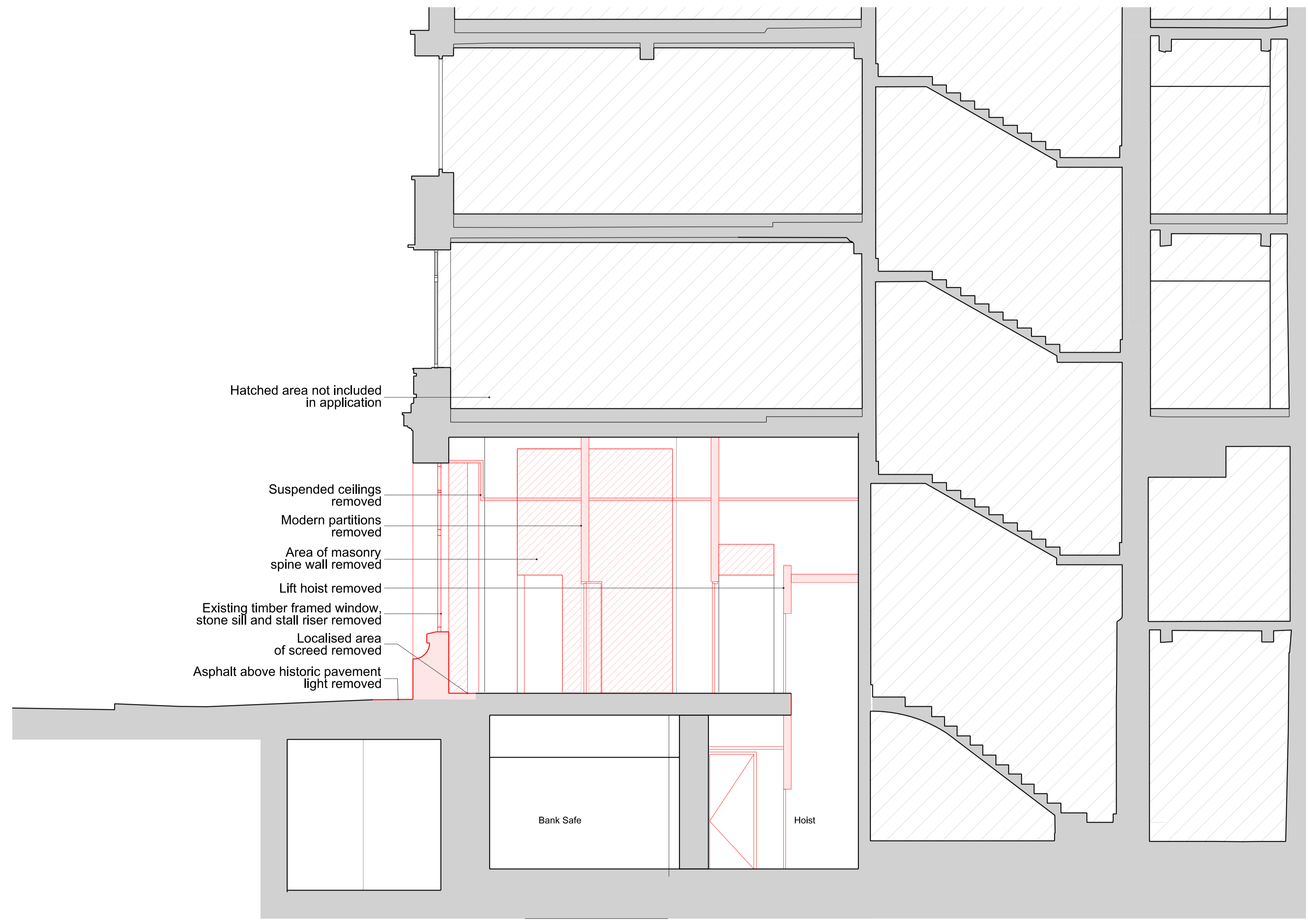


NOTES  
 DO NOT SCALE FROM THIS DRAWING.  
 CONTRACTOR TO CHECK ALL DIMENSIONS ON SITE.  
 ANY DISCREPANCIES TO BE REPORTED TO THE ARCHITECT IMMEDIATELY.  
 COPYRIGHT MICA ARCHITECTS LTD ©  
 Text

- Demolition
- Demolition walls (Section)
- ▨ Demolition walls (elevation)



- Hatched area not included in application
- Suspended ceilings removed
- Modern partitions removed
- Area of masonry spine wall removed
- Lift hoist removed
- Existing timber framed window, stone sill and stall riser removed
- Localised area of screed removed
- Asphalt above historic pavement light removed

REVISIONS			
REV	DATE	DESCRIPTION	REV
PL1	17.03.23	PLANNING ISSUE	
P1	NY1	PRELIMINARY ISSUE	

KEY PLAN

STATUS

PLANNING

**MICA**  
 123 Camden High Street London NW1 7JR  
 T: 020 7284 1727 F: 020 7267 7626  
 info@micaarchitects.com www.micaarchitects.com

**JOB**  
 NORFOLK HOUSE RETAIL UNIT  
 127-128 High Holborn  
 Holborn, London

**TITLE**  
 Existing - Demolition  
 Section AA

**DRG #** 741-MICA-NH-AA-DR-A-19130 **REV** PL1

CHECKED	GM	DRAWN	DRM	SCALE	1:50	SIZE	A1	REV/DATE	17.03.23
---------	----	-------	-----	-------	------	------	----	----------	----------