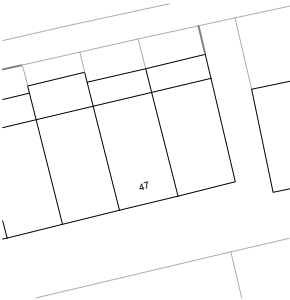


REVISIONS	
REV.	AMENDMENT



▽ ROOF FFL +13473

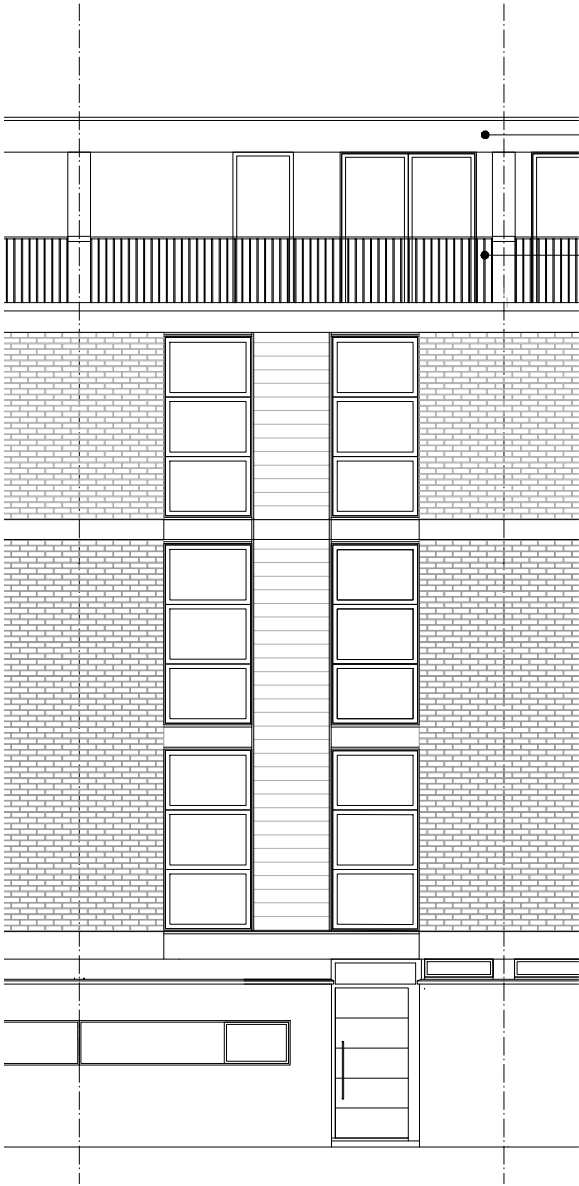
▽ 8F FFL +10984

▽ 6F FFL +8229

▽ 4F FFL +5461

▽ 2F FFL +2732

▽ GF FFL +/-000    ▽ EX FFL -116



(01)250.01 Front Elevation

rendered band painted in white to match existing  
▽ ROOF FFL +12244

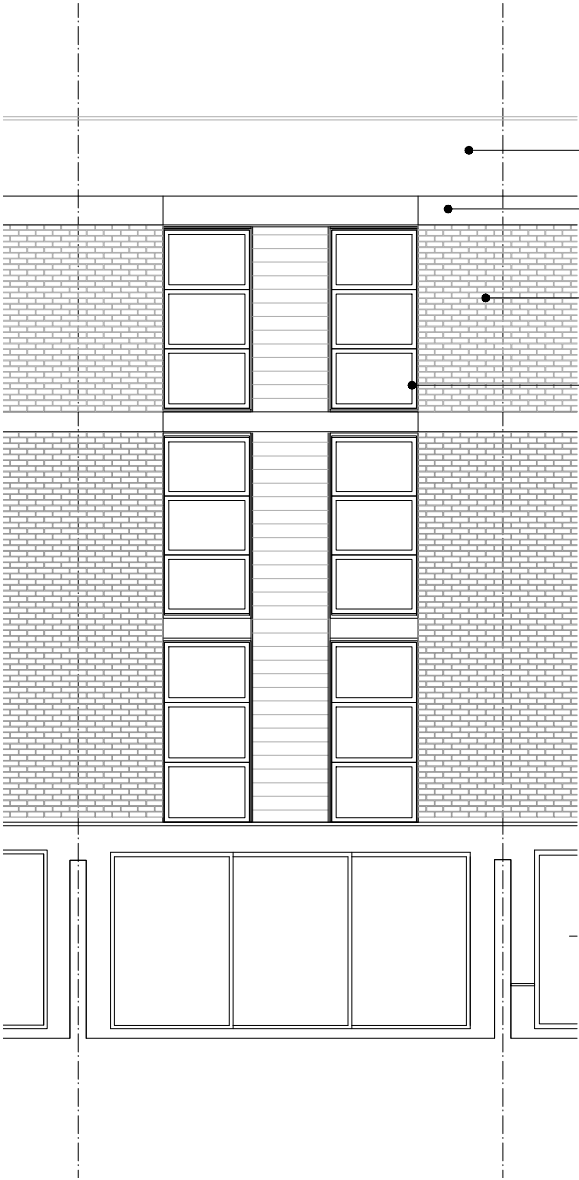
white metal railings

▽ 7F FFL +9639

▽ 5F FFL +6815

▽ 3F FFL +4097

▽ 1F FFL +1366



(01)250.01 Rear Elevation