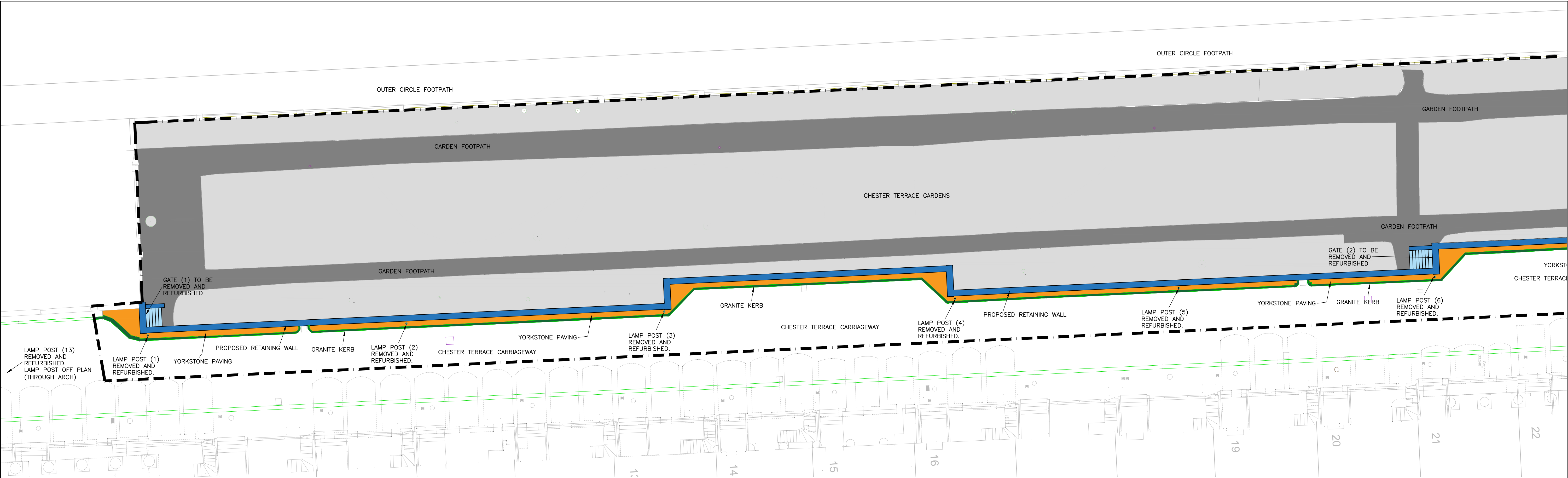
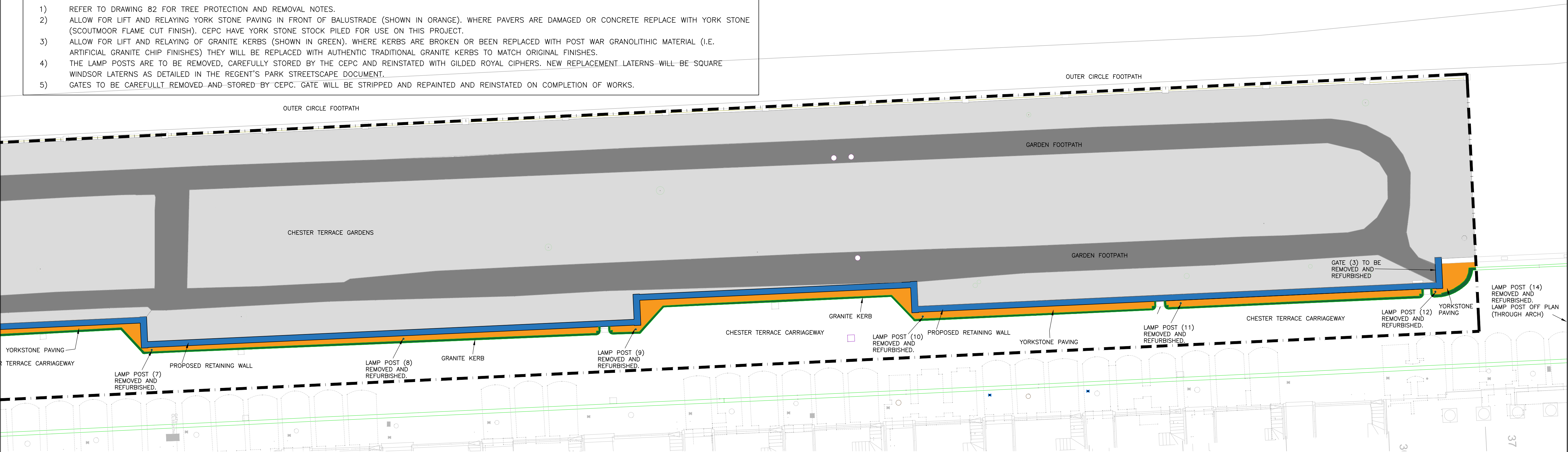


[illegible]



- NOTE:
- 1) REFER TO DRAWING 82 FOR TREE PROTECTION AND REMOVAL NOTES.
 - 2) ALLOW FOR LIFT AND RELAYING YORK STONE PAVING IN FRONT OF BALUSTRADE (SHOWN IN ORANGE). WHERE PAVERS ARE DAMAGED OR CONCRETE REPLACE WITH YORK STONE (SCOUTMOOR FLAME CUT FINISH). CEPC HAVE YORK STONE STOCK PILED FOR USE ON THIS PROJECT.
 - 3) ALLOW FOR LIFT AND RELAYING OF GRANITE KERBS (SHOWN IN GREEN). WHERE KERBS ARE BROKEN OR BEEN REPLACED WITH POST WAR GRANOLITHIC MATERIAL (I.E. ARTIFICIAL GRANITE CHIP FINISHES) THEY WILL BE REPLACED WITH AUTHENTIC TRADITIONAL GRANITE KERBS TO MATCH ORIGINAL FINISHES.
 - 4) THE LAMP POSTS ARE TO BE REMOVED, CAREFULLY STORED BY THE CEPC AND REINSTATED WITH GILDED ROYAL CIPHERS. NEW REPLACEMENT LATERNS WILL BE SQUARE WINDSOR LATERNS AS DETAILED IN THE REGENT'S PARK STREETSCAPE DOCUMENT.
 - 5) GATES TO BE CAREFULLY REMOVED AND STORED BY CEPC. GATE WILL BE STRIPPED AND REPAINTED AND REINSTATED ON COMPLETION OF WORKS.



Status **PLANNING**

No	Revision	By	Ckd	Psd	Dte
P1	ISSUED FOR PLANNING	JRH	DMC		06 04 23

PRINT IN COLOUR

- NOTES
- THIS DRAWING IS TO BE READ IN CONJUNCTION WITH ALL RELEVANT ARCHITECTS & ENGINEERS DRAWINGS, DETAILS AND SPECIFICATIONS.
 - CDM DETAILS REFERS TO THE CONSTRUCTION (DESIGN AND MANAGEMENT) REGULATIONS. THE READER MUST REFER TO METHOD STATEMENTS OR RISK ASSESSMENTS AS APPROPRIATE, WHICH IDENTIFY UNUSUAL AND ABNORMAL RISKS THAT A COMPETENT CONTRACTOR COULD NOT BE EXPECTED TO ANTICIPATE.

Hurst Peirce + Malcolm LLP
CONSULTING CIVIL & STRUCTURAL ENGINEERS

HPM

Celtic House
33 JOHN'S MEWS
HOLBORN
LONDON WC1N 2QL

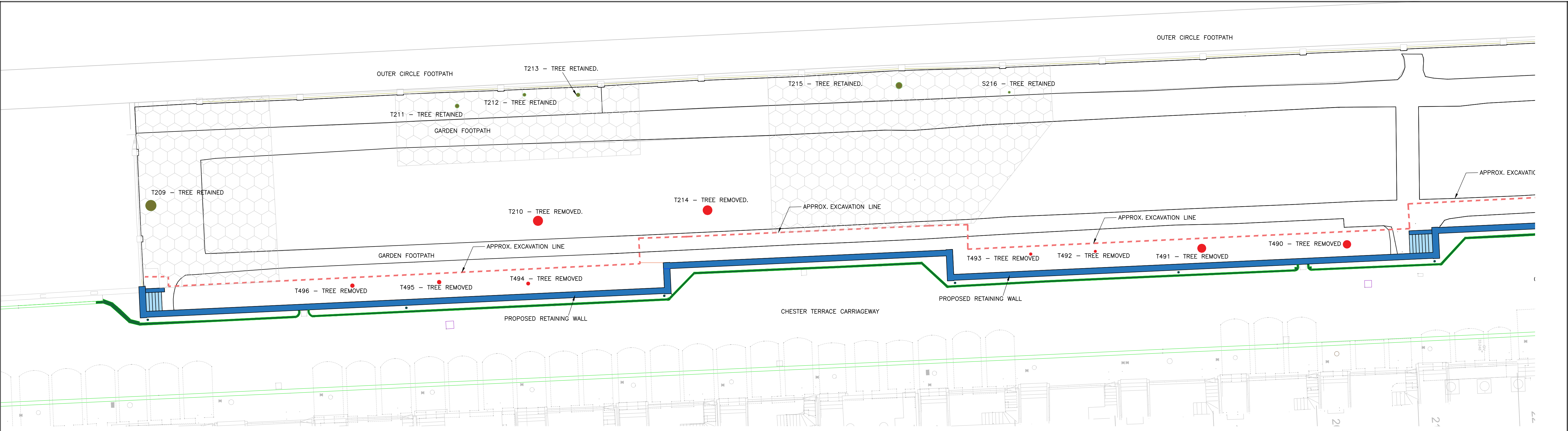
TEL: 020 7242 3593
FAX: 020 7405 5274

E-MAIL:
enquiries@hurstm.co.uk

WEB PAGE
www.hurstm.co.uk

ARCHITECT			
CDM DETAILS (Refer to Note 2)			ENG
Scale			
AT SHOWN AT A1			
Drawn DH	Checked JRH	Passed DMC	Date OCT 22

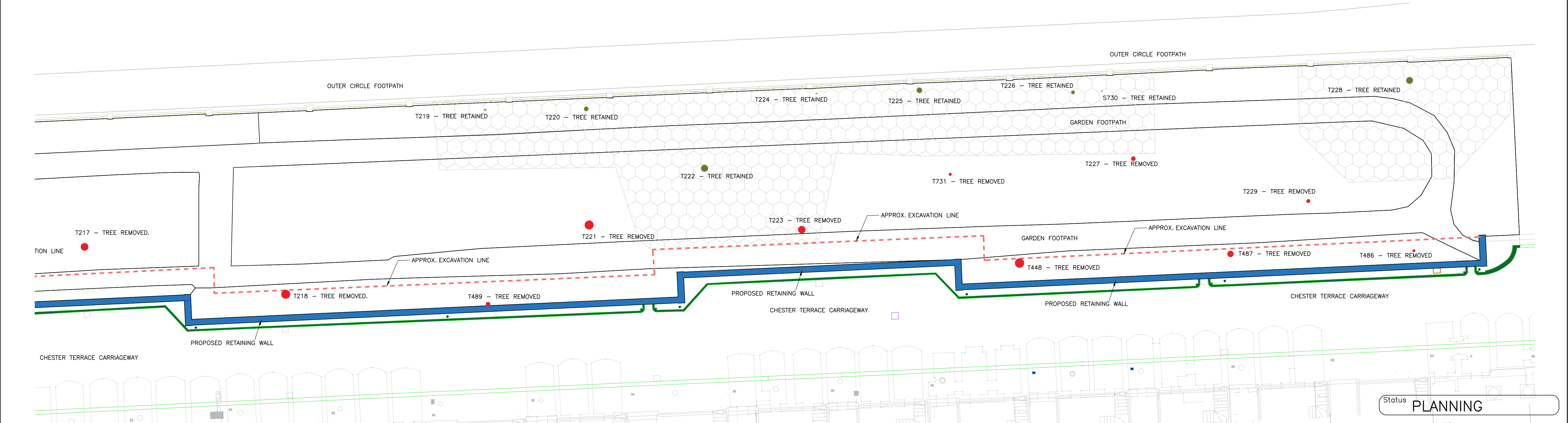
Project	CEPC CHESTER TERRACE BALUSTRADE		
Title	PROPOSED WORKS WORKS PLAN SHEET 2		
Drawing No.	24509-81	P1	



NOTE:

- 1) CONTRACTOR TO ALLOW FOR REMOVAL OF ALL TREES AS NOTED ON DRAWING. THESE WORKS SHOULD BE CONDUCTED IN ACCORDANCE WITH TMA ARBORICULTURE REPORT.
- 2) THE CROWNS OF RETAINED TREES CAN BE RAISED BUT THESE NEED TO BE AGREED WITH TMA AND THE CEPC ONCE THE METHODOLOGY/LOGISTICS OF THE WORKS HAS BEEN CO-ORDINATED BETWEEN THE CONTRACTOR AND CLIENT. CONTRACTOR TO MAKE ALLOWANCES FOR LIFTING TO SUIT THEIR METHODOLOGY.
- 3) CONTRACTOR TO ALLOW FOR NEW TREE PLANTING AS PER TLG PROPOSED PLANTING DRAWINGS.
- 4) DRAWING BASED ON TMA REPORT – REFER TO THEIR REPORT FOR MORE DETAIL.

ROOT PROTECTION:
DURING WORKS, APPROACH OF TREE PROTECTION TO BE AGREED WITH ARBORICULTURIST ONCE CONTRACTORS METHODOLOGY AND LOGISTICS HAVE BEEN CONFIRMED. NOMINALLY ALLOW FOR 100mm THICK WOODCHIP LAYER UPON A GEOTEXTILE MEMBRANE OVER WHICH HEAVY DUTY GROUND MATS WILL BE LAID.



No	Revision	By	Ckd	Psd	Dte
P1	ISSUED FOR PLANNING	JRH	DMC		06 04 23

PRINT IN COLOUR

NOTES

1. THIS DRAWING IS TO BE READ IN CONJUNCTION WITH ALL RELEVANT ARCHITECTS & ENGINEERS DRAWINGS, DETAILS AND SPECIFICATIONS.
2. CDM DETAILS REFERS TO THE CONSTRUCTION (DESIGN AND MANAGEMENT) REGULATIONS. THE READER MUST REFER TO METHOD STATEMENTS OR RISK ASSESSMENTS AS APPROPRIATE, WHICH IDENTIFY UNUSUAL AND ABNORMAL RISKS THAT A COMPETENT CONTRACTOR COULD NOT BE EXPECTED TO ANTICIPATE.

Hurst Peirce + Malcolm LLP
CONSULTING CIVIL & STRUCTURAL ENGINEERS

HPM

Celtic House
33 JOHN'S MEWS
HOLBORN
LONDON WC1N 2QL

©

TEL: 020 7242 3593
FAX: 020 7405 5274

E-MAIL:
enquiries@hurstpm.co.uk

WEB PAGE
www.hurstpm.co.uk

ARCHITECT			
CDM DETAILS (Refer to Note 2)			ENG
Scale AT SHOWN AT A1			
Drawn DH	Checked JRH	Passed DMC	Date OCT 22

Project	CEPC CHESTER TERRACE BALUSTRADE		
Title	TREE PROTECTION & REMOVAL PLAN		
Drawing No.	24509-82	P1	