

HVAC FOR DESIGN INTENT ONLY, CONTACT PROJECT MANAGER IF CHANGED.

PAINT ALL HVAC DUCTS & HVCA DIFFUSERS THE SAME COLOUR AS CEILING OR SOFFIT, TYPICAL THROUGHOUT RETAIL PORTION OF STORE.

CONDENSATE PIPEWORK TO BE INSTALLED IN BRAIDED PVC TUBE C/W CONDENSATE PUMPS.

CONDENSATE FROM UNITS TO RUN BACK TO LOCAL WASTE, COMPLETE WITH TRAP.

THE CONTRACTOR IS TO EMPLOY A COMMISSIONING ENGINEER FORM THE DESIGN STAGE TO A YEAR AFTER COMPLETION OF THE PROJECT. DUTIES TO INCLUDE COMMENTING ON THE HVAC DESIGN, OVERSEE THE COMMISSIONING AND HANDOVER, OVERSEE AND COMMENT OF THE SEASONAL COMMISSIOING POST HANDOVER.

THE DUCTWORK DESIGN WILL MEET WITH THE REQUIRMENTS OF DW144.

- VOLUME FLOW RATE FROM EACH GRILLE TO BE MEASURED AND CONFIRMED
- COOLING AND HEATING TEMPERATURE TO BE CONFIRMED INCLUDING OUTSIDE AIR TEMPERATURE, ROOM TEMPERATURE AND GRILLE/DIFFUSER TEMPERATURE
- TEMPERATURES TO BE SET TO 22°C
- ALL EXTRACT FANS TO OPERATE ON A TIMECLOCK.
- ALL MECHANICAL EQUIPMENT THAT IS FIXED TO THE SOFFIT SHALL HAVE ANTI-VIBRATION MOUNTS AND FIXINGS

ZONING CONTROLS

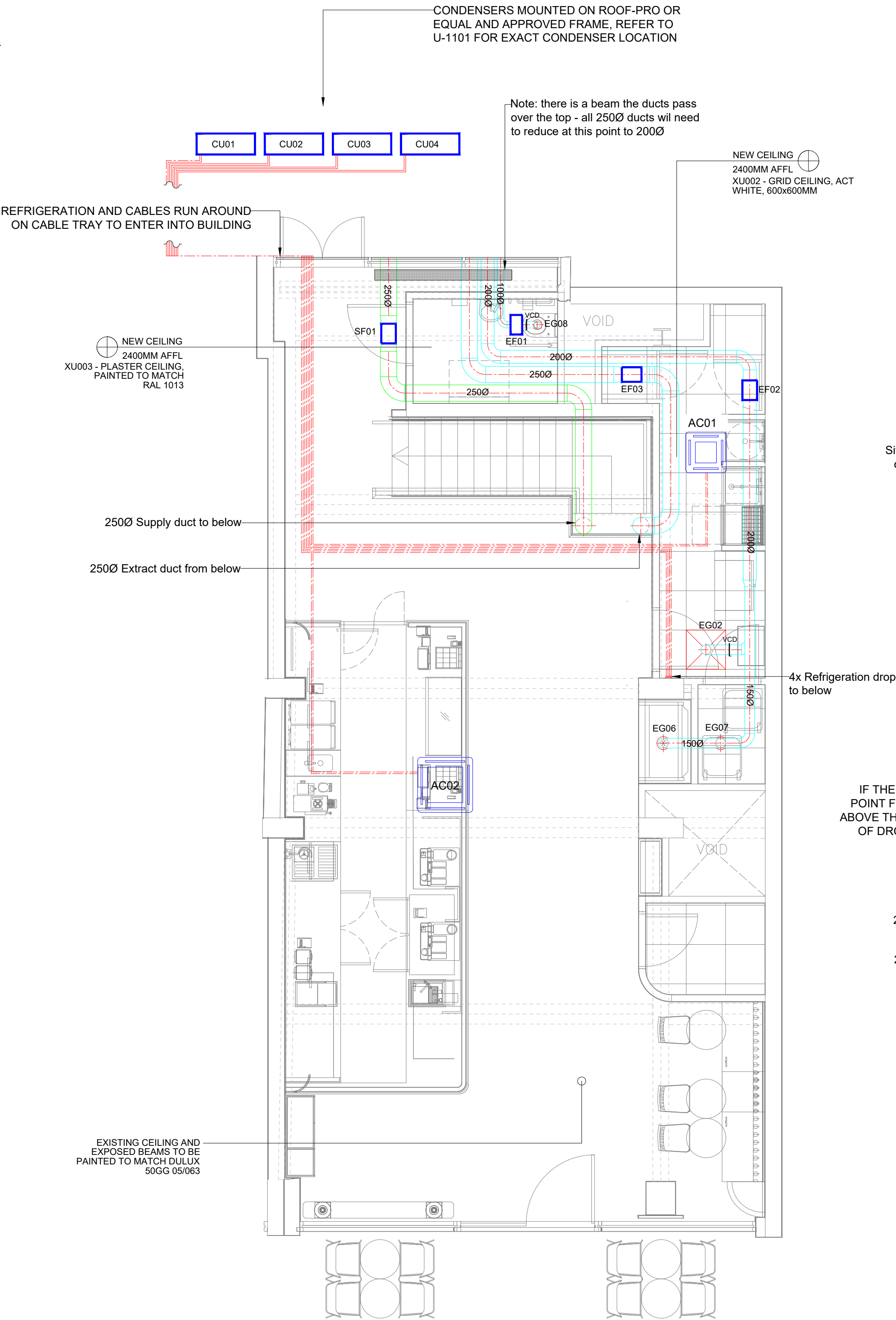
- TIME SWITCH TO CONTROL ALL HEAT PUMPS TO PROVIDED WITH THE SELECTION OF THE RBCAMS41E 7-DAY CONTROLLER
- ALL CONTROLLERS TO BE MOUNTED WITHIN MANAGER'S AREA
- ALL OF THE EQUIPMENT IS NOT CONTROLLED THROUGH THE ALARM AND THE HVAC CONTRACTOR SHALL ENSURE ALL EQUIPMENT HAS A 7-DAY CONTROLLER.

PLANNING CONDITIONS

- AUTOMATIC TME CLOCKS SHAL BE FITTED TO THE EQUIPMENT/MACHINERY HEREBY APPROVED, PRIOR TO COMMENCEMENT OF THE USE OF THE UNITS, TO ENSURE THAT THE PLANT/EQUIPMENT DOES NOT OPERATE OUTSIDE THE HOURS OF 07.00HRS AND 19.00HRS. THE TIMER EQUIPMENT SHALL THEREAFTER BE PREMANENTLY RETAINED AND MAINTAINED IN ACCORDANCE WITH THE MANUFACTURES RECOMMENDATIONS.
- NOISE LEVELS AT POINT 1 METRE EXTERNAL TO SENSITIVE FACADES SHALL BE AT LEAST 5DB(A) LESS THAN THE EXISTING BACKGROUND MEASUREMENT (LA90), EXPRESSED IN THE 5DB(A) WHEN ALL PLANT/EQUIPMENT (OR ANY PART OF IT) IS IN OPERATION UNLESS THE PLANT/EQUIPMENT HEREBY PERMITTED WILL HAVE A NOISE THAT HAS A DISTINGUISHABLE, DISCREET CONTINUOUS NOTE (BANG, CLICKS, CLATTERS, THUMPS), THEN THE NOISE LEVELS FROM THAT PIECE OF PLANT/EQUIPMENT AT ANY SENSITIVE FACADE SHALL BE AT LEAST 10DB(A) BELOW THE LA90, EXPRESSED IN THE DB(A)
- BEFORE THE USE COMMENCES, THE EXTRACT/VENTILATING SYSTEM/PLANT SHALL BE PROVIDED WITH ACOUSTIC ISOLATION, SOUND ATTENUATION AND ANTI-VIBRATION MEASURES IN ACCORDANCE WITH THE MANUFACTURERS RECOMMENDATIONS.

FAN SELECTION (MANROSE)			
UNIT REF	MANUFACTURER REFERENCE	CAPACITY l/s	ELECTRICAL DATA
EF01	MF100	20	25W 1PH
EF02	MF200	180	120W 1PH
EF03	MF200	290	120W 1PH
SF01	MF250	240	120W 1PH

SUPPLY GRILLE SELECTION - All FOH are sprayed to match colour of ceiling - RAL AS INDICATED PER AREA					
GRILLE REF	GRILLE TYPE	O/A GRILLE SIZE	DUCT CONN SIZE	VOLUME L/S	VCD
SG01	DG4	600 x 600	150Ø	50	OBD IN DUCT
SG02	CV- 425x125-DO-RAL	425 x 125	200Ø	95	ON GRILLE
SG03	CV- 425x125-DO-RAL	425 x 125	200Ø	95	ON GRILLE



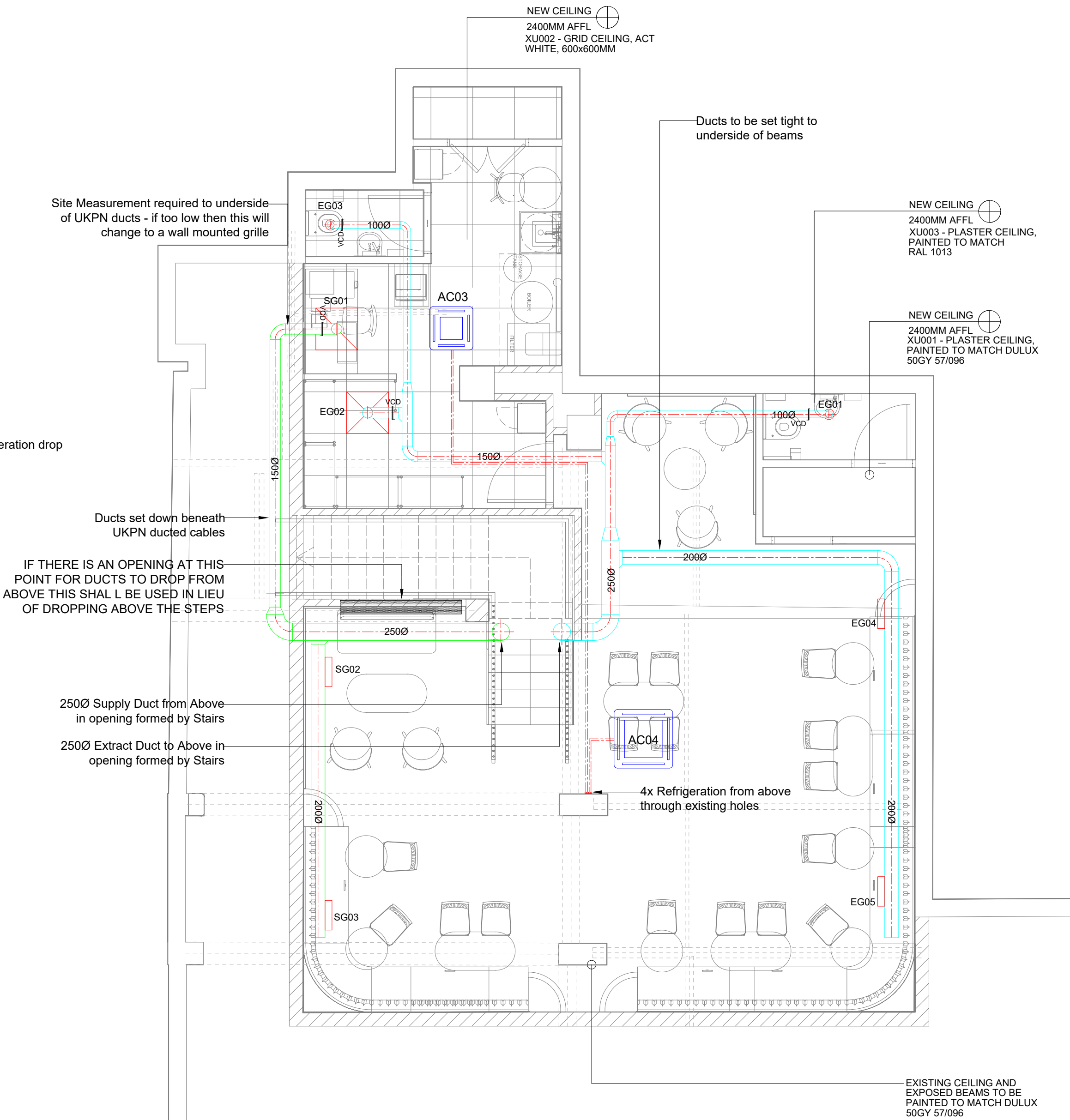
1 GROUND FLOOR - HVAC DESIGN PLAN
Scale: 1 : 50

TOSHIBA HEAT PUMP SELECTION - FASCIA FINISHED TO RAL COLOUR OF CEILING FOH

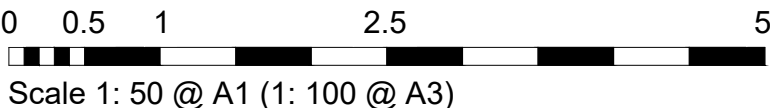
UNIT REF	MANUFACTURER REFERENCE INDOOR/OUTDOOR	CAPACITY (TOTAL)	ELECTRICAL SUPPLY	SIZE OF CONDENSER & WEIGHT	SOUND PRESSURE LEVELS
AC01 / CU01	RAV-HM561MUT-E / RAV-GM561ATP-E	4.8kW	1 PHASE RC 7.93A	550x780x290 44kg	48dB(A)
AC02 / CU02	RAV-HM1401UTP-E / RAV-GM1401ATP-E	12.1kW	1 PHASE RC 20.75A	890x900x320 68kg	57dB(A)
AC03 / CU03	RAV-HM561MUT-E / RAV-GM561ATP-E	4.8kW	1 PHASE RC 7.93A	550x780x290 44kg	48dB(A)
AC04 / CU04	RAV-HM1401UTP-E / RAV-GM1401ATP-E	12.1kW	1 PHASE RC 20.75A	890x900x320 68kg	57dB(A)

EXTRACT GRILLE SELECTION - All FOH are sprayed to match colour of ceiling - RAL AS INDICATED PER AREA

GRILLE REF	GRILLE TYPE	O/A GRILLE SIZE	DUCT CONN SIZE	VOLUME L/S	VCD
EG01	AIR VALVE GC	150Ø	100Ø	20	OBD IN DUCT
EG02	GECA-RC	600 x 600	150Ø	80	OBD IN DUCT
EG03	AIR VALVE GC	150Ø	100Ø	20	OBD IN DUCT
EG04	CV- 425x125-DO-RAL	425 x 125	ON DUCT	95	ON GRILLE
EG05	CV- 425x125-DO-RAL	425 x 125	ON DUCT	95	ON GRILLE
EG06	AIR VALVE GC	150Ø	100Ø	50	OBD IN DUCT
EG07	AIR VALVE GC	150Ø	100Ø	50	OBD IN DUCT
EG08	AIR VALVE GC	150Ø	100Ø	20	OBD IN DUCT
EG09	GECA-RC	600 x 600	150Ø	80	OBD IN DUCT
EG10	GECA-RC	600 x 600	150Ø	80	OBD IN DUCT



2 BASEMENT - HVAC DESIGN PLAN
Scale: 1 : 50



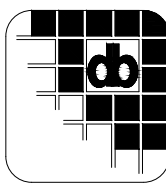
Starbucks Coffee Company

Building 4, Chiswick Park
566 Chiswick High Road
London, W4 5YE

These Drawings and Specifications are confidential and shall remain the sole property of Starbucks Corporation, which is the owner of the copyright in this work. They shall not be reproduced (in whole or in part), shared with third parties or used in any manner on other projects or extensions to this project without the prior written consent of Starbucks Corporation. These drawings and specifications are intended to express Design Intent for a prototypical Starbucks store (which is subject to change at anytime) and do not reflect actual site conditions. Neither party shall have any obligation nor liability to the other (except as stated above) until a written agreement is fully executed by both parties.

Engineer of Record

Unit J2, The Granary,
Bridge Farm,
Reading Road, Arborfield,
Berkshire, RG2 9HT
T:01189 773011
E:admin@designbrook.co.uk



Revision Schedule

Rev	Date	By	Description

Project Name:
HIGH HOLBORN

Project Address:
**262, High Holborn
London
WC1V 7EZ**

Store #: 79198

Project #: 6665

Concept:

Palette:

Issue Date: 11.04.23

Design Manager:

Project Designer:

Production Designer:

Checked by:

Sheet Title:

HVAC Design Plan

Scale:

1:50

Sheet Number:

79198-M-1101

CONSTRUCTION DRAWING SET