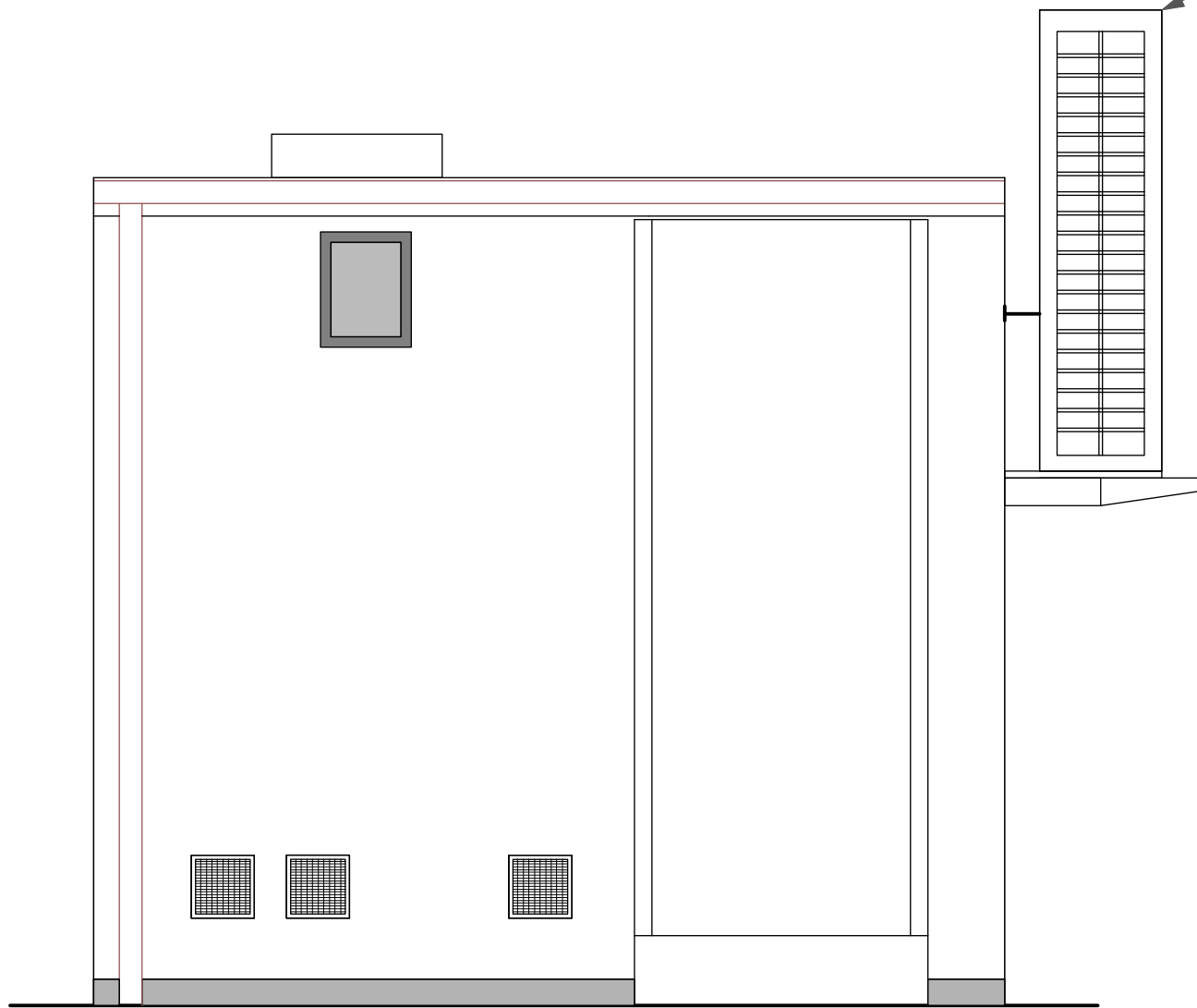
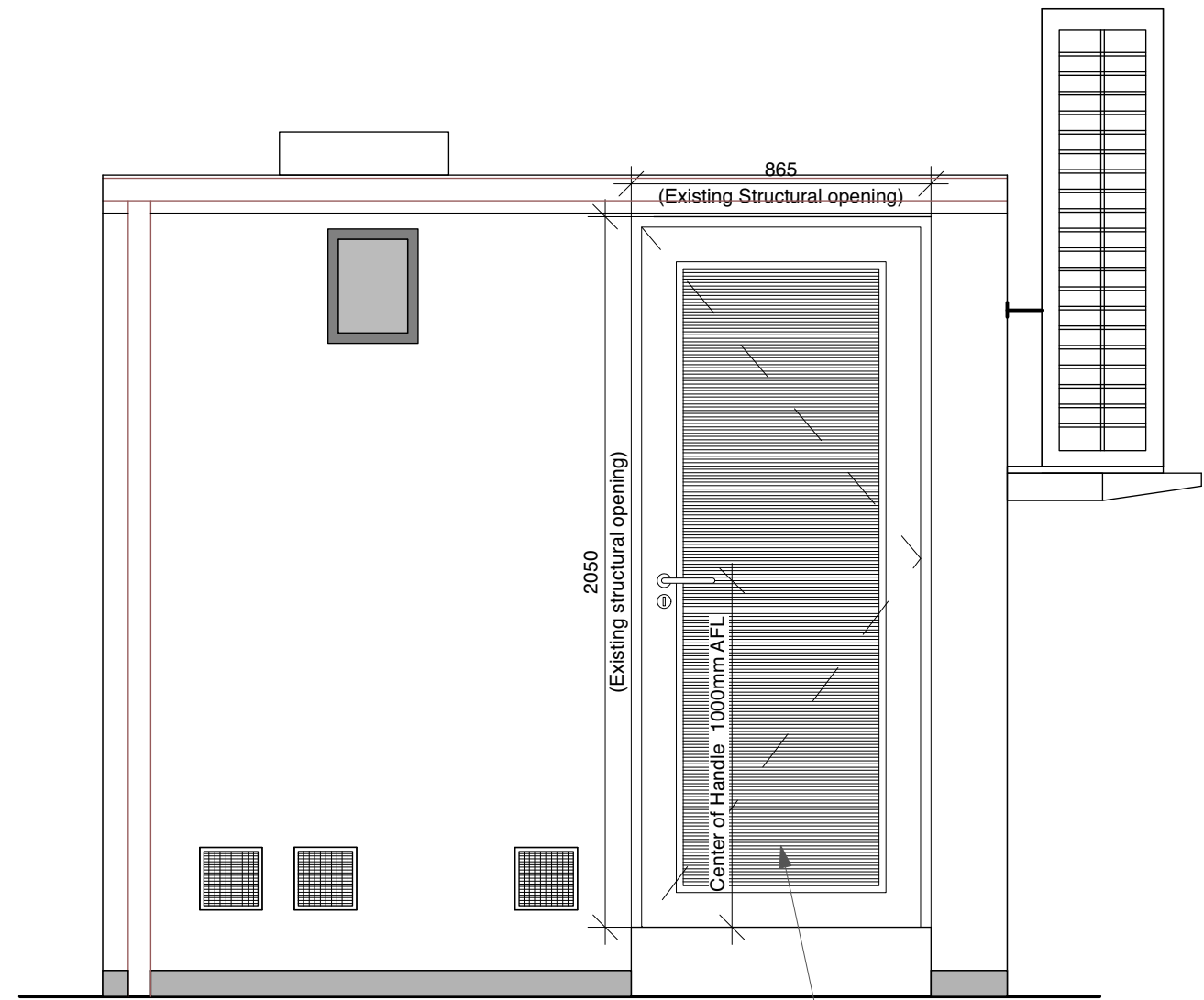


Existing wall mounted heat pump and condenser unit



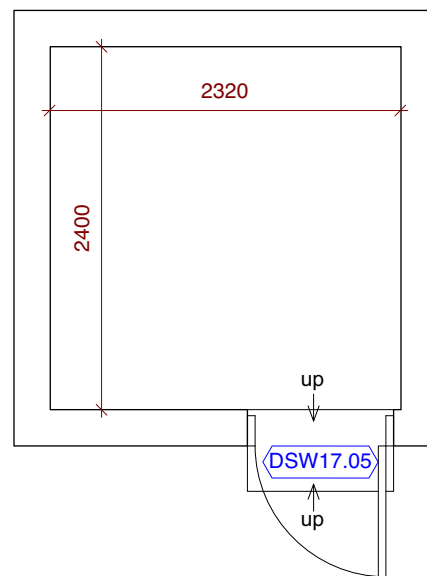
EXISTING ELEVATION



PROPOSED ELEVATION

Proposed new aluminium louvre door, see detail drawing 220592(SW17)-5200

FLOOR PLAN



**NOTES**

- Refurbishment of the chemical store - 2320mm x 2400mm with height 2250mm (at lowest point) building.
- New lighting, ventilation and internal decoration including epoxy floor paint.
- Replaced existing door (865mmx2050mm) for Aluminium louvre door (see door elevation dwg no. 220592(SW17)-5200).

**EXISTING AND PROPOSED ELEVATIONS SW17 CHEMICAL STORE**



Scale 1:20 @ A3



Chartered Architects  
Chartered Building Surveyors  
Interior Designers  
CDM Services

Suite 3, Sandford House,  
1b Claremont Road,  
Teddington, TW11 8DH  
+44 (0)20 8943 5300  
www.kendallkingscott.co.uk

Project  
Life and Medical Sciences Small Works

Client  
University College London

Scale 1:20  
Paper Size ISO A3  
Filename 220592-SW17-Chemical Store.vwx

Project P1 10/03/23 AC GC Issued to Planning  
Rev Date By Ap Note

Drawing Title  
Existing and Proposed Elevations

Project Number 220592(SW17)-1303  
Drawing Number  
Revision P1

Date 21/02/2023  
Drawn JI  
Checked GC  
Purpose/Status PLANNING

Only to be used on the site for which designed. The electronic transmission of designs/information contained in this drawing is carried out entirely at the User's risk and Kendall Kingscott Ltd. will have no liability for any errors or inaccuracies arising therefrom. The production of amended or updated information from the said designs/information by the User is entirely the responsibility of the User and Kendall Kingscott Ltd. shall have no responsibility in respect thereof whatsoever.