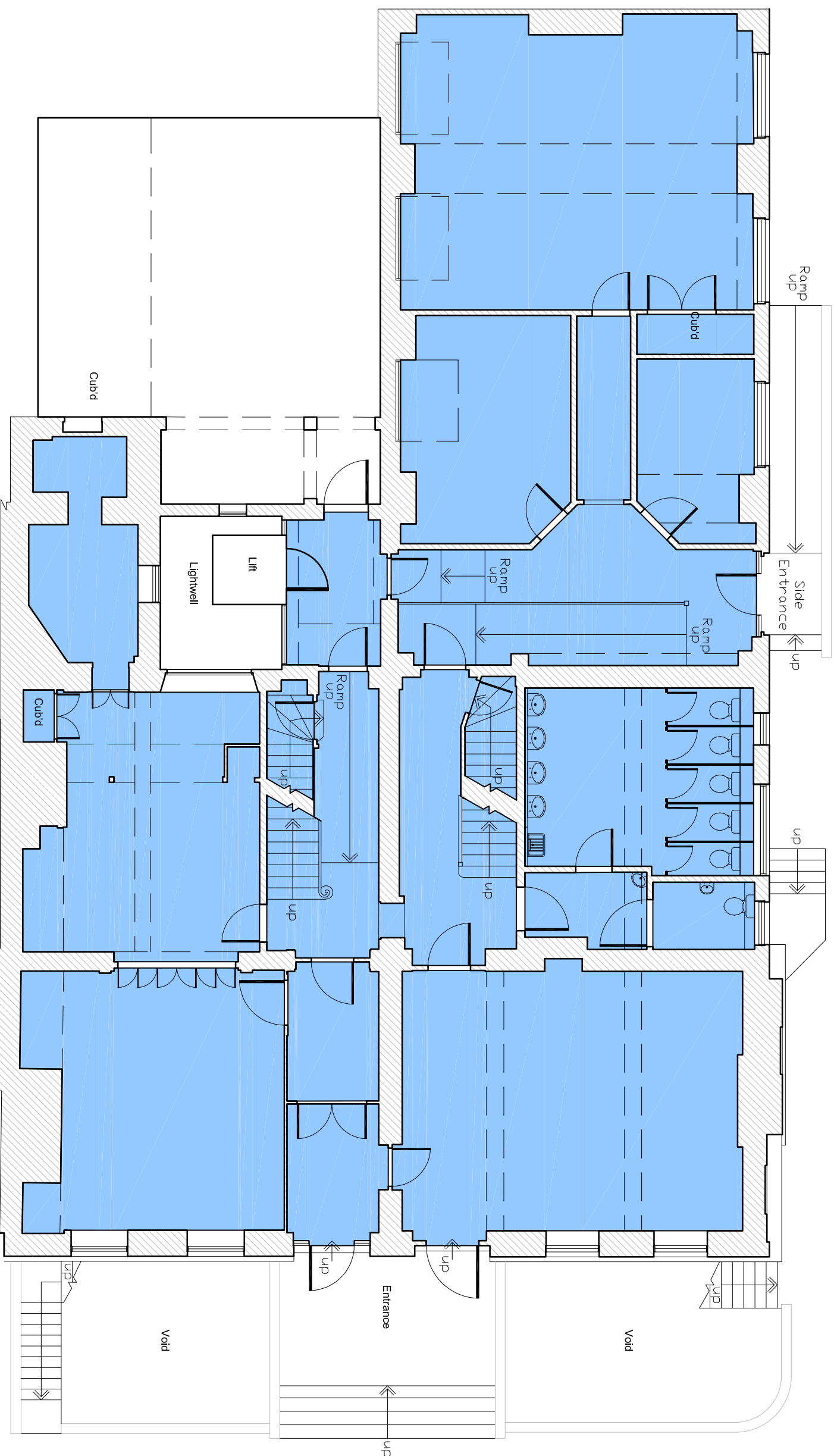
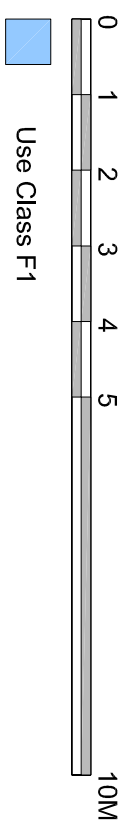


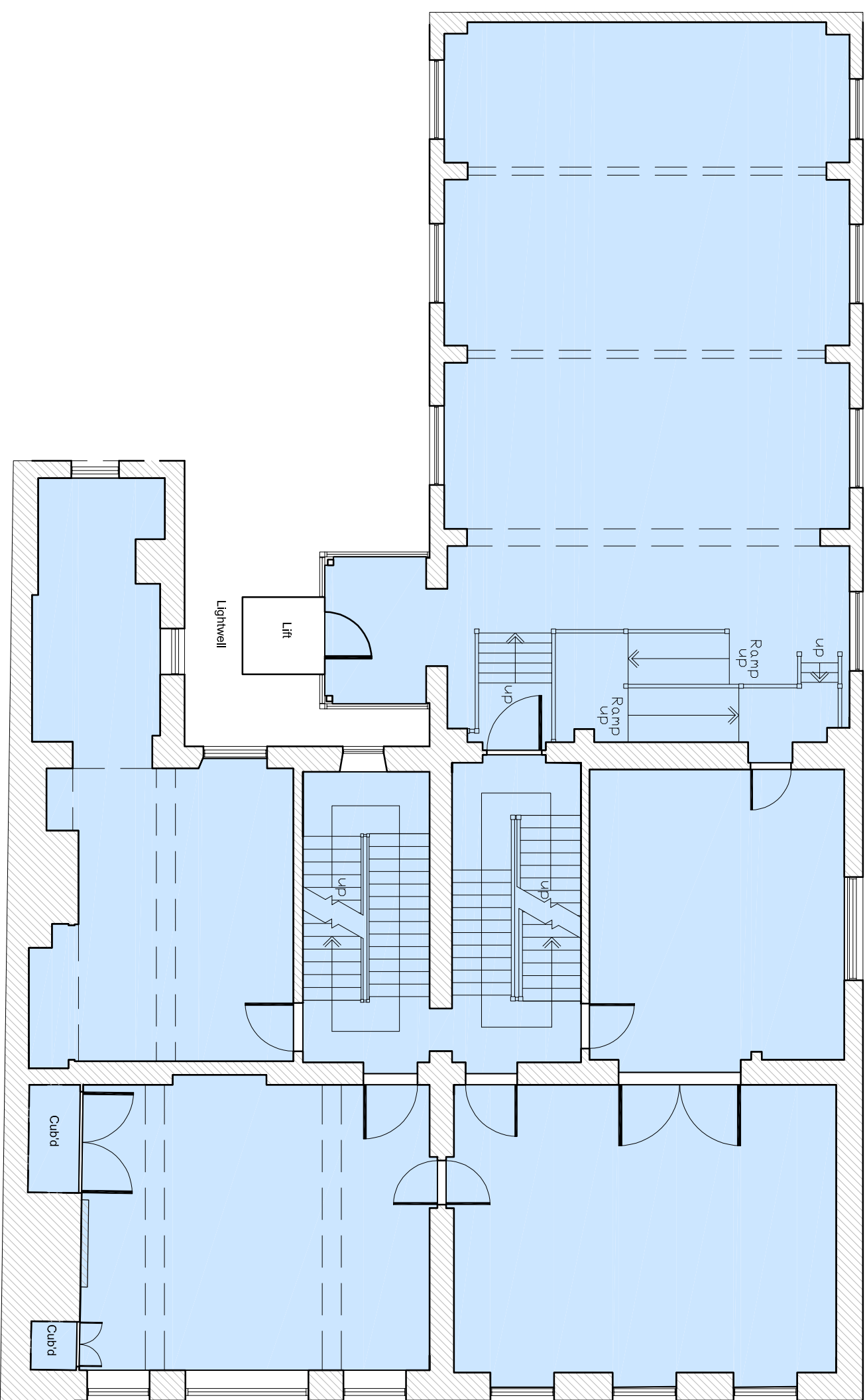
Basement



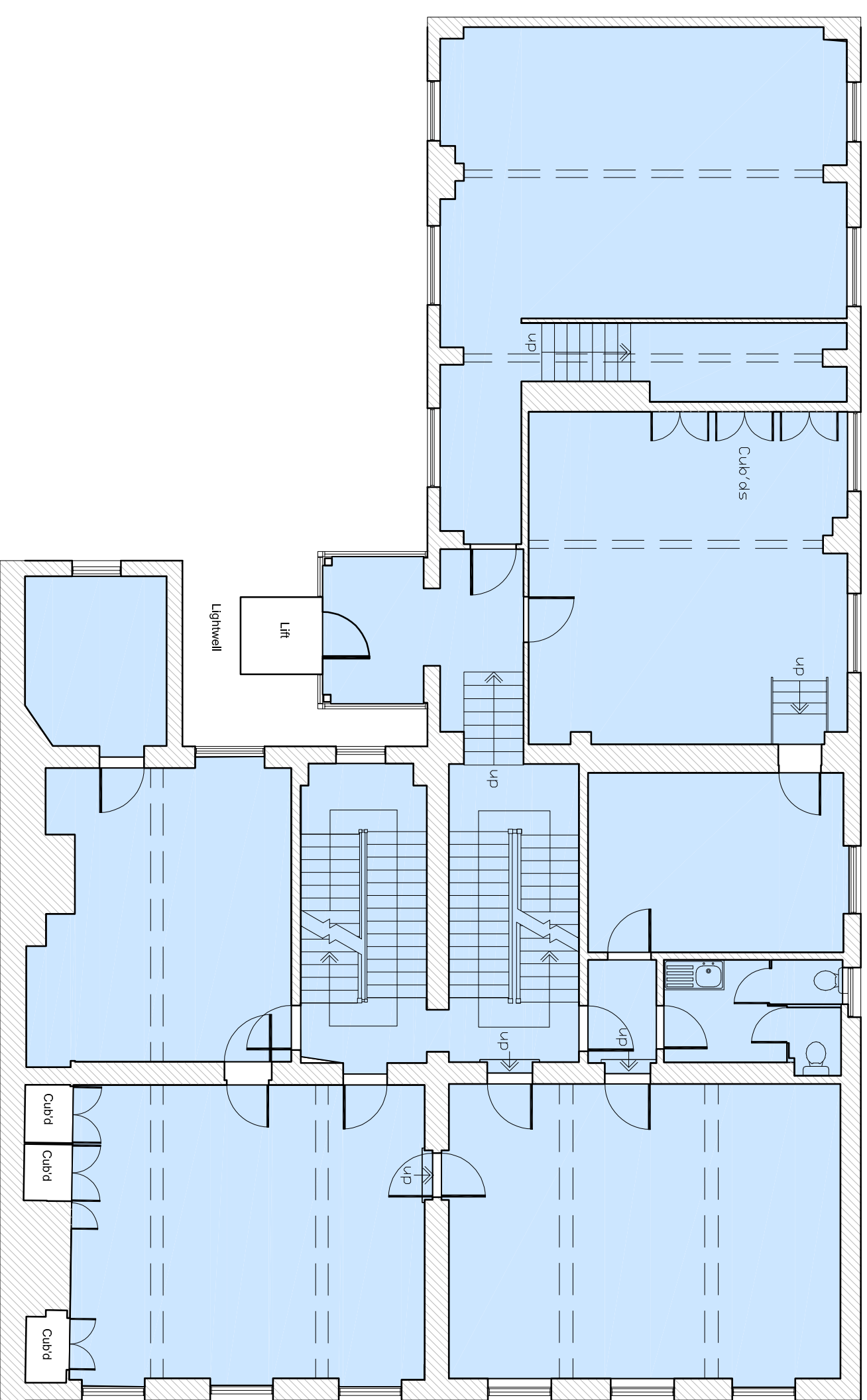
Ground Floor



| | | | | | | | | | |
|--|-------------|-----------|-------|-------|-----|--------------------------|------------|-------|------|
| <div>Frederick Gibberd Partnership</div> <div>31 Charlotte Road London, EC2A 3JG +44(0)20 7739 3400 studio@gibberd.com www.gibberd.com</div> | | | | | | | | | |
| REV | DESCRIPTION | DATE | DRAWN | AUTH | REV | DESCRIPTION | DATE | DRAWN | AUTH |
| --- | --- | --- | --- | --- | --- | --- | --- | --- | --- |
| © Copyright of the information is vested in Frederick Gibberd Partnership | | | | | | | | | |
| <div><div><div>gibberd</div><div>architecture interior conservation</div></div></div> | | | | | | | | | |
| Client: Royal Female School of Art Foundation | | | | | | Internal Project No.: -- | | | |
| Project: 42-43 Queen Square - Change of Use | | | | | | Suitability: -- | | | |
| Title: Existing Basement and Ground Floor Plans | | | | | | | | | |
| Series: General Arrangement | | | | | | Scale (A1): 1/100 | | | |
| Drawing No: | 2117 | Design: | FGP | Zone: | XX | Level: | XX | Type: | PL |
| Drawn: | IF | Reviewed: | IF | Auth: | IF | Date: | April 2023 | Rate: | A |
| | | | | | | Number: | 0020 | Rev: | -- |



~~⊗~~ First Floor



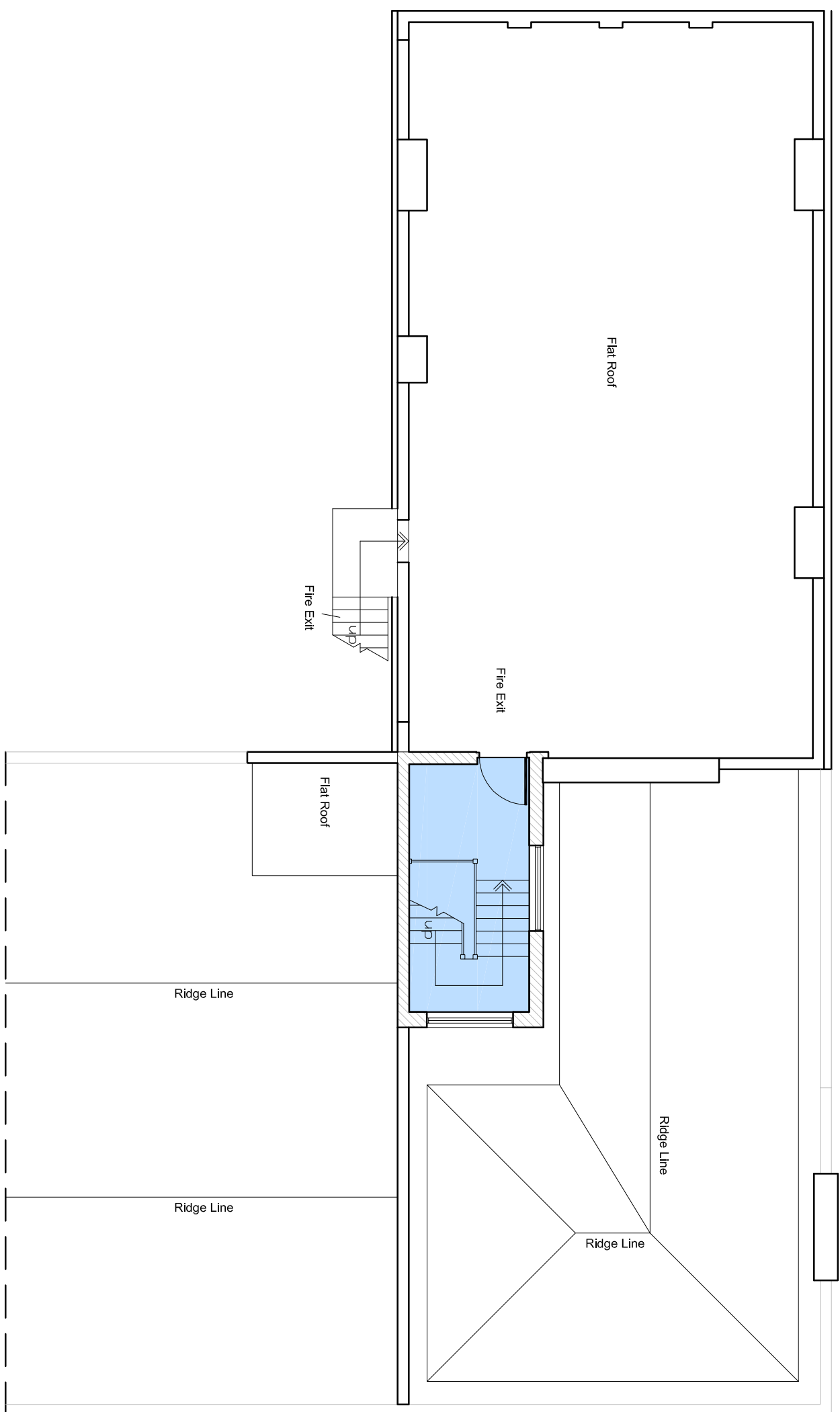
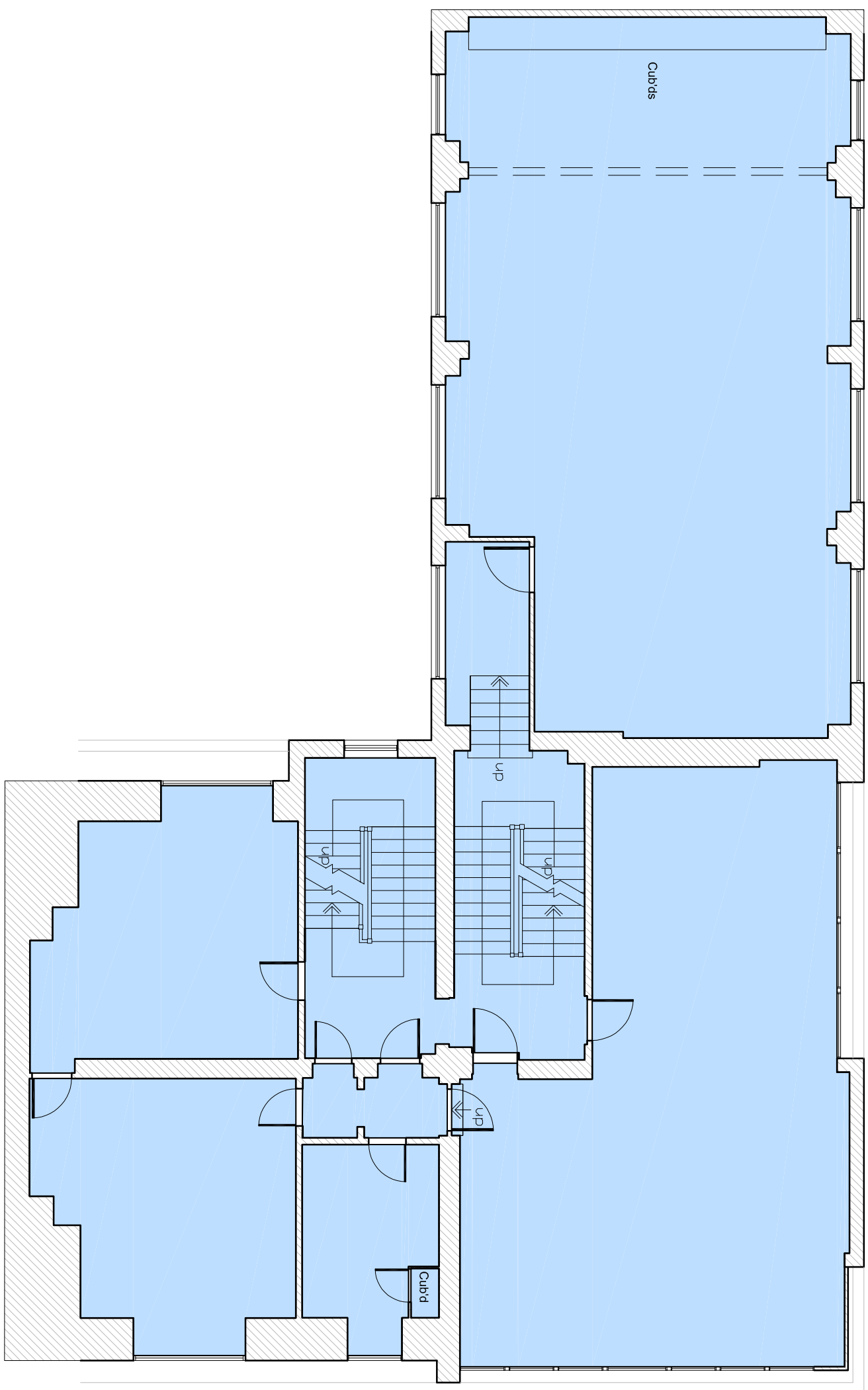
Second Floor

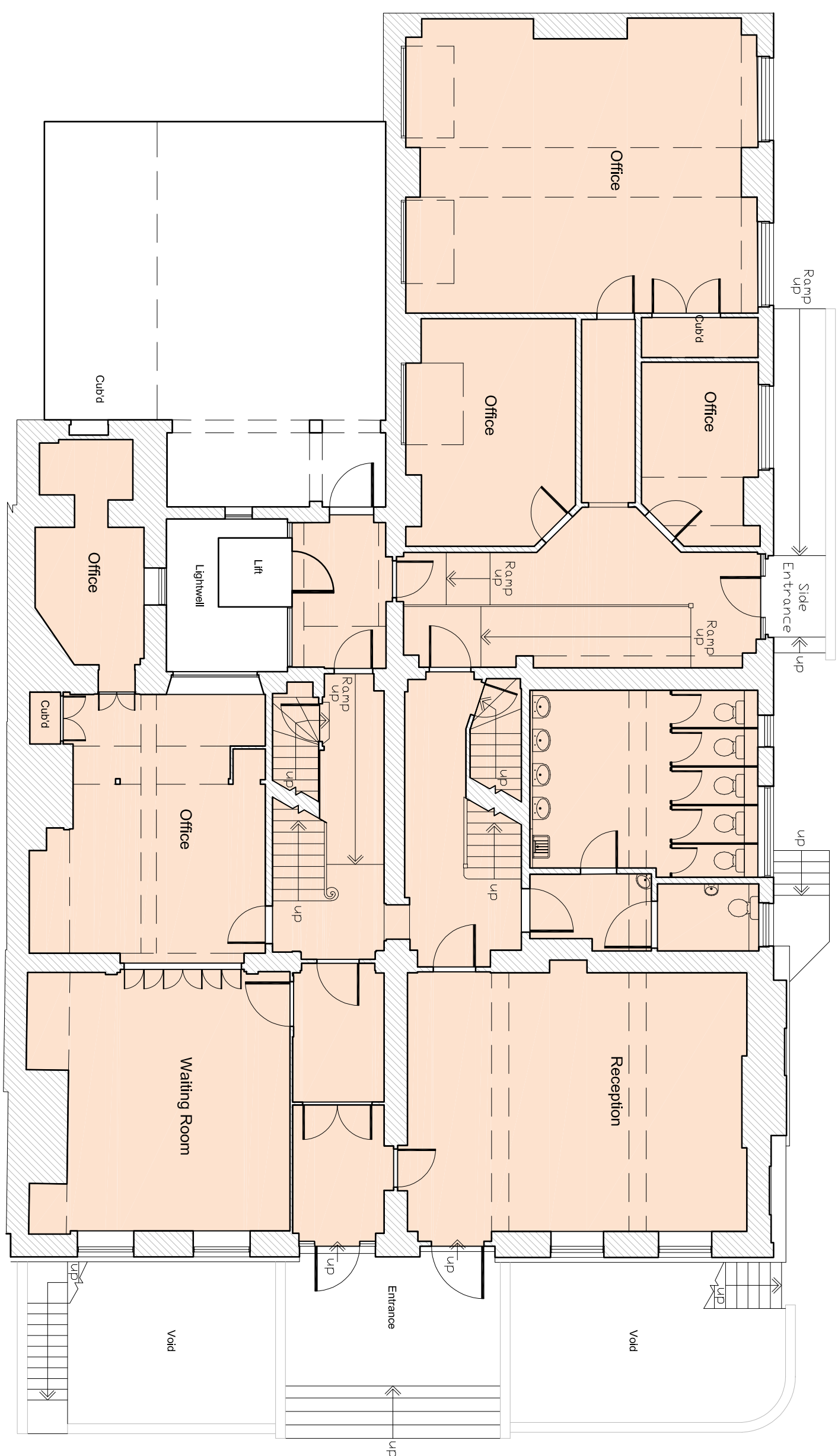
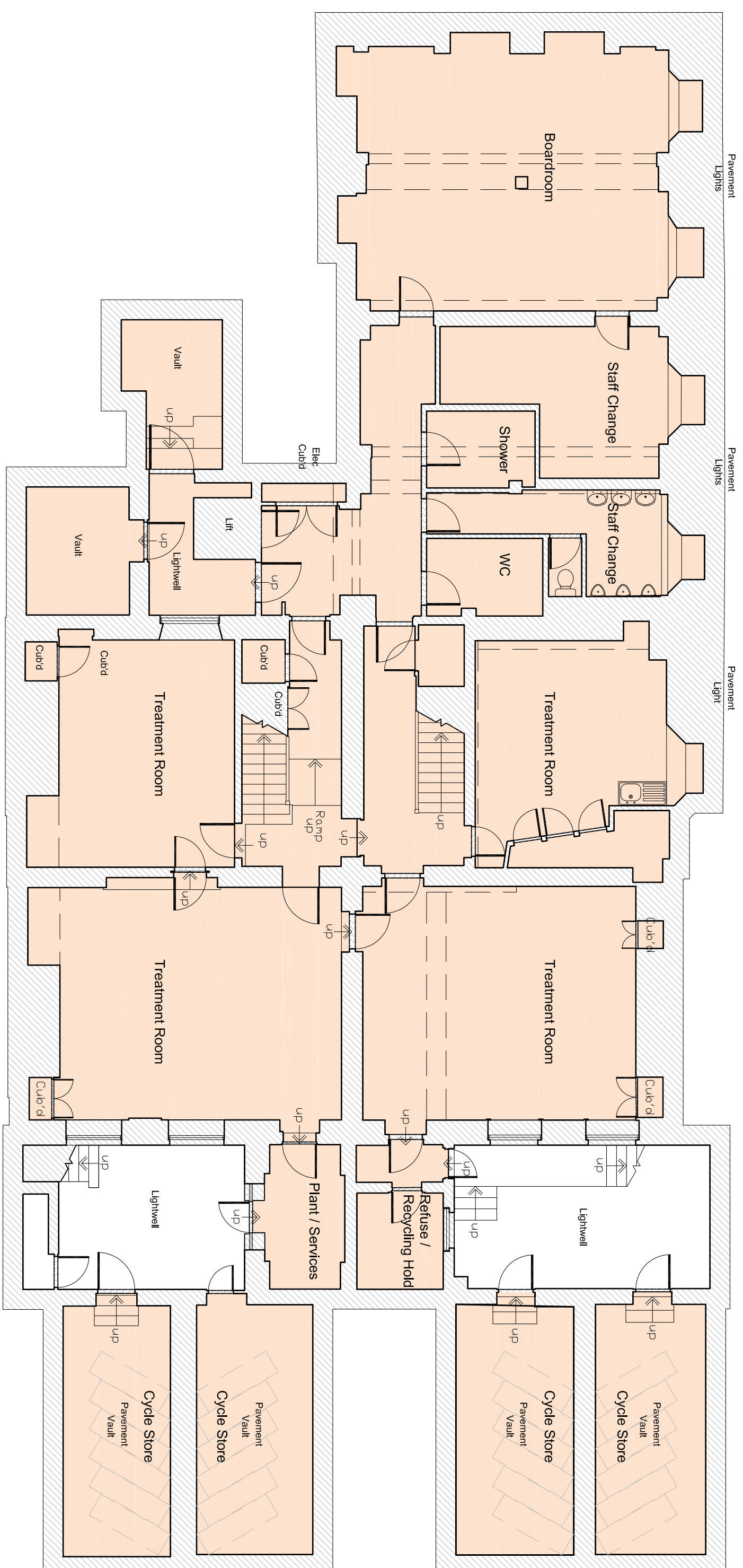
0 1 2 3 4 5






10M

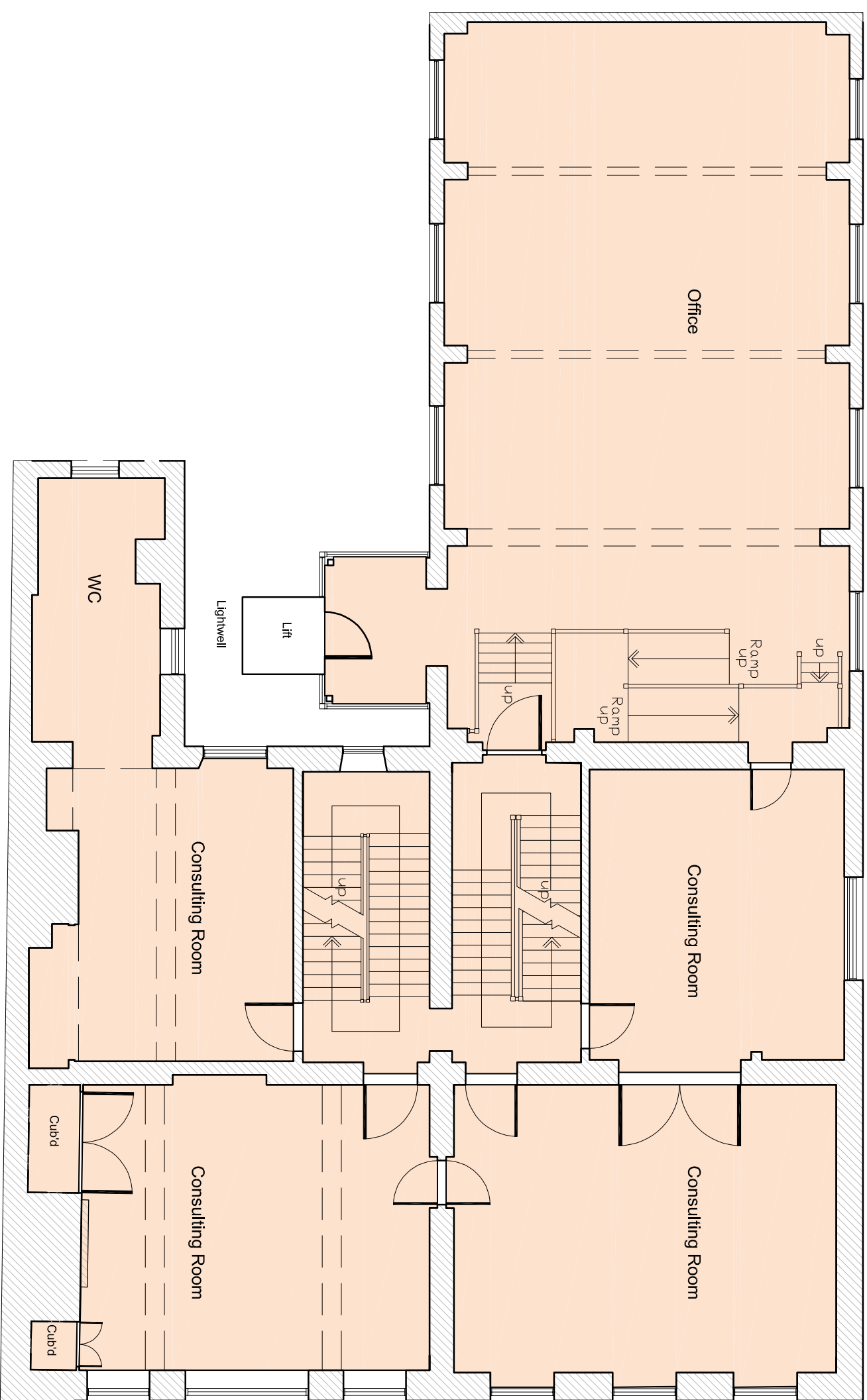
Use Class F1

[illegible]

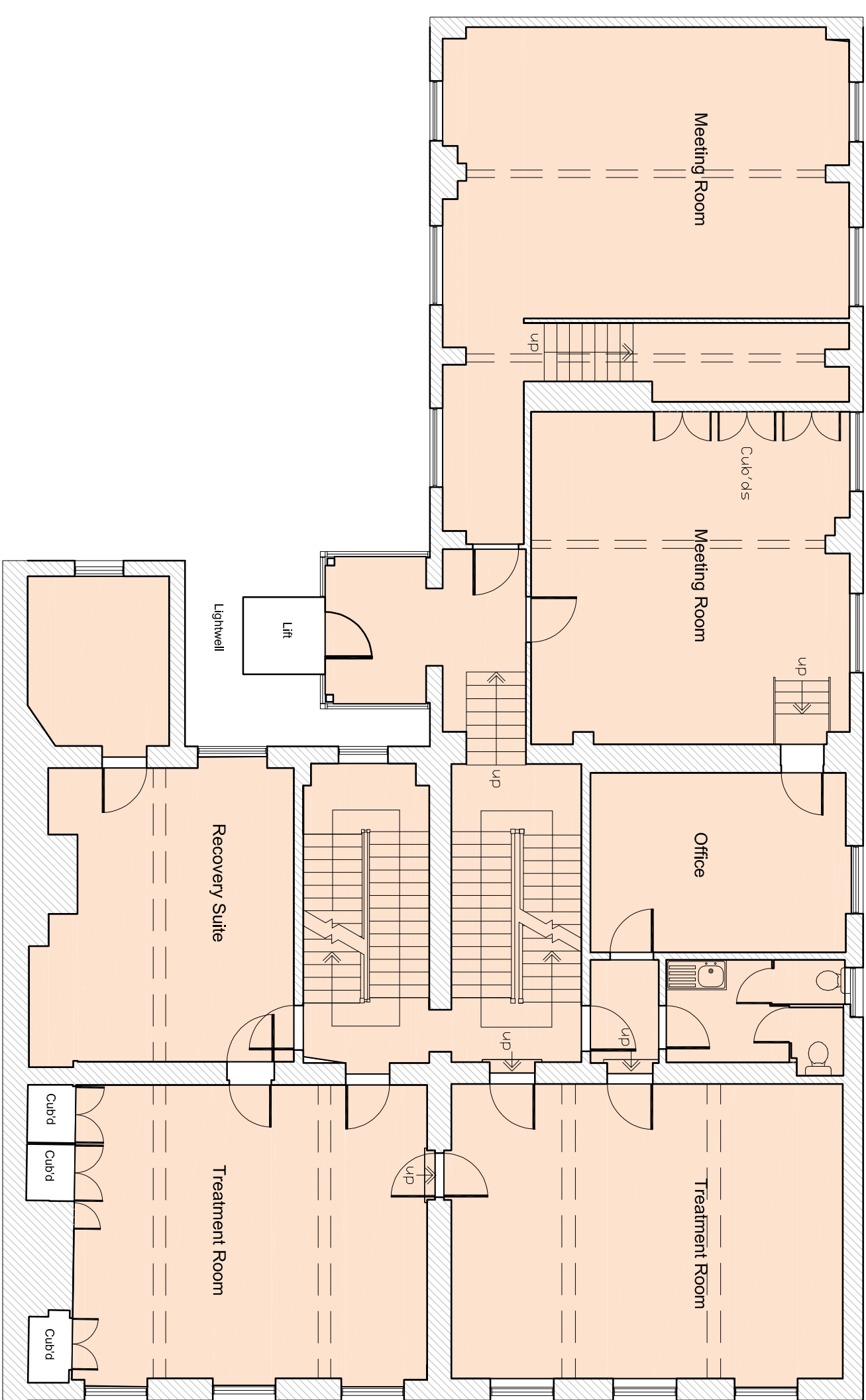
[illegible]



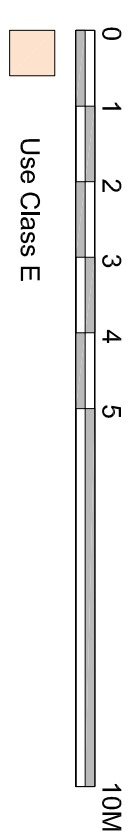
| | | | | | | | | | |
|---|--|--|--|--|--|--|--|--|--|
| <div><div><div><div><div></div><div>31 Chiswick Road</div></div><div><div><div></div><div>+44(0)20 7739 5400</div></div><div><div></div><div>studio@gibberd.com</div></div><div><div></div><div>www.gibberd.com</div></div></div><div><div><div><div>REV</div><div>DESCRIPTION</div></div><div>DATE</div><div>DRAWN</div><div>AUTH</div><div>REV</div><div>DESCRIPTION</div><div>DATE</div><div>DRAWN</div><div>AUTH</div></div></div></div><div><div><div>Client: Royal Female School of Art Foundation</div><div>Project: 42-43 Queen Square - Change of Use</div><div>Title: Proposed Basement and Ground Floor Plans</div></div><div><div>Interrel Project No.: --</div><div>Suitabil: --</div></div></div><div><div><div>Series: General Arrangement</div><div>Date: April 2023</div><div>Scale (A1): 1/100</div></div><div><div>Job No.: 2117</div><div>Originator: FGP</div><div>Zone: XX</div><div>Level: XX</div><div>Type: PL</div><div>File: A</div><div>Number: 0030</div><div>Rev: --</div></div><div><div>Draught: IF</div><div>Reviewed: IF</div><div>Auth: IF</div><div>Status: Planning</div></div></div></div><div><div><div>© Copyright of the information is vested in Frederick Gibberd Partnership</div><div></div><div><div>gibberd</div><div>architectural interior conservation</div></div></div></div></div> | | | | | | | | | |
|---|--|--|--|--|--|--|--|--|--|

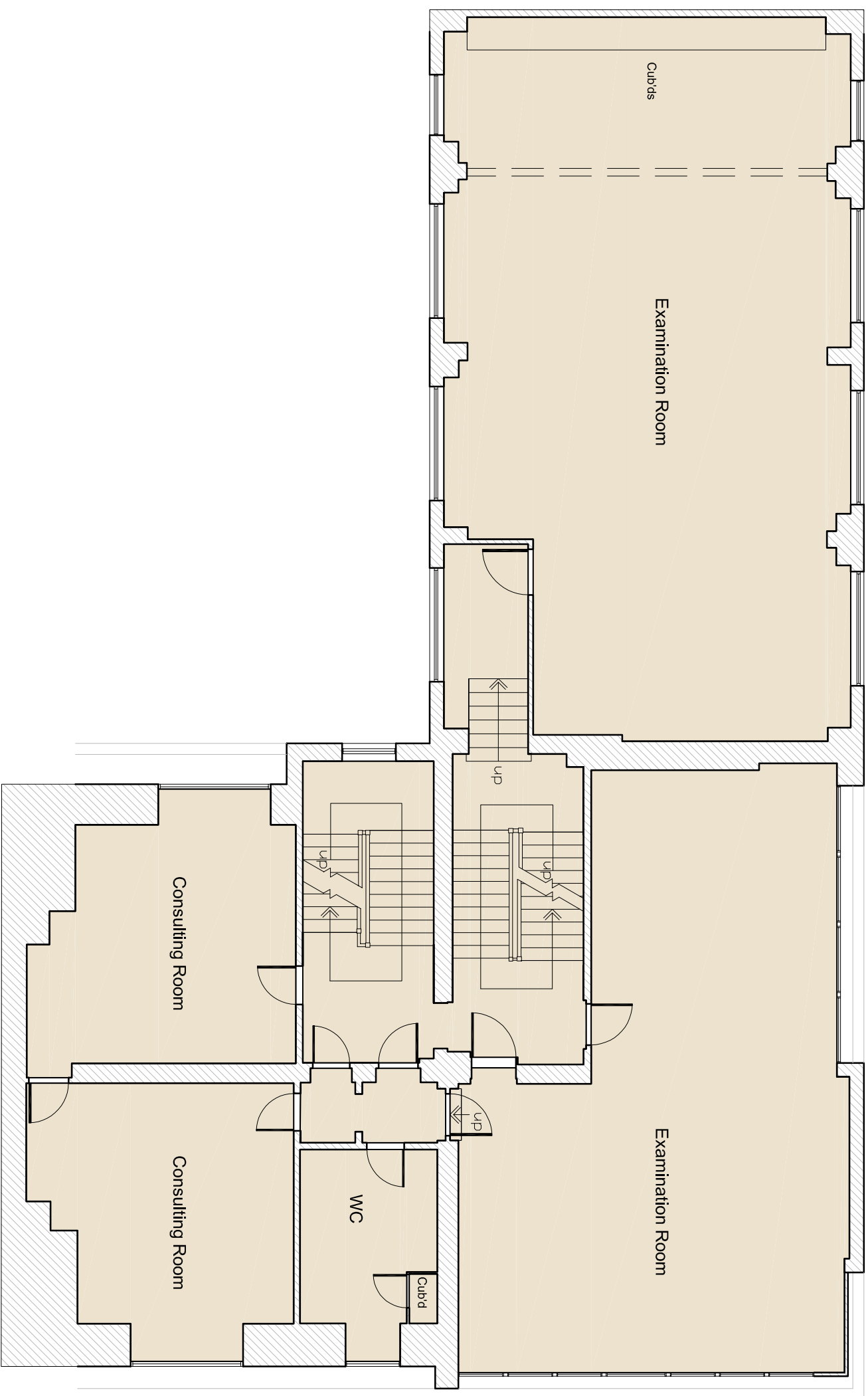


First Floor

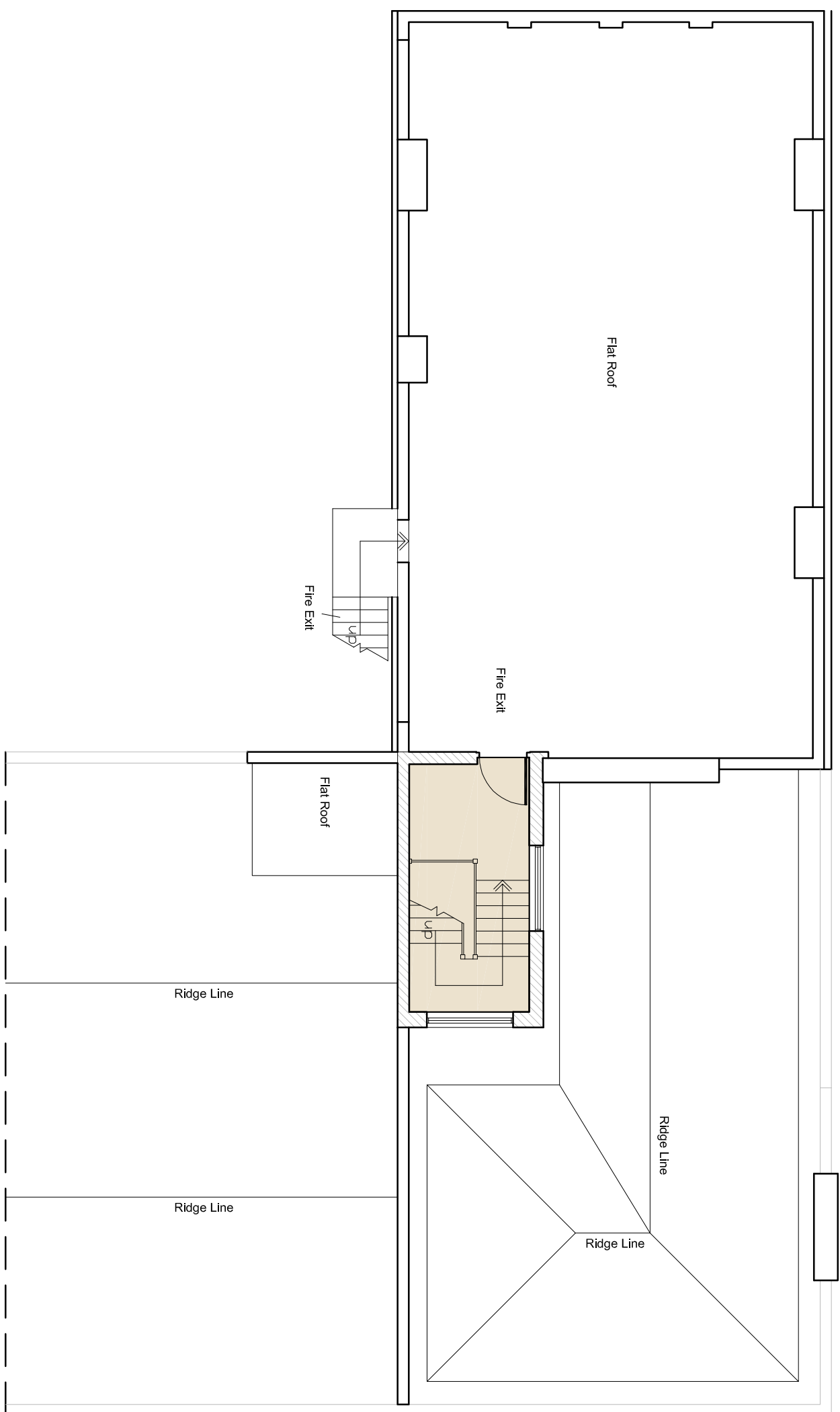


Second Floor

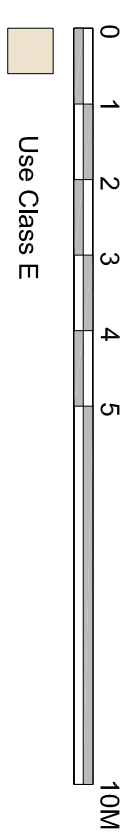
[illegible]



Third Floor



~~⊗~~ Fourth Floor / Roof Plan

[illegible]