

NOTE: ALL DIMENSIONS TO BE CHECKED ON SITE BY WINDOW MANUFACTURER

All windows shown from external side.

All dimensions shown against window types relate to the structural opening sizes, no tolerance included. Check all dimensions on site prior to ordering.

All glazed windows and doors to be manufactured by: TBC

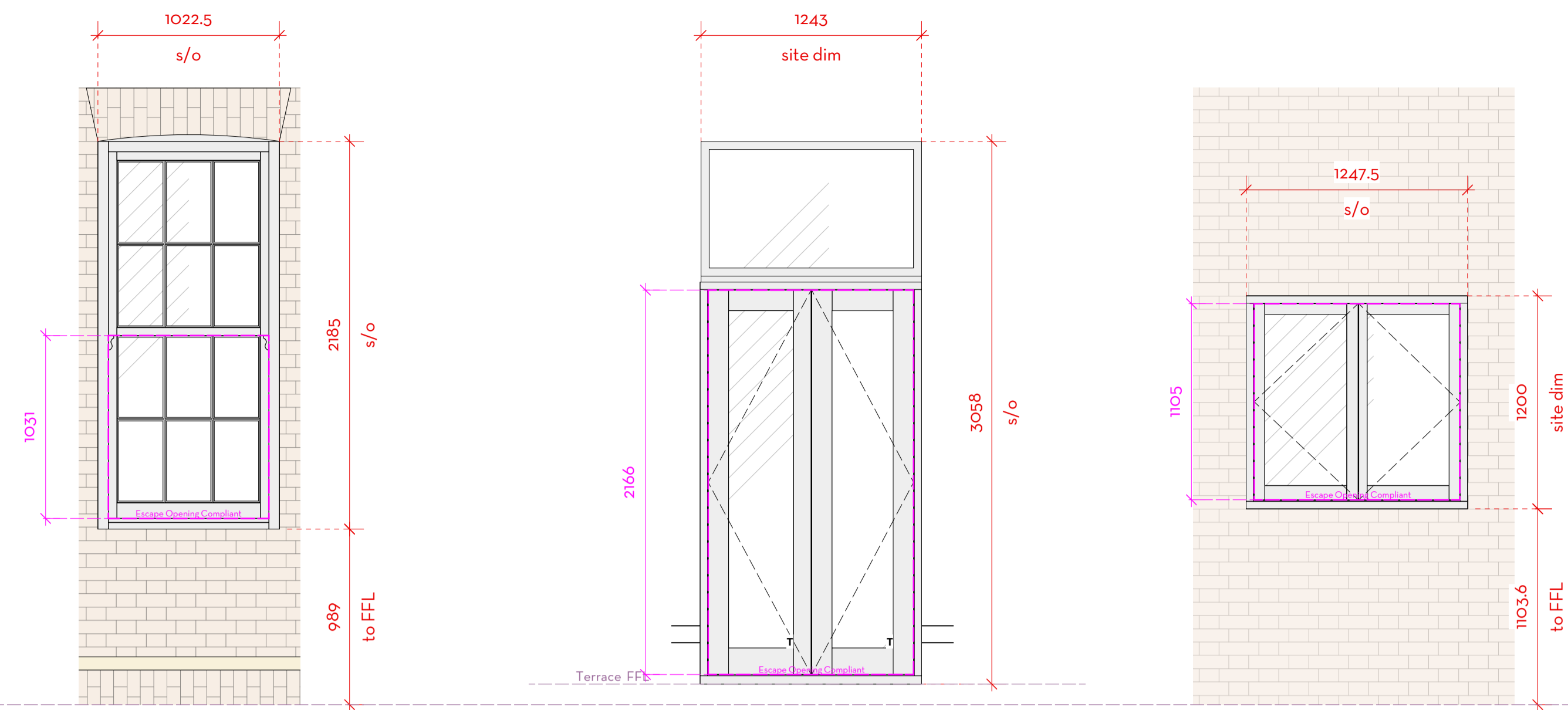
All windows to comply with the requirements of the Building Regulations 2010 (and subsequent amendments) including Part K (Safety), Part F (Ventilation), Part Q (Security) and Part L (Thermal Performance).

All safety glazing to comply with BS EN 12600 section 4 and BS 6206 clause 5.3.

All glazing up to 800mm on windows to be toughened glass. All glazing up to 1500mm on doors to be toughened glass. All laminated or Toughened glass to be visibly BS Kite marked at the bottom LH corner of each pane.

Windows to achieve a U-value of 1.4 W/m²K (area-weighted average) unless otherwise stated and in all cases windows also to have 'Trickle Vents' in accordance with the Building Regulations

Windows to ground floors, basements and other accessible windows (including rooflights) shall be secure windows in accordance with paragraphs 2.2 and 2.3 of the Building Regulations Part Q. Frames to be mechanically fixed to the structure of the building in accordance with the manufacturer's installation instructions.



GW-01 GW-02 GW-04

CONSERVATION AREA WINDOW TYPE
- By Main Contractor

VARYING OPENING STATES

Double Glazed Openable Timber Sash Window.
Whole Window U-value 1.4 W/m²K
Kite mark in bottom left.
Escape Window.

Trickle vent
Window furniture to be confirmed

GW-03

CONSERVATION AREA WINDOW TYPE
- By Main Contractor

EXISTING OPENING - ALTERED

Double Glazed Timber French Doors.
Whole Window U-value 1.4 W/m²K
Kite mark in bottom left.
Escape Doors.

Trickle vent
Window furniture to be confirmed

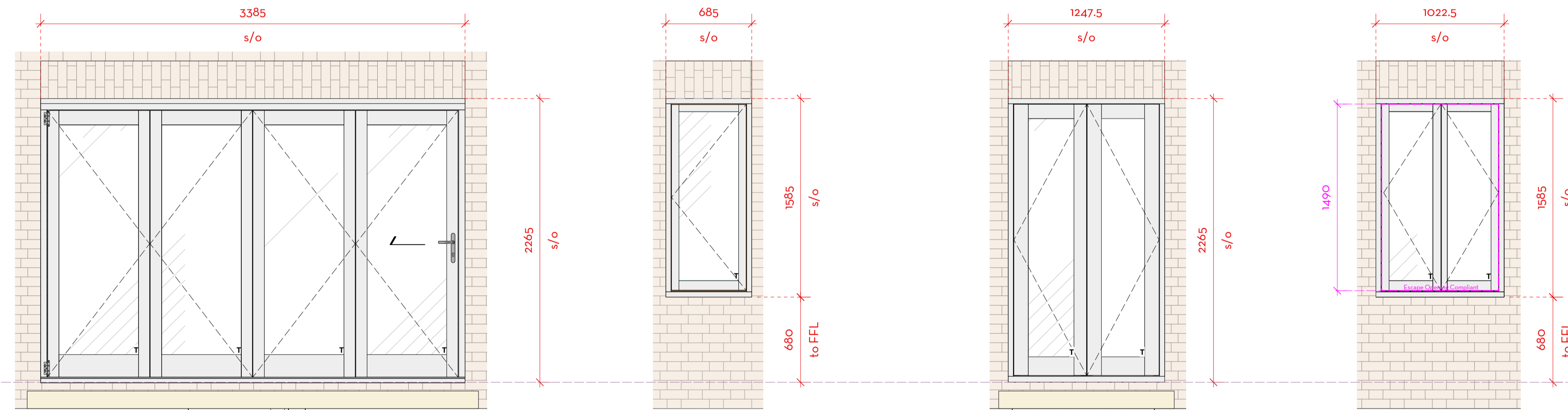
GW-05

CONSERVATION AREA WINDOW TYPE
- By Main Contractor

EXISTING OPENING - ALTERED

Double Glazed Openable Timber Casement Window.
Whole Window U-value 1.4 W/m²K
Kite mark in bottom left.
Escape Window.

Trickle vent
Window furniture to be confirmed



LGW-01

CONSERVATION AREA WINDOW TYPE
- By Main Contractor

NEW OPENING

Double Glazed Openable Timber Bifold Doors.
Whole Window U-value 1.4 W/m²K
Kite mark in bottom left.

Trickle vent
Window furniture to be confirmed

LGW-02 LGW-04

CONSERVATION AREA WINDOW TYPE
- By Main Contractor

NEW OPENING

Double Glazed Openable Timber Casement Window.
Whole Window U-value 1.4 W/m²K
Kite mark in bottom left.

Trickle vent
Window furniture to be confirmed

LGW-03

CONSERVATION AREA WINDOW TYPE
- By Main Contractor

NEW OPENING

Double Glazed Openable Timber French Doors.
Whole Window U-value 1.4 W/m²K
Kite mark in bottom left.

Trickle vent
Window furniture to be confirmed

LGW-05 LGW-06

CONSERVATION AREA WINDOW TYPE
- By Main Contractor

NEW OPENING

Double Glazed Openable Timber Casement Window.
Whole Window U-value 1.4 W/m²K
Kite mark in bottom left.
Escape Window.

Trickle vent
Window furniture to be confirmed

Do not scale. Use figured dimensions only
All dimensions to be checked on site
All drawings to be read in conjunction with
the Structural Engineer's drawings

131 KING HENRY'S ROAD
PROPOSED WINDOW SCHEDULE 1/2

PROJECT 131 King Henry's Road
ADDRESS 131 King Henry's Road, London NW3 3RB
CLIENT Whitehall Park
AUTHOR Hannah
DATE 01.02.23 SCALE 1:25 @ A1
DRAWING 259-PL-700-PL01



FOR PLANNING

Issued for Planning	Hannah	23.03.16	PL01
DESCRIPTION	BY	DATE	REV

This drawing is the copyright of Mutiny Architecture Ltd. Not to be reproduced, retained or disclosed to any unauthorised person either wholly or in part without written permission.

(T.F) 07951 248 528
muntiny-architecture.com

