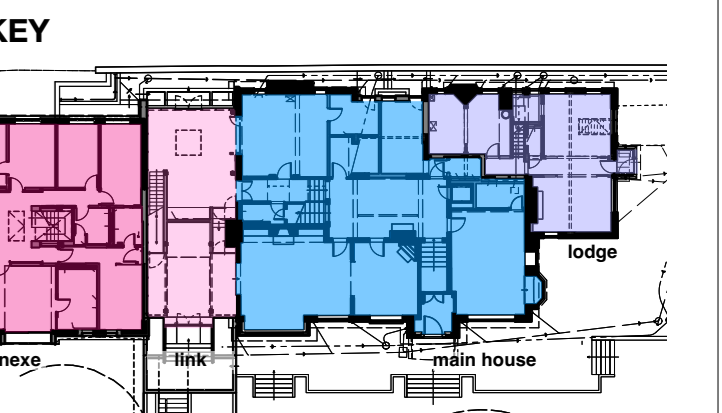


© BOWKER SADLER PARTNERSHIP LIMITED  
 THIS DRAWING IS THE SUBJECT OF COPYRIGHT WHICH VESTS IN BOWKER SADLER PARTNERSHIP LIMITED. IT IS AN INSTRUMENT OF COPYRIGHT TO REPRODUCE THIS DRAWING, BY WHATEVER MEANS, INCLUDING ELECTRONIC, WITHOUT THE EXPRESS WRITTEN CONSENT OF BOWKER SADLER PARTNERSHIP LIMITED WHICH RESERVES ALL ITS RIGHTS.  
 BOWKER SADLER PARTNERSHIP LIMITED ASSERTS ITS RIGHTS TO BE IDENTIFIED AS THE AUTHOR OF THIS DESIGN.  
 ■ REPORT ERRORS & OMISSIONS TO ARCHITECT.  
 ■ CHECK ALL DIMENSIONS ON SITE.  
 ■ DRAWING TO BE READ IN CONJUNCTION WITH THE HEALTH AND SAFETY PLAN AND ALL RELEVANT RISK ASSESSMENTS.

Survey drawings are kindly provided by Mutton Hughes Land Survey Ltd and are assumed to accurately describe the existing buildings, services and external spaces.



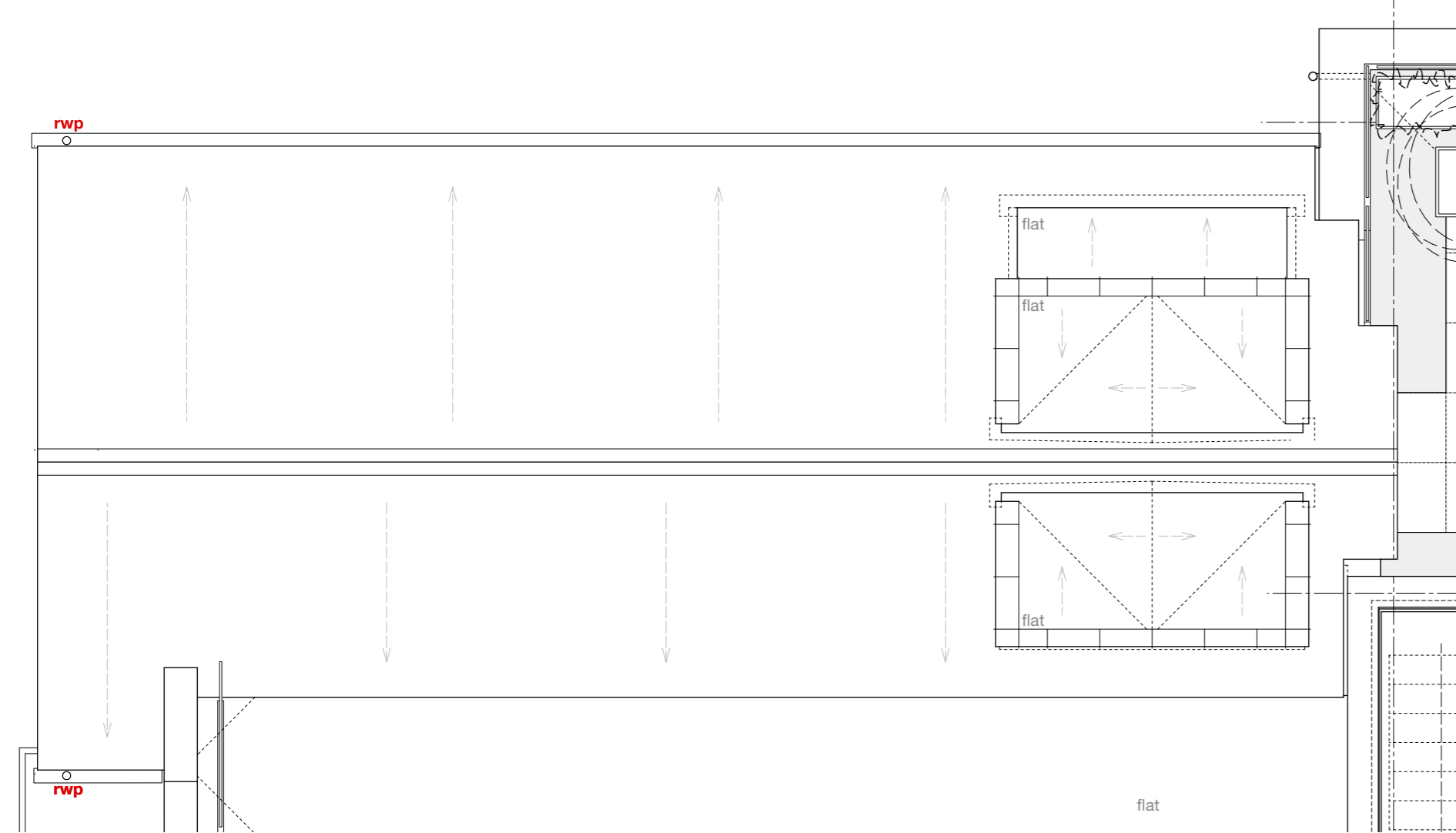
- Features**
- windows**
- bhc bottom hung timber casement window
  - lhc top hung timber casement window
  - shc side hung casement
  - vss vertical sliding sash timber window
  - fl fixed light timber window
  - rt roof light (flat roof)
  - vtf velux style roof light (pitched roof)
  - ct conservation style roof light (pitched roof)
  - h ceiling hatch
  - hf floor hatch
  - sd sliding door
  - sld sliding folding door

- drainage services and landscape**
- mh Existing manhole
  - ic Existing inspection chamber
  - wic Existing water service inspection chamber

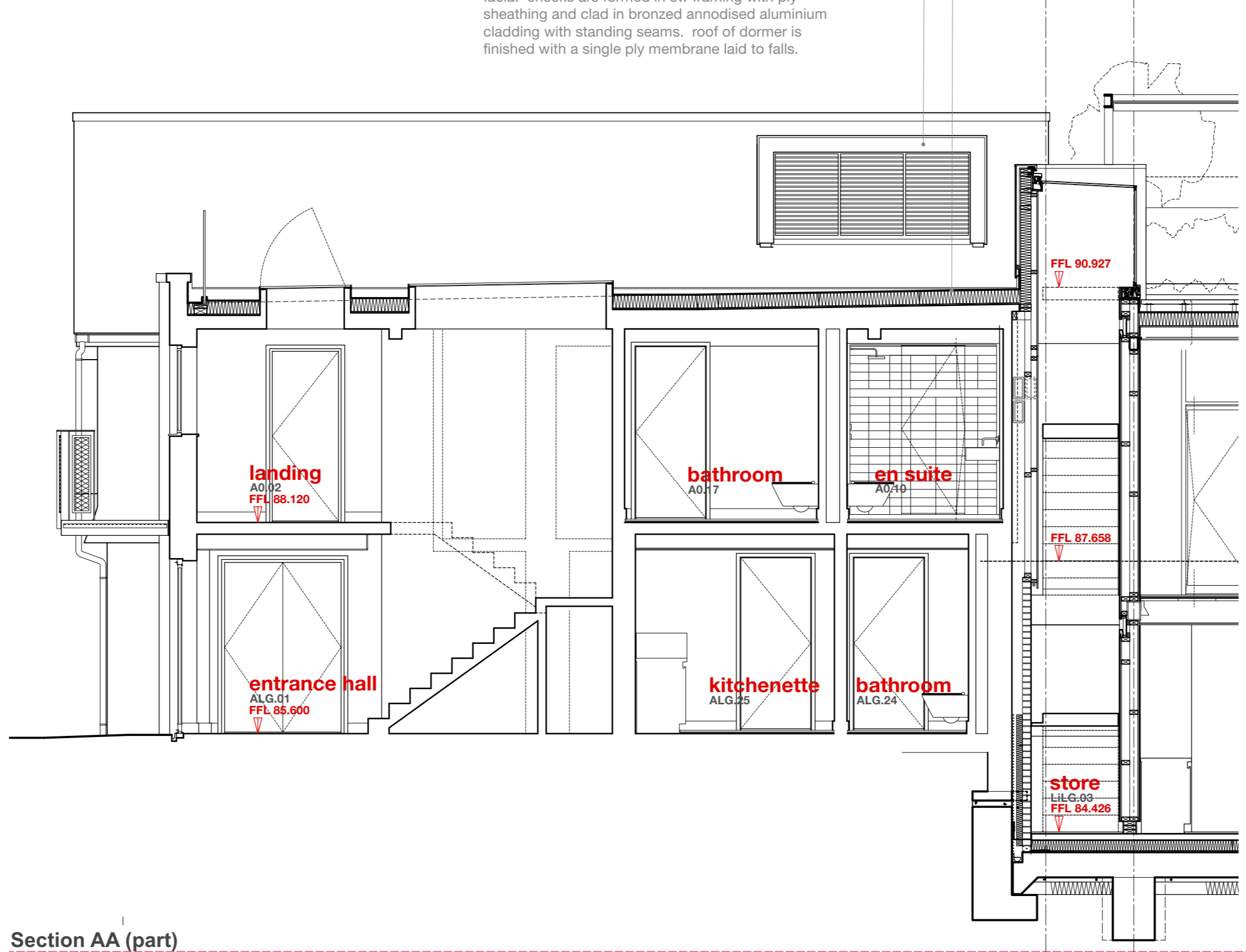
- FWIC 01**
- icu Inspection chamber collecting foul water drainage
  - syp Soil vent pipe and underground foul water drainage
  - wf Waste pipe from washbasin/shower to foul water drainage
  - rwp Rainwater pipe, gully and underground surface water drainage
  - rwp+h Rainwater hopper draining into rainwater hopper
  - sp Rainwater spout

- mechanical: heating**
- gas fire boiler and wall mounted flue
  - unvented cylinder

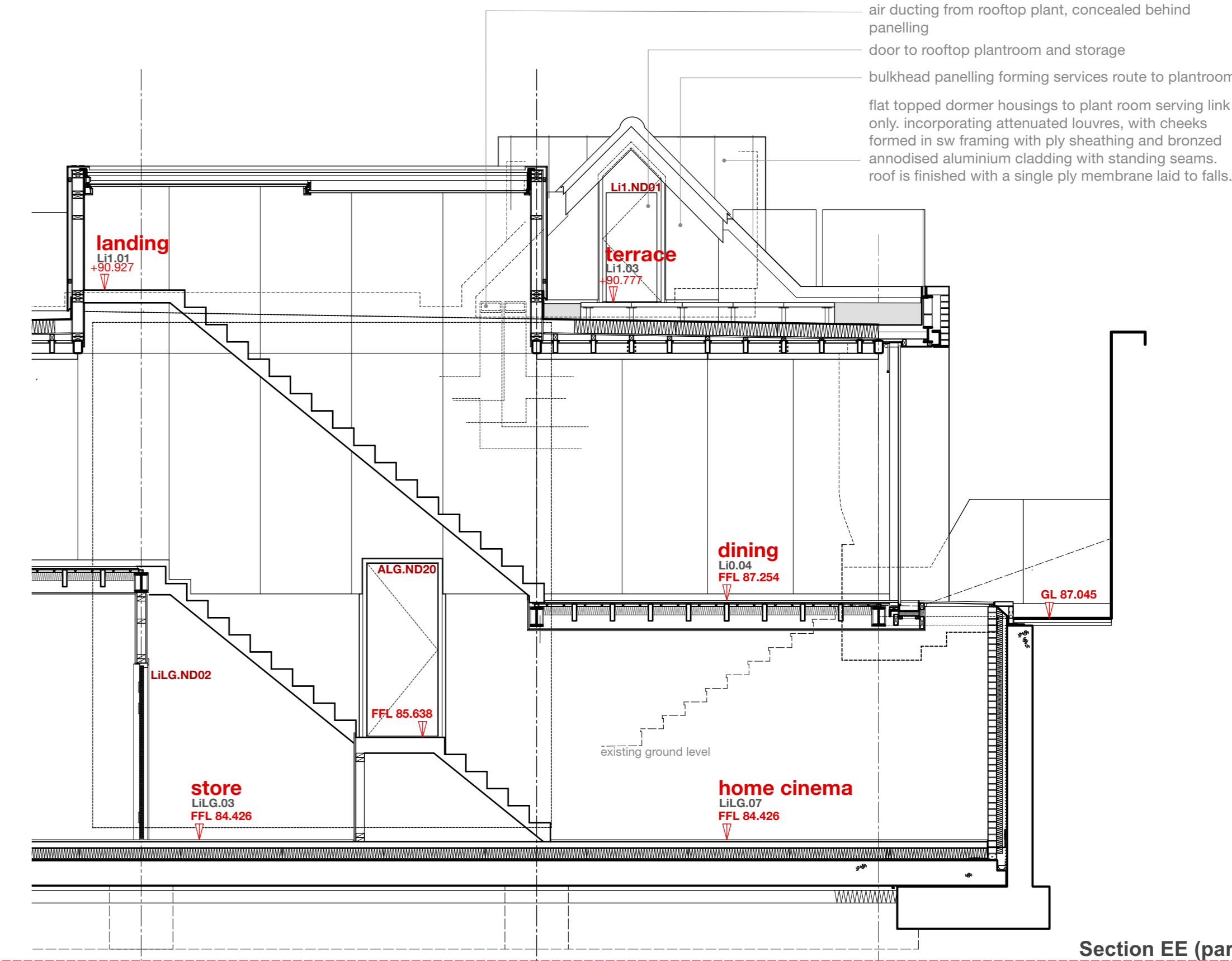
existing roof deck. strip off existing roof covering and fit new sheathing, rigid insulation and single ply polymeric membrane, laid to falls towards existing outlets.  
 housing to plant room serving link only, powder coated attenuated louvers, with powdercoated aluminium fascia. cheeks are formed in sw framing with ply sheathing and clad in bronzed anodised aluminium cladding with standing seams. roof of dormer is finished with a single ply membrane laid to falls.



Annexe Roof Layout at Second Floor

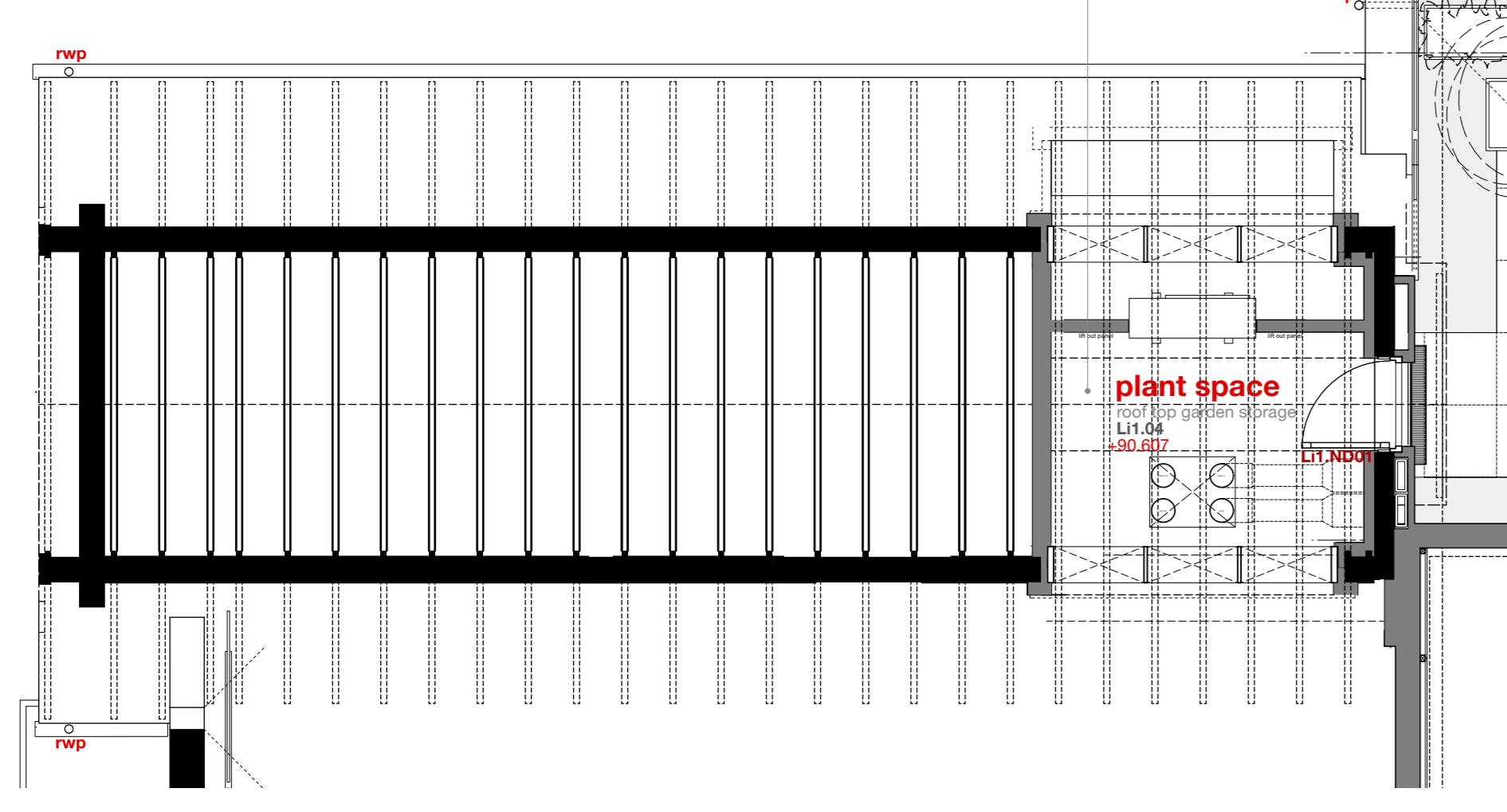


Section AA (part)



Section EE (part)

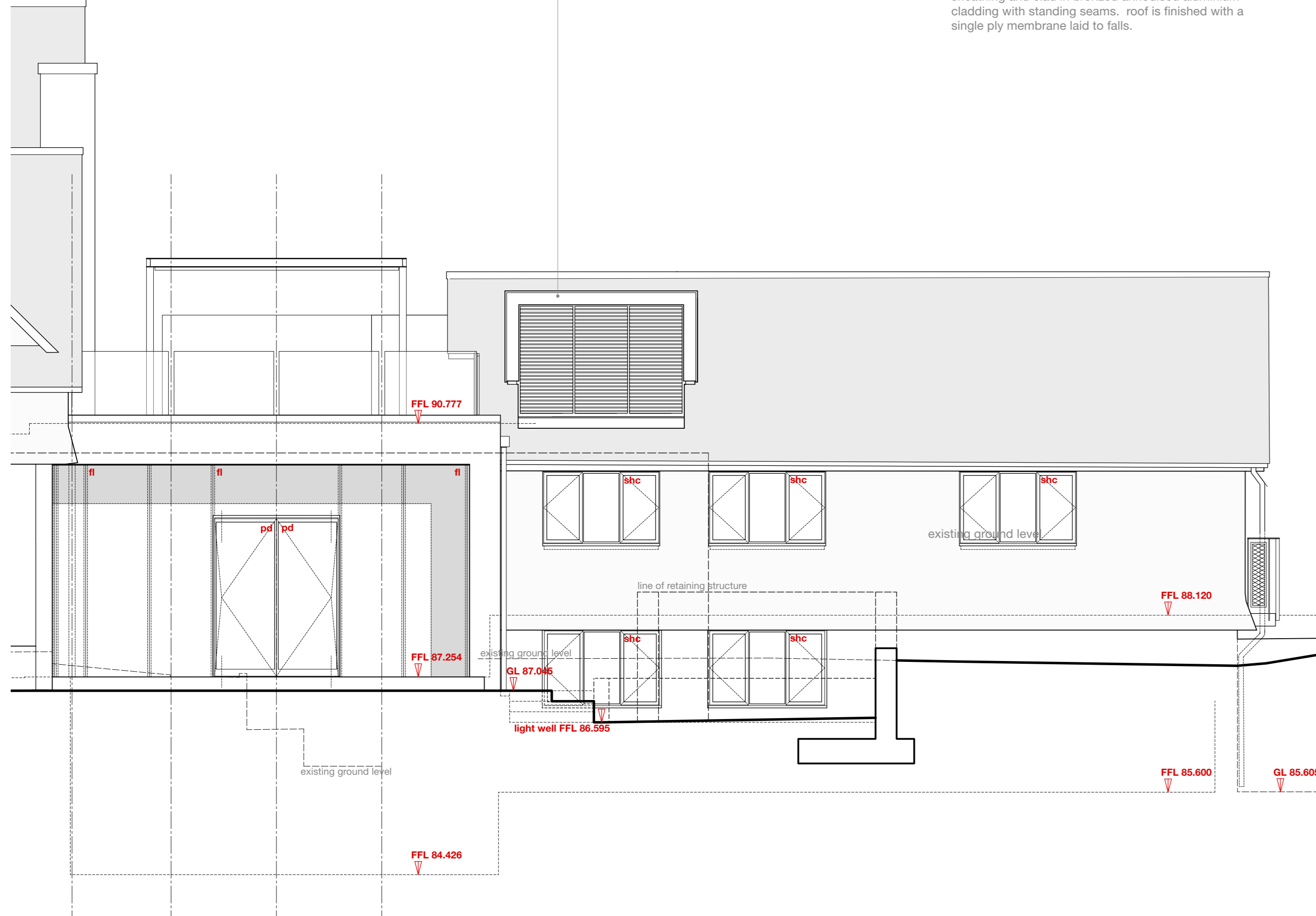
plant space for air handling units, mechanical air handling is limited to the link area only, implemented to moderate solar gain generated by the new glazed areas



Annexe Roof Layout at First Floor

housing to plant room serving link only, powder coated attenuated louvers, with powdercoated aluminium fascia. cheeks are formed in sw framing with ply sheathing and clad in bronzed anodised aluminium cladding with standing seams. roof is finished with a single ply membrane laid to falls.

housing to plant room serving link only, powder coated attenuated louvers, with powdercoated aluminium fascia. cheeks are formed in sw framing with ply sheathing and clad in bronzed anodised aluminium cladding with standing seams. roof is finished with a single ply membrane laid to falls.



Principal Elevation: North (part)



Principal Elevation: West

REV	DATE	DRN	CHKD
PROJECT			
<b>The Hoo: Scheme 2</b>			
<b>17 Lyndhurst Gardens, Hampstead, London</b>			
Returning A Grand Victorian House to Private Domestic Accommodation NW3 SNU			
CLIENT			
<b>Mr and Mrs Yu</b>			
REPRESENTED BY			
<b>JAGA Developments (London)</b>			
DRAWING			
<b>Annexe: Plant Room: Plans, Sections and Elevations as Proposed</b>			
SCALE	SHEET SIZE	DRAWN	CHECKED
1:50	A0	GM:c	Mar 2022

**BOWKER SADLER ARCHITECTURE**  
 A: Hatherlow House, Hatherlow, Romley, Stockport SK8 3DY  
 T: 0161 406 7333  
 E: info@bowker-sadler.co.uk  
 W: www.bowker-sadler.co.uk

JOB No	DRAWING No	REVISION
<b>19013</b>	<b>1162</b>	
STATUS	FOR PLANNING	