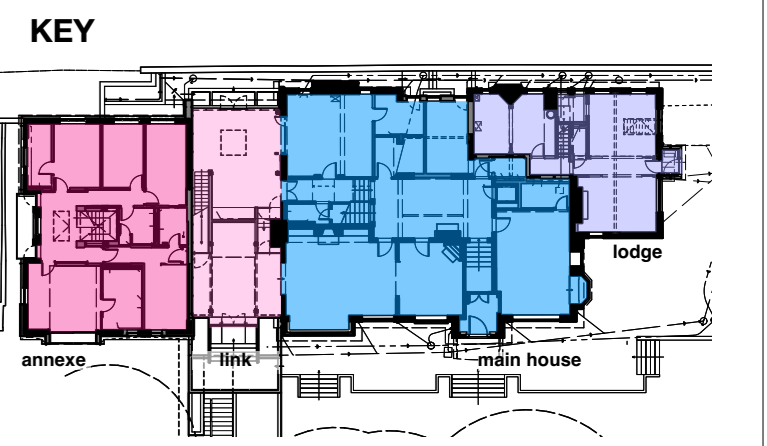


© BOWKER SADLER PARTNERSHIP LIMITED
 THIS DRAWING IS THE SUBJECT OF COPYRIGHT WHICH VESTS IN BOWKER SADLER PARTNERSHIP LIMITED. IT IS AN INSTRUMENT OF COPYRIGHT TO REPRODUCE THIS DRAWING, BY WHATEVER MEANS, INCLUDING ELECTRONIC, WITHOUT THE EXPRESS WRITTEN CONSENT OF BOWKER SADLER PARTNERSHIP LIMITED WHICH RESERVES ALL ITS RIGHTS.
 BOWKER SADLER PARTNERSHIP LIMITED ASSERTS ITS RIGHTS TO BE IDENTIFIED AS THE AUTHOR OF THIS DESIGN.
 ■ REPORT ERRORS & OMISSIONS TO ARCHITECT.
 ■ CHECK ALL DIMENSIONS ON SITE.
 ■ DRAWING TO BE READ IN CONJUNCTION WITH THE HEALTH AND SAFETY PLAN AND ALL RELEVANT RISK ASSESSMENTS.

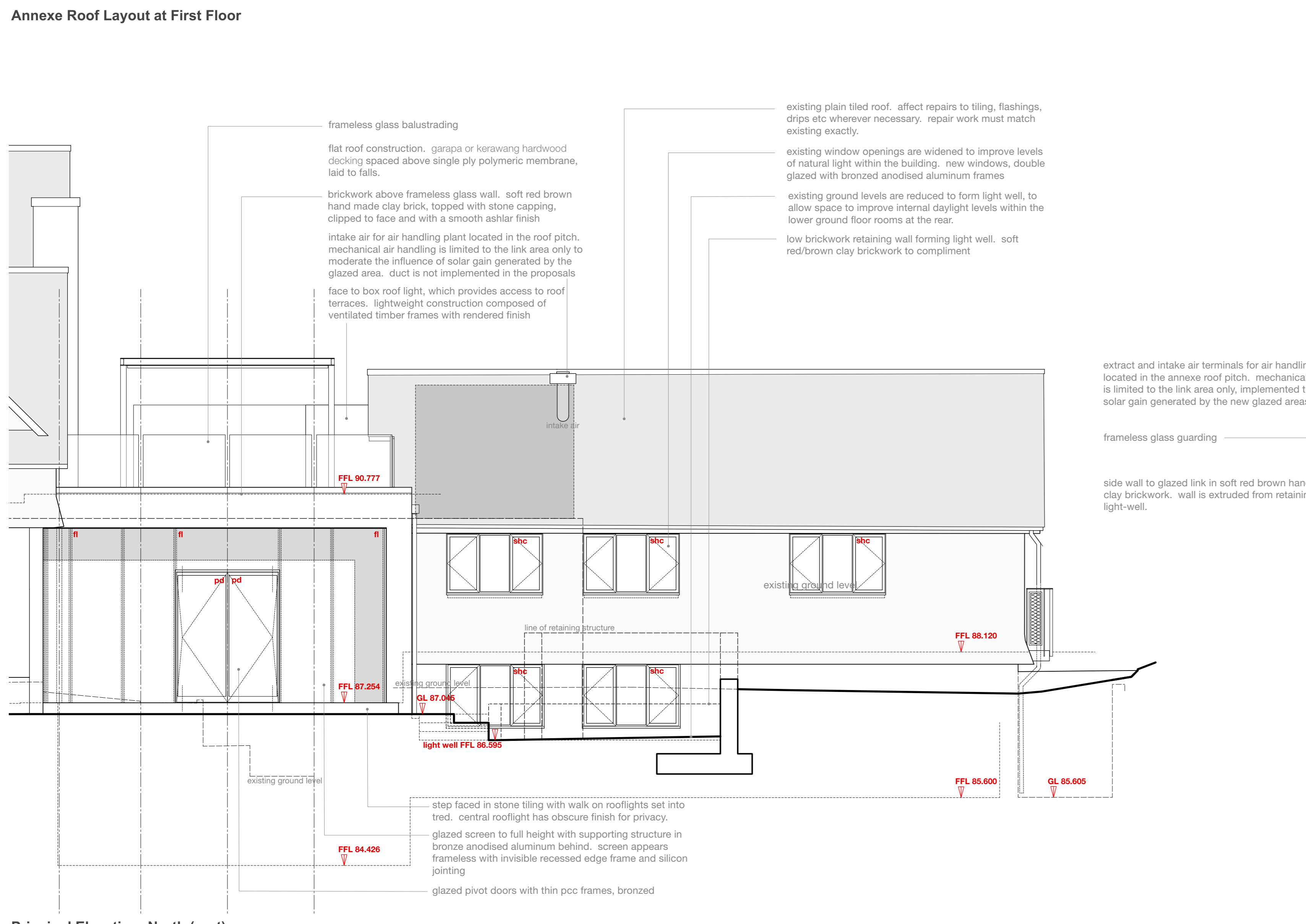
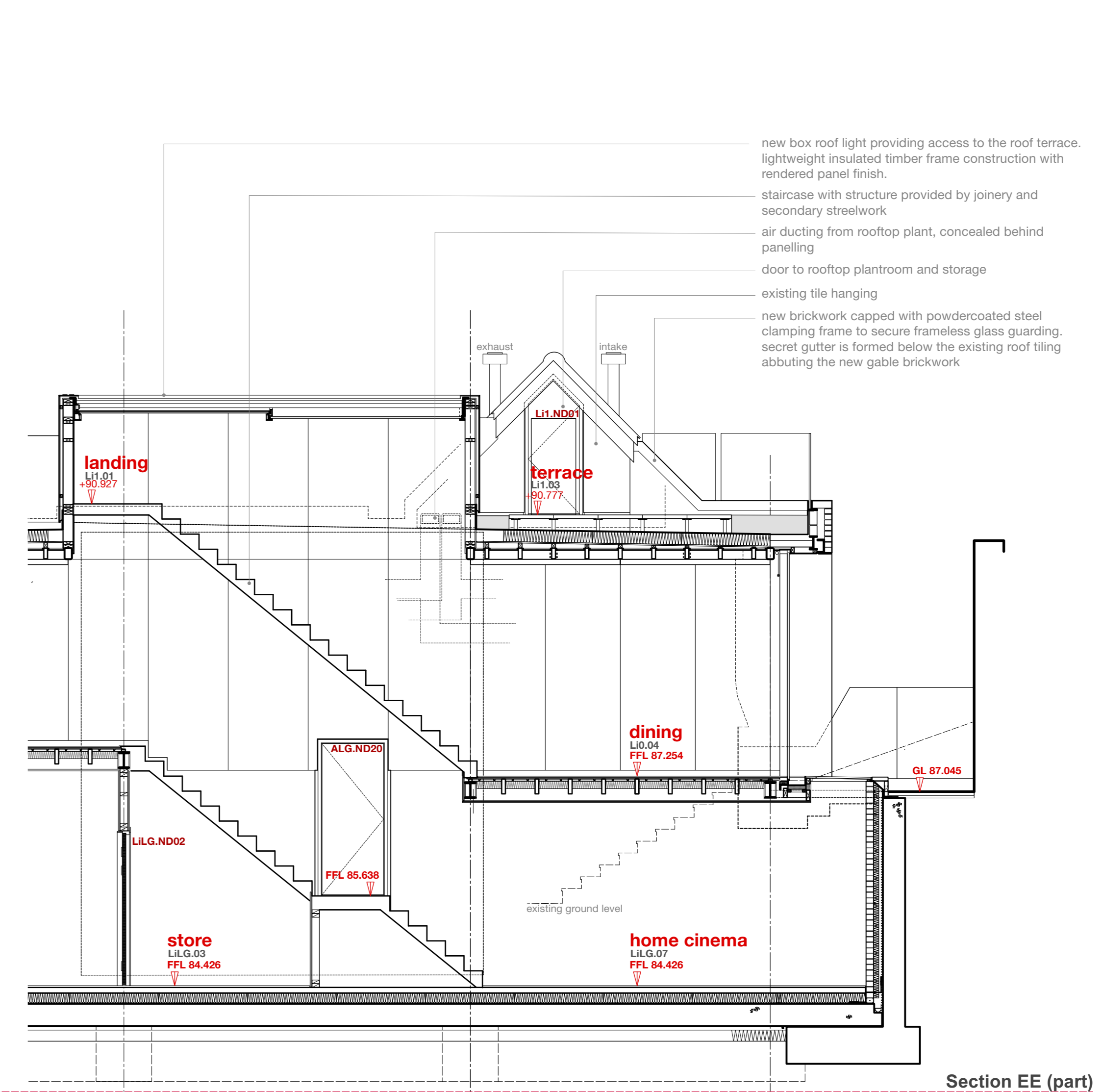
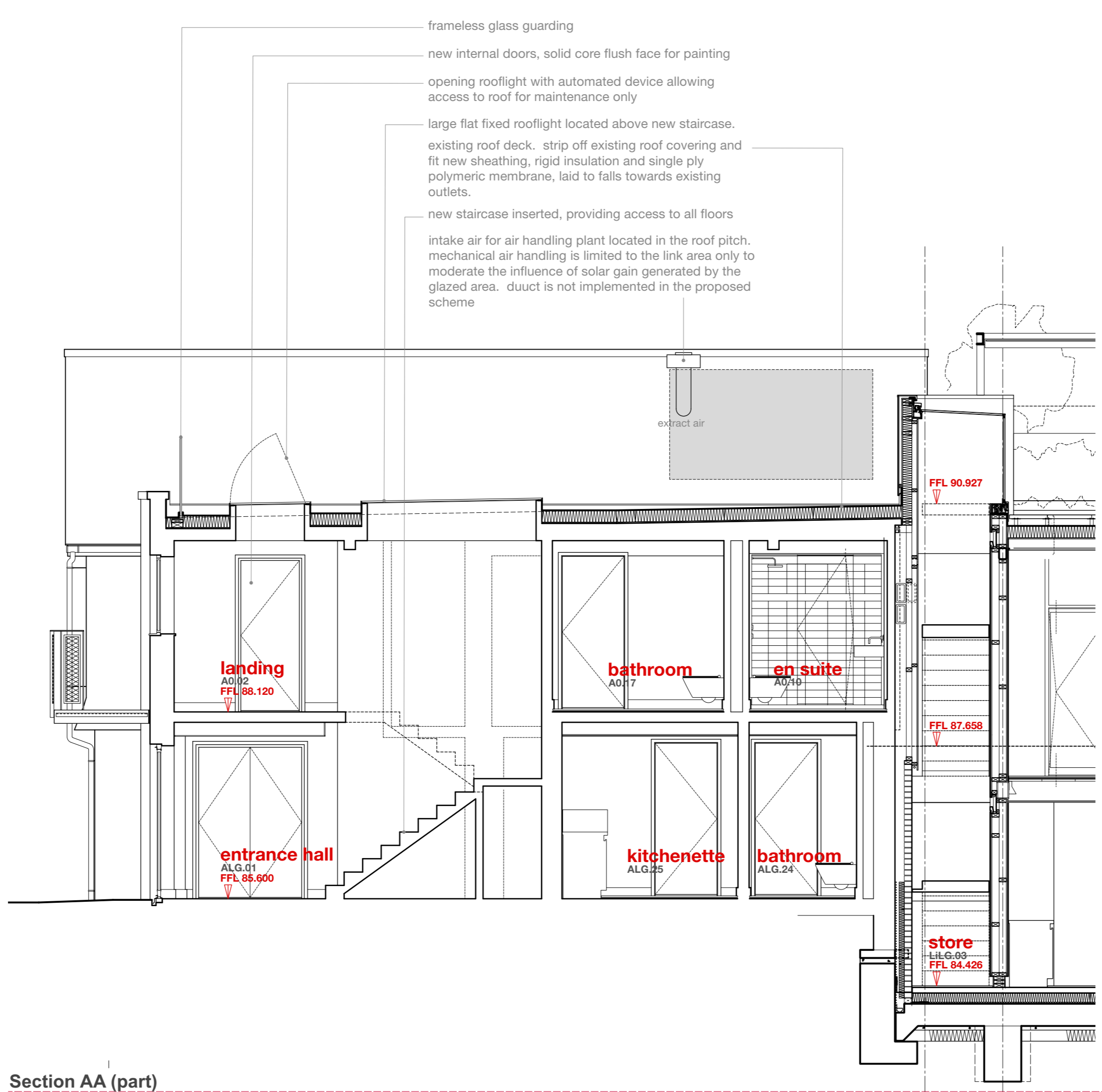
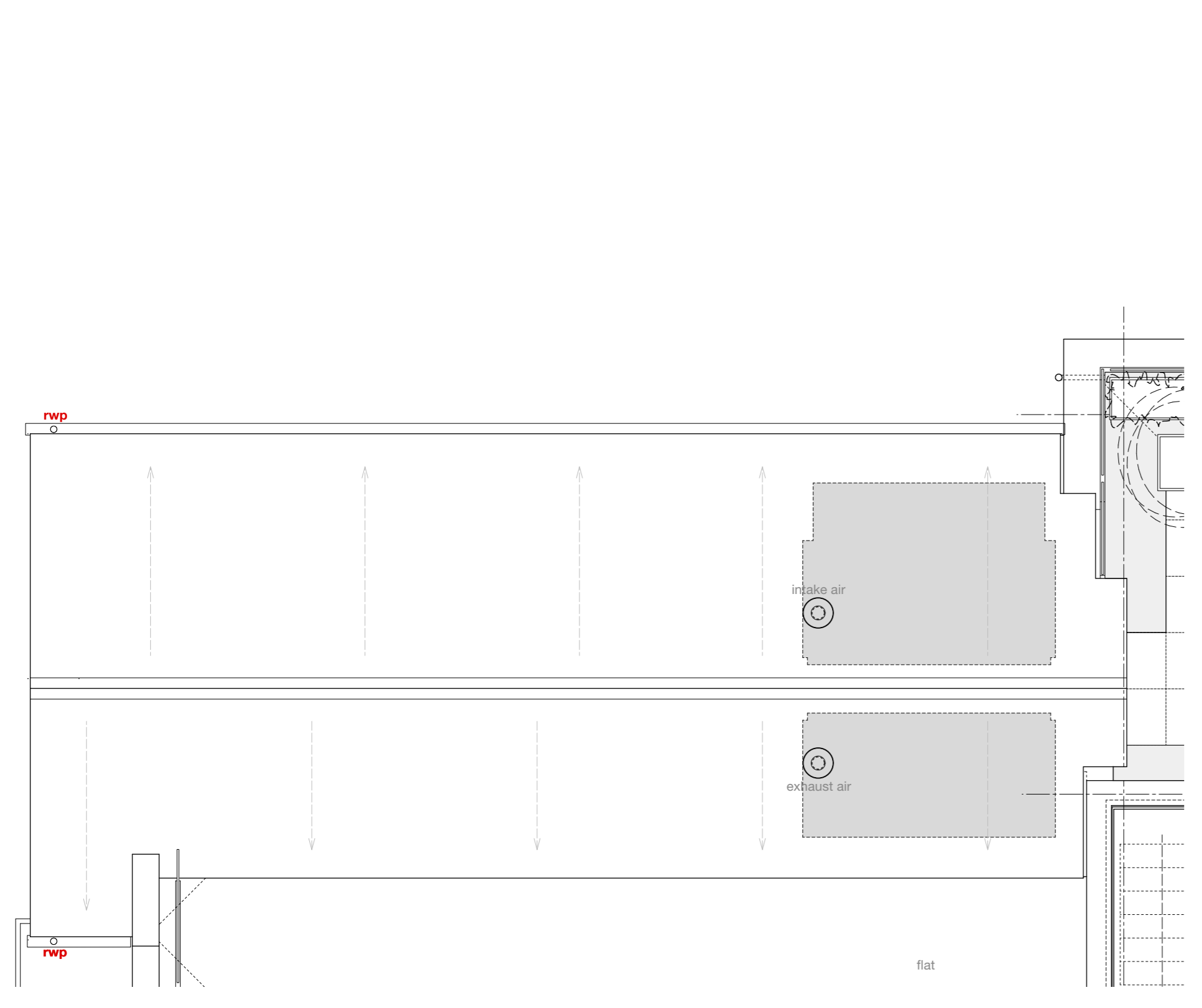
Survey drawings are kindly provided by Mutton Hughes Land Surveys Ltd and are assumed to accurately describe the existing buildings, services and external spaces.



- Features**
- windows**
- bhc bottom hung timber casement window
 - bhc top hung timber casement window
 - shc side hung casement
 - vss vertical sliding sash timber window
 - fl fixed light timber window
 - rt roof light (flat roof)
 - vtf velux style roof light (pitched roof)
 - cr conservation style roof light (pitched roof)
 - h ceiling hatch
 - hf floor hatch
 - sd sliding door
 - sld sliding folding door
- drainage services and landscape**
- mh Existing manhole
 - ic Existing inspection chamber
 - wic Existing water service inspection chamber

- FWIC 01**
- icw inspection chamber collecting foul water drainage
 - svp soil vent pipe and underground foul water drainage
 - wf waste pipe from washbasin/shower to foul water drainage
 - rwp rainwater pipe, gully and underground surface water drainage
 - rwp+h rainwater hopper draining into rainwater hopper
 - sp rainwater spout

- mechanical heating**
- gas fire boiler and wall mounted flue
 - unvented cylinder



REV | DATE | DRN | | CHKD |

PROJECT
 The Hoo: Scheme 2
 17 Lyndhurst Gardens,
 Hampstead, London
 Returning A Grand Victorian House to Private Domestic Accommodation
 NW3 5NU

CLIENT
 Mr and Mrs Yu
 REPRESENTED BY
 JAGA Developments (London)

DRAWING
 Annexe:
 Plant Room: Plans, Sections
 and Elevations
 as Approved

SCALE | SHEET SIZE | DRAWN | CHECKED | DATE
 1:50 | A0 | GM:c | | Mar 2022

BOWKER SADLER ARCHITECTURE
 A: Hatherlow House, Hatherlow, Romley, Stockport SK6 3DY
 T: 0161 406 7333
 E: info@bowker-sadler.co.uk
 W: www.bowker-sadler.co.uk

JOB No: **19013** | DRAWING No: **1062** | REVISION STATUS: **FOR PLANNING**