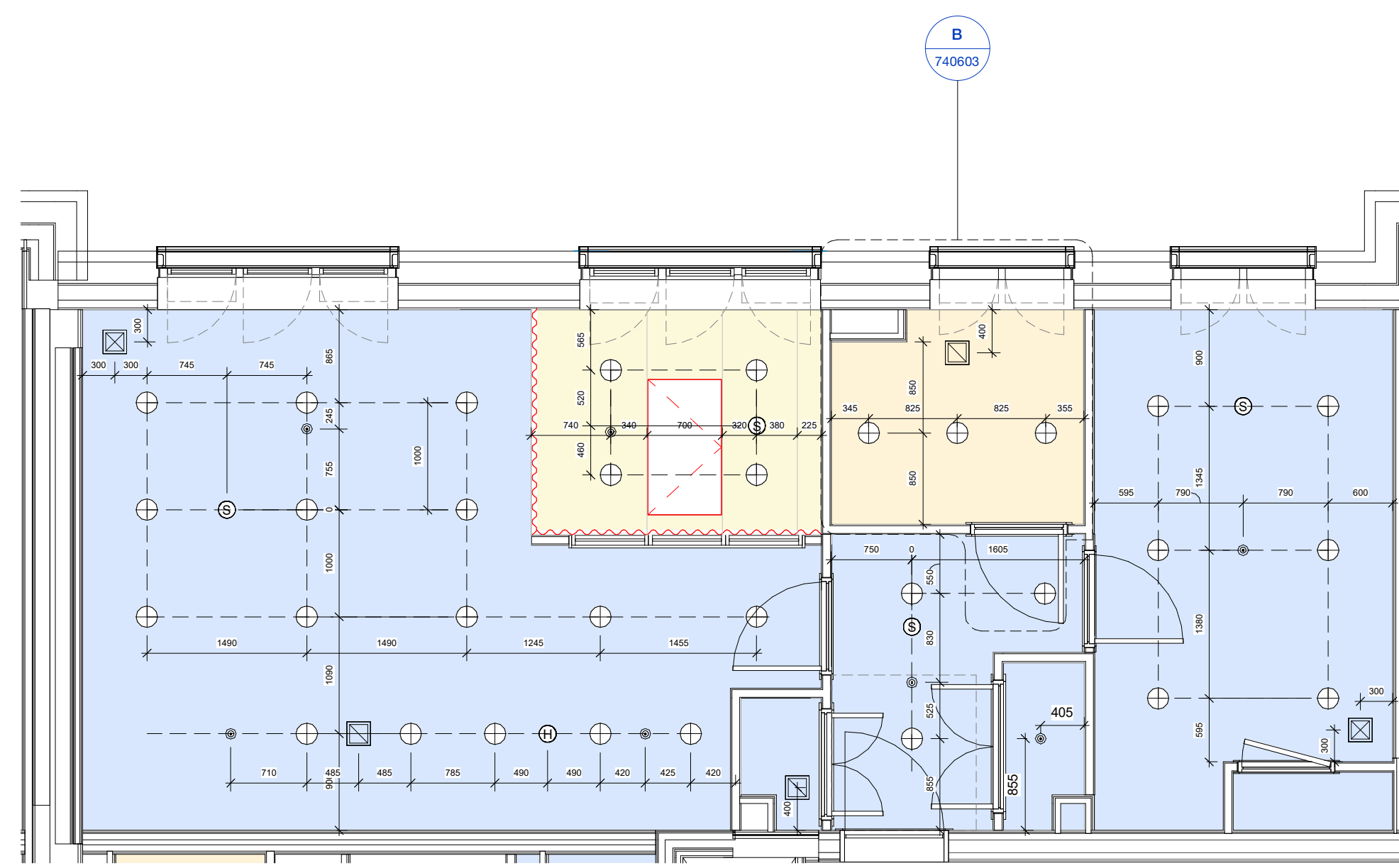


Internal Wall Setting Out

Refer to 20 Series - General Arrangement for building-wide plans



Reflected Ceiling Plan

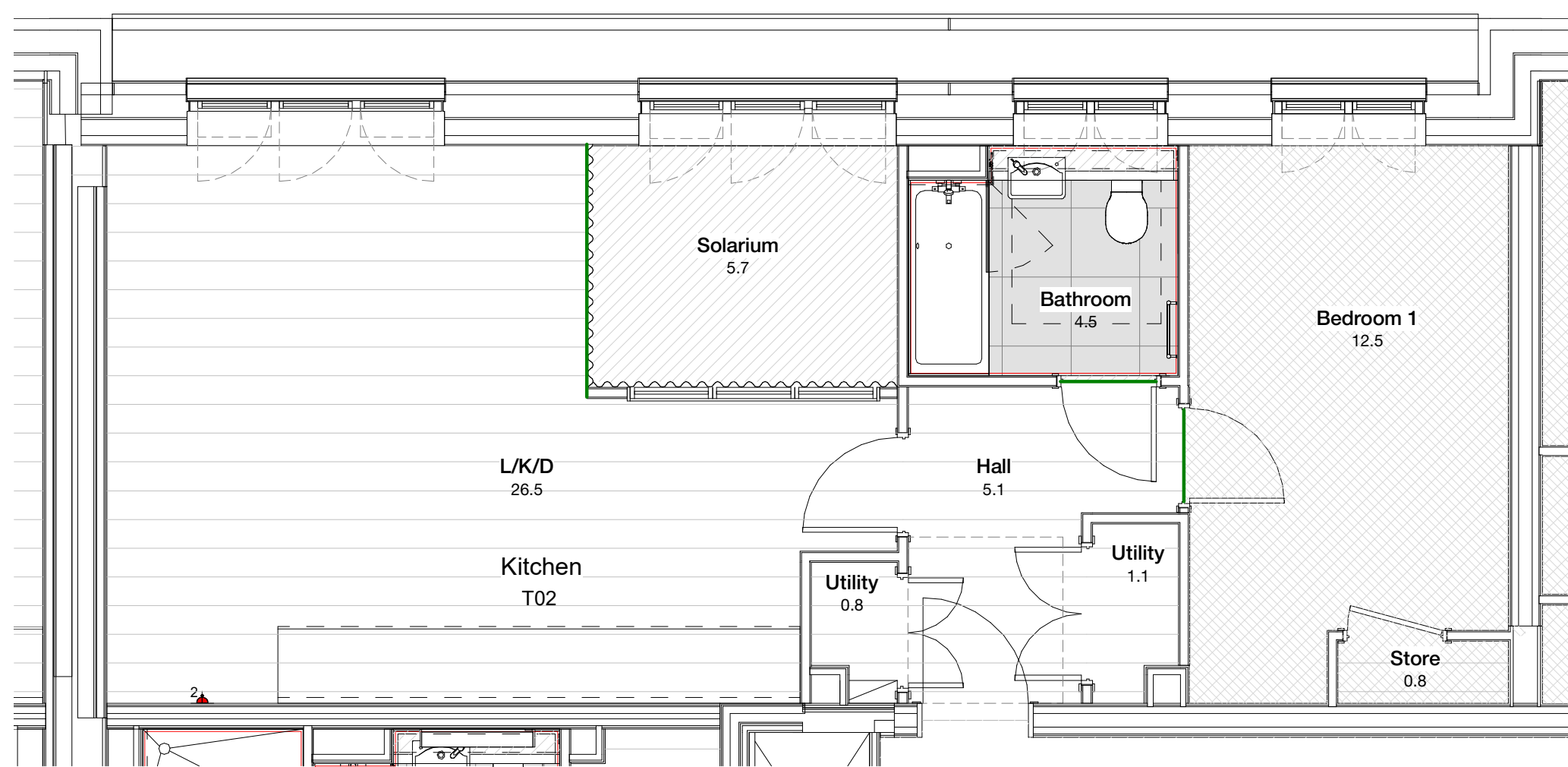
Specialist subcontractor to verify setting out of sprinkler heads, heat/smoke detectors and fire alarms.

Key

- Downlight
- Pendant Light
- Mechanical Extract
- Mechanical Supply
- Recessed Curtain Track
- Heat Detector
- Smoke Detector
- Sprinkler Head
- External Wall Light
- External Downlight
- Plasterboard - Dwelling (See T-Sheet CLG-102)
- Plasterboard - Bulkhead (See T-Sheet CLG-103)
- Plasterboard - Bathrooms (See T-Sheet CLG-104)
- Aluminium - Solarium (See T-Sheet CLG-105)
- MVHR Access Panel

Note

Refer to 35 Series for apartment ceiling details. Service voids and penetrations to be confirmed. Switches to lighting work in progress. Sprinklers required to all units in line with BS standard BS9251:2014. Number and setting out of heads to be reviewed and confirmed by specialist.

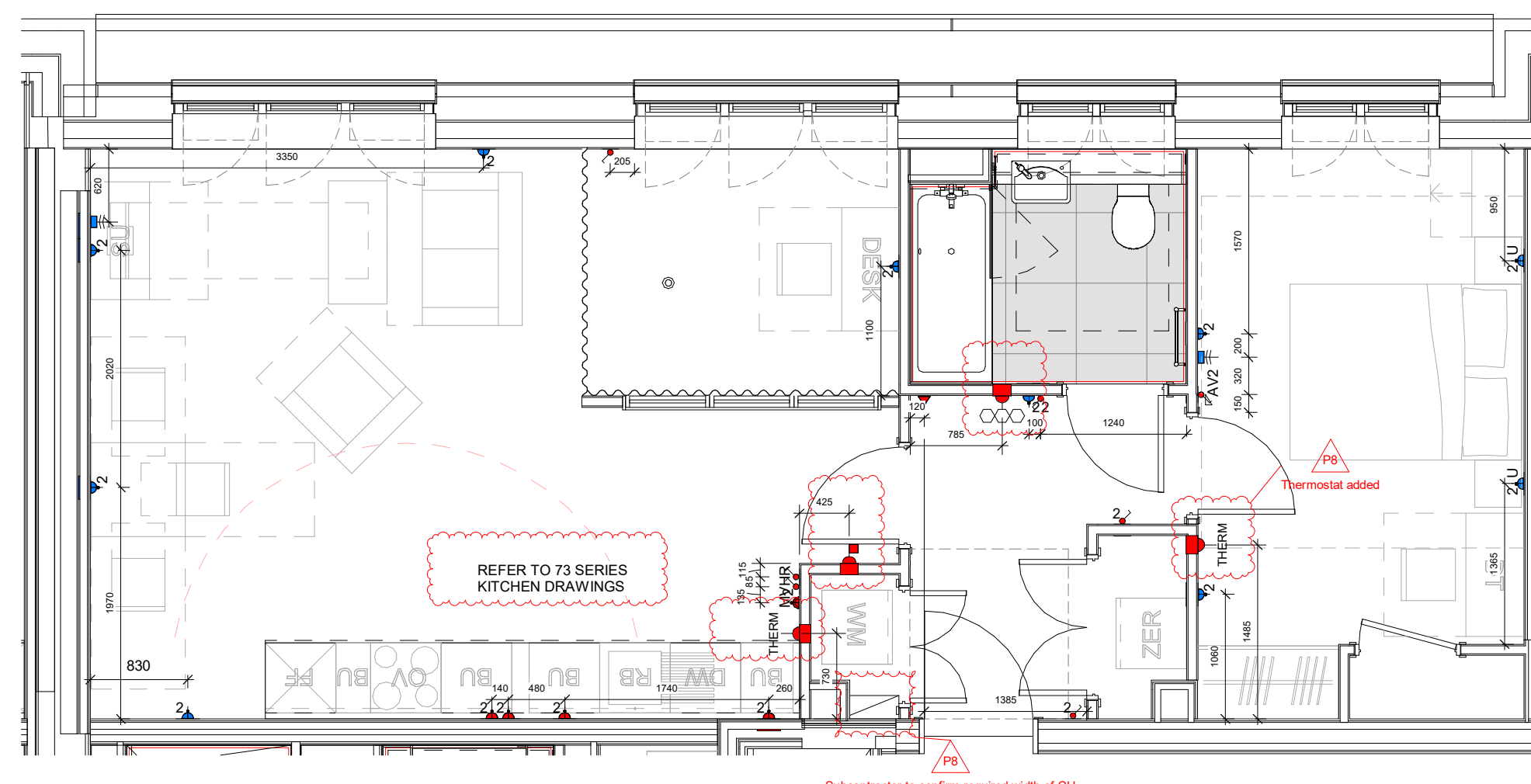


Apartment Finishes Plan

Key

- Threshold strip between floor finishes
- Noising strip to stairs
- Fitted furniture within contact (Note: Colours not yet updated to show)
- Furniture outside contact (Note: Colours not yet updated to show)
- Flooring Type 01 - Principles for setting out of Luxury Vinyl Tile flooring to be agreed with HPL prior to showing.
- Flooring Type 02 - Principle for setting out of tile to solariums to be established with HPL prior to showing.
- Luxury Vinyl Tile - Type 01 (See T-Sheet XXX-XXX)
- Tiled Flooring - Type 02 (See T-Sheet XXX-XXX)
- Carpet - Type 03 (See T-Sheet XXX-XXX)
- Paint finish to Living, Dining, Hallway, Bedroom: 1 No Mist and 2 nr. Full coats of Dulux trade matt emulsion to drylined plasterboard walls (siped and filled, not skim).
- Paint finish to Kitchens and Bathrooms: 1 No Mist and 2 nr. Full coats of Dulux trade matt emulsion for wet areas, to drylined plasterboard walls (siped and filled, not skim).
- Extent of floor finish beyond kitchen kick board to be agreed.
- Kitchen kick board to be agreed.

Note



Coordination Plan

Electrical layouts are based on MEP Design and quantities. Refer to MEP layouts for switches / sockets in utility cupboards & ones within kitchen cupboards

Services Setting Out

Key

- Double Switch
- Single Switch
- Double Socket
- Single Socket
- Dimmer Switch
- MVHR Boost Switch
- Video Entry & Doorbell ringer
- Rocker Switch
- Media Plate - Living Room
- Media Plate - Master bedroom
- Media Plate - Secondary bedroom
- Stud free zone
- Shaver socket
- Thermostat
- Energy monitor
- Door bell
- Door bell chimes
- Entry phone
- CU shown only in units where it sits outside utility cupboard

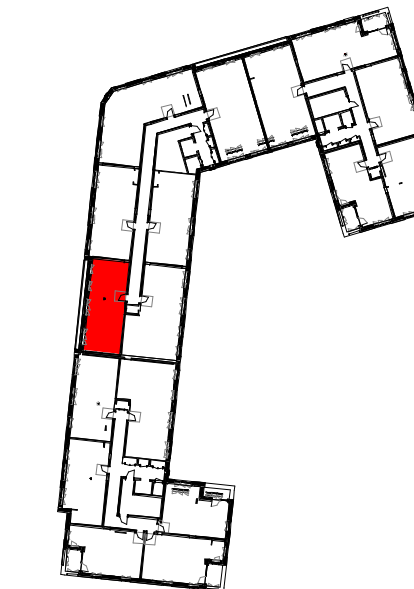
Generally

Sockets and switches required in utility cupboards. Refer to Drawings AVG-MXF-ZZ-DR-J-303000, AVG-MXF-ZZ-DR-J-303001, AVG-MXF-ZZ-DR-J-303002

Copyright HawkinsBrown Architects
No implied licence exists. This drawing should not be used to calculate areas for the purposes of valuation. Do not scale this drawing. All dimensions to be checked on the site by the contractor and such dimensions to be their responsibility. All work must comply with relevant British Standards and Building Regulations requirements. Drawing errors and omissions to be reported to the architect. To be read in conjunction with Architect's specification and other consultant information.

Rev	Description	Date
P1	Issued for Approval	06/09/21
P2	Issued for Coordination	21/12/21
P3	Issued for Coordination	04/03/22
P4	Unit Types Coordination	14/04/22
P5	Issued for Coordination	15/07/22
P6	Updated following Principle Contractor Comments	26/07/22
P7	Utility cupboard door width updated	25/10/22
P8	Unit types updated to Contractor's comment	23/12/22

Name	Unit Type	Tenure	Count
Duplex 01 A	2B4P Duplex M4(2)	PS	1
Duplex 01 B	2B4P Duplex M4(2)	PS	1
Duplex 01 C	2B4P Duplex M4(2)	PS	3
Duplex 02	2B4P Duplex M4(2)	PS	1
Duplex 03	2B4P Duplex M4(2)	PS	1
Duplex 05	2B4P Duplex M4(2)	PS	1
Type 01	1B2P M4(2)	PS	1
Type 02 A	1B2P M4(2)	PS	1
Type 02 B	1B2P M4(2)	PS	2
Type 03 A	1B2P M4(2)	PS	4
Type 03 B	1B2P M4(2)	PS	4
Type 04	1B2P M4(2)	PS	1
Type 05 A	2B4P M4(2)	PS	3
Type 05 B	1B2P M4(2)	PS	4
Type 06 A	1B2P M4(2)	PS	3
Type 06 B	1B2P M4(2)	PS	3
Type 06 C	1B2P M4(2)	PS	1
Type 07 A	1B2P M4(2)	PS	3
Type 07 B	1B2P M4(2)	PS	3
Type 07 C	1B2P M4(2)	PS	1
Type 08 A	1B2P M4(2)	PS	3
Type 08 B	1B2P M4(2)	PS	3
Type 09	1B2P M4(2)	PS	3
Type 10	1B2P M4(2)	PS	3
Type 11	1B2P M4(2)	PS	3
Type 12	2B4P M4(2)	PS	3
Type 13	2B4P M4(2)	PS	6
Type 14	2B4P M4(2)	PS	3
Type 15	1B2P M4(2)	PS	3
Type 17	2B2P M4(2)	PS	1
Type 18	1B2P M4(2)	PS	1
Type 19	2B4P M4(2)	PS	1
Type 20	2B2P M4(2)	INT	1
Type 22	1B2P M4(2)	PS	1
Type 23	1B2P M4(2)	PS	1
Type 24	1B2P M4(2)	PS	1
Type 25	2B4P M4(2)	PS	1
Type 28	2B2P M4(2)	PS	1
WCA Type 01 A	2B2P M4(2)(2a)	PS WCA	1
WCA Type 01 B	2B2P M4(2)(2a)	PS WCA	2
WCA Type 02 A	1B2P M4(2)(2a)	PS WCA	2
WCA Type 02 B	1B2P M4(2)(2a)	PS WCA	1
WCA Type 02 C	1B2P M4(2)(2a)	PS WCA	1
WCA Type 05	1B2P M4(2)(2a)	PS WCA	1
Grand total:	95		



159 St John Street
London EC1V 4QJ

mail@hawkinsbrown.com
hawkinsbrown.com

HawkinsBrown

Project
Agar Grove Phase 1c
Block JKL

Drawing
Unit Type 02

Scale @ A1
As indicated

Date
Sept 2021

Drawn By
CM

Checked By
JW

Job Number
1423-C

Status
S1

Purpose of Issue
Coordination

Drawing No.
AGV-HBA-JKL-ZZ-DR-A-200402

Rev
P8