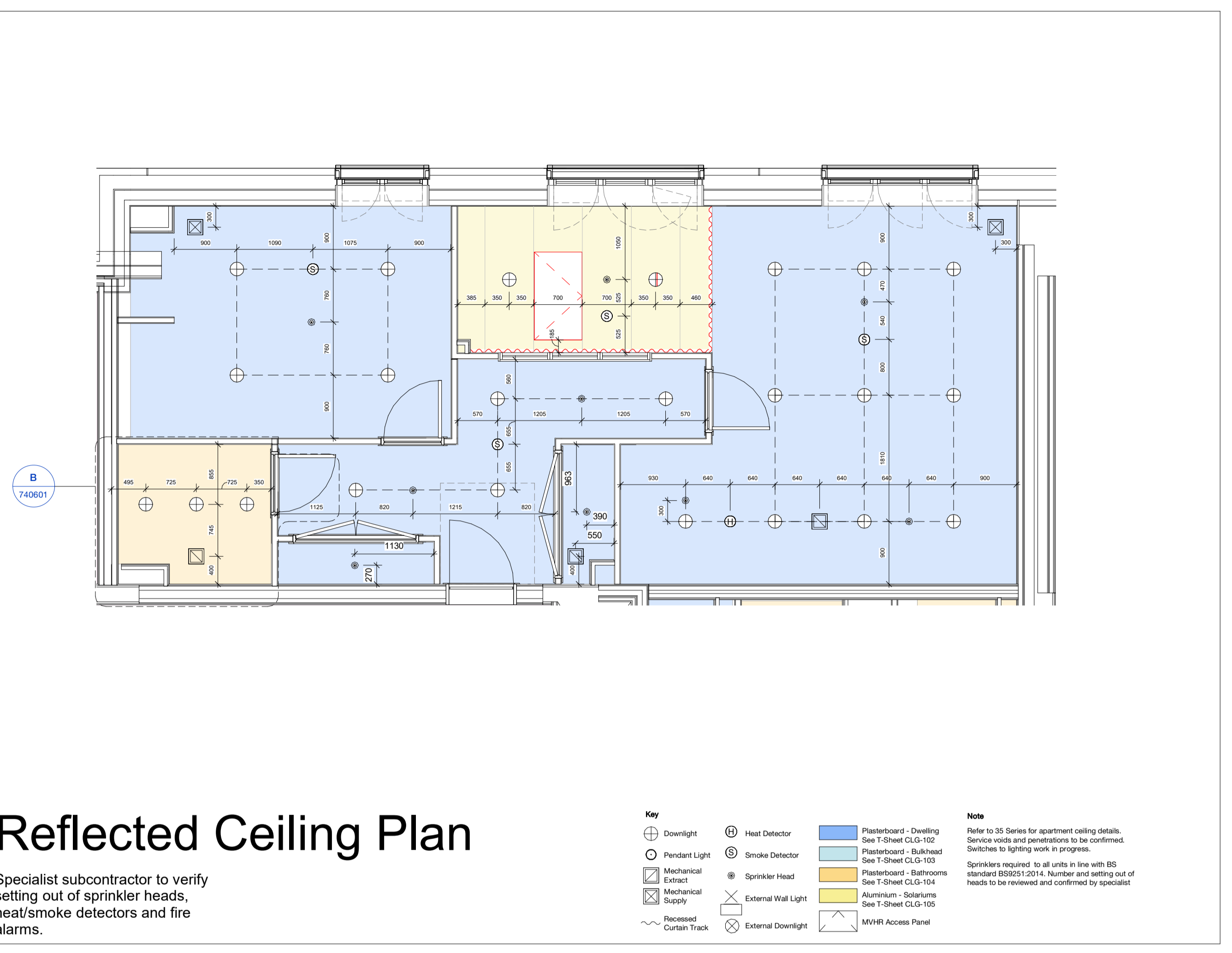


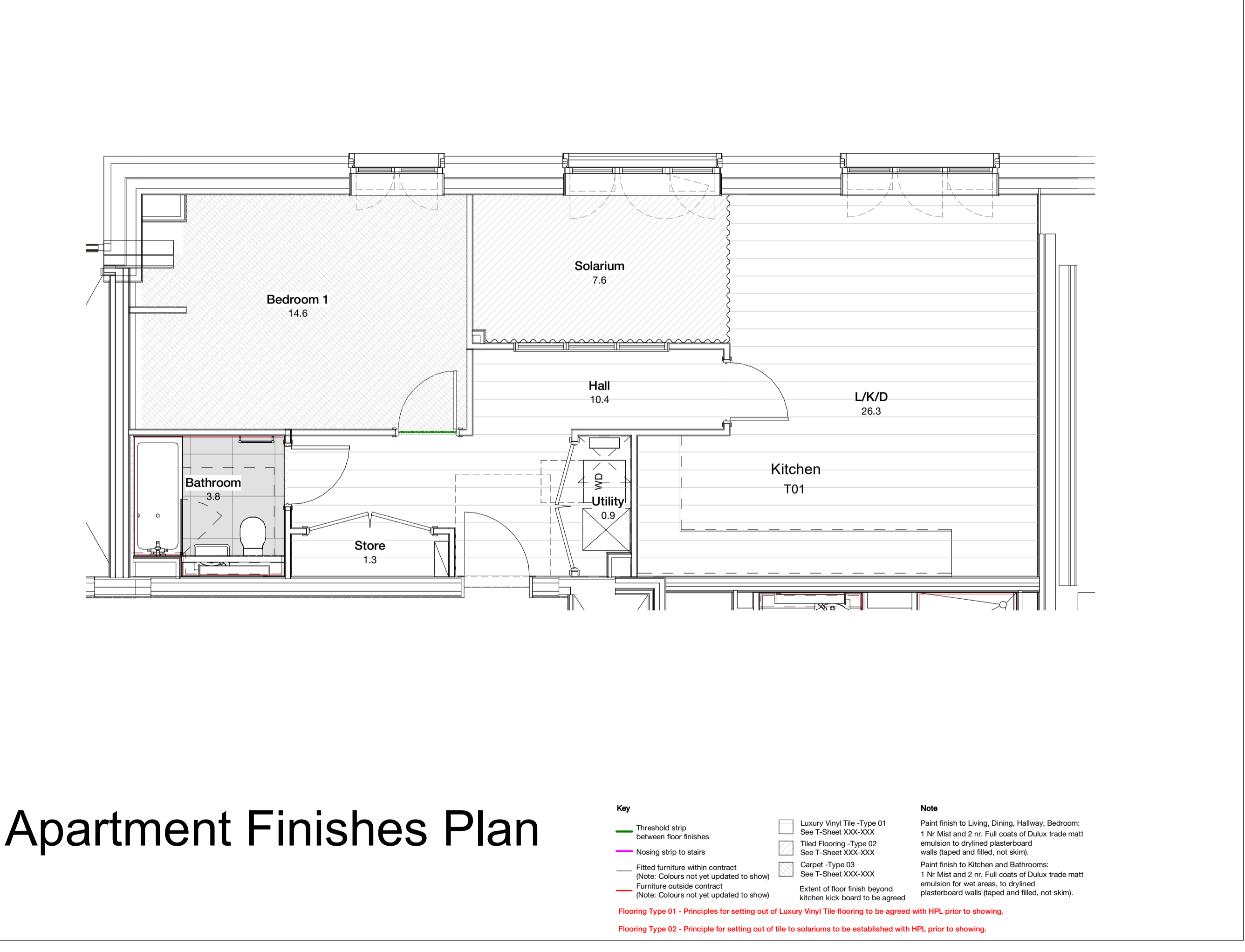
# Internal Wall Setting Out

Refer to 20 Series - General Arrangement for building-wide plans



# Reflected Ceiling Plan

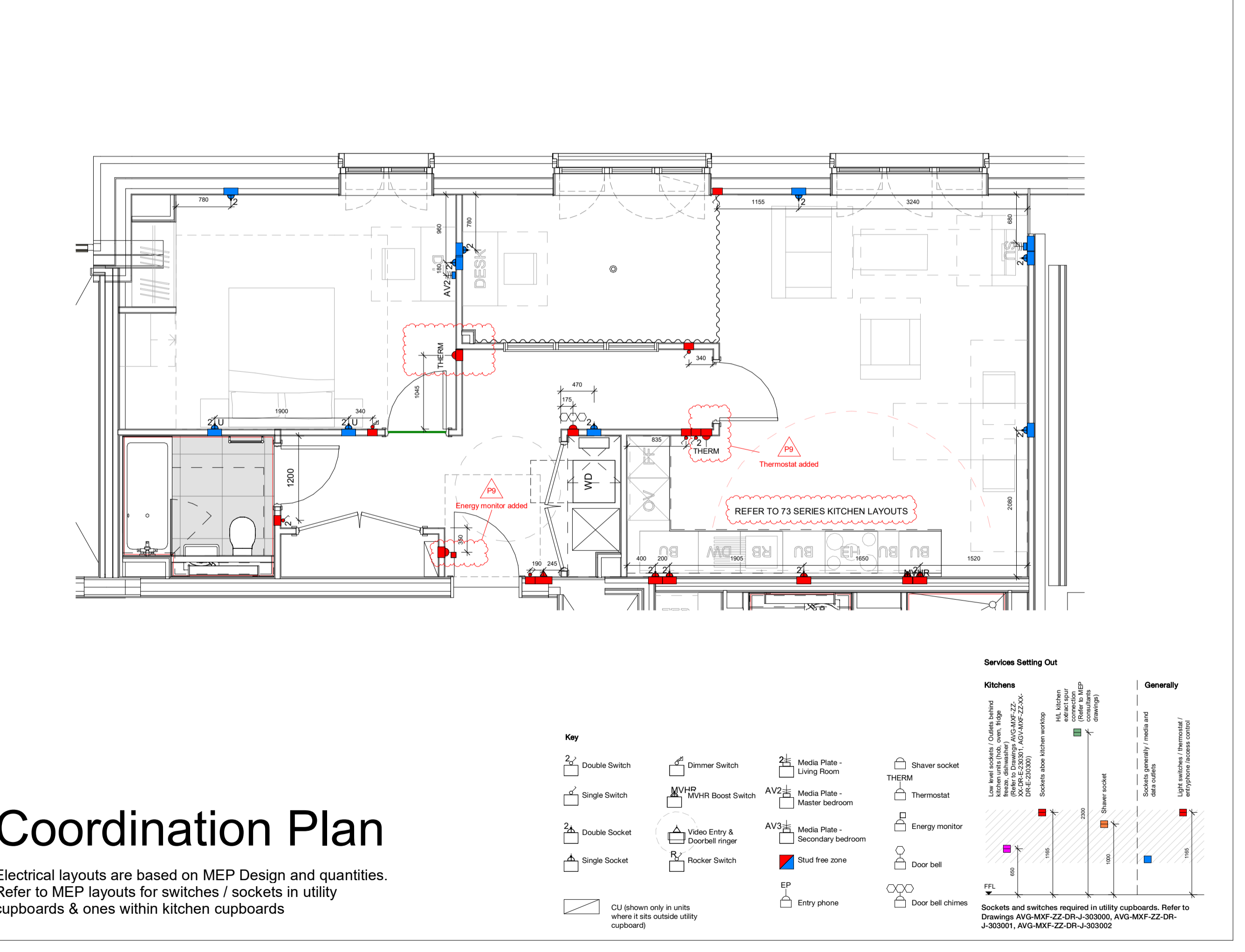
Specialist subcontractor to verify setting out of sprinkler heads, heat/smoke detectors and fire alarms.



# Apartment Finishes Plan

**Key**  
 - Threshold strip between floor finishes  
 - Fitted furniture within contract (Note: Colours not yet updated to show)  
 - Furniture outside contract (Note: Colours not yet updated to show)  
 - Flooring Type 01 - Principles for setting out of Luxury Vinyl Tile flooring to be agreed with HPL prior to showing.  
 - Flooring Type 02 - Principle for setting out of tile to solariums to be established with HPL prior to showing.

**Note**  
 Paint finish to Living, Dining, Hallway, Bedroom: 1 No Mist and 2 nr. Full coats of Dulux trade matt emulsion to drylined plasterboard walls (siped and filled, not skim).  
 Paint finish to Kitchens and Bathrooms: 1 No Mist and 2 nr. Full coats of Dulux trade matt emulsion for wet areas, to drylined plasterboard walls (siped and filled, not skim).  
 Carpet - Type 03  
 See T-Sheet XXX-XXX  
 See T-Sheet XXX-XXX  
 Extent of floor finish beyond kitchen kick board to be agreed



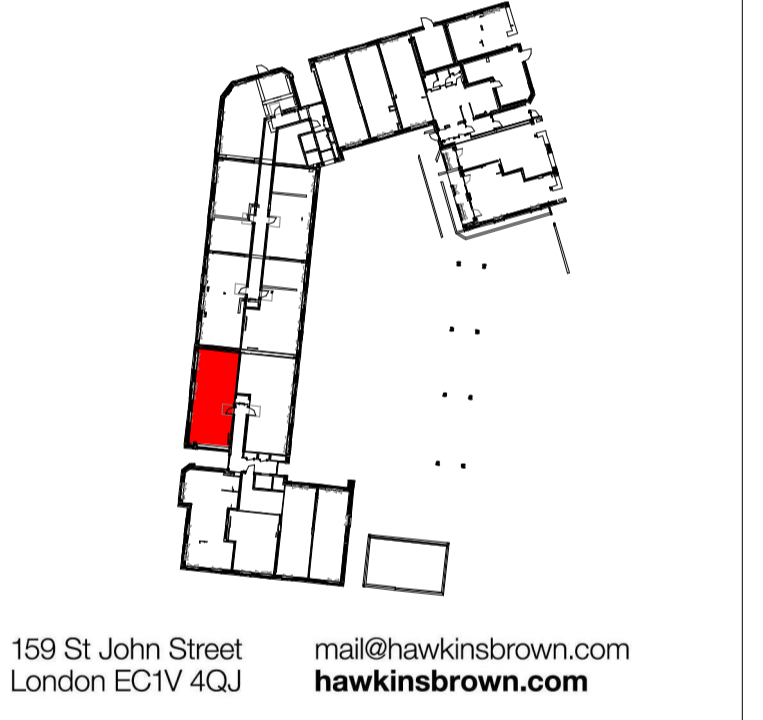
# Coordination Plan

Electrical layouts are based on MEP Design and quantities. Refer to MEP layouts for switches / sockets in utility cupboards & ones within kitchen cupboards

Copyright Hawkins\Brown Architects  
 No implied licence exists. This drawing should not be used to calculate areas for the purposes of valuation. Do not scale this drawing. All dimensions to be checked on the site by the contractor and such dimensions to be their responsibility. All work must comply with relevant British Standards and Building Regulations requirements. Drawing errors and omissions to be reported to the architect. To be read in conjunction with Architect's specification and other consultant information.

Rev	Description	Date
P1	Issued for Approval	06/09/21
P2	Issued for Coordination	21/12/21
P3	Issued for Coordination	04/03/22
P4	Unit Types Coordination	14/04/22
P5	Issued for Coordination	15/07/22
P6	Updated following Principle Contractor Comments	26/07/22
P7	Utility cupboard door width updated	25/10/22
P8	Updated to MEP comments	13/12/22
P9	Unit types updated to Contractor's comment	23/12/22

Name	Unit Type	Tenure	Count
Duplex 01 A	2B4P Duplex M4(2)	PS	1
Duplex 01 B	2B4P Duplex M4(2)	PS	1
Duplex 01 C	2B4P Duplex M4(2)	PS	3
Duplex 02	2B4P Duplex M4(2)	PS	1
Duplex 03	2B4P Duplex M4(2)	PS	1
Duplex 05	2B4P Duplex M4(2)	PS	1
Type 01	1B2P M4(2)	PS	1
Type 02 A	1B2P M4(2)	PS	1
Type 02 B	1B2P M4(2)	PS	2
Type 03 A	1B2P M4(2)	PS	4
Type 03 B	1B2P M4(2)	PS	4
Type 04	1B2P M4(2)	PS	1
Type 05 A	2B4P M4(2)	PS	3
Type 05 B	2B4P M4(2)	PS	4
Type 06 A	1B2P M4(2)	PS	3
Type 06 B	1B2P M4(2)	PS	3
Type 06 C	1B2P M4(2)	PS	1
Type 07 A	1B2P M4(2)	PS	1
Type 07 B	1B2P M4(2)	PS	3
Type 07 C	1B2P M4(2)	PS	1
Type 08 A	1B2P M4(2)	PS	3
Type 08 B	1B2P M4(2)	PS	3
Type 09	1B2P M4(2)	PS	3
Type 10	1B2P M4(2)	PS	6
Type 11	1B2P M4(2)	PS	3
Type 12	2B4P M4(2)	PS	3
Type 13	2B4P M4(2)	PS	6
Type 14	2B4P M4(2)	PS	3
Type 15	1B2P M4(2)	PS	3
Type 17	2B2P M4(2)	PS	1
Type 18	1B2P M4(2)	PS	1
Type 19	2B4P M4(2)	PS	1
Type 20	2B2P M4(2)	INT	1
Type 22	1B2P M4(2)	PS	1
Type 23	1B2P M4(2)	PS	1
Type 24	1B2P M4(2)	PS	1
Type 25	2B4P M4(2)	PS	1
Type 28	2B2P M4(2)	PS	1
WCA Type 01 A	2B2P M4(2)(2A)	PS WCA	1
WCA Type 01 B	2B2P M4(2)(2A)	PS WCA	2
WCA Type 02 A	1B2P M4(2)(2A)	PS WCA	2
WCA Type 02 B	1B2P M4(2)(2A)	PS WCA	1
WCA Type 02 C	1B2P M4(2)(2A)	PS WCA	1
WCA Type 05	1B2P M4(2)(2A)	PS WCA	1
Grand total:	95		



159 St John Street  
 London EC1V 4JQ  
 mail@hawkinsbrown.com  
 hawkinsbrown.com

# Hawkins\Brown

Project  
 Agar Grove Phase 1c  
 Block JKL

Drawing  
 Unit Type 01

Scale @ A1  
 As indicated

Date  
 Sept 2021

Drawn By  
 CM

Checked By  
 JW

Job Number  
 1423-C

Status  
 S1

Purpose of Issue  
 Coordination

Drawing No.  
 AGV-HBA-JKL-ZZ-DR-A-200401

Rev  
 P9