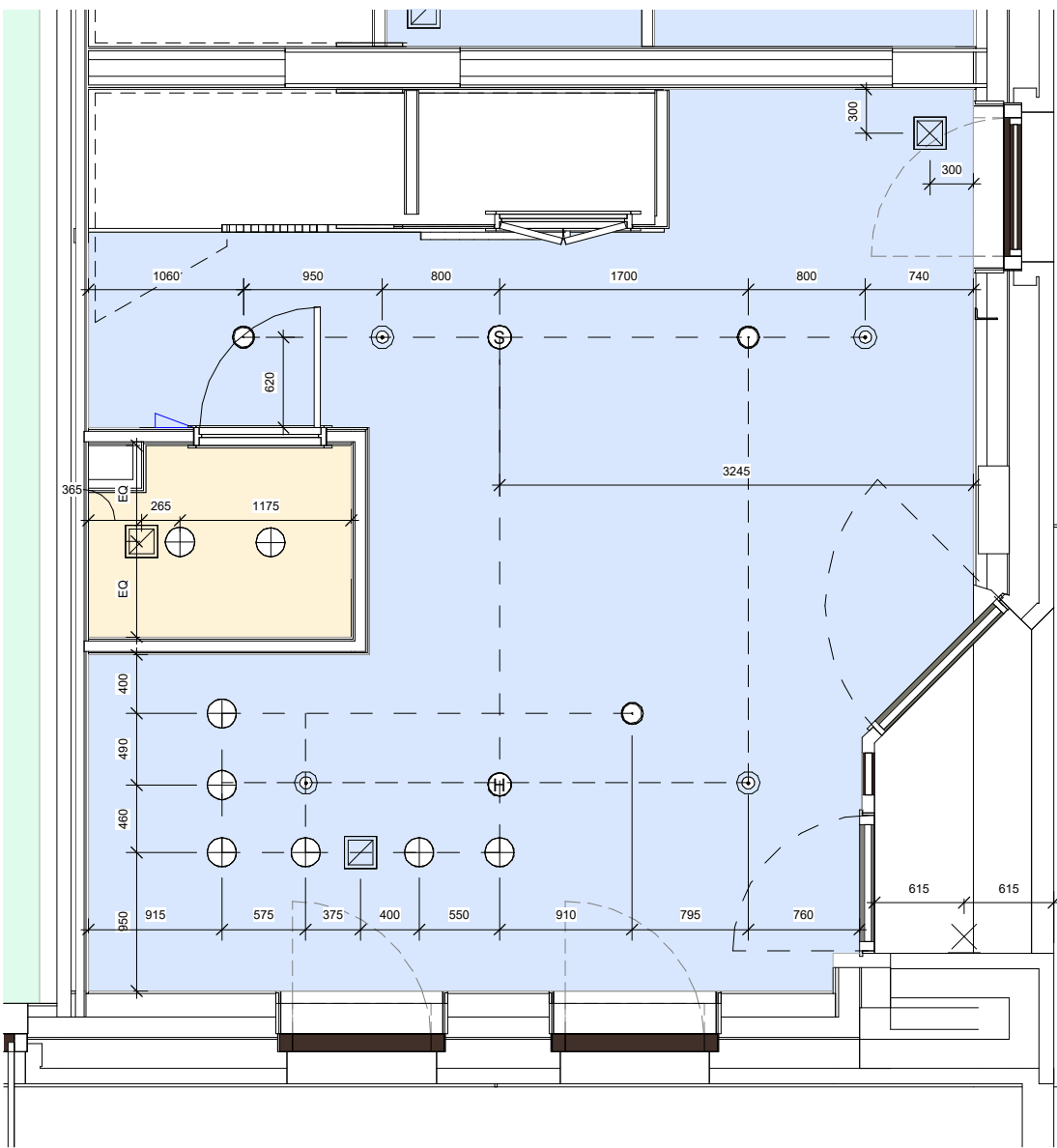


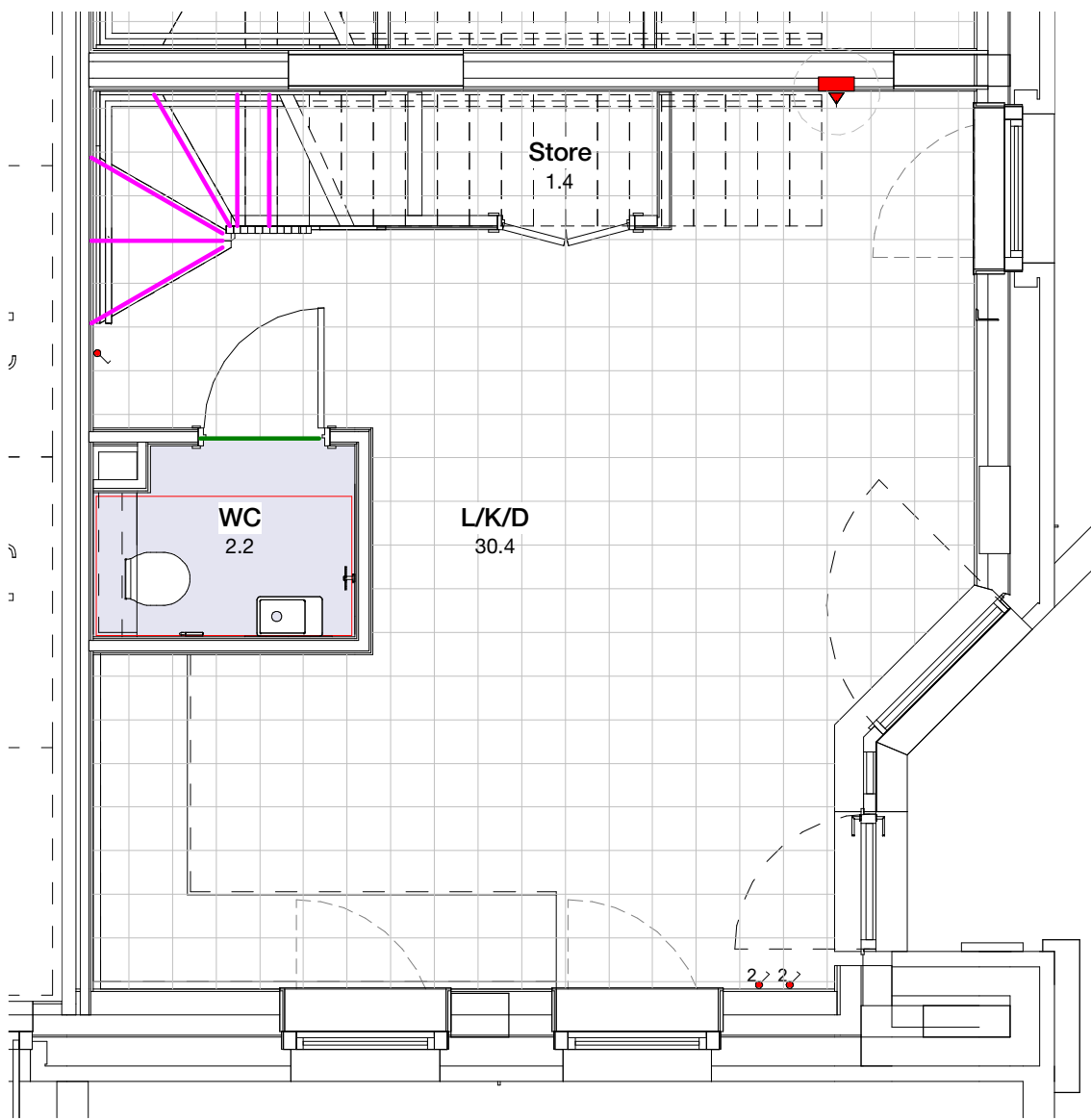
Internal Wall Setting Out

Refer to 20 Series - General Arrangement for building-wide plans

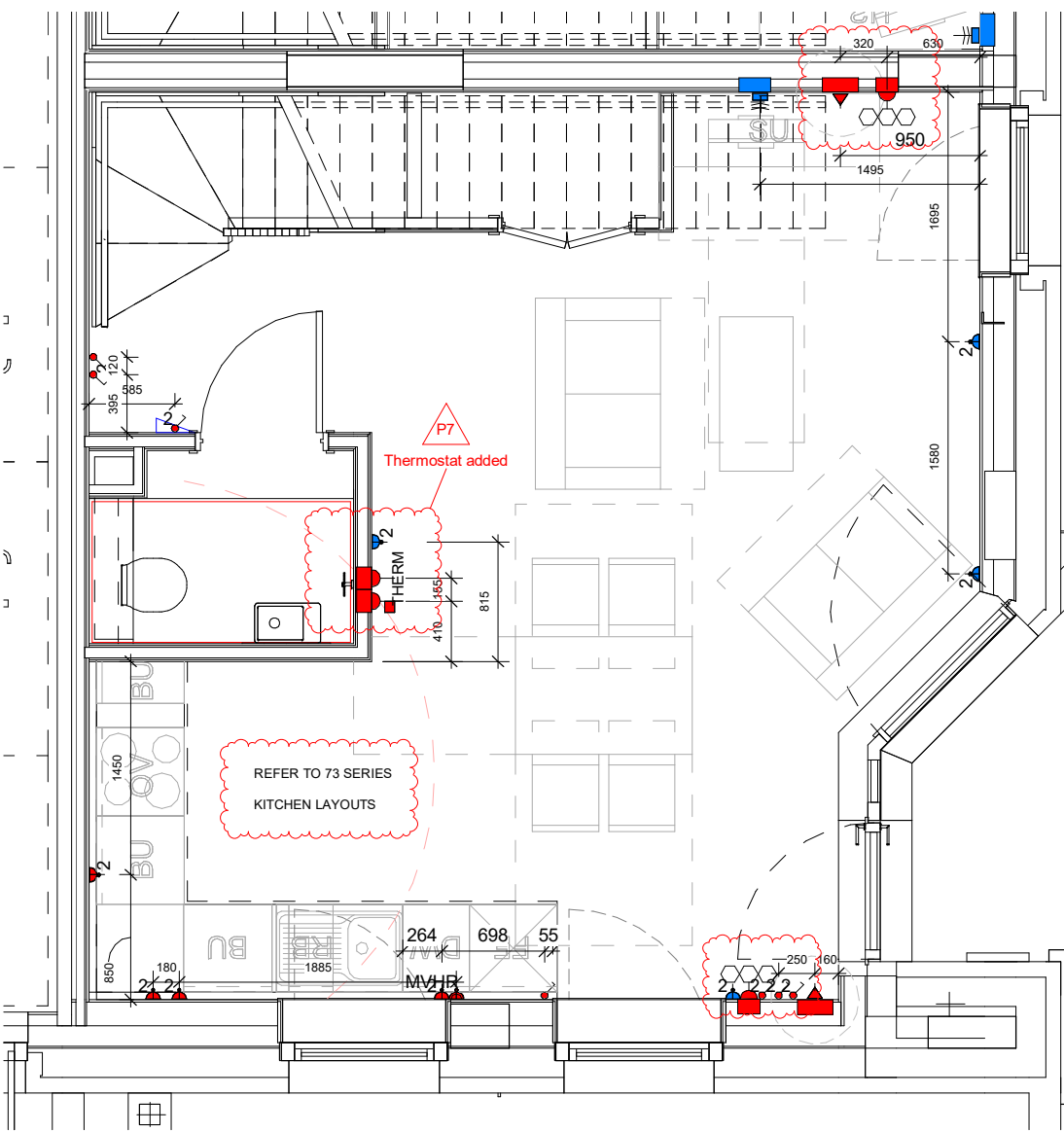


Reflected Ceiling Plan

Specialist subcontractor to verify setting out of sprinkler heads, heat/smoke detectors and fire alarms.



Apartment Finishes Plan



Coordination Plan

Electrical layouts are based on MEP Design and quantities. Refer to MEP layouts for switches / sockets in utility cupboards & ones within kitchen cupboards

Copyright Hawkins\Brown Architects
No implied licence exists. This drawing should not be used to calculate areas for the purposes of valuation. Do not scale this drawing. All dimensions to be checked on the site by the contractor and such dimensions to be their responsibility. All work must comply with relevant British Standards and Building Regulations requirements. Drawing errors and omissions to be reported to the architect. To be read in conjunction with Architect's specification and other consultant information.

| Rev | Description | Date |
|-----|-------------------------------------|----------|
| P1 | Issued for Approval | 06/09/21 |
| P2 | Issued for Coordination | 21/12/21 |
| P3 | Comments on Unit Types Coordination | 04/03/22 |
| P4 | Unit Types Coordination | 14/04/22 |
| P5 | Updated following Contractor Review | 27/06/22 |
| P6 | Updated following Contractor Review | 22/08/22 |
| P7 | Updated to Contractor's comments | 23/12/22 |

| Unit Types - Block I | | | |
|----------------------|-------------------------|--------|-------|
| Name | Unit Type | Tenure | Count |
| Duplex Type I.01 | 3B5P M4(3)(2)(b) Duplex | SR | 1 |
| Duplex Type I.02 | 2B4P M4(2) Duplex | INT | 1 |
| Duplex Type I.03 | 2B4P M4(2) Duplex | INT | 1 |
| Type I.01 | 1B2P M4(3)(2)(b) | SR | 1 |
| Type I.02 | 1B2P M4(3)(2)(b) | SR | 1 |
| Type I.03 | 1B2P M4(2) | SR | 1 |
| Type I.04 | 1B2P M4(2) | SR | 1 |
| Type I.05 | 2B4P M4(2) | INT | 5 |
| Type I.06 | 1B2P M4(2) | INT | 3 |
| Type I.07 | 2B4P M4(2) | INT | 2 |
| Type I.08 | 1B2P M4(2) | INT | 2 |
| Type I.09 | 1B2P M4(2) | INT | 2 |
| Type I.10 | 2B3P M4(2) | INT | 2 |
| Type I.10 A | 2B3P M4(2) | INT | 1 |
| Type I.10 B | 2B3P M4(2) | INT | 1 |
| Type I.11 | 1B2P M4(2) | INT | 2 |
| Type I.12 | 1B2P M4(2) | INT | 4 |
| Type I.13 | 1B1P M4(2) | INT | 1 |
| Type I.14 | 2B4P M4(2) | INT | 1 |
| Type I.15 | 1B2P M4(2) | INT | 1 |
| Type I.16 | 1B2P M4(2) | INT | 1 |
| Type I.16 B | 1B2P M4(2) | INT | 1 |
| Type I.17 | 1B2P M4(2) | INT | 2 |
| Type I.18 | 1B2P M4(2) | INT | 2 |
| Grand total: 40 | | | |



159 St John Street
London EC1V 4JQ

mail@hawkinsbrown.com
hawkinsbrown.com

Hawkins\Brown

Project
Agar Grove Phase 1c
Block I

Drawing
Duplex Type 03 1/2

Scale @ A1
As indicated

Date
Sept 2021

Drawn By
CM

Checked By
JW

Job Number
1423-C

Status
S1

Purpose of Issue
Coordination

Drawing No.
AGV-HBA-I-ZZ-DR-A-200444

Rev
P7