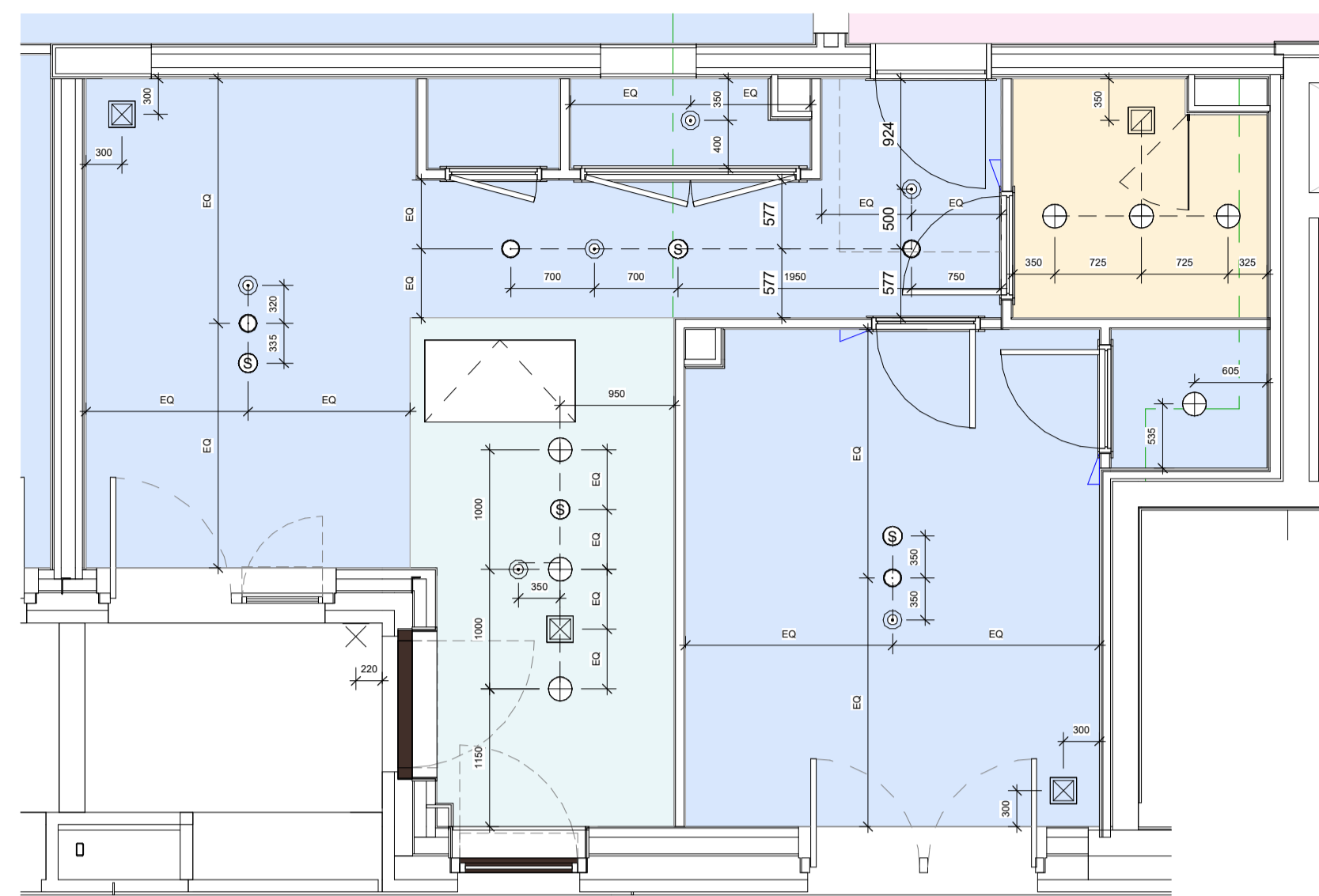


# Internal Wall Setting Out

Refer to 20 Series - General Arrangement for building-wide plans



# Reflected Ceiling Plan

Specialist subcontractor to verify setting out of sprinkler heads, heat/smoke detectors and fire alarms.

- Key**
- Downlight
  - Pendant Light
  - Mechanical Exhaust
  - Mechanical Supply
  - Recessed Curtain Track
  - Heat Detector
  - Smoke Detector
  - Sprinkler Head
  - External Wall Light
  - External Downlight
  - MVR Access Panel
  - Plasterboard - Dwelling
  - Plasterboard - Bulkhead
  - Plasterboard - Bathrooms
  - Aluminium - Staircase
- Note**
- Refer to BS Series for apartment ceiling details. Service voids and penetrations to be confirmed. Switches to lighting work in progress. Sprinklers required to all units in line with BS standard BS9251:2014. Number and setting out of heads to be reviewed and confirmed by specialist

Copyright Hawkins\Brown Architects  
No implied licence exists. This drawing should not be used to calculate areas for the purposes of valuation. Do not scale this drawing. All dimensions to be checked on the site by the contractor and such dimensions to be their responsibility. All work must comply with relevant British Standards and Building Regulations requirements. Drawing errors and omissions to be reported to the architect. To be read in conjunction with Architect's specification and other consultant information.

Rev	Description	Date
P1	Issued for Approval	06/09/21
P2	Issued for Coordination	21/12/21
P3	Comments on Unit Types Coordination	04/03/22
P4	Unit Types Coordination	14/04/22
P5	Updated following Contractor Review	27/06/22
P6	Updated following Contractor Review	22/08/22
P7	Utility cupboard door width updated	19/10/22
P8	Updated to IIF comments	13/12/22
P9	Updated to Contractor's comments	23/12/22

Unit Types - Block I			
Name	Unit Type	Tenure	Count

Duplex Type I.01	3B5P M4(3)(2)(b) Duplex	SR	1
Duplex Type I.02	2B4P M4(2) Duplex	INT	1
Duplex Type I.03	2B4P M4(2) Duplex	INT	1
Type I.01	1B2P M4(3)(2)(b)	SR	1
Type I.02	1B2P M4(3)(2)(b)	SR	1
Type I.03	1B2P M4(2)	SR	1
Type I.04	1B2P M4(2)	SR	1
Type I.05	2B4P M4(2)	INT	5
Type I.06	1B2P M4(2)	INT	3
Type I.07	2B4P M4(2)	INT	2
Type I.08	1B2P M4(2)	INT	2
Type I.09	1B2P M4(2)	INT	2
Type I.10	2B3P M4(2)	INT	2
Type I.10 A	2B3P M4(2)	INT	1
Type I.10 B	2B3P M4(2)	INT	1
Type I.11	1B2P M4(2)	INT	2
Type I.12	1B2P M4(2)	INT	4
Type I.13	1B1P M4(2)	INT	1
Type I.14	2B4P M4(2)	INT	1
Type I.15	1B2P M4(2)	INT	1
Type I.16	1B2P M4(2)	INT	1
Type I.16 B	1B2P M4(2)	INT	1
Type I.17	1B2P M4(2)	INT	2
Type I.18	1B2P M4(2)	INT	2
Grand total:			40



159 St John Street  
London EC1V 4QJ  
mail@hawkinsbrown.com  
hawkinsbrown.com

# Hawkins\Brown

Project  
Agar Grove Phase 1c  
Block I

Drawing  
Unit Type 15

Scale @ A1  
As indicated

Date  
Sept 2021

Drawn By  
CM

Checked By  
JW

Job Number  
1423-C

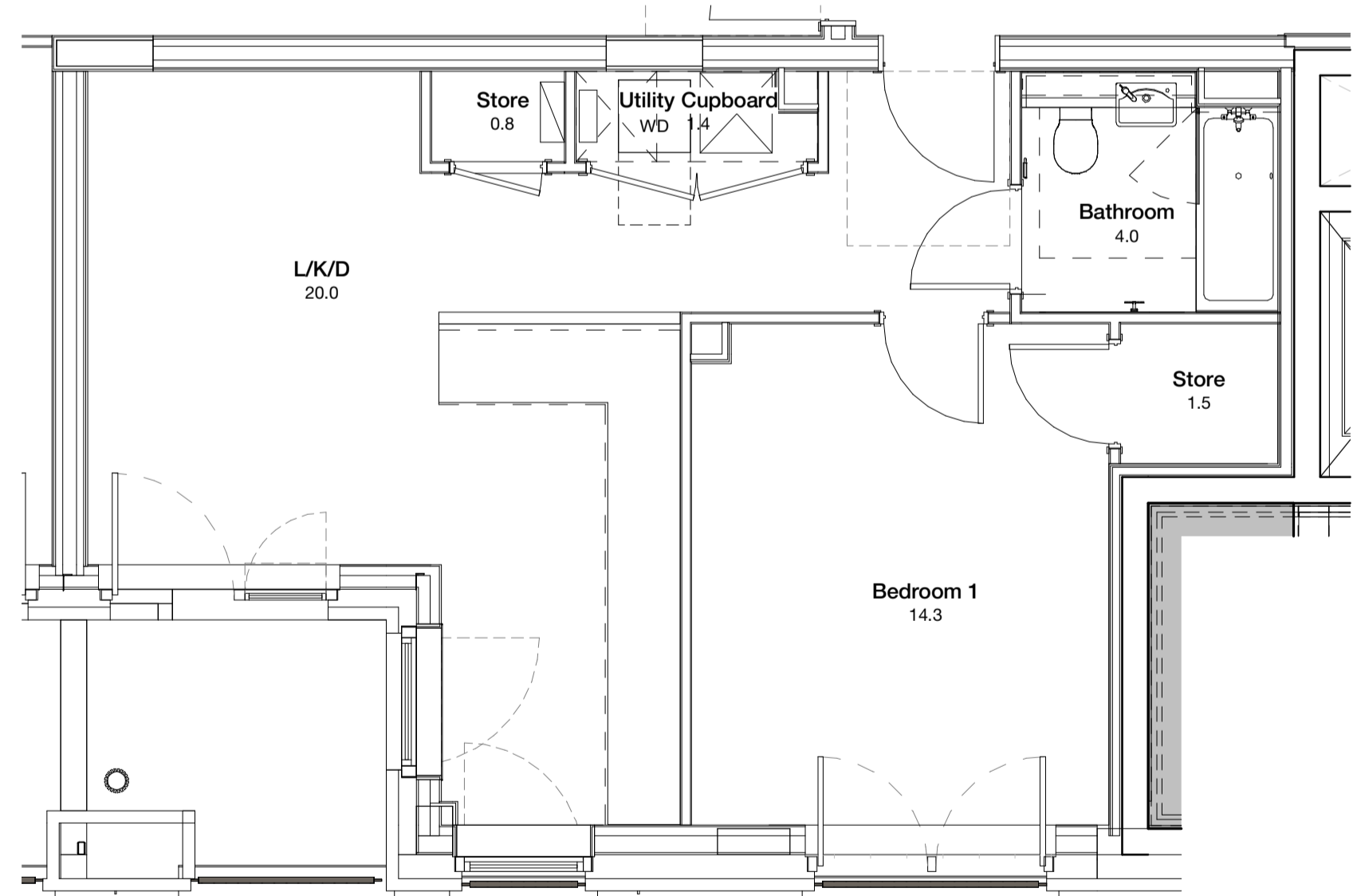
Status  
S1

Purpose of Issue  
Coordination

Drawing No.  
AGV-HBA-I-ZZ-DR-A-200415

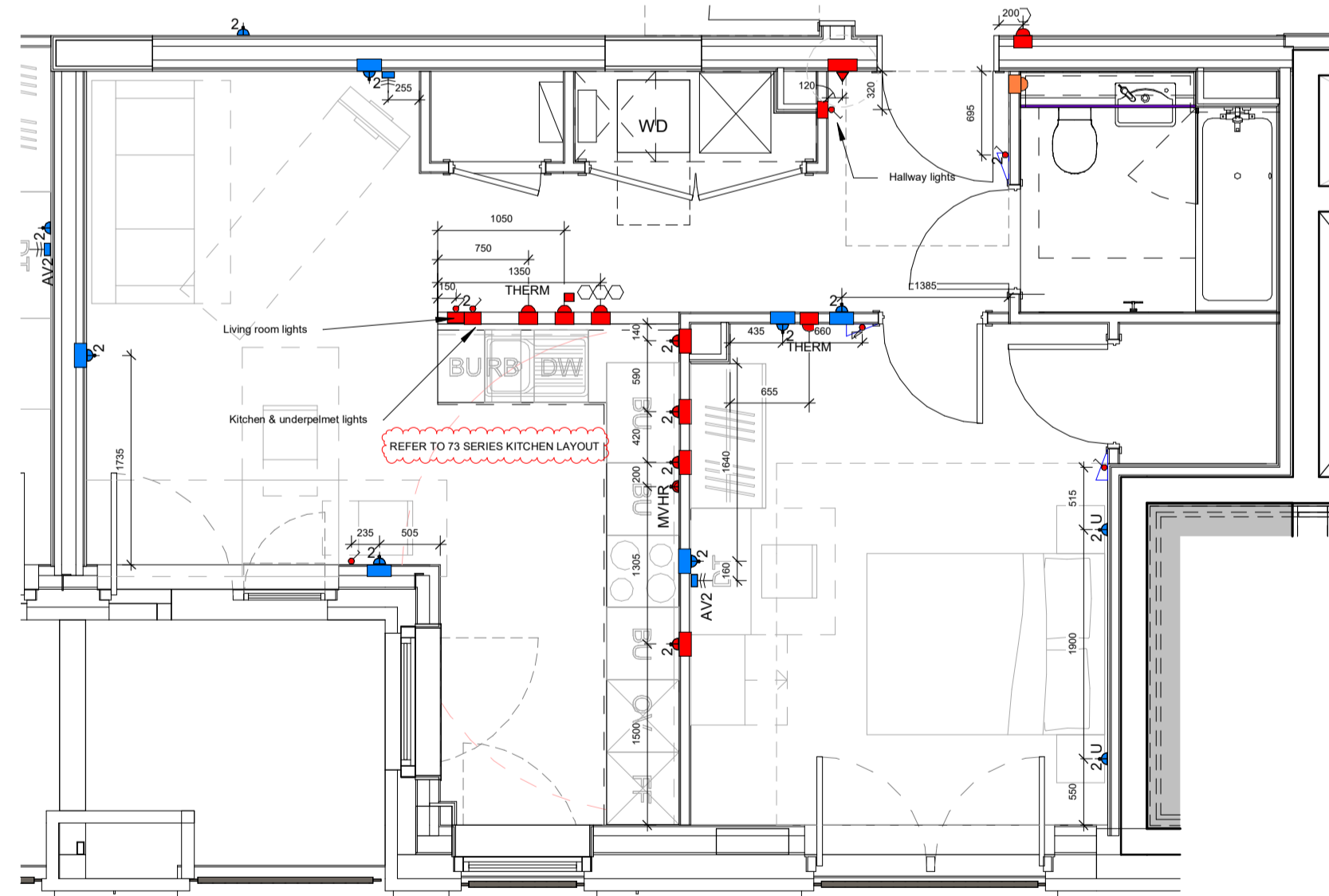
Rev  
P9

# Apartment Finishes Plan



# Apartment Finishes Plan

- Key**
- Threshold strip between floor finishes
  - Nosing strip to stairs
  - Vinyl Flooring Type 01
  - Vinyl Flooring Type 02
  - Floor finish in kitchen to extend below base board
- Note**
- Paint finish to Living, Dining, Hallway, Bedroom: 1 No Matt and 2 No. Full coats of Dulux trade matt emulsion to drylined plasterboard walls (spaced and filled, not skim).
- Paint finish to Kitchen and Bathroom: 1 No Matt and 2 No. Full coats of Dulux trade matt emulsion for wet areas, to drylined plasterboard walls (spaced and filled, not skim).



# Coordination Plan

Electrical layouts are based on MEP Design and quantities. Refer to MEP layouts for switches / sockets in utility cupboards & ones within kitchen cupboards

- Key**
- Double Switch
  - Single Switch
  - Double Socket
  - Single Socket
  - Dimmer Switch
  - MVR Boost Switch
  - Video Entry
  - Rocker Switch
  - Media Plate - Living Room
  - Media Plate - Master bedroom
  - Media Plate - Secondary bedroom
  - Stud free zone
  - Entry phone
  - Shaver socket
  - Thermostat
  - Energy monitor
  - Door bell
  - Door bell chimes
  - Passive infrared sensor
- Services Setting Out**
- Kitchens**
- Lower level sockets, outlets, switches, switches to lighting work in progress. Refer to IIF comments.
- Generally**
- Refer to IIF comments for any specific requirements.