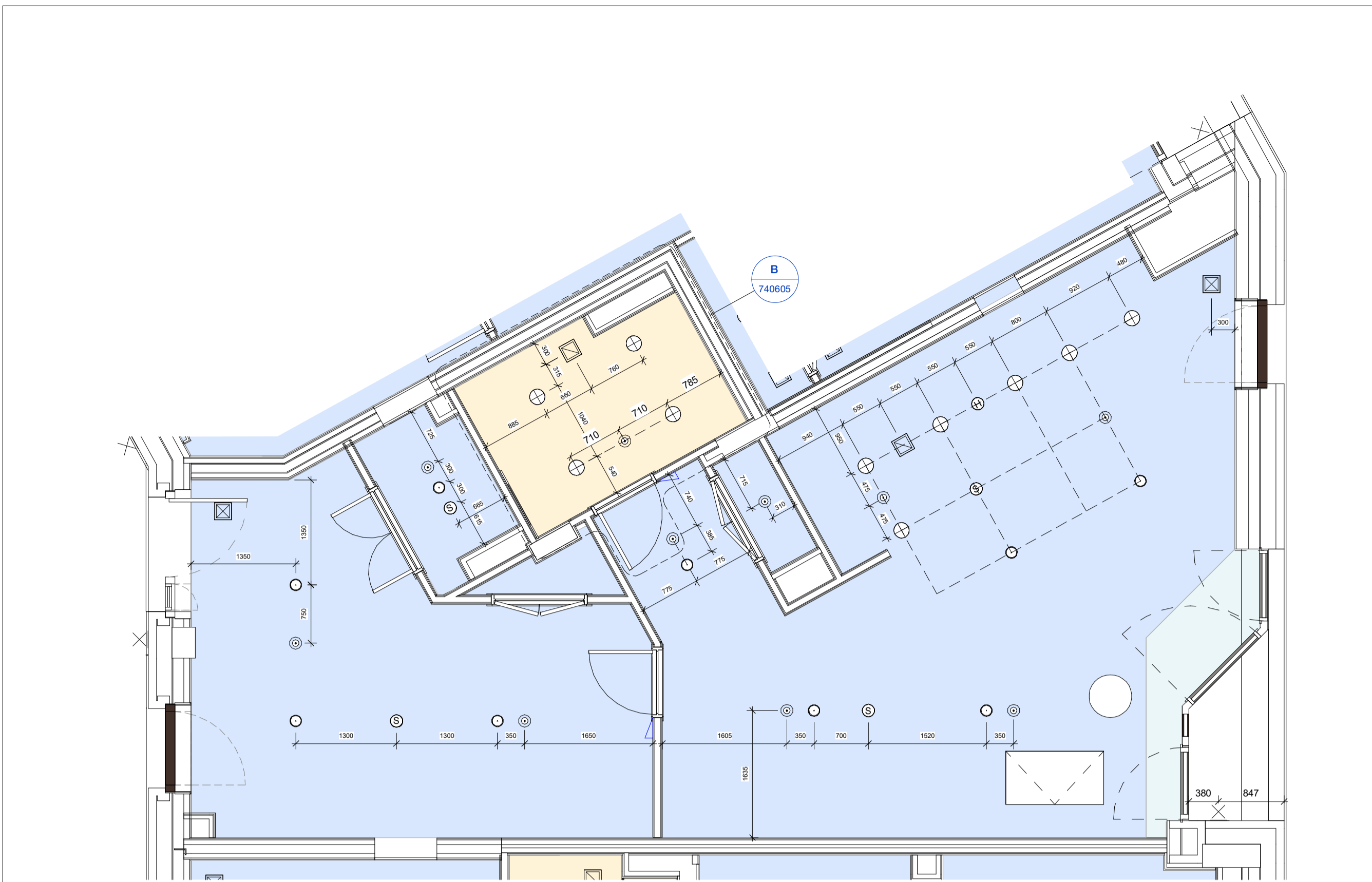


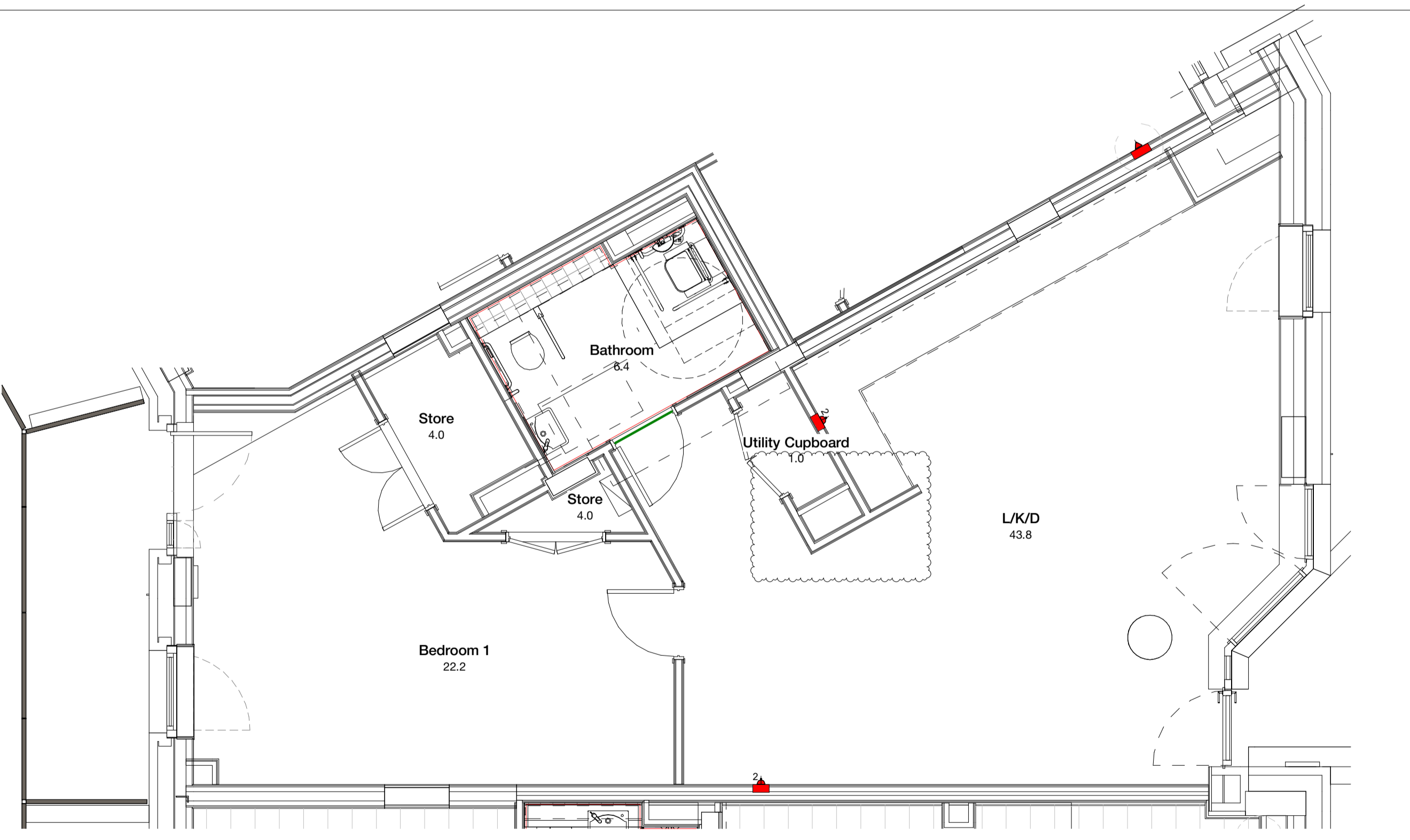
Internal Wall Setting Out

Refer to 20 Series - General Arrangement for building-wide plans



Reflected Ceiling Plan

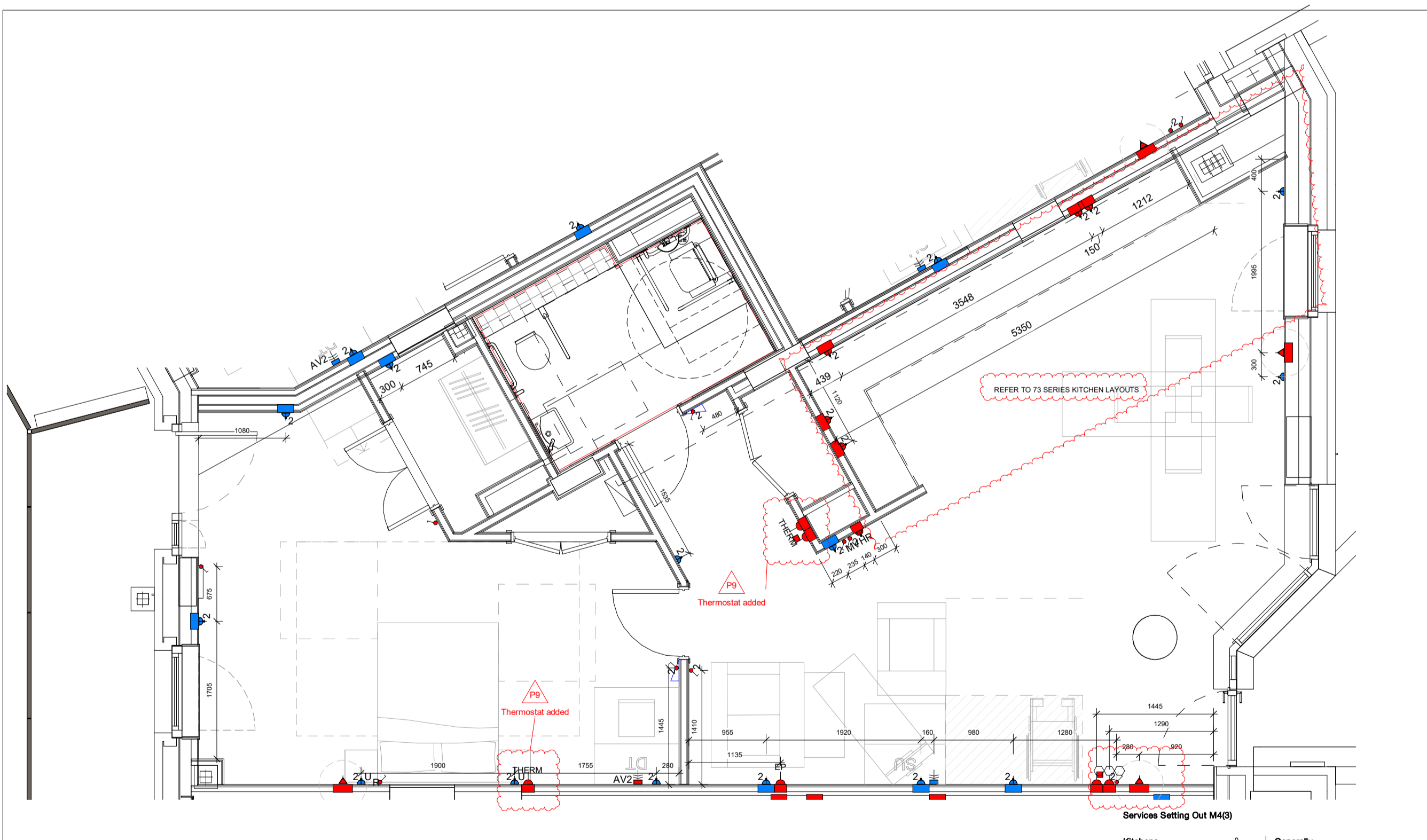
Specialist subcontractor to verify setting out of sprinkler heads, heat/smoke detectors and fire alarms.



Apartment Finishes Plan

Key
 - Threshold strip between floor finishes
 - Nosing strip to stairs
 - Vinyl Flooring Type 01
 - Vinyl Flooring Type 02
 - Floor finish in kitchen to extend below base board

Note
 Paint finish to Living, Dining, Hallway, Bedroom: 1 No Mist and 2 No. Full coats of Dulux trade matt emulsion to drylined plasterboard walls (spaced and filled, not skim).
 Paint finish to Kitchen and Bathroom: 1 No Mist and 2 No. Full coats of Dulux trade matt emulsion for wet areas, to drylined plasterboard walls (spaced and filled, not skim).



Coordination Plan

Electrical layouts are based on MEP Design and quantities. Refer to MEP layouts for switches / sockets in utility cupboards & ones within kitchen cupboards

Sockets and switches required in utility cupboards. Refer to Drawings AVG-MXF-ZZ-DR-J-303000, AVG-MXF-ZZ-DR-J-303001, AVG-MXF-ZZ-DR-J-303002

Copyright Hawkins\Brown Architects
 No implied licence exists. This drawing should not be used to calculate areas for the purposes of valuation. Do not scale this drawing. All dimensions to be checked on the site by the contractor and such dimensions to be their responsibility. All work must comply with relevant British Standards and Building Regulations requirements. Drawing errors and omissions to be reported to the architect. To be read in conjunction with Architect's specification and other consultant information.

Rev	Description	Date
P1	Issued for Coordination	23/04/21
P2	Issued for Approval	06/09/21
P3	Issued for Coordination	21/12/21
P4	Comments on Unit Types Coordination	04/03/22
P5	Unit Types Coordination	14/04/22
P6	Updated following Contractor Review	27/06/22
P7	Updated following Contractor Review	22/08/22
P8	Updated to MF comments	13/12/22
P9	Updated to Contractor's comments	23/12/22
P10	Partition extended to box out kitchen	17/03/23

Unit Types - Block 1			
Name	Unit Type	Tenure	Count
Duplex Type I.01	3BSP M4(3)(2)(b) Duplex	SR	1
Duplex Type I.02	2B4P M4(2) Duplex	INT	1
Duplex Type I.03	2B4P M4(2) Duplex	INT	1
Type I.01	1B2P M4(3)(2)(b)	SR	1
Type I.02	1B2P M4(3)(2)(b)	SR	1
Type I.03	1B2P M4(2)	SR	1
Type I.04	1B2P M4(2)	SR	1
Type I.05	2B4P M4(2)	INT	5
Type I.06	1B2P M4(2)	INT	3
Type I.07	2B4P M4(2)	INT	2
Type I.08	1B2P M4(2)	INT	2
Type I.09	1B2P M4(2)	INT	2
Type I.10	2B3P M4(2)	INT	2
Type I.10 A	2B3P M4(2)	INT	1
Type I.10 B	2B3P M4(2)	INT	1
Type I.11	1B2P M4(2)	INT	2
Type I.12	1B2P M4(2)	INT	4
Type I.13	1B1P M4(2)	INT	1
Type I.14	2B4P M4(2)	INT	1
Type I.15	1B2P M4(2)	INT	1
Type I.16	1B2P M4(2)	INT	1
Type I.16 B	1B2P M4(2)	INT	1
Type I.17	1B2P M4(2)	INT	2
Type I.18	1B2P M4(2)	INT	2
Unit Type 12	Terrace		1
Grand total:			41



159 St John Street
 London EC1V 4JQ
 mail@hawkinsbrown.com
 hawkinsbrown.com



Project
 Agar Grove Phase 1c
 Block 1

Drawing
 Unit Type 02 (SR WCA)

Scale @ A1
 As indicated

Date
 Sept 2021

Drawn By
 CM

Checked By
 JW

Job Number
 1423-C

Status
 S1

Purpose of Issue
 Coordination

Drawing No.
 AGV-HBA-I-ZZ-DR-A-200401

Rev
 P10