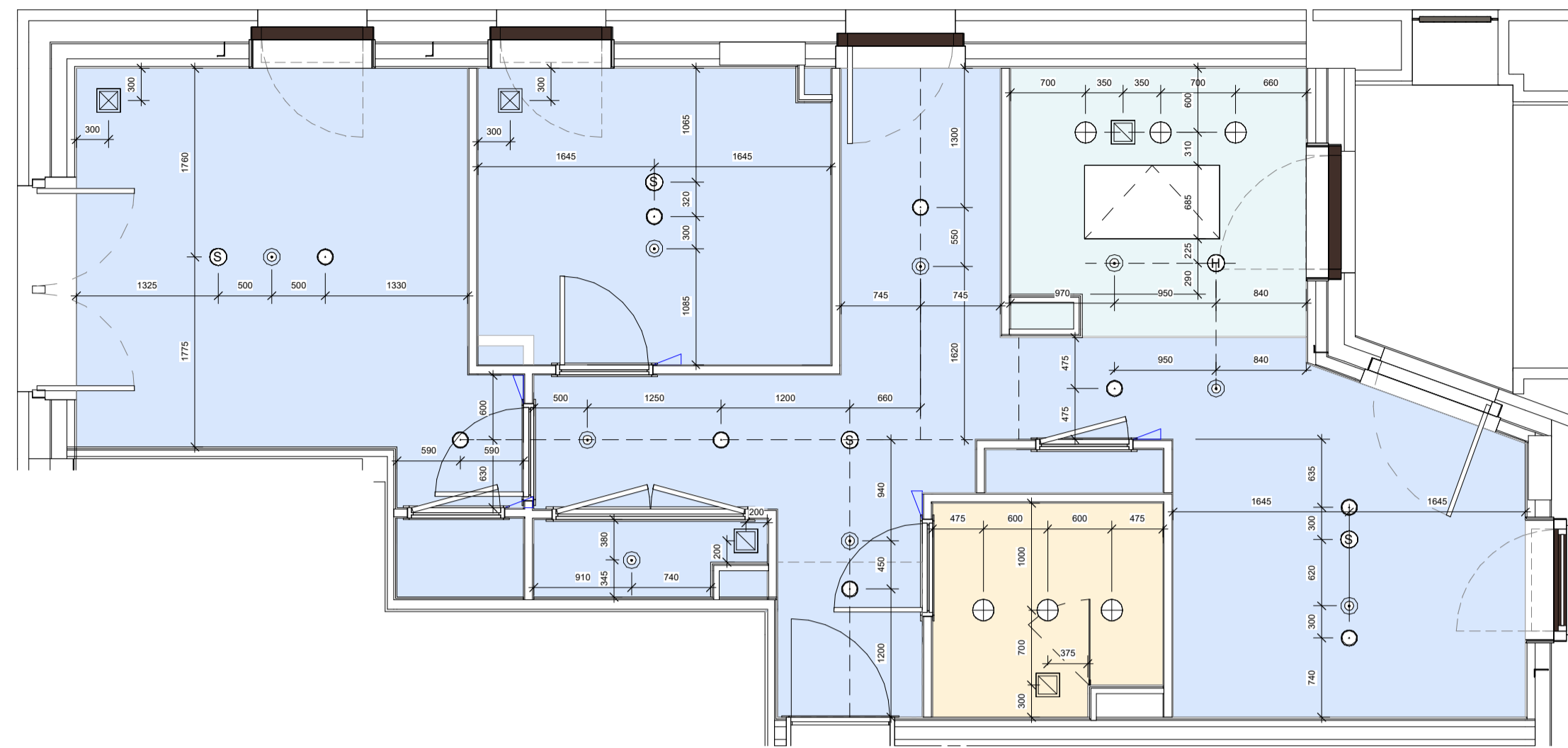


Internal Wall Setting Out

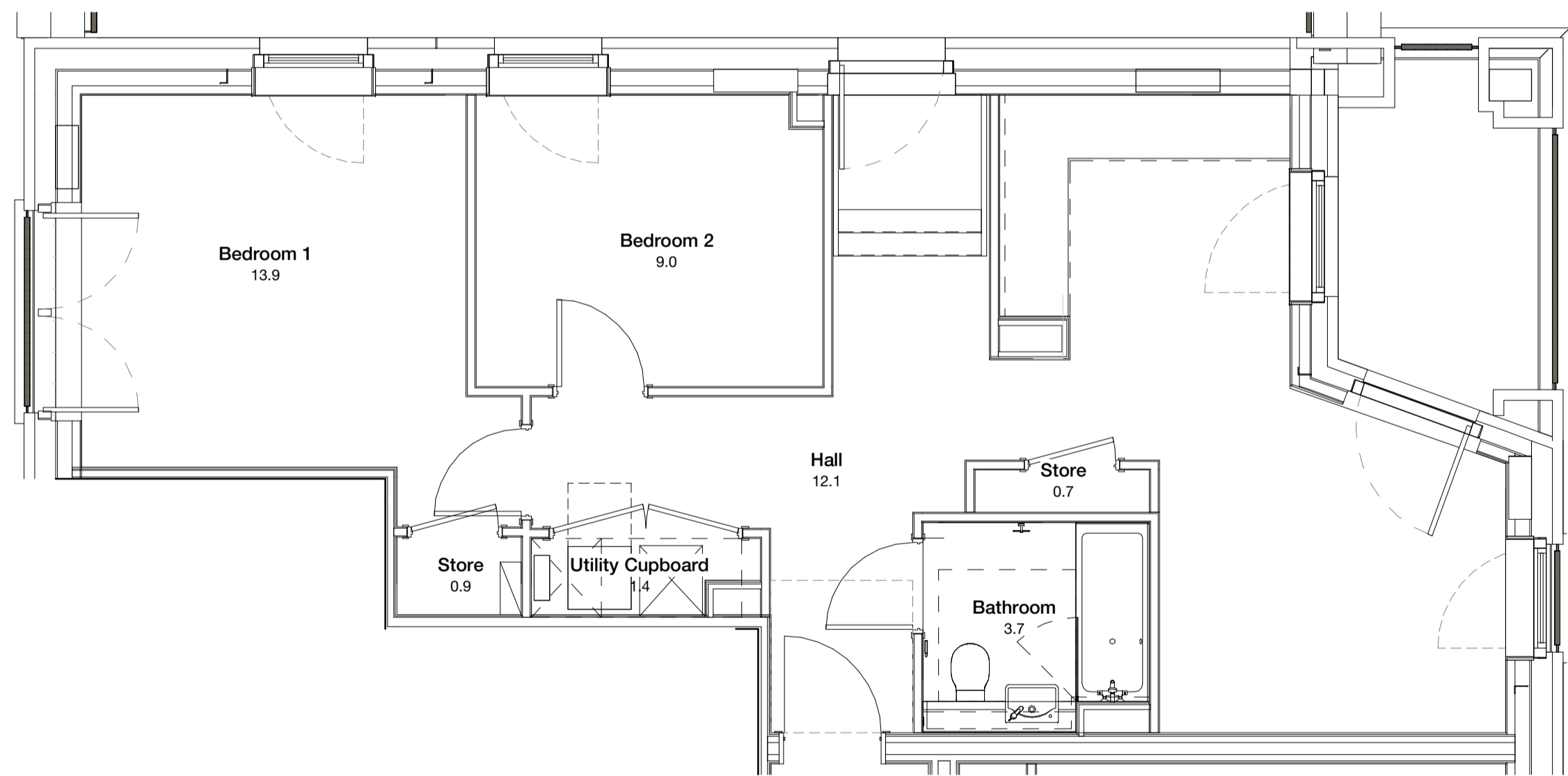
Refer to 20 Series - General Arrangement for building-wide plans

Reflected Ceiling Plan

Specialist subcontractor to verify setting out of sprinkler heads, heat/smoke detectors and fire alarms.

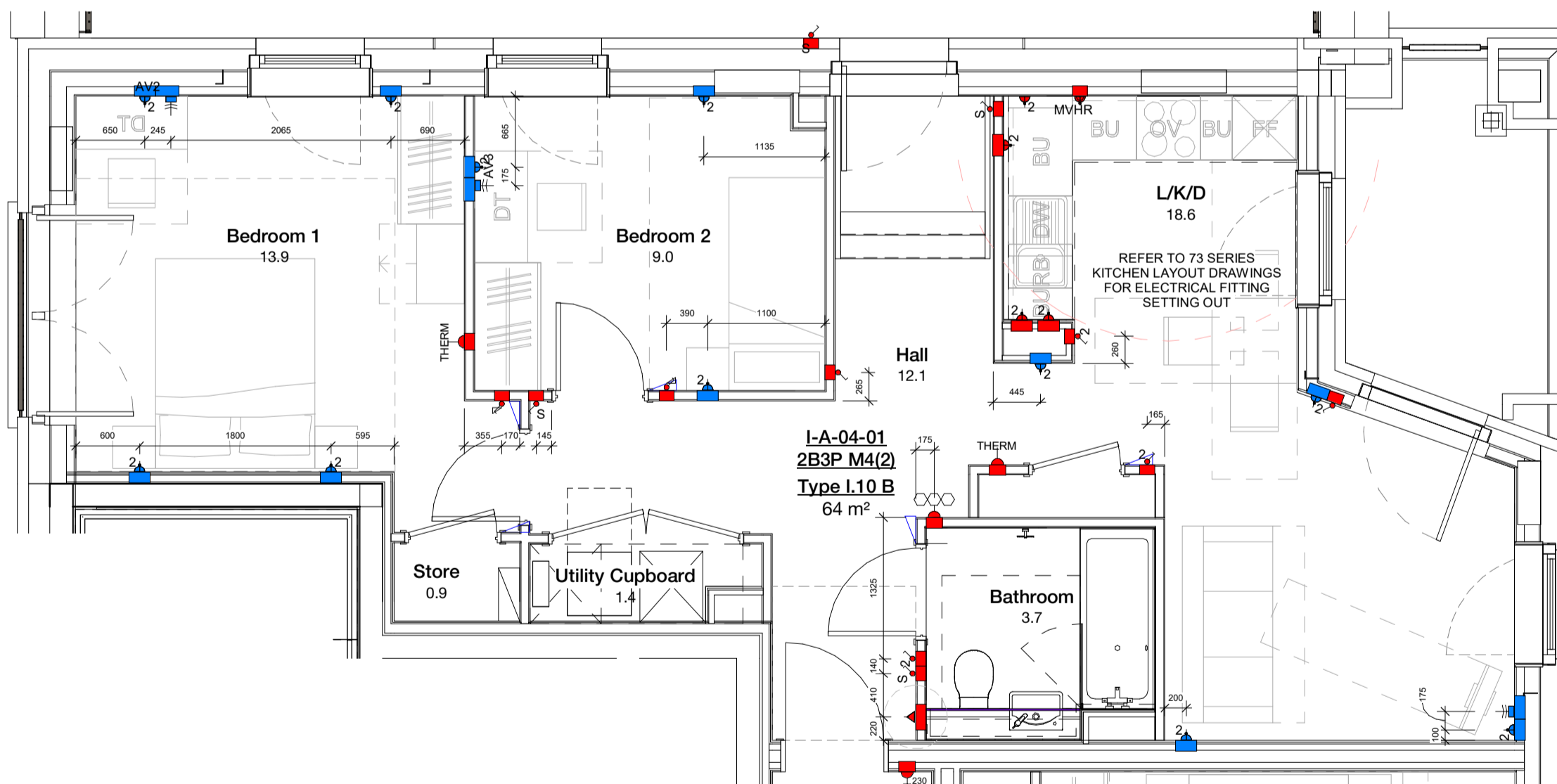


⊕ Downlight	⊕ Heat Detector	Plasterboard - Dwelling See T-Sheet CLG-102	Note Refer to 35 Series for apartment ceiling details. Service voids and penetrations to be confirmed. Switches to lighting work in progress.
⊙ Pendant Light	⊕ Smoke Detector	Plasterboard - Bulkhead See T-Sheet CLG-103	
⊕ Mechanical Extract	⊕ Sprinkler Head	Plasterboard - Bathrooms See T-Sheet CLG-104	Sprinklers required to all units in line with BS standard BS9251:2014. Number and setting out of heads to be reviewed and confirmed by specialist
⊕ Mechanical Supply	⊕ External Wall Light	Aluminium - Stairwells See T-Sheet CLG-105	
~ Recessed Curtain Track	⊕ External Downlight	MVHR Access Panel	



Apartment Finishes Plan

Key - Threshold strip between floor finishes - Nosing strip to stairs - Vinyl Flooring Type 01 - Vinyl Flooring Type 02 - Floor finish to kitchen to extend below base board	Note Paint finish to Living, Dining, Hallway, Bedroom: 1 No Mist and 2 No. Full coats of Dulux trade matt emulsion to drylined plasterboard walls (spack and block, not skim). Paint finish to Kitchen and Bathroom: 1 No Mist and 2 No. Full coats of Dulux trade matt emulsion for wet areas, to drylined plasterboard walls (spack and filled, not skim).
--	---



Coordination Plan

Electrical layouts are based on MEP Design and quantities. Refer to MEP layouts for switches / sockets in utility cupboards & ones within kitchen cupboards

Key 2 Double Switch Single Switch 2 Double Socket Single Socket CU (shown only in units where it sits outside utility cupboard)	Dimmer Switch MVHR Boost Switch Video Entry Rocker Switch	Media Plate - Living Room Media Plate - Master bedroom Media Plate - Secondary bedroom Stud free zone EP Entry phone	Shaver socket THERM Thermostat Energy monitor Door bell Door bell chimes Passive infrared sensor	Services Setting Out Kitchens Lower kitchen, counter top (Refer to Drawing AVG-MXP-ZZ-GR-J-303000, AVG-MXP-ZZ-DR-J-303001, AVG-MXP-ZZ-GR-J-303002) Media Plate - Living Room Media Plate - Master bedroom Media Plate - Secondary bedroom Stud free zone EP Entry phone	Generally MVHR Boost Switch Video Entry Rocker Switch Shaver socket Thermostat Energy monitor Door bell Door bell chimes Passive infrared sensor
---	--	---	--	---	--

Copyright Hawkins\Brown Architects
 No implied licence exists. This drawing should not be used to calculate areas for the purposes of valuation. Do not scale this drawing. All dimensions to be checked on the site by the contractor and such dimensions to be their responsibility. All work must comply with relevant British Standards and Building Regulations requirements. Drawing errors and omissions to be reported to the architect. To be read in conjunction with Architect's specification and other consultant information.

Rev	Description	Date
P1	Issued for Coordination	18/07/22
P2	Utility cupboard door width updated	19/10/22
P3	Issued with updated plans	21/02/23
P4	Drawing name updated	15/03/23

159 St John Street
 London EC1V 4JQ
 mail@hawkinsbrown.com
 hawkinsbrown.com

Hawkins\Brown

Project
 Agar Grove Phase 1c
 Block I

Drawing
 Unit Type 10 B (1/2)

Scale @ A1
 1 : 50

Date
 18/07/22

Drawn By
 LP

Checked By
 JW

Job Number
 1423-C

Status
 S1

Purpose of Issue
 Coordination

Drawing No.
 AGV-HBA-I-04-DR-A-200420

Rev
 P4