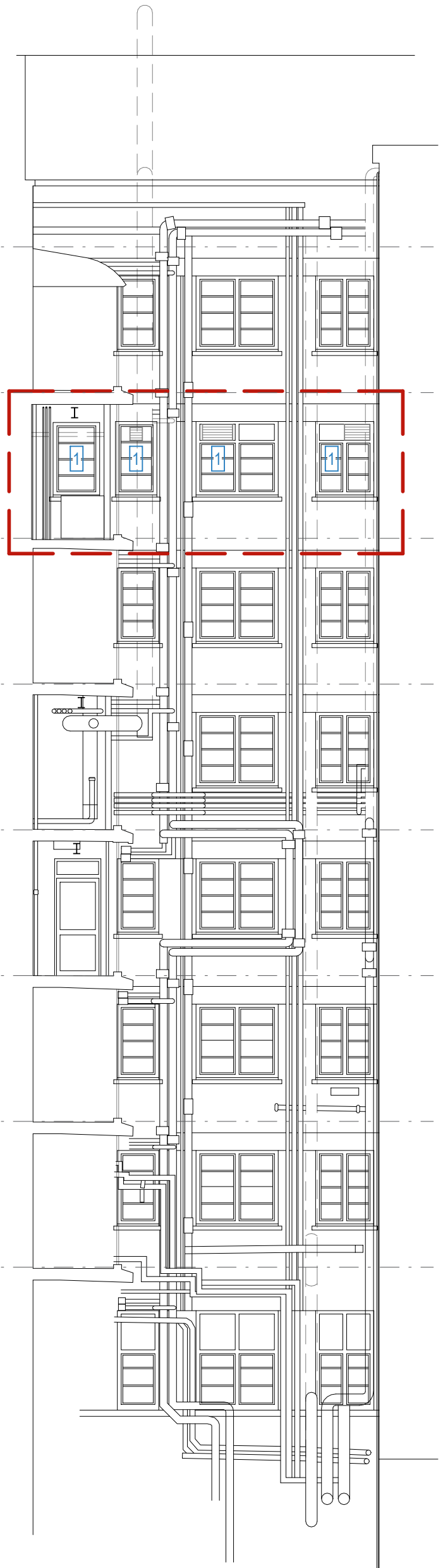


3 South Elevation 6  
3255 1 : 100



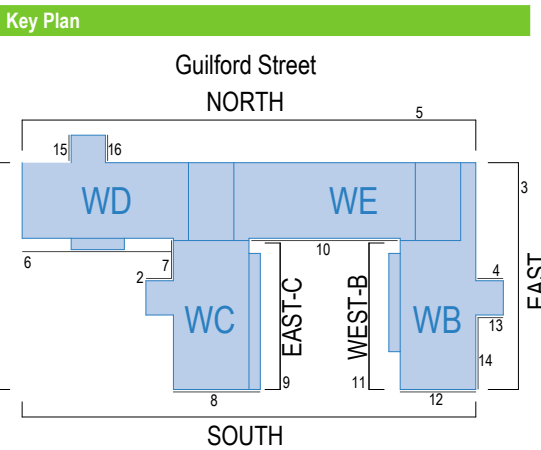
1 West Elevation 1  
3255 1 : 100



2 West Elevation 7  
3255 1 : 100



4 Pod South Elevation 6 - Wing D  
3255 1 : 50



- Key**
- Existing building fabric
  - New PPC Aluminium double glazed window in existing structural opening. RAL to match existing and accommodate services penetrations/louvers as shown.
  - New blank panel. RAL to match existing. Arrangement to accommodate services penetrations/louvers as shown.
  - New pods clad in Vulcan Ceramapanel system:
  - Natural+ Textures Raw 2051 Ripe Mango (matching RAL 1024 - ochre yellow)
  - Natural+ Textures Raw 2001 Limestone (matching RAL 1013 - oyster white)
  - Natural+ Textures Raw 2031 Chalk Board (matching RAL 7021 - black grey)
  - New PPC Aluminium double glazed window in pods. Grey frame, RAL to be confirmed.
  - New PPC Aluminium double glazed window in pods. Grey frame, RAL to be confirmed.
  - New extract / intake louvers. RAL to match panel.
  - Existing balustrade and associated white infill mesh to remain.
  - Condensing unit Dicoil MVHR, DX units and VRF heat recovery units

- Notes**
- New external rainscreen walls (pods). Drained and back-ventilated rainscreen cladding system with light steel wall framing:
    - Ceramapanel Vitrafix Secret Fix System (A1 Natural textures Raw) from Vulcan. 12mm fibre cement panels, 150mm cavity with 8-10mm open joint (black).
    - Merssec SFS Infill Wall with weather defence sheathing board and internal British Gypsum lining (90mm stud and 2x12.5mm Fire Board)
    - Thermal insulation: mineral wool.
    - Cavity fire barrier: sleeved mineral wool.
  - Wall repair system: Any infills or replacements of external masonry to be completed with matching material (including colour of bricks) and indented to conceal the extent of the replacement. Jointing material should also match the existing, especially where/lime mortar was used in the original masonry. Any gaps to be closed with fire rated sealers and sealant, appropriate for the size of the gap and approved by the appointed fire consultant.

Rev	Date	Description/ Drawn/ Sign
A02	30.03.23	Planning issue/ DU/ AZ
A01	24.02.23	Planning issue to Client / ERA / AZ

**sonnemann**toon  
3rd Floor, Camelford House, 87-90 Albert Embankment, London, SE1 7TP, United Kingdom  
+44 (0)20 7580 8881 www.st-arch.co.uk

Drawing not intended to be scaled. If scaling from the drawing is required, be aware of reprographic discrepancies and tolerances, critical dimensions to be checked. Architect to be informed of all discrepancies in dimensions. Contractor to check all dimensions on site. © Drawing protected by copyright

Project Title  
GOSH Clinical Research Facility

Drawing Title  
PROPOSED ELEVATIONS  
Planning - South 6 and West 1&7

Scale Status Revision  
1: 100 @A1 APPROVAL A02  
1: 200 @A3

Drawing number  
2136-ST-XX-XX-DR-A-3255

0 1 5 10m