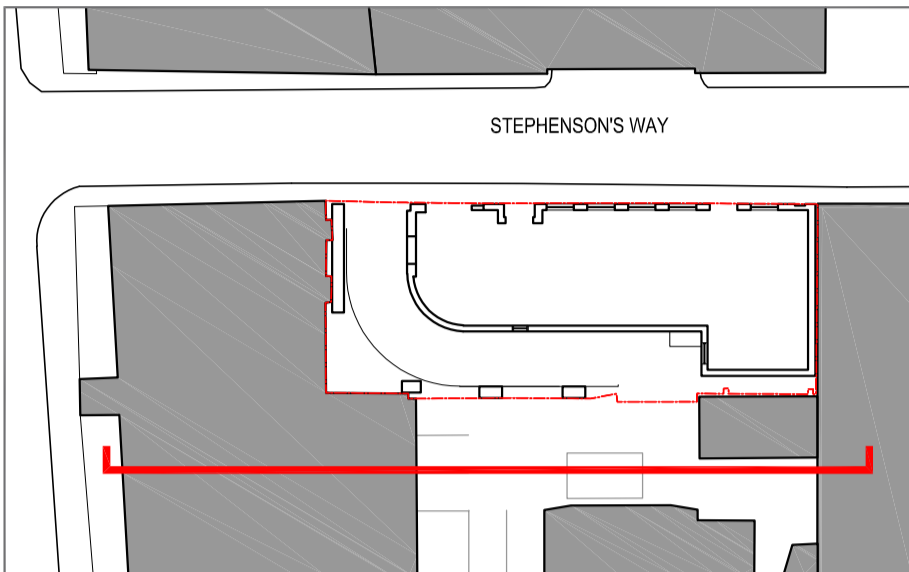


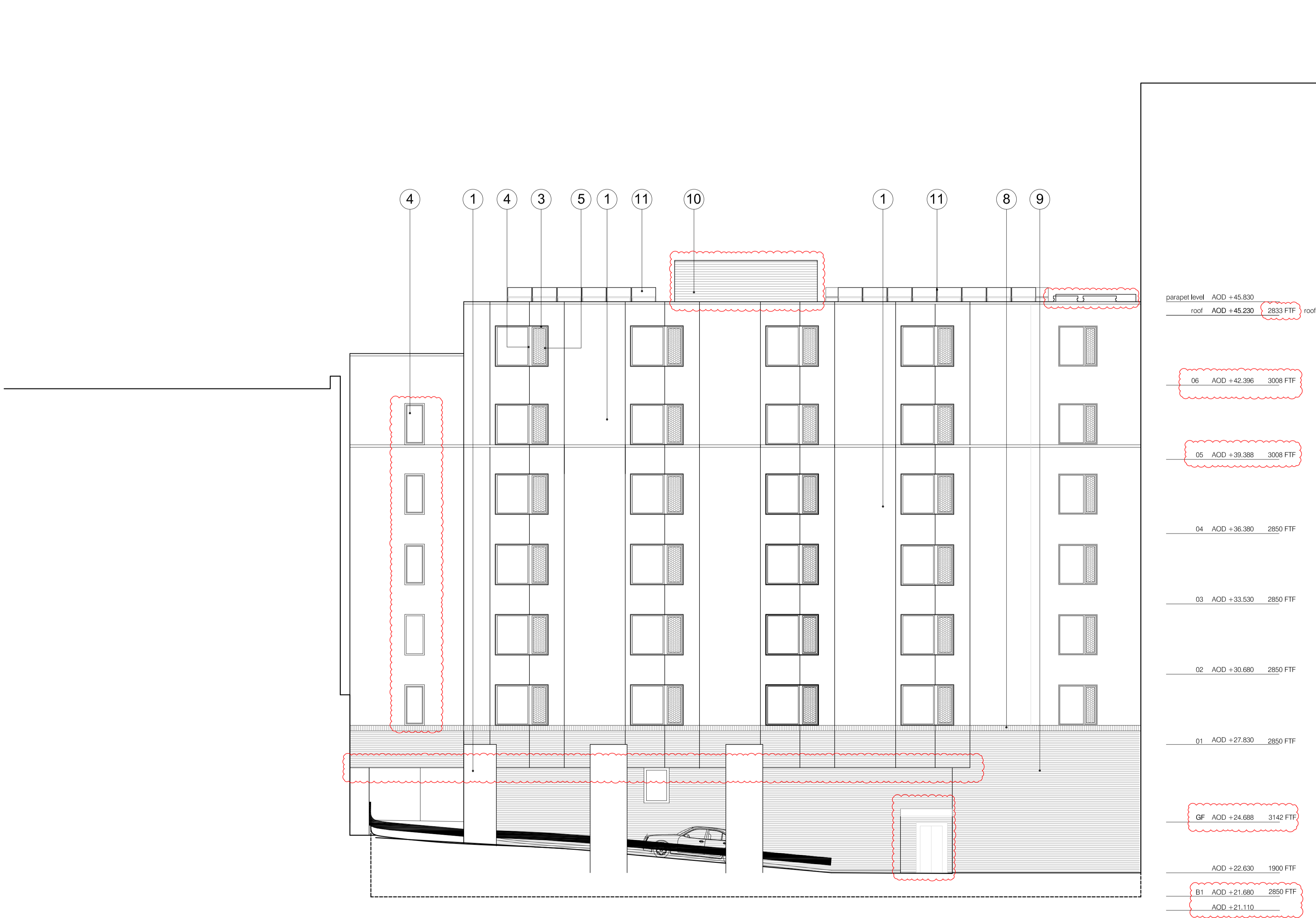
General Notes
The drawing is copyright of Darling Associates. This drawing shall not be scaled. All dimensions are in mm unless otherwise stated. All dimensions shall be checked on site prior to commencing the works and any discrepancies to be reported to Darling Associates. All works shall conform to the current edition of the building regulations and other statutory requirements. All materials and workmanship shall conform with the relevant British Standard specifications and codes of practice. If this drawing forms part of an application for planning permission, it shall not be used for any other purpose without the express permission of Darling Associates. This drawing may incorporate information from other professionals. Darling Associates cannot accept responsibility for the integrity and accuracy of such information. Any clarification and/or additions that are required appertaining to such information should be sought from the relevant profession or their appointment representative.
Drawings, specifications and schedules are to be read in conjunction with the following where applicable: Employer's Requirements documents, Agreements to Lease, Structural Engineer's drawings and specifications, Civil Engineer's drawings and specifications, Survey Drawings, Party Wall Boundary Awards. Other specialist design consultant's requirements as appointed by the Main Contractor. Other specialist design sub-contractor's requirements as appointed by the Main Contractor.



Key Plan



- Notes** KEY
- 1 Coloured cement based render - colour off white or similar approved (side and rear elevations only)
 - 2 Pre-finished metal palisade car park entry gate: finish pearl gold metallic RAL 1036 or similar approved
 - 3 Coloured cement based render to window reveals; colour off white or similar approved
 - 4 PPC metal window surrounds and frames; pure white RAL 9010 or similar approved
 - 5 Laser cut perforated metal vent screens with honeycomb hexagon cu out pattern; in pearl gold metallic RAL 1036 or similar approved
 - 6 Light tone 'London stock' brickwork soldier course with light/ natural grey raked mortar joints
 - 7 Light tone 'London stock' brickwork with light/ natural grey raked mortar joints
 - 8 Dark tone 'London stock' brickwork soldier course with black/ dark grey raked mortar joints
 - 9 Dark tone 'London stock' brickwork with black/ dark grey raked mortar joints
 - 10 Plant screen in pearl gold metallic RAL 1036 or RAL 9010 similar approved
 - 11 Indicative Photo Voltaic layout



P01 Submit for planning application. 23.03.23 SL UE

REV NOTES DATE BY AUTH

DARLING ASSOCIATES ARCHITECTS

1 Greencoat Row London SW1P 1PQ UK
mail@darlingassociates.net
www.darlingassociates.net
+44 20 7630 0500

DRAWING STATUS

Planning

TITLE
Proposed Rear Elevation

PROJECT

Stephenson Way, London

SCALE AT A1:
1:100

SCALE AT A3:
1:200

JOB NO.

21012

DRAWING

(PL)-03202

REV.

P01

© Darling Associates Ltd.