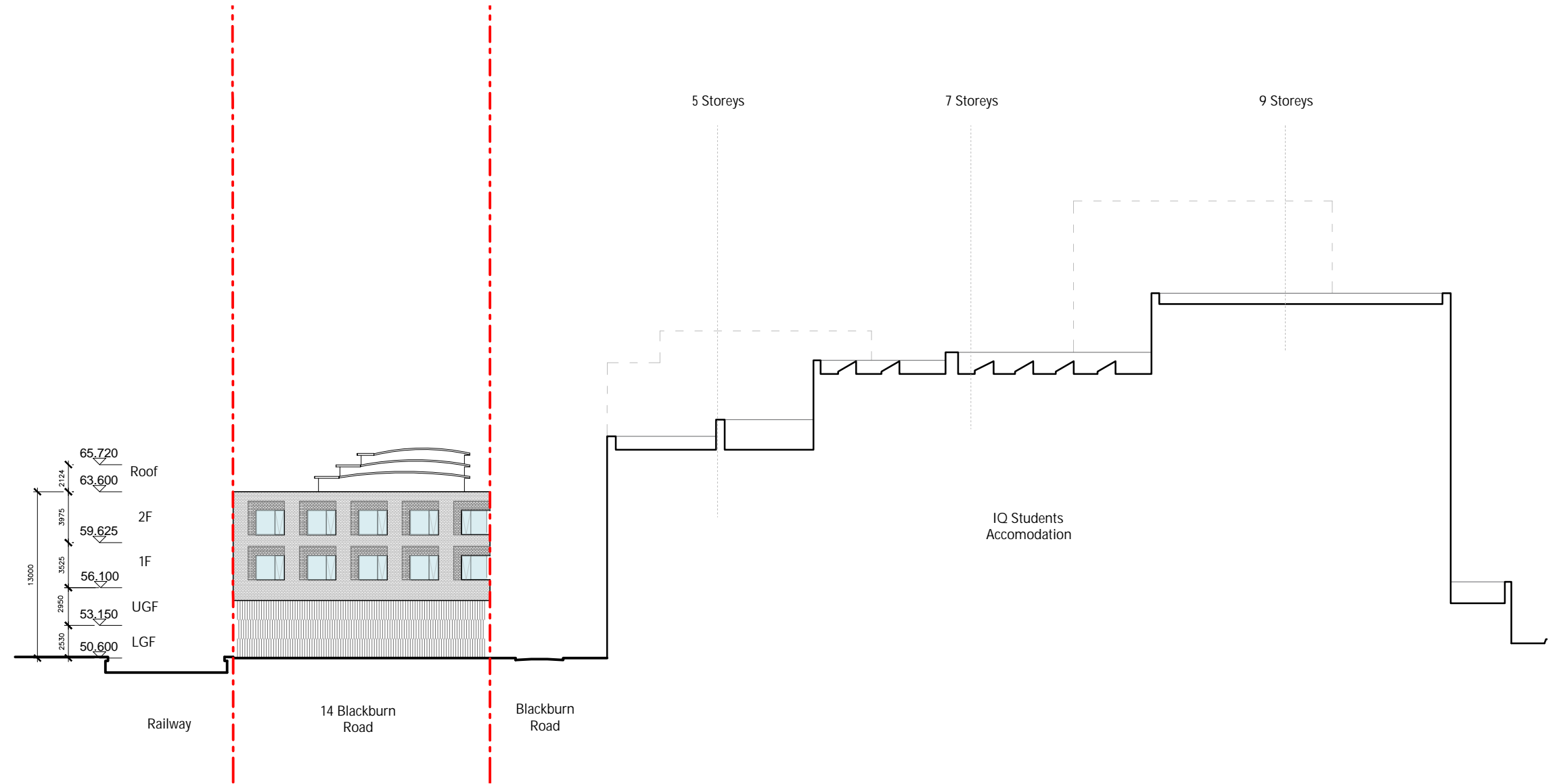
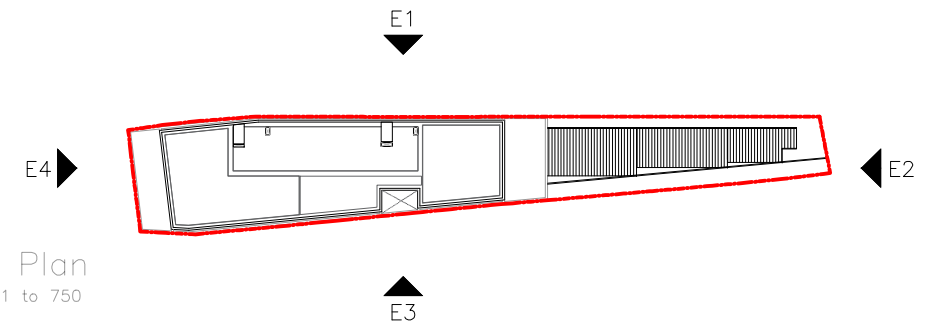


Key Plan
Scale: 1 to 750



GENERAL NOTES:
THIS DRAWING IS COPYRIGHT OF KSR ARCHITECTS. THIS DRAWING MUST BE READ IN CONJUNCTION WITH THE DESIGNER'S RISK ASSESSMENT, SPECIFICATION AND ALL OTHER RELEVANT DOCUMENTATION AND DRAWINGS. KSR ARCHITECTS ACCEPT NO LIABILITY FOR ANY EXPENSE, LOSS OR DAMAGE OF WHATSOEVER NATURE AND HOWEVER ARISING FROM ANY VARIATION MADE TO THIS DRAWING OR IN THE EXECUTION OF THE WORK TO WHICH IT RELATES WHICH HAS NOT BEEN REFERRED TO THEM AND THEIR APPROVAL OBTAINED.
DO NOT SCALE FROM THIS DRAWING OR THE COMPUTER DIGITAL DATA. ONLY FIGURED DIMENSIONS ARE TO BE USED. IF IN DOUBT ASK.

SECTION 73 APPLICATION
Issued for approval

KSR ARCHITECTS & INTERIOR DESIGNERS
KSR Architects LLP
14 Greenland Street
London NW10 0ND
info@ksrarchitects.com
t: +44 (0)20 7862 8000
www.ksrarchitects.com

Project:
• 14 Blackburn Road
London
NW6 1RZ

Title:
• PROPOSED
ELEVATION 4

Rev	Notes	dd.mm.yy	By	Checked	Date: MARCH 2023	Drawn By: MW	Checked: DM	Project Ref: • 21068	Drawing No: • P-304	Revision:
Do not scale from this drawing. Check all dimensions on site.					Scale: 1:200 @ A1, 1:400 @ A3					