

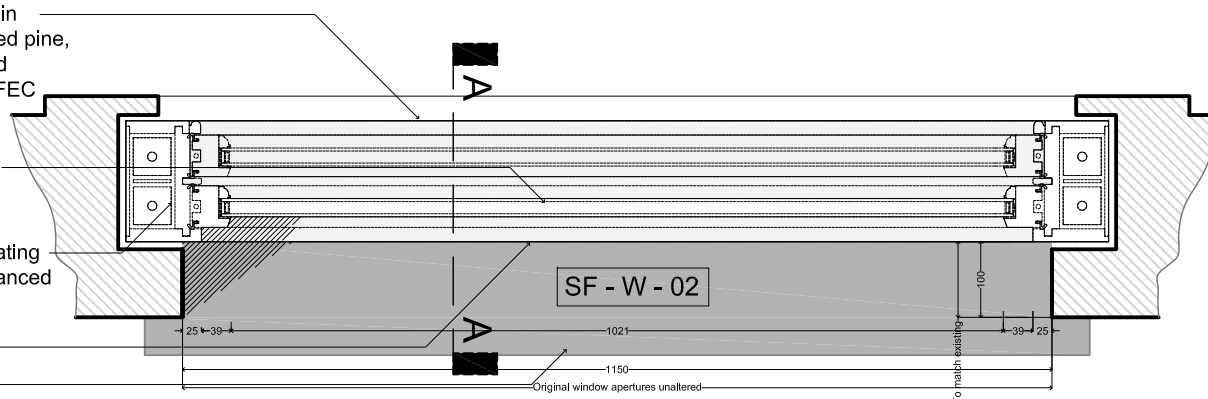
White painted timber frames in selected engineered laminated pine, sourced from sustainable and managed forestry (FSC or PFEC certified)

Factory glazed with 24 mm thickness dual sealed units

Sashes hung on cords, operating over pulleys and counter balanced with lead weights

Hardwood timber cill

Existing/original stone cills



PLAN (SECTION B - B)

Trickle vent to window head

Factory glazed with 24 mm thickness dual sealed units

Weather sealed to BS EN 6375-1 2009

Sashes hung on cords, operating over pulleys and counter balanced with lead weights

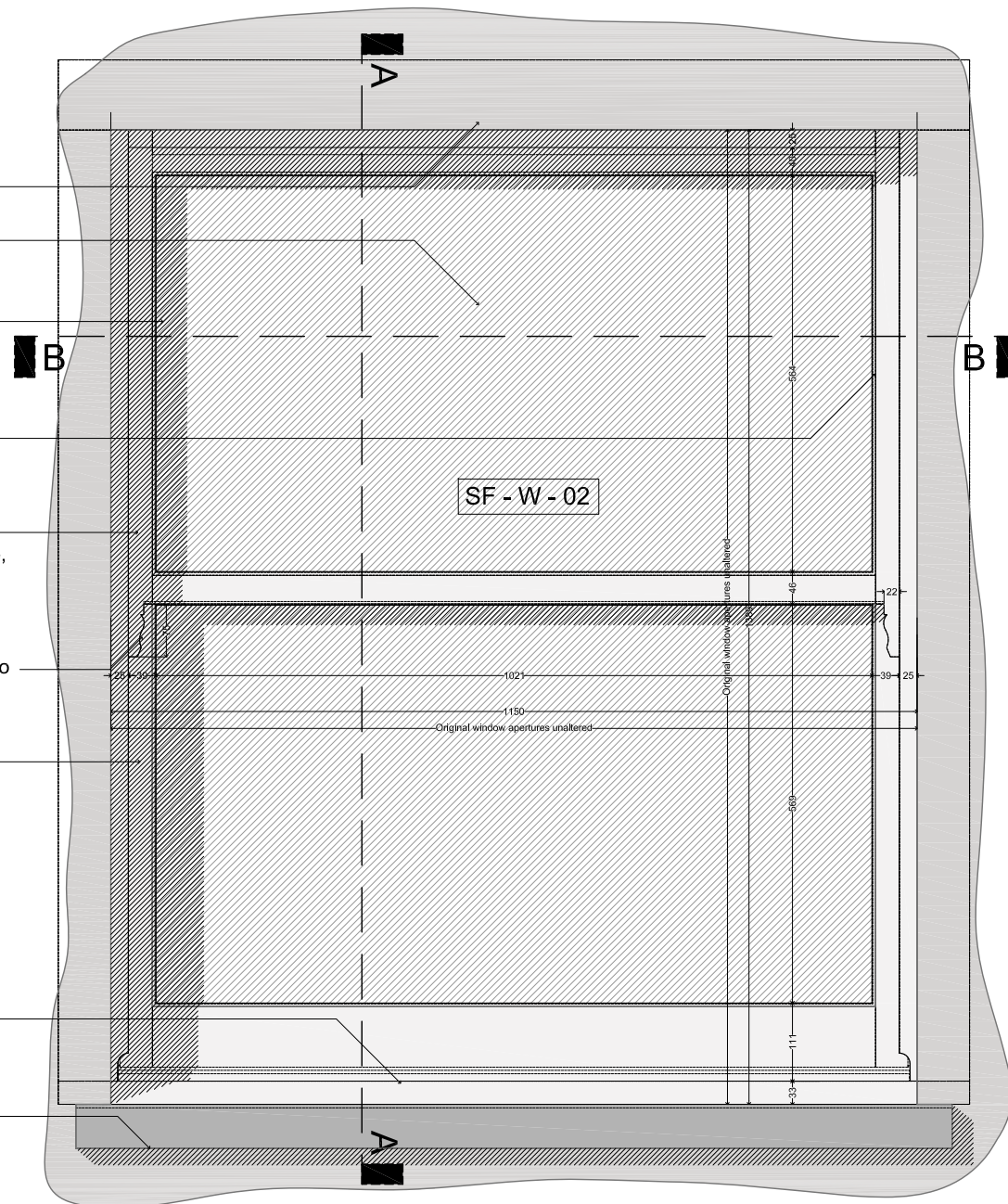
White painted timber frames in selected engineered laminated pine, sourced from sustainable and managed forestry (FSC or PFEC certified)

Solid feature horns to top sashes to match style and appearance of existing

3 coats of sprayed applied microporous water based paint system to frame

Hardwood timber cill

Existing/original stone cills retained throughout

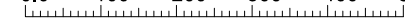


ELEVATION

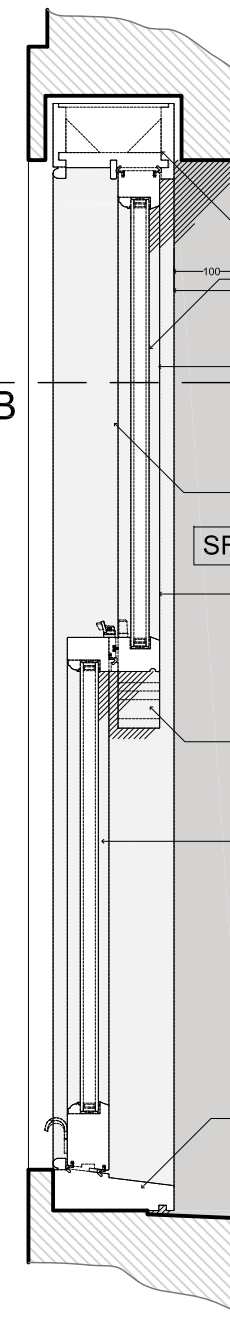
INDICATIVE SASH WINDOW DETAILS

SCALE 1:10

0,0 100 200 300 400 500mm



SECTION A - A



Trickle vent to window head

Factory glazed with 24 mm thickness dual sealed units

Weather sealed to BS EN 6375-1 2009

Sashes hung on cords, operating over pulleys and counter balanced with lead weights

White painted timber frames in selected engineered laminated pine, sourced from sustainable and managed forestry (FSC or PFEC certified)

Solid feature horns to top sashes to match style and appearance of existing

3 coats of sprayed applied microporous water based paint system to frame

Hardwood timber cill

Existing/original stone cills retained throughout

Date: 15.03.2023 Scale: 1/10@A3 Revislon: -

THIS DRAWING IS PREPARED SOLELY FOR DESIGN AND PLANNING SUBMISSION PURPOSES. IT IS NOT INTENDED OR SUITABLE FOR EITHER BUILDING REGULATIONS OR CONSTRUCTION PURPOSES AND SHOULD NOT BE USED FOR SUCH



Flat 3, No.3 Belsize Park, London NW3 4ET

039\_150